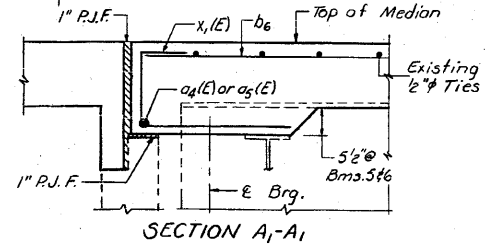
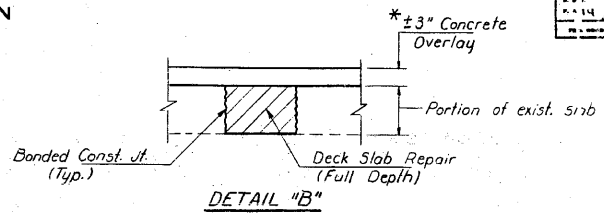
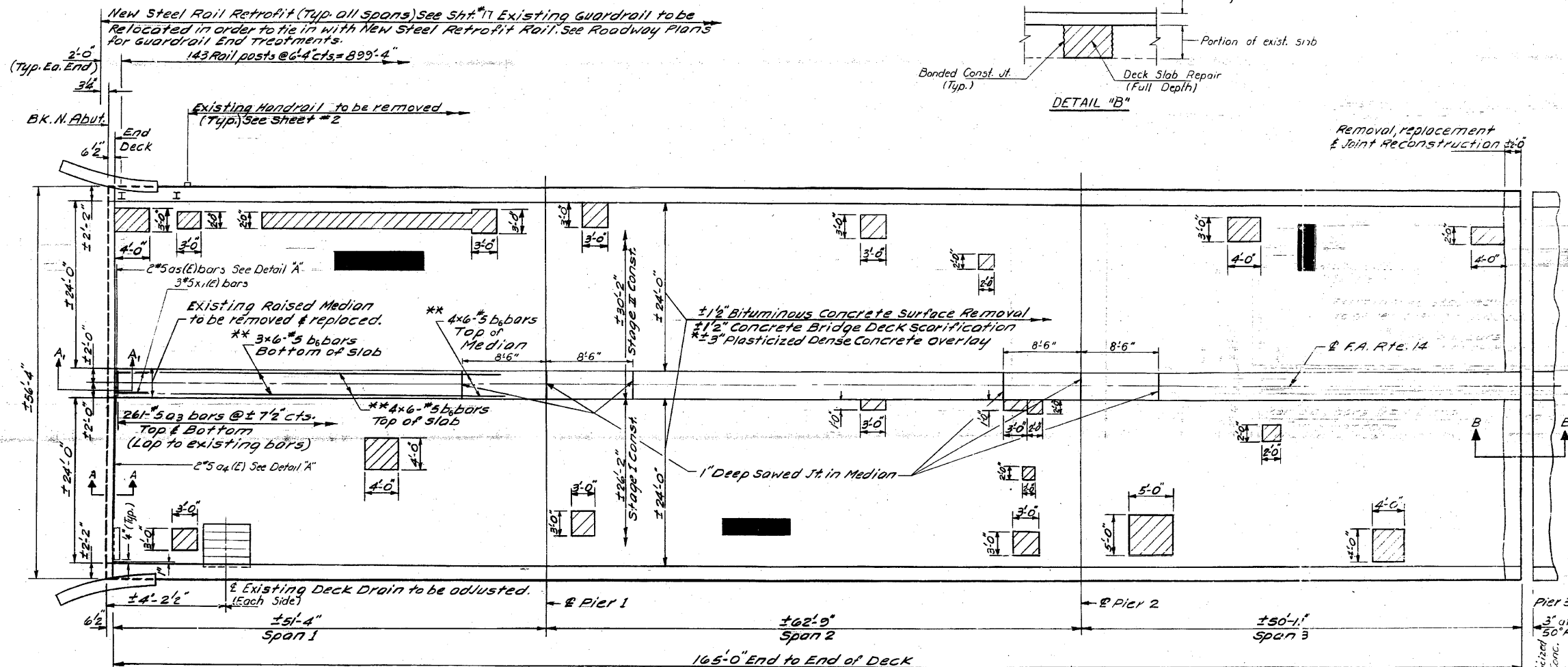


STATE OF ILLINOIS
DEPARTMENT OF TRANSPORTATION

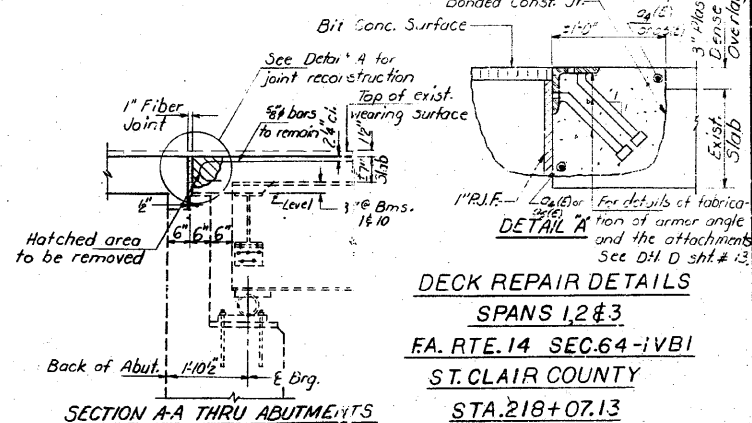
NO.	SECTION	COUNTY	TOTAL SHEETS	SHEET NO.
312	64-IVBR	ST. CLAIR	259	142

SHEET NO. 9
18 SHEETS



Shaded areas represent Deck Slab Repair - Partial Depth Actual areas and locations to be determined in the field by the Engineer.
Hatched areas indicate Full Depth Deck Repairs. Areas and locations are approximate, actual areas and locations to be verified in the field by the Engineer.
* Plasticized Dense Concrete Overlay shall not be applied until Deck Slab Repairs are completed and the end joints are reconstructed. See Detail B.

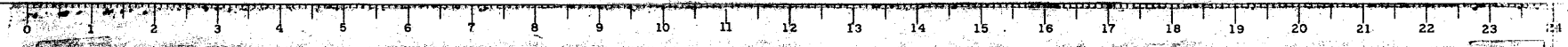
For Cross section see sheet #2.
For Sections B-B, C-C, & Bill of Material see sheet #11.
Bars indicated thus 3x20-#5 etc. indicates 3 lines of bars with 20 lengths per line.
Min lap for #5 bars shall be 1'-8" unless otherwise noted.
** For Placement Details, see Median Replacement Details sheet #14.
For Joint Removal Details, see sheet #10.
For Joint Reconstruction Details, see sheet #11.
For Deck Drain Adjustment Details, see sheet #10.
Approximately 675 Sq. Ft. of Bridge sidewalk Repair (Partial Depth) is included. Actual areas and locations to be determined in the field by the Engineer.



DESIGNED *James R. Roberts*
CHECKED *David H. Hufnagel*
DRAWN *L.H.*
CHECKED *D.G.*

EXAMINED *James R. Roberts*
APPROVED

ENGINEER OF BRIDGES AND STRUCTURES
DIRECTOR OF HIGHWAYS



FOR INFORMATION ONLY

FILE NAME =	USER NAME = CFC..	DESIGNED -	REVISED -
...142-0876882-exist-bridge-repair-plans	2.dgn	DRAWN -	REVISED -
	PLOT SCALE = 48.000000 / IN.	CHECKED -	REVISED -
	PLOT DATE = 8/5/2010	DATE - / /	REVISED -

STATE OF ILLINOIS
DEPARTMENT OF TRANSPORTATION

SN 082-0030 PLANS
(REHABILITATION PLANS)

SCALE: SHEET NO. OF SHEETS STA. TO STA.

CB Coombe-Bloxdorf P.C.
- CIVIL ENGINEERS -
- STRUCTURAL ENGINEERS -
- LAND SURVEYORS -
Design Firm License No. 184-002703

F.A.P. RTE.	SECTION	COUNTY	TOTAL SHEETS	SHEET NO.
312	64-IVBR	ST. CLAIR	259	142

CONTRACT NO. 76882
ILLINOIS FED. AID PROJECT