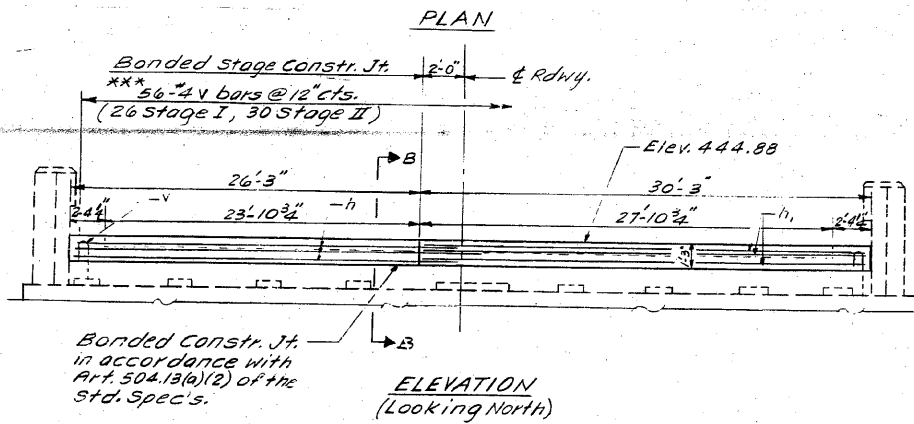
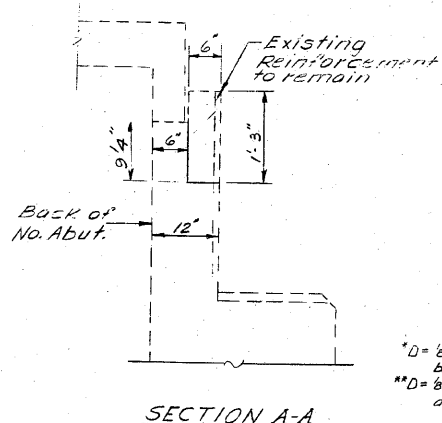
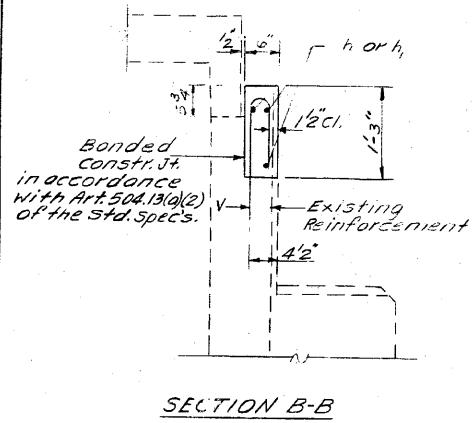
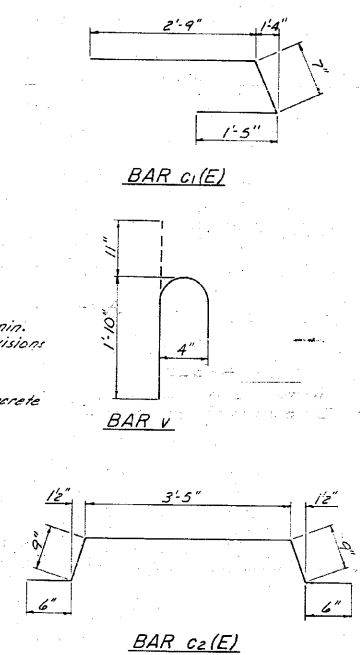
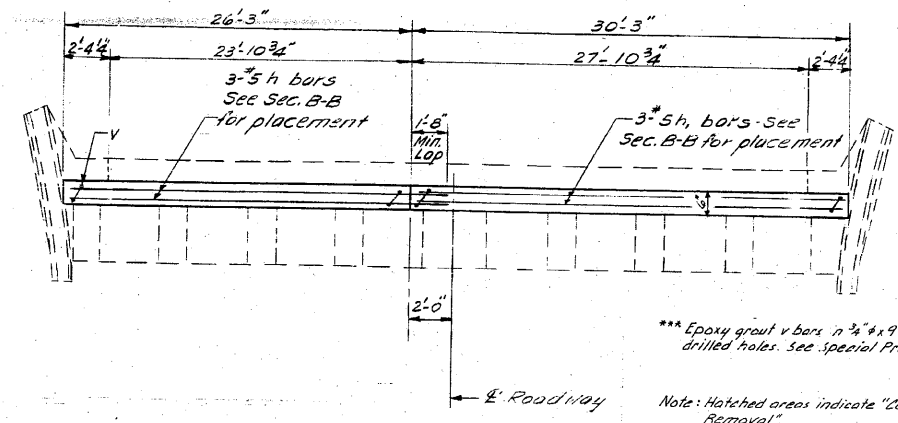
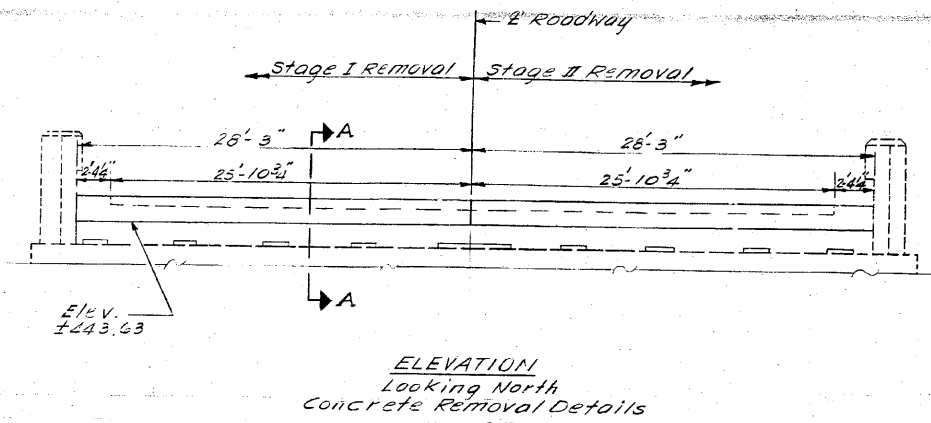


STATE OF ILLINOIS  
DEPARTMENT OF TRANSPORTATION

PROJECT NO.	SECTION	QUANTITY	UNIT	PRICE	SHEET NO. 96
64-1VBR	St. Clair	23	136		18 SHEETS

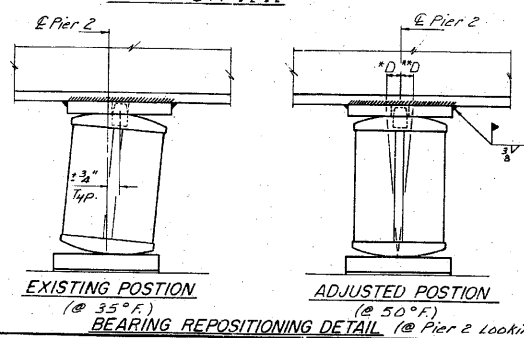


**BILL OF MATERIAL**

Bar No.	Size	Length	Shape
B6(E)	#5	25'-0"	
B7(E)	#5	30'-0"	
C1(E)	#5	4'-0"	
C2(E)	#5	5'-11"	
h	#5	27'-9"	
h1	#5	30'-0"	
v	#4	2'-9"	
Concrete Removal	Cu/Yds	1.3	
Reinf. Bars (Sub)	Lbs.	280	
Reinf. Bars (Super) (Epoxy Coated)	Lbs.	13510	
Class X Concrete Cu/Yds		1.3	

**REPOSITIONING EXISTING BEARINGS**  
(10 Req'd.)

- The Contractor shall submit for approval by the Engineer, plans for jacking prior to commencing any work at the bearings. The dead load reaction per bearing at Pier #2 is 83 kips. The minimum jack capacity for each bearing shall be 60 Tons.
- Only one bearing at a time shall be repositioned.
- Jacking shall be limited to a maximum of 1/8" lift.
- The welds on the existing top plate shall be removed by Arc Gouging and/or grinding. Care shall be taken to avoid damage to the bottom flange of the beam and the top plate. Any unavoidable gouges in the flange shall be ground smooth.
- Adjust the rocker and top plate as shown.
- Lower jacks to allow contact between the bottom flange and the top plate.
- Field weld the top plate as detailed.
- Lower jacks to fully load the bearing.
- All work at bearings shall be included in "Jack and Reposition Bearings".



**SUBSTRUCTURE REPAIR DETAILS**  
F.A.R.TE.14 SEC.64-1V81  
ST. CLAIR COUNTY  
STA.281+07.13

DESIGNED *David J. Hoff*  
CHECKED *Ralph A. Adams*  
DRAWN *L.H.*  
CHECKED *R.E.A.*

EXAMINED *Oray J. Kaspar*  
PASSED *James J. Roulier*  
APPROVED

APRIL 4 1986  
DIRECTOR OF HIGHWAYS



FOR INFORMATION ONLY

**CB Coombe-Bloxdorf P.C.**  
- CIVIL ENGINEERS -  
- STRUCTURAL ENGINEERS -  
- LAND SURVEYORS -  
Design Firm License No. 184-002703

F.A.P. RTE.	SECTION	COUNTY	TOTAL SHEETS	SHEET NO.
312	64-1VBR	ST. CLAIR	259	144

CONTRACT NO. 76882  
ILLINOIS FED. AID PROJECT

FILE NAME =	USER NAME = CFC...	DESIGNED -	REVISED -	STATE OF ILLINOIS DEPARTMENT OF TRANSPORTATION	SN 082-0030 PLANS (REHABILITATION PLANS)	SCALE:	SHEET NO. OF SHEETS STA. TO STA.	TOTAL SHEETS NO.
...N44-D876882-exist-bridge-repair-plans-4.dgn	DRAWN -	REVISED -						
PLOT SCALE = 40,000,000 / IN.	CHECKED -	REVISED -						
PLOT DATE = 6/5/2010	DATE - / /	REVISED -						