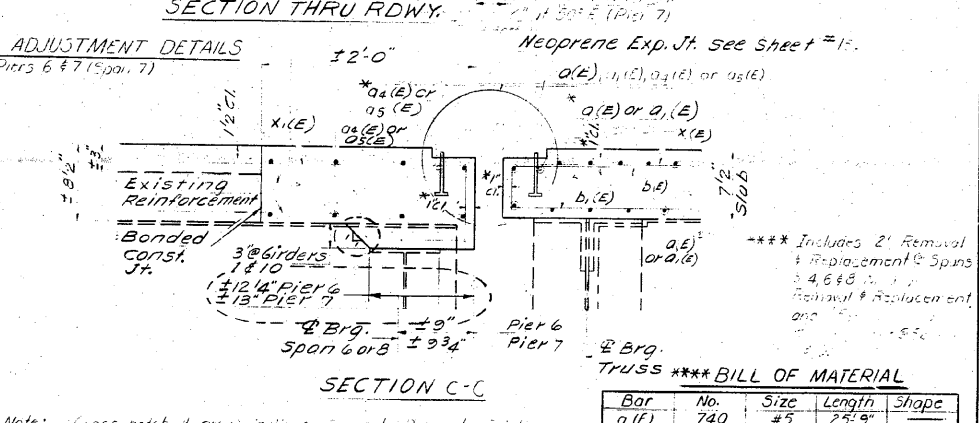
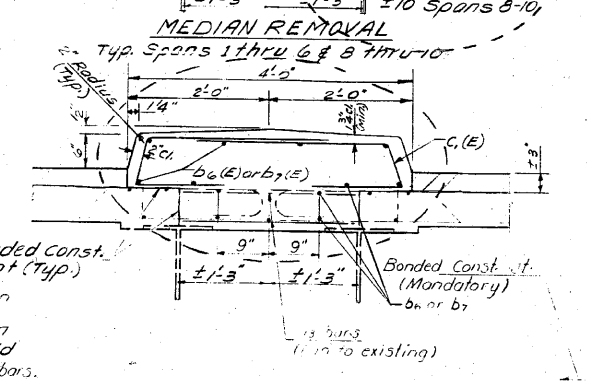
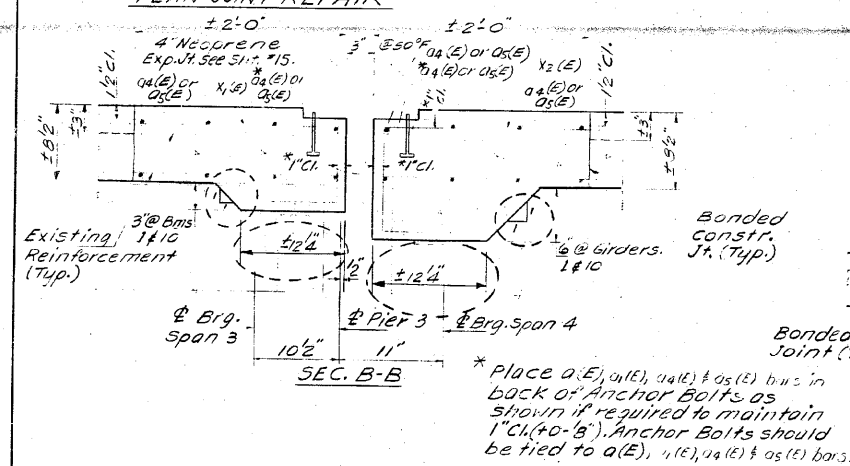
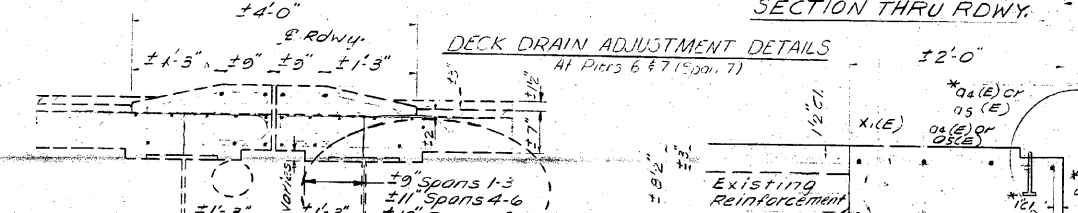
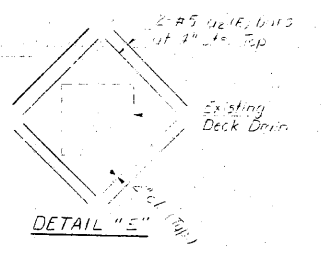
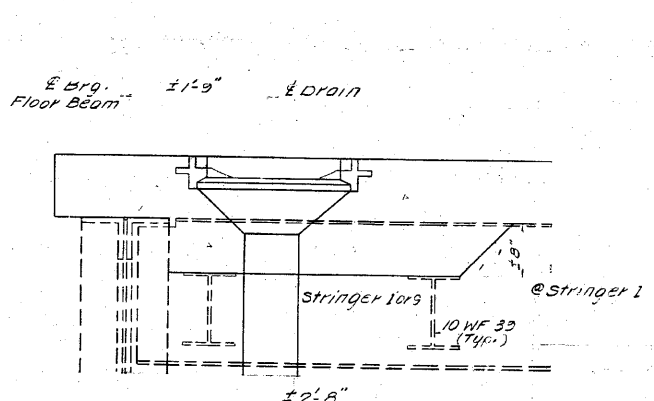
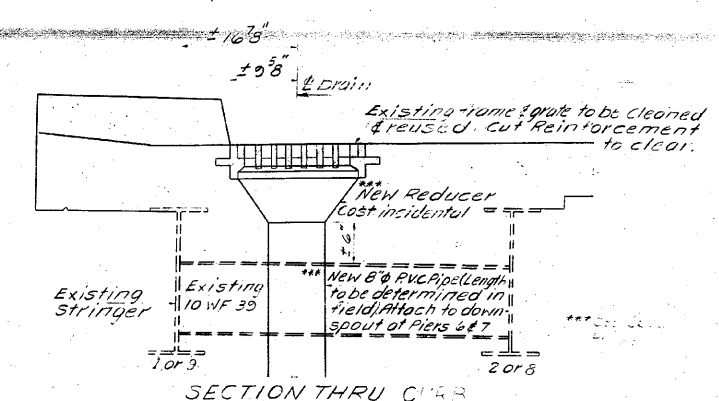
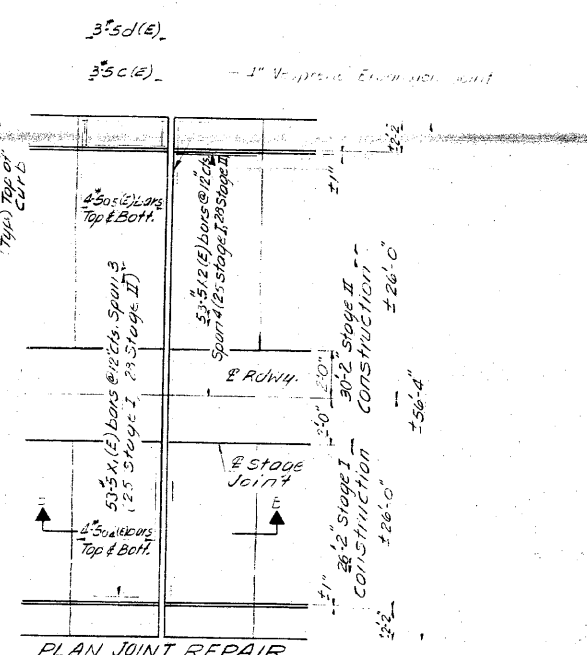


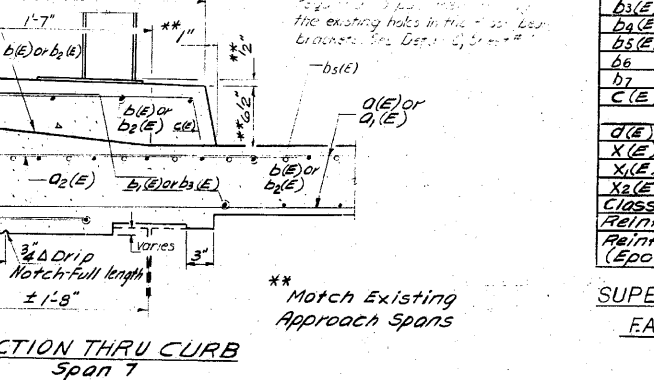
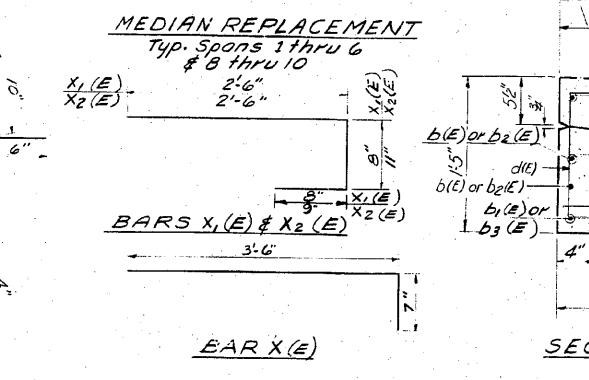
STATE OF ILLINOIS
DEPARTMENT OF TRANSPORTATION

DATE	REVISION	BY	NO.	SHEET NO.
1/24/85	1	LDH	1	154



*** BILL OF MATERIAL

Bar	No.	Size	Length	Shape
a1(E)	740	#5	23'9"	
a1(E)	740	#5	32'8"	
a2(E)	32	#5	2'0"	
a3	218	#6	2'3"	
a4(E)	33	#5	27'9"	
a5(E)	33	#5	30'0"	
b1(E)	402	#5	30'0"	
b1(E)	416	#5	23'0"	
b2(E)	134	#5	30'3"	
b3(E)	156	#5	20'9"	
b4(E)	32	#5	1'9"	
b5(E)	280	#6	14'0"	
b6	(70)	#5	29'0"	
b7	(30)	#5	30'0"	
C(E)	492	#5	2'3"	
d(E)	492	#5	4'7"	
X(E)	106	#5	4'1"	
X1(E)	165	#5	3'10"	
X2(E)	53	#5	4'2"	
Class X Concrete				Cu. Yds. 451.9
Reinforcement Bars				Lbs. 10840
Reinforcement Bars (Epoxy Coated)				Lbs. 88,280



DESIGNED: [Signature] 1/24/85
 CHECKED: [Signature]
 DRAWN: LH
 CHECKED: DG

EXAMINED: [Signature]
 APPROVED: [Signature]
 DIRECTOR OF HIGHWAYS

SUPERSTRUCTURE DETAILS
 F.A. RTE. 14 SEC. 64-1VBI
 ST. CLAIR COUNTY
 STA 281+07.13

