

STATE OF ILLINOIS
DEPARTMENT OF TRANSPORTATION

ROUTE NO.	SECTION	COUNTY	DATE	SHEET NO.
FA 14	64-IVBR	ST. CLAIR	25	150
18 SHEETS				

Joint Size	Y ₁	Y ₂	Y ₃
2"	2"	2"	2" Min.
2 1/2"	2 1/2"	2 1/2"	2 1/2" Min.
4"	3"	3"	2 1/2" Min.

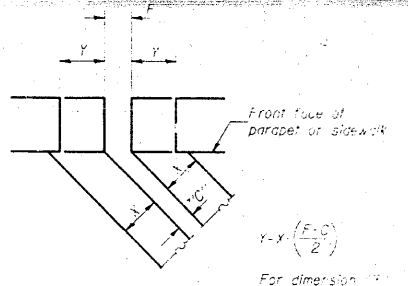
INSTALLATION NOTES

1. Install sponge material into joint to form flap convolution.
2. Install parapet or sidewalk form to fit before casting concrete.
3. Install continuous seal in roadway.
4. Install anchor bolts as shown.

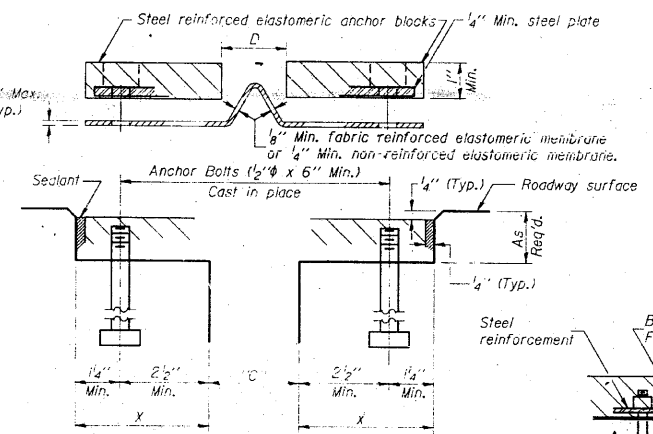
NOTE A: Maximum spacing of anchor bolts shall be 3 centers.

SKREW LIMITATIONS

The details of the anchor blocks and the elastomeric membrane in the parapet, as shown, are for up to 50° skew. For skews greater than 50°, the anchor blocks and the elastomeric membrane, installed in accordance with dimension "D", might require modification to insure a minimum clearance of 1/2" from centerline of anchor studs to edge of parapet opening. The anchor blocks and the elastomeric membrane shall also be installed to the top of the parapet with the anchor studs spaced at 12" cts.



FORMING BLOCKOUT SKETCH



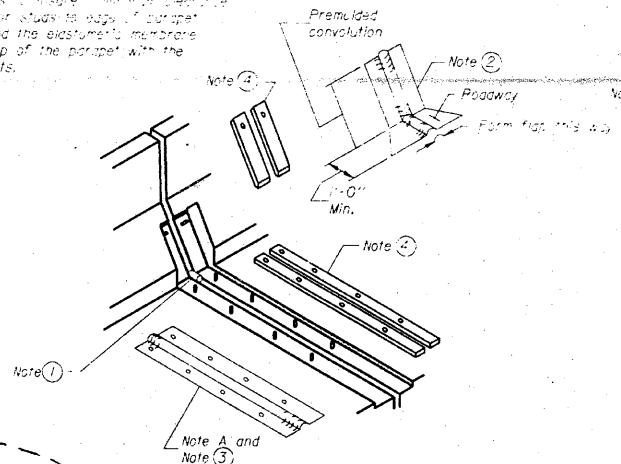
CROSS SECTION

ANCHOR BLOCK REINFORCEMENT WITH ASPHALT SURFACE

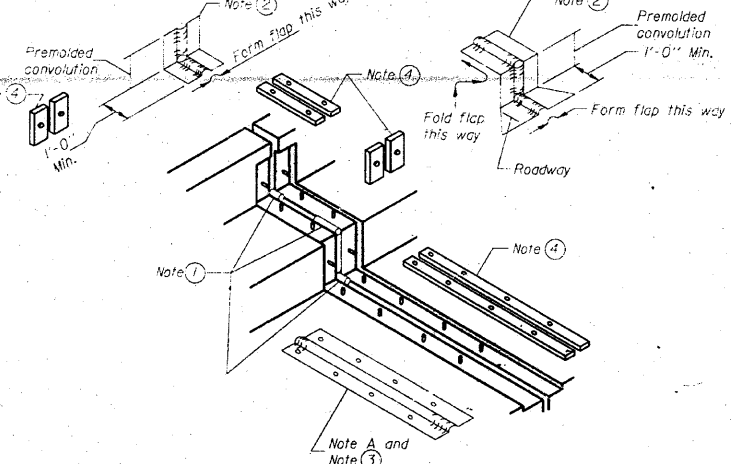
GENERAL NOTES

Continuous Seal Neoprene Expansion Joint shall consist of molded anchor blocks of elastomer and steel, field assembled over continuous lengths of elastomeric membrane. See Special Provisions. The elastomeric membrane shall be pre-molded with a single or a double upward convolution that will have a "memory" to return to its molded position upon joint closure. The steel reinforcement must extend up the back face of anchor blocks when asphalt surfaces are used but is optional in concrete blockout. The convolution length shall be such that the extended length will not be greater than the manufactured length when the joint is fully expanded in its design range and will not protrude above the anchor blocks when the joint is fully compressed. Joint openings shall be adjusted in accordance with Article 503.07(c) of the Standard Specifications when the deck is poured at an ambient temperature other than 50° F. The parapet and curbs/flaps may be furnished factory vulcanized to the roadway membrane provided the centerline of the convolution is maintained and the process and method meet the approval of the Engineer.

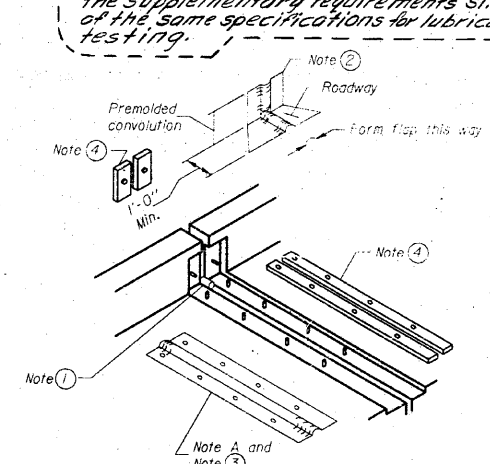
Anchor bolts, washers and nuts, to be plated against corrosion in accordance with the special provisions, shall be zinc-coated by the mechanical plating method conforming to ASTM B 695, Class 50. Zinc-coated nuts shall be tapered oversize in accordance with the requirements of AASHTO M 291 and shall meet the supplementary requirements S1.1 thru S1.6 of the same specifications for lubricant and testing.



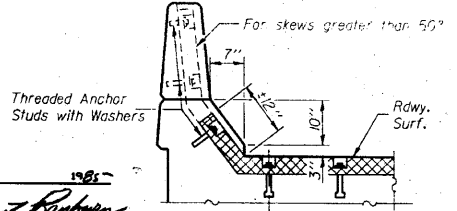
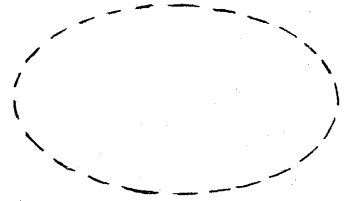
AT PARAPET



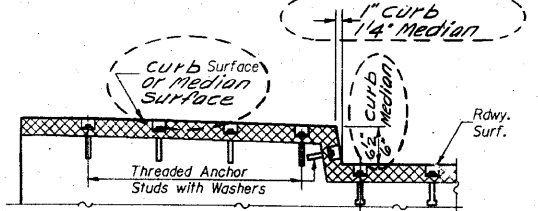
AT CURB OR MEDIAN



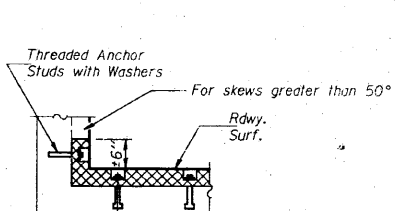
AT WALL



AT PARAPET



AT CURB OR MEDIAN

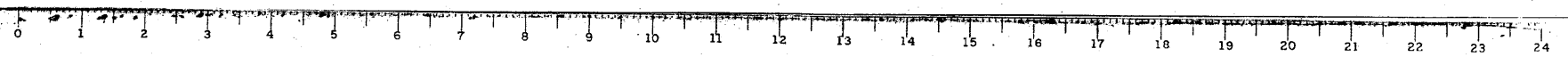


AT WALL

CONTINUOUS SEAL TYPE NEOPRENE EXPANSION JOINTS
For 2", 2 1/2" and 4" Movement
FA. RTE. 14 SEC. 64-IVB1
ST. CLAIR COUNTY
STA. 218+07.13

DESIGNED: *James J. Redman*
CHECKED: *James J. Redman*
DRAWN: *LH*
CHECKED: *DG*
EJ-CS 12-1-83

EXAMINED: *James J. Redman*
APPROVED: *James J. Redman*
DIRECTOR OF HIGHWAYS



AS REVISED 3-28-86 R.E.A.

FOR INFORMATION ONLY

FILE NAME =	USER NAME = CFC...	DESIGNED -	REVISED -
...N56-D876882-exist-bridge-repair-plans-26.dgn		DRAWN -	REVISED -
PLOT SCALE = 40,000000 / IN.		CHECKED -	REVISED -
PLOT DATE = 8/5/2010		DATE - / /	REVISED -

STATE OF ILLINOIS
DEPARTMENT OF TRANSPORTATION

SN 082-0030 PLANS
(REHABILITATION PLANS)

SCALE: SHEET NO. OF SHEETS STA. TO STA.

CB Coombe-Bloxdorf P.C.
- CIVIL ENGINEERS -
- STRUCTURAL ENGINEERS -
- LAND SURVEYORS -
Design Firm License No. 184-002703

F.A.P. RTE.	SECTION	COUNTY	TOTAL SHEETS	SHEET NO.
312	64-IVBR	ST. CLAIR	259	156
				CONTRACT NO. 76882
ILLINOIS FED. AID PROJECT				