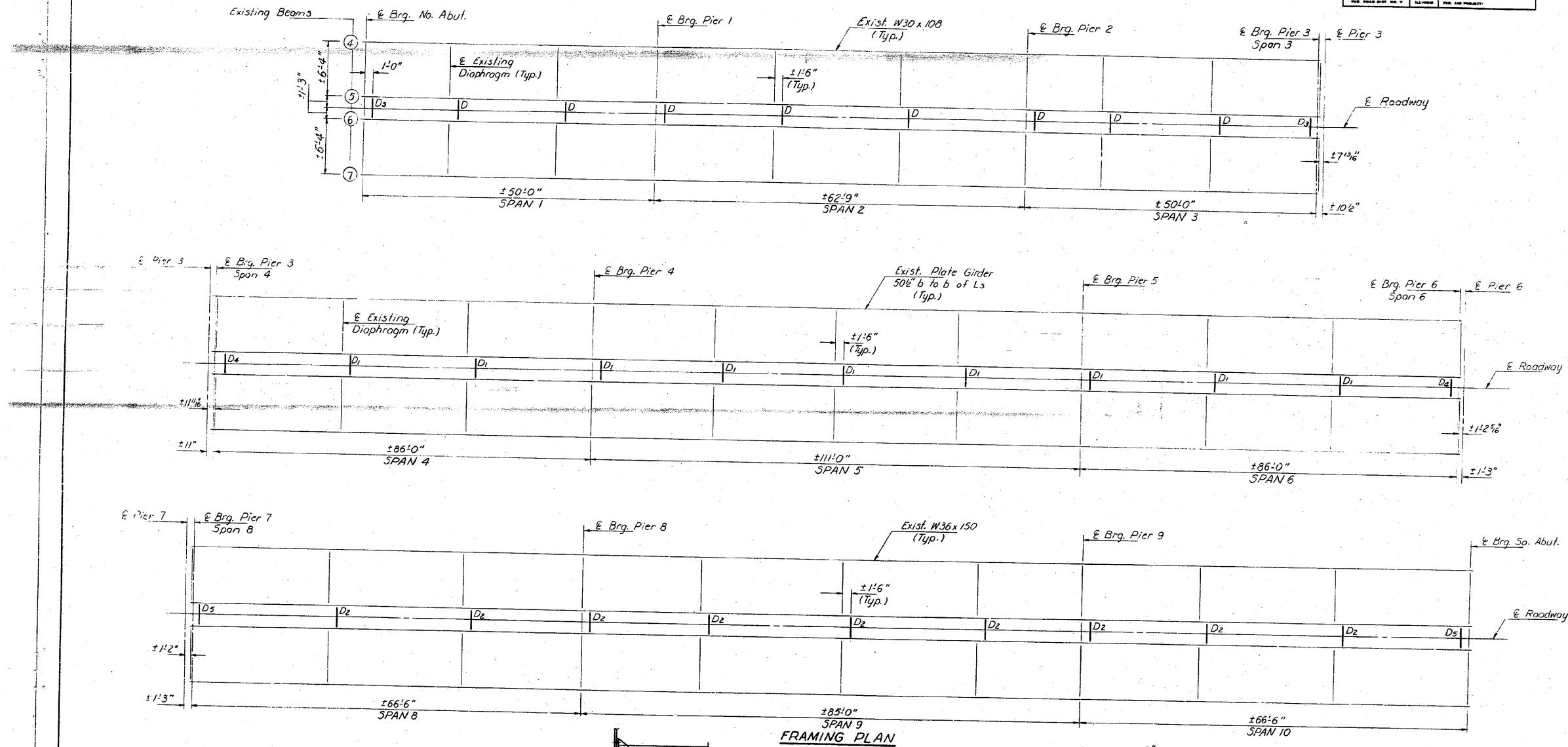


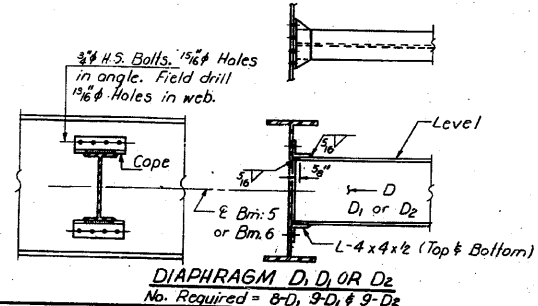
STATE OF ILLINOIS  
DEPARTMENT OF TRANSPORTATION

ROUTE NO.	SECTION	COUNTY	TOTAL SHEETS	SHEET NO.
14	64-IVBR	ST. CLAIR	23	20

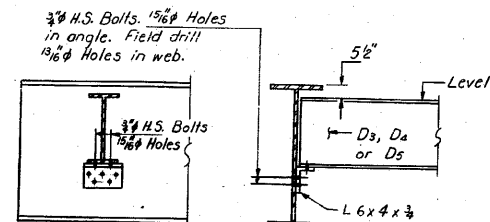
SHEET NO. 16  
18 SHEETS



FRAMING PLAN



DIAPHRAGM D<sub>1</sub>, D<sub>1</sub> OR D<sub>2</sub>  
No. Required = 8-D<sub>1</sub>, 9-D<sub>1</sub>, 9-D<sub>2</sub>



DIAPHRAGM D<sub>3</sub>, D<sub>4</sub> OR D<sub>5</sub>  
No. Required = 2-D<sub>3</sub>, 2-D<sub>4</sub> & 2-D<sub>5</sub>

STRUCTURAL STEEL DETAILS  
SPANS 1 THRU 6 AND 8 THRU 10  
FA. RT. 14 SEC. 64-IVB1  
ST. CLAIR COUNTY  
STA. 281+07.13

DESIGNED: *Richard Balice*  
CHECKED: *David Deffen*  
DRAWN: *R. Doty*  
CHECKED: *D.G.*

EXAMINED: *James J. Hoffman*  
APPROVED: *James J. Hoffman*  
DIRECTOR OF HIGHWAYS

FEB. 4 1981

FOR INFORMATION ONLY

FILE NAME =	USER NAME = CFC..	DESIGNED -	REVISED -
...157-DB76882-exist-bridge-repair-plans	27.dgn	DRAWN -	REVISED -
	PLOT SCALE = 40.000000 "/ IN.	CHECKED -	REVISED -
CB JOB NO 09021	PLOT DATE = 8/5/2010	DATE - / /	REVISED -

STATE OF ILLINOIS  
DEPARTMENT OF TRANSPORTATION

SN 082-0030 PLANS  
(REHABILITATION PLANS)

SCALE:	SHEET NO.	OF	SHEETS	STA.	TO	STA.
--------	-----------	----	--------	------	----	------

**CB** Coombe-Bloxdorf P.C.  
- CIVIL ENGINEERS -  
- STRUCTURAL ENGINEERS -  
- LAND SURVEYORS -  
Design Firm License No. 184-002703

F.A.P. RTE.	SECTION	COUNTY	TOTAL SHEETS	SHEET NO.
312	64-IVBR	ST. CLAIR	259	157

CONTRACT NO. 76882  
ILLINOIS FED. AID PROJECT