

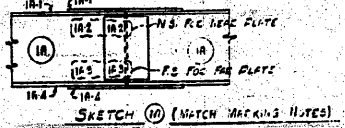
ERECTION NOTES

ERECTION MARKS ARE PRINTED IN THE SHOP IN AN UPRIGHT POSITION AND ON THE SAME ENDS OF MEMBERS AS THEY APPEAR ON FRAMING PLAN. MEMBERS MUST BE ERECTED WITH MARKS IN THESE POSITIONS. IF MARKS ARE SHOWN BY MIDDLE OF MEMBER ON THE PLAN, THE MEMBERS ARE SYMMETRICAL AND MAY BE TURNED END FOR END.

MEMBERS OF SPICE MATERIAL HAVE BEEN DENIED ASSEMBLED IN THE SHOP & MATCH-MARKED. P.E. FIELD ERECTION SEE SKETCH (10) AND NOTES PERTAINING TO MATCH-MARKING SYSTEM.

ALL FIELD CONNECTIONS ARE TO BE RIVETED EXCEPT EXPANSION JOINTS WHICH ARE TO BE FILLED WITH TURNED BOLTS AND MACHINE BOLTS, HANDRAILING, AND DIMPLESIGHTS, ETC. AT THE NORTH FACE AND DI AT PIER A'S WHICH SHALL BE BOLTED WITH MARKING BOLTS.

ERECTOR SHALL CONSULT FIRST AND BOLT TAPERS OFF SHEETS MARKED "P" TO DETERMINE THE PROPER SIZE AND LENGTH OF RIVETS AND BOLTS TO BE USED.



SKETCH (10) (MATCH MARKING NOTES)

INTERSECTION OF STRINGER LINE NUMBER AND SPICE LINE LETTER TO BE IDENTIFIED ON MATCH. THIS SHOP WILL APPEAR ON ENDS OF STRINGERS. THIS @ P.C. SPICE MATERIAL WILL HAVE THE SPICE MARK PLUS A DIFFERENT SURF. NUMBER P.C. EACH INDIVIDUAL PIECE OF SPICE MATERIAL THIS @P.C. IN P.C. CORRESPONDING MARKS WILL ALSO BE APPLIED ON STRINGER FOR IDENTIFICATION OF SPICE MATERIAL. THE MATCH MARK MUST BE KEPT TURNED THE OPPOSITE END IN POSITION CLOSELY RELATED WITH CORRESPONDING MATCH-MARK ON STRINGER.

FOR INFORMATION ONLY

FILE NAME =	USER NAME = tharp1	DESIGNED -	REVISED -	STATE OF ILLINOIS DEPARTMENT OF TRANSPORTATION	EXISTING STEEL SHOP DRAWINGS			F.A.P. RTE. 312	SECTION 64-1VBR	COUNTY ST. CLAIR	TOTAL SHEETS 259	SHEET NO. 165
ca:\work\pk1dot\tharp1\dms71738\0676892-shr-fab-plans.dgn	PLT SCALE = 50,0000 / IN.	DRAWN -	REVISED -		SCALE: N/A	SHEET NO. OF 67 SHEETS	STA. TO STA.	CONTRACT NO. 76882				
PLOT DATE = 5/17/2010	DATE -	CHECKED -	REVISED -		ILLINOIS FED. AID PROJECT							
		DATE -	REVISED -									