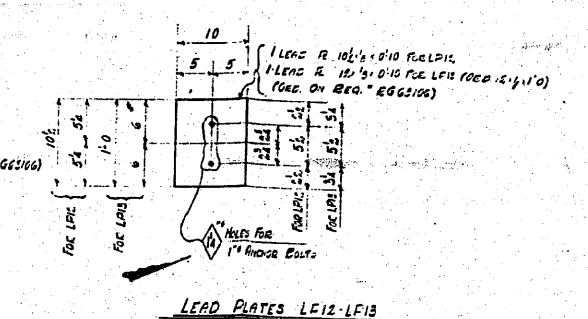
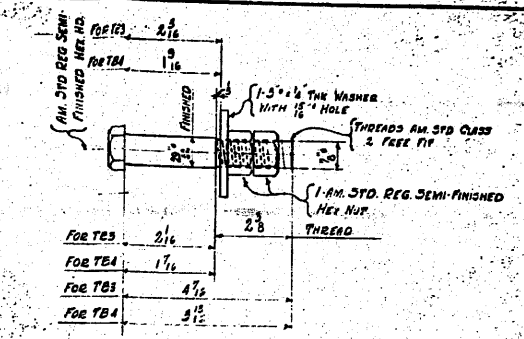


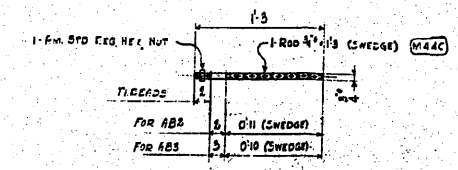
LEAD PLATES LPS LPA LPS LPO



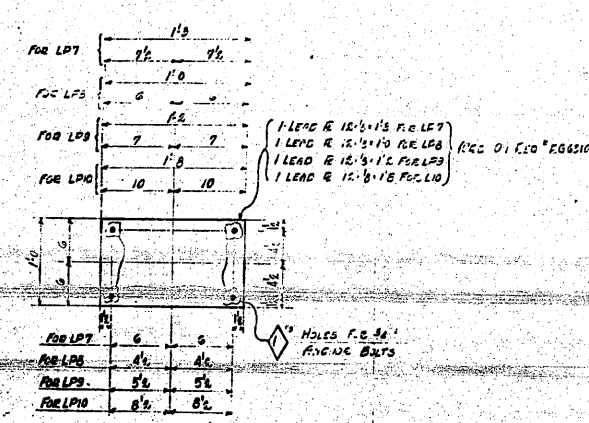
LEAD PLATES LF12-LF13



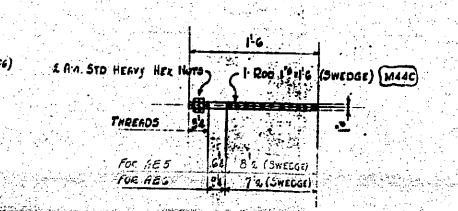
TURNUED BOLTS TBS & TBA



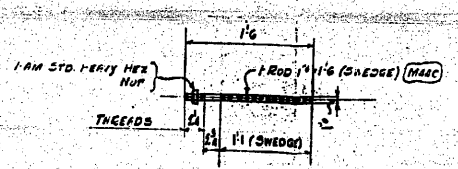
ANCHOR BOLTS AB5-AB6



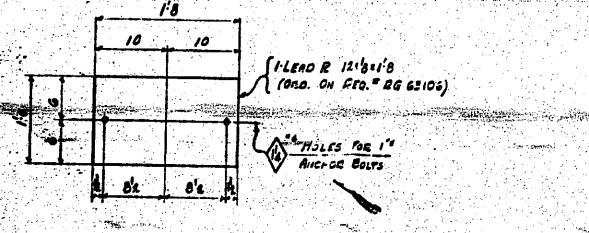
LEAD PLATES LPT-LPS-LPS-LPO



ANCHOR BOLTS AB5-AB6



ANCHOR BOLT AB4



LEAD PLATE LP11

TOTAL NO. SHEETS	DESCRIPTION	NO. SHEETS	SECTION
10	LEAD PLATES	10	
10		10	
15		10	
10		10	
10		10	
10		10	
20		20	
10		10	
10		10	
10		10	
10		10	
220	ANCHOR BOLTS	120	20
40		40	
10		10	
10		10	
20	Do	20	
176	TURNUED BOLTS	176	
64	Do	64	

GRADE DIMENSION FOR MISSOURI PACIFIC R.R.
PROJECT #4101A ROUTE 6 SECTION 64-1VBR
ADJ. OF E.P. OF ST. CLAIR COUNTY, ILLINOIS

BETHLEHEM STEEL COMPANY
PRODUCED FROM APPROVED
SPECIFICATIONS OF BETHLEHEM STEEL COMPANY

IN PHASER DR. ROCHER WIDE WY. 11
CHECKED BY: _____ TRACED BY: _____
REVISED BY: _____ LAST ASSEMBLY: _____

CONTRACT CG 3567

FOR INFORMATION ONLY