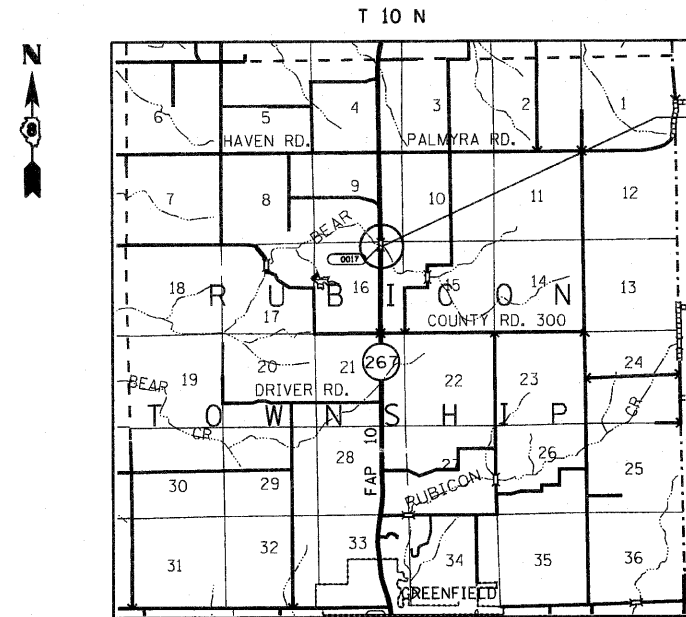
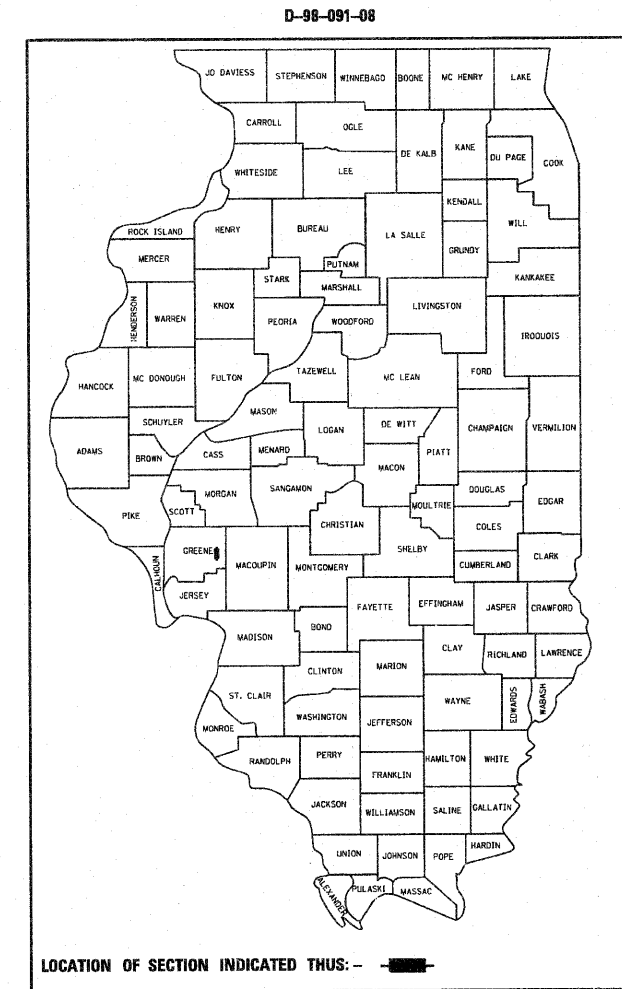


F.A.P. RTE.	SECTION	COUNTY	TOTAL SHEETS	SHEET NO.
10	3B-1	GREENE	59	1
FED. ROAD DIST. NO.		ILLINOIS	CONTRACT NO. 76C15	

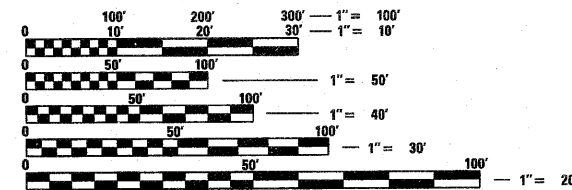
STATE OF ILLINOIS
DEPARTMENT OF TRANSPORTATION
DIVISION OF HIGHWAYS
**PROPOSED
HIGHWAY PLANS**

FOR INDEX OF SHEETS, SEE SHEET NO. 2

FAP ROUTE 10 (IL 267)
SECTION 3B-1
PROJECT: ACBRF-0010(077)
GREENE COUNTY
STRUCTURE REPLACEMENT
C-98-031-10



PROPOSED SINGLE SPAN W40 BEAM
BRIDGE OVER BEAR CREEK
90'-0" BACK TO BACK ABUTS, 30°
AHEAD LEFT SKEW STA 222+94.00
SN 031-0017 (E), SN 031-0044 (P)

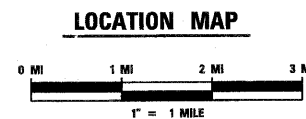


FULL SIZE PLANS HAVE BEEN PREPARED USING STANDARD ENGINEERING SCALES. REDUCED SIZED PLANS WILL NOT CONFORM TO STANDARD SCALES. IN MAKING MEASUREMENTS ON REDUCED PLANS, THE ABOVE SCALES MAY BE USED.

J.U.L.I.E.
JOINT UTILITY LOCATION INFORMATION FOR EXCAVATION
1-800-892-0123
OR 811

ADT 2200 (2008)
ADT 2700 (2028)
SU 5.8%
MU 14.0%

DESIGN DESIGNATION
N/A



PROJECT ENGINEER: PATTI LeBEAU 346-3179
PROJECT MANAGER: ARTHUR MUEHLFELD 346-3209

LATITUDE 39° 24' 16"
LONGITUDE 90° 12' 45"

GROSS LENGTH 0.017 MI
NET LENGTH 0.017 MI

CONTRACT NO. 76C15

STATE OF ILLINOIS
DEPARTMENT OF TRANSPORTATION
DIVISION OF HIGHWAYS

SUBMITTED July 26 20 10

Mary C. Jamel
DEPUTY DIRECTOR OF HIGHWAYS, REGION 5 ENGINEER

October 1 20 10

Scott E. Stitt P.E.
acting ENGINEER OF DESIGN AND ENVIRONMENT

October 1 20 10

Christine M. Reed
DIRECTOR OF HIGHWAYS, CHIEF ENGINEER

**PRINTED BY THE AUTHORITY
OF THE STATE OF ILLINOIS**