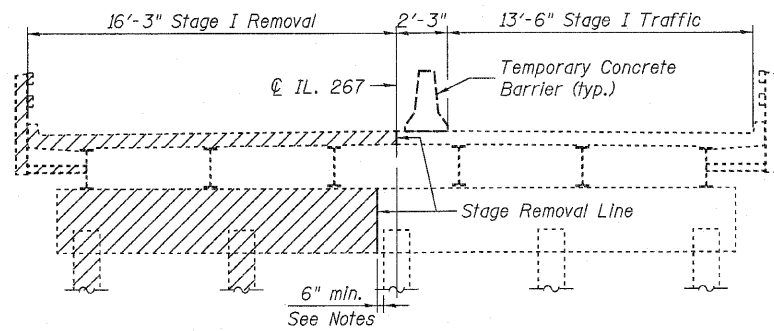
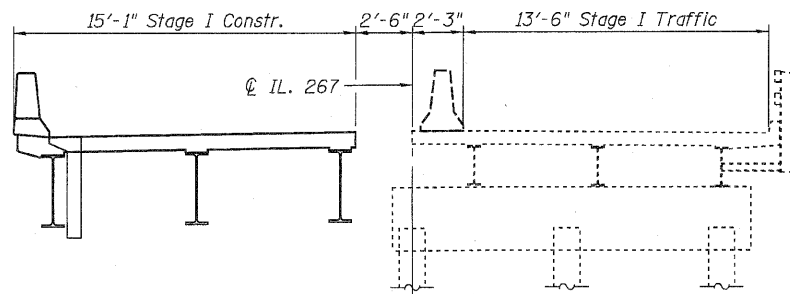


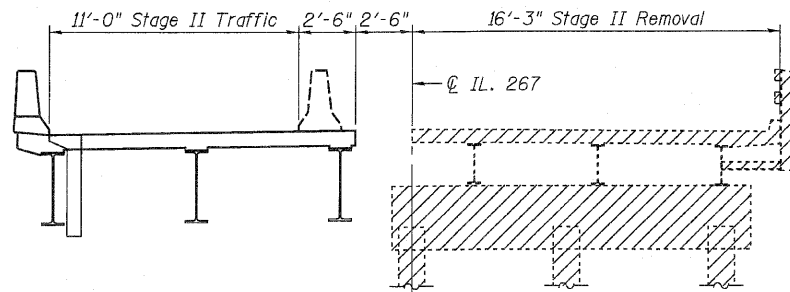
STATE OF ILLINOIS
DEPARTMENT OF TRANSPORTATION



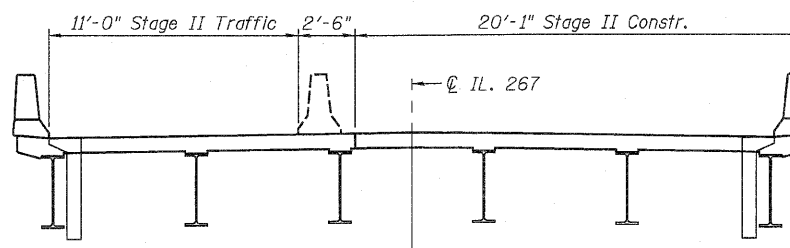
STAGE I REMOVAL
(Looking North)



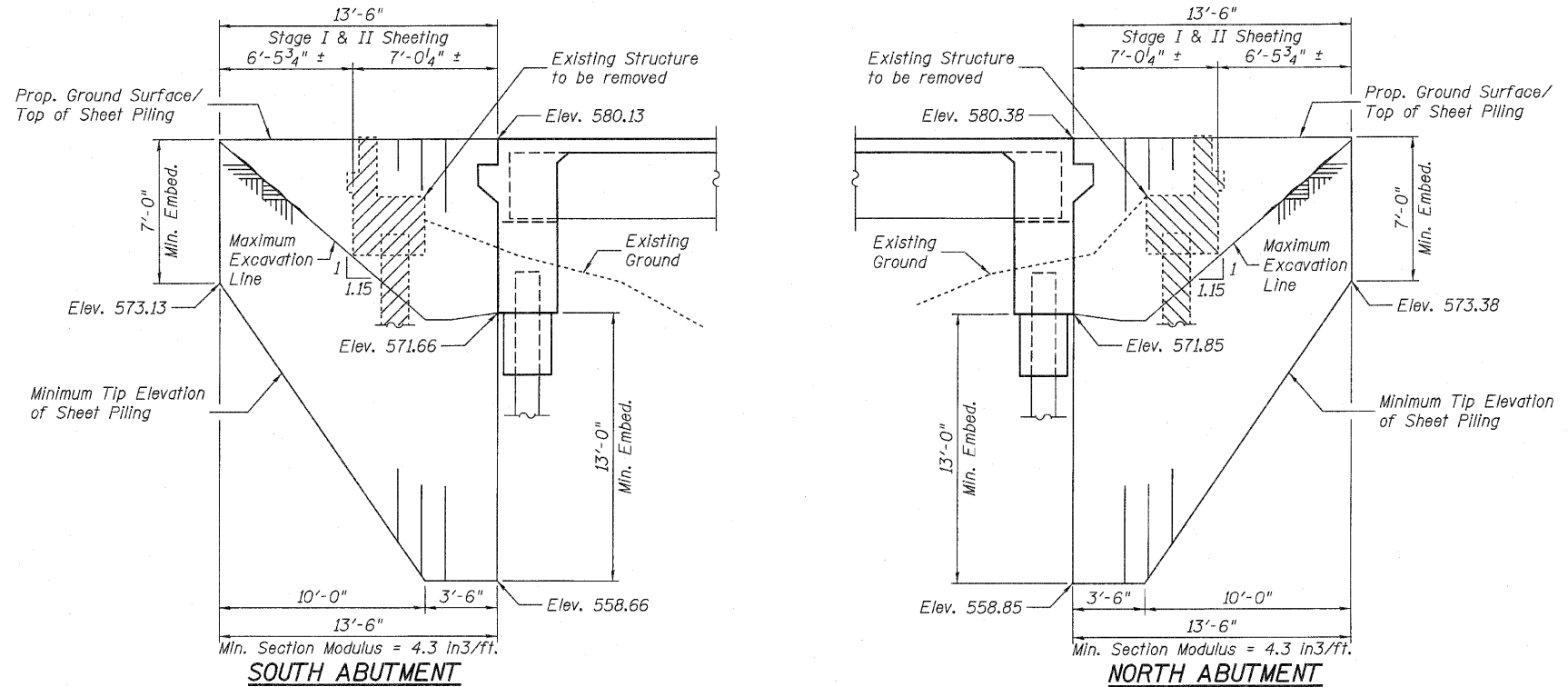
STAGE I CONSTRUCTION



STAGE II REMOVAL



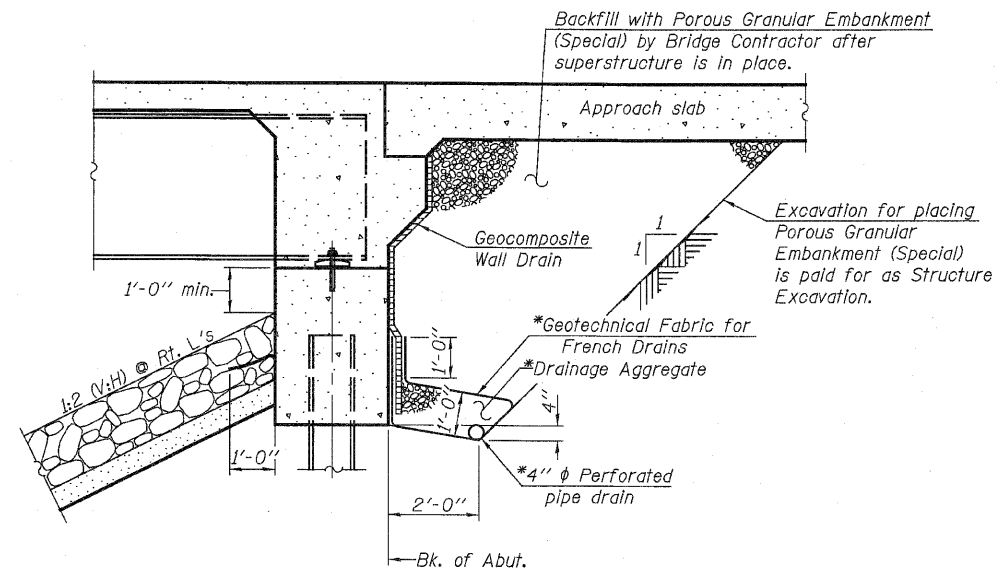
STAGE II CONSTRUCTION



TEMPORARY SHEET PILING DETAILS

(Slopes and horizontal dimensions are measured parallel to CL roadway)

If the Contractor chooses to alter the temporary cantilevered sheet piling design requirements shown on plans, a design submittal including plan details and calculations will be required for review and acceptance by the Engineer.



SECTION THRU INTEGRAL ABUTMENT

(Horiz. dim. @ Rt. L's)

*Included in the cost of Pipe Underdrains for Structures.

Note:
All drainage system components shall extend to 2'-0" from the end of each wingwall except an outlet pipe shall extend until intersecting with the side slopes. The pipes shall drain into concrete headwalls. (See Article 601.05 of the Standard Specifications and Highway Standard 601101).

Notes:
Stage Removal Line at Abutments & Piers shall be perpendicular to skew (not parallel to CL Rdwy.).
Hatched area indicates Removal of Existing Structures.
Removal of existing railing is included with Removal of Existing Structures.
For quantity and location of Temporary Concrete Barrier, see Roadway Plans.

STAGE CONSTRUCTION DETAILS
STRUCTURE NO. 031-0044

SHEET 2 OF 20	F.A.P. RTE.	SECTION	COUNTY	TOTAL SHEETS	SHEET NO.
	10	38-1	GREENE	59	27
	STA. 222+94.00			CONTRACT NO. 76C15	
FED. ROAD DIST. NO.		ILLINOIS FED. AID PROJECT			

JD Johnson, Depp & Quisenberry
CONSULTING ENGINEERS
Springfield, Illinois

DESIGNED: JDQ	DRAWN: SJS
CHECKED: DCD	CHECKED: DCD