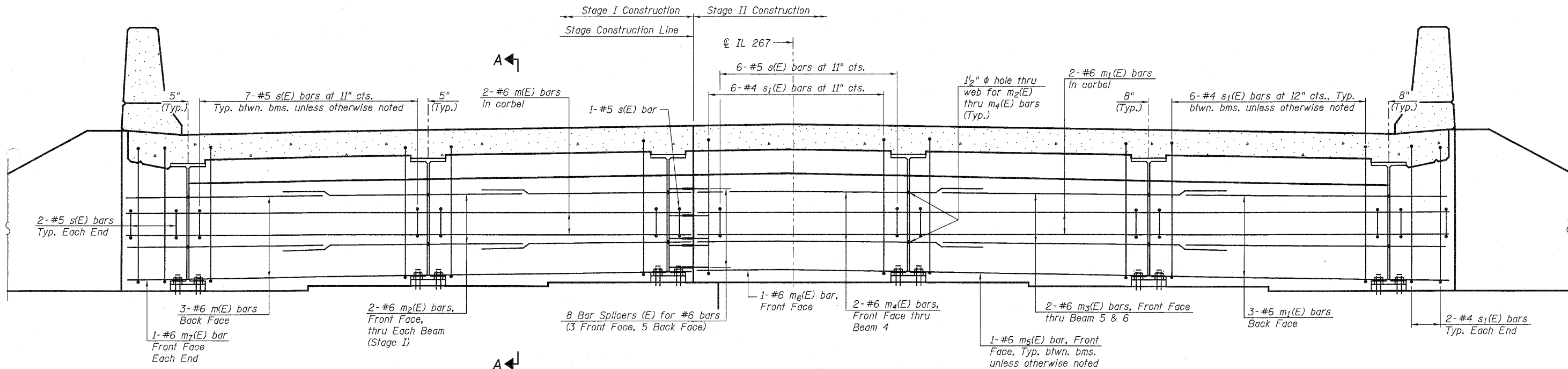


STATE OF ILLINOIS  
DEPARTMENT OF TRANSPORTATION



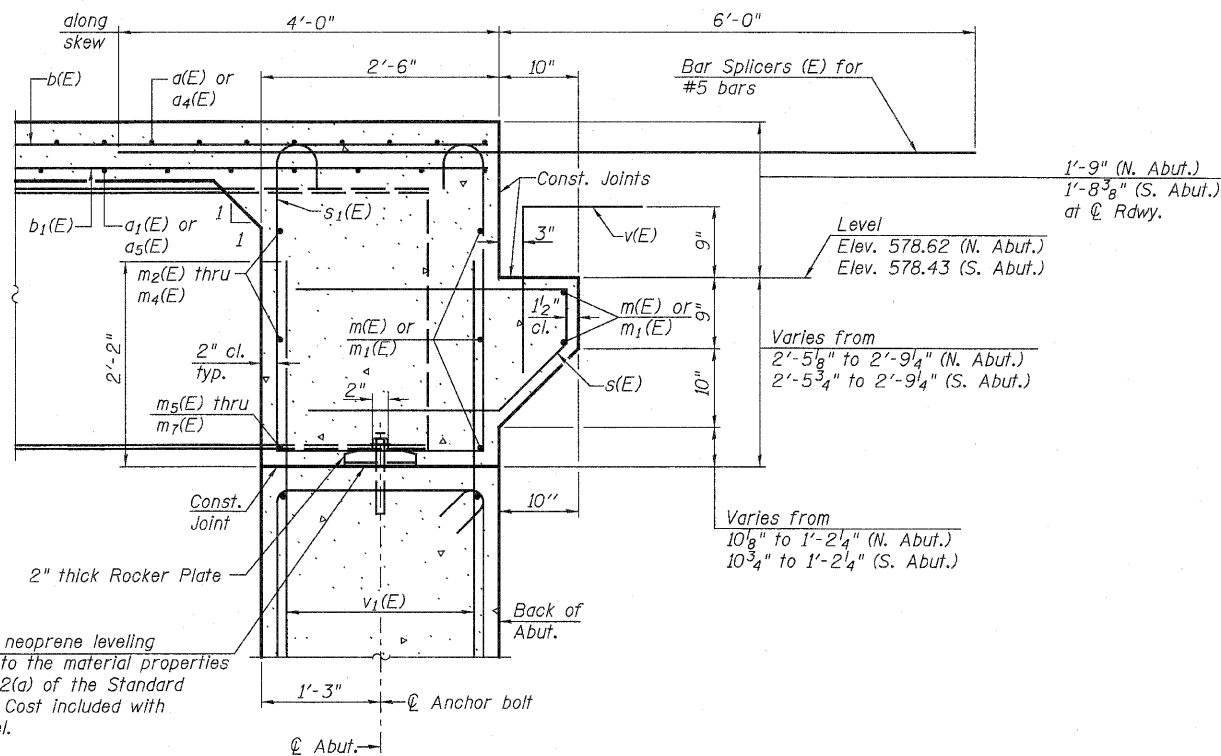
**DIAPHRAGM ELEVATION AT NORTH ABUTMENT**

(Looking North)  
(South Abutment mirrored about Stage Construction Line)

Notes:  
Reinforcement bars in diaphragm are billed with superstructure on sheet 9 of 20.  
Concrete in diaphragm is included with Concrete Superstructure on sheet 9 of 20.  
For details of bars s(E) & s<sub>1</sub>(E) see sheet 9 of 20.  
The s(E) and s<sub>1</sub>(E) bars shall be placed parallel to the beams. Spacing for these bars shall be at right angles to the beams.  
For location of holes thru web, see sheet 14 of 20.

**MIN. BAR LAP**

#6 bar = 3'-4"



**SECTION A-A**

(Dimensions at right angles to abutment, except as shown.)

**INTEGRAL ABUTMENT  
DIAPHRAGM DETAILS  
STRUCTURE NO. 031-0044**

<b>LIN ENGINEERING, LTD.</b> Consulting Engineers Channah, Illinois	
DESIGNED: ESH	DRAWN: ESH
CHECKED: MTH	CHECKED: MTH

SHEET 8 OF 20	F.A.P. RTE. 10	SECTION 3B-1	COUNTY GREENE	TOTAL SHEETS 59	SHEET NO. 33
	STA. 222+94.00			CONTRACT NO. 76C15	
	FED. ROAD DIST. NO.		ILLINOIS FED. AID PROJECT		