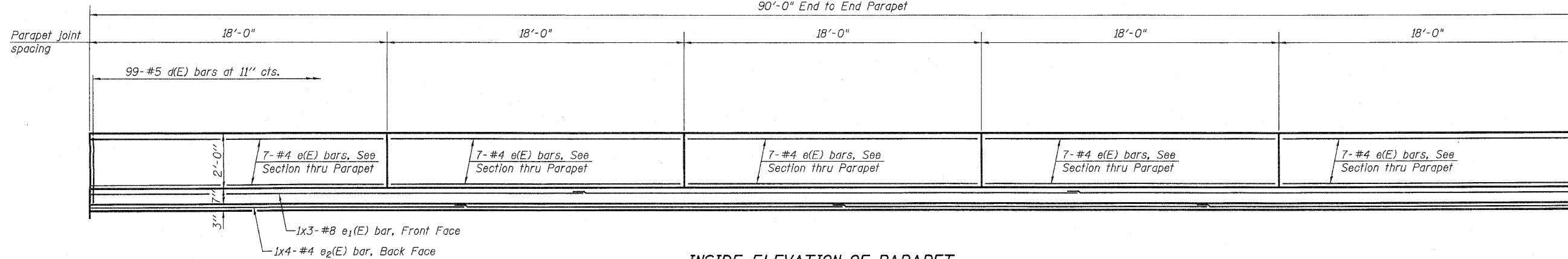


STATE OF ILLINOIS
DEPARTMENT OF TRANSPORTATION

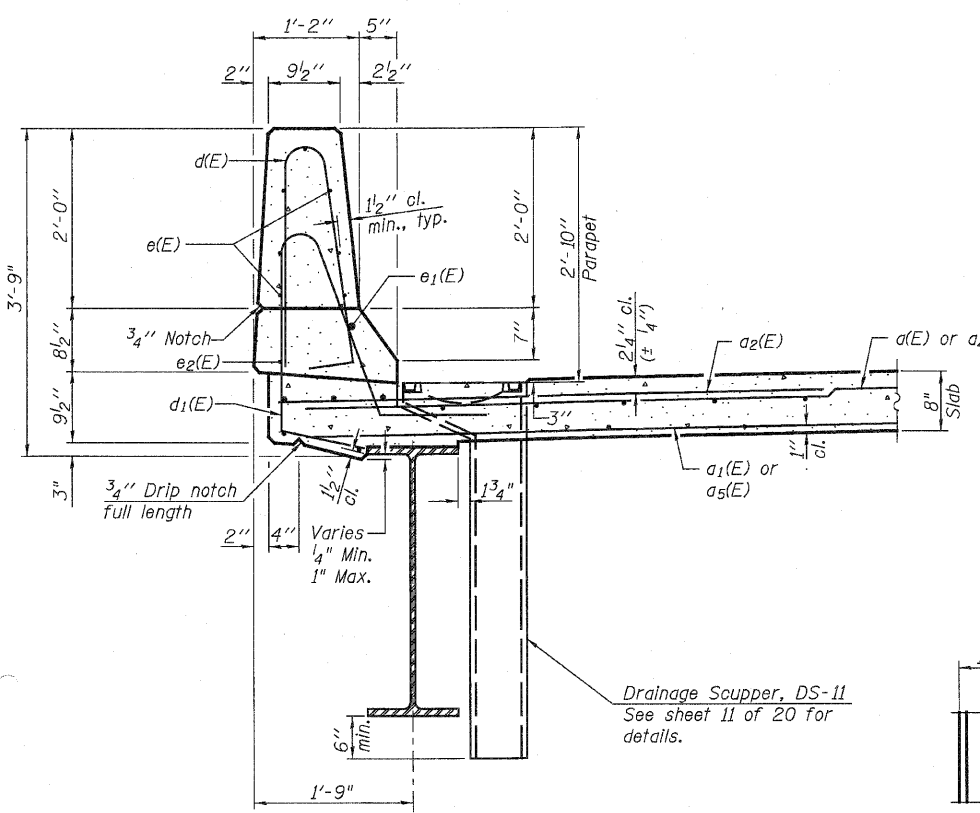
90'-0" End to End Parapet



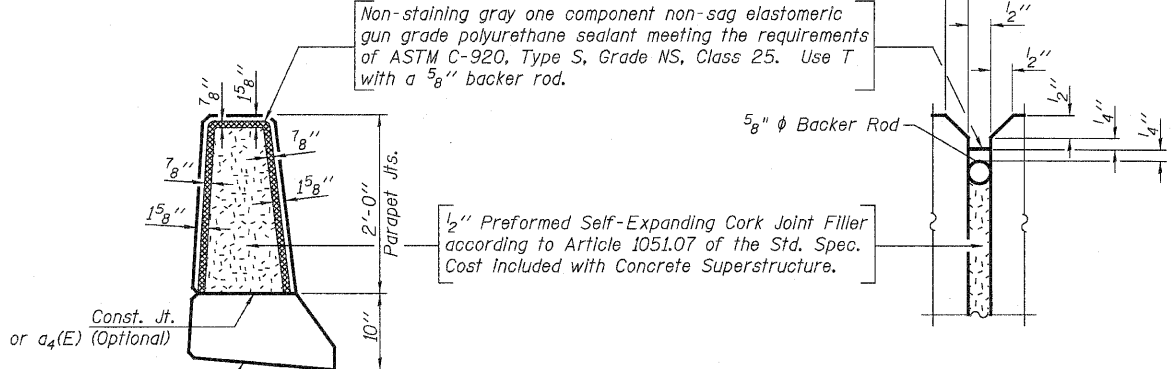
INSIDE ELEVATION OF PARAPET

MINIMUM BAR LAP

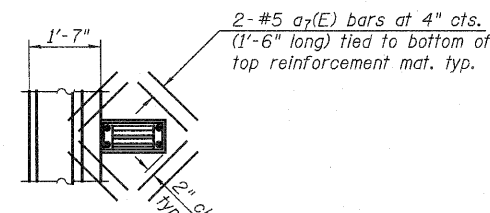
(Parapet)
#4 bar = 2'-0"
#8 bar = 5'-2"



SECTION THRU PARAPET

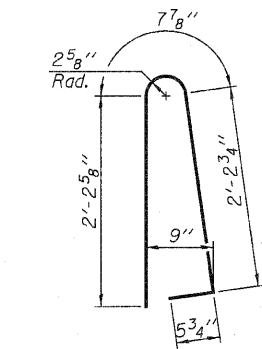


PARAPET JOINT DETAILS

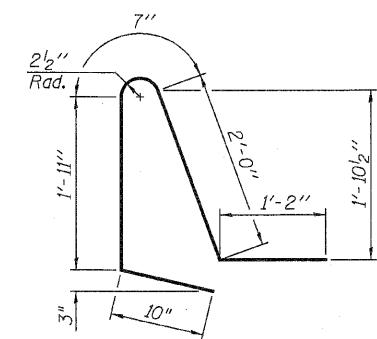


DETAIL 1

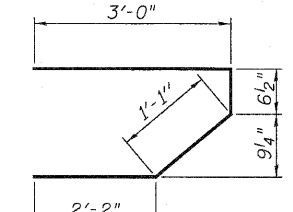
Note:
Cut longitudinal reinforcement to clear drainage scuppers.



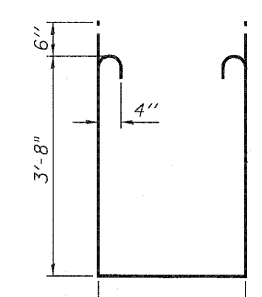
BAR d(E)



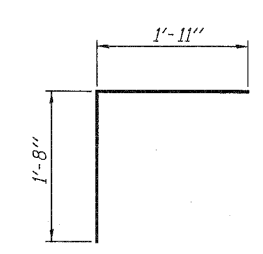
BAR d1(E)



BAR s(E)



BAR s1(E)



BAR v(E)

SUPERSTRUCTURE
BILL OF MATERIAL

Bar	No.	Size	Length	Shape
a(E)	166	#5	14'-8"	—
a1(E)	108	#5	14'-4"	—
a2(E)	320	#6	6'-6"	—
a3(E)	4	#5	16'-11"	—
a4(E)	166	#5	19'-8"	—
a5(E)	108	#5	19'-4"	—
a6(E)	4	#5	22'-8"	—
a7(E)	48	#5	1'-6"	—
b(E)	195	#5	20'-0"	—
b1(E)	136	#5	24'-5"	—
d(E)	198	#5	5'-7"	U
d1(E)	198	#5	6'-6"	U
e(E)	70	#4	17'-9"	—
e1(E)	6	#8	33'-5"	—
e2(E)	8	#4	24'-0"	—
m(E)	10	#6	17'-1"	—
m1(E)	10	#6	22'-10"	—
m2(E)	12	#6	8'-0"	—
m3(E)	8	#6	9'-0"	—
m4(E)	4	#6	11'-9"	—
m5(E)	8	#6	5'-11"	—
m6(E)	2	#6	5'-8"	—
m7(E)	4	#6	1'-1"	—
s(E)	78	#5	6'-10"	L
s1(E)	68	#4	10'-10"	L
v(E)	70	#5	3'-7"	L
Reinforcement Bars, Epoxy Coated		Pound	26950	
Concrete Superstructure		Cu. Yds.	128.8	

Bars indicated thus 1 x 3 - #8 etc. indicates 1 line of bars with 3 lengths per line.

SUPERSTRUCTURE DETAILS
STRUCTURE NO. 031-0044

LINE ENGINEERING, LTD. Consulting Engineers Chatham, Illinois	
DESIGNED: ESH	DRAWN: ESH
CHECKED: MTH	CHECKED: MTH

SHEET 9 OF 20	F.A.P. RTE.	SECTION	COUNTY	TOTAL SHEETS	SHEET NO.
	10	38-1	GREENE	59	34
	STA. 222+94.00			CONTRACT NO.	T6C15
FED. ROAD DIST. NO.		ILLINOIS FED. AID PROJECT			