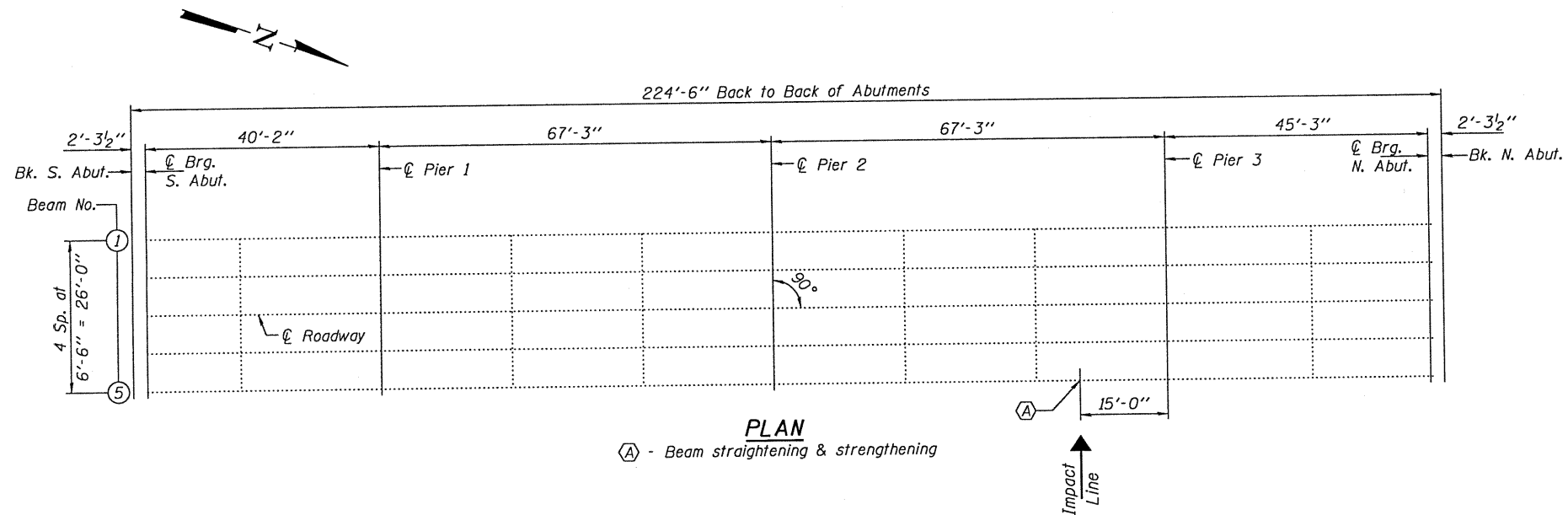


ELEVATION

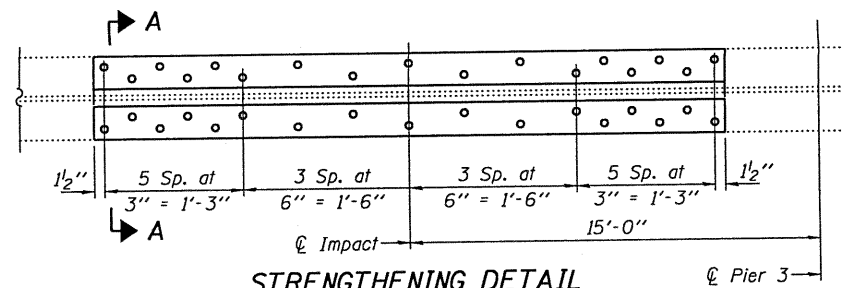


PLAN

(A) - Beam straightening & strengthening

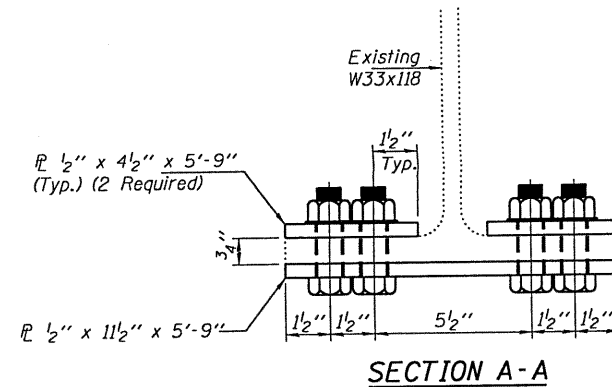


EXPIRES 11-30-2010



STRENGTHENING DETAIL

See Section A-A for dimensions not shown.



SECTION A-A

GENERAL NOTES

All structural steel shall conform to AASHTO Classification M-270 Gr. 36, unless otherwise noted.
 Fasteners shall be high strength bolts. Bolts 7/8"φ, open holes 15/16"φ, unless otherwise noted.
 After the new beam is in its final position and/or beam straightening operations have been completed, the Engineer in the field shall check to see that the top flange is tight against the slab. If not, the Contractor shall inject epoxy between the existing concrete deck and the top flange of the beam. See Special Provision "Epoxy Injection".
 Plan dimensions and details relative to existing plans are subject to nominal construction variations. The Contractor shall field verify existing dimensions and details affecting new construction and make necessary approved adjustments prior to construction or ordering of materials. Such variations shall not be cause for additional compensation for a change in scope of the work, however, the Contractor will be paid for the quantity actually furnished at the unit price bid for the work.
 The existing structural steel coating contains lead. The Contractor shall take appropriate precautions to deal with the presence of lead on this project.
 Existing structural steel that will be in contact with new structural steel shall be cleaned and painted prior to erection as required by the Special Provision "Cleaning and Painting Contact Surface Areas of Existing Steel Structures".
 All structural steel shall be shop painted with the inorganic zinc rich primer per AASHTO M300, Type 1. Cost included with Structural Steel Repair.

TOTAL BILL OF MATERIAL

ITEM	UNIT	TOTAL
Beam Straightening	LS	1
Structural Steel Repair	Pound	230

TR 112 OVER FAI 70
SN 003-0043

DESIGNED BY: <i>[Signature]</i>	EXAMINED BY: <i>[Signature]</i>	DATE: SEPTEMBER 15, 2010	STATE OF ILLINOIS DEPARTMENT OF TRANSPORTATION	PLAN AND ELEVATION	F.A.I. RTE. 70	SECTION 3-2HB-2-HOF	COUNTY BOND	TOTAL SHEETS 4	SHEET NO. 3	
CHECKED BY: <i>[Signature]</i>	PASSED BY: <i>[Signature]</i>				SHEET NO. 1 OF 2 SHEETS			CONTRACT NO. 76E50		
DRAWN BY: <i>[Signature]</i>					ILLINOIS FED. AID PROJECT					
CHECKED BY: <i>[Signature]</i>										