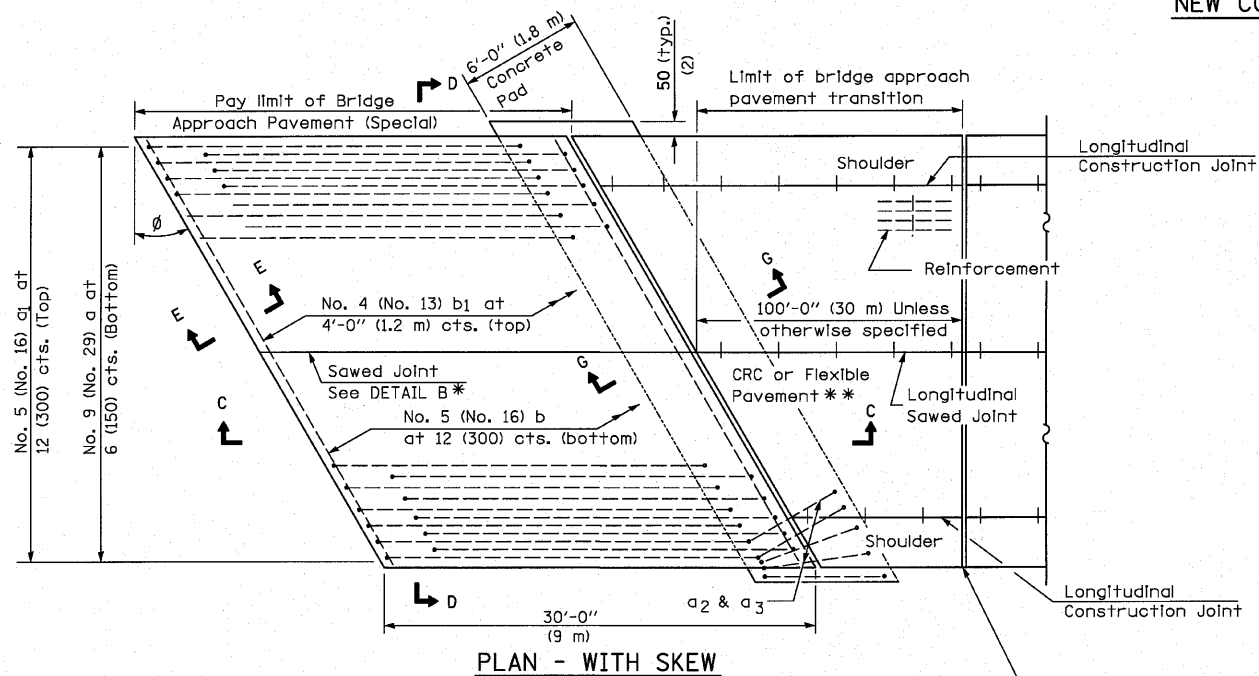
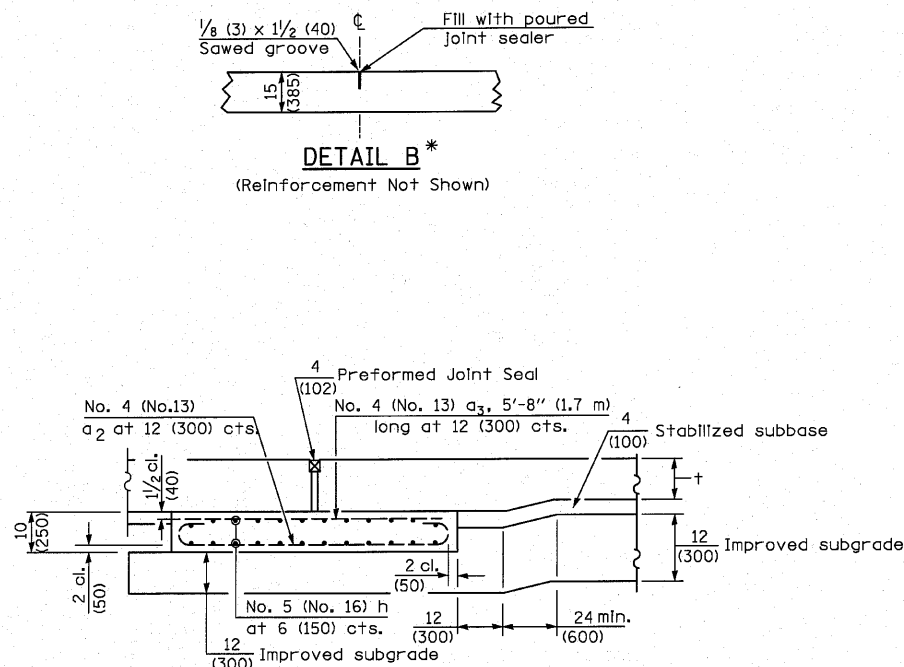


**NEW CONSTRUCTION**



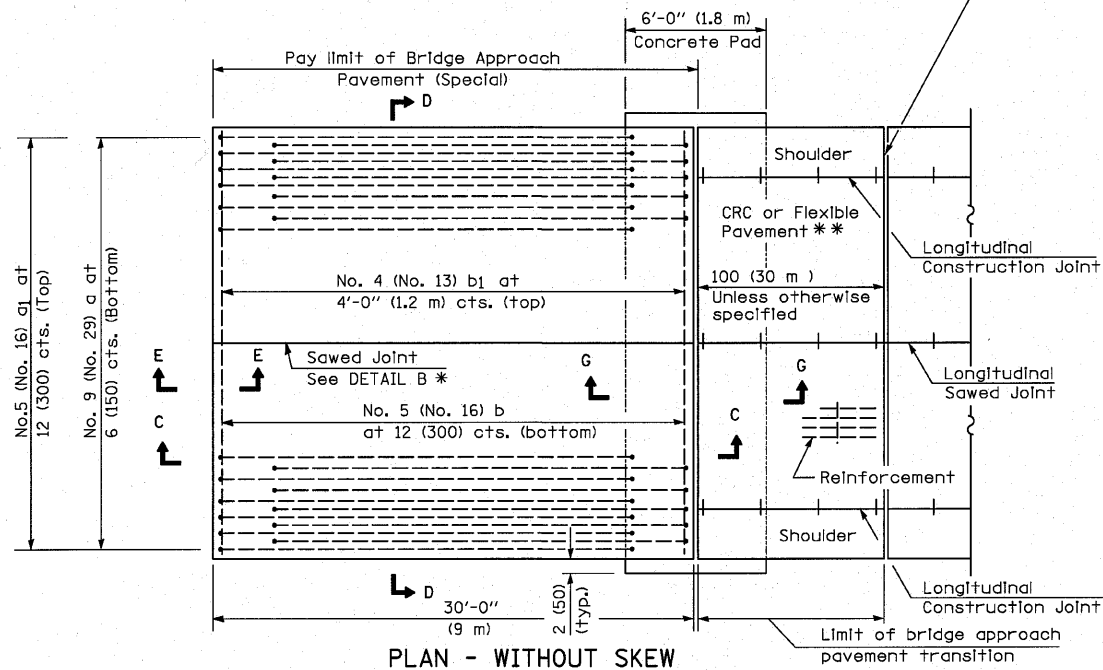
**PLAN - WITH SKEW**



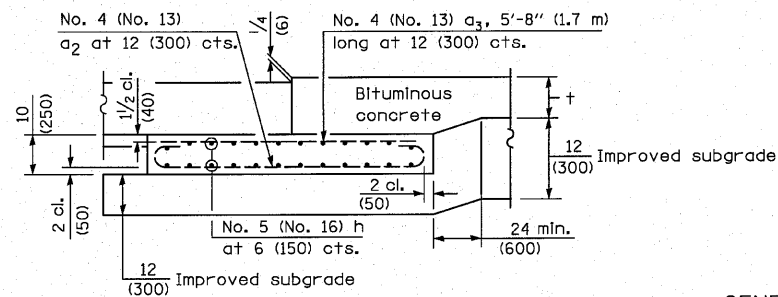
**SECTION G-G - RIGID PAVEMENT**

(Showing reinforcement)

Rigid Pavement only:  
Wide Flange Beam Terminal Joint (See DETAIL AT BEAM - Standard 421101 or 421106) or 2 (50) Trans. Exp. Joint as detailed on Standard 420001.



**PLAN - WITHOUT SKEW**



**SECTION G-G - FLEXIBLE PAVEMENT**

(Showing reinforcement)

**GENERAL NOTES**

- THICKNESS-"t"=Thickness of Pavement.
- See Standard 421001 for reinforcement details not shown.
- See Standard 420001 for joint details not shown.
- All dimensions are in inches (millimeters) unless otherwise shown.

**BRIDGE APPROACH PAVEMENT (SPECIAL)**

FILE NAME =	USER NAME = default	DESIGNED -	REVISED -	<b>STATE OF ILLINOIS DEPARTMENT OF TRANSPORTATION</b>	<b>DETAILS I-57 OVER UNION PACIFIC RAILROAD</b>			F.A.I. RTE.	SECTION	COUNTY	TOTAL SHEETS	SHEET NO.
H:\P\25866p2\Technical_Production\Civil\microstation\Sec283VB1\details283vb.dgn		DRAWN -	REVISED -		57	(28-3-1)VB-1	FRANKLIN	98	68			
PLOT SCALE = 50.0000' / IN.		CHECKED -	REVISED -		CONTRACT NO. 78068							
PLOT DATE = 8/13/2010		DATE -	REVISED -		ILLINOIS FED. AID PROJECT							
					SCALE:	SHEET NO.	OF SHEETS	STA.	TO STA.			