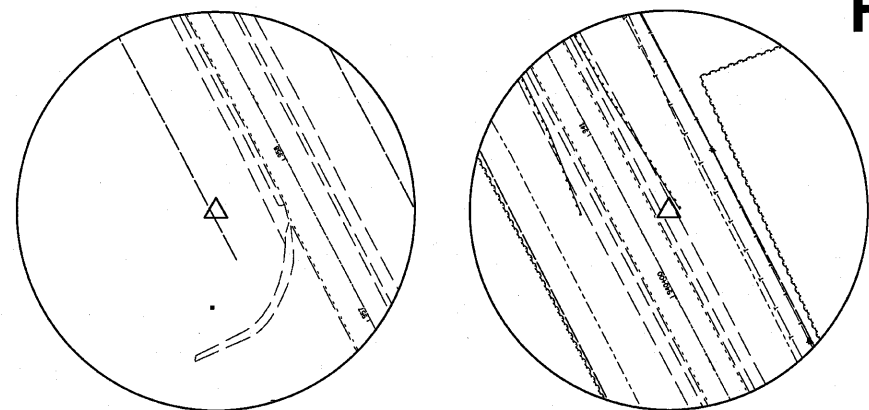


HORIZONTAL AND VERTICAL CONTROL



HORIZONTAL CONTROL POINT NO. 1

HORIZONTAL CONTROL POINT NO. 2

CURVE POINT NUMBERS					
CHAIN	CURVE	PI	CC	PC	PT
IL40	210	210	211	212	213
IL40	220	220	221	222	223
IL40	230	230	231	232	233

REFERENCE TIES				
POINT	CHAIN	STATION	OFFSET	DESCRIPTION

HORIZONTAL CONTROL POINTS							
POINT	NORTH	EAST	ELEVATION	CHAIN	STATION	OFFSET	DESCRIPTION
1	1886098.7970	2422202.9530	678.1730	IL40	957+92.60	47.4829' LT	GPS CONTROL POINT, GPS CONTROL POINT
2	1884581.7130	2423076.8970	657.2039	IL40	940+43.05	18.6655' RT	GPS CONTROL POINT

SURVEY WORK POINTS							
POINT	NORTH	EAST	ELEVATION	CHAIN	STATION	OFFSET	DESCRIPTION
100	1884825.3800	2422943.7460	659.6530	IL40	943+20.69	14.427' RT	TOPO SURVEY POINT, TOPO SURVEY POINT
101	1884924.4280	2422891.5580	660.5220	IL40	944+32.64	14.4174' RT	TOPO SURVEY POINT, TOPO SURVEY POINT
102	1884897.5580	2423176.2970	648.1100	IL40	942+76.16	253.8159' RT	TOPO SURVEY POINT, TOPO SURVEY POINT
103	1883952.8770	2422569.8330	650.4260	IL40	937+23.01	723.0407' LT	TOPO SURVEY POINT, TOPO SURVEY POINT
104	1884757.3740	2423489.3670	651.0540	IL40	940+06.22	465.4677' RT	TOPO SURVEY POINT, TOPO SURVEY POINT
105	1884782.3540	2422934.5210	659.4110	IL40	942+86.92	13.788' LT	TOPO SURVEY POINT, TOPO SURVEY POINT
106	1884903.7680	2423005.7010	641.6620	IL40	943+61.17	105.776' RT	TOPO SURVEY POINT, TOPO SURVEY POINT

BENCH MARKS							
POINT	NORTH	EAST	ELEVATION	CHAIN	STATION	OFFSET	DESCRIPTION
401	1886045.5140	2422200.9110	679.4461	IL40	957+46.41	74.1233' LT	R.O.W. MARKER, R.O.W. MARKER
402	1884919.0130	2422858.9040	658.5722	IL40	944+43.07	16.9969' LT	R.O.W. MARKER

Curve Data

Curve 210
 P.I. Station 915+30.11 N 1,882,337.0028 E 2,424,238.2820
 Delta = 28° 04' 23.81" (LT)
 Degree = 4° 00' 29.26"
 Tangent = 357.3830'
 Length = 700.4088'
 Radius = 1,429.4898'
 External = 43.9971'
 Long Chord = 693.4236'
 Mid. Ord. = 42.6834'
 P.C. Station 911+72.73 N 1,881,979.6245 E 2,424,236.4504
 P.T. Station 918+73.14 N 1,882,653.1961 E 2,424,071.7157
 C.C. N 1,881,986.9507 E 2,422,806.9793

Course from PT 210 to PC 220 N 27° 46' 46.68" W Dist 4,354.7916'

Curve Data

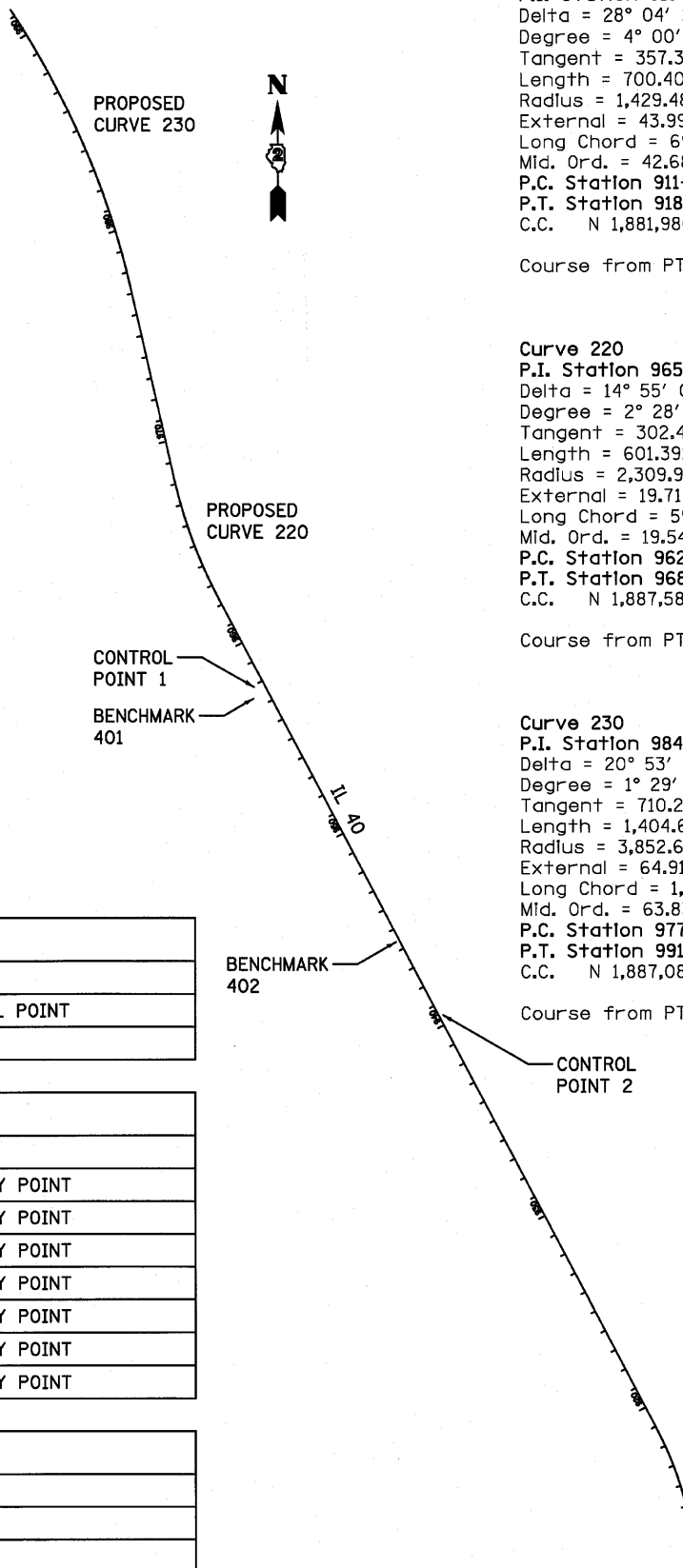
Curve 220
 P.I. Station 965+30.34 N 1,886,773.6365 E 2,421,901.1253
 Delta = 14° 55' 01.85" (RT)
 Degree = 2° 28' 49.59"
 Tangent = 302.4062'
 Length = 601.3922'
 Radius = 2,309.9030'
 External = 19.7110'
 Long Chord = 599.6951'
 Mid. Ord. = 19.5442'
 P.C. Station 962+27.93 N 1,886,506.0836 E 2,422,042.0685
 P.T. Station 968+29.32 N 1,887,068.4546 E 2,421,833.8063
 C.C. N 1,887,582.6651 E 2,424,085.7475

Course from PT 220 to PC 230 N 12° 51' 44.84" W Dist 899.6439'

Curve Data

Curve 230
 P.I. Station 984+39.18 N 1,888,637.9197 E 2,421,475.4330
 Delta = 20° 53' 22.91" (LT)
 Degree = 1° 29' 13.80"
 Tangent = 710.2171'
 Length = 1,404.6646'
 Radius = 3,852.6815'
 External = 64.9151'
 Long Chord = 1,396.8975'
 Mid. Ord. = 63.8394'
 P.C. Station 977+28.97 N 1,887,945.5239 E 2,421,633.5354
 P.T. Station 991+33.63 N 1,889,228.4289 E 2,421,080.8353
 C.C. N 1,887,087.8734 E 2,417,877.5281

Course from PT 230 to PC 240 N 33° 45' 07.75" W Dist 1,305.5167'



FILE NAME = F:\CIBEL WEST Projects\2009\121102_W09_IL40_Cv1\Ugn\Shk\288-854-shk-01B.dgn

WILLS BURKE KELSEY ASSOCIATES LTD.
 116 West Main Street, Suite 201
 St. Charles, Illinois 60174
 (630) 443-7755

USER NAME = #USER#	DESIGNED -	REVISED -
PLOT SCALE =	DRAWN -	REVISED -
PLOT DATE = 8/2/2010	CHECKED -	REVISED -
	DATE - 8/6/10	REVISED -

**STATE OF ILLINOIS
DEPARTMENT OF TRANSPORTATION**

HVC SHEET

SCALE: SHEET NO. 21 OF 90 SHEETS STA. TO STA.

F.A.P. RTE.	SECTION	COUNTY	TOTAL SHEETS	SHEET NO.
646	8BR-1	WHITESIDE	90	21
CONTRACT NO. 84854				
FED. ROAD DIST. NO. 2 ILLINOIS FED. AID PROJECT				