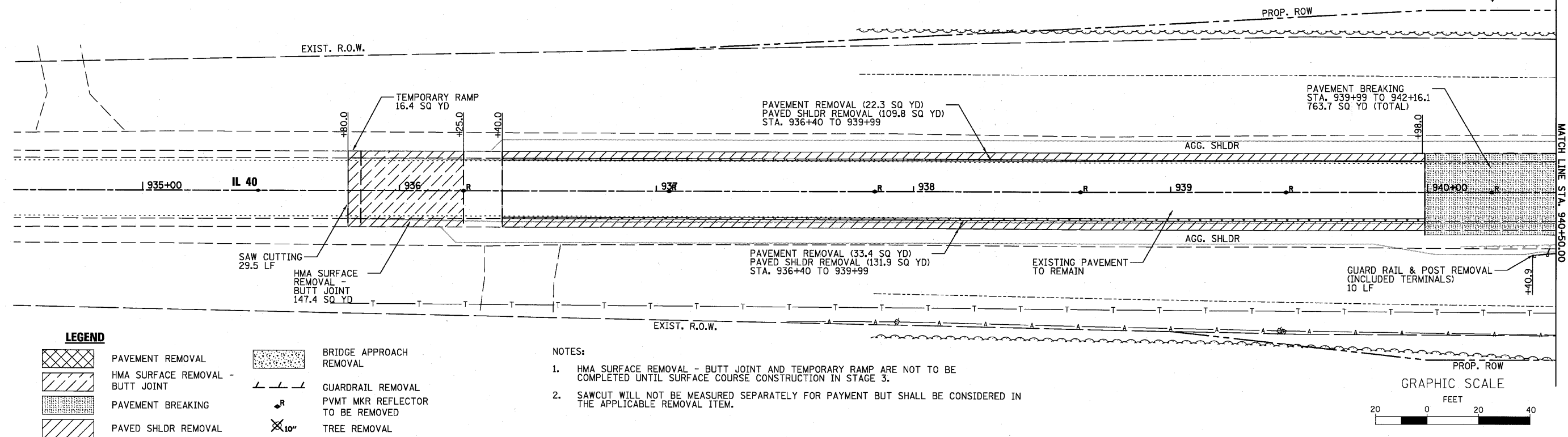


REMOVAL PLAN

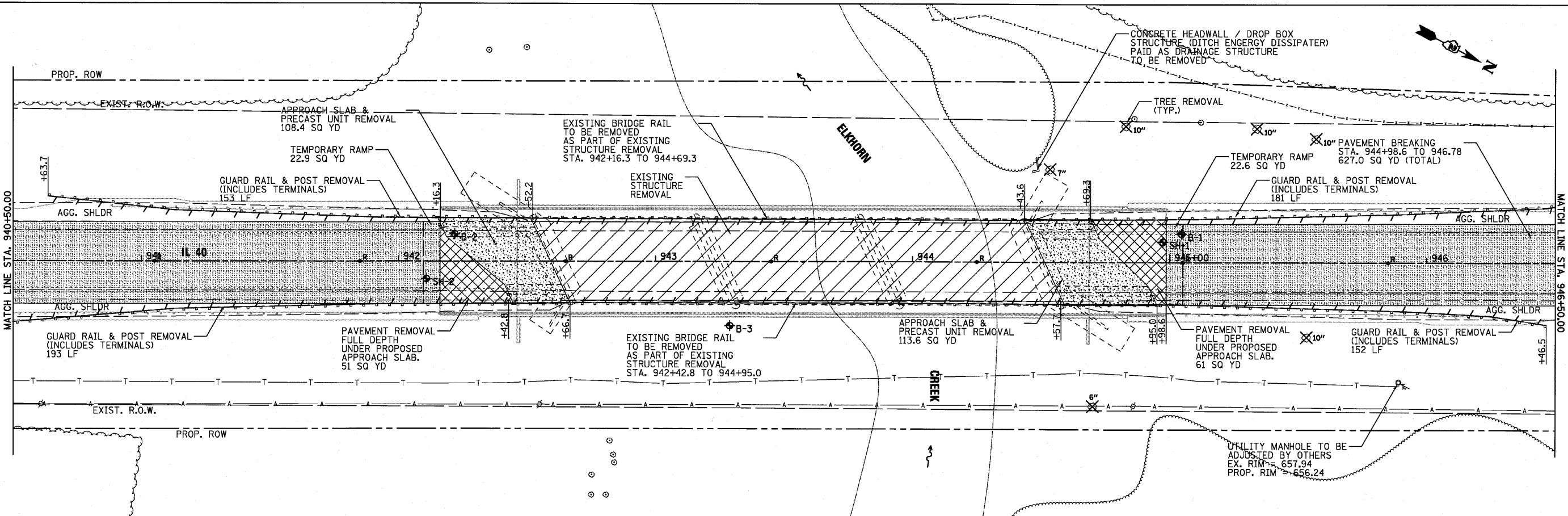


LEGEND

- PAVEMENT REMOVAL
- HMA SURFACE REMOVAL - BUTT JOINT
- PAVEMENT BREAKING
- PAVED SHLDR REMOVAL
- BRIDGE APPROACH REMOVAL
- GUADRIL REMOVAL
- PVMT MKR REFLECTOR TO BE REMOVED
-

NOTES:

- HMA SURFACE REMOVAL - BUTT JOINT AND TEMPORARY RAMP ARE NOT TO BE COMPLETED UNTIL SURFACE COURSE CONSTRUCTION IN STAGE 3.
- SAWCUT WILL NOT BE MEASURED SEPARATELY FOR PAYMENT BUT SHALL BE CONSIDERED IN THE APPLICABLE REMOVAL ITEM.



STATE OF ILLINOIS
DEPARTMENT OF TRANSPORTATION

REMOVAL PLAN

WILLS BURKE KELSEY ASSOCIATES LTD.
116 West Main Street, Suite 201
St. Charles, Illinois 60174
(630) 443-7755

USER NAME = #USER#	DESIGNED -	REVISED -
PLOT SCALE =	DRAWN -	REVISED -
PLOT DATE = 8/2/2010	CHECKED -	REVISED -
	DATE - 8/6/10	REVISED -

F.A. RTE.	SECTION	COUNTY	TOTAL SHEETS	SHEET NO.
646	BBR-1	WHITESIDE	90	22
CONTRACT NO. 84854				
FED. ROAD DIST. NO. 2 ILLINOIS FED. AID PROJECT				

FILE NAME = P:\CBBEL WEST Proj\p02\2009\12\21\006_M01_IL_40\Civil\Drawings\84854-ah-tr-rem2-1.dgn