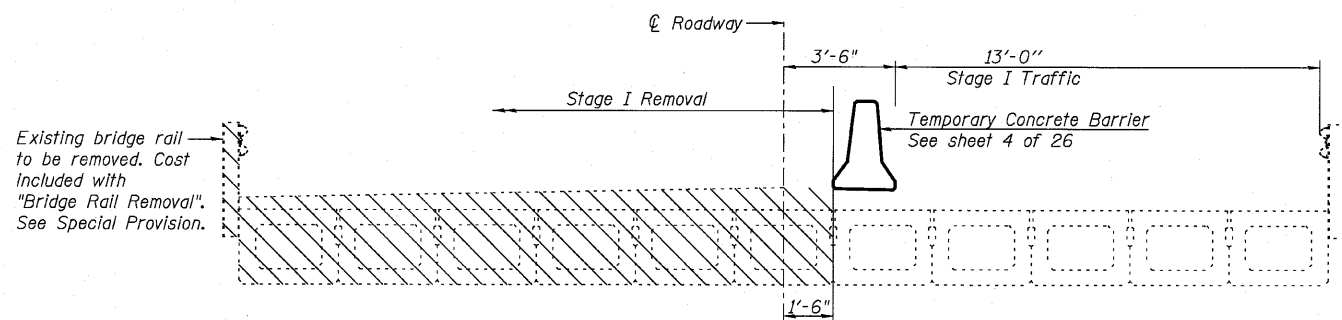
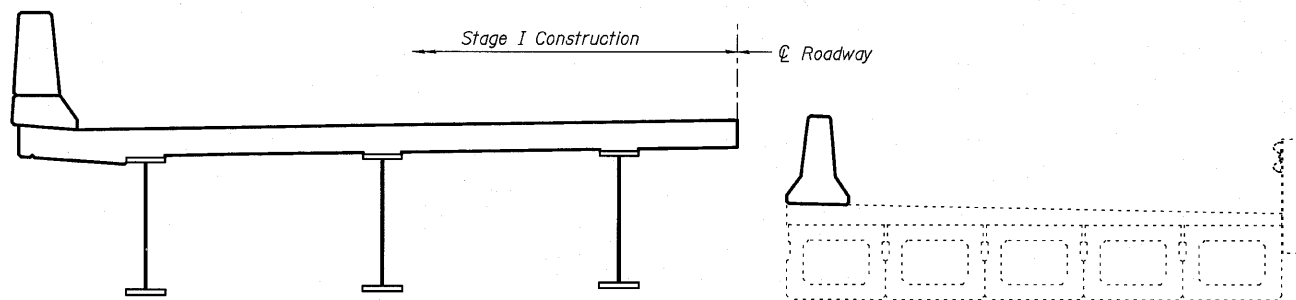


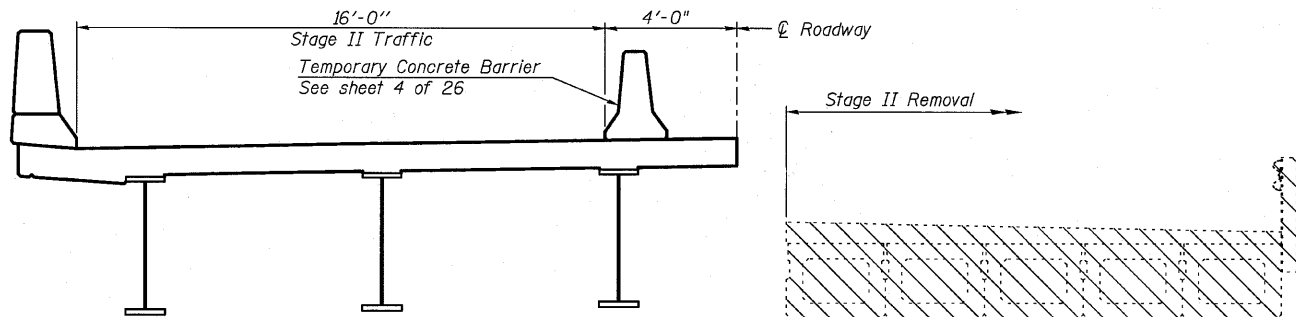
STATE OF ILLINOIS  
DEPARTMENT OF TRANSPORTATION



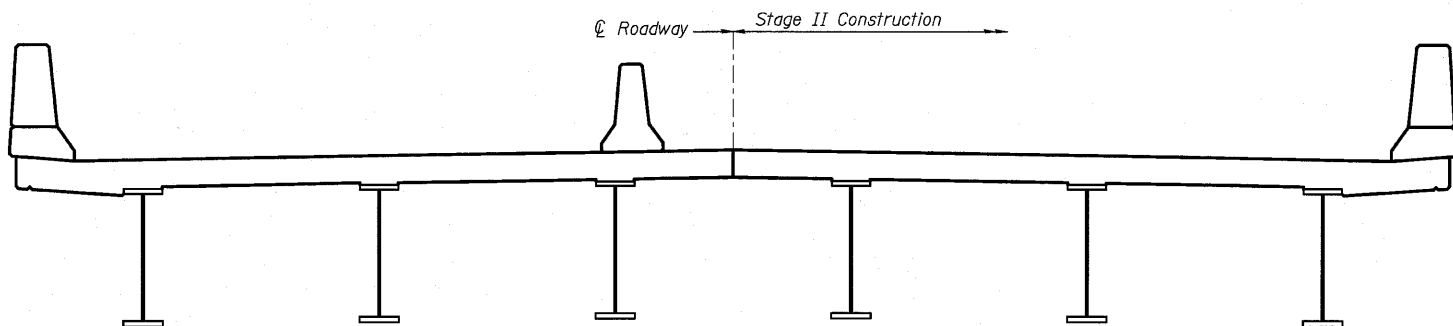
**STAGE I REMOVAL & TRAFFIC**



**STAGE I CONSTRUCTION**

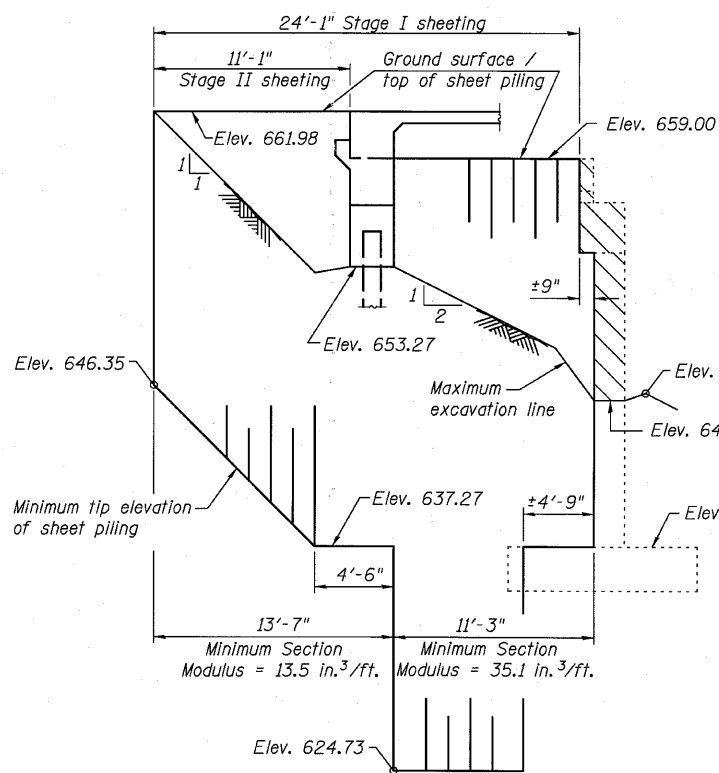


**STAGE II REMOVAL & TRAFFIC**



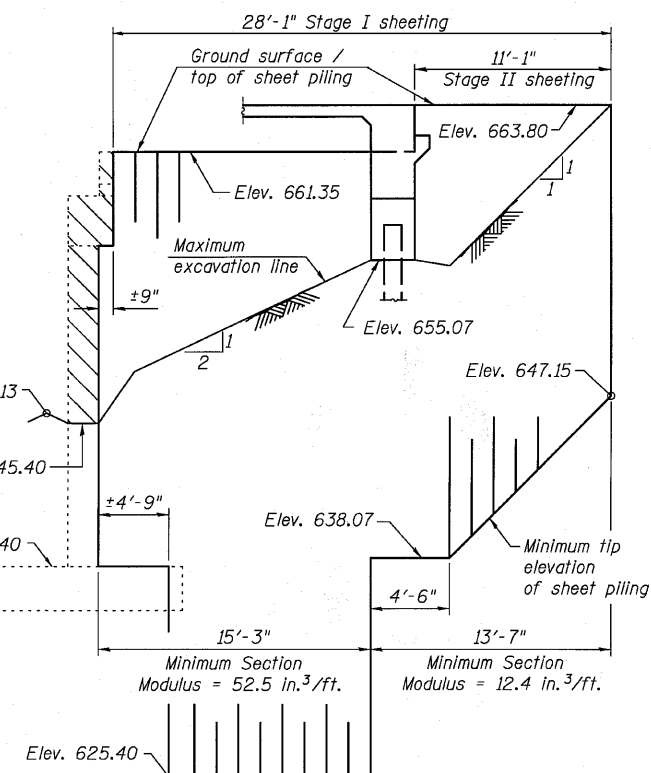
**STAGE II CONSTRUCTION**

DESIGNED -	AEU
CHECKED -	MH/DLS
DRAWN -	AWH
CHECKED -	AEU



**TEMPORARY SHEET PILING AT SOUTH ABUT.**

Dimensions measured along Stage Construction Line



**TEMPORARY SHEET PILING AT NORTH ABUT.**

Dimensions measured along Stage Construction Line

- Notes:
- All staging cross sections are looking North.
  - For quantity of Temporary Concrete Barrier, see roadway plans.
  - If the Contractor chooses to alter the temporary cantilevered sheet piling design requirements shown on the plans, a design submittal including plan details and calculations will be required for review and acceptance by the Engineer.
  - The Contractor shall connect the first sheet to the existing abutment wall to ensure stability of the sheets driven to the top of the existing footing. This connection shall be reviewed and accepted by the Engineer and included in the cost for Temporary Sheet Piling.
  - Hatched area indicates Removal of Existing Structures.
  - Plan dimensions and details relative to the existing structure have been taken from existing plans and are subject to nominal construction variations.
  - The location of the stage construction line shown applies to the superstructure and the abutments. The location of the stage construction line at the pier is shifted 8" to the West.

**STAGE CONSTRUCTION DETAILS  
STRUCTURE NO. 098-0117**

<b>WILLS BURKE KELSEY ASSOCIATES LTD.</b> 116 West Main Street, Suite 201 St. Charles, Illinois 60174 (630) 443-7755	SHEET NO. 3  26 SHEETS	F.A.P. RTE.	SECTION	COUNTY	TOTAL SHEETS	SHEET NO.
		646	8BR-1	WHITESIDE	90	37
CONTRACT NO. 84854						
ILLINOIS FED. AID PROJECT						