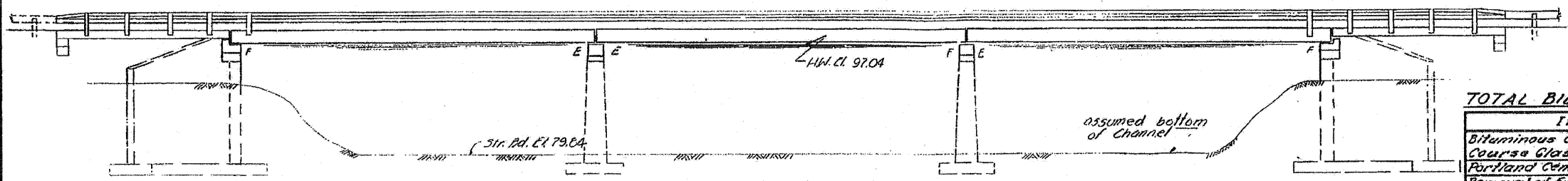


Existing Structure built as S.D.I. Rt. 40, Sec. 8B in 1923 @ Sta. 1375+23.67. 3 span R.C. Deck Girder 62'5" each span, 22' Rdwy., R.C. Piers and Closed Abuts. Deck to be removed by Contractor utilizing slope construction as shown and providing temporary guardrail.

STATE OF ILLINOIS
DEPARTMENT OF TRANSPORTATION

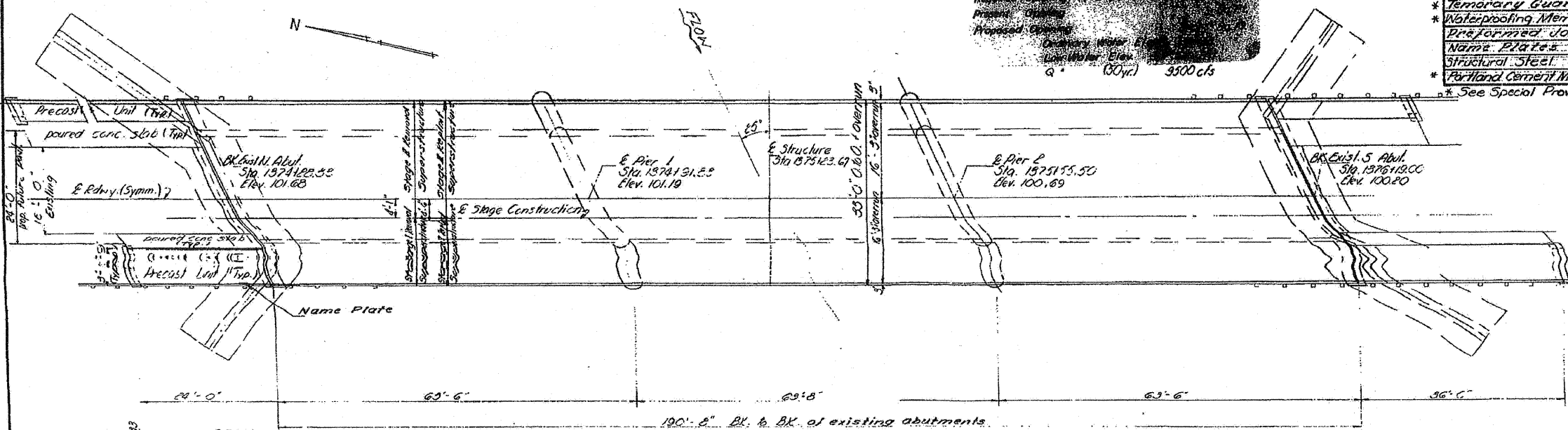
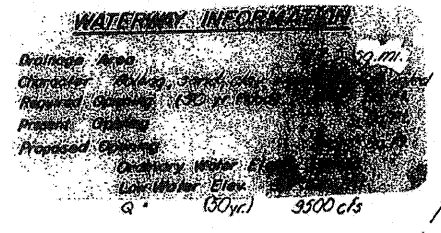
ROUTE NO.	SECTION	COUNTY	TOTAL SHEETS	SHEET NO.
PA 40	BBR	WHITESIDE	11	3
SHEET NO. 1 9 SHEETS				



ELEVATION

TOTAL BILL OF MATERIAL

Item	Unit	Super	Sub	Total
Bituminous Concrete Surface Course Class 1	Tons	80		80
Portland Cem. Conc. Pav't (10')	Sq. Yds	50		50
Removal of Exstg Superstructure	Each			1
Pavement Fabric	Sq. Yds	50		50
Concrete Removal	Cu. Yds		21	21
Expansion Bolts 3/4" dia	Ea.	76	156	232
Class X Concrete	Cu. Yds	5.1	47.9	53.0
Precast Concrete Bridge Slab	Sq. Ft.	450		450
Precast Prestressed Concrete Deck Beams (C7)	Sq. Ft.	6278		6278
Steel Railing Type IV	Lin. Ft.	502		502
Reinforcement Bars	Lbs	470	6560	7030
Pavement Removal - R.C.C. Replacement Type C (10')	Sq. Yds	9		9
* Temporary Guardrail	Lin. Ft.	190		190
* Waterproofing Membrane System	Sq. Yds	706		706
* Prefabricated Joint Seals (A)	Lin. Ft.	73		73
Name Plates	Ea.	1		1
Structural Steel	Lbs	7100		7100
* Portland Cement Mortar Furring Course	Lin. Ft.	1903		1903



GENERAL NOTES

All reinforcement bars shall be lapped 24 dia unless otherwise shown. It shall be the responsibility of the Contractor to verify all dimensions and conditions existing in the field prior to construction and ordering materials.

Limits of Waterproofing Membrane System shall be back to back of new abutments and out to end of deck beams. Expansion bolts shall consist of self-drilling expansion anchors and 1/2" x 12" hooked bolts.

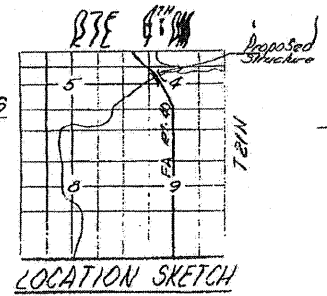
All Structural steel shall be shop painted with two coats of basic lead silico chromate paint.

Expansion guards which are not cast in the precast unit shall be fabricated and erected in accordance with Article 503.07 (c) of the Standard Specifications and are included in quantity of structural steel.

The top surface of the beams shall be finished in accordance with Article 505.06 of the Standard Specifications except that the surface shall not be roughened by grinding.

The finished surface shall be free of depressions or high spots with sharp corners.

GENERAL PLAN & ELEVATION
FA RT. 40 OVER ELKHORN CREEK
FA RT. 40 SEC. 8BR
WHITESIDE COUNTY
STATION 1375+23.67



LOCATION SKETCH

STATION 1375+23.67
STATE OF ILLINOIS
FA PROJECT RF-109(9)
LOADING HS-20

NAME PLATE
(See Sid. 2113)

PRECAST PRESTRESSED UNITS
f_c = 5000 psi
f_{ci} = 4000 psi
f'_s = 270,000 psi
f_{si} = 188,700 psi

FIELD UNITS
f_c = 1400 psi Super
f_c = 1000 psi Sub
V_c = 75 psi Footing
f_s = 20,000 psi Reinf.
n = 8

PRECAST UNITS
f_c = 4500 psi
f_c = 1000 psi
f_s = 20,000 psi
n = 8

NEW CONSTR LOADING HS 20-44

DESIGNED	Charles P. Brown	EXAMINED	[Signature]
CHECKED	Shen, Taita	PASSED	[Signature]
DRAWN	CG	APPROVED	[Signature]
CHECKED	ST		

FILE NAME = P:\CBBEL\WEST Projects\2207N\24102_W05_IL48\Civil\Open\Shen\BBR\854-ent-mac.dgn

WILLS BURKE KELSEY ASSOCIATES LTD.
116 West Main Street, Suite 201
St. Charles, Illinois 60174
(630) 443-7755

USER NAME = #USER#	DESIGNED -	REVISED -
PLOT SCALE =	DRAWN -	REVISED -
PLOT DATE = 8/2/2010	CHECKED -	REVISED -
	DATE - 8/6/10	REVISED -

STATE OF ILLINOIS
DEPARTMENT OF TRANSPORTATION

EXISTING STRUCTURE PLANS
FOR REFERENCE ONLY

SCALE: SHEET NO. 61 OF 90 SHEETS STA. TO STA.

F.A.P. RTE.	SECTION	COUNTY	TOTAL SHEETS	SHEET NO.
646	BBR-1	WHITESIDE	90	61
CONTRACT NO. 84854				

EXISTING STRUCTURE PLANS - FOR REFERENCE ONLY