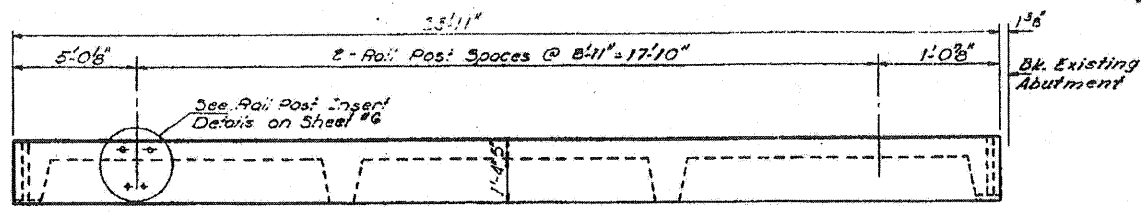
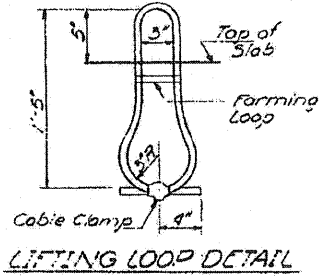


STATE OF ILLINOIS
DIVISION OF HIGHWAYS

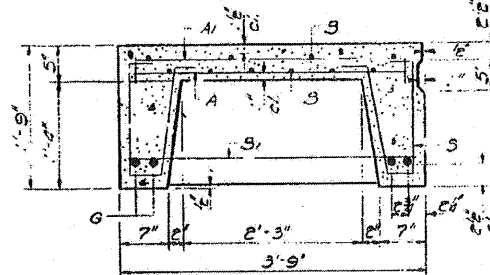
SHEET NO.		9 SHEETS	
SECTION	COUNTY	TOTAL SHEETS	SHEET NO.
BBR	WHITESIDE	11	6
F.A.P. RT. 49		SEC. 8-BR	
STATION 1375+33.67		CONTRACT NO. 84854	



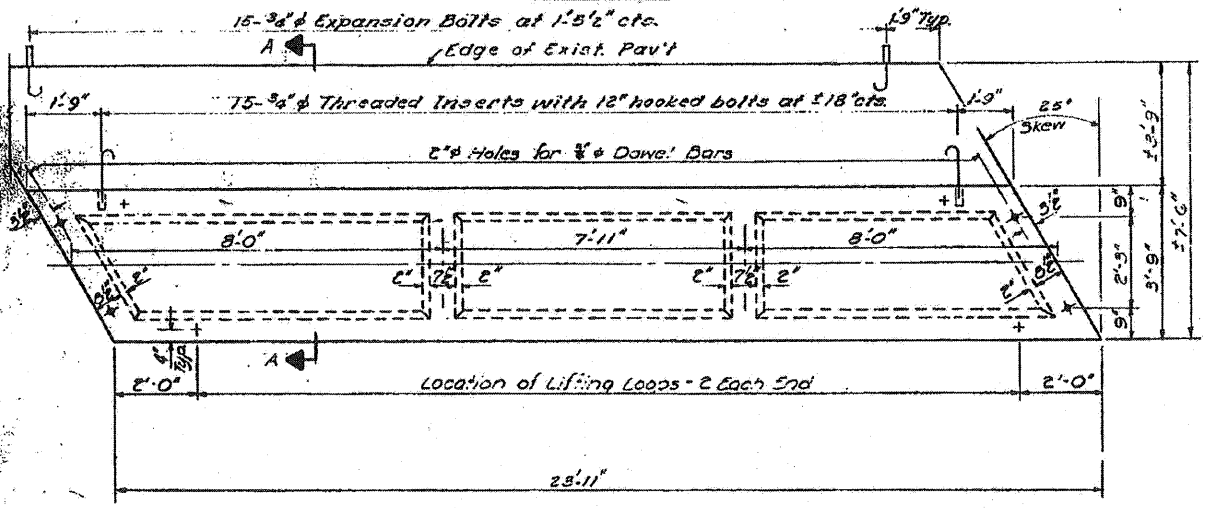
ELEVATION



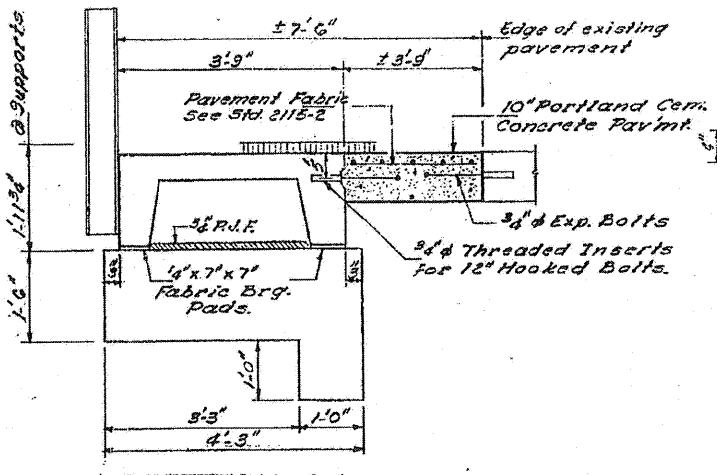
LIFTING LOOP DETAIL



SECTION THRU PRECAST UNIT



PLAN

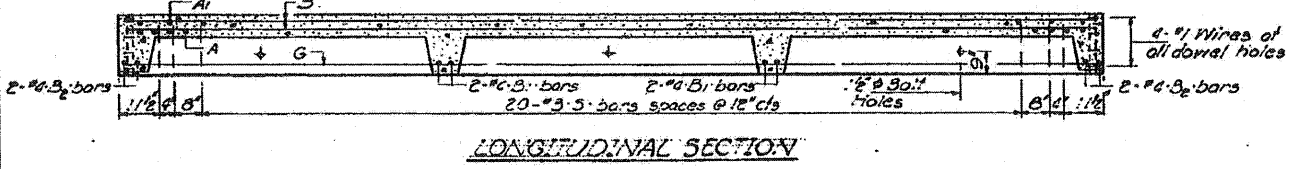
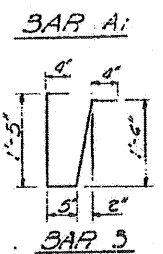


SECTION A-A

BAR LIST - ONE UNIT

Reinforcement to be cast into slab

Bar	No	Size	Length	Shape
A	23	#4	3'-3"	U
A1	33	#4	6'-0"	U
B	10	#4	23'-6"	U
B1	C	#4	3'-6"	U
B2	C	#4	3'-10"	U
G	C	#10	23'-6"	U
S	50	#3	3'-0"	U

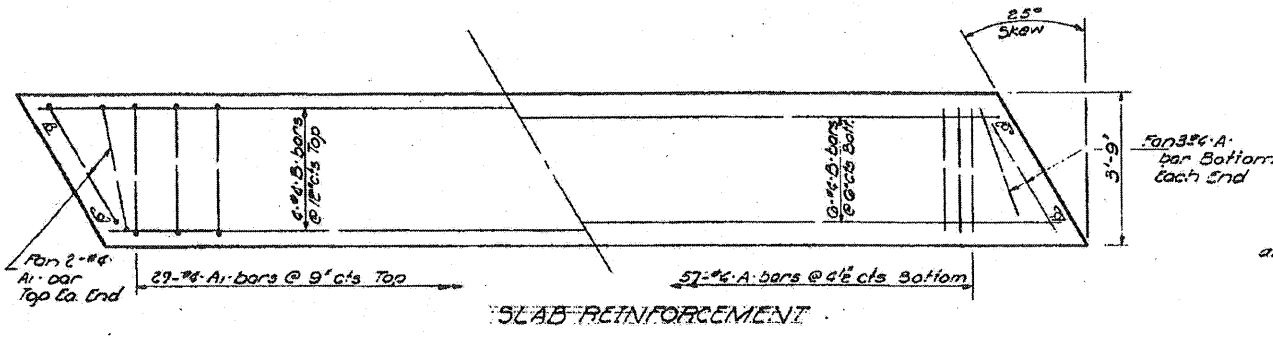


LONGITUDINAL SECTION

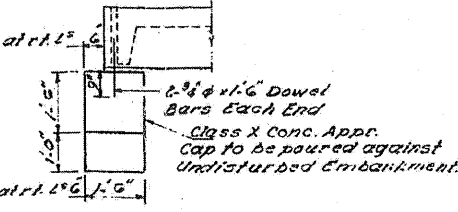
NOTES
Unless otherwise approved by the Engineer, lifting loops shall be 6x25 class wire rope with 7-bar core and shall have a minimum ultimate strength of 21,000 lbs. Loops shall be burned off after slab has been erected. Holes shall be drilled and anchor dowels grouted in place.
Cost of reinforcement and accessories cast into the slab unit, bearing pads, furnishing, drilling for, placing & grouting anchor dowels and 3/4" hooked bolts is included in Unit bid price for "Precast Concrete Bridge Slab."
The Precast Concrete Bridge Slab shall be erected and aligned with the exterior face of the exterior Deck Beam after Deck Beams are in final position.

TWO 24' PRECAST CONC. SLABS
BILL OF MATERIAL

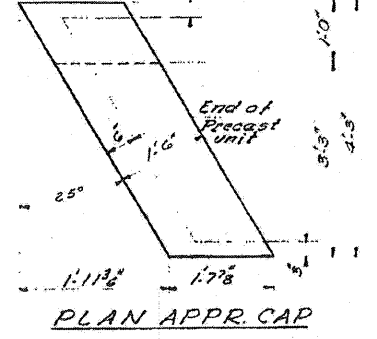
Item	Unit	Qty
Precast Concrete Bridge Slab	Sq. Ft.	180
Portland Cement Conc. Pavement (10")	Sq. Ft.	20
Pavement Fabric	Sq. Ft.	20
Expansion Bolts (3/4")	Each	30
Class X Concrete	Sq. Ft.	0.9



SLAB REINFORCEMENT



SECTION AT APPR. CAP



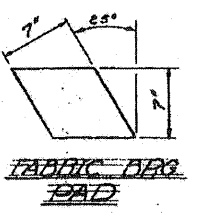
PLAN APPR. CAP

APPROACH DETAIL
F.A.P. RT. 49 SEC. 8-BR
WHITESIDE COUNTY
STATION 1375+33.67

DESIGNED: *Chack O'Brien*
CHECKED: *Shen T. A. F. A.*
DRAWN: *J. K. R. S. K.*
CHECKED: *S.T.*

EXAMINED: *[Signature]*
PASSED: *[Signature]*
APPROVED: *[Signature]*

DATE: April 9 1971



FABRIC BRG. PAD

STRESSES
f_c = 4,500 psi
f_c = 1800 psi
f_s = 20,000 psi
n = 8
LOADING H-3-20

FILE NAME = PACBBEL WEST Projects\2009\124106.WPS_IL_48\CVI\09\SH\A\20090404-ah.tmacad.dgn

WILLS BURKE KELSEY ASSOCIATES LTD.
118 West Main Street, Suite 201
St. Charles, Illinois 60174
(630) 443-7755

USER NAME = #USER#	DESIGNED -	REVISED -
PLOT SCALE =	DRAWN -	REVISED -
PLOT DATE = 8/2/2010	CHECKED -	REVISED -
	DATE - 8/6/10	REVISED -

STATE OF ILLINOIS
DEPARTMENT OF TRANSPORTATION

EXISTING STRUCTURE PLANS
FOR REFERENCE ONLY
SCALE: SHEET NO. 64 OF 90 SHEETS STA. TO STA.

F.A.P. NO.	SECTION	COUNTY	TOTAL SHEETS	SHEET NO.
646	BBR-1	WHITESIDE	90	64
CONTRACT NO. 84854				
FED. ROAD DIST. NO. 2 ILLINOIS FED. AID PROJECT				

EXISTING STRUCTURE PLANS - FOR REFERENCE ONLY