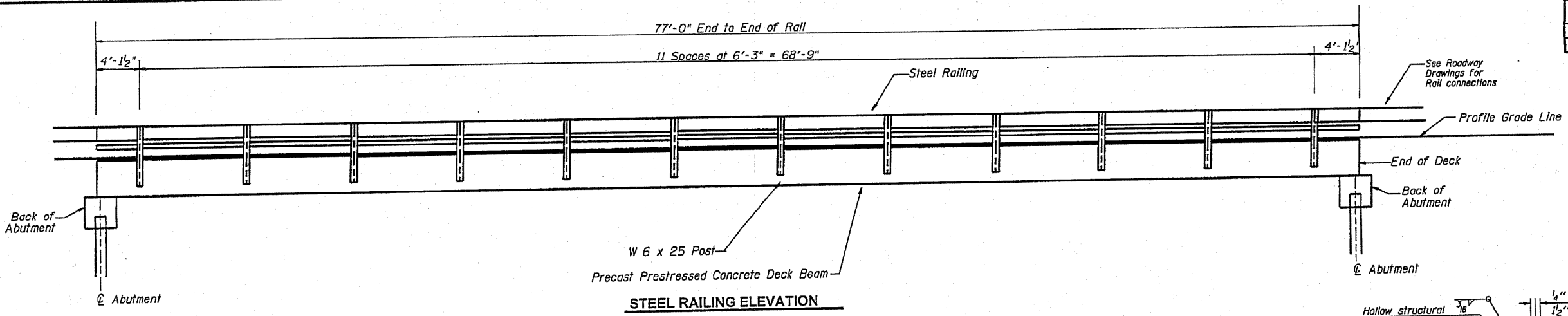
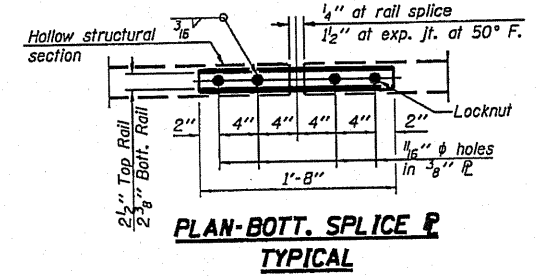


ROUTE NO.	SECTION	COUNTY	TOTAL SHEETS	SHEET NO.
C.H. 5	10-00150-00-BR	HENRY	6	6
STA.	TO STA.			
F.H.W.A. REG.	ILLINOIS PROJECT			

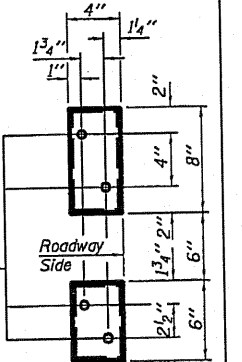


STEEL RAILING ELEVATION

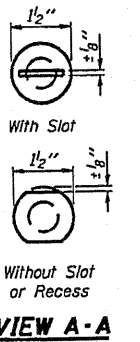


PLAN-BOTT. SPLICE P TYPICAL

Ø 5/8" reduced base welded studs. Provide 4 - 5/8" washers and self-locking nuts or nuts and jam nuts for guardrail connection shown on Std. 631032

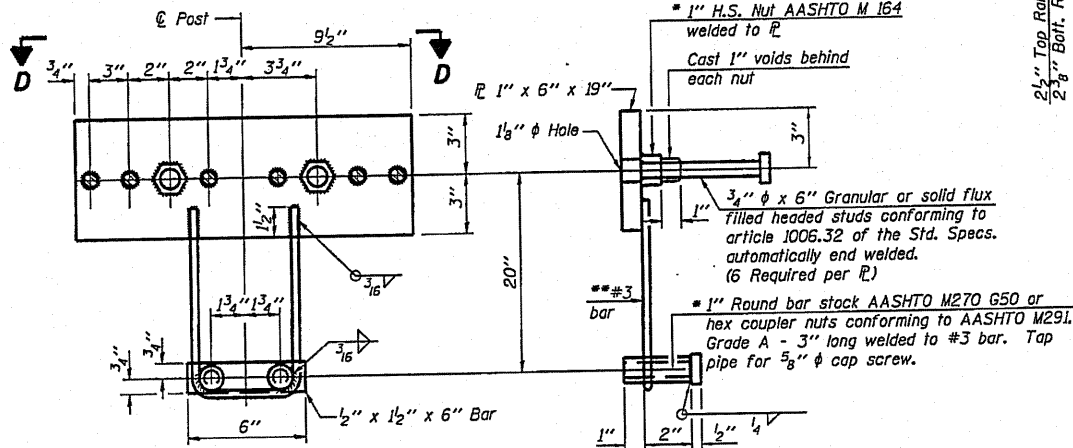


VIEW E-E



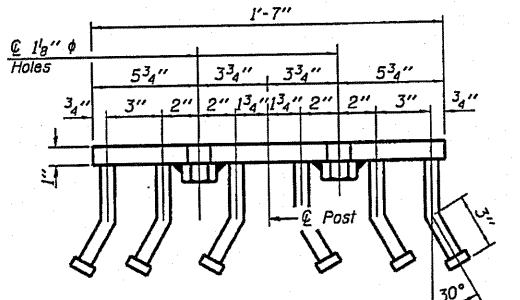
DETAIL OF 3/4" Ø ROUND HEAD BOLT

VIEW A-A

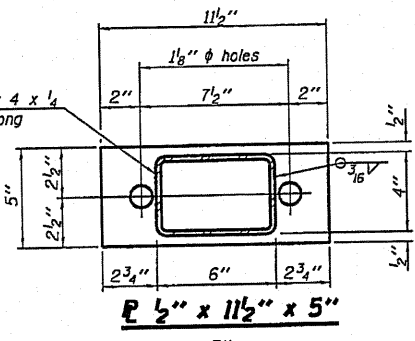


ANCHOR DEVICE

*Threaded areas shall be plugged or blocked off during casting of beam. Galvanized after fabrication.

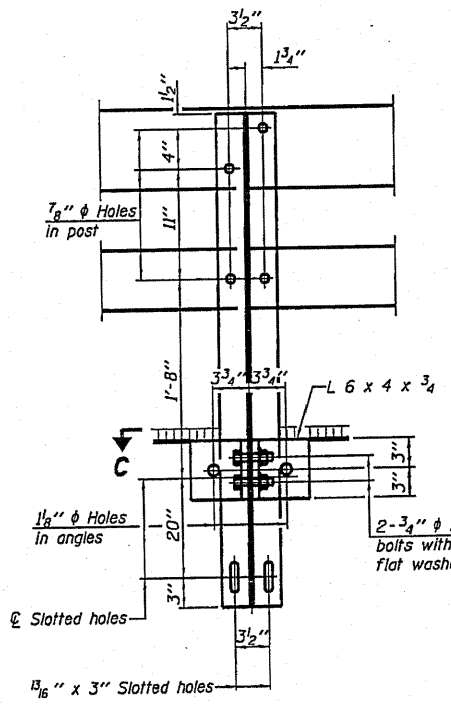


VIEW D-D

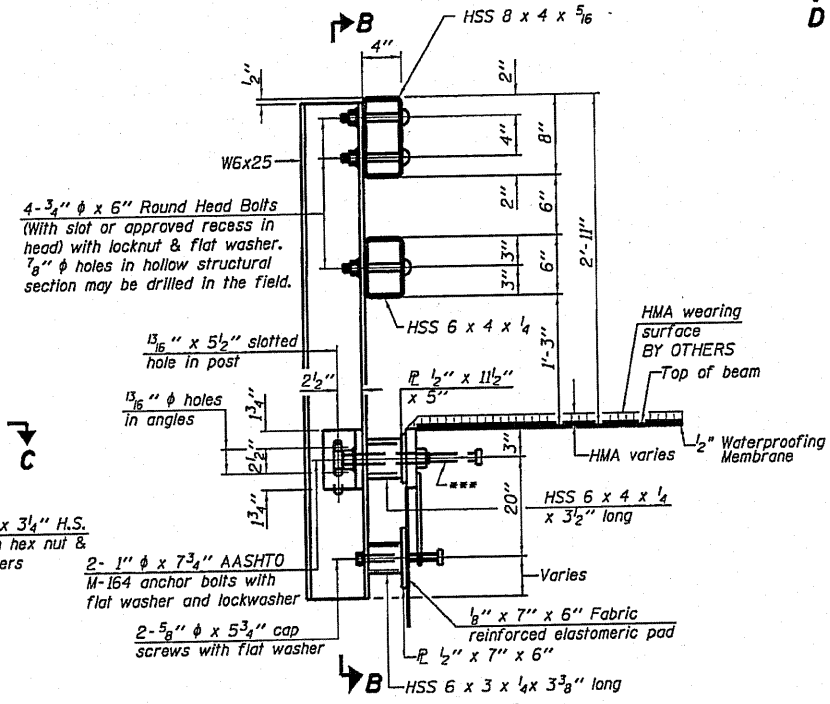


P 1/2" x 11 1/2" x 5"

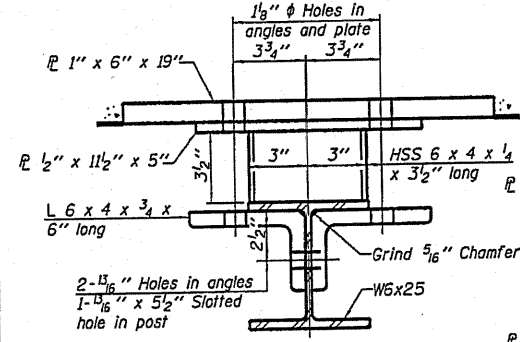
P 1/2" x 7" x 6"



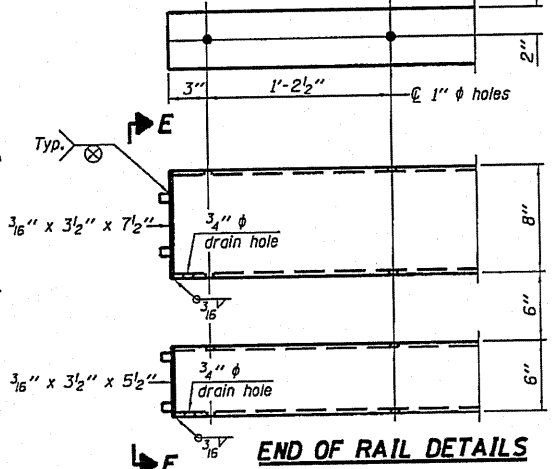
SECTION B-B



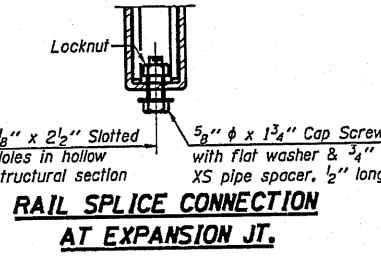
SECTION AT RAIL POST



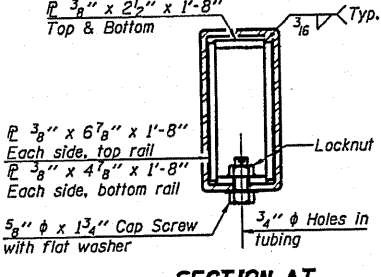
SECTION C-C



END OF RAIL DETAILS



RAIL SPLICE CONNECTION AT EXPANSION JT.



SECTION AT RAIL SPLICE

- Notes:
- All field drilled holes shall be coated with an approved zinc rich paint before erection.
 - For multi-span bridges, sufficient 1/4" x 6" x 1'-2" galvanized steel shims shall be provided to align rail between adjacent spans. Cost included with Steel Railing, Type SM.
 - All steel rail members shall be galvanized according to Article 509.05 of the Standard Specifications.
 - The studs of the anchor devices shall be placed below the top reinforcement bars and the outermost longitudinal reinforcement bar shall be placed directly above the studs of the rail post anchor device.
 - Whenever the lower insert assemblies interfere with strand locations, the #3 bars shall be cut and adjusted in order to allow raising or lowering of the lower inserts. Maximum adjustment not to exceed 1/2".

BILL OF MATERIAL

Item	Unit	Quantity
Steel Railing, Type SM	Foot	154

STEEL RAILING, TYPE SM
SECTION: 10-00150-00-BR
HENRY COUNTY
STATION 73+27