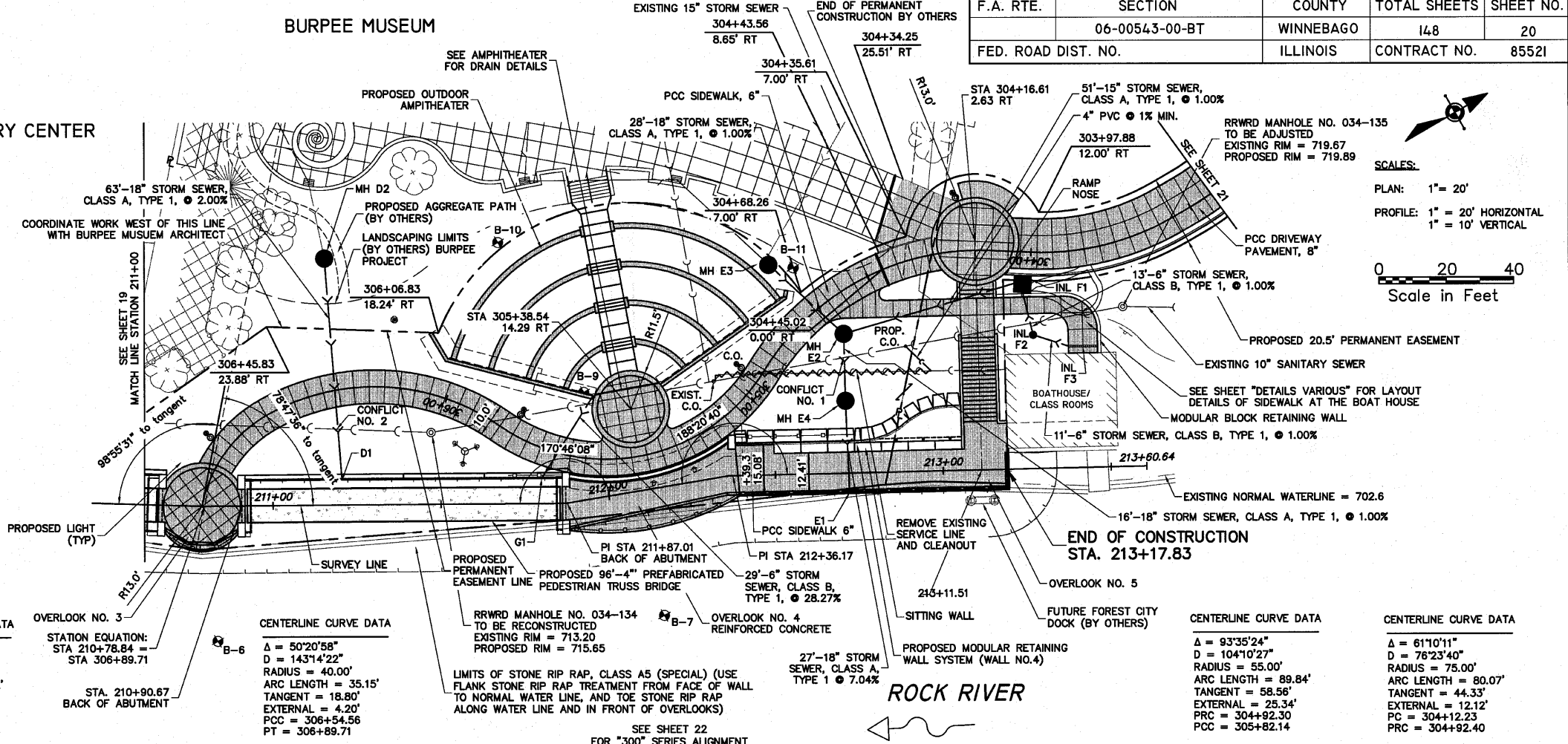


BURPEE MUSEUM

DISCOVERY CENTER



*** END OF PIPE D1**
18" PIPE WALL OPENING
211+20.6, 7.5' LT
IE = 709.79

INL F1
INLET SPECIAL No.2
304+02.3, 7.0' LT
EP = 721.98 TC 722.38
IE = 716.30 (E) IN
IE = 716.18 OUT

MH D2
RESTRICTED DEPTH
MANHOLE, 4' DIA. WITH
TYPE 1 F&G
306+30.9, 32.9' RT
RIM = 719.53
IE = 713.64 (W) IN
IE = 711.05 (E) OUT

*** END OF PIPE E1**
18" PIPE WALL OPENING
212+72.0, 5.8' LT
IE = 702.15

MH E2
MANHOLE TYPE A, 4' DIA.
TYPE 1 F&G CLOSED LID
304+66.3, 10.7' RT
RIM = 720.25
IE = 715.67 (N) IN
IE = 711.79 (SW) IN
IE = 711.69 (E) OUT

EX MH E3
EXISTING V.I.F.
MANHOLE TYPE A, 4' DIA.
TYPE 1 F&G CLOSED LID
304+70.0, 19.5' RT
RIM = 721.47 (EX)
IE = 715.42 (EX 15"SW) IN
IE = 712.13 (EX 15" W) IN
IE = 712.07 (E) OUT
(NEW CONNECTION)
IE (EX 15") = 712.03
(PLUG)

MH E4
MANHOLE TYPE A, 4' DIA.
212+71.4, 21.6' LT.
TYPE 1 F&G
RIM = 718.10
IE = 711.53 (W) IN
IE = 704.05 (E) OUT

INL F2
INLET TYPE A, WITH
TYPE 8 GRATE
303+98.8, 24.6' LT
RIM = 718.23
IE = 716.53 IN
IE = 716.43 OUT

INL F3
TRENCH DRAIN
MODEL-AGO DRAIN
KOSO-OUTLET 6
GRATE-SLOTTED COMP.
RIM = 719.15
IE = 716.50

*** END OF PIPE G1**
6" PIPE WALL OPENING
211+79.9, 7.5' LT
IE = 706.00

*** ANTI-SEEP COLLAR REQUIRED**

CONFLICT NO. 1
BOT STM = 711.43
TOP SAN = 708.92
SAN INV = 708.10

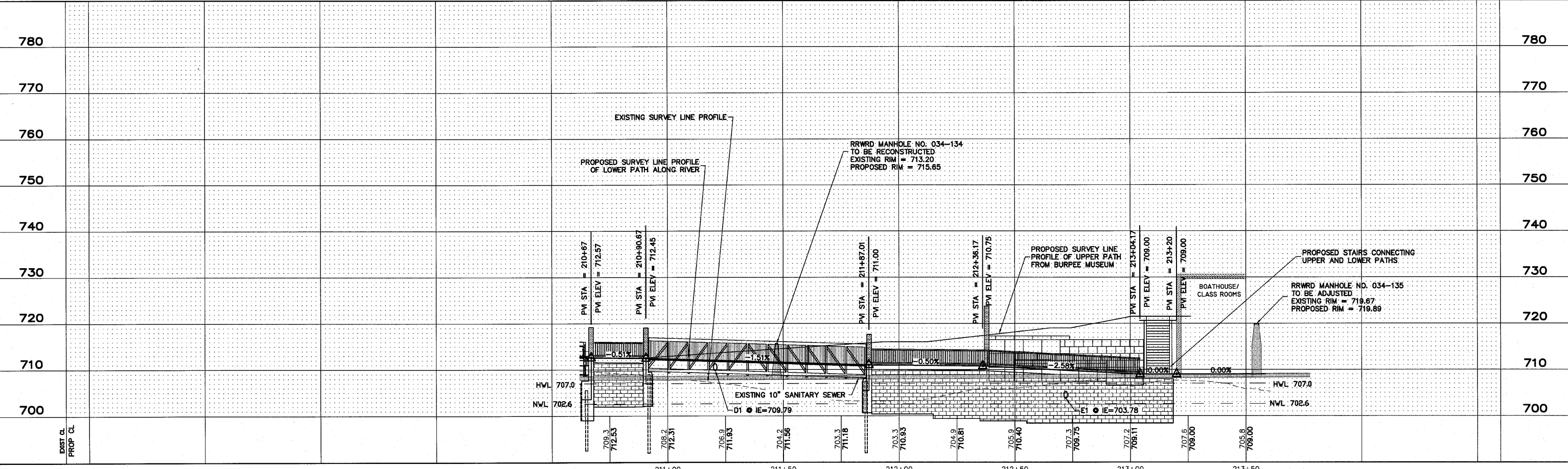
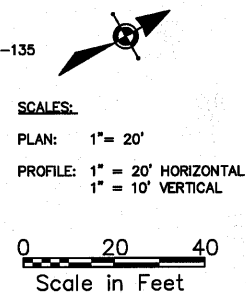
CONFLICT NO. 2
BOT STM = 710.10
TOP SAN = 708.63
SAN INV = 707.80

CENTERLINE CURVE DATA
Δ = 63°49'59"
D = 88°08'50"
RADIUS = 65.00'
ARC LENGTH = 72.42'
TANGENT = 40.48'
EXTERNAL = 11.58'
PC = 305+82.14
PCC = 306+54.56

CENTERLINE CURVE DATA
Δ = 50°20'58"
D = 143°14'22"
RADIUS = 40.00'
ARC LENGTH = 35.15'
TANGENT = 18.80'
EXTERNAL = 4.20'
PCC = 306+54.56
PT = 306+89.71

CENTERLINE CURVE DATA
Δ = 93°35'24"
D = 104°10'27"
RADIUS = 55.00'
ARC LENGTH = 89.84'
TANGENT = 58.56'
EXTERNAL = 25.34'
PC = 304+92.30
PCC = 305+82.14

CENTERLINE CURVE DATA
Δ = 61°10'11"
D = 76°23'40"
RADIUS = 75.00'
ARC LENGTH = 80.07'
TANGENT = 44.33'
EXTERNAL = 12.12'
PC = 304+12.23
PCC = 304+92.40



<p>SHEET REVIEW</p> <table border="1"> <tr> <th>AGENCY</th> <th>DATE</th> </tr> <tr> <td> </td> <td> </td> </tr> </table>		AGENCY	DATE			<p>REVISIONS</p> <table border="1"> <tr> <th>NO.</th> <th>ITEM</th> <th>DATE</th> </tr> <tr> <td> </td> <td> </td> <td> </td> </tr> </table>		NO.	ITEM	DATE				<p>SCALE: Hor. 1"=20' Ver. 1"=5'</p> <p>DRAWN BY: MS</p> <p>CHECKED BY: JMH</p> <p>DATE: AUGUST 13, 2010</p>		<p>McClure Engineering Associates, Inc.</p> <p>7282 Argus Drive Rockford, Illinois 61107-5837 (615) 398-2332 FAX (615) 398-2496 Design Firm License: Illinois 184-000816 Copyright 2010 By McClure Engineering Associates, Inc.</p>		<p>PLAN & PROFILE - 211+00 TO END RIVERWALK MUSEUM CAMPUS</p> <p>711 NORTH MAIN STREET ROCKFORD, IL</p> <p>FILE:H:\08-008 RIVERWALK MUSEUM\DESIGN\DRAWINGS\08-008 PP 211+00 TO END.DWG JOB:04-28-10-008</p>		<p>SHEET NO. 20 OF 148</p>
AGENCY	DATE																			
NO.	ITEM	DATE																		