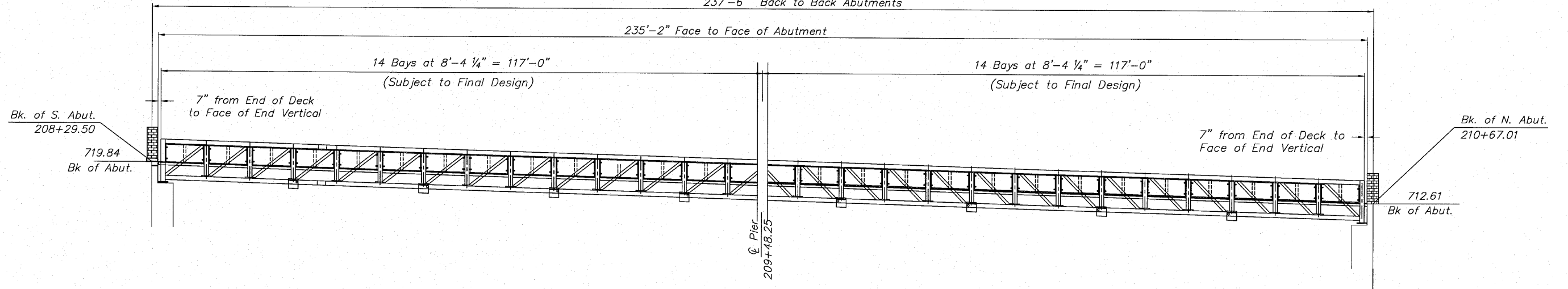
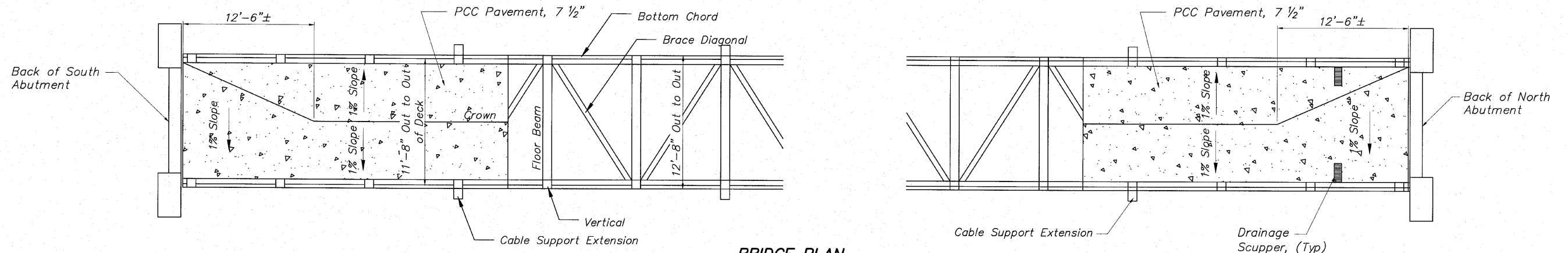


STATE OF ILLINOIS
DEPARTMENT OF TRANSPORTATION

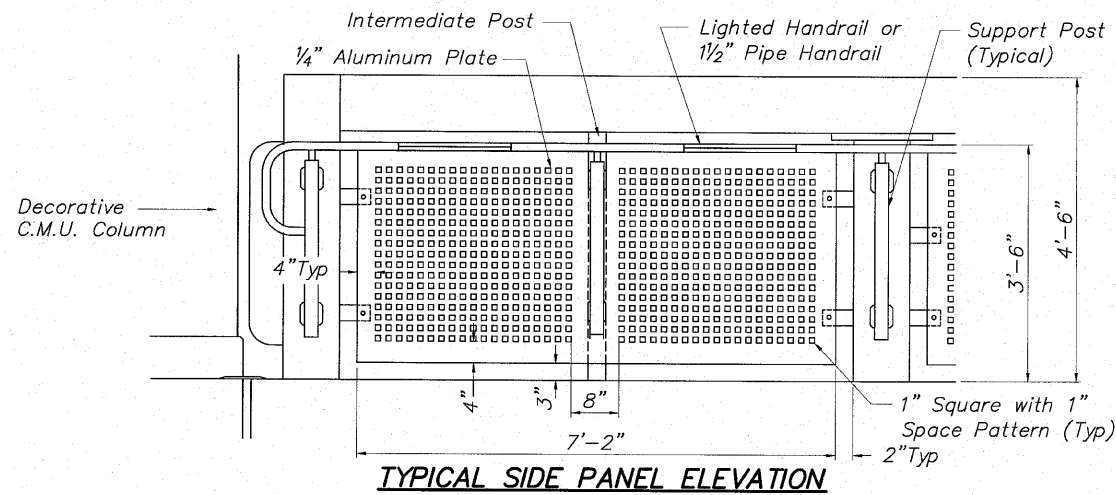
237'-6" Back to Back Abutments



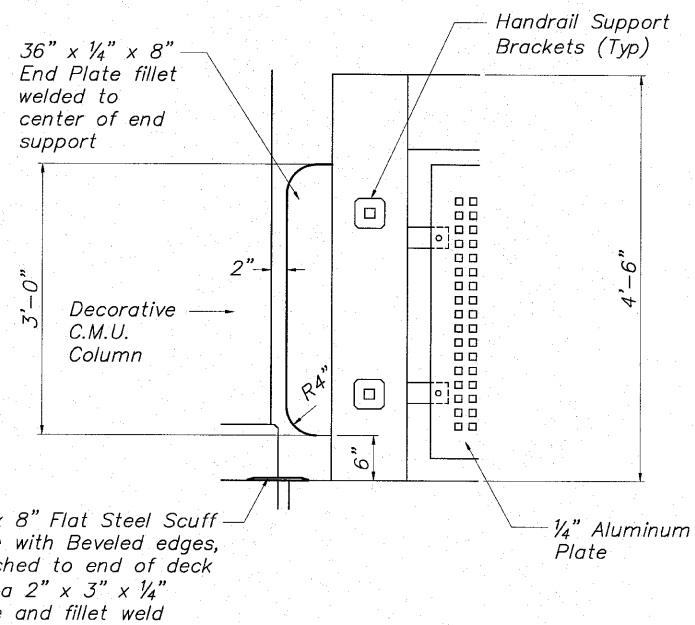
BRIDGE ELEVATION



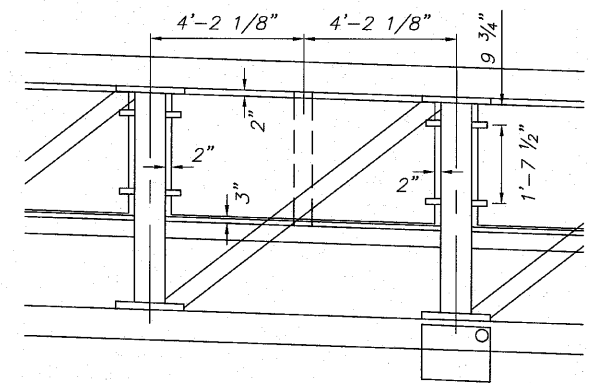
BRIDGE PLAN



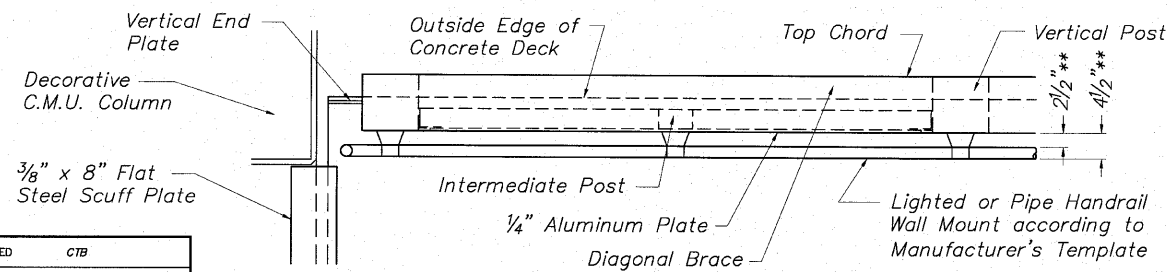
TYPICAL SIDE PANEL ELEVATION



DETAIL OF SCUFF PLATE & END VERTICAL PLATE



TYPICAL PANEL MOUNTING DETAIL



TYPICAL SIDE PANEL PLAN

** Verify with Manufacturer

DESIGNED	CTB
CHECKED	AAG
DRAWN	JAW
PEER REVIEWED	

**SUPERSTRUCTURE DETAILS
CABLE-STAYED PEDESTRIAN BRIDGE
PEDESTRIAN RIVERWALK
ALONG THE ROCK RIVER
WINNEBAGO COUNTY
SECTION NO. 06-00543-00-BT
STATION 209+48.25
STRUCTURE NO. 101-6350**

McClure
Engineering Associates, Inc.
7282 Argus Drive
Rockford, Illinois 61107-5837
(815) 398-2332 Fax (815) 398-2498
Design Firm License: Illinois #184-000816
Copyright 2010 By McClure Engineering Associates, Inc.

SHEET NO. 4
II SHEETS

F.A. RTE.	SECTION	COUNTY	TOTAL SHEETS	SHEET NO.
	06-00543-00-BT	WINNEBAGO	148	59
FED. ROAD DIST. NO.	ILLINOIS	CONTRACT NO.	85521	
		FED. AID PROJECT		