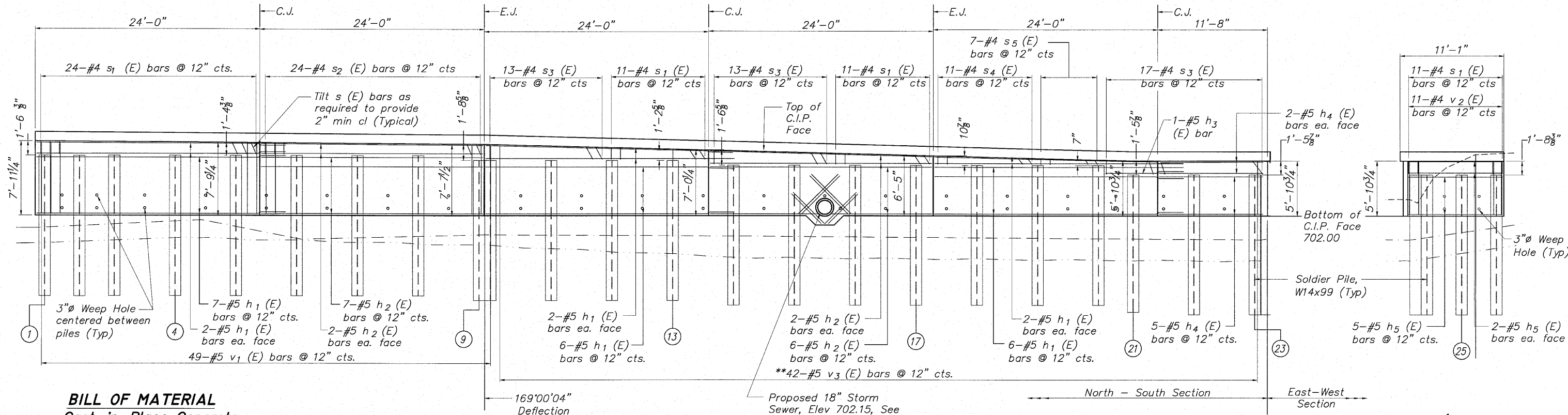


STATE OF ILLINOIS  
DEPARTMENT OF TRANSPORTATION



**BILL OF MATERIAL**  
**Cast-in-Place Concrete**

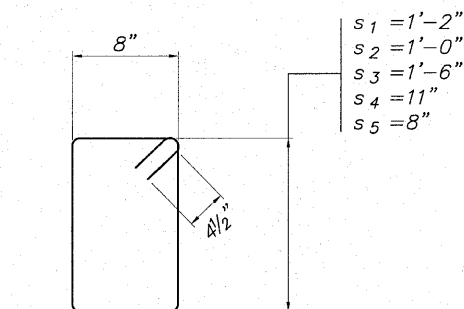
Bar	No.	Size	Length	Shape
h <sub>1</sub> (E)	31	#5	26'-5"	—
h <sub>2</sub> (E)	21	#5	23'-8"	—
h <sub>3</sub> (E)	1	#5	8'-3"	—
h <sub>4</sub> (E)	9	#5	11'-1"	—
h <sub>5</sub> (E)	9	#5	10'-1"	—
h <sub>6</sub> (E)	8	#5	6'-0"	—
h <sub>7</sub> (E)	10	#5	6'-6"	—
v <sub>1</sub> (E)	49	#5	7'-6"	—
v <sub>2</sub> (E)	11	#5	5'-8"	—
**v <sub>3</sub> (E)	42	#5	12'-11"	—
s <sub>1</sub> (E)	57	#4	4'-5"	□
s <sub>2</sub> (E)	24	#4	4'-1"	□
s <sub>3</sub> (E)	43	#4	5'-1"	□
s <sub>4</sub> (E)	11	#4	3'-11"	□
s <sub>5</sub> (E)	7	#4	3'-5"	□
Concrete Structures	Cu. Yd.		32.2	
Reinforcement Bars (Epoxy Coated)	Pound		3,135	
Form Liner Textured Surface	Sq. Ft.		973	

\*\*Order bars full length, field cut bars and use remaining bars at opposite end.

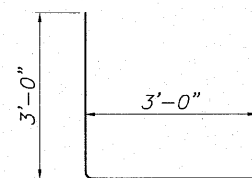
**ELEVATION (Showing C.I.P. Facing Reinforcement)**  
**North-South Section**  
(Looking @ Front Face of Wall)

**MINIMUM BAR LAP**

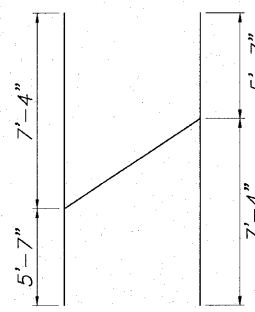
- No. 4 bars 1'-8"
- No. 5 bars 2'-2"
- No. 6 bars 2'-7"



**BAR s (E)**



**BAR h<sub>7</sub> (E)**

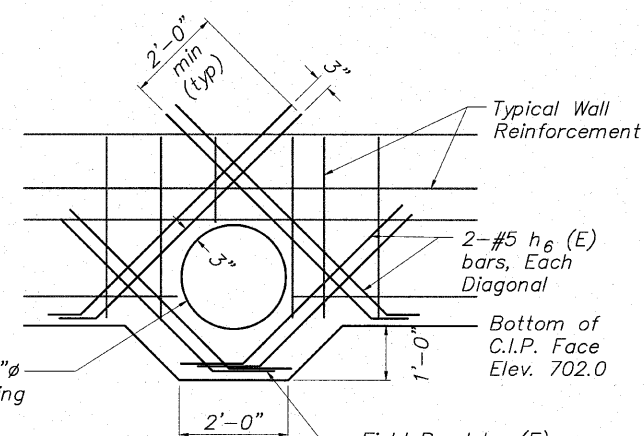


**BAR v<sub>3</sub> CUT DIAGRAM**

\*\*Order bars full length, field cut bars and use remaining bars at opposite end.

**ELEVATION (Showing C.I.P. Facing Reinforcement)**  
**East-West Section**  
(Looking @ Front Face of Wall)

BORING NUMBER	STATION	OFFSET	GROUND ELEV.	EST. COMP. ROCK ELEV.
B-1	205+62	20.1' LT	728	N/A
B-2	206+69	44.3' LT	728	N/A
B-3	207+60	36.1' LT	728	701.5
B-4	208+20	43.1' RT	695	693.5
B-5	209+64	59.9' RT	693	691.0
B-6	210+83	40.15' RT	696	693.0
B-7	212+10	37.74' RT	696	694.5
B-8	213+71	34.17' RT	698	691.5
B-9	211+98	31.8' LT	716	706.0
B-10	211+67	77.9' LT	720	710.0
B-11	212+57	61.6' LT	721	705.0
B-12	211+12	200.5' LT	736	714.0
B-13	212+13	155.2' LT	730	709.0
B-14	209+57	39.5' LT	730	705.0
B-15	208+63	54.3' LT	730	700.0



Move horizontal and vertical wall reinforcement up to one half their bar spacing to miss wall opening

**WALL PENETRATION DETAIL**

**SP WALL No. 24 DETAILS**  
**CAST-IN-PLACE CONCRETE ELEVATION**  
**PEDESTRIAN RIVERWALK**  
**ALONG THE ROCK RIVER**  
**WINNEBAGO COUNTY**  
**SECTION NO. 06-00543-00-BT**  
**STATION 211+87.04 TO**  
**STATION 213+18.55**

DESIGNED	GTB
CHECKED	AAG
DRAWN	JAW
CHECKED	JWH

**McClure**  
Engineering Associates, Inc.  
7282 Arqua Drive  
(815) 398-2332  
Rockford, Illinois 61107-5837  
Fax (815) 398-2496  
Design Firm License: Illinois#184-000816  
Copyright 2009 By McClure Engineering Associates, Inc.

SHEET NO. 3  
7 SHEETS

F.A. RTE.	SECTION	COUNTY	TOTAL SHEETS	SHEET NO.
	06-00543-00-BT	WINNEBAGO	148	101
FED. ROAD DIST. NO.	ILLINOIS	FED. AID PROJECT	CONTRACT NO. 85521	