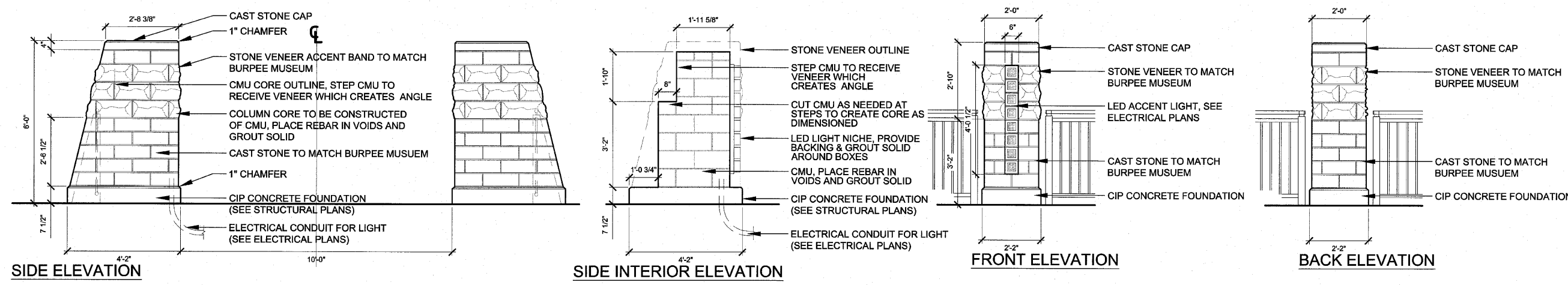


1 MASONRY COLUMN, LARGE
Scale: 1/2" = 1'-0"

- NOTES:**
- COLUMNS TO BE MIRROR IMAGE ON CENTERLINE OF BRIDGE.
 - CONTRACTOR TO SUBMIT SHOP DRAWINGS OF LARGE AND SMALL COLUMNS DEPICTING DIMENSIONS OF COLUMN ELEMENTS INCLUDING CAST STONE, STONE VENEER, INTERIOR CMU CORE WITH REBAR AND GROUT IN VOIDS TO BE USED AND LED ACCENT LIGHT.
 - CONTRACTOR TO SUBMIT SHOP DRAWINGS/CUT SHEETS AND SAMPLES OF CAST STONE, STONE VENEER, AND LED ACCENT LIGHT.
 - CMU REFERS TO CONCRETE MASONRY UNIT, SEE SPECIFICATIONS FOR MORE DETAIL.



2 MASONRY COLUMN, SMALL
Scale: 1/2" = 1'-0"