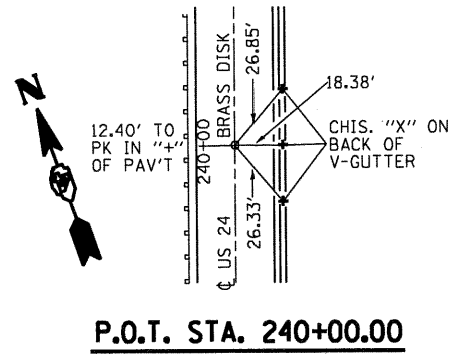
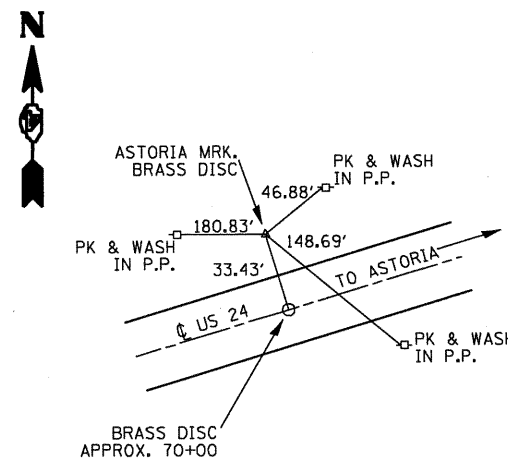


## BENCHMARKS



ELEVATION	NAME	DESCRIPTION
692.899	ASTORIA B.M.-	EXISTING BM DISK SET IN CONC. APPROX. 70+00 RT. (SEE SKETCH OF RECOVERY TIES BELOW)
682.658	T.B.M. #50-	SET CHIS. "□" ON TOP OF CONC. FOUNDATION, OF S.E. CHAIN LINK FENCE CORNER POST AROUND NATURAL GAS REG. STATION, S. SIDE OF US RT. 24, 54.5 FT.+/- S. OF PAVEMENT CENTERLINE, AT STA. 43+34+/-
686.289	T.B.M. #51-	SET CHIS. "□" ON TOP OF CONC. FOUNDATION, OF S.W. CHAIN LINK FENCE CORNER POST AROUND NATURAL GAS REG. STATION, S. SIDE OF (BROADWAY) US RT. 24, 70.5'+/- S. OF PAVEMENT CENTERLINE AT STA. 18+31+/-
679.009	B.M. #76-	CHIS. "X" ON SOUTH CAP BOLT OF FIRE HYDRANT IN S.W. QUAD OF U.S. 24 & 300E (OAK GROVE ROAD)
658.204	B.M. #77-	CHIS. "□" IN CENTER OF EAST HEADWALL FOR F.E. S. SIDE OF U.S. 24 W. SIDE OF 175E (DEAN RD.)
653.124	B.M. #78-	CHIS. "X" ON SOUTH CAP BOLT OF FIRE HYDRANT N. SIDE OF U.S. 24 E. OF TIMOTHY LN. (125E) ACROSS FROM STA. 200+00+/-
652.249	B.M. #79-	CHIS. "□" ON S.W. PARAPET WALL OF BRIDGE (S.N. 029-0007) OVER R.R. TRACKS @ U.S. 24 & TAYLOR LN. (080 E)

## TIES TO ASTORIA MRK



FILE NAME = miscellaneous.sheet.dgn	USER NAME = russellm	DESIGNED -	REVISED -	<b>STATE OF ILLINOIS DEPARTMENT OF TRANSPORTATION</b>	<b>ALIGNMENT SURVEY TIES AND BENCHMARKS</b>	F.A.P. RTE. 317	SECTION 15W-2,RS-3;16W-3,RS-5	COUNTY FULTON	TOTAL SHEETS 177	SHEET NO. 34
	PLOT SCALE = 100.0000' / IN.	CHECKED -	REVISED -		SCALE: SHEET NO. OF SHEETS STA. TO STA.	FED. ROAD DIST. NO. ILLINOIS FED. AID PROJECT		CONTRACT NO. 88098		
	PLOT DATE = 8/5/2010	DATE -	REVISED -							