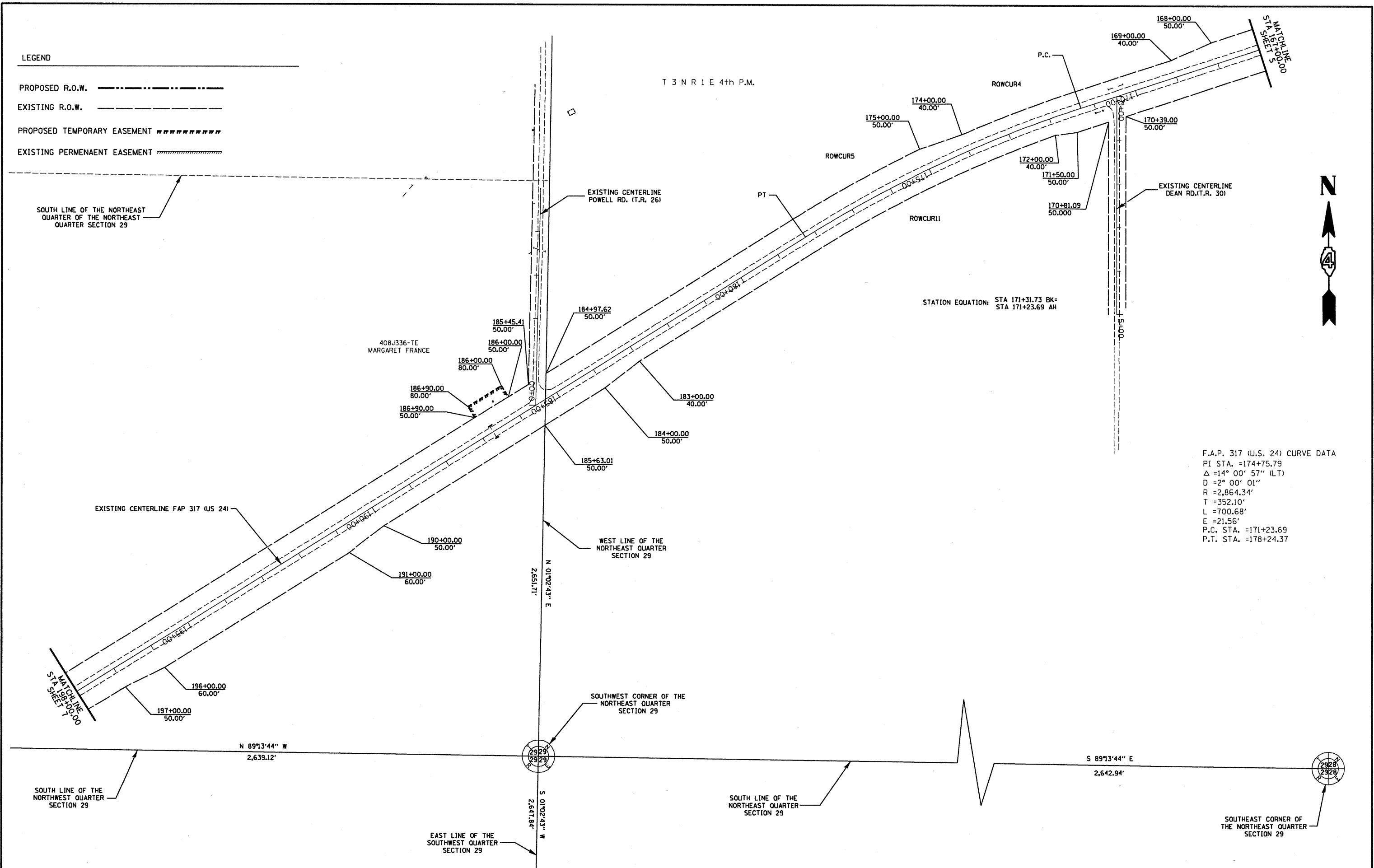


LEGEND

- PROPOSED R.O.W. ————
- EXISTING R.O.W. - - - - -
- PROPOSED TEMPORARY EASEMENT ~~~~~~
- EXISTING PERMANENT EASEMENT //////////////



STATION EQUATION: STA 171+31.73 BK= STA 171+23.69 AH

F.A.P. 317 (U.S. 24) CURVE DATA
 PI STA. =174+75.79
 Δ =14° 00' 57" (LT)
 D =2° 00' 01"
 R =2,864.34'
 T =352.10'
 L =700.68'
 E =21.56'
 P.C. STA. =171+23.69
 P.T. STA. =178+24.37

FILE NAME
 JOBROW.GPK
 24WROW.JPF
 US24SW_OF_ASTORIA_TO_ASTORIA.M32

USER NAME = STICKELMAIER	DESIGNED - PCF	REVISED -
	DRAWN - RTS	REVISED -
PLOT SCALE = 1" = 100'	CHECKED - PCF	REVISED -
PLOT DATE = 05-26-2009	DATE - 5-26-2009	REVISED -

STATE OF ILLINOIS
 DEPARTMENT OF TRANSPORTATION

RIGHT OF WAY PLANS	
PROJECT 24.88098	JOB NO. R-94-008-93
SHEET NO. 6 OF 7 SHEETS	STA. TO STA.

F.A.P. RTE. 317	SECTION 15W-2, RS-3; 16W-3, RS-5	COUNTY FULTON	TOTAL SHEETS 171	SHEET NO. 88
CONTRACT NO. 88098				
FED. ROAD DIST. NO. ILLINOIS FED. AID PROJECT				