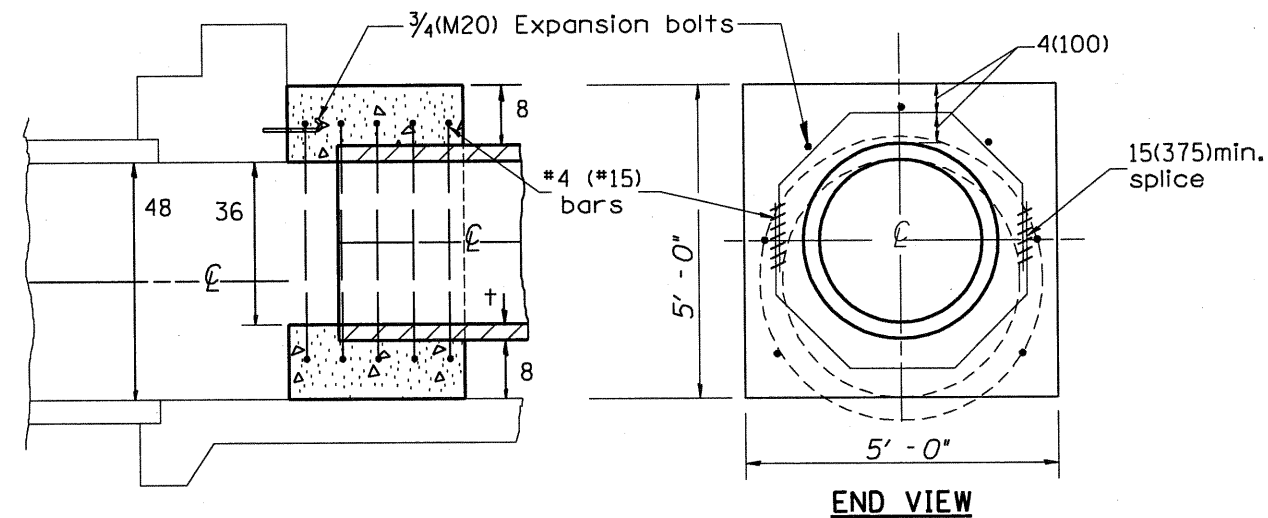
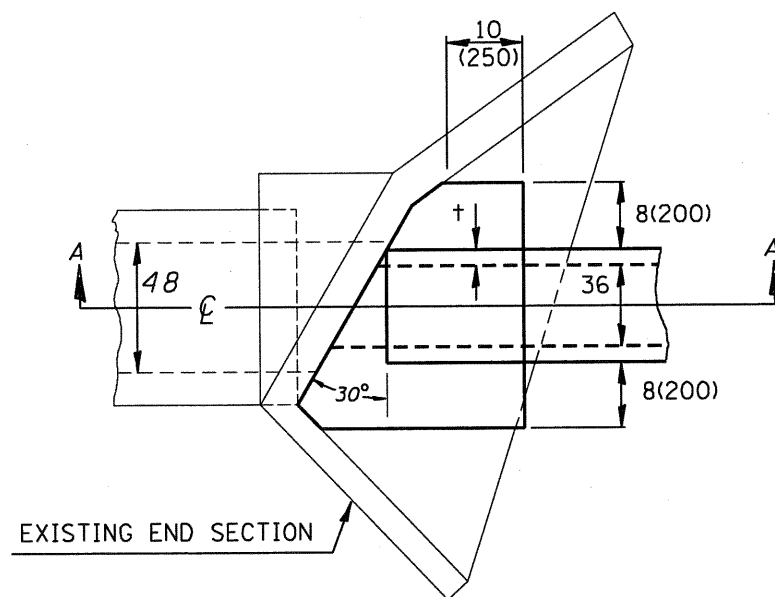


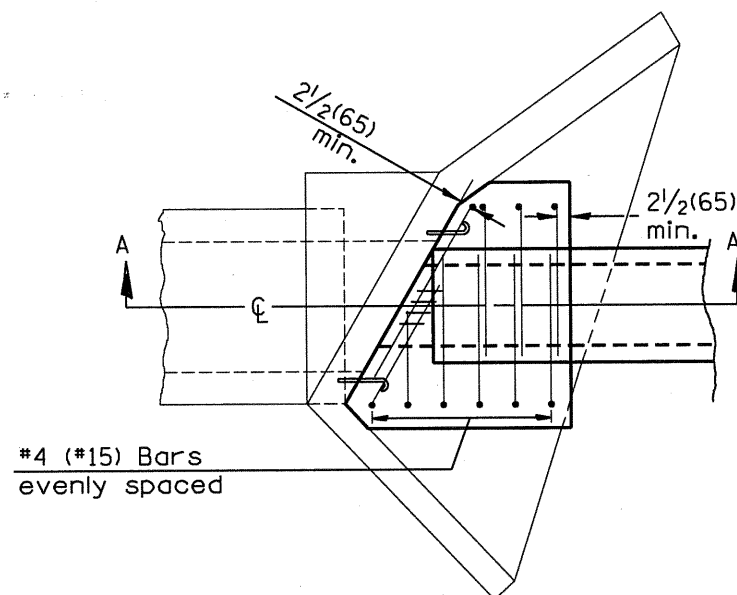
SECTION A-A  
(REINFORCEMENT OMITTED FOR CLARITY)



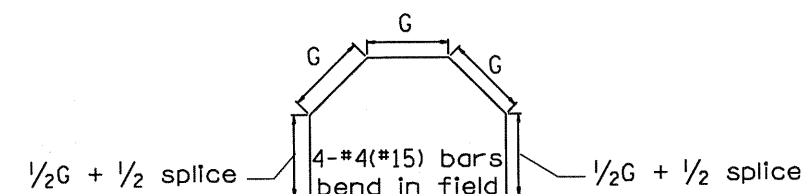
SECTION A-A  
(SHOWING REINFORCEMENT)



PLAN VIEW  
(REINFORCEMENT OMITTED FOR CLARITY)



PLAN VIEW  
(SHOWING REINFORCEMENT)



# GENERAL NOTES

- The collar shall be constructed entirely of CLASS SI CONCRETE and in accordance with the applicable portions of section 503 of the Standard Specifications. Reinforcement bars shall conform to section 508.
- Expansion bolts shall consist of approved expansion anchors, and 3/4 (M20) hook bolts which conform to section 1006.09. These bolts shall extend at least 8(200) into the new concrete.

E	D	t	COLLAR				
			CONC. COLLAR	REINFORCEMENT BARS			EXPANSION BOLT
			CU. YD.	G	L	LBS.	EACH
5'-0"	36	4	1.4	21 1/2	8'-5"	62	7

All dimensions are in inches (millimeters) unless otherwise noted.

F.A.P. RTE.	SECTION	COUNTY	TOTAL SHEETS	SHEET NO.
317	15W-2,RS-3,16W-3,RS-5	FULTON	171	95
CONTRACT NO. 88098				
FED. ROAD DIST. NO. ILLINOIS FED. AID PROJECT				

STATE OF ILLINOIS  
DEPARTMENT OF TRANSPORTATION

SKewed PIPE CULVERT EXTENSION COLLAR DETAIL  
STA. 77+09 RT

NOT TO SCALE