

F.A. RTE.	SECTION	COUNTY	TOTAL SHEETS	SHEET NO.
00-P4002-03-BT		PERDIA	53	19
STA. 100+00.00		TO STA. 116+00.00		
FED. ROAD DIST. NO. ILLINOIS FED. AID PROJECT				

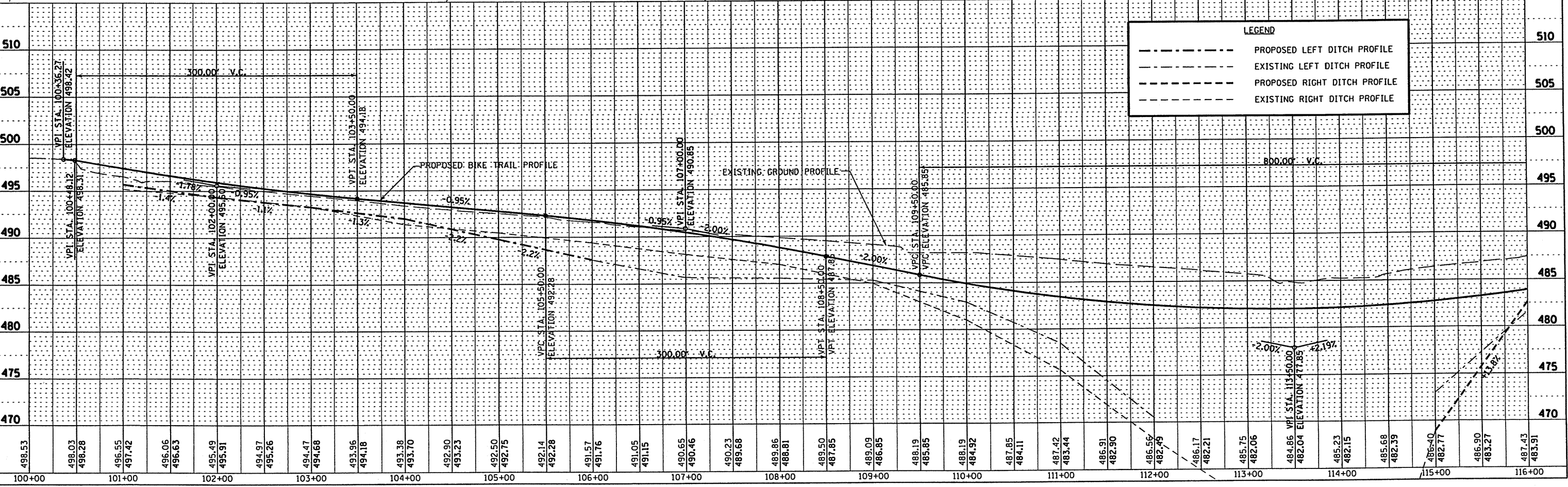
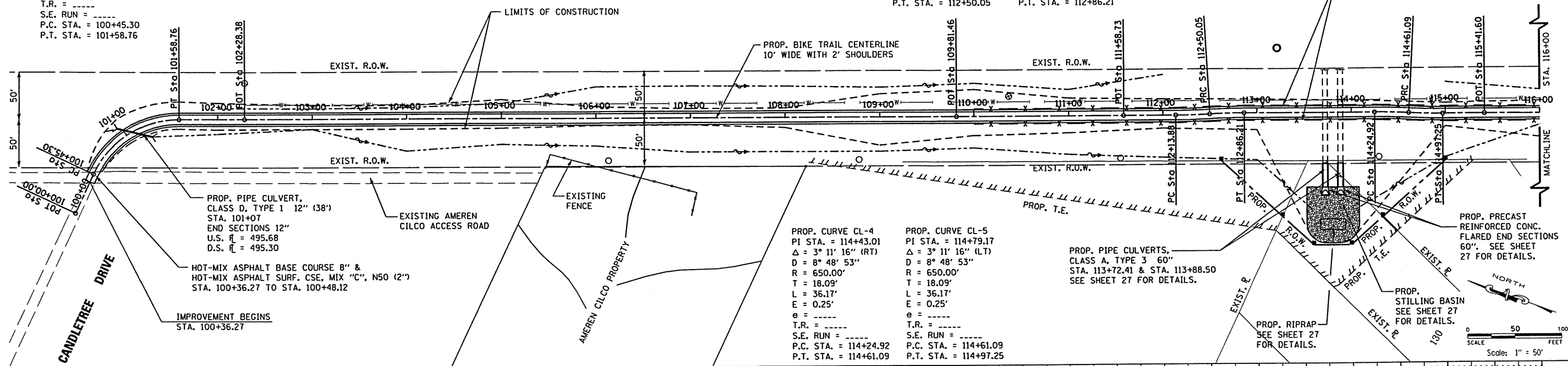
PROP. CURVE CL-1  
PI STA. = 101+09.02  
 $\Delta = 65^\circ 00' 15''$  (RT)  
D = 57' 17' 45"  
R = 100.00'  
T = 63.71'  
L = 113.45'  
E = 18.57'  
e = -----  
T.R. = -----  
S.E. RUN = -----  
P.C. STA. = 100+45.30  
P.T. STA. = 101+58.76

PROP. CURVE CL-2  
PI STA. = 112+31.97  
 $\Delta = 3^\circ 11' 16''$  (LT)  
D = 8' 48' 53"  
R = 650.00'  
T = 18.09'  
L = 36.17'  
E = 0.25'  
e = -----  
T.R. = -----  
S.E. RUN = -----  
P.C. STA. = 112+13.88  
P.T. STA. = 112+50.05

PROP. CURVE CL-3  
PI STA. = 112+68.14  
 $\Delta = 3^\circ 11' 16''$  (RT)  
D = 8' 48' 53"  
R = 650.00'  
T = 18.09'  
L = 36.17'  
E = 0.25'  
e = -----  
T.R. = -----  
S.E. RUN = -----  
P.C. STA. = 112+50.05  
P.T. STA. = 112+86.21

PROP. CURVE CL-4  
PI STA. = 114+43.01  
 $\Delta = 3^\circ 11' 16''$  (RT)  
D = 8' 48' 53"  
R = 650.00'  
T = 18.09'  
L = 36.17'  
E = 0.25'  
e = -----  
T.R. = -----  
S.E. RUN = -----  
P.C. STA. = 114+24.92  
P.T. STA. = 114+61.09

PROP. CURVE CL-5  
PI STA. = 114+79.17  
 $\Delta = 3^\circ 11' 16''$  (LT)  
D = 8' 48' 53"  
R = 650.00'  
T = 18.09'  
L = 36.17'  
E = 0.25'  
e = -----  
T.R. = -----  
S.E. RUN = -----  
P.C. STA. = 114+61.09  
P.T. STA. = 114+97.25



MAURER & STUTZ, INC.  
ENGINEERS SURVEYORS

DATE: \_\_\_\_\_ BY: \_\_\_\_\_  
DATE: \_\_\_\_\_ BY: \_\_\_\_\_  
DATE: \_\_\_\_\_ BY: \_\_\_\_\_

LEGEND	
---	PROPOSED LEFT DITCH PROFILE
---	EXISTING LEFT DITCH PROFILE
---	PROPOSED RIGHT DITCH PROFILE
---	EXISTING RIGHT DITCH PROFILE

