

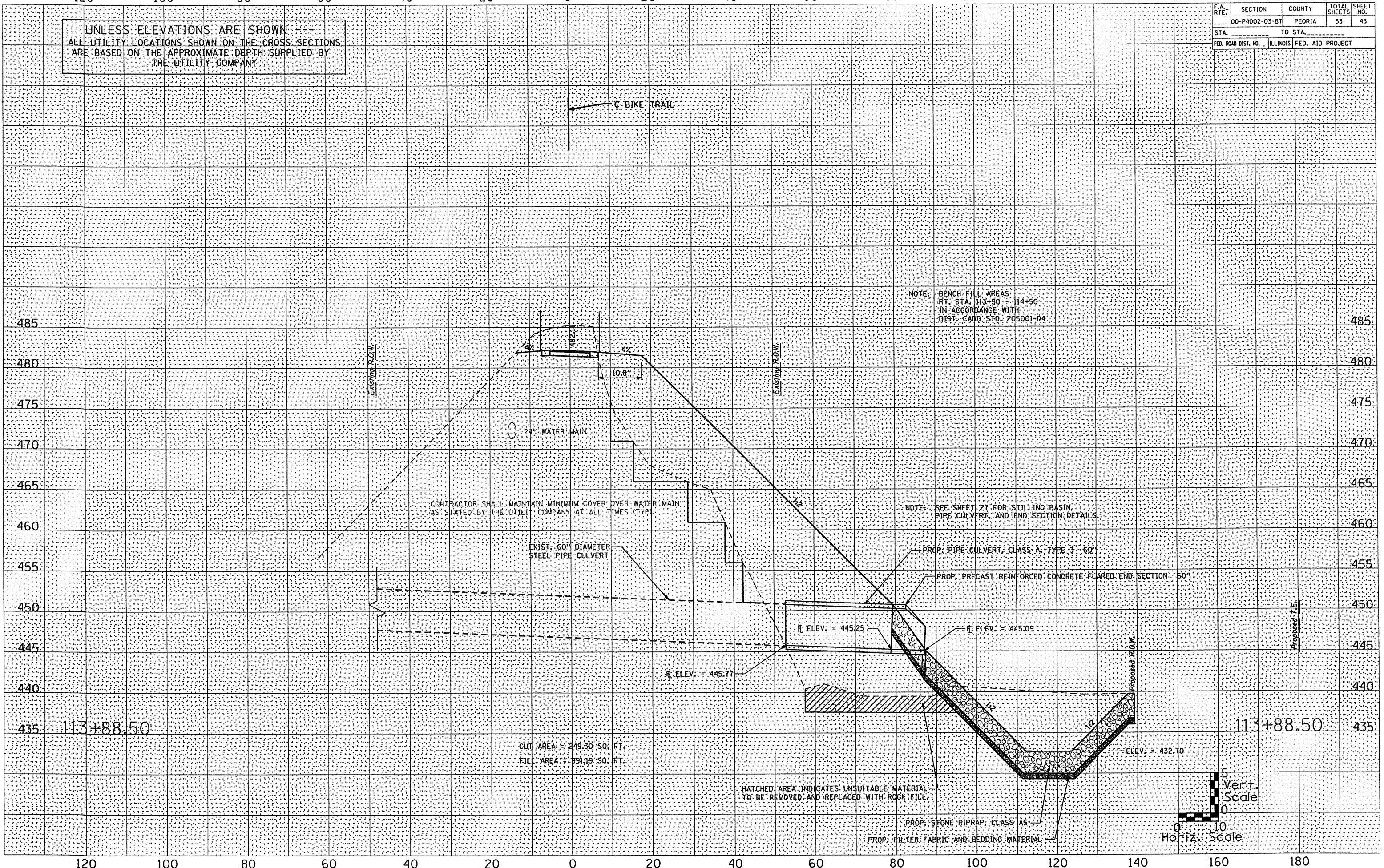
F.A. RTE.	SECTION	COUNTY	TOTAL SHEETS	SHEET NO.
	DO-P4002-03-B1	PEORIA	53	43
STA.	TO STA.			
FED. ROAD DIST. NO.	ILLINOIS	FED. AID PROJECT		

UNLESS ELEVATIONS ARE SHOWN
ALL UTILITY LOCATIONS SHOWN ON THE CROSS SECTIONS
ARE BASED ON THE APPROXIMATE DEPTH SUPPLIED BY
THE UTILITY COMPANY

DATE	
BY	
CONVERTED	
PLOTTED	
TEMPLATE	
AREAS	
CHECKED	
FINAL SURVEY	
NOTE BOOK	
NO.	



DATE	
BY	
CONVERTED	
PLOTTED	
TEMPLATE	
AREAS	
CHECKED	
ORIGINAL SURVEY	
NOTE BOOK	
NO.	



NOTE: BENCH FILL AREAS
RT. STA. 113+90 - 14+50
IN ACCORDANCE WITH
DIST. CADD. STD. 205001-04

CONTRACTOR SHALL MAINTAIN MINIMUM COVER OVER WATER MAIN
AS STATED BY THE UTILITY COMPANY AT ALL TIMES (TYP.)

NOTE: SEE SHEET 27 FOR STILLING BASIN,
PIPE CULVERT, AND END SECTION DETAILS.

EXIST. 60" DIAMETER
STEEL PIPE CULVERT

PROP. PIPE CULVERT, CLASS A, TYPE 3 - 60"

PROP. PRECAST REINFORCED CONCRETE FLARED END SECTION - 60"

R. ELEV. = 445.29

R. ELEV. = 445.09

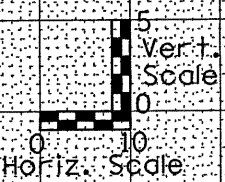
R. ELEV. = 445.77

ELEV. = 432.70

CUT AREA = 249.30 SQ. FT.
FILL AREA = 891.09 SQ. FT.

HATCHED AREA INDICATES UNSUITABLE MATERIAL
TO BE REMOVED AND REPLACED WITH ROCK FILL.

PROP. STONE RIPRAP, CLASS A5
PROP. FILTER FABRIC AND BEDDING MATERIAL



113+88.50

113+88.50