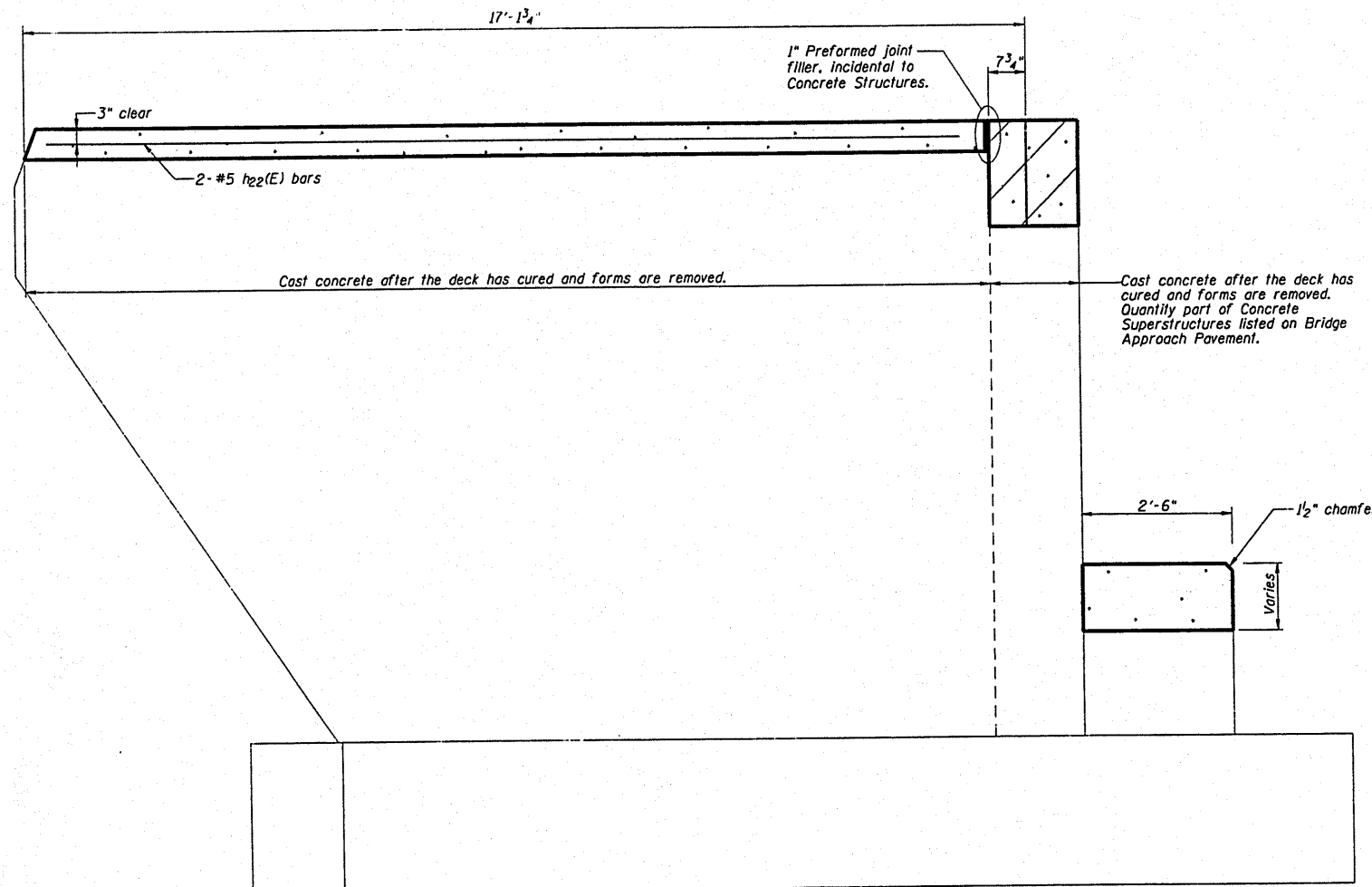
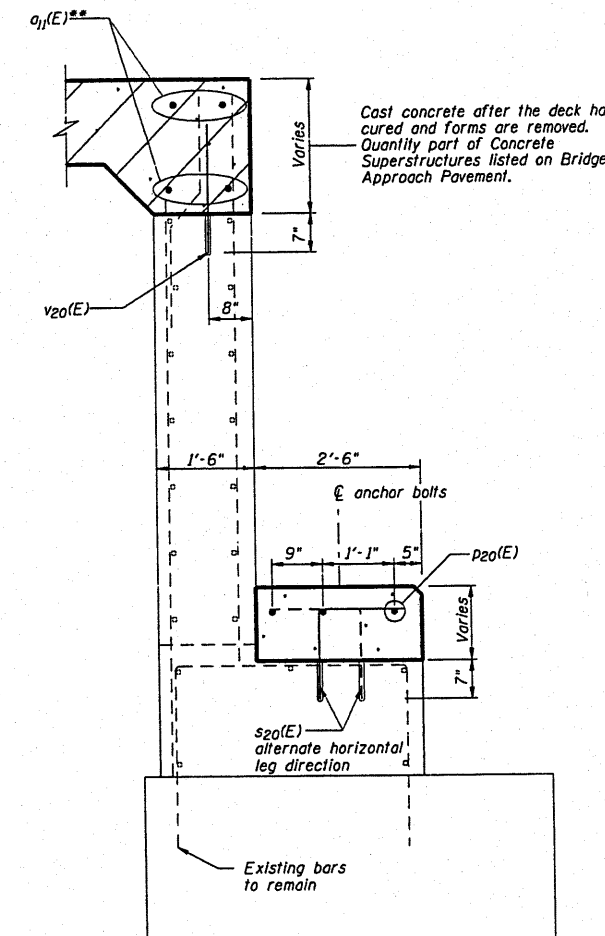


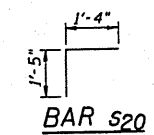
| | | | | |
|-----------------------|----------|-------------------|-------|------|
| ROUTE NO. | SECTION | COUNTY | SHEET | PAGE |
| FAS 447 | # | Fulton | 43 | 35 |
| FED. ROAD DIST. NO. 7 | ILLINOIS | FED. AID PROJECT: | | |



**WEST ABUTMENT
SIDE ELEVATION**
For rehabilitation



**WEST ABUTMENT
SECTION**
For rehabilitation



| BILL OF MATERIAL WEST ABUTMENT | | | | |
|-------------------------------------|-----|----------|--------|-------|
| Bar | No. | Size | Length | Shape |
| h22(E) | 4 | # 5 | 16'-0" | — |
| p20(E) | 3 | # 6 | 33'-6" | — |
| s20(E) | 34 | # 5 | 2'-9" | ┌ |
| v20(E) | 34 | # 5 | 1'-4" | — |
| Concrete Structures | | Cu. Yds. | 4.4 | |
| Reinforcement Bars, Epoxy Coated | | Lbs. | 370 | |
| Concrete Sealer | | Sq. Yds. | 22 | |
| Structure Excavation | | Cu. Yds. | 2 | |

** See Bridge Approach Pavement, sheet 42 for #6 a11(E) bars.

Reinforcement bars designated (E) shall be epoxy coated.

Epoxy anchor v20(E) and s20(E) into existing concrete using a pre-drilled hole and EPCON 6 two-part ceramic epoxy or Hilli 2-part adhesive HIT-RE 500-SD. The cost is included with the cost of Reinforcement Bars, Epoxy Coated.

| | | | | | |
|------|------------------|-----|------|----------|----|
| DSGN | K.J. Hoffmann | | | | |
| DR | K.J. Hoffmann | | | | |
| CHK | J.A. Fraenhoffer | | | | |
| APVD | J.A. Fraenhoffer | NO. | DATE | REVISION | BY |

FRAUENHOFFER
Frauenhoffer and Associates, P.C. Consulting Engineers
3002 Crossing Court Champaign, IL 61822 217-351-6268

| | | |
|---|--|----------------------|
| WEST ABUTMENT REHABILITATION-SHEET 2 OF 2 | | SHEET 35 |
| FAS 447 (C.H. 17) OVER SPOON RIVER | | DWG NO. 8015ABUT.dgn |
| SECTION 08-00121-01-BR | | DATE JAN 2010 |
| FULTON COUNTY | | PROJ NO. 8015 |