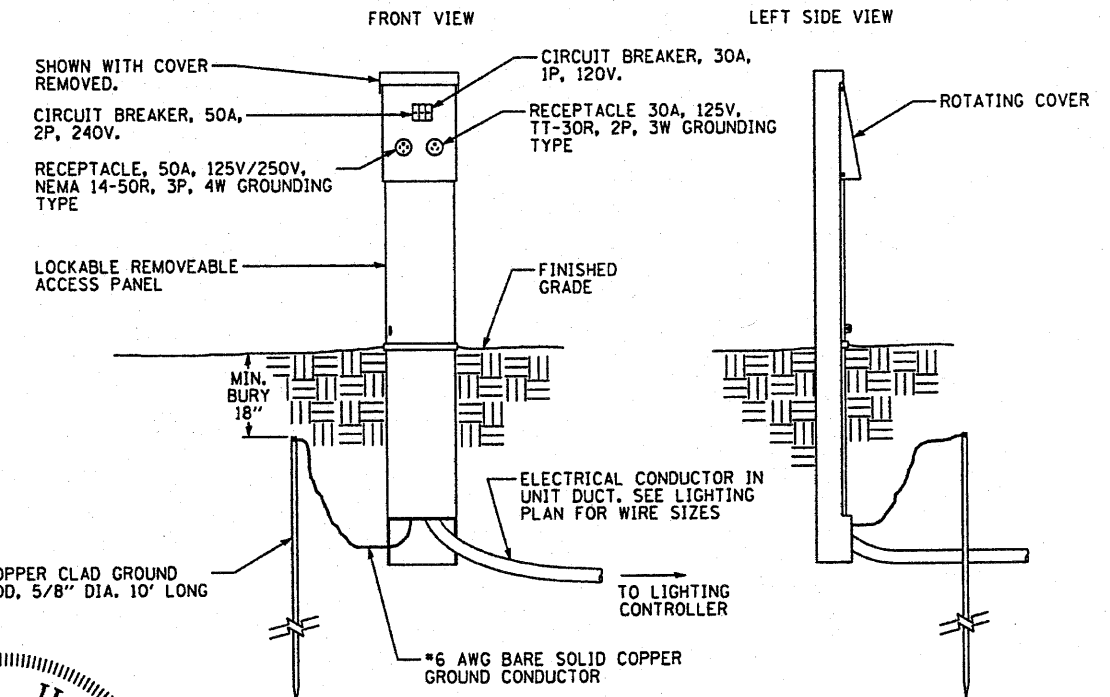


PROPOSED LIGHTING CONTROLLER AND UTILITY PEDESTAL
(N.T.S.)



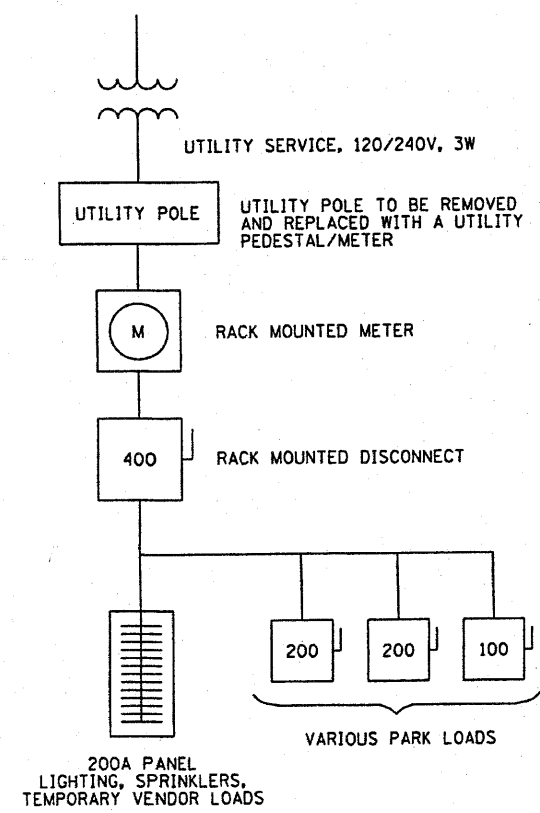
POWER PEDESTAL DETAIL
(TYP. OF 4, SEE LIGHTING LAYOUT PLAN)



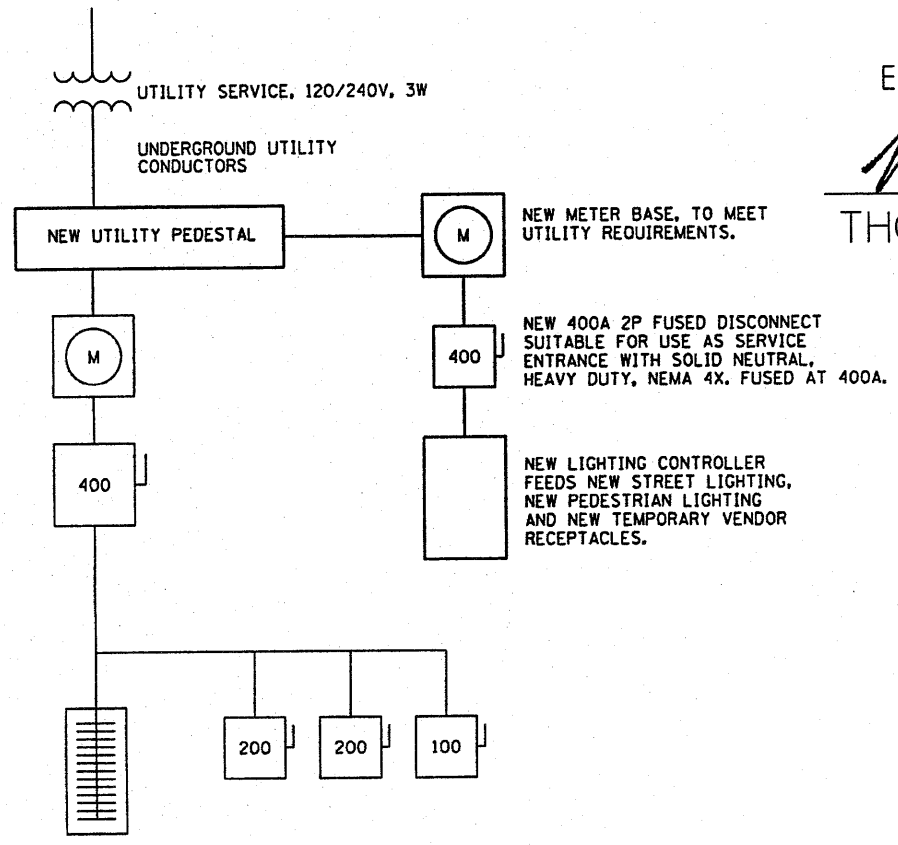
EXPIRES: 11/30/2011

Thomas Memminger
THOMAS MEMMINGER
ELECTRICAL ENGINEER

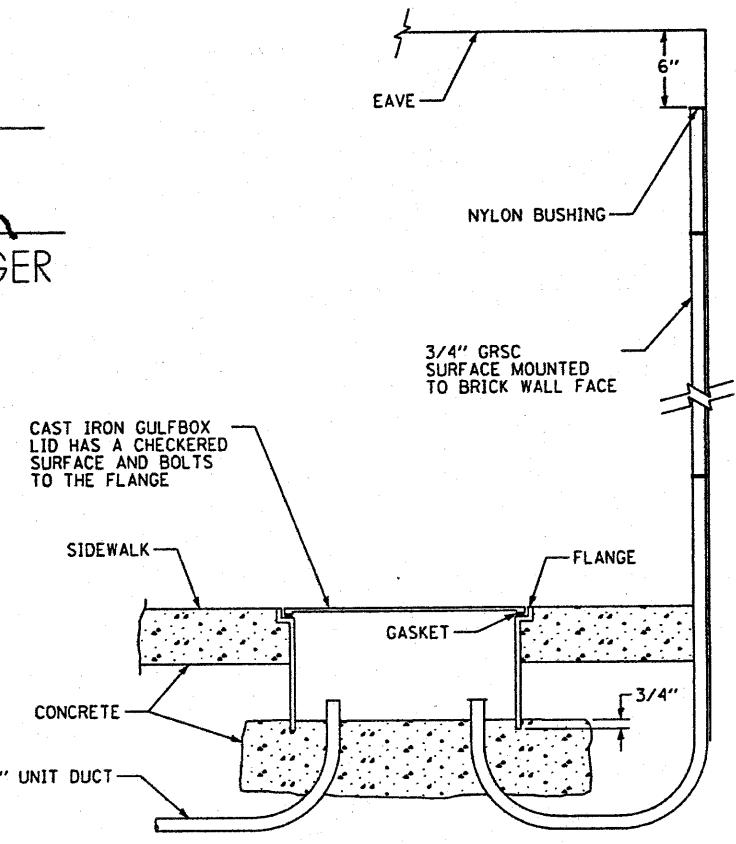
10/20/2010
DATE



EXISTING ONE LINE



NEW ONE LINE
(NEW EQUIPMENT IN BOLD)



SIDEWALK GULFBOX DETAIL

FILE NAME *
...0308.Misc Elect Detail B.dgn

USER NAME = Jim Reubach	DESIGNED - TM	REVISED -
PLOT SCALE = 60.0000' / IN.	DRAWN - RAH	REVISED -
PLOT DATE = 10/27/2010	CHECKED - TM	REVISED -
	DATE -	REVISED -

STATE OF ILLINOIS
DEPARTMENT OF TRANSPORTATION

MISCELLANEOUS ELECTRICAL DETAILS B
SCALE: N.T.S. SHEET NO. 30 OF 49 SHEETS STA. TO STA.

F.A. RTE.	SECTION	COUNTY	TOTAL SHEETS	SHEET NO.
N/A	05-00017-00-FP	SCHUYLER	49	30A
FED. ROAD DIST. NO.		ILLINOIS FED. AID PROJECT		
CONTRACT NO.				

Revised 10-29-10