

CODE NO.	ITEM	UNIT	TOTAL QUANTITY	1000 FEDERAL PARTICIPATING	Y060 FEDERAL NON-PARTICIPATING
20200100	EARTH EXCAVATION	CU YD	1,751	1,751	
20800150	TRENCH BACKFILL	CU YD	162	162	
25000400	NITROGEN FERTILIZER NUTRIENT	POUND	16	16	
25000500	PHOSPHORUS FERTILIZER NUTRIENT	POUND	16	16	
25000600	POTASSIUM FERTILIZER NUTRIENT	POUND	16	16	
25000700	AGRICULTURAL GROUND LIMESTONE	TON	0.5	0.5	
25200100	SODDING	SQ YD	825	825	
28000500	INLET AND PIPE PROTECTION	EACH	7	7	
28000510	INLET FILTERS	EACH	7	7	
31100300	SUB-BASE GRANULAR MATERIAL, TYPE A 4"	SQ YD	7,142	7,142	
31101900	SUB-BASE GRANULAR MATERIAL, TYPE C	TON	360	360	
35501310	HOT-MIX ASPHALT BASE COURSE, 6 1/2"	SQ YD	2,808	2,808	
40600100	BITUMINOUS MATERIALS (PRIME COAT)	GALLON	1,067	1,067	
40600300	AGGREGATE (PRIME COAT)	TON	2	2	
40603310	HOT-MIX ASPHALT SURFACE COURSE, MIX "C" N50	TON	95	95	
42000300	PORTLAND CEMENT CONCRETE PAVEMENT 8 INCH	SQ YD	3,358	3,358	
42001300	PROTECTIVE COAT	SQ YD	6,021	6,021	
42400100	PORTLAND CEMENT CONCRETE SIDEWALK 4 INCH	SQ FT	23,525	23,525	
42400800	DETECTABLE WARNINGS	SQ FT	280	280	
44000100	PAVEMENT REMOVAL	SQ YD	2,311	2,311	
44000155	HOT-MIX ASPHALT SURFACE REMOVAL, 1 1/2"	SQ YD	1,123	1,123	
44000300	CURB REMOVAL	F00T	1,030	1,030	
44000600	SIDEWALK REMOVAL	SQ FT	12,986	12,986	
44201341	CLASS C PATCHES, TYPE II, 9 INCH	SQ YD	28	28	
55100500	STORM SEWER REMOVAL 12"	F00T	222	222	
55100900	STORM SEWER REMOVAL 18"	F00T	69	69	
56100600	WATER MAIN 6"	F00T	722		722
56100800	WATER MAIN 10"	F00T	384		384
56104800	WATER VALVES 4"	EACH	32		32
56104900	WATER VALVES 6"	EACH	3		3
56105000	WATER VALVES 8"	EACH	1		1
56105100	WATER VALVES 10"	EACH	1		1
56201120	WATER SERVICE LINE 4"	F00T	310		310
56300100	ADJUSTING SANITARY SEWERS, 8-INCH DIAMETER OR LESS	F00T	200	200	
56400500	FIRE HYDRANTS TO BE REMOVED	EACH	2	2	
59300100	CONTROLLED LOW-STRENGTH MATERIAL	CU YD	10		10
60107600	PIPE UNDERDRAINS 4"	F00T	1,263	1,263	
60218400	MANHOLES, TYPE A, 4'-DIAMETER, TYPE 1 FRAME, CLOSED LID	EACH	3	3	
60220230	MANHOLES, TYPE A, 4'-DIAMETER, WITH SPECIAL FRAME AND GRATE	EACH	1	1	

Δ SPECIALITY ITEMS
 (1)NON-PARTICIPATION/ ITEP

Revised 10/29/10

FILE NAME = W:\Transportation\2248\22480001.dgn	USER NAME = jolson	DESIGNED - JRB	REVISED -	STATE OF ILLINOIS DEPARTMENT OF TRANSPORTATION	CITY OF RUSHVILLE DOWNTOWN SQUARE BRICK STREET RECONSTRUCTION SUMMARY OF QUANTITIES	F.A.U. RTE. N/A	SECTION 05-00017-00-FP	COUNTY SCHUYLER	TOTAL SHEETS 49	SHEET NO. 3	
						SCALE: N/A	SHEET NO. OF SHEETS	STA.	TO STA.	FED. ROAD DIST. NO. 6 (ILLINOIS) FED. AID PROJECT	
						CONTRACT NO. 93541					

CODE NO.	ITEM	UNIT	TOTAL QUANTITY	1000 FEDERAL PARTICIPATING	Y060 FEDERAL NON-PARTICIPATING
60236800	INLETS, TYPE A, TYPE 11 FRAME AND GRATE	EACH	1	1	
60238700	INLETS, TYPE A, WITH SPECIAL FRAME AND GRATE	EACH	2	2	
60240310	INLETS, TYPE B, TYPE 11 FRAME AND GRATE	EACH	2	2	
60240385	INLETS, TYPE B, WITH SPECIAL FRAME AND GRATE	EACH	1	1	
60266600	VALVE BOXES TO BE ADJUSTED	EACH	9	9	
60500060	REMOVING INLETS	EACH	3	3	
60602600	CONCRETE GUTTER, TYPE A (MODIFIED)	FOOT	1,042	1,042	
60603800	COMBINATION CONCRETE CURB AND GUTTER, TYPE B-6.12	FOOT	2,450	2,450	
61139800	STORM SEWERS, SPECIAL 4"	FOOT	242	242	
61139900	STORM SEWERS, SPECIAL 6"	FOOT	200	200	
67100100	MOBILIZATION	L SUM	1	1	
70103700	TRAFFIC CONTROL COMPLETE	L SUM	1	1	
70300210	TEMPORARY PAVEMENT MARKING - LETTERS AND SYMBOLS	SQ FT	33	33	
70300220	TEMPORARY PAVEMENT MARKING - LINE 4"	FOOT	7,538	7,538	
70300240	TEMPORARY PAVEMENT MARKING - LINE 6"	FOOT	536	536	
70300280	TEMPORARY PAVEMENT MARKING - LINE 24"	FOOT	165	165	
70301000	WORK ZONE PAVEMENT MARKING REMOVAL	SQ FT	3,144	3,144	
72000100	SIGN PANEL - TYPE 1	SQ FT	75	75	
72800105	TELESCOPING STEEL SIGN SUPPORT (SPECIAL)	FOOT	72	72	
78001100	PAINT PAVEMENT MARKING, LETTERS AND SYMBOLS	SQ FT	33	33	
78001110	PAINT PAVEMENT MARKING - LINE 4"	FOOT	4,884	4,884	
78001130	PAINT PAVEMENT MARKING - LINE 6"	FOOT	536	536	
78001180	PAINT PAVEMENT MARKING - LINE 24"	FOOT	141	141	
80400100	ELECTRIC SERVICE INSTALLATION	EACH	1	1	
81017510	CONDUIT IN TRENCH, 1" DIA., COILABLE NONMETALLIC CONDUIT	FOOT	210	210	
81018500	CONDUIT, PUSHED, 2" DIA., GALVANIZED STEEL	FOOT	485	485	
81500110	GULFBOX JUNCTION, CAST IRON	EACH	1	1	
81500120	GULFBOX JUNCTION, COMPOSITE CONCRETE	EACH	2	2	
81603020	UNIT DUCT, 600V, 3-1C NO.10, 1/C NO.10 GROUND, (XLP-TYPE USE), 3/4" DIA. POLYETHYLENE	FOOT	320	320	
81603047	UNIT DUCT, 600V, 3-1C NO.6, 1/C NO.6 GROUND, (XLP-TYPE USE), 1 1/4" DIA. POLYETHYLENE	FOOT	1,765	1,765	
81603055	UNIT DUCT, 600V, 3-1C NO.8, 1/C NO.8 GROUND, (XLP-TYPE USE), 1" DIA. POLYETHYLENE	FOOT	445	445	
81603075	UNIT DUCT, 600V, 3-1C NO.2, 1/C NO.2 GROUND, (XLP-TYPE USE), 1 1/4" DIA. POLYETHYLENE	FOOT	555	555	
81603085	UNIT DUCT, 600V, 3-1C NO.4, 1/C NO.4 GROUND, (XLP-TYPE USE), 1 1/4" DIA. POLYETHYLENE	FOOT	1,670	1,670	
81900200	TRENCH AND BACKFILL FOR ELECTRICAL WORK	FOOT	2,929	2,929	
82500505	LIGHTING CONTROLLER, SPECIAL	EACH	1	1	
84200804	REMOVAL OF POLE FOUNDATION	EACH	20	20	
84500120	REMOVAL OF ELECTRIC SERVICE INSTALLATION	EACH	1	1	
A2000118	TREE, ACER X FREEMANII AUTUMN BLAZE (AUTUMN BLAZE FREEMAN MAPLE), 3" CALIPER, BALLED AND BURLAPPED	EACH	3	3	

• SEE SPECIAL PROVISIONS
 Δ SPECIALITY ITEMS
 (1)NON-PARTICIPATION/ ITEP

Revised 10/29/10

FILE NAME = Y:\Transportation\2240\22400001.dgn	USER NAME = jolson	DESIGNED - JRB	REVISED -	STATE OF ILLINOIS DEPARTMENT OF TRANSPORTATION	CITY OF RUSHVILLE DOWNTOWN SQUARE BRICK STREET RECONSTRUCTION SUMMARY OF QUANTITIES	F.A.I. RTE.	SECTION	COUNTY	TOTAL SHEETS	SHEET NO.	
		DRAWN - JMO	REVISED -			N/A	05-00017-00-FP	SCHUYLER	49	4	
		CHECKED - JRB	REVISED -			SCALE: N/A	SHEET NO. OF SHEETS	STA.	TO STA.	CONTRACT NO. 93541	
		DATE - 2/12/2010	REVISED -					FED. ROAD DIST. NO. 6 [ILLINOIS] FED. AID PROJECT			

SUMMARY OF QUANTITIES

SP	CODE NO.	ITEM DESCRIPTION	UNIT	TOTAL QUANTITY
	80400100	ELECTRIC SERVICE INSTALLATION	EACH	1
	81017510	CONDUIT IN TRENCH, 1" DIA., COILABLE NONMETALLIC CONDUIT	FOOT	210
	81018500	CONDUIT, PUSHED, 2" DIA., GALVANIZED STEEL	FOOT	485
	81500110	GULFBOX JUNCTION, CAST IRON	EACH	1
	81500120	GULFBOX JUNCTION, COMPOSITE CONCRETE	EACH	2
	81603020	UNIT DUCT, 600V, 3-1C NO.10, 1/C NO.10 GROUND, (XLP-TYPE USE), 3/4" DIA. POLYETHYLENE	FOOT	320
	81603047	UNIT DUCT, 600V, 3-1C NO.6, 1/C NO.6 GROUND, (XLP-TYPE USE), 1 1/4" DIA. POLYETHYLENE	FOOT	1,765
	81603055	UNIT DUCT, 600V, 3-1C NO.8, 1/C NO.8 GROUND, (XLP-TYPE USE), 1" DIA. POLYETHYLENE	FOOT	445
	81603075	UNIT DUCT, 600V, 3-1C NO.2, 1/C NO.2 GROUND, (XLP-TYPE USE), 1 1/4" DIA. POLYETHYLENE	FOOT	555
	81603085	UNIT DUCT, 600V, 3-1C NO.4, 1/C NO.4 GROUND, (XLP-TYPE USE), 1 1/4" DIA. POLYETHYLENE	FOOT	670
	81900200	TRENCH AND BACKFILL FOR ELECTRICAL WORK	FOOT	2,929
	82500505	LIGHTING CONTROLLER, SPECIAL	EACH	1
	84200804	REMOVAL OF POLE FOUNDATION	EACH	20
	84500120	REMOVAL OF ELECTRICAL SERVICE INSTALLATION	EACH	1
	XX004046	AERIAL CABLE REMOVAL	FOOT	2,460
	XX005049	POWER PEDESTALS	EACH	4
	XX007039	STREET LIGHTING ASSEMBLY COMPLETE TYPE F1	EACH	20
	XX007040	STREET LIGHTING ASSEMBLY COMPLETE TYPE F2	EACH	8

GENERAL NOTES:

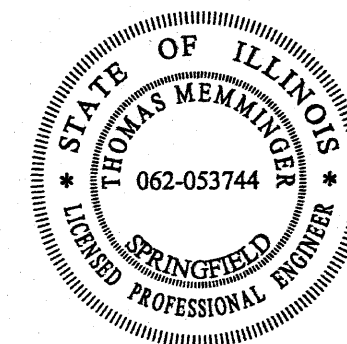
- ALL CONSTRUCTION AND ASSOCIATED IMPROVEMENTS SHALL BE IN ACCORDANCE WITH THE LATEST EDITIONS OF THE ILLINOIS DEPARTMENT OF TRANSPORTATION'S "STANDARD SPECIFICATIONS FOR ROAD AND BRIDGE CONSTRUCTION", "SUPPLEMENTAL SPECIFICATIONS AND RECURRING SPECIAL PROVISIONS", "HIGHWAY STANDARDS", THE "MANUAL ON UNIFORM TRAFFIC CONTROL DEVICES", AND THE "SPECIAL CONDITIONS" INCLUDED IN THE BID DOCUMENTS.
- UTILITIES SHOWN ON THE PLANS ARE APPROXIMATE. THE CONTRACTOR SHALL FIELD VERIFY & LOCATE ALL UTILITIES IN THE FIELD AND COORDINATE THEIR RELOCATION, IF NECESSARY, WITH THE RESPECTIVE UTILITY OWNER.
- THE CONTRACTOR SHALL BE RESPONSIBLE FOR PROTECTING UTILITY PROPERTY FROM CONSTRUCTION OPERATIONS AS OUTLINED IN ARTICLE 107.31 OF THE STANDARD SPECIFICATIONS.
- IT IS THE CONTRACTOR'S RESPONSIBILITY TO ASCERTAIN EXISTING FIELD CONDITIONS BEFORE BIDDING ON THE PROJECT.
- THE CONTRACTOR SHALL TAKE CARE NOT TO STORE OR DISPOSE OF MATERIALS WITHIN THE LIMITS OF THE IMPROVEMENT AND TAKE CARE TO LIMIT CONSTRUCTION ACTIVITIES TO WITHIN THE RIGHT-OF-WAY. UNNECESSARY ENCROACHMENTS ONTO PRIVATE OR PUBLIC AREAS WILL NOT BE ALLOWED.
- ALL DISTURBED AREAS SHALL BE RESTORED WITH 4" OF TOPSOIL AND SODDING WITH SUPPLEMENTAL WATERING. THIS WORK WILL BE IN ACCORDANCE WITH SECTIONS 211, AND 252 OF THE STANDARD SPECIFICATIONS.
- ALL LOCATIONS AND DIMENSIONS ARE APPROXIMATE. CONTRACTOR SHALL FIELD VERIFY ALL ELECTRICAL EQUIPMENT LOCATIONS AND DIMENSIONS PRIOR TO ORDERING AND INSTALLATION.
- ALL ELECTRICAL EQUIPMENT SHALL BE INSTALLED IN CONFORMANCE WITH NFPA70 (NEC MOST CURRENT ISSUE). THE RESPECTIVE EQUIPMENT MANUFACTURER'S DIRECTIONS AND ALL OTHER APPLICABLE LOCAL CODES, LAWS, ORDINANCES AND REQUIREMENTS IN FORCE. ANY INSTALLATIONS WHICH WOULD VOID THE U.L. LISTINGS (OR THIRD PARTY LISTING) AND/OR THE MANUFACTURER'S WARRANTY OF A DEVICE SHALL NOT BE PERMITTED.

LEGEND

	LIGHT FIXTURE. ** = IDENTIFIER
	CIRCUIT BREAKER
	FUSE
	UNDERGROUND ELECTRICAL
	POWER POLE
	DIRECTIONAL BORE
	NORMALLY OPEN (N.O.) CONTACT.
	NORMALLY CLOSED (N.C.) CONTACT.
	CONTACTOR COIL
	PHOTOCELL
	3-POSITION SELECTOR SWITCH (H-O-A SHOWN)
	GROUND
	TRANSFORMER
	METER
	DISCONNECT • = AMP RATING
	BREAKER PANEL

ABBREVIATIONS

AUX	AUXILIARY
AWG	AMERICAN WIRE GAGE
C	CONDUIT
CAT.	CATALOG
CB	CIRCUIT BREAKER
CIRC. BRKR.	CIRCUIT BREAKER
CKT	CIRCUIT
CPT	CONTROL POWER TRANSFORMER
DPDT	DOUBLE POLE DOUBLE THROW
DPST	DOUBLE POLE SINGLE THROW
E.C.	ELECTRICAL CONTRACTOR
EMT	ELECTRICAL METALLIC TUBING
G	GROUND
GFCI	GROUND FAULT CIRCUIT INTERRUPTER
GFI	GROUND FAULT INTERRUPTER
GND	GROUND
GRSC	GALVANIZED RIGID STEEL CONDUIT
HDPE	HIGH DENSITY POLYETHYLENE
HH	HANDHOLE
HOA	HAND OFF AUTO
KVA	KILOVOLT AMPERE
KW	KILOWATT
LC	LIGHTING CONTACTOR
MFR	MANUFACTURER
MH	MANHOLE
NEC	NATIONAL ELECTRIC CODE
NIC	NOT IN CONTRACT
NO.	NUMBER
RECEPT	RECEPTACLE
TVSS	TRANSIENT VOLTAGE SURGE SUPPRESSOR
TYP.	TYPICAL
WP	WEATHERPROOF
XFMR	TRANSFORMER



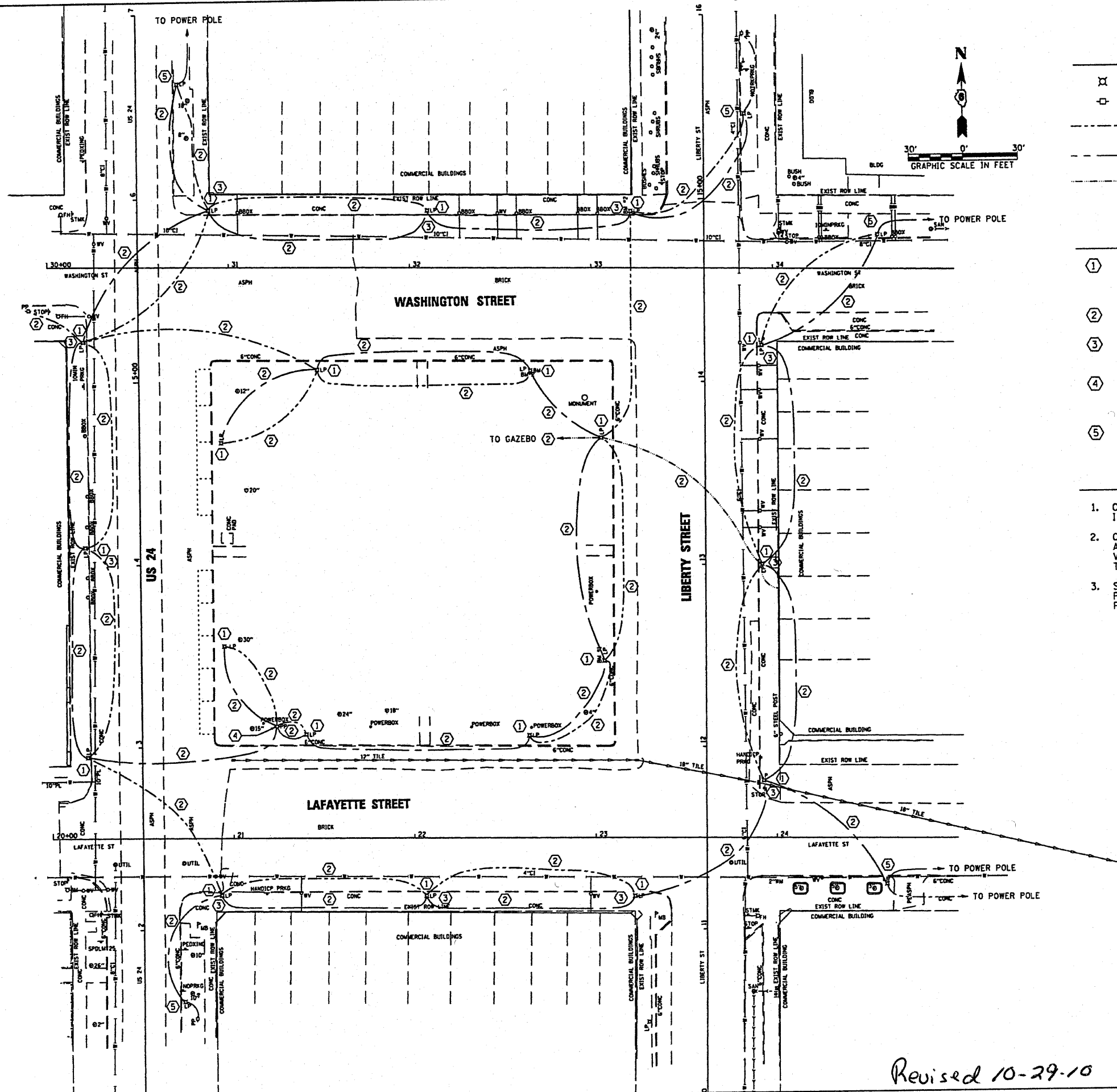
EXPIRES: 11/30/2011

Thomas Memminger
THOMAS MEMMINGER
 ELECTRICAL ENGINEER

10/20/2010
 DATE

Revised 10-29-10

FILE NAME =	USER NAME = Jim Reubach	DESIGNED - TM	REVISED -	STATE OF ILLINOIS DEPARTMENT OF TRANSPORTATION	QUANTITIES / GENERAL NOTES ABBREVIATIONS / LEGEND	F.A. RTE.	SECTION	COUNTY	TOTAL SHEETS	SHEET NO.	
...026_Quantities-General Notes.dgn		DRAWN - RAH	REVISED -			N/A	05-00017-00-FP	SCHUYLER	49	26	
		CHECKED - TM	REVISED -			CONTRACT NO.					
		DATE -	REVISED -			FED. ROAD DIST. NO. ILLINOIS FED. AID PROJECT					



LEGEND

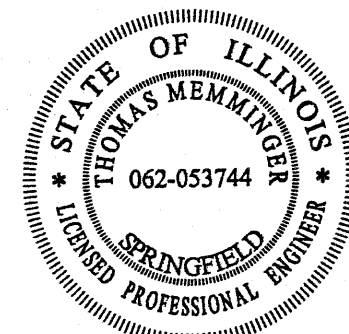
- ⊗ EXISTING LIGHT POLE, 30' NOMINAL, 6' FOUNDATION
- ⊕ EXISTING UTILITY POWER POLE
- AERIAL STREET LIGHTING CONDUCTOR WITH MESSENGER WIRE
- AERIAL AUXILIARY LIGHT CIRCUIT CONDUCTOR WITH MESSENGER WIRE
- AERIAL PUBLIC ADDRESS CIRCUIT CONDUCTOR

REMOVALS

- ① REMOVE LIGHT POLE FOUNDATION (6' DEEP) COORDINATE REMOVAL OF UTILITY OWNED 30' STEEL LIGHT POLE, FIXTURE AND WIRING WITH AMEREN. CONTACT MR. LENNY MOORE (217) 479-5234.
- ② REMOVE EXISTING AERIAL CIRCUIT CONDUCTORS AND MESSENGER WIRE.
- ③ REMOVE ANY AERIAL AUXILIARY CIRCUIT CONDUCTORS SPANNING BETWEEN LIGHT POLE AND ADJACENT BUILDING. REMOVAL INCLUDES MESSENGER WIRE AND ANY MOUNTING HARDWARE.
- ④ COORDINATE REMOVAL OF 35' WOODEN POWER POLE AND ITS REPLACEMENT WITH A UTILITY POWER PEDESTAL WITH THE OWNING UTILITY - AMEREN. CONTACT MR. LENNY MOORE, (217) 479-5234.
- ⑤ EXISTING LIGHTING UNITS TO REMAIN MUST BE OPERATIONAL DURING AND AFTER CONSTRUCTION.

NOTES

1. CONTRACTOR IS RESPONSIBLE FOR DISPOSAL OF ALL REMOVED ITEMS.
2. CIRCUIT ROUTING AND EQUIPMENT/FACILITY LOCATION WERE ACQUIRED WITH A VISUAL SURVEY. CONTRACTOR MUST FIELD VERIFY EXISTING CONDITIONS AND COORDINATE ALL WORK WITH THE ELECTRICAL UTILITY.
3. STREET LIGHTING CONDUCTORS AND LIGHT POLES ARE THE PROPERTY OF AMEREN. COORDINATE REMOVAL WITH THE UTILITY'S FIELD ENGINEER - MR. LENNY MOORE - (217) 479-5234.



EXPIRES: 11/30/2011

Thomas Memminger
THOMAS MEMMINGER
 ELECTRICAL ENGINEER

10/20/2010
 DATE

Revised 10-29-10

FILE NAME = ...N027.Demo.Removal Plan.dgn

USER NAME = Jim Raubach
 PLOT SCALE = 68.0000' / IN.
 PLOT DATE = 10/27/2010

DESIGNED - TM
 DRAWN - RAH
 CHECKED - TM
 DATE -

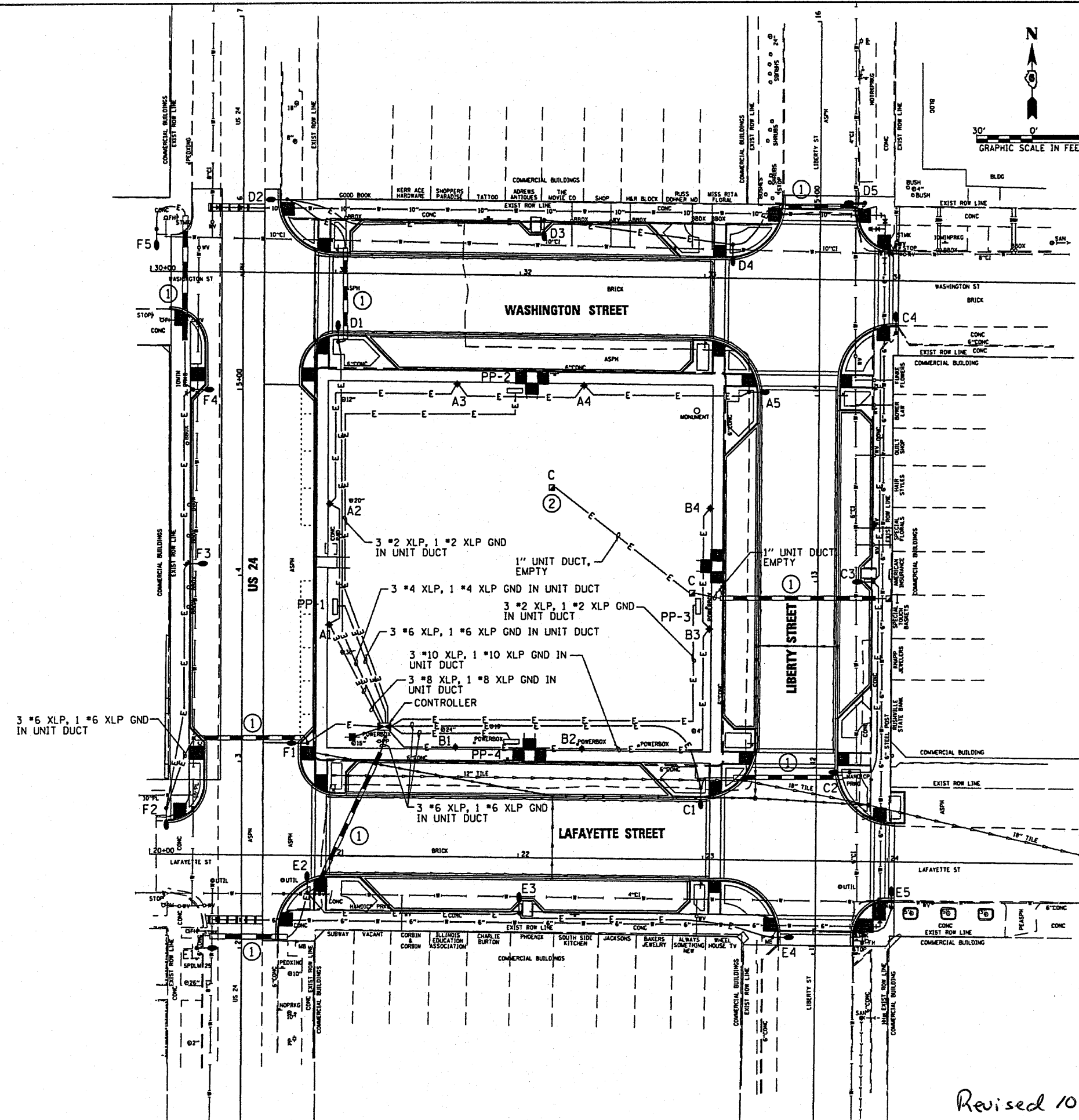
REVISED -
 REVISED -
 REVISED -
 REVISED -

STATE OF ILLINOIS
DEPARTMENT OF TRANSPORTATION

DEMOLITION & REMOVAL PLAN

SCALE: 1" = 30' SHEET NO. 27 OF 49 SHEETS STA. TO STA.

F.A. RTE.	SECTION	COUNTY	TOTAL SHEETS	SHEET NO.
N/A	05-00017-00-FP	SCHUYLER	49	27
FED. ROAD DIST. NO. [ILLINOIS] FED. AID PROJECT			CONTRACT NO.	



LEGEND

- E — BURIED CIRCUIT CONDUCTORS IN HDPE UNIT DUCT CONDUIT
- — — PUSHED CONDUIT, 2" GRSC MINIMUM 48" BENEATH PAVED SURFACE
- ♦ ** PEDESTRIAN LIGHT, 16' HT. ** = CIRCUIT AND FIXTURE NUMBER
- ** STREET LIGHT, 30' HT. ** = CIRCUIT AND FIXTURE NUMBER
- I GULFBOX, CAST IRON
- C GULFBOX, COMPOSITE CONCRETE
- PP-# POWER PEDESTAL # = IDENTIFIER
- E — ELECTRIC SERVICE INSTALLATION
- LIGHTING CONTROLLER

NOTES

- ① EXTEND DIRECTIONAL BORE BEYOND PAVEMENT EDGES BY 5' MIN.
- ② PLACE COMPOSITE GULFBOX NEAR EXISTING GAZEBO FOR PUBLIC ADDRESS WIRING. EXACT LOCATION TO BE DETERMINED BY ENGINEER.

STREET LIGHT SCHEDULE

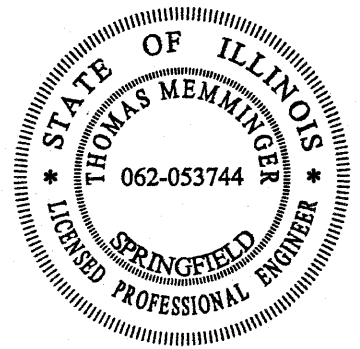
CIRCUIT & FIXTURE NO.	STATION	OFFSET
U.S. ROUTE 24		
D2	6+02.30	23.58' RT
E1	2+00.00	24.46' LT
F1	3+09.37	35.58' RT
F3	4+06.13	30.08' LT
F4	5+00.00	27.00' LT
LIBERTY STREET		
A5	14+00.89	37.12' LT
C2	11+97.71	18.10' RT
C3	13+00.11	30.08' RT
D5	15+01.70	24.08' RT
E4	11+10.47	24.12' LT
LAFAYETTE STREET		
C1	22+99.59	37.12' LT
E2	20+85.73	20.11' RT
E3	22+00.87	30.09' RT
E5	24+00.84	24.59' RT
F2	20+11.29	22.15' LT
WASHINGTON STREET		
C4	34+02.06	28.13' RT
D1	31+03.46	36.81' LT
D3	32+12.64	30.09' LT
D4	33+15.02	18.10' LT
F5	30+02.75	23.00' LT

PEDESTRIAN LIGHT SCHEDULE

CIRCUIT & FIXTURE NO.	STATION	OFFSET
U.S. ROUTE 24		
A1	3+73.53	47.08' RT
A2	4+38.74	47.08' RT
LIBERTY STREET		
B3	12+73.77	58.58' LT
B4	13+38.83	58.58' LT
LAFAYETTE STREET		
B1	21+65.36	58.58' LT
B2	22+33.98	58.58' LT
WASHINGTON STREET		
A3	31+66.37	58.59' RT
A4	32+35.19	58.59' RT

POWER PEDESTAL SCHEDULE

CIRCUIT & FIXTURE NO.	STATION	OFFSET
U.S. ROUTE 24		
PP-1	3+83.19	49.11' RT
WASHINGTON STREET		
PP-2	31+97.72	60.52' RT
LIBERTY STREET		
PP-3	12+86.01	63.54' LT
LAFAYETTE STREET		
CONTROLLER	21+26.86	69.12' LT
PP-4	21+95.84	60.63' LT



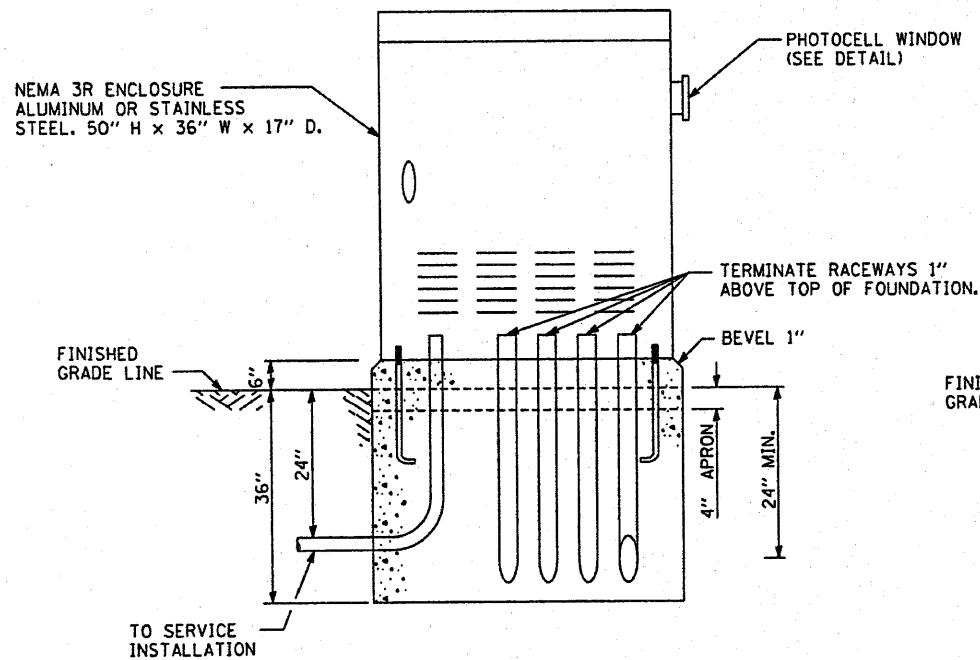
EXPIRES: 11/30/2011

Thomas Memminger
THOMAS MEMMINGER
 ELECTRICAL ENGINEER

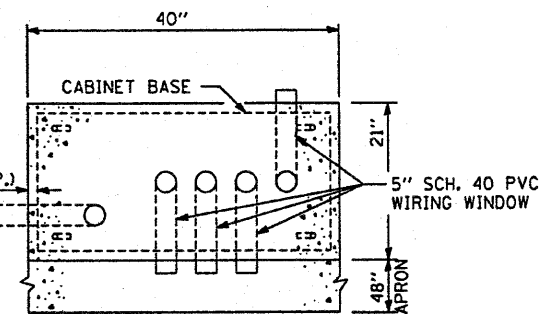
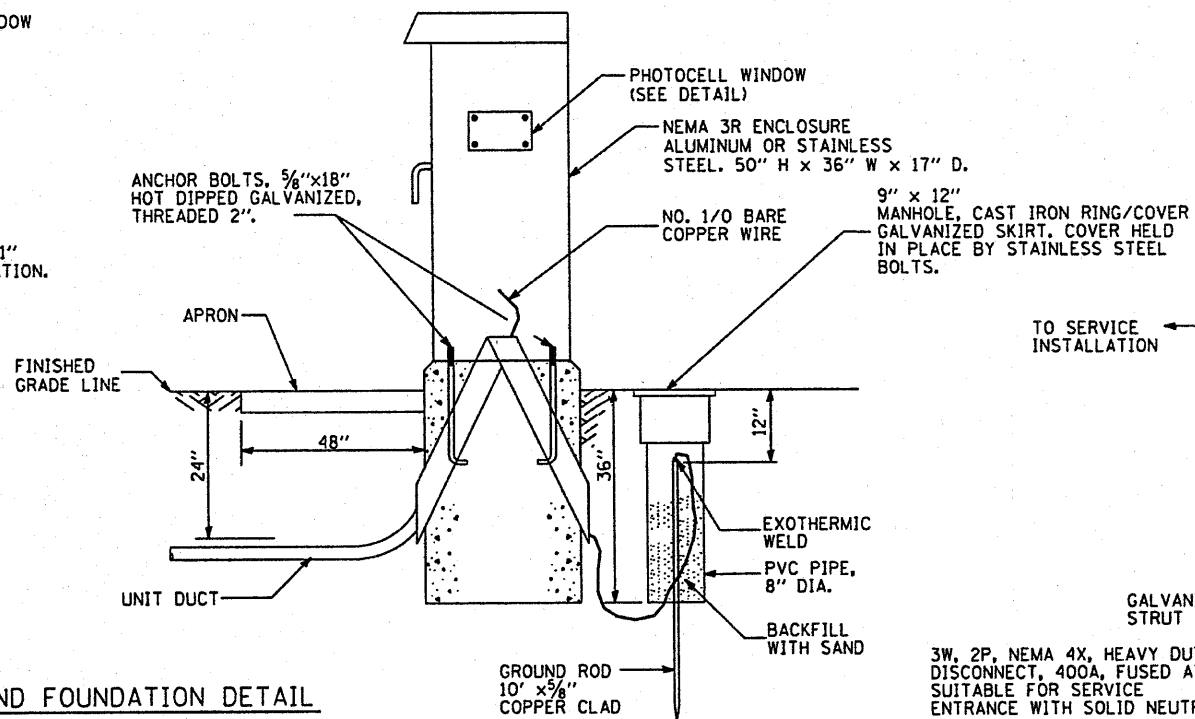
10/20/2010

DATE

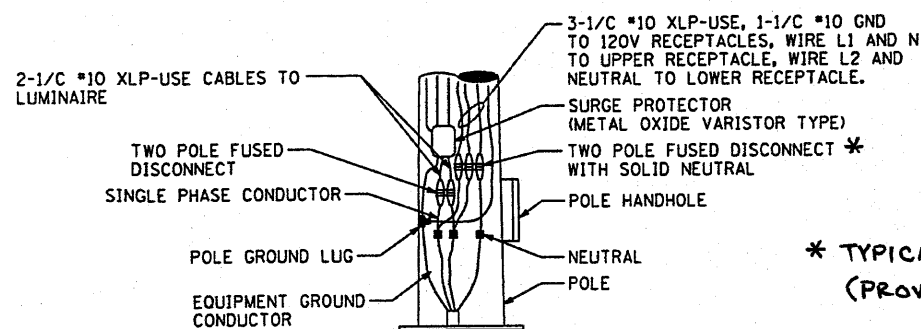
Revised 10-29-10



CONTROL CABINET AND FOUNDATION DETAIL
NOT TO SCALE

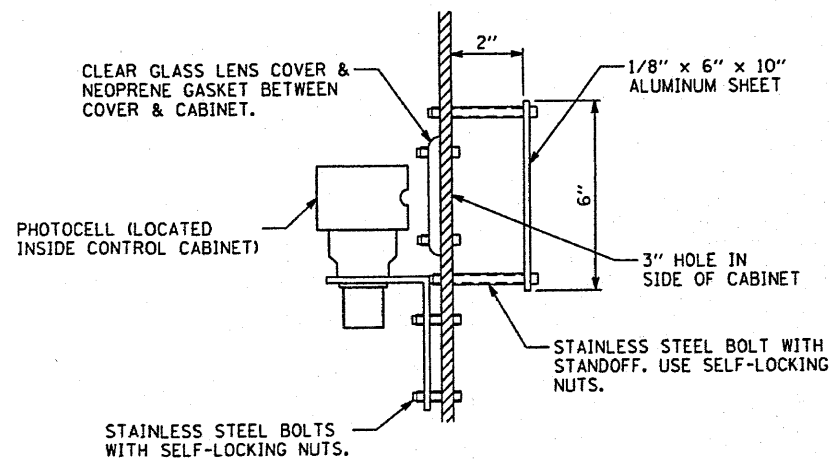


CONTROL CABINET FOUNDATION
TOP VIEW

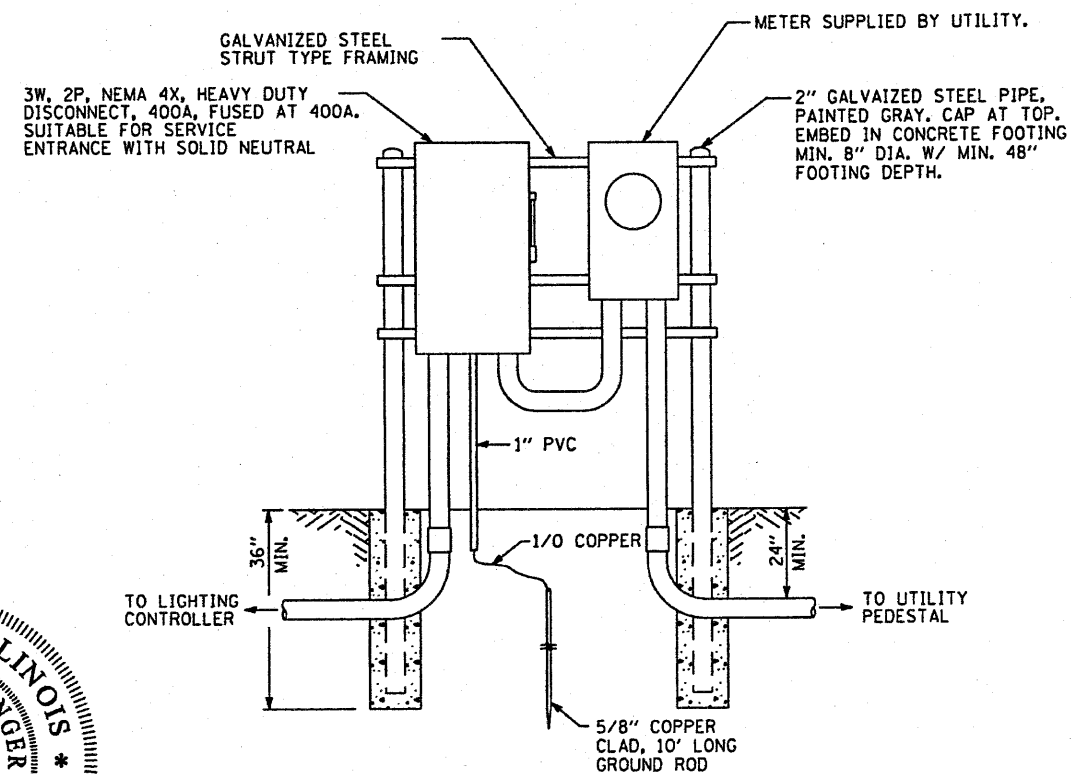


POLE BASE WIRING
NOT TO SCALE

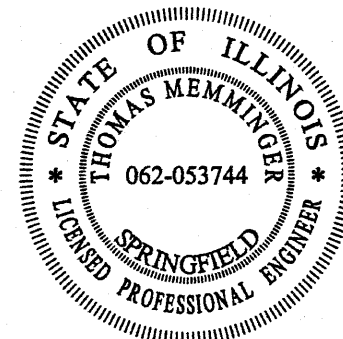
* TYPICAL OF TWO.
(PROVIDE DISCONNECT FOR EACH RECEPTACLE)



PHOTOCELL DETAIL
NOT TO SCALE



ELECTRIC UTILITY SERVICE
NOT TO SCALE



EXPIRES: 11/30/2011

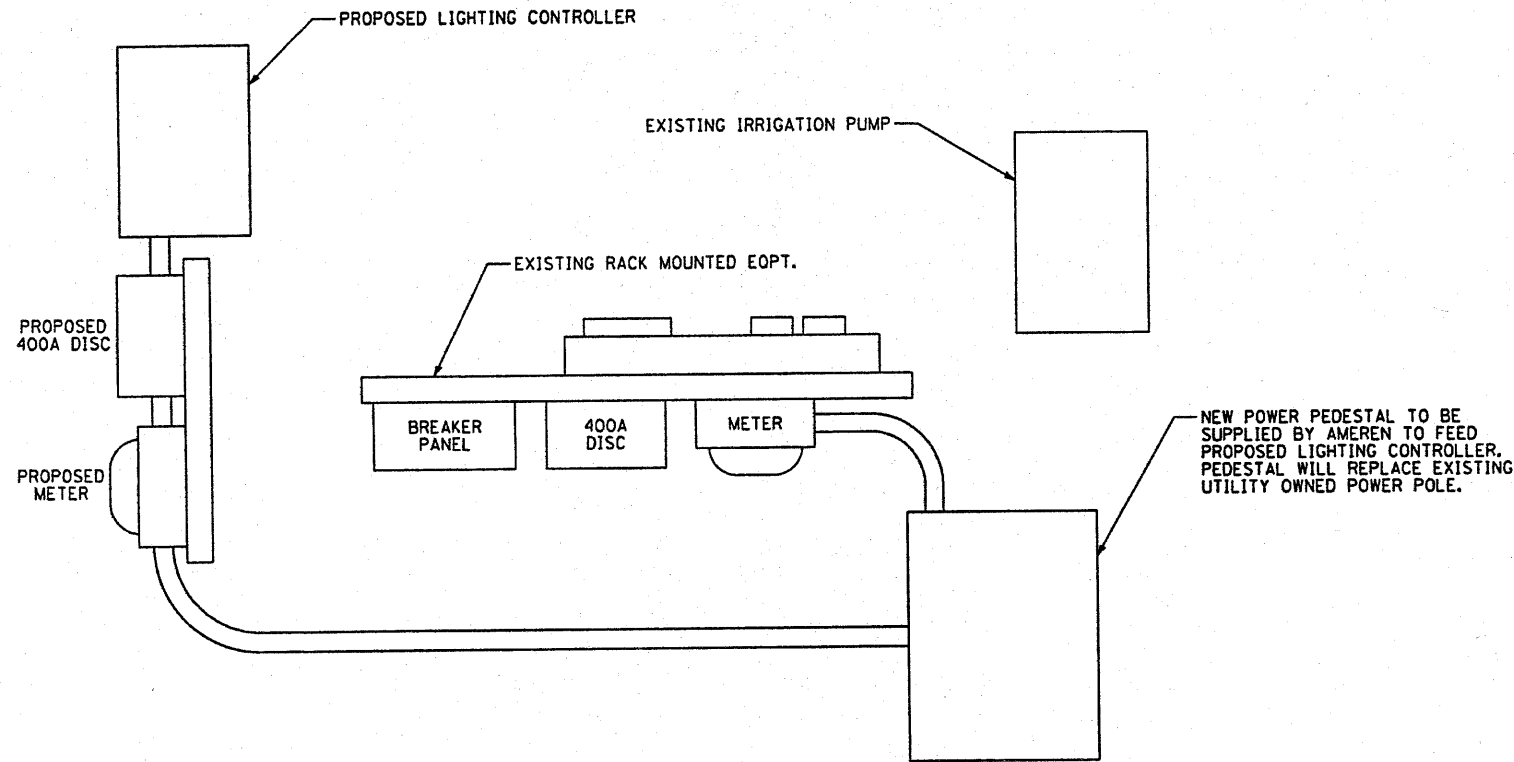
Thomas Memminger
THOMAS MEMMINGER
ELECTRICAL ENGINEER

10/20/2010
DATE

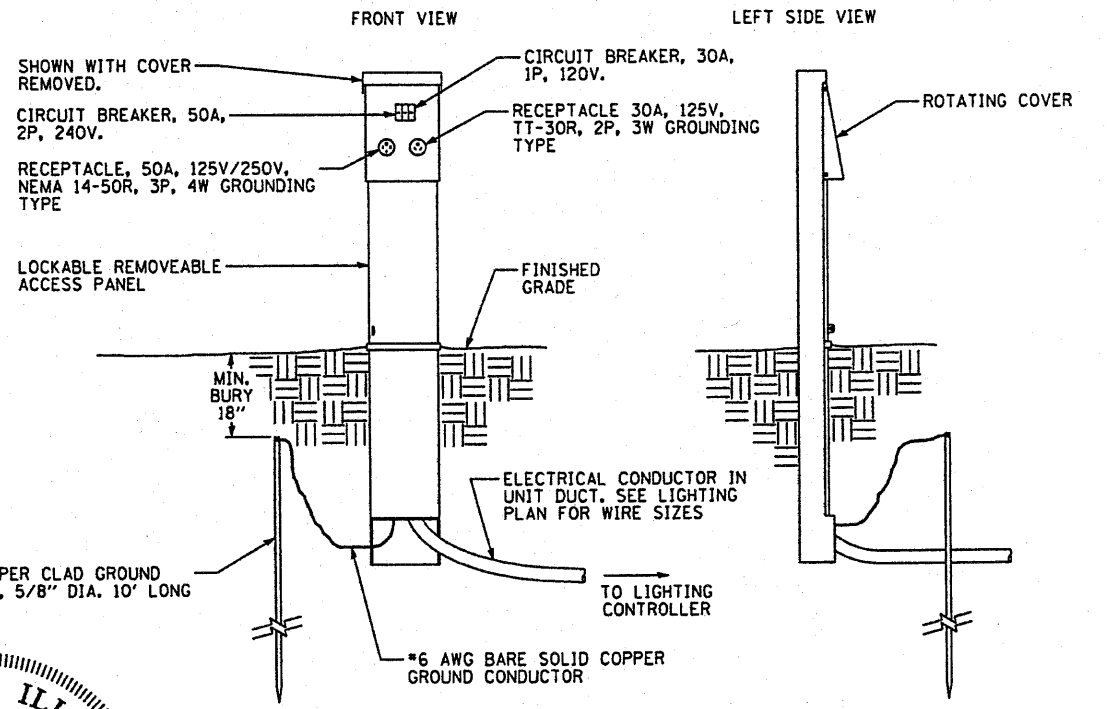
Revised 10-29-10

NOTE: ALL DIMENSIONS ON THIS DRAWING ARE IN INCHES UNLESS OTHERWISE INDICATED.

FILE NAME =	USER NAME = Jim Raubach	DESIGNED - TM	REVISED -	STATE OF ILLINOIS DEPARTMENT OF TRANSPORTATION	MISCELLANEOUS ELECTRICAL DETAILS A				F.A. RTE.	SECTION	COUNTY	TOTAL SHEETS	SHEET NO.	
...038A_Misc Elect Detail Adjg		DRAWN - RAH	REVISED -		SCALE: N.T.S.	SHEET NO. 30	49 SHEETS	STA.	TO STA.	N/A	05-00017-00-FP	SCHUYLER	49	30
		CHECKED - TM	REVISED -						CONTRACT NO.					
		DATE	REVISED -						FED. ROAD DIST. NO. [ILLINOIS] FED. AID PROJECT					



PROPOSED LIGHTING CONTROLLER AND UTILITY PEDESTAL
(N.T.S.)



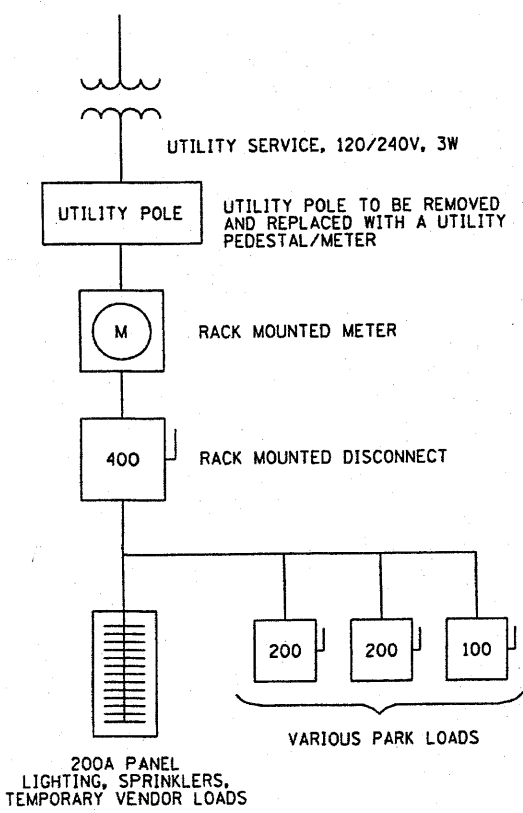
POWER PEDESTAL DETAIL
(TYP. OF 4, SEE LIGHTING LAYOUT PLAN)



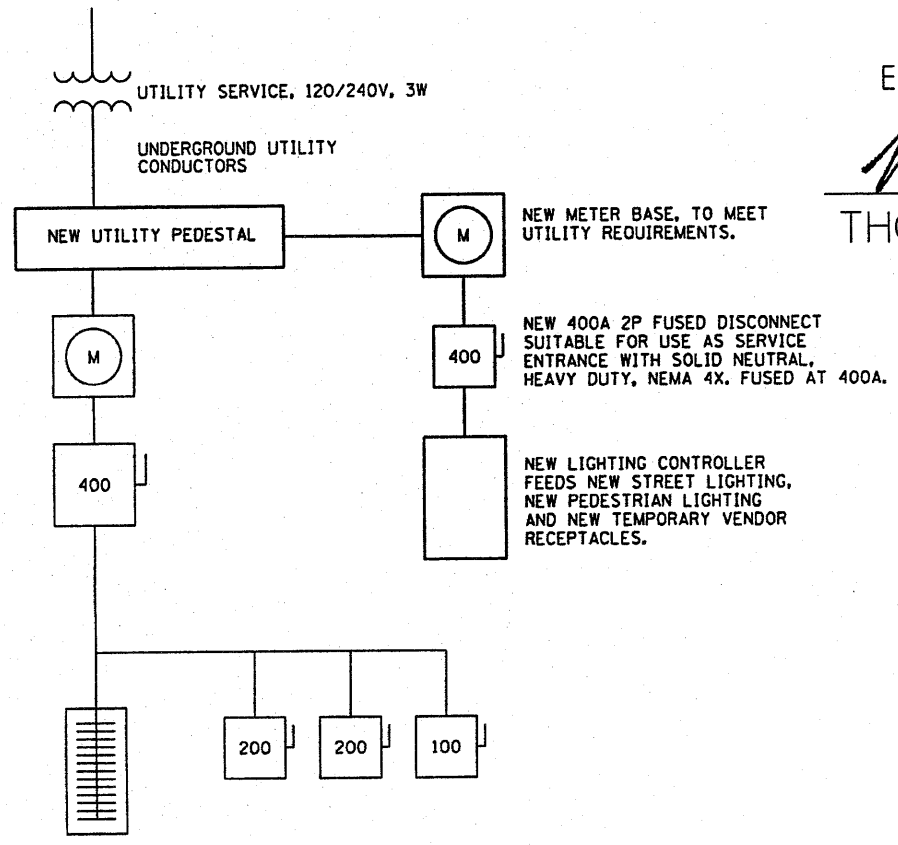
EXPIRES: 11/30/2011

Thomas Memminger
THOMAS MEMMINGER
ELECTRICAL ENGINEER

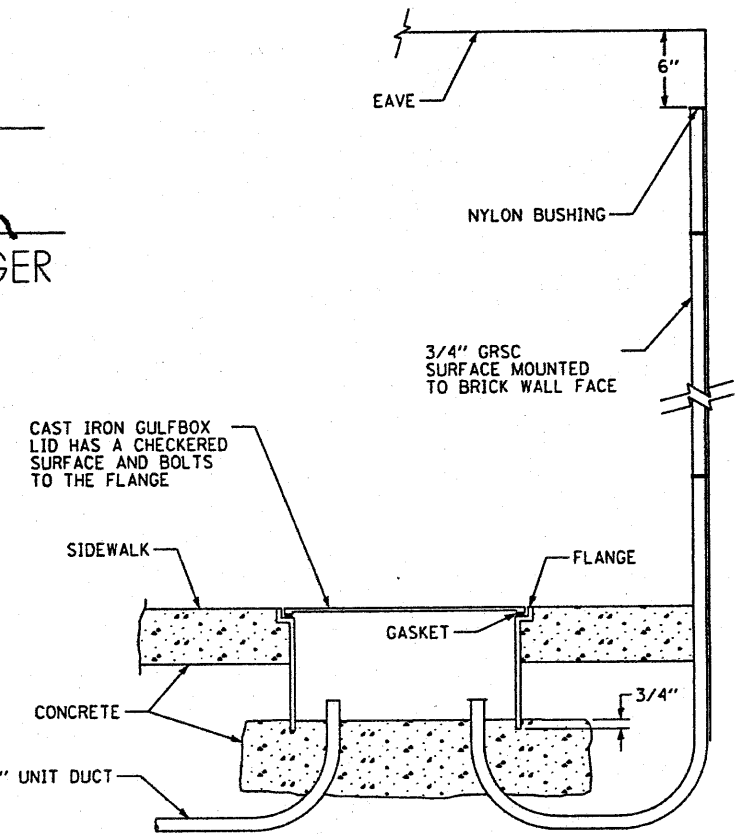
10/20/2010
DATE



EXISTING ONE LINE



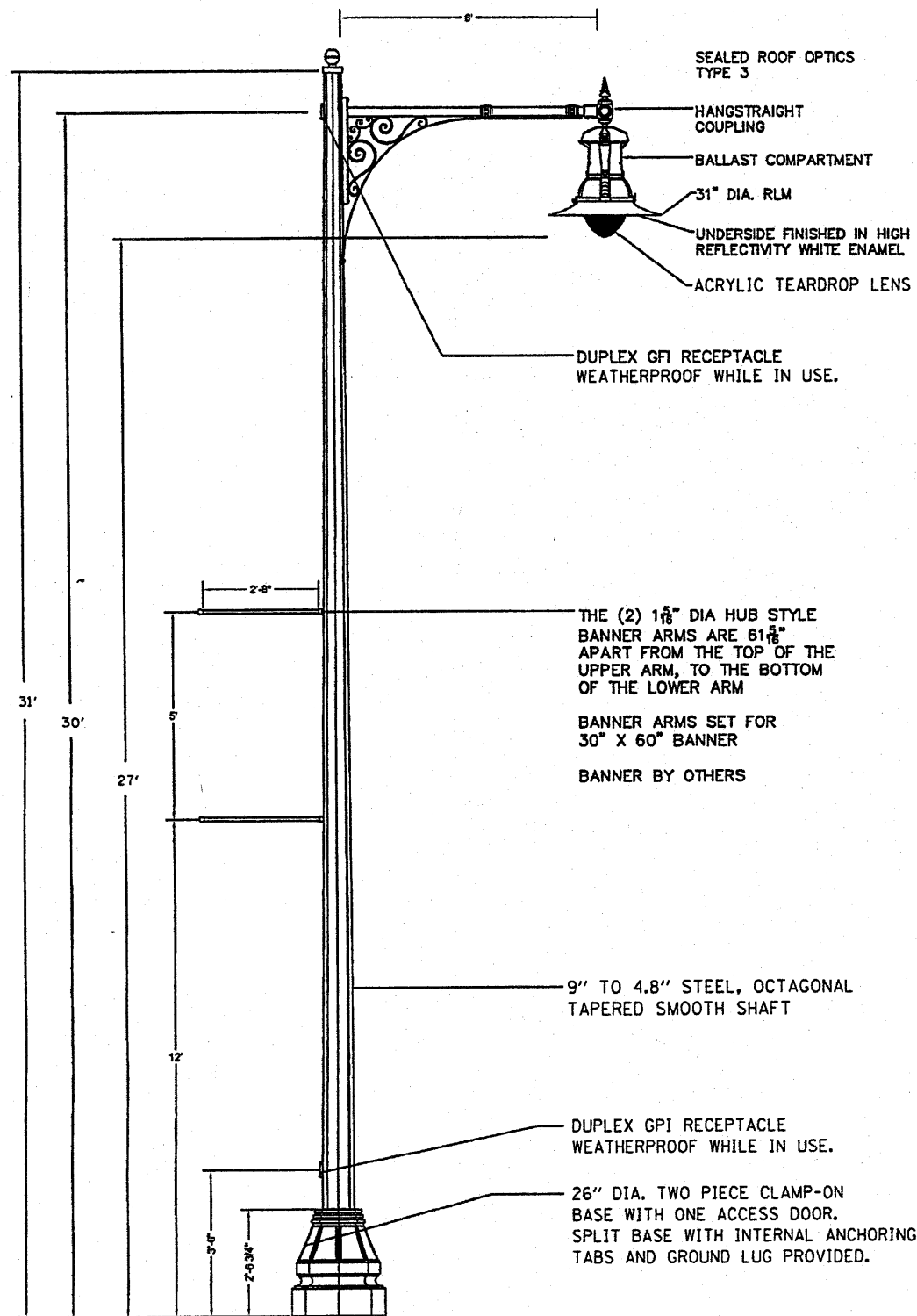
NEW ONE LINE
(NEW EQUIPMENT IN BOLD)



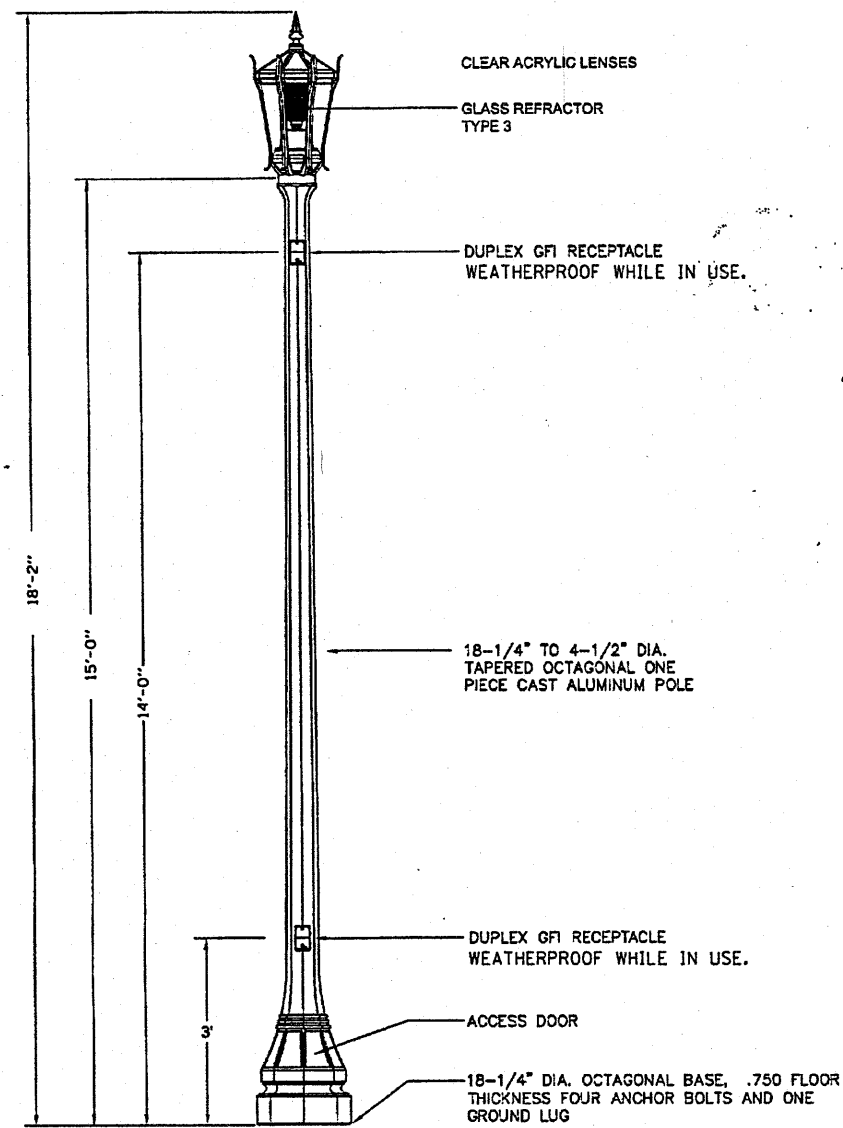
SIDEWALK GULFBOX DETAIL

Revised 10-29-10

FILE NAME * ...0308.Misc Elect Detail B.dgn	USER NAME = Jim Reubach	DESIGNED - TM	REVISED -	STATE OF ILLINOIS DEPARTMENT OF TRANSPORTATION	MISCELLANEOUS ELECTRICAL DETAILS B			F.A. RTE.	SECTION	COUNTY	TOTAL SHEETS	SHEET NO.
	PLOT SCALE = 60.0000' / IN.	CHECKED - TM	REVISED -					N/A	05-00017-00-FP	SCHUYLER	49	30A
	PLOT DATE = 10/27/2010	DATE -	REVISED -					CONTRACT NO.				
								SCALE: N.T.S.	SHEET NO. 30	49 SHEETS	STA. TO STA.	FED. ROAD DIST. NO.



ROADWAY LIGHTING POLE



PEDESTRIAN LIGHTING POLE

NOTES:

1. LIGHTING UNITS SHALL BE MANUFACTURED IN ACCORDANCE WITH THE 2001 AASHTO STANDARD SPECIFICATIONS FOR STRUCTURAL SUPPORTS FOR HIGHWAY SIGN, LUMINARIES AND TRAFFIC SIGNALS DESIGN WIND VELOCITY SHALL BE 90 MPH WITH A MINIMUM DESIGN LIFE OF 50 YEARS.
2. IN ADDITION TO AASHTO CRITERIA, THE POLES SHALL BE DESIGNED FOR THE WORST CASE LOADING CONDITION SET FORTH IN IDOT SPECIFICATIONS 1069.01(0)(1) FOR A DESIGN LUMINAIRE HAVING AN EPA OF 1.6 FT² AND A MAXIMUM WEIGHT OF 75 LBS.
3. ALL RECEPTACLE COVERS NOTED AS WEATHER PROOF SHALL COMPLY WITH NEC ARTICLE 406.9 B1. UNITS SHALL REMAIN RAIN TIGHT WHETHER OR NOT A PLUG AND CORD ARE INSERTED. COVERS SHALL BE EXTRA DEEP, SUNLIGHT RESISTANT AND PADLOCKABLE.



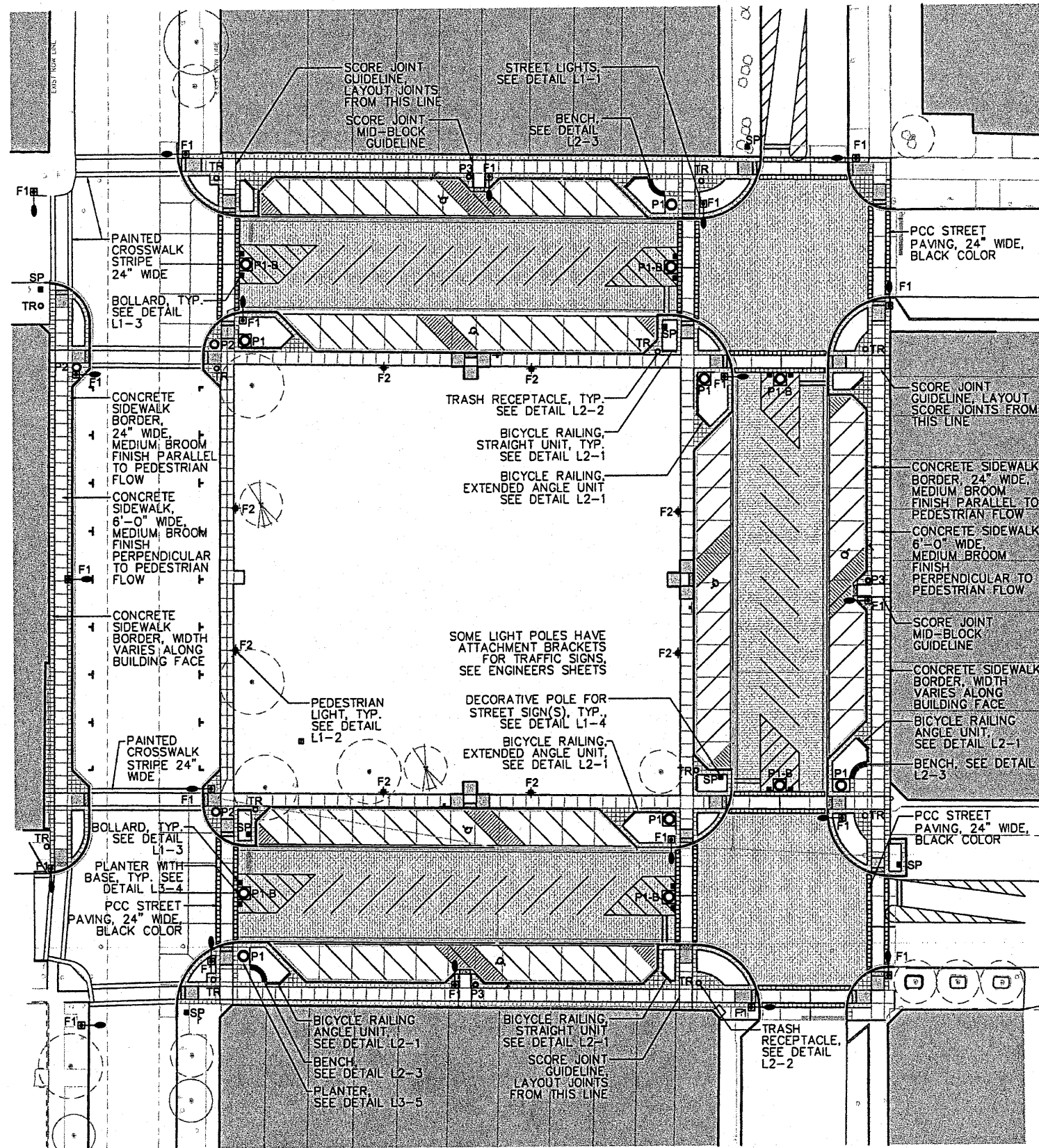
EXPIRES: 11/30/2011

Thomas Memminger
 THOMAS MEMMINGER
 ELECTRICAL ENGINEER

10/20/2010
 DATE

LUMINAIRE SCHEDULE						
SYMBOL	TYPE	LABEL	QTY	DESCRIPTION	LAMP	POLE/BASE
●	F1	STREET LIGHTS	16-250W 4-200W	CAST, ALUMINUM HOUSING CLEAR, ASYMMETRIC ACRYLIC TEARDROP LENS	250 WATT HPS WITH 27,500 INITIAL DELIVERED LUMENS OR 200 WATT HPS WITH 21,400 INITIAL DELIVERED LUMENS. SEE WIRING PLAN, SHEET 29.	CAST ALUMINUM 31' HEIGHT, 8" OCTAGONAL POLE 32" H, 26" W DECORATIVE BASE
◆	F2	PEDESTRIAN LIGHTS	8	CAST, ALUMINUM HOUSING CLEAR, ASYMMETRIC GLASS REFRACTOR	100 WATT HPS WITH 9500 INITIAL DELIVERED LUMENS	CAST ALUMINUM 16'-0" HEIGHT, 5" OCTAGONAL POLE 18" WIDE DECORATIVE BASE

Revised 10-29-10



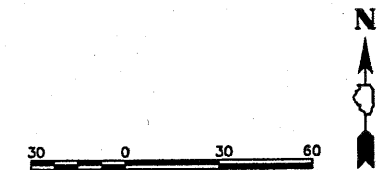
SITE FURNISHINGS AND MATERIALS SCHEDULE

Symbol	Label	Qty	Description	Finish	Color
F1	F1 STREET LIGHTS	20	SEE ELECTRICAL SHEETS FOR LUMINAIRE SCHEDULE AND PRODUCT INFORMATION		
F2	F2 PEDESTRIAN LIGHTS	8	SEE ELECTRICAL SHEETS FOR LUMINAIRE SCHEDULE AND PRODUCT INFORMATION		
SP	DECORATIVE POLE FOR STREET SIGN(S)	7	CAST ALUMINUM, 18" WIDE OCTAGONAL BASE, 12' HEIGHT, WITH STOP SIGN	POWDER COAT	BLACK
	BOLLARD	12	CAST ALUMINUM, 18" WIDE OCTAGONAL BASE, 48" HEIGHT	POWDER COAT	BLACK
	BENCH	3	8' STEEL CURVED BENCH WITH BACK AND CENTER ARMREST	POWDER COAT	BLACK
TR	TRASH RECEPTACLE	12	STEEL, 32 GALLON WITH DUAL TRASH/RECYCLE LID, CUSTOM CAST METAL PLAQUE	POWDER COAT	BLACK
P1-B	PLANTER 60" WITH BASE	6	REINFORCED PRECAST CONCRETE, 60" DIA., 17" HEIGHT	RECYCLED GLASS, WEATHERSTONE FINISH	CHARCOAL GLASS, GRAY MATRIX
P1	PLANTER 60"	6	REINFORCED PRECAST CONCRETE, 60" DIA., 17" HEIGHT	RECYCLED GLASS, WEATHERSTONE FINISH	CHARCOAL GLASS, GRAY MATRIX
P2	PLANTER 48"	3	REINFORCED PRECAST CONCRETE, 48" DIA., 17" HEIGHT	RECYCLED GLASS, WEATHERSTONE FINISH	CHARCOAL GLASS, GRAY MATRIX
P3	PLANTER 30"	3	REINFORCED PRECAST CONCRETE, 30" DIA., 17" HEIGHT	RECYCLED GLASS, WEATHERSTONE FINISH	CHARCOAL GLASS, GRAY MATRIX
	BICYCLE RAILING STRAIGHT UNIT	6	STEEL, CUSTOM DESIGN	POWDER COAT	BLACK
	BICYCLE RAILING ANGLE UNIT	3	STEEL, CUSTOM DESIGN	POWDER COAT	BLACK
	BICYCLE RAILING EXTENDED ANGLE UNIT	3	STEEL, CUSTOM DESIGN	POWDER COAT	BLACK

CONCRETE SCORING AND FINISHING:

- All scoring to be tooled, saw cutting not permissible.
- Score concrete sidewalk 6' wide by 6' long at crosswalks and mid-block ramps. Start 6' grid pattern from corner crosswalks. Initial score to be 24" in line with sidewalk border. Subsequent scoring to be 6' O.C. until to approximately 20' of mid-block ramp. Distance between joint and mid-block ramp to be equally spaced at approximately 6' O.C. Joints between this distance should be spaced equally (approximately 6' O.C.).
- 6'x6' scored concrete sidewalk to be medium-broom finish perpendicular to pedestrian traffic flow.
- 2'x2' scored concrete border to be medium-broom finish parallel to pedestrian traffic flow.
- Expansion joints to be located at corner crosswalk locations. Subsequent expansion joints to be 30' O.C.

Revised 10-29-10



FILE NAME = \$FILES	USER NAME = \$USER\$	DESIGNED -- KM	REVISED 2-12-10
		DRAWN -- NFB	REVISED 8-11-10
		CHECKED -- KM	REVISED 10-20-10
		DATE -- 11-23-09	REVISED --

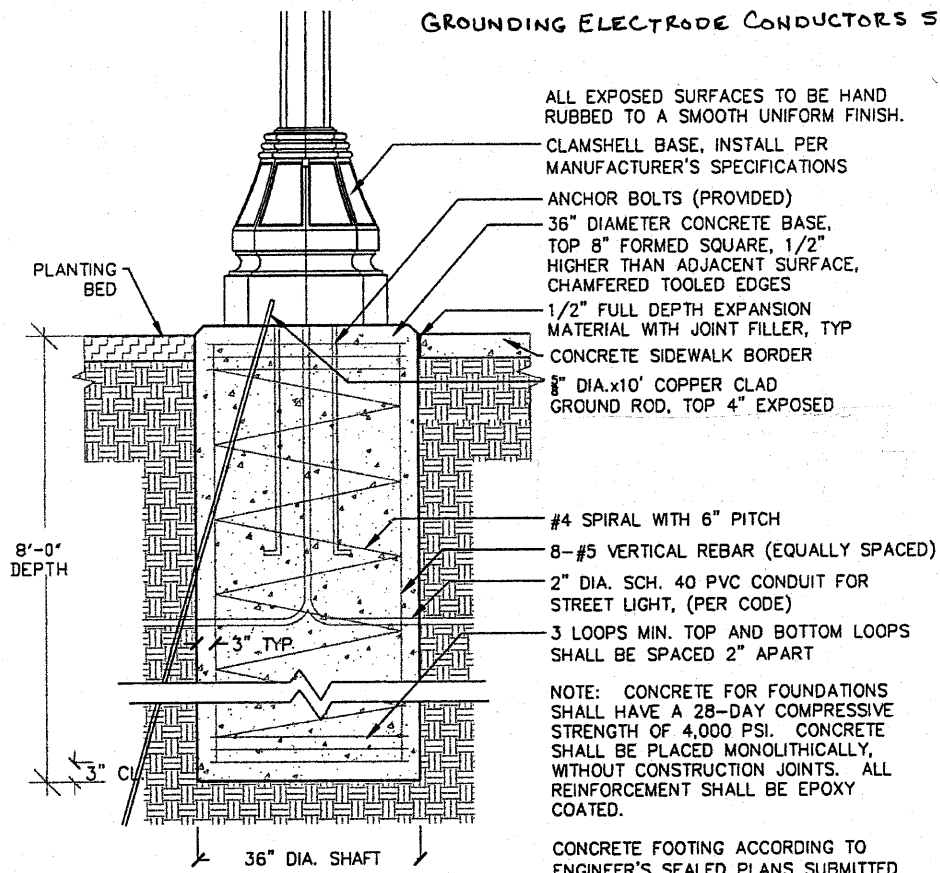
STATE OF ILLINOIS
DEPARTMENT OF TRANSPORTATION

CITY OF RUSHVILLE DOWNTOWN BRICK ST. SQUARE RESTORATION PLAN
MATERIAL LAYOUT PLAN

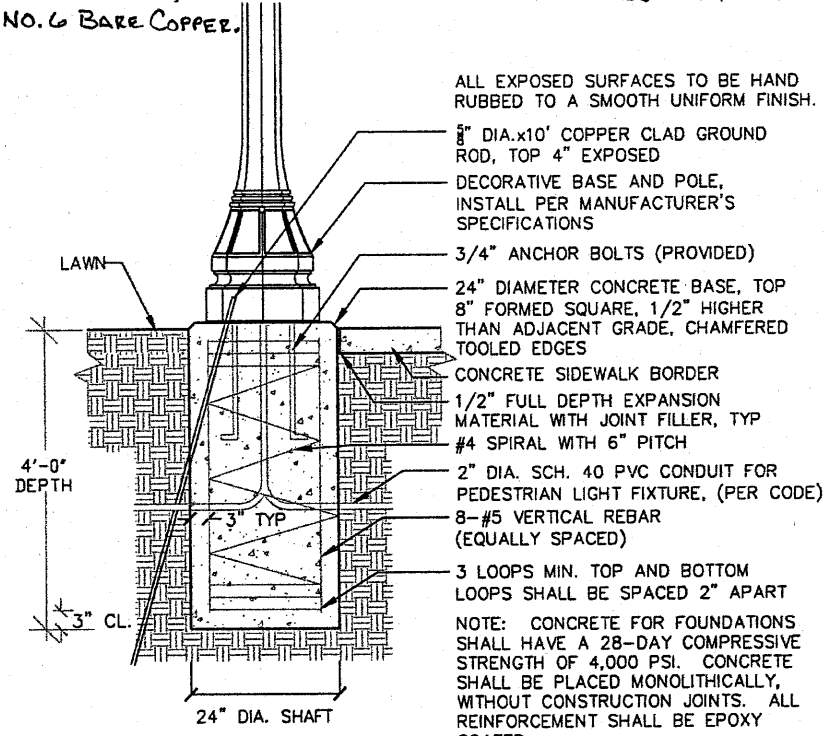
SCALE: 1"=20' SHEET NO. 37 OF 49 SHEETS STA. _____ TO STA. _____

F.A. RTE. N/A	SECTION 05-00017-00-FP	COUNTY SCHUYLER	TOTAL SHEETS 49	SHEET NO. 37
CONTRACT NO. _____				
FED. ROAD DIST. NO. _____ ILLINOIS FED. AID PROJECT				

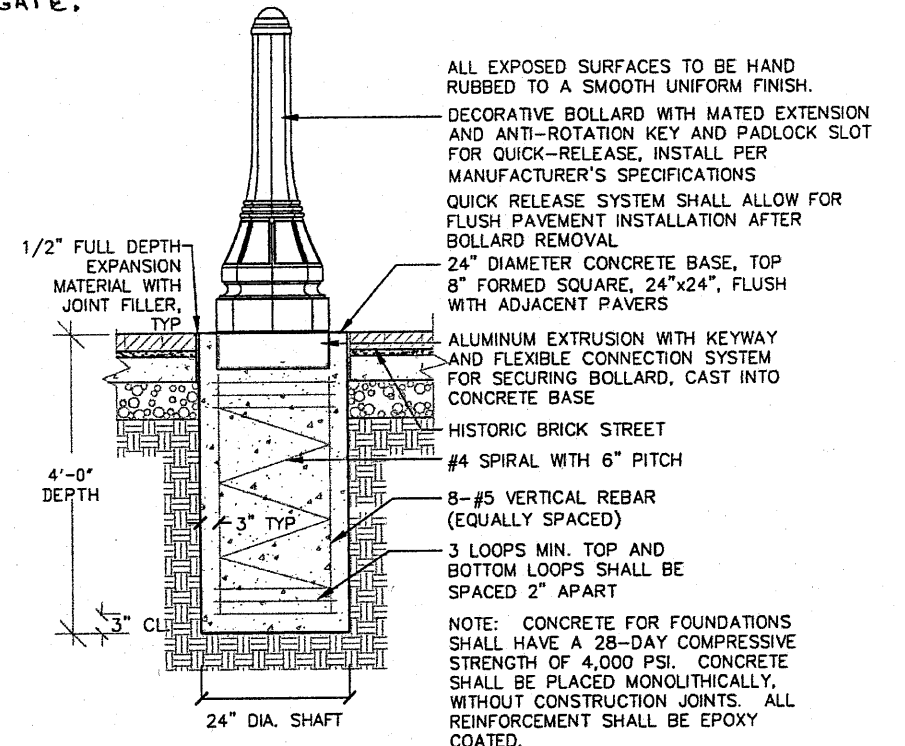
NOTE: GROUNDING ELECTRODES SHALL BE INSTALLED INSIDE A 5" DIA., PVC SCH. 40 WIRING WINDOW FILLED WITH FINE AGGREGATE.
GROUNDING ELECTRODE CONDUCTORS SHALL BE NO. 6 BARE COPPER.



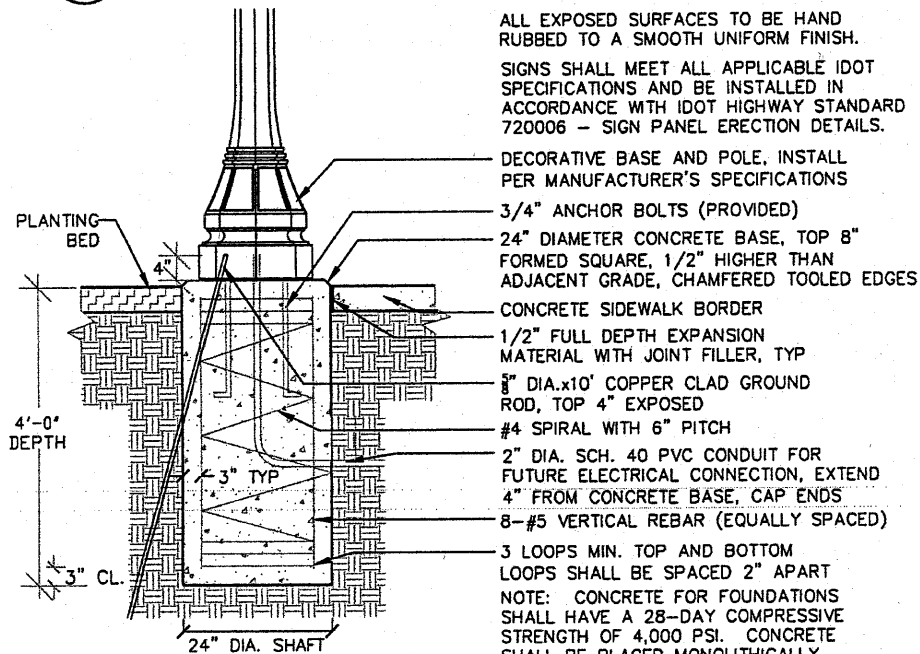
L-1-1 STREET LIGHTS
NOT TO SCALE



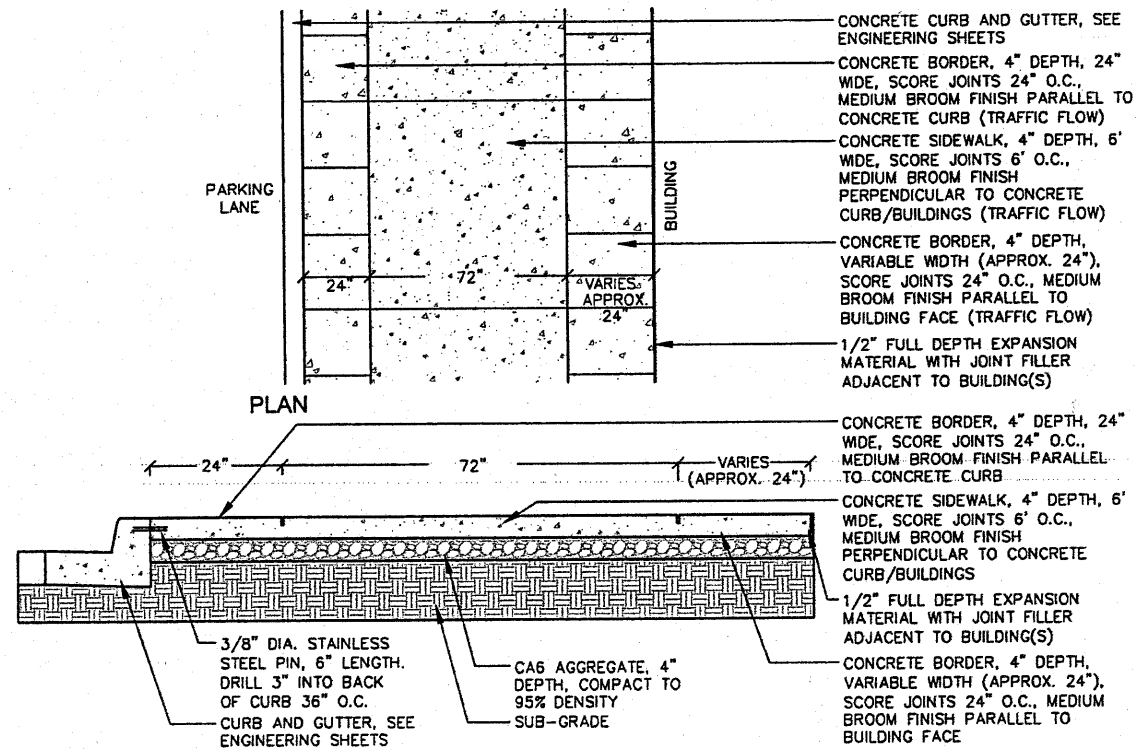
L-1-2 PEDESTRIAN LIGHTS
NOT TO SCALE



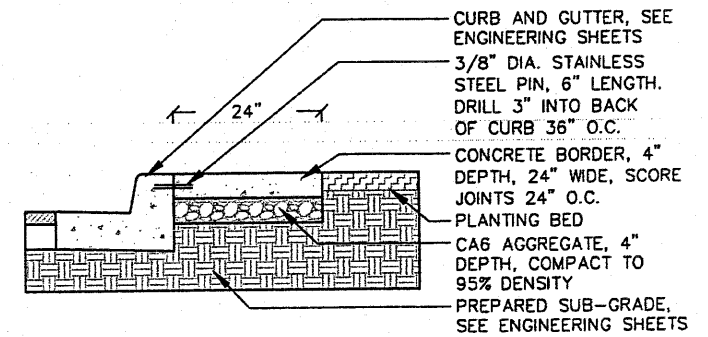
L-1-3 BOLLARDS, QUICK RELEASE
NOT TO SCALE



L-1-4 DECORATIVE BASE AND POLE FOR STREET SIGNS
NOT TO SCALE



L-1-5 CONCRETE SIDEWALK AND BORDERS
NOT TO SCALE



L-1-6 24" CONCRETE BORDER
NOT TO SCALE

Massie & Massie Associates

1210 S. 5th Street, Springfield, IL 62703 217-544-3210
421 West Main Street, Decatur, IL 62522 217-424-0792

Revised 10-29-10

FILE NAME -	USER NAME - \$USER\$	DESIGNED - KM	REVISED 2-12-10
\$FILES		DRAWN - NFB	REVISED 10-20-10
	PLOT SCALE = 1" = 20'	CHECKED - KM	REVISED -
	PLOT DATE = 11-23-09	DATE = 11-23-09	REVISED -

STATE OF ILLINOIS
DEPARTMENT OF TRANSPORTATION

CITY OF RUSHVILLE DOWNTOWN BRICK ST. SQUARE RESTORATION PLAN	F.A. RTE. N/A	SECTION 05-00017-00-PP	COUNTY SCHUYLER	TOTAL SHEETS 49	SHEET NO. 39
SCALE: 1"=20'	SHEET NO. 39 OF 49 SHEETS	STA. _____ TO STA. _____	CONTRACT NO. _____		
FED. ROAD DIST. NO. _____ ILLINOIS FED. AID PROJECT					