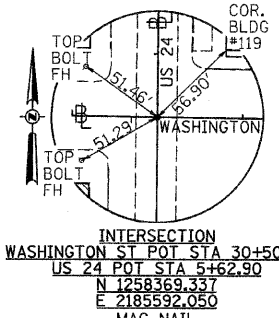
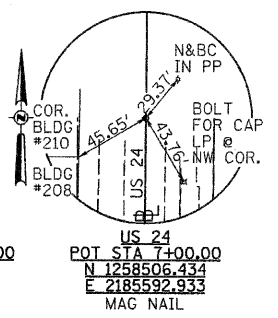


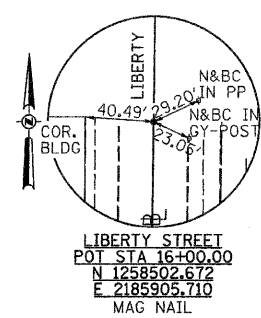
WASHINGTON STREET
 POT STA 30+00.00
 N 1258370.047
 E 2185542.054
 MAG NAIL



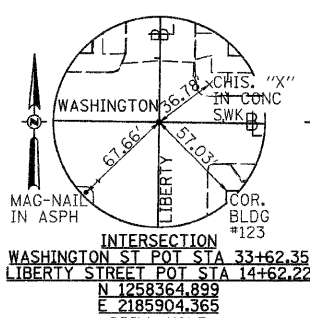
INTERSECTION
 WASHINGTON ST POT STA 30+50.00
 US 24 POT STA 5+62.90
 N 1258369.337
 E 2185592.050
 MAG NAIL



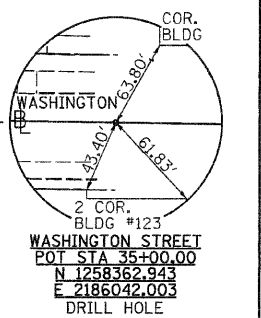
US 24
 POT STA 7+00.00
 N 1258506.434
 E 2185592.933
 MAG NAIL
 STA 30+50.00 (WASHINGTON ST.) =
 STA 5+62.90 (US 24)
 N 1258369.337
 E 2185592.050



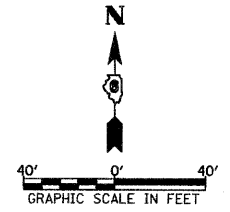
LIBERTY STREET
 POT STA 16+00.00
 N 1258502.672
 E 2185905.710
 MAG NAIL



INTERSECTION
 WASHINGTON ST POT STA 33+62.35
 LIBERTY STREET POT STA 14+62.22
 N 1258364.899
 E 2185904.365
 DRILL HOLE



WASHINGTON STREET
 POT STA 35+00.00
 N 1258362.943
 E 2186042.003
 DRILL HOLE



WASHINGTON STREET
 POT STA 30+00.00
 N 1258370.047
 E 2185542.054

LIBERTY STREET
 POT STA 16+00.00
 N 1258502.672
 E 2185905.710

STA 33+62.35 (WASHINGTON ST.) =
 STA 14+62.22 (LIBERTY ST.) =
 N 1258364.899
 E 2185904.365

WASHINGTON STREET
 POT STA 35+00.00
 N 1258362.943
 E 2186042.003

SURVEY & WASHINGTON STREET

BENCH MARK LIST

- BM#1 CHISELED "□" ON SOUTHEAST CORNER OF CONCRETE LIGHT POLE BASE AT NORTHWEST QUADRANT OF LAFAYETTE & LIBERTY STREETS, NORTH LIGHT POLE. ELEVATION = 675.81
- BM#2 CHISELED "□" ON NORTHEAST CORNER OF CONCRETE LIGHT POLE BASE AT SOUTHWEST QUADRANT OF WASHINGTON & LIBERTY STREETS, WEST LIGHT POLE. ELEVATION = 677.24
- BM#3 CHISELED "X" ON E.N.E. FLANGE BOLT ON FIRE HYDRANT AT SOUTHWEST QUADRANT OF LAFAYETTE & CONGRESS STREETS (SAME AS COURT HO.) ELEVATION = 676.41
- BM#4 CHISELED "X" ON BOTTOM E.N.E. FLANGE BOLT ON FIRE HYDRANT AT SOUTHWEST QUADRANT OF SOUTH LIBERTY & EAST MADISON. ELEVATION = 666.15
- BM#5 CHISELED "X" ON BOTTOM E.N.E. FLANGE BOLT ON FIRE HYDRANT AT NORTHEAST QUADRANT OF SOUTH LIBERTY & EAST CLINTON. ELEVATION = 662.61
- BM#18 CHISELED "X" ON BOTTOM N.E. FLANGE BOLT ON FIRE HYDRANT ±25' EAST OF C, BETWEEN ENTRANCE TO CORN TOP ± 0.5 MILES NORTH OF US 67 "NAV088" ELEVATION = 649.87

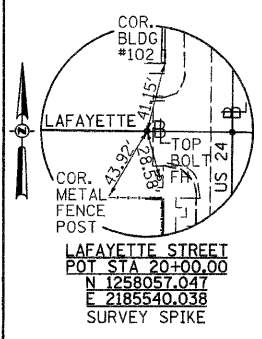
STA 20+50.00 (LAFAYETTE ST.) =
 STA 2+50.00 (US 24)
 N 1258056.445
 E 2185590.035

LAFAYETTE STREET
 POT STA 20+00.00
 N 1258057.047
 E 2185540.038

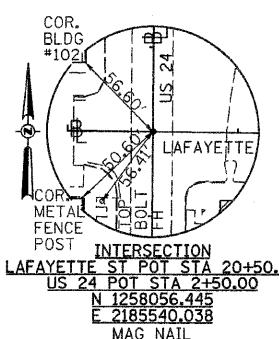
STA 23+61.31 (LAFAYETTE ST.) =
 STA 11+50.00 (LIBERTY ST.) =
 N 1258052.694
 E 2185901.317

LAFAYETTE STREET
 POT STA 25+00.00
 N 1258051.023
 E 2186040.002

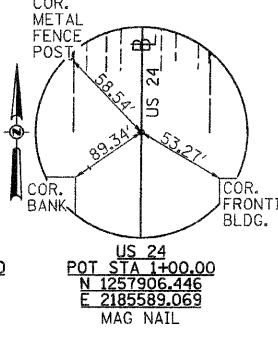
SURVEY & LAFAYETTE STREET



LAFAYETTE STREET
 POT STA 20+00.00
 N 1258057.047
 E 2185540.038
 SURVEY SPIKE

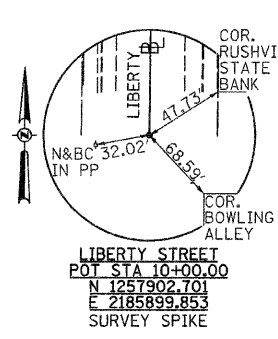


INTERSECTION
 LAFAYETTE ST POT STA 20+50.00
 US 24 POT STA 2+50.00
 N 1258056.445
 E 2185540.038
 MAG NAIL

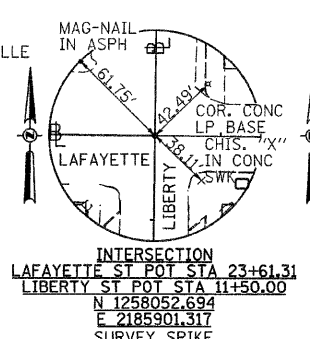


US 24
 POT STA 1+00.00
 N 1257906.446
 E 2185589.069
 MAG NAIL

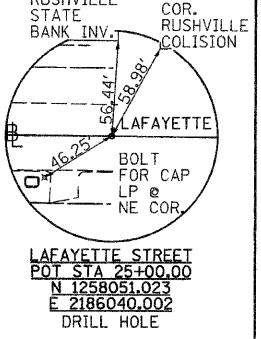
US 24 STREET
 POT STA 1+00.00
 N 1257906.446
 E 2185589.069



LIBERTY STREET
 POT STA 10+00.00
 N 1257902.701
 E 2185899.853
 SURVEY SPIKE



INTERSECTION
 LAFAYETTE ST POT STA 23+61.31
 LIBERTY ST POT STA 11+50.00
 N 1258052.694
 E 2185901.317
 SURVEY SPIKE



LAFAYETTE STREET
 POT STA 25+00.00
 N 1258051.023
 E 2186040.002
 DRILL HOLE

FILE NAME = v:\transportation\2248\2248a001.dgn	USER NAME = jolson	DESIGNED - JRB	REVISED -
		DRAWN - RLR	REVISED -
		CHECKED - JRB	REVISED -
		DATE - 2/12/2010	REVISED -

**STATE OF ILLINOIS
 DEPARTMENT OF TRANSPORTATION**

**CITY OF RUSHVILLE DOWNTOWN SQUARE BRICK STREET RECONSTRUCTION
 ALIGNMENTS, TIES, AND BENCHMARKS**

SCALE: 1" = 40' SHEET NO. OF SHEETS STA. TO STA.

F.A. RTE. N/A	SECTION 05-00017-00-FP	COUNTY SCHUYLER	TOTAL SHEETS 49	SHEET NO. 11
FED. ROAD DIST. NO.		[ILLINOIS] FED. AID PROJECT		

CONTRACT NO. 93541