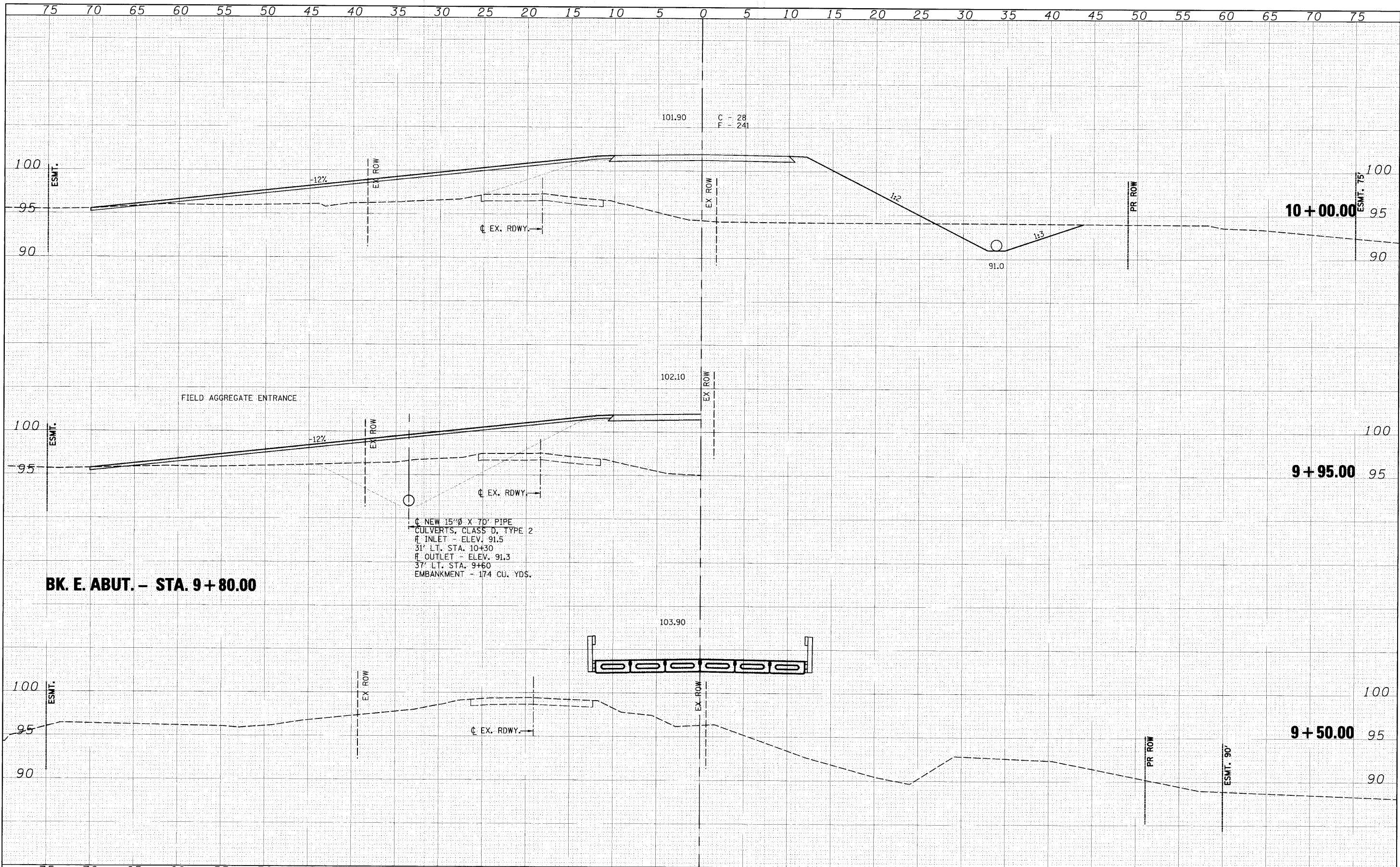


DATE	BY
DESIGNED	DRAWN
CHECKED	REVISIONS
DATE	NO.

DATE	BY
DESIGNED	DRAWN
CHECKED	REVISIONS
DATE	NO.



BK. E. ABUT. - STA. 9+80.00

NEW 15" X 70' PIPE
 CULVERTS, CLASS D, TYPE 2
 R INLET - ELEV. 91.5
 31' LT. STA. 10+30
 R OUTLET - ELEV. 91.3
 37' LT. STA. 9+60
 EMBANKMENT - 174 CU. YDS.

FILE NAME	USER NAME	DESIGNED	REVISIONS	Allen Henderson & Associates, Inc. Civil and Structural Engineers Springfield, IL 62703 Phone: (217)544-8033 IL Design Firm No. 184-001907	CROSS SECTIONS SCALE: 1" = 5' SHEET NO. 5 OF 7 SHEETS STA. 9+50.00 TO STA. 10+00.00		T.R. RTE.	SECTION	COUNTY	TOTAL SHEET NO.
FILE NO.	PLOT SCALE	DRAWN	REVISIONS				303	09-11118-00-BR	SHELBY	22
	PLOT DATE	CHECKED	REVISIONS				CONTRACT NO. 95629			
		DATE	REVISIONS				ILLINOIS FED. AID PROJECT			