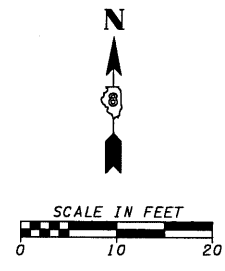


PROPERTY OWNER:
JAMES A. NORRENBERNS AND SUSAN A. NORRENBERNS

PROP. CURVEPSW_C2
PI STA. =12+67.97
Δ =5° 16' 17" (RT)
D =10° 25' 03"
R =550.00'
T =25.32'
L =50.60'
E =0.58'
P.C. STA =12+42.65
P.T. STA =12+93.25

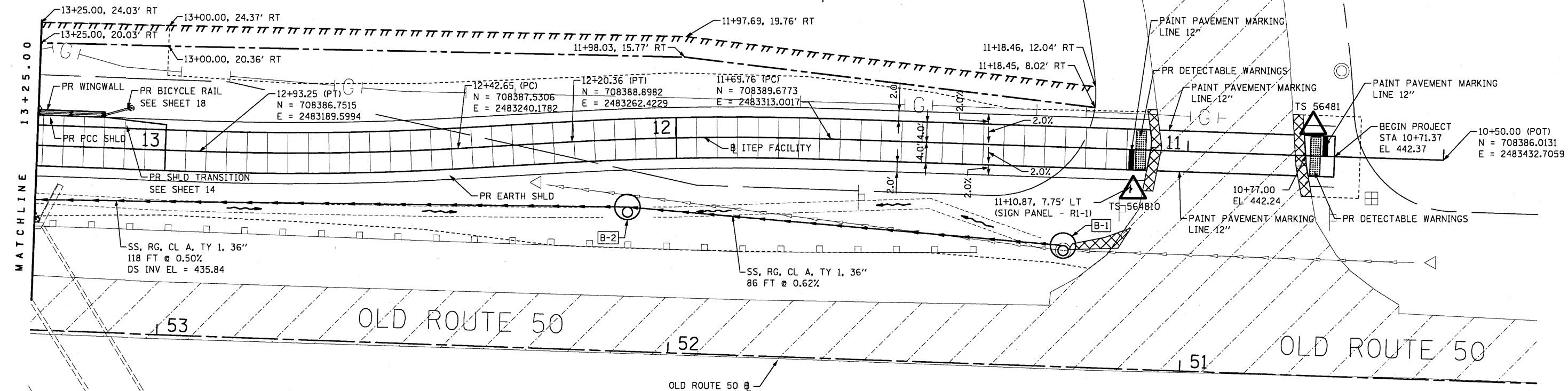
PROP. CURVEPSW_C1
PI STA. =11+95.08
Δ =5° 16' 17" (LT)
D =10° 25' 03"
R =550.00'
T =25.32'
L =50.60'
E =0.58'
P.C. STA =11+69.76
P.T. STA =12+20.36

- CONC GUTTER REM & REP
- EX PCC OR HMA PAVEMENT
- PR TEMP CONST EASEMENT
- PR ROW
- EX ROW
- APPROX CONST LIMITS
- TRANSVERSE CONTRACTION JOINT
- TRANSVERSE EXPANSION JOINT



| | |
|-----------|--|
| DATE | |
| BY | |
| SURVEYED | |
| PLANNED | |
| NOTED | |
| STRUCTURE | |
| NOTATIONS | |
| CHKD | |

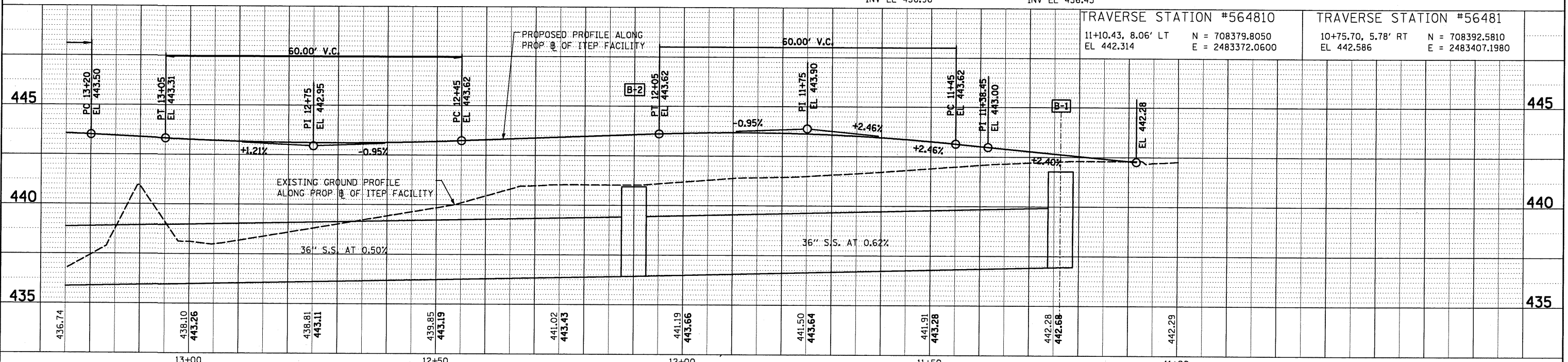
| | |
|-----------|--|
| DATE | |
| BY | |
| SURVEYED | |
| PLANNED | |
| NOTED | |
| STRUCTURE | |
| NOTATIONS | |
| CHKD | |



B-1
11+23.70, 19.30' LT
RESTRICTED DEPTH MH
5' DIA W/ TY 1 FR, OPEN LID
TOP EL 441.79
INV EL 436.96

B-2
12+10.00, 13.27' LT
RESTRICTED DEPTH MH
5' DIA W/ TY 8 GR
TOP EL 440.94
INV EL 436.43

| TRAVERSE STATION #564810 | | TRAVERSE STATION #56481 | |
|--------------------------|------------------|-------------------------|------------------|
| 11+10.43, 8.06' LT | N = 708379.8050 | 10+75.70, 5.78' RT | N = 708392.5810 |
| EL 442.314 | E = 2483372.0600 | EL 442.586 | E = 2483407.1980 |



| | | | | | | | | | | |
|-----------------------|--------------------|------------------|-----------|---|---|--------------------|-------------------------|--------------------------------|---|-----------|
| FILE NAME = | USER NAME = #USER# | DESIGNED - KJS | REVISED - | STATE OF ILLINOIS DEPARTMENT OF TRANSPORTATION | BREESE ITEP SHARED-USE FACILITY PLAN AND PROFILE | F.A. RTE. | SECTION | COUNTY | TOTAL SHEETS | SHEET NO. |
| #FILE# | | DRAWN - KOJ | REVISED - | | | 06-00016-00-BT | CLINTON | 25 | 7 | |
| PLOT SCALE = #SCALE# | | CHECKED - SAR | REVISED - | | | CONTRACT NO. 97416 | | | | |
| PLOT DATE = 1/12/2010 | | DATE - 1/11/2010 | REVISED - | SCALE: 1" = 10' | | | SHEET NO. 1 OF 3 SHEETS | STA. 11+07.23 TO STA. 13+25.00 | FED. ROAD DIST. NO. ILLINOIS FED. AID PROJECT | |