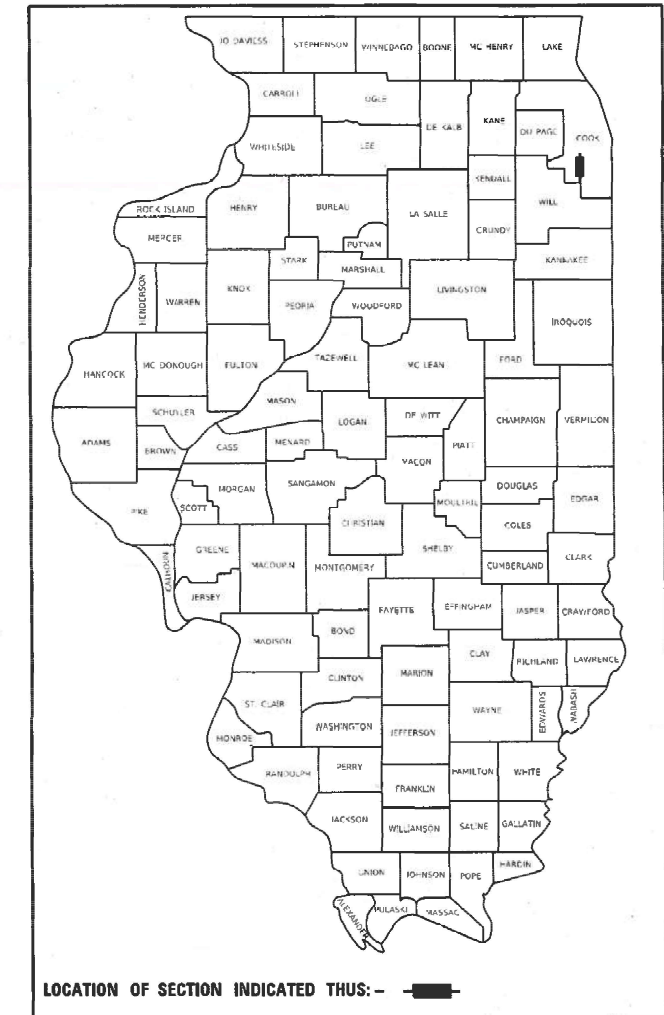


STATE OF ILLINOIS
DEPARTMENT OF TRANSPORTATION

F.A.P. RTE.	SECTION	COUNTY	TOTAL SHEETS	SHEET NO.
330	2021-096-BP	COOK	29	1
		ILLINOIS	CONTRACT NO. 62P24	

D-91-185-21



FOR INDEX OF SHEETS, SEE SHEET NO. 2

THIS PROJECT IS LOCATED IN UNINCORPORATED COOK COUNTY

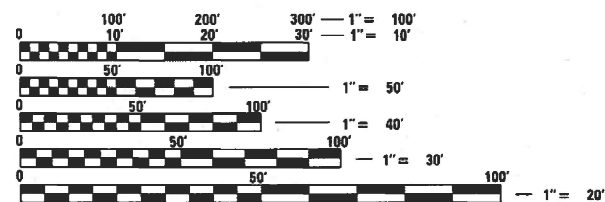
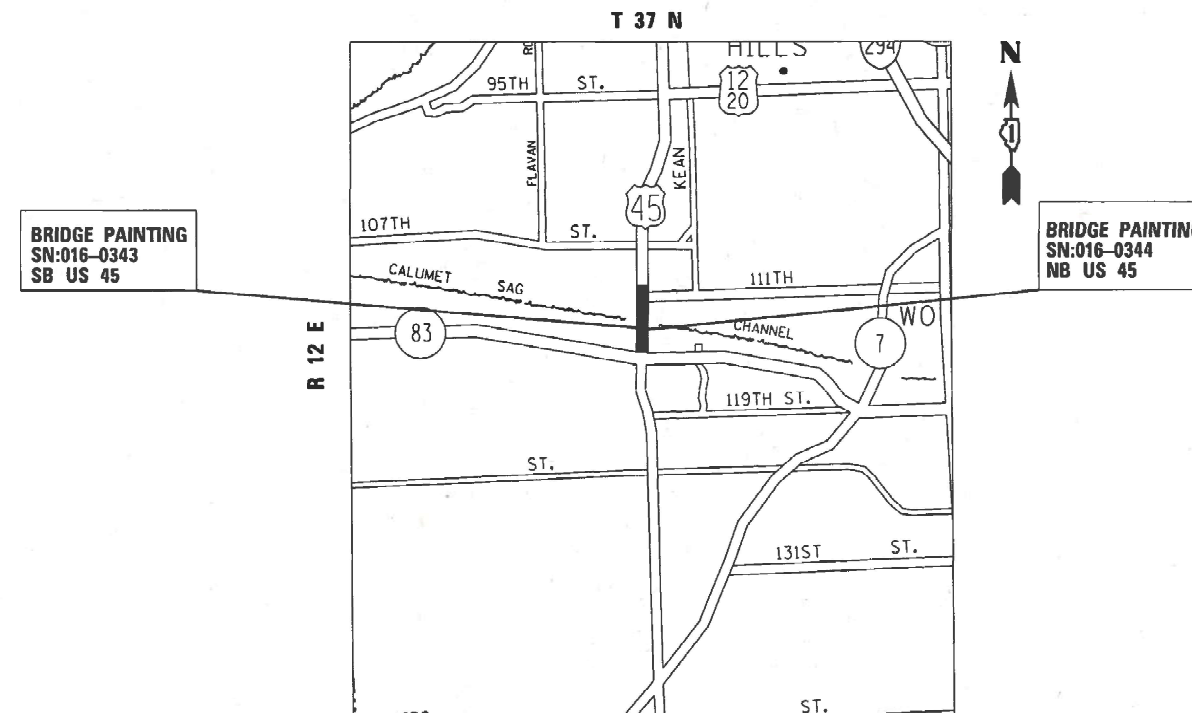
PROPOSED HIGHWAY PLANS

TRAFFIC DATA

US ROUTE 45:
ADT(2019) = 36,900
POSTED SPEED LIMIT = 45MPH
FUNCTIONAL CLASS = OTHER PRINCIPAL ARTERIAL

FAP ROUTE 330: US ROUTE 45(LAGRANGE RD)
OVER CAL SAG CHANNEL
SECTION 2021-096-BP
PROJECT: NHPP-GF2X(964)
BRIDGE PAINTING
COOK COUNTY

C-91-222-21



FULL SIZE PLANS HAVE BEEN PREPARED USING STANDARD ENGINEERING SCALES. REDUCED SIZED PLANS WILL NOT CONFORM TO STANDARD SCALES. IN MAKING MEASUREMENTS ON REDUCED PLANS, THE ABOVE SCALES MAY BE USED.

J.U.L.I.E.
JOINT UTILITY LOCATION INFORMATION FOR EXCAVATORS
1-800-892-0123
OR 811

PROJECT ENGINEER: LUKASZ POCIECHA (847) 705-4420

PROJECT MANAGER: FAWAD AQUEEL (847) 705-4247

CONTRACT NO. 62P24

GROSS AND NET LENGTH = 1054 FT. = 0.20 MILE

STATE OF ILLINOIS
DEPARTMENT OF TRANSPORTATION

SUBMITTED August 5, 20 21
Jose Rios (CAS)
REGIONAL ENGINEER

October 1, 20 21
[Signature]
ENGINEER OF DESIGN AND ENVIRONMENT

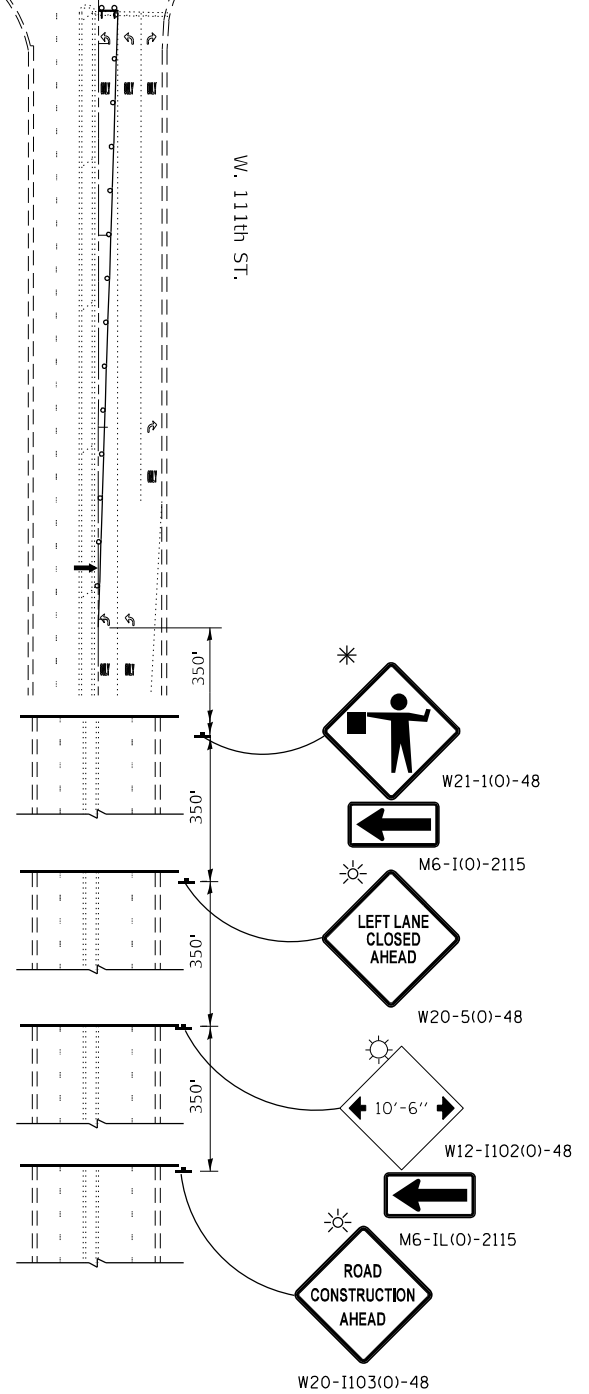
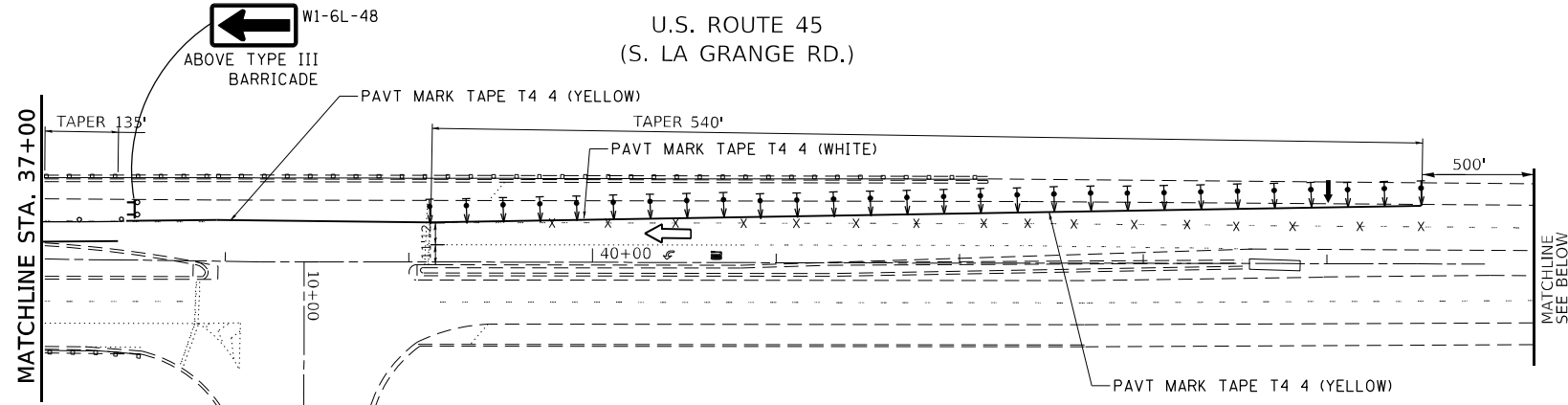
October 21, 20 21
[Signature]
DIRECTOR OF HIGHWAYS PROJECT IMPLEMENTATION

PRINTED BY THE AUTHORITY
OF THE STATE OF ILLINOIS

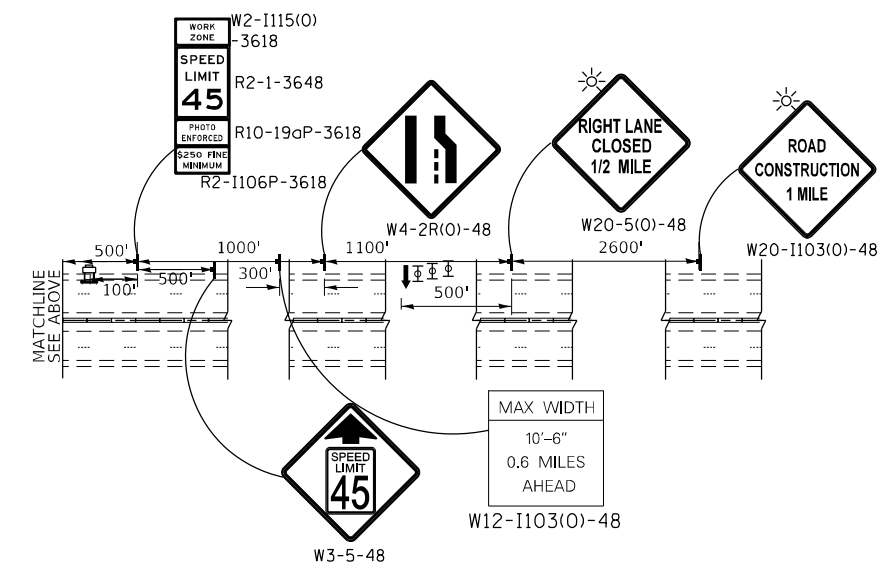
SUMMARY OF QUANTITIES			TOTAL QUANTITIES URBAN	CONSTRUCTION TYPE CODE			
CODE NO	ITEM	UNIT		80% FED 20% STATE	80% FED 20% STATE		
				0047 BRIDGE 1 SN 016-0343	0047 BRIDGE 2 SN 016-0344		
67000400	ENGINEER'S FIELD OFFICE, TYPE A	CAL MO	12	6	6		
67100100	MOBILIZATION	L SUM	1	0.5	0.5		
70107025	CHANGEABLE MESSAGE SIGN	CAL DA	120	60	60		
70300904	PAVEMENT MARKING TAPE, TYPE IV 4"	FOOT	11430	5715	5715		
70400100	TEMPORARY CONCRETE BARRIER	FOOT	1125	562	563		
70600270	IMPACT ATTENUATORS, TEMPORARY (FULLY REDIRECTIVE, WIDE), TEST LEVEL 3	EACH	2	1	1		
78000200	THERMOPLASTIC PAVEMENT MARKING - LINE 4"	FOOT	3266	1633	1633		
78009004	MODIFIED URETHANE PAVEMENT MARKING - LINE 4"	FOOT	4730	2365	2365		
78009006	MODIFIED URETHANE PAVEMENT MARKING - LINE 6"	FOOT	300	150	150		
78200011	BARRIER WALL REFLECTORS, TYPE C	EACH	24	12	12		
X0320011	IMPACT ATTENUATORS, RELOCATE (FULLY REDIRECTIVE, WIDE), TEST LEVEL 3	EACH	2	1	1		
78300202	PAVEMENT MARKING REMOVAL - WATER BLASTING	SO FT	270	135	135		

SUMMARY OF QUANTITIES			TOTAL QUANTITIES URBAN	CONSTRUCTION TYPE CODE			
CODE NO	ITEM	UNIT		80% FED 20% STATE	80% FED 20% STATE		
				0047 BRIDGE 1 SN 016-0343	0047 BRIDGE 2 SN 016-0344		
X2700003	GROOVING FOR RECESSED PAVEMENT MARKING 8"	FOOT	556	278	278		
X2700005	PREFORMED PLASTIC PAVEMENT MARKING, TYPE B - INLAID - LINE 7"	FOOT	556	278	278		
X7010216	TRAFFIC CONTROL AND PROTECTION, (SPECIAL)	L SUM	1	0.5	0.5		
X7010410	SPEED DISPLAY TRAILER	CAL MO	8	4	4		
X7030005	TEMPORARY PAVEMENT MARKING REMOVAL	SO FT	3772	1886	1886		
Z0007101	CONTAINMENT AND DISPOSAL OF LEAD PAINT CLEANING RESIDUES NO. 1	L SUM	1	1			
Z0007102	CONTAINMENT AND DISPOSAL OF LEAD PAINT CLEANING RESIDUES NO. 2	L SUM	1		1		
Z0010501	CLEANING AND PAINTING STEEL BRIDGE NO. 1	L SUM	1	1			
Z0010502	CLEANING AND PAINTING STEEL BRIDGE NO. 2	L SUM	1		1		
Z0030850	TEMPORARY INFORMATION SIGNING	SO FT	77	38.5	38.5		

REV-SEP



* ONLY WHEN FLAGGER IS PRESENT



LEGEND

- WORK ZONE
- DIRECTION OF TRAFFIC FLOW
- ARROW BOARD
- SIGN
- TYPE III BARRICADES WITH FLASHING LIGHTS
- EXISTING PAVEMENT MARKING REMOVAL
- DOUBLE VERTICAL PANELS @ 20' C-C
- DRUMS @ 20' C-C (TAPERS), 50' C-C (TANGENTS)
- DIRECTION INDICATOR BARRICADES W/ STEADY BURN LIGHTS @ 20' C- C
- TYPE II BARRICADE, DRUM, OR VERTICAL BARRICADE WITH MONODIRECTIONAL FLASHING LIGHT @ 25' C- C
- FLAGGER
- SPEED DISPLAY TRAILER

MODEL: Default
 FILE NAME: p:\pub\mranon.dwg
 PROJECT: I:\Projects\18521\18521\18521-001.dwg
 PROJECT: I:\Projects\18521\18521\18521-001.dwg

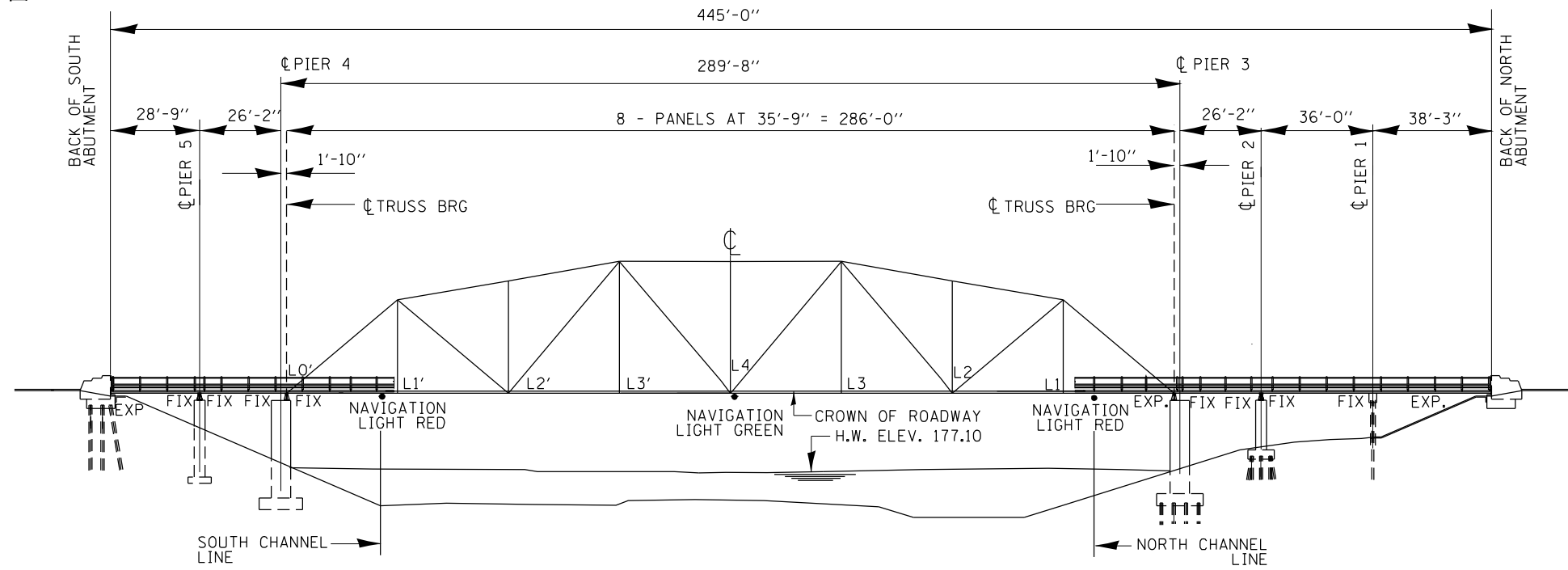
USER NAME = mullanec	DESIGNED -	REVISED -
DRAWN -	REVISED -	
PLOT SCALE = 100,0000' / in.	CHECKED -	REVISED -
PLOT DATE = 8/10/2021	DATE -	REVISED -

**STATE OF ILLINOIS
DEPARTMENT OF TRANSPORTATION**

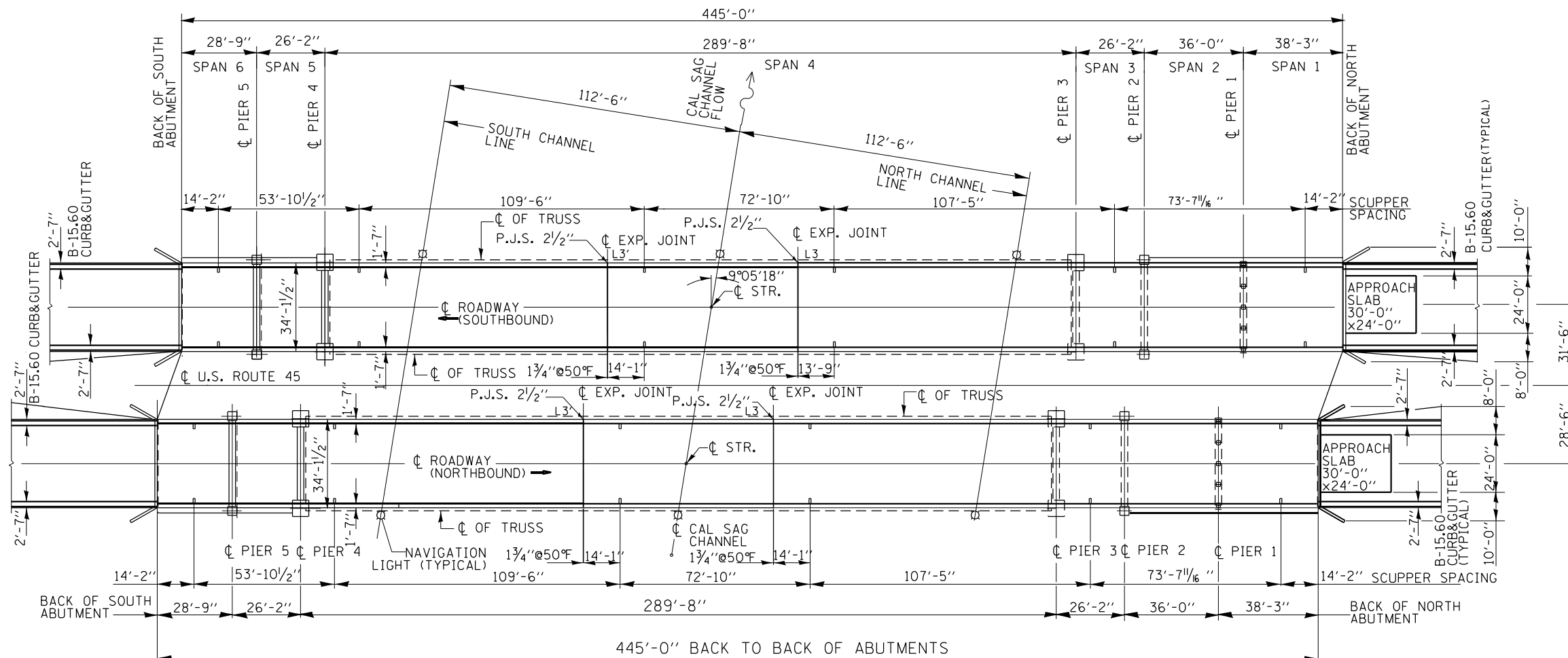
**MAINTENANCE OF TRAFFIC - STAGE II
U.S. ROUTE 45 (LA GRANGE RD.) AT CAL-SAG CHANNEL**

SCALE: 1"=50' SHEET 2 OF 2 SHEETS STA. TO STA.

F.A.P. RTE.	SECTION	COUNTY	TOTAL SHEETS	SHEET NO.
330	2021-096-BP	COOK	29	8
CONTRACT NO. 62P24				
ILLINOIS FED. AID PROJECT				



SPAN 1



FOR INFORMATION ONLY

MODEL: Default
 FILE NAME: p:\v\lanroom.doi.illinois.gov\PWDOT\Documents\DOT Offices\District_1\Project\118521\CADD\Detail\Design\118521-sh1-detail.dgn
 8/10/2021 1:48:07 PM

DESIGNED - Jean Midy	EXAMINED	DATE -
CHECKED -	ACTING ENGINEER OF STRUCTURAL SERVICES	
DRAWN - Mark Tiniakos	PASSED	REVISED -
CHECKED - Jean Midy	ENGINEER OF BRIDGES AND STRUCTURES	REVISED -

DATE -	
REVISED -	
REVISED -	

STATE OF ILLINOIS
 DEPARTMENT OF TRANSPORTATION

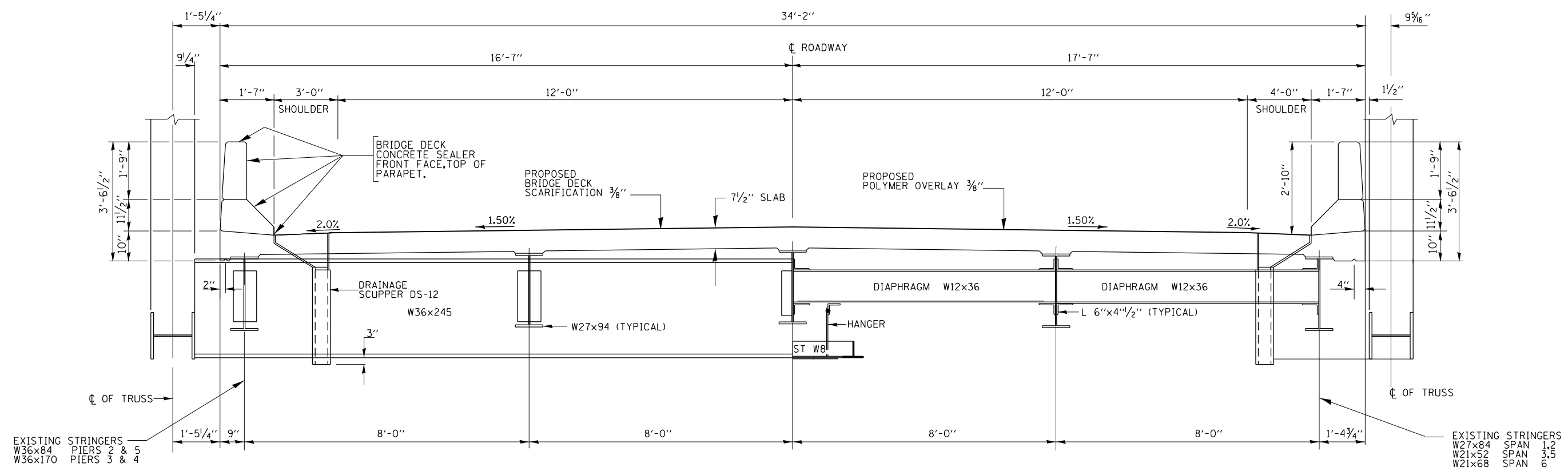
US 45 AT CAL SAG CHANNEL
 PLAN AND ELEVATION
 S.N. 016-0343 AND S.N. 016-0344

SHEET 3 OF 6 SHEETS

F.A.P. RTE.	SECTION	COUNTY	TOTAL SHEETS	SHEET NO.
330	2021-096-BP	COOK	29	9
CONTRACT NO. 62P24				

ILLINOIS FED. AID PROJECT

FOR INFORMATION ONLY



CROSS SECTION (SOUTHBOUND-LOOKING SOUTH) (NORTHBOUND-LOOKING NORTH)

MODEL: Default
FILE NAME: p:\w\lanroom\dot.illinois.gov\PWIDOT\Documents\DOT Offices\District 1\Projects\ID118521\CAD\Detail\18521-shr-detail.dgn
8/10/2021 1:48:07 PM

DESIGNED - Jean Midy	EXAMINED _____	DATE - _____
CHECKED - _____	ACTING ENGINEER OF STRUCTURAL SERVICES	
DRAWN - Mark Tiniakos	PASSED _____	REVISED - _____
CHECKED - Jean Midy	ENGINEER OF BRIDGES AND STRUCTURES	REVISED - _____

STATE OF ILLINOIS
DEPARTMENT OF TRANSPORTATION

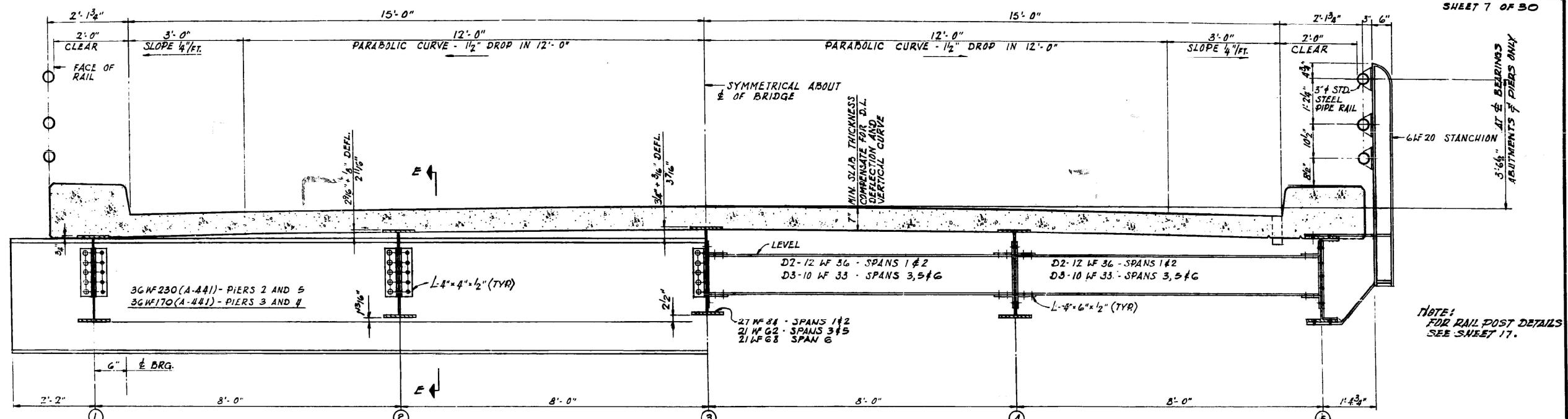
US 45 AT CAL SAG CHANNEL
CROSS SECTION
S.N. 016-0343 AND S.N. 016-0344

SHEET 4 OF 6 SHEETS

F.A.P. RTE.	SECTION	COUNTY	TOTAL SHEETS	SHEET NO.
330	2021-096-BP	COOK	29	10
CONTRACT NO. 62P24				
ILLINOIS FED. AID PROJECT				

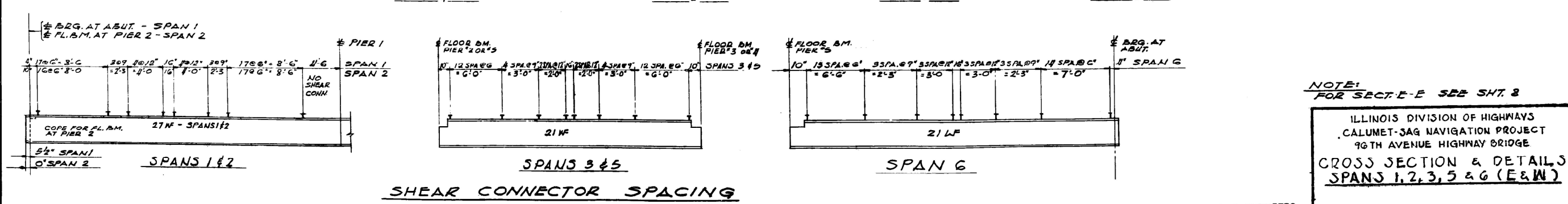
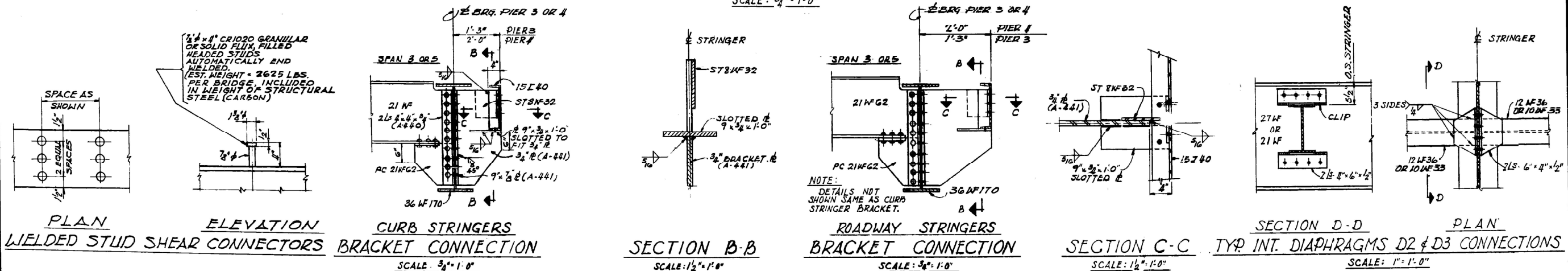
ROUTE NO.	SECTION	COUNTY	TOTAL SHEETS	SHEET NO.
R.I. 51	B-CR	COOK	70	20
STA.	TO STA.		PROJECT	
S.P.R. 11-24	ILLINOIS			

SHEET 7 OF 30



AT FLOOR BEAM BETWEEN FLOOR BEAMS
 CROSS SECTION AT APPROACH SPANS
 SCALE: 3/4" = 1'-0"

NOTE:
 FOR RAIL POST DETAILS
 SEE SHEET 17.



NOTE:
 FOR SECT. E-E SEE SHT. 8

ILLINOIS DIVISION OF HIGHWAYS
 CALUMET-JAG NAVIGATION PROJECT
 90TH AVENUE HIGHWAY BRIDGE
 CROSS SECTION & DETAILS
 SPANS 1, 2, 3, 5 & 6 (E & W)

SCALE AS NOTED DATE: JUNE 18, 1965

ALFRED BENESCH & COMPANY
 10 SOUTH WABASH AVE
 CONSULTING ENGINEERS
 CHICAGO, ILLINOIS

USER NAME = mullaneco	DESIGNED -	REVISED -
	DRAWN -	REVISED -
PLOT SCALE = 100,0000' / in.	CHECKED -	REVISED -
PLOT DATE = 8/10/2021	DATE -	REVISED -

STATE OF ILLINOIS
 DEPARTMENT OF TRANSPORTATION

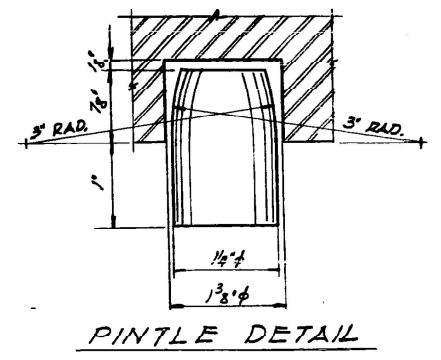
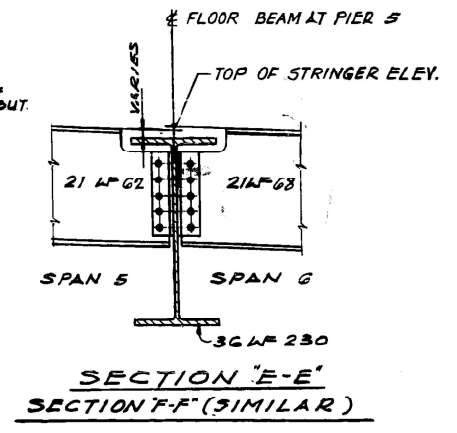
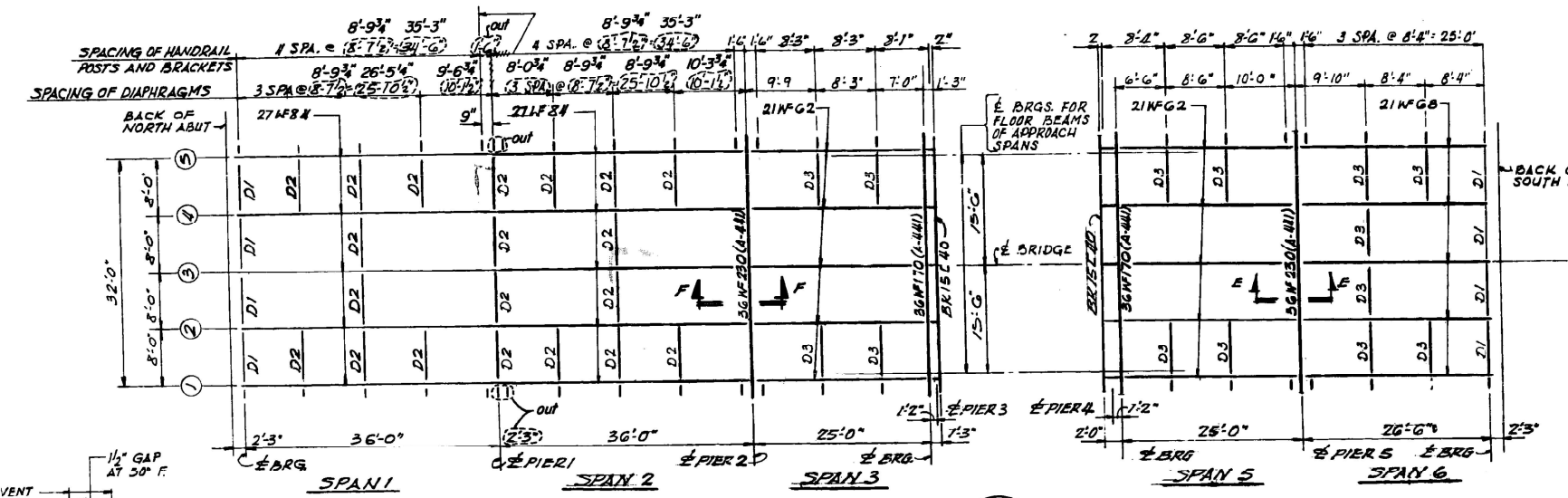
EXISTING BRIDGE PLANS
 CROSS SECTION DETAILS

SCALE:	SHEET	OF	SHEETS	STA.	TO	STA.
--------	-------	----	--------	------	----	------

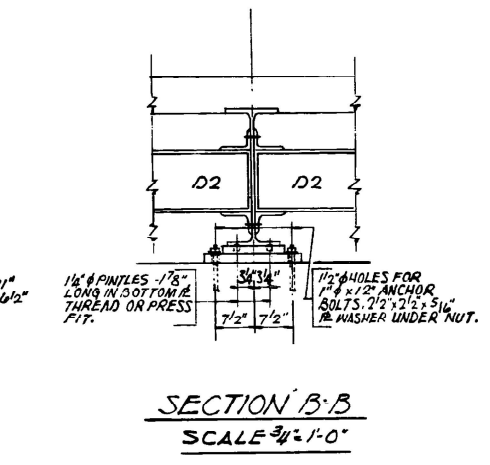
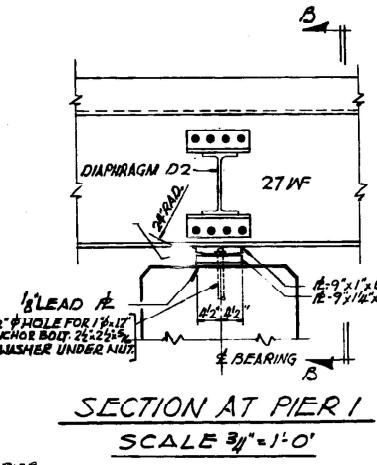
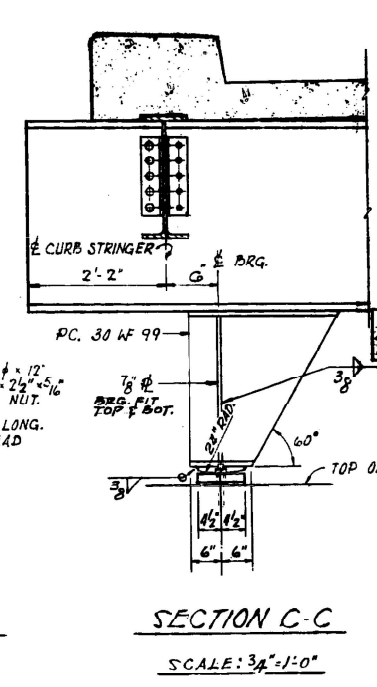
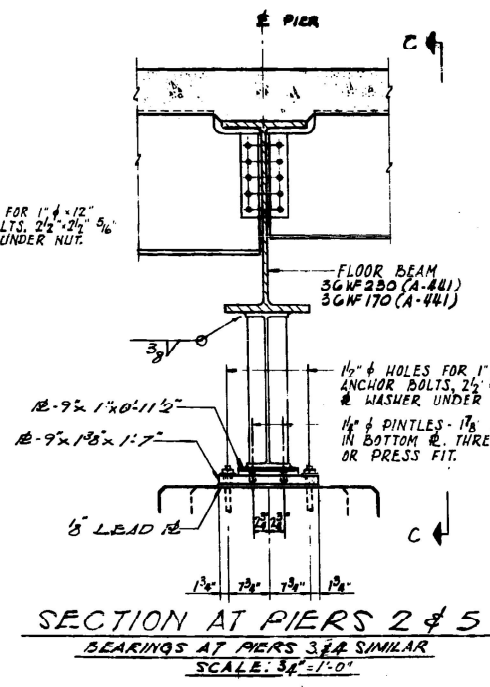
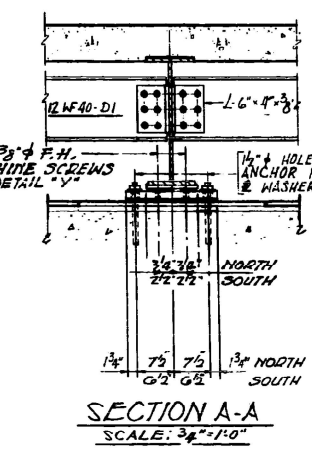
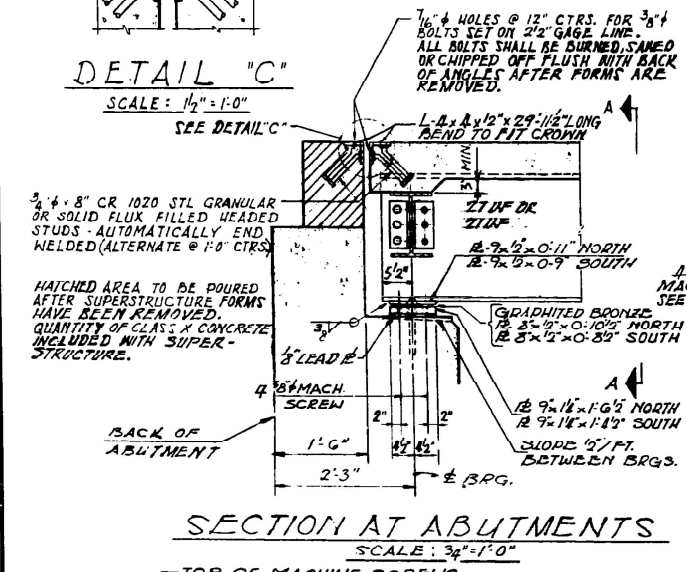
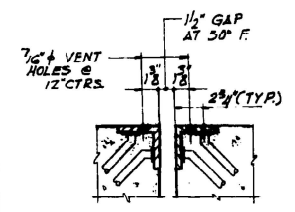
F.A.P. RTE.	SECTION	COUNTY	TOTAL SHEETS	SHEET NO.
330	2021-096-BP	COOK	29	11
CONTRACT NO. 62P24				
ILLINOIS FED. AID PROJECT				

MODEL: Default
 FILE NAME: p:\pub\harrington.edu\illinois.gov\PROJECTS\DOT\Documents\DOT - Office\Drawings\118521\CADD\Drawings\118521-sh-drawings.dwg
 PROJECT: 118521\CADD\Drawings\118521-sh-drawings.dwg
 DATE: 8/10/2021

ROUTE NO.	SECTION	COUNTY	TOTAL SHEETS	SHEET NO.
51	511-6-C	COOK	70	21
STA.	TO STA.		PROJECT	
SHEET 6 OF 30				



NOTE:
DIAPHRAGM D1-12LF40
DIAPHRAGM D2-12LF36
DIAPHRAGM D3-10LF33



TOP OF STRINGER ELEVATIONS FOR FABRICATION ONLY

LOCATION	STRINGER No. 1 AND 5	2 AND 4	3
E BRGS. NORTH ABUTMENT	28.175	28.627	28.683
E BRGS. PIER 1	28.592	28.714	28.800
E BRGS. PIER 2	28.636	28.789	28.844
E BRGS. PIER 3 SPAN 3	28.621	28.776	28.832
E BRGS. PIER 4 SPAN 5	25.878	26.031	26.087
E BRGS. PIER 5	25.425	25.578	25.634
E BRGS. SOUTH ABUTMENT	28.902	25.054	25.110

ALFRED BENESCH & COMPANY
10 SOUTH WABASH AVE
CONSULTING ENGINEERS
CHICAGO, ILLINOIS

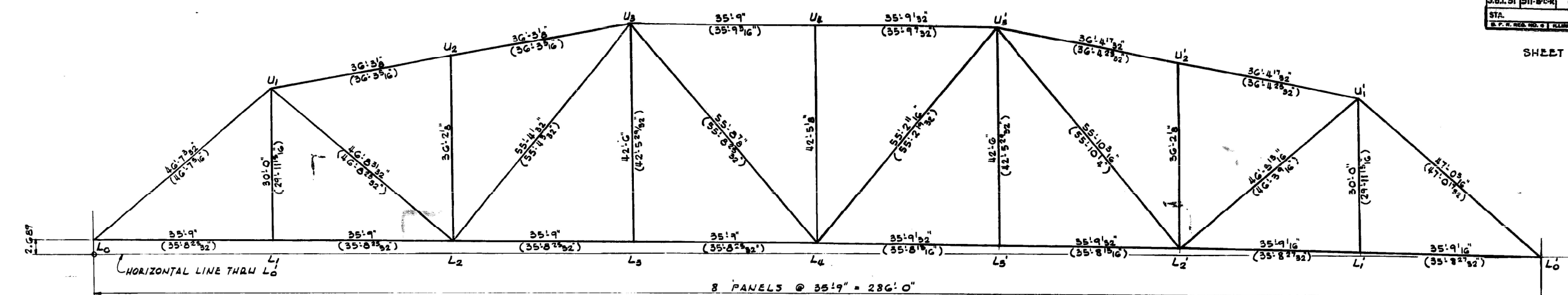
ILLINOIS DIVISION OF HIGHWAYS
CALUMET-SAG NAVIGATION PROJECT
96TH AVENUE HIGHWAY BRIDGE
FRAMING PLAN & BEARING DETAILS
SPANS 1,2,3,5&6 (E&W)
SCALE: AS NOTED
DATE: JUNE 18, 1965

Rev. 2-9-66 Handrail Post and Diaphragm Spacing L.W.

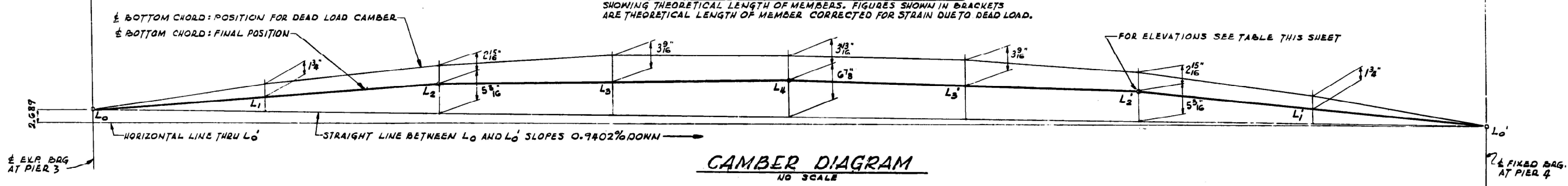
USER NAME = mullanec	DESIGNED -	REVISED -	STATE OF ILLINOIS DEPARTMENT OF TRANSPORTATION	EXISTING BRIDGE PLANS FRAMING PLAN AND BEARING DETAILS	F.A.P. RTE.	SECTION	COUNTY	TOTAL SHEETS	SHEET NO.	
PLOT SCALE = 100,000' / in.	CHECKED -	REVISED -			330	2021-096-BP	COOK	29	12	
PLOT DATE = 8/10/2021	DATE -	REVISED -			SCALE: SHEET OF SHEETS STA. TO STA.		ILLINOIS FED. AID PROJECT			
					CONTRACT NO. 62P24					

ROUTE NO.	SECTION	COUNTY	TOTAL SHEETS	SHEET NO.
381.81	11-B-C-R	COOK	70	22
STA.	TO STA.		PROJECT	

SHEET 9 OF 80



WEST ELEVATION OF TRUSS
 SHOWING THEORETICAL LENGTH OF MEMBERS. FIGURES SHOWN IN BRACKETS ARE THEORETICAL LENGTH OF MEMBER CORRECTED FOR STRAIN DUE TO DEAD LOAD.



CAMBER DIAGRAM
 NO SCALE

ELEVATIONS

PANEL POINT	TOP OF CROWN	± BOTTOM CHORD
L ₀	29.359	26.317
L ₁	29.275	26.197
L ₂	29.118	26.076
L ₃	28.890	25.872
L ₄	28.590	25.548
L ₅	28.218	25.140
L ₆	27.774	24.732
L ₇	27.258	24.180
L ₈	26.670	23.628

ILLINOIS DIVISION OF HIGHWAYS
 CALUMET SAG NAVIGATION PROJECT
 96TH AVENUE HIGHWAY BRIDGE
TRUSS ELEVATION & STRESS TABLE

ALFRED BENESCH & COMPANY CONSULTING ENGINEERS
 10 SOUTH WABASH AVENUE CHICAGO, ILLINOIS

SCALE: AS NOTED DATE: JUNE 18, 1963

MODEL: Default FILE: N:\MISC\proj\hwy\mtrn\dot\illinois\gov\pww\dot\Documents\DOT_Offices\Distrefc\1\Project\18521\CaddData\Design\0118521-sh-dtbls.dwg

USER NAME = mullanec	DESIGNED -	REVISED -
	DRAWN -	REVISED -
PLOT SCALE = 100,0000' / in.	CHECKED -	REVISED -
PLOT DATE = 8/10/2021	DATE -	REVISED -

STATE OF ILLINOIS
 DEPARTMENT OF TRANSPORTATION

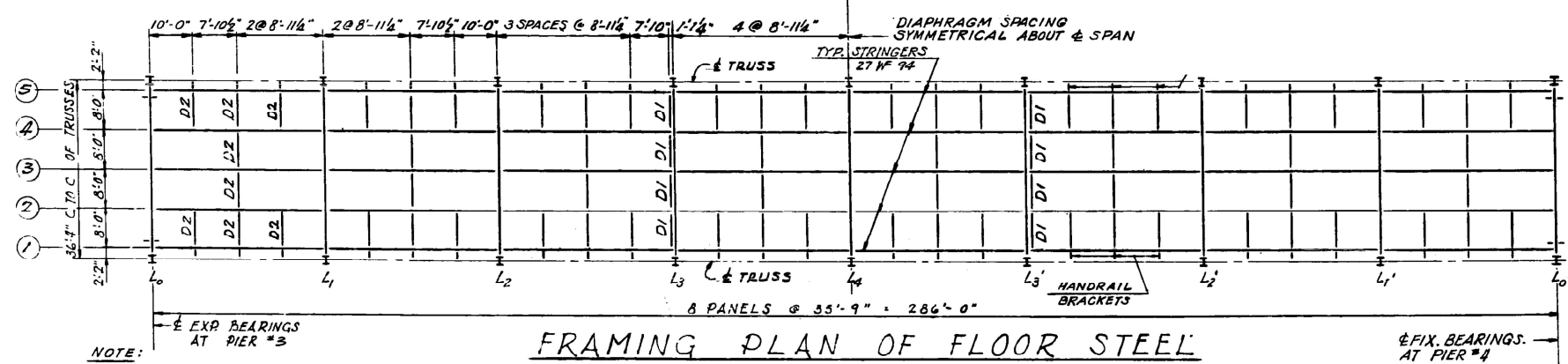
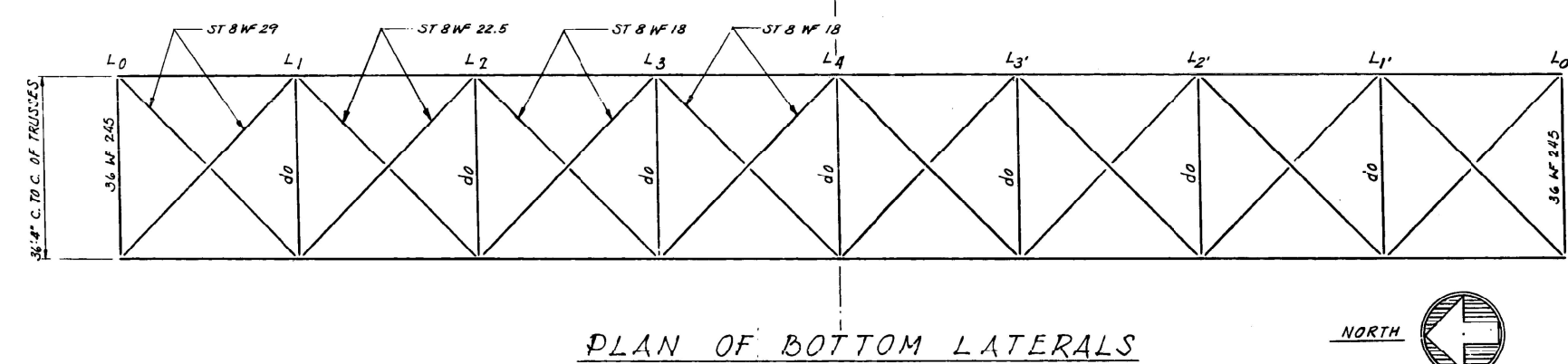
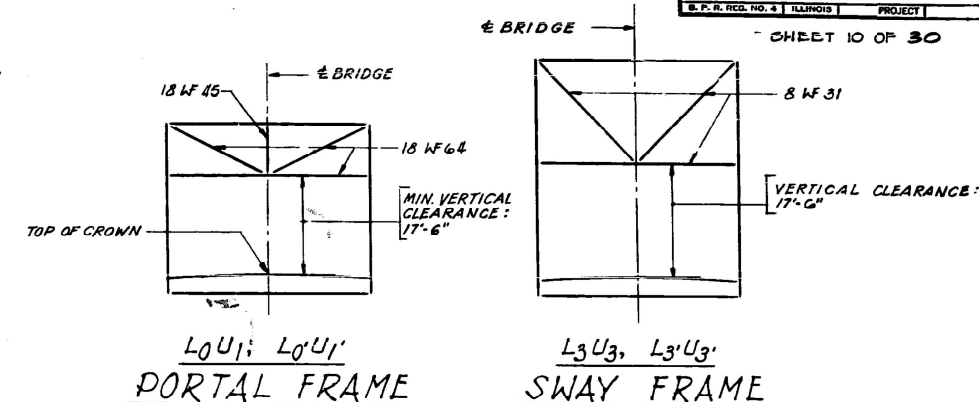
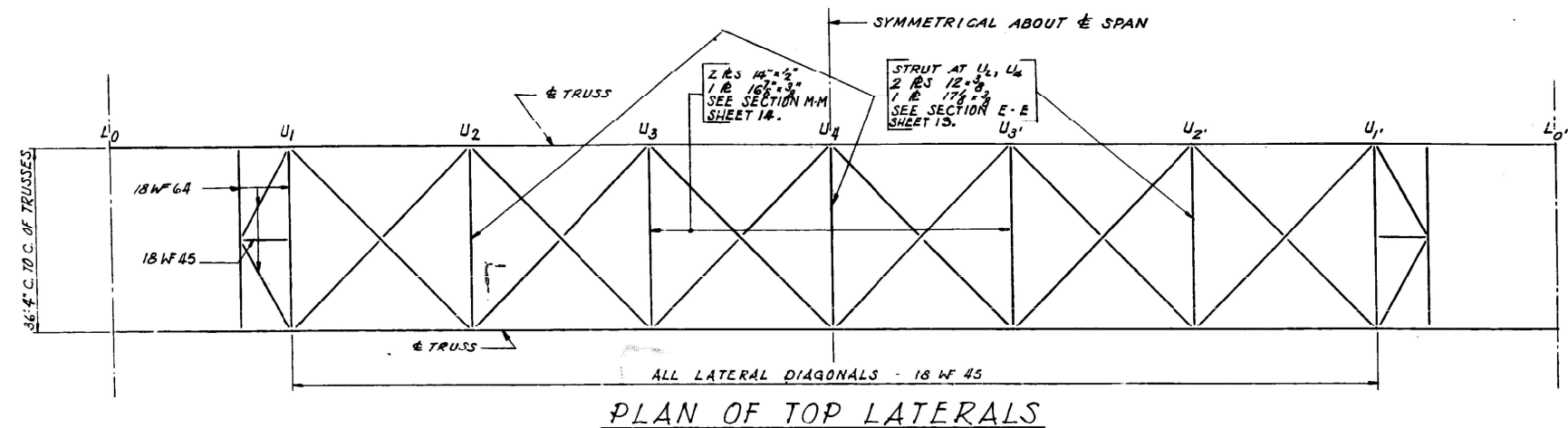
EXISTING BRIDGE PLANS
 TRUSS ELEVATIONS

SCALE: SHEET OF SHEETS STA. TO STA.

F.A.P. RTE.	SECTION	COUNTY	TOTAL SHEETS	SHEET NO.
330	2021-096-BP	COOK	29	13
CONTRACT NO. 62P24				
ILLINOIS FED. AID PROJECT				

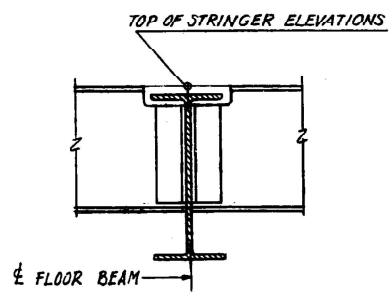
ROUTE NO.	SECTION	COUNTY	TOTAL SHEETS	SHEET NO.
S.S. 151	SH B-C-R	COOK	70	23
STA.	TO STA.		PROJECT	
S. P. R. REG. NO. 4 ILLINOIS				

SHEET 10 OF 30



NOTE:
DIAPHRAGM D2 TYPICAL EXCEPT AS NOTED.
D1 - 12 WF 10
D2 - 12 WF 36

NOTES:
FOR GENERAL NOTES SEE SHEET 2.
FOR ADDITIONAL NOTES SEE SHEET 13.



ILLINOIS DIVISION OF HIGHWAYS
CALUMET-SAG NAVIGATION PROJECT
96TH AVENUE HIGHWAY BRIDGE
FRAMING PLAN-SPAN 4 (E&W)
SCALE AS NOTED DATE: JUNE 18, 1965

ALFRED BENESCH & COMPANY
10 SOUTH WABASH AVE
CONSULTING ENGINEERS
CHICAGO, ILLINOIS

MODEL: Default FILE NAME: p:\pub\baronum.dwg PROJECT: 118521\CADDData\Design\0118521-sh-drawings.com

USER NAME = mullanec	DESIGNED -	REVISED -
PLOT SCALE = 100,0000' / in.	DRAWN -	REVISED -
PLOT DATE = 8/10/2021	CHECKED -	REVISED -
	DATE -	REVISED -

STATE OF ILLINOIS
DEPARTMENT OF TRANSPORTATION

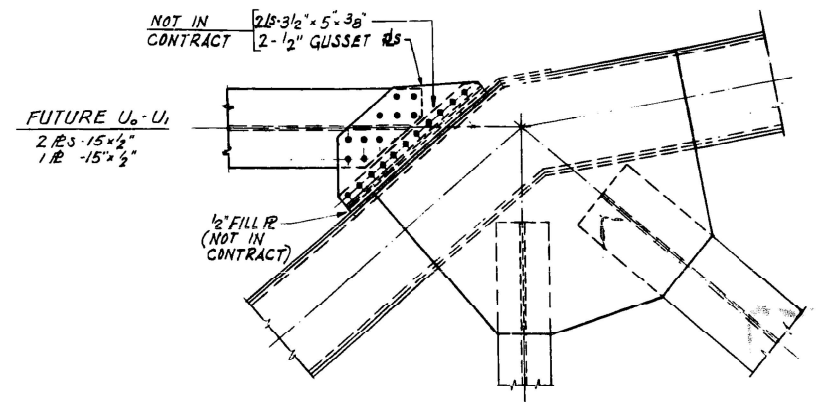
EXISTING BRIDGE PLANS
FRAMING PLAN

SCALE: SHEET OF SHEETS STA. TO STA.

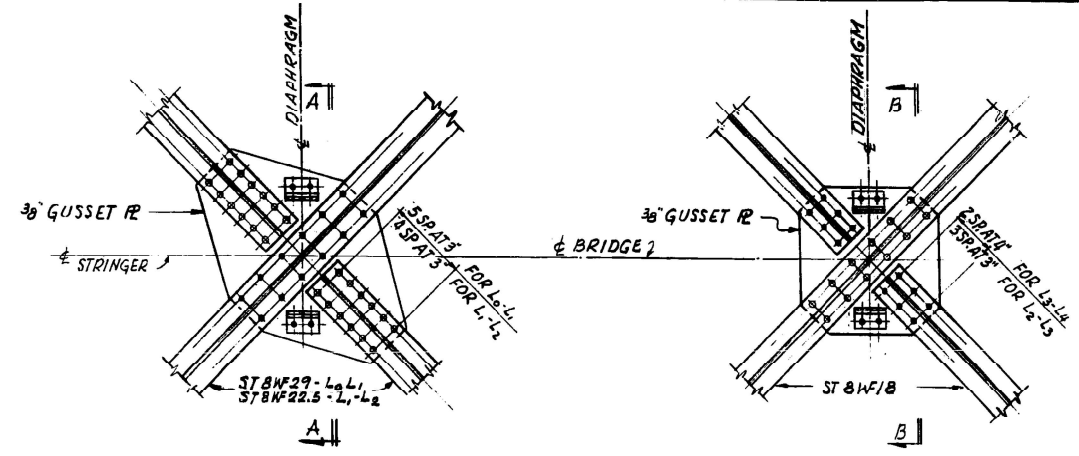
F.A.P. RTE.	SECTION	COUNTY	TOTAL SHEETS	SHEET NO.
330	2021-096-BP	COOK	29	14
CONTRACT NO. 62P24				
ILLINOIS FED. AID PROJECT				

ROUTE NO.	SECTION	COUNTY	TOTAL SHEETS	SHEET NO.
S.B.I. 51	SIF-B-C-R	COOK	70	25
STA.	TO STA.		PROJECT	
S. P. & M. NO. 6	ILLINOIS		PROJECT	

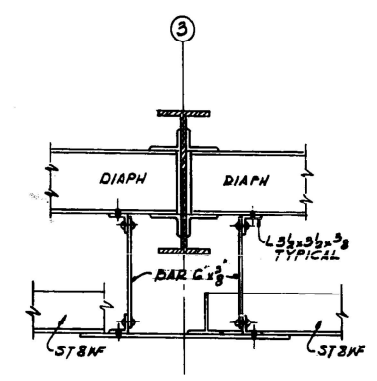
SHEET 12 OF 30



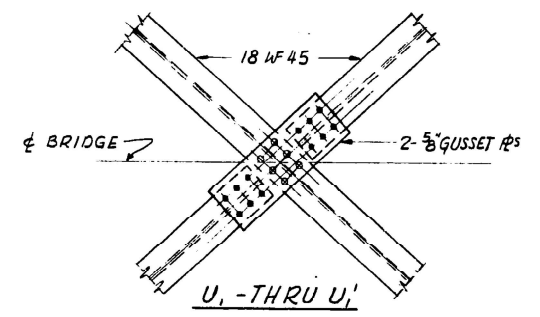
DETAIL AT U₁ FOR FUTURE U₀-U₁ CONNECTION
 DETAIL AT U₁ SIMILAR
 SCALE: 3/4" = 1'-0"



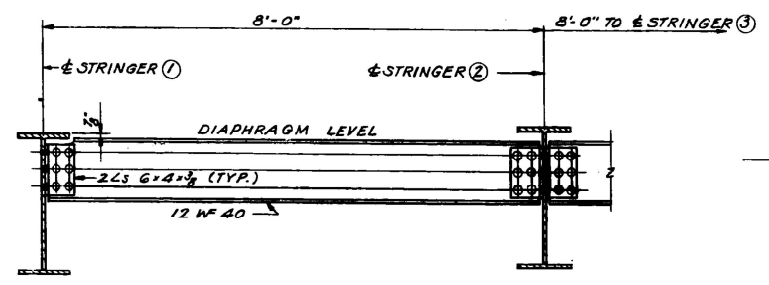
L₀ - THRU L₂ CONNECTION OF BOTTOM LATERAL BRACING
 SCALE: 3/4" = 1'-0"



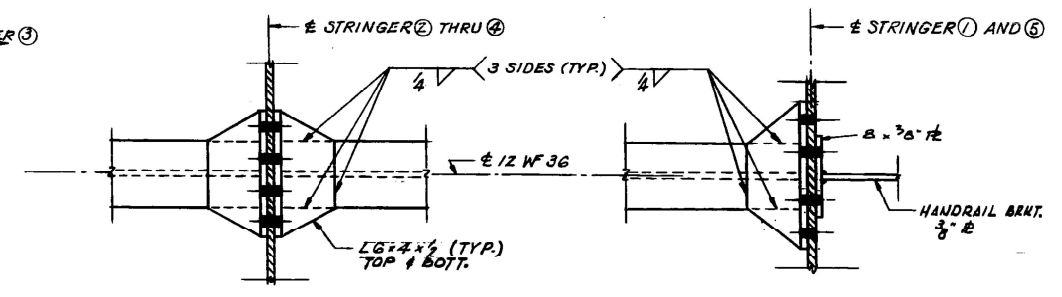
SECTION A-A
 SECTION B-B (SIMILAR)
 SCALE: 3/4" = 1'-0"



U₁ - THRU U₁'
 CONNECTION OF TOP LATERAL BRACING
 SCALE: 3/4" = 1'-0"



D1 - DIAPHRAGM AT L₃ & L₃'
 SCALE: 3/4" = 1'-0"



D2 - DIAPHRAGM CONNECTIONS
 SCALE: 1/2" = 1'-0"

ILLINOIS DIVISION OF HIGHWAYS
 CALUMET-SAG NAVIGATION PROJECT
 96TH AVENUE HIGHWAY BRIDGE
 MISCELLANEOUS TRUSS DETAILS

ALFRED BENESCH & COMPANY
 10 SOUTH WABASH AVE

CONSULTING ENGINEERS
 CHICAGO, ILLINOIS

SCALE AS NOTED

DATE: JUNE 18, 1965

MODEL: Default
 FILE NAME: p:\mll\mllroom\dot\illinois\gov\pww\dtd\Documents\DOT_Offices\Dist\ctc_1\Projects\18521\CADD\Data\Design\18521-sh-drawings.dwg

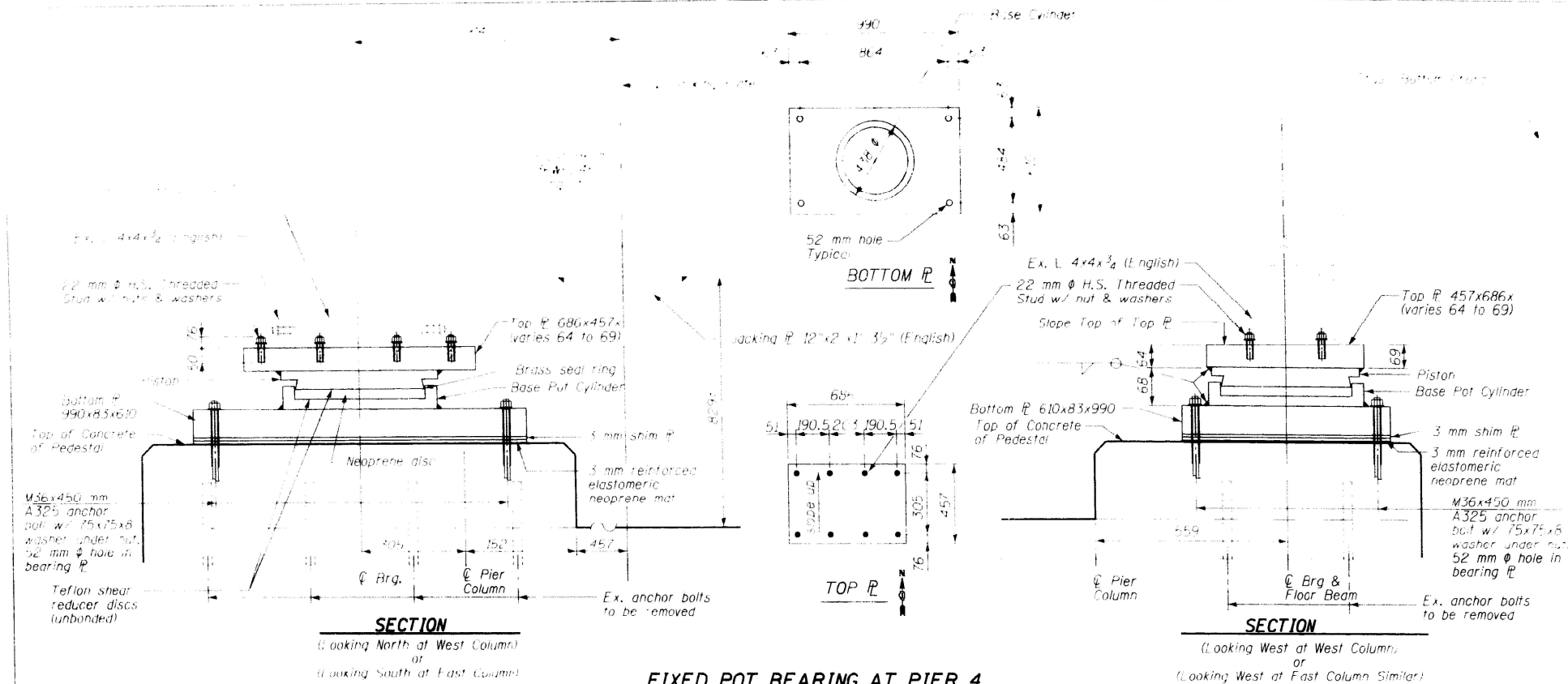
USER NAME = mullanecd	DESIGNED -	REVISED -
	DRAWN -	REVISED -
PLOT SCALE = 100,0000' / in.	CHECKED -	REVISED -
PLOT DATE = 8/10/2021	DATE -	REVISED -

STATE OF ILLINOIS
 DEPARTMENT OF TRANSPORTATION

EXISTING BRIDGE PLANS
 MISCELLANEOUS TRUSS DETAILS

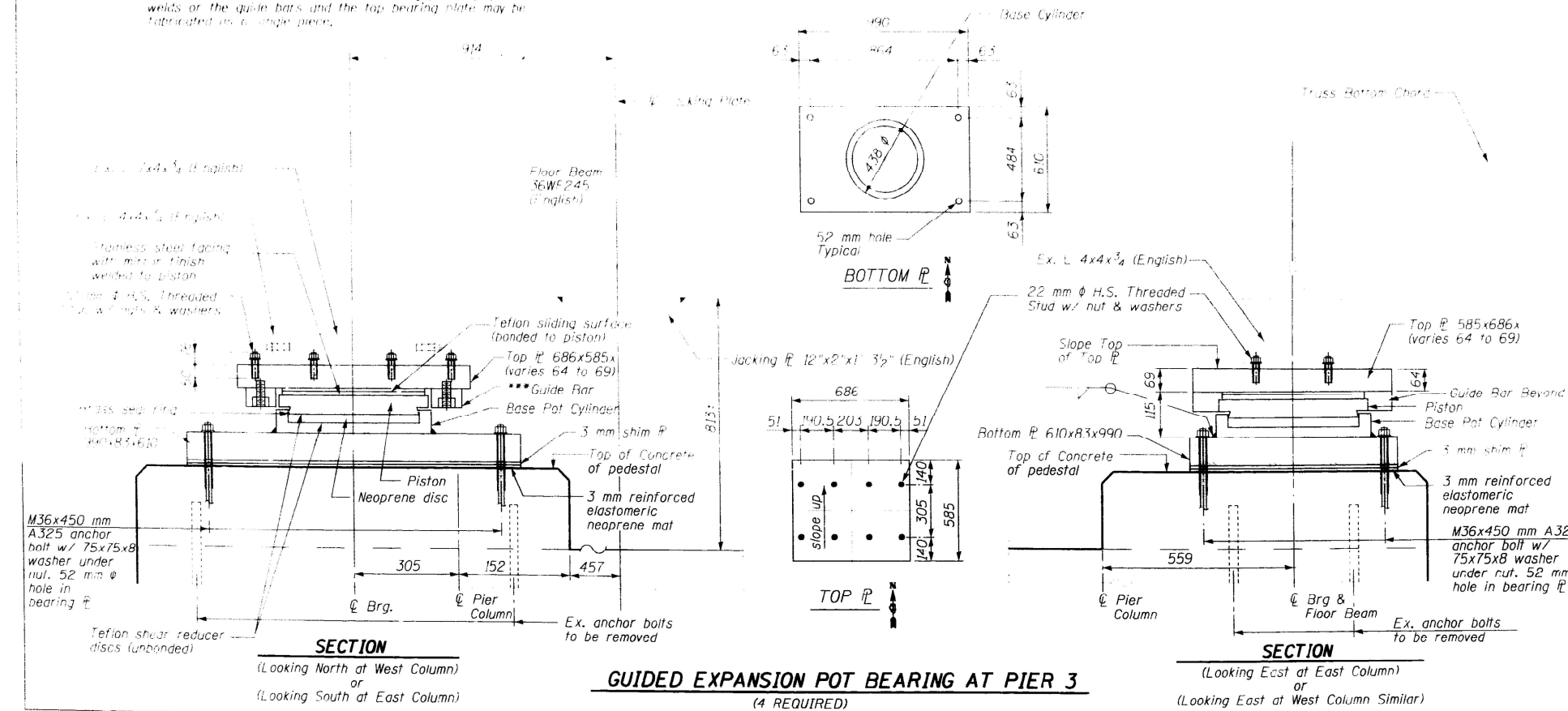
SCALE: SHEET OF SHEETS STA. TO STA.

F.A.P. RTE.	SECTION	COUNTY	TOTAL SHEETS	SHEET NO.
330	2021-096-BP	COOK	29	16
			CONTRACT NO. 62P24	
		ILLINOIS	FED. AID PROJECT	



FIXED POT BEARING AT PIER 4
(4 REQUIRED)

*** In alternate to the bolted connection shown, the guide bars may be connected to the top bearing plate by groove welds or the guide bars and the top bearing plate may be fabricated as a single piece.



GUIDED EXPANSION POT BEARING AT PIER 3
(4 REQUIRED)

REVISIONS	
NAME	DATE
Chris Burke	06-20-00

ILLINOIS DEPARTMENT OF TRANSPORTATION
TRUSS BEARINGS
NORTHBOUND & SOUTHBOUND
U.S. ROUTE 45 OVER CAL SAG CHANN
FAP 330 SECTION 511B-C R.
COOK COUNTY STATION 1+567.21
STRUCTURE NO. 016-0343 (SB)
STRUCTURE NO. 016-0344 (NB)
DATE 04-19-00

USER NAME = mullanecd	DESIGNED -	REVISED -
PLOT SCALE = 100,0000' / in.	DRAWN -	REVISED -
PLOT DATE = 8/10/2021	CHECKED -	REVISED -
	DATE -	REVISED -

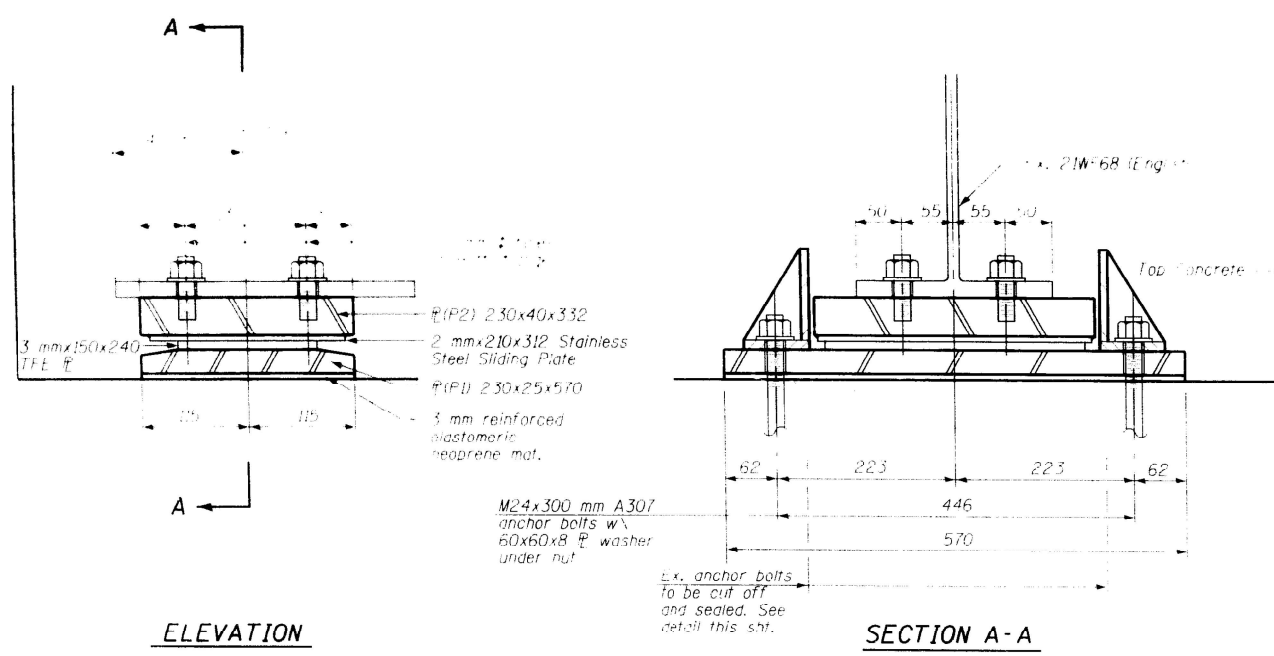
STATE OF ILLINOIS
DEPARTMENT OF TRANSPORTATION

SCALE:	SHEET	OF	SHEETS	STA.	TO	STA.
--------	-------	----	--------	------	----	------

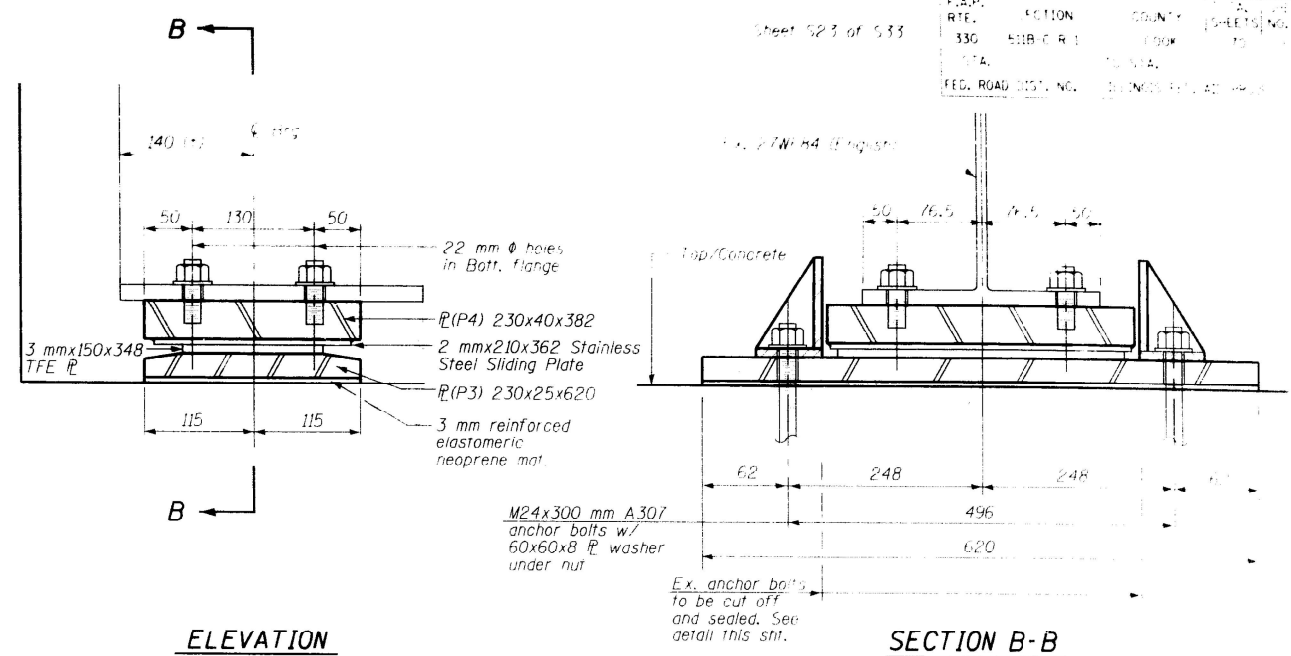
EXISTING BRIDGE PLANS
TRUSS BEARINGS

F.A.P. RTE.	SECTION	COUNTY	TOTAL SHEETS	SHEET NO.
330	2021-096-BP	COOK	29	22
CONTRACT NO. 62P24				
ILLINOIS FED. AID PROJECT				

MODEL: Default
 FILE NAME: p:\mll\mllroom\dot\illinois\gov\PIV\DOT\Documents\DOT Offices\District 1\Projects\0118521\CADD\Bldg\Design\0118521-sh-bearings.dwg
 PROJECT: 0118521



ELEVATION
SECTION A-A
SOUTH ABUTMENT-EXPANSION BEARING
 (NORTHBOUND AND SOUTHBOUND)
 (10-Required)



ELEVATION
SECTION B-B
NORTH ABUTMENT-EXPANSION BEARING
 (NORTHBOUND AND SOUTHBOUND)
 (10-Required)

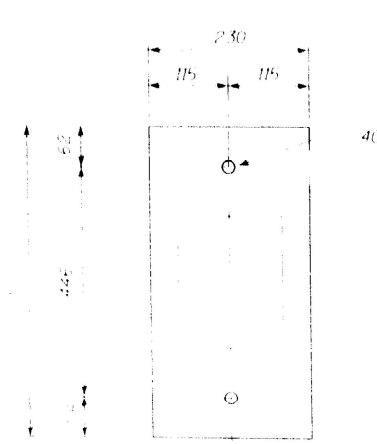


PLATE (P1)

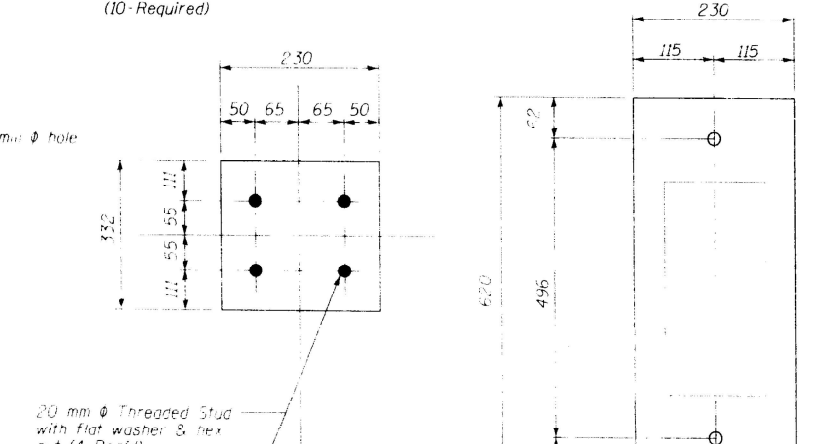


PLATE (P3)

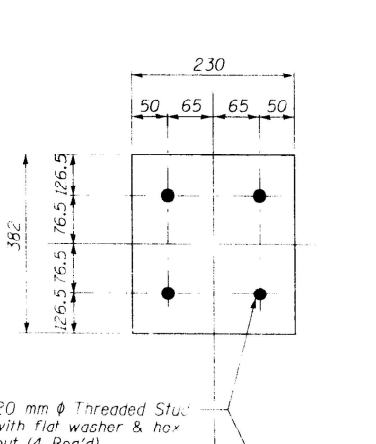
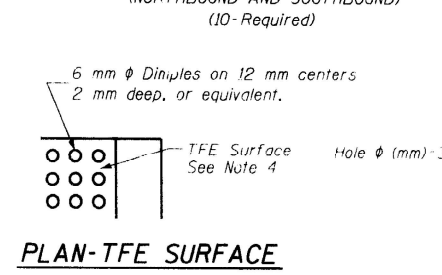
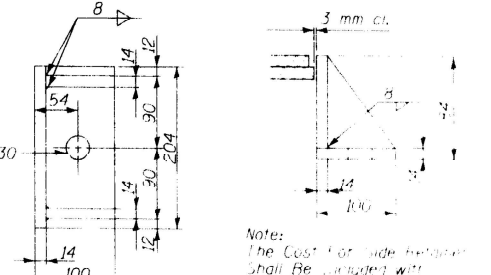


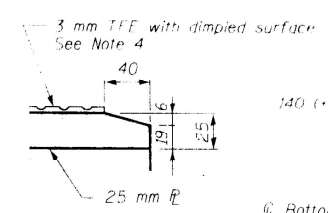
PLATE (P4)



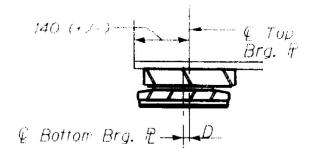
PLAN-TFE SURFACE



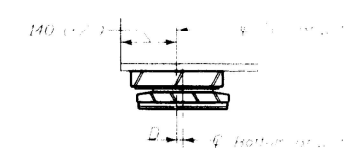
SIDE RETAINER



SECTION THRU TFE



BELOW 10°C



ABOVE 10°C

SETTING ANCHOR BOLTS AT EXP. BRG.
 D=1 mm per each 10 m of expansion for every 1°C temp. change from the normal temp. of 10°C

REVISIONS	
NAME	DATE
Don Filice	06-20-00

ILLINOIS DEPARTMENT OF TRANSPORTATION
 ABUTMENT BEARINGS
 NORTHBOUND & SOUTHBOUND
 U.S. ROUTE 45 OVER CAL SAG CHANN.
 FAP 330 SECTION 511B-C-R
 COOK COUNTY STATION 1+6+7.200
 STRUCTURE NO. 016-0343 (SB)
 STRUCTURE NO. 016-0344 (NB)
 DRAWN BY: [Signature]
 DATE 04-19-00 CHECKED BY: W.A.

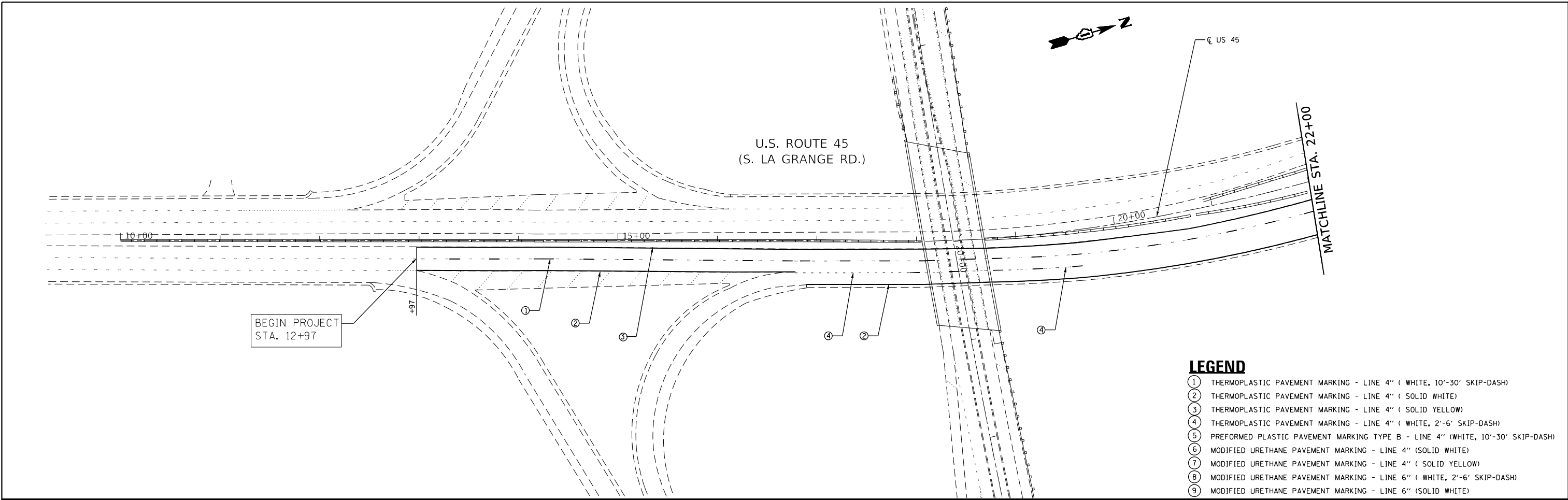
USER NAME = mullanecd	DESIGNED -	REVISED -
PLOT SCALE = 100,0000' / in.	DRAWN -	REVISED -
PLOT DATE = 8/10/2021	CHECKED -	REVISED -
	DATE -	REVISED -

STATE OF ILLINOIS
 DEPARTMENT OF TRANSPORTATION

EXISTING BRIDGE PLANS		F.A.P. RTE.	SECTION	COUNTY	TOTAL SHEETS	SHEET NO.
ABUTMENT BEARINGS		330	2021-096-BP	COOK	29	23
SCALE:	SHEET	OF	SHEETS	STA.	TO	STA.

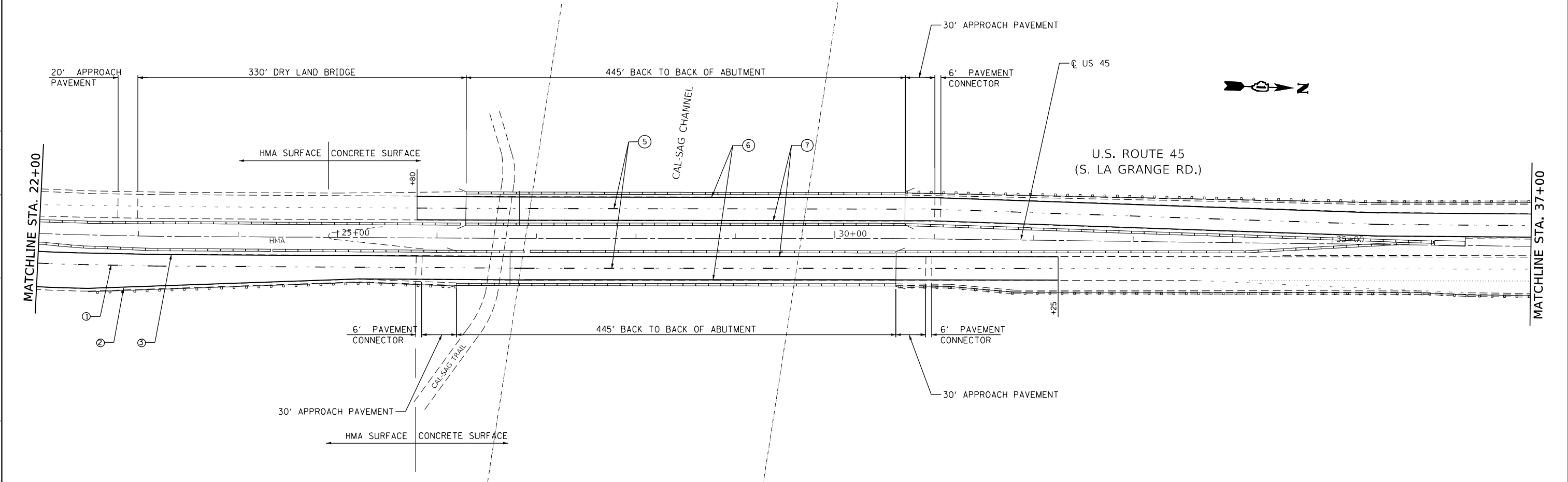
ILLINOIS	FED. AID PROJECT
CONTRACT NO. 62P24	

MODEL: Default
 FILE NAME: p:\illinois\dot\illinois\dot\Documents\DOT_Offices\District 1\Projects\0118521\CADD\Drawings\DOT_Offices\District 1\Projects\0118521-sht-drawings.dwg
 PROJECT: 0118521



LEGEND

- ① THERMOPLASTIC PAVEMENT MARKING - LINE 4" (WHITE, 10'-30' SKIP-DASH)
- ② THERMOPLASTIC PAVEMENT MARKING - LINE 4" (SOLID WHITE)
- ③ THERMOPLASTIC PAVEMENT MARKING - LINE 4" (SOLID YELLOW)
- ④ THERMOPLASTIC PAVEMENT MARKING - LINE 4" (WHITE, 2'-6' SKIP-DASH)
- ⑤ PREFORMED PLASTIC PAVEMENT MARKING TYPE B - LINE 4" (WHITE, 10'-30' SKIP-DASH)
- ⑥ MODIFIED URETHANE PAVEMENT MARKING - LINE 4" (SOLID WHITE)
- ⑦ MODIFIED URETHANE PAVEMENT MARKING - LINE 4" (SOLID YELLOW)
- ⑧ MODIFIED URETHANE PAVEMENT MARKING - LINE 6" (WHITE, 2'-6' SKIP-DASH)
- ⑨ MODIFIED URETHANE PAVEMENT MARKING - LINE 6" (SOLID WHITE)



MODEL: Default
 FILE NAME: p:\mullane\p\illinois\dot\Documents\DOT - Office\Drawings\1\Projects\118521\CADD\Drawings\118521-2h-plb-001.dwg
 PROJECT: 118521

USER NAME = mullane	DESIGNED -	REVISD -
	DRAWN -	REVISD -
PLOT SCALE = 100,0000' / in.	CHECKED -	REVISD -
PLOT DATE = 8/10/2021	DATE -	REVISD -

**STATE OF ILLINOIS
DEPARTMENT OF TRANSPORTATION**

PAVEMENT MARKING PLAN			
U.S. ROUTE 45 (LA GRANGE RD.) AT CAL-SAG CHANNEL			
SCALE: 1"=50'	SHEET 1	OF 2 SHEETS	STA. TO STA.

F.A.P. RTE.	SECTION	COUNTY	TOTAL SHEETS	SHEET NO.
330	2021-096-BP	COOK	29	24
CONTRACT NO. 62P24				
ILLINOIS FED. AID PROJECT				

TURN BAY ENTRANCE AT START OF LANE CLOSURE TAPER

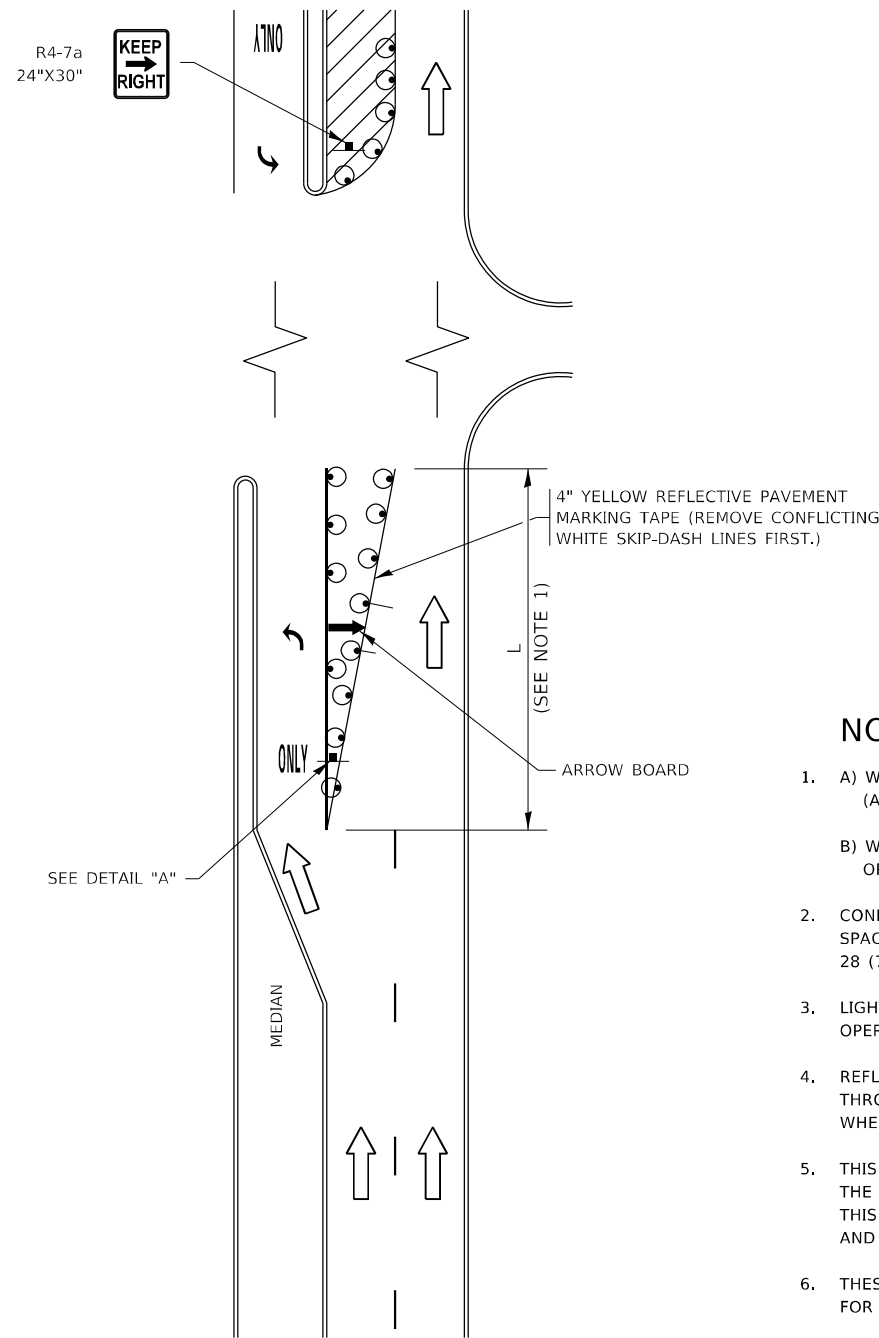


FIGURE 1

TURN BAY ENTRANCE WITHIN A LANE CLOSURE

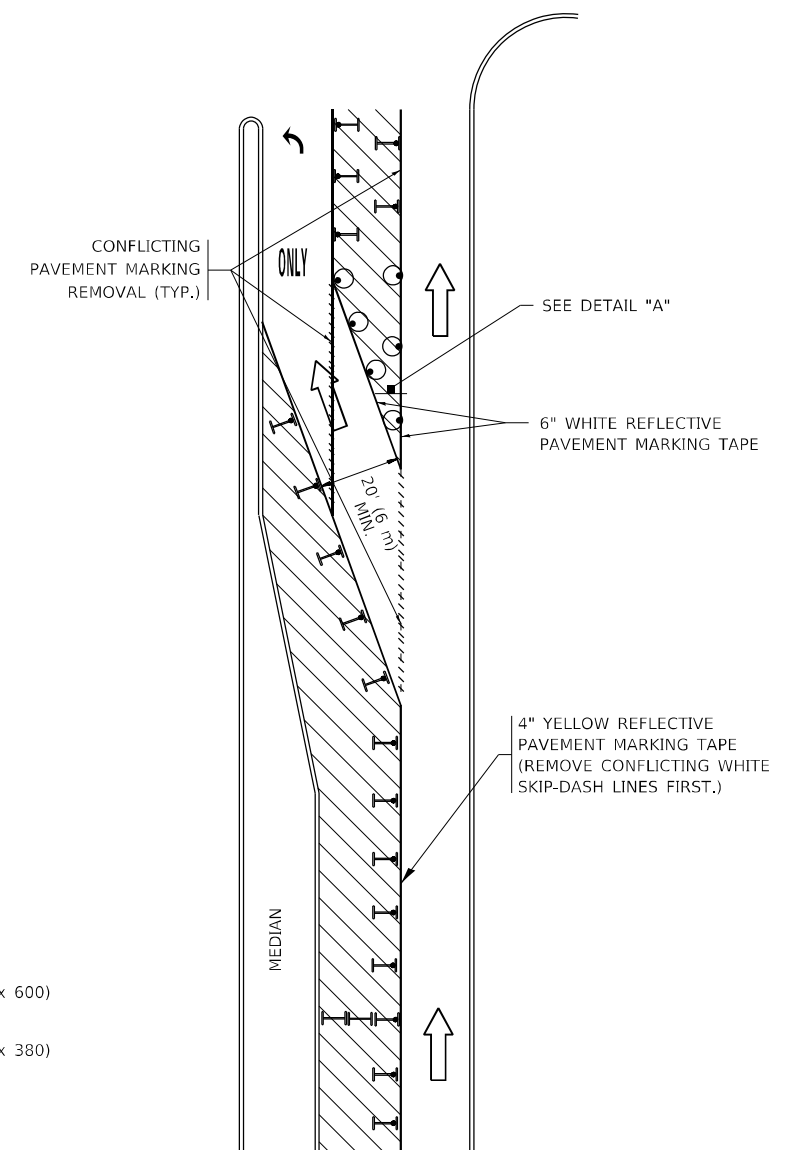


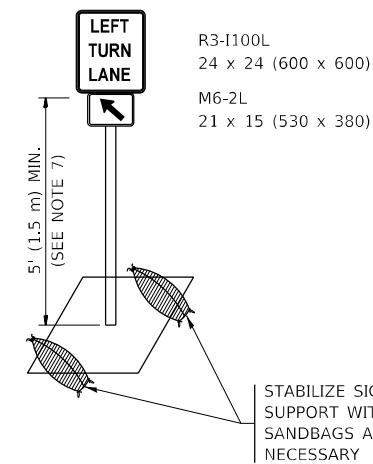
FIGURE 2

LEGEND

- WORK AREA
- LANE OPEN TO TRAFFIC
- ARROW BOARD
- TYPE I OR II BARRICADE OR DRUM WITH STEADY BURN LIGHT
- DRUM WITH STEADY BURN LIGHT
- SIGN ASSEMBLY
- TYPE I OR II CHECK BARRICADE WITH FLASHING LIGHT

NOTES:

1. A) WHEN "L" IS \leq THE STORAGE LENGTH OF THE TURN LANE (AS SHOWN IN FIG. 1), USE FIGURE 1.
B) WHEN "L" IS $>$ THE STORAGE LENGTH OF THE TURN LANE OR THE TURN LANE IS WITHIN THE LANE CLOSURE, USE FIGURE 2.
2. CONES MAY BE SUBSTITUTED FOR BARRICADES OR DRUMS AT HALF THE SPACING DURING DAY OPERATIONS. CONES SHALL BE A MINIMUM OF 28 (710) IN HEIGHT.
3. LIGHTS WILL NOT BE REQUIRED ON BARRICADES OR DRUMS FOR DAY OPERATIONS. ALL LIGHTS SHALL BE MONODIRECTIONAL.
4. REFLECTIVE TEMPORARY PAVEMENT MARKINGS SHALL BE PLACED THROUGHOUT THE BARRICADED AREAS OF EACH TURN BAY AS SHOWN WHERE THE CLOSURE TIME IS GREATER THAN FOURTEEN (14) DAYS.
5. THIS APPLICATION ALSO APPLIES WHEN WORK IS BEING PERFORMED IN THE RIGHT LANE(S) AND THE RIGHT TURN BAY IS TO REMAIN OPEN. UNDER THIS CONDITION, "RIGHT TURN LANE" R3-1100R 24 x 24 (600 x 600) AND M6-2R 21 x 15 (530 x 380) SHALL BE USED.
6. THESE CONTROLS SHALL SUPPLEMENT MAINLINE TRAFFIC CONTROL FOR LANE CLOSURES.
7. THE SIGNS SHALL BE MOUNTED ABOVE THE BARRICADES/DRUMS ON SEPARATE SIGN SUPPORTS THAT MEET NCHRP 350 OR MASH REQUIREMENTS.
8. TRAFFIC CONTROL AND PROTECTION AT TURN BAYS (TO REMAIN OPEN TO TRAFFIC) SHALL BE INCLUDED IN THE COST OF SPECIFIED TRAFFIC CONTROL STANDARDS OR ITEMS.



DETAIL A

All dimensions are in inches (millimeters) unless otherwise shown.

MODEL: Default
FILE NAME: p:\mllaneco\p\p\DOT\Documents\DOT - Office\Drawings - 1\Projects\118521\CADD\Drawings\Design\DCS\DCS.dgn

USER NAME = mllaneco	DESIGNED - T. RAMMACHER 09-08-94	REVISED - R. BORO 09-14-09
	DRAWN - A. HOUSEH 11-07-95	REVISED - A. SCHUETZE 07-01-13
PLOT SCALE = 100,0000' / in.	CHECKED - A. HOUSEH 10-12-96	REVISED - A. SCHUETZE 09-15-16
PLOT DATE = 8/10/2021	DATE - T. RAMMACHER 01-06-00	REVISED -

**STATE OF ILLINOIS
DEPARTMENT OF TRANSPORTATION**

**TRAFFIC CONTROL AND PROTECTION AT TURN BAYS
(TO REMAIN OPEN TO TRAFFIC)**

SCALE: NONE SHEET 1 OF 1 SHEETS STA. TO STA.

F.A.P. RTE.	SECTION	COUNTY	TOTAL SHEETS	SHEET NO.
330	2021-096-BP	COOK	29	28
TC-14		CONTRACT NO. 62P24		
ILLINOIS FED. AID PROJECT				

