

11-5-2021 LETTING ITEM 032

FOR INDEX OF SHEETS & STATE STANDARDS
SEE SHEET NO. 2

STATE OF ILLINOIS
DEPARTMENT OF TRANSPORTATION
DIVISION OF HIGHWAYS

**PROPOSED
HIGHWAY PLANS**

F.A.U. ROUTE 5773 (COLONA RD/AVE. OF THE CITIES)
SECTION D2 PP 2022-3
ROCK ISLAND COUNTY
C-92-098-21

F.A.U. RTE.	SECTION	COUNTY	TOTAL SHEETS	SHEET NO.
5773	**	ROCK ISLAND	4	1

**D2 PP 2022-3

CONTRACT NO. 64R28
D-92-072-21



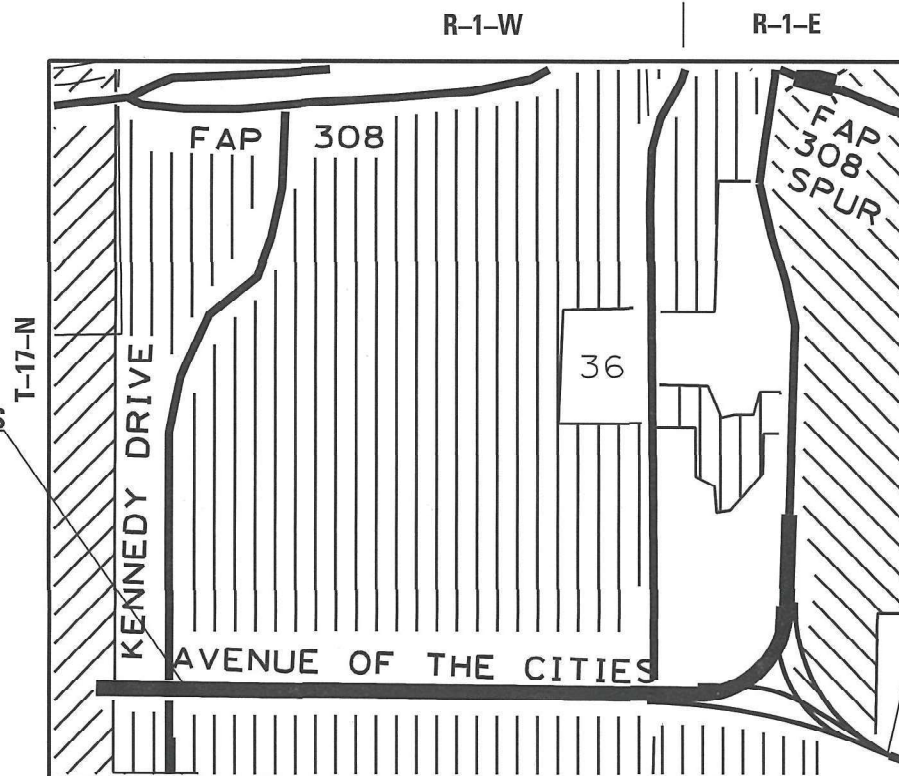
PROJECT ENGINEER: SCOTT KULLERSTRAND

SQUAD LEADER: LANCE NICKLAUS 815-284-5407

TOWNSHIP (SECTION):
MOLINE (1, 2)
HAMPTON (6)

J.U.L.I.E.
JOINT UTILITY LOCATION INFORMATION FOR EXCAVATION
1-800-892-0123

CONTRACT NO. 64R28



PROJECT BEGINS
MILE 3.30
KENNEDY DRIVE

PROJECT ENDS
MILE 5.27
HOSPITAL ROAD

GROSS LENGTH OF PROJECT = 10401 FOOT = 1.97 MILES
NET LENGTH OF PROJECT = 10401 FOOT = 1.97 MILES

STATE OF ILLINOIS
DEPARTMENT OF TRANSPORTATION
DIVISION OF HIGHWAYS

SUBMITTED August 09, 20 21

[Signature]
REGION ENGINEER

October 1 20 21
[Signature]
ENGINEER OF DESIGN AND ENVIRONMENT

October 21 21
[Signature]
DIRECTOR OF HIGHWAYS PROJECT IMPLEMENTATION 2

PRINTED BY THE AUTHORITY
OF THE STATE OF ILLINOIS

INDEX

- 1 Cover Sheet
- 2 Index of Sheets / State Standards
- 3 Summary of Quantities
- 4 General Notes

STATE STANDARDS

- 420001-09 PAVEMENT JOINTS
- 420701-03 PAVEMENT WELDED WIRE REINFORCEMENT
- 442101-09 CLASS B PATCHES
- 701006-05 OFF-ROAD OPERATIONS, 2L, 2W, 15' (4.5m) TO 24" (600mm) FROM PAVEMENT EDGE
- 701101-05 OFF-ROAD OPERATIONS, MULTILANE, 15'(4.5m) TO 24"(600mm) FROM PAVEMENT EDGE
- 701106-02 OFF-ROAD OPERATIONS, MULTILANE, MORE THAN 15'(4.5m) AWAY
- 701601-09 URBAN LANE CLOSURE, MULTILANE, 1W OR 2W WITH NONTRAVERSABLE MEDIAN
- 701606-10 URBAN SINGLE LANE CLOSURE, MULTILANE, 2W WITH MOUNTABLE MEDIAN
- 701701-10 URBAN LANE CLOSURE, MULTILANE INTERSECTION
- 701901-08 TRAFFIC CONTROL DEVICES
- 720011-01 METAL POST FOR SIGNS, MARKERS AND DELINEATORS
- 728001-01 TELESCOPING STEEL SIGN SUPPORT
- 729001-01 APPLICATIONS OF TYPES A AND B METAL POST (FOR SIGNS & MARKERS)

DISTRICT STANDARDS

- 94.2 Traffic Control & Protection at Turn Bays (To Remain Open to Traffic)
- 34.1 Work Zone Sign Details

SUMMARY OF QUANTITIES

URBAN

FAU 5773 (COLONA RD/AVENUE OF THE CITIES)
SECTION D2 PP 2022-3
ROCK ISLAND COUNTY
CONTRACT #64R28
SHEET 3 OF 4

100% State
0006

CODE NO.	ITEM	UNIT	TOTAL QUANTITY
44200050	WELDED WIRE REINFORCEMENT	SQ. YDS.	1,870
44200970	CLASS B PATCHES, TYPE II 10"	SQ. YDS.	1,217
44200974	CLASS B PATCHES, TYPE III 10"	SQ. YDS.	1,480
44200976	CLASS B PATCHES, TYPE IV 10"	SQ. YDS.	390
44201299	DOWEL BARS 1 1/2"	EACH	4860
44213200	SAW CUT	FOOT	11722
44213204	TIE BARS 3/4"	EACH	957
67100100	MOBILIZATION	L SUM	1
70102625	TRAFFIC CONTROL AND PROTECTION, STANDARD 701606	L SUM	1
70102630	TRAFFIC CONTROL AND PROTECTION, STANDARD 701601	L SUM	1
70102635	TRAFFIC CONTROL AND PROTECTION, STANDARD 701701	L SUM	1
70103815	TRAFFIC CONTROL SURVEILLANCE	CAL DAY	15
70106800	CHANGEABLE MESSAGE SIGN	CAL MO	4

GENERAL NOTES

Closed expansion joints on jointed pavements shall be re-established during the patching operations. Class B Patches - when the pavement requires patching at the location of the expansion joint, a new joint should be established using a dowelled expansion patch as shown on Highway Standard 442101. When the joint is closed, but does not require patching, an expansion joint may be formed by sawing the pavement and filling the saw cut with a preformed expansion joint filler meeting the requirements of Section 1051 of the Standard Specifications as shown on Standard 420001.

When laying out for patching, the minimum distance between new patches (saw cut to saw cut) shall be 15 feet. When patch spacing is less than 15 feet, the pavement between patches shall also be removed and replaced.

FILE NAME = 64R28 GN.DOCX	USER NAME =	DESIGNED - Engineering Systems	REVISED -	STATE OF ILLINOIS DEPARTMENT OF TRANSPORTATION	GENERAL NOTES	ROUTE	SECTION	COUNTY	TOTAL SHEETS	SHEET NO.	
		DRAWN -	REVISED -			FAU	D2 PP 2022-3	ROCK ISLAND		1	
	PLOT SCALE =	CHECKED -	REVISED -			5773	CONTRACT NO. 64R28				
	PLOT DATE = 8/6/2021 8:51 AM	DATE - 7/29/2021 10:38 AM	REVISED -	SCALE:	SHEET NO.	OF	SHEETS	STA.	TO STA.	ILLINOIS	FED. AID PROJECT