

CODE NO.	ITEM	UNIT	TOTAL QUANTITY	CONSTRUCTION CODE			
				80% FEDERAL 20% STATE	80% FEDERAL 20% STATE	80% FEDERAL 20% STATE	100% IDNR
				ROADWAY	SAFETY	BRIDGE	PARK ROADS
				0004	0021	0010	0005
				RURAL	RURAL	S.N. 006-0189	RURAL
20100110	TREE REMOVAL (6 TO 15 UNITS DIAMETER)	UNIT	60	60			
20100210	TREE REMOVAL (OVER 15 UNITS DIAMETER)	UNIT	77	77			
20200100	EARTH EXCAVATION	CU YD	1435	1240			195
* 20201200	REMOVAL AND DISPOSAL OF UNSUITABLE MATERIAL	CU YD	2890	2890			
20400800	FURNISHED EXCAVATION	CU YD	17248	17248			
① 20700220	POROUS GRANULAR EMBANKMENT	CU YD	47	47			
25000115	SEEDING, CLASS 1B	ACRE	0.75	0.75			
25000210	SEEDING, CLASS 2A	ACRE	2.5	2.5			
25000300	SEEDING, CLASS 3	ACRE	0.25	0.25			
25000400	NITROGEN FERTILIZER NUTRIENT	POUND	261	261			
25000500	PHOSPHORUS FERTILIZER NUTRIENT	POUND	261	261			
25000600	POTASSIUM FERTILIZER NUTRIENT	POUND	261	261			
25100630	EROSION CONTROL BLANKET	SQ YD	13739	13739			
25100635	HEAVY DUTY EROSION CONTROL BLANKET	SQ YD	310	310			
28000250	TEMPORARY EROSION CONTROL SEEDING	POUND	868	868			

*= SPECIALTY ITEM

* DENOTES SPECIAL PROVISION REQUIRED

MODEL: Default
FILE NAME: 20230027.09 IDOT D3 PFB 194-027_W09 IL 92 over Hennepin Canal Feeder Design Prelim Plotsheet1D366126-ah-500.dgn



USER NAME = RGall	DESIGNED - RG	REVISED -
	DRAWN - CS	REVISED -
PLOT SCALE = 40,0000 ' / in.	CHECKED - JH	REVISED -
PLOT DATE = 8/3/2021	DATE -	REVISED -

STATE OF ILLINOIS
DEPARTMENT OF TRANSPORTATION

IL 92 OVER HENNEPIN CANAL FEEDER
SUMMARY OF QUANTITIES

SCALE: SHEET OF SHEETS STA. TO STA.

F.A.P. RTE.	SECTION	COUNTY	TOTAL SHEETS	SHEET NO.
587	(135B-1)BR	BUREAU	84	4
			CONTRACT NO. 66H26	
		ILLINOIS FED. AID PROJECT		

CODE NO.	ITEM	UNIT	TOTAL QUANTITY	CONSTRUCTION CODE			
				80% FEDERAL 20% STATE	80% FEDERAL 20% STATE	80% FEDERAL 20% STATE	100% IDNR
				ROADWAY	SAFETY	BRIDGE	PARK ROADS
				0004	0021	0010	0005
				RURAL	RURAL	S.N. 006-0189	RURAL
40800025	BITUMINOUS MATERIALS (PRIME COAT)	POUND	4778	2391	813		1574
40800050	INCIDENTAL HOT-MIX ASPHALT SURFACING	TON	240	120	41		79
42000070	PAVEMENT CONNECTOR (HMA) FOR BRIDGE APPROACH SLAB	SQ YD	86	86			
42400200	PORTLAND CEMENT CONCRETE SIDEWALK 5 INCH	SQ FT	399		399		
42400800	DETECTABLE WARNINGS	SQ FT	41		41		
44000100	PAVEMENT REMOVAL	SQ YD	4036	4036			
44000200	DRIVEWAY PAVEMENT REMOVAL	SQ YD	43	43			
44000600	SIDEWALK REMOVAL	SQ FT	944	944			
48101500	AGGREGATE SHOULDERS, TYPE B 6"	SQ YD	625	625			
48203029	HOT-MIX ASPHALT SHOULDERS, 8"	SQ YD	348	348			
50100100	REMOVAL OF EXISTING STRUCTURES	EACH	1			1	
50102400	CONCRETE REMOVAL	CU YD	10	10			
50104100	CONCRETE HEADWALL REMOVAL	EACH	4	4			
50105220	PIPE CULVERT REMOVAL	FOOT	70	70			
50200100	STRUCTURE EXCAVATION	CU YD	93			93	



* DENOTES SPECIAL PROVISION REQUIRED

MODEL: Default; FILE NAME: 20230027.09 IDOT D3 PFB 194-027_W09 IL 92 over Hennepin Canal Feeder Design Prelim Plotsheet1D366126-ah-500.dgn



USER NAME = RGall	DESIGNED - RG	REVISED -
	DRAWN - CS	REVISED -
PLOT SCALE = 40,0000 ' / in.	CHECKED - JH	REVISED -
PLOT DATE = 8/3/2021	DATE -	REVISED -

**STATE OF ILLINOIS
DEPARTMENT OF TRANSPORTATION**

**IL 92 OVER HENNEPIN CANAL FEEDER
SUMMARY OF QUANTITIES**

SCALE: SHEET OF SHEETS STA. TO STA.

F.A.P. RTE. 587	SECTION (135B-1)BR	COUNTY BUREAU	TOTAL SHEETS 84	SHEET NO. 6
CONTRACT NO. 66H26			ILLINOIS FED. AID PROJECT	

CODE NO.	ITEM	UNIT	TOTAL QUANTITY	CONSTRUCTION CODE			
				80% FEDERAL 20% STATE ROADWAY	80% FEDERAL 20% STATE SAFETY	80% FEDERAL 20% STATE BRIDGE	100% IDNR PARK ROADS
				0004	0021	0010	0005
				RURAL	RURAL	S.N. 006-0189	RURAL
50300225	CONCRETE STRUCTURES	CU YD	77.3			77.3	
50300255	CONCRETE SUPERSTRUCTURE	CU YD	300.3			300.3	
50300260	BRIDGE DECK GROOVING	SQ YD	580			580	
50300300	PROTECTIVE COAT	SQ YD	754			754	
50301350	CONCRETE SUPERSTRUCTURE (APPROACH SLAB)	CU YD	96.3			96.3	
50800205	REINFORCEMENT BARS, EPOXY COATED	POUND	122,166	166		122,000	
50901720	BICYCLE RAILING	FOOT	219		219		
51100300	SLOPE WALL 6 INCH	SQ YD	147			147	
51200900	FURNISHING PRECAST PRESTRESSED CONCRETE PILES 14"	FOOT	560			560	
51200959	FURNISHING METAL SHELL PILES 14" X 0.312"	FOOT	290			290	
51202305	DRIVING PILES	FOOT	850			850	
51203100	TEST PILES PRECAST PRESTRESSED CONCRETE	EACH	2			2	
51203200	TEST PILE METAL SHELLS	EACH	2			2	
51204650	PILE SHOES	EACH	12			12	

MODEL: Default
 FILE NAME: 2102027.08 DDT D3 FTB 194-027 W09 IL 92 over Hennepin Canal FeederDCNDesign\Project\Drawings\10366126-att-500.dgn

* DENOTES SPECIAL PROVISION REQUIRED



USER NAME = RGall	DESIGNED - RG	REVISED -
	DRAWN - CS	REVISED -
PLOT SCALE = 40.0000' / in.	CHECKED - JH	REVISED -
PLOT DATE = 8/3/2021	DATE -	REVISED -

**STATE OF ILLINOIS
DEPARTMENT OF TRANSPORTATION**

**IL 92 OVER HENNEPIN CANAL FEEDER
SUMMARY OF QUANTITIES**

SCALE: SHEET OF SHEETS STA. TO STA.

F.A.P. RTE.	SECTION	COUNTY	TOTAL SHEETS	SHEET NO.
587	(135B-1)BR	BUREAU	84	7
			CONTRACT NO. 66H26	
ILLINOIS FED. AID PROJECT				

DRAINAGE REMOVAL SCHEDULE		
STATDN	OFFSET	PIPE CULVERT REMOVAL (FOOT)
224+77.37	39.07'LT	30
237+65.19	34.24'LT	40
TOTAL		70

TREE REMOVAL SCHEDULE					
ROUTE	STATDN	OFFSET	MS DIAMETER (NCH)	TREE REMOVAL (6 TO 15 UNITS DIAMETER) (UNIT)	TREE REMOVAL (OVER 15 UNITS DIAMETER) (UNIT)
L 92	227+57.66	56.3'LT	MS (6,5)	11	
L 92	229+93.76	54.2'LT		8	
L 92	230+06.90	77.7'LT		11	
L 92	232+87.50	48.5'RT		15	
L 92	233+20.31	84.0'RT		15	
L 92	235+34.10	54.9'RT			38
L 92	235+76.44	55.8'RT			39
TOTAL				60	77

ROADWAY REMOVAL SCHEDULE										
FROM STATDN	OFFSET	TO STATDN	OFFSET	PAVEMENT REMOVAL (SQ YD)	DRIVEWAY PAVEMENT REMOVAL (SQ YD)	SIDEWALK REMOVAL (SQ FT)	GUARDRAIL REMOVAL (FOOT)	CABLE ROAD GUARD REMOVAL (FOOT)	APPROACH SLAB REMOVAL (SQ YD)	REMOVAL OF EXISTING WOOD BOLLARDS (EACH)
223+45.00	13.5'LT/RT	230+10.20	13.5'LT/RT	2018						
230+10.20		230+30.20							60	
231+19.70		231+39.70							60	
231+39.70	13.5'LT/RT	238+10.00	13.5'LT/RT	2018						
229+22.83	38.5'LT	229+58.30	140.2'LT			944				
229+39.83	18.1'RT	230+56.57	15.8'RT				117			
229+40.00	18.0'LT				43					
229+64.82	18.6'LT	230+56.57	15.7'LT				92			
229+44.59	122.0'LT									1
229+50.05	120.7'LT									1
229+55.55	120.3'LT									1
230+93.16	15.8'LT	231+97.47	19.0'LT				104			
230+93.64	15.7'RT	231+84.84	18.9'RT				92			
229+56.56	111.03'LT	229+73.91	210.37'LT					102		
230+16.92	117.79'LT	230+21.96	163.48'LT					57		
TOTAL				4036	43	944	405	159	120	3

MODEL: D:\efk\11-2007\09 IDOT D3 PFB 194-027 W09 IL 92 over Hennepin Canal Feeder\DCM\Design\Prim\Plotsheets\10266126-shr-schedule.dgn
 FILE NAME: 21-2007\09 IDOT D3 PFB 194-027 W09 IL 92 over Hennepin Canal Feeder\DCM\Design\Prim\Plotsheets\10266126-shr-schedule.dgn

EFK Moen
Civil Engineering Design

USER NAME = JBerggren	DESIGNED - RG	REVISED -
	DRAWN - CS	REVISED -
PLOT SCALE = 40.0000' / in.	CHECKED - JH	REVISED -
PLOT DATE = 9/28/2021	DATE -	REVISED -

**STATE OF ILLINOIS
DEPARTMENT OF TRANSPORTATION**

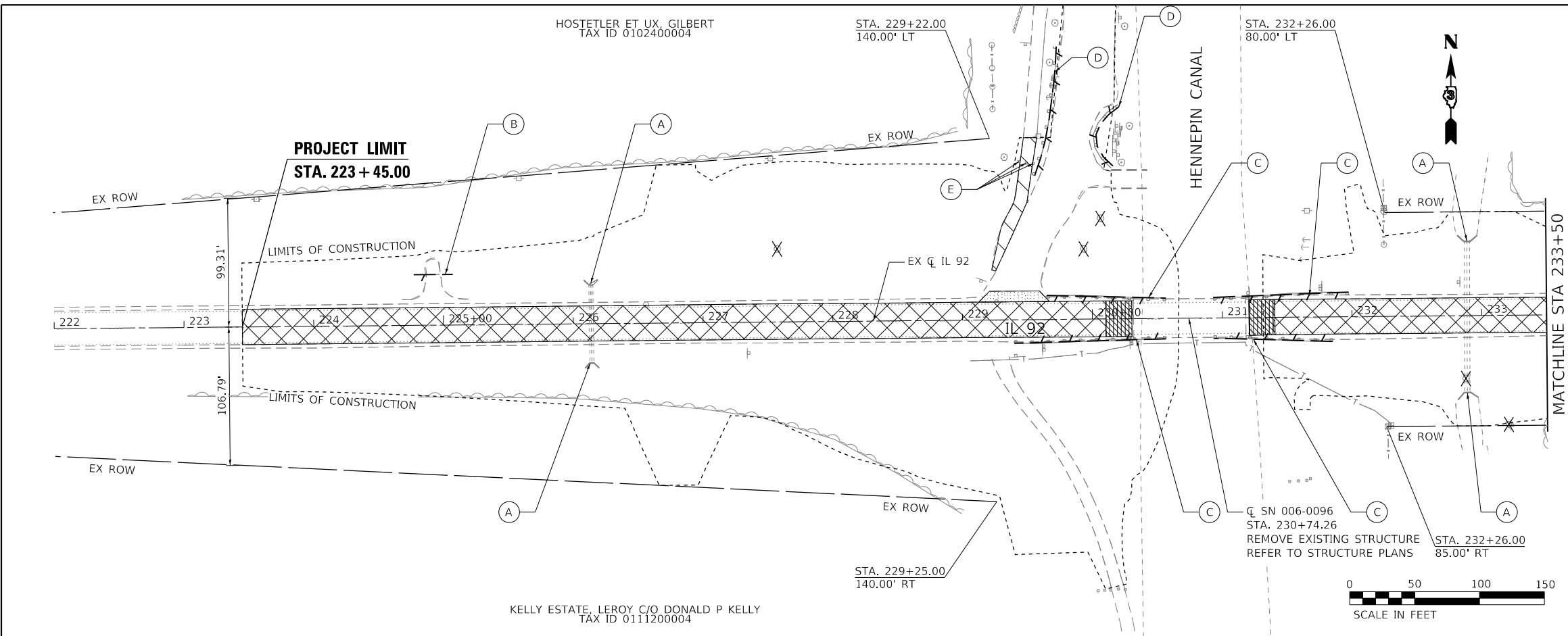
IL 92 OVER HENNEPIN CANAL FEEDER SCHEDULES			
SCALE:	SHEET	OF	SHEETS
	STA.	TO	STA.

F.A.P. RTE.	SECTION	COUNTY	TOTAL SHEETS	SHEET NO.
587	(135B-1)BR	BUREAU	84	14
			CONTRACT NO. 66H26	
		ILLINOIS FED. AID PROJECT		

PLAN	SURVEYED	DATE
	PLOTTED	BY
	ALIGNMENT CHECKED	
	GRADES CHECKED	
	STRUCTURE NOTATIONS CHECKED	
	NOTE BOOK NO.	
	CADD FILE NAME	

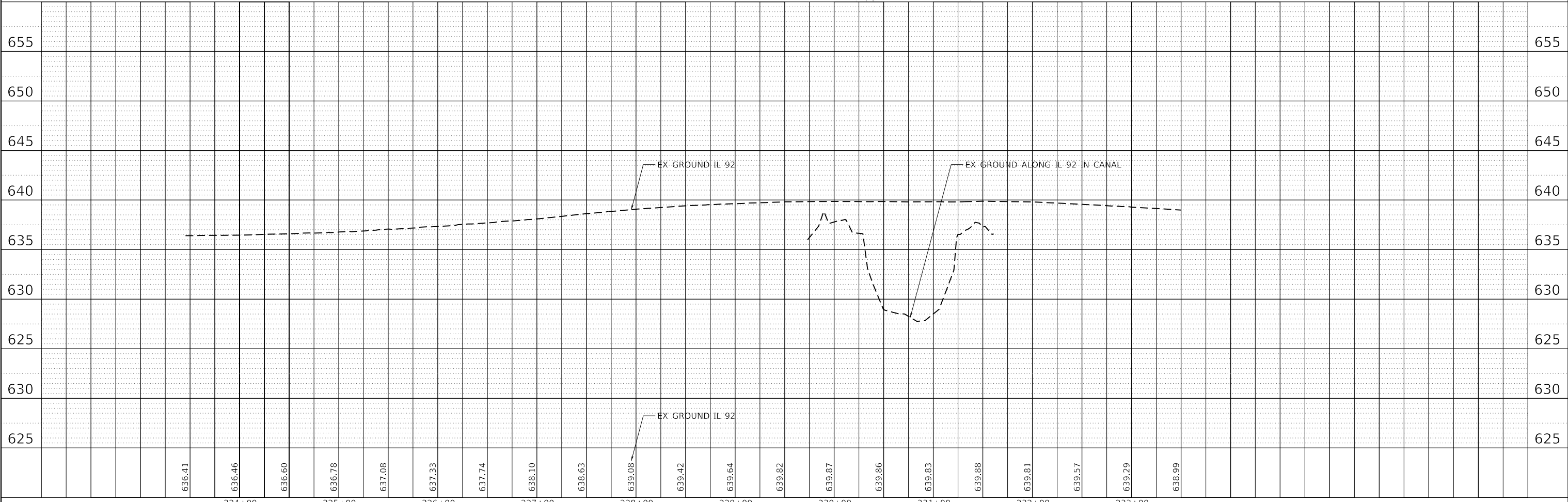
PROFILE	SURVEYED	DATE
	PLOTTED	BY
	GRADES CHECKED	
	STRUCTURE NOTATIONS CHECKED	
	NOTE BOOK NO.	
	CADD FILE NAME	

MODEL: Default
 FILE NAME: Z:\2007\09\DDT 03 PFB 194427\W09 IL 92 over Hennepin Canal Feeder\DDT\Design\Plan\194427-09-IL-92-over-hennepin-canal-feeder-removal.dgn



- LEGEND**
- PAVEMENT REMOVAL (44000100)
 - DRIVEWAY PAVEMENT REMOVAL (44000200)
 - SIDEWALK REMOVAL (44000600)
 - APPROACH SLAB REMOVAL (Z0004552)
 - TREE REMOVAL
 - LINEAR REMOVAL
 - SEE DRAINAGE PLAN AND DETAILS
 - PIPE CULVERT REMOVAL (50105220)
 - GUARDRAIL REMOVAL (63200310)
 - CABLE ROAD GUARD REMOVAL (63200400)
 - REMOVAL OF EXISTING WOOD BOLLARDS (X0324056)

- NOTES**
- SEE SIGNING PLAN FOR REMOVAL AND RELOCATION OF EXISTING SIGNS



EFK Moen
Civil Engineering Design

USER NAME = jBerggren	DESIGNED -	REVISED -
PLOT SCALE = 100.0000' / in.	DRAWN -	REVISED -
PLOT DATE = 9/28/2021	CHECKED -	REVISED -
	DATE -	REVISED -

STATE OF ILLINOIS
DEPARTMENT OF TRANSPORTATION



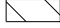
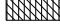







IL 92 OVER HENNEPIN CANAL FEEDER
REMOVAL PLAN

SCALE: SHEET OF SHEETS STA. TO STA.

F.A.P. RTE.	SECTION	COUNTY	TOTAL SHEETS	SHEET NO.
587	(135B-1)BR		84	22
CONTRACT NO. 66H26			ILLINOIS FED. AID PROJECT	

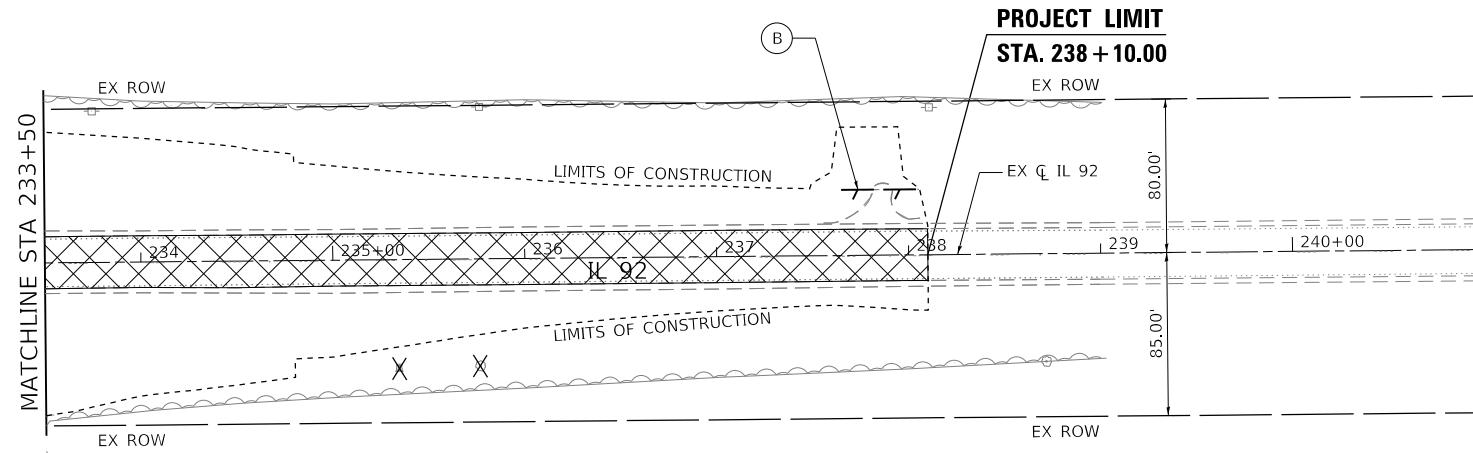


LEGEND

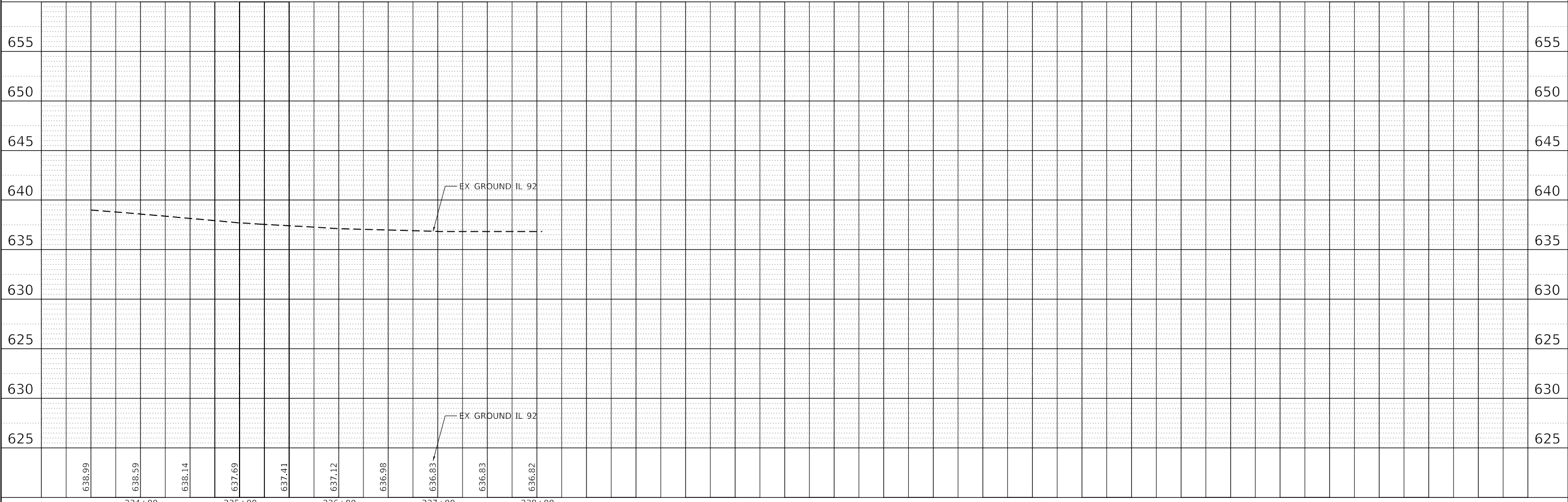
-  PAVEMENT REMOVAL (44000100)
-  DRIVEWAY PAVEMENT REMOVAL (44000200)
-  SIDEWALK REMOVAL (44000600)
-  APPROACH SLAB REMOVAL (Z0004552)
-  TREE REMOVAL
-  LINEAR REMOVAL
-  SEE DRAINAGE PLAN AND DETAILS
-  PIPE CULVERT REMOVAL (50105220)
-  GUARDRAIL REMOVAL (63200310)
-  CABLE ROAD GUARD REMOVAL (63200400)
-  REMOVAL OF EXISTING WOOD BOLLARDS (X0324056)

NOTES

1. SEE SIGNING PLAN FOR REMOVAL AND RELOCATION OF EXISTING SIGNS



KELLY GANG, LLC C/O RONALD L KELLY
TAX ID 0111200003



PLAN	SURVEYED	DATE
	PLOTTED	
	ALIGNMENT CHECKED	
	GRADES CHECKED	
	STRUCTURE NOTATIONS CHECKED	
	NOTE BOOK NO.	
	CADD FILE NAME	

PROFILE	SURVEYED	DATE
	PLOTTED	
	GRADES CHECKED	
	STRUCTURE NOTATIONS CHECKED	
	NOTE BOOK NO.	
	CADD FILE NAME	

MODEL: Default
FILE NAME: Z:\2007\09 DDT 03 PFB 194427 W09 IL 92 over Hennepin Canal Feeder\DOT\Design\Profile\194427-03-IL92-removal.dgn

EFK•Moen
Civil Engineering Design

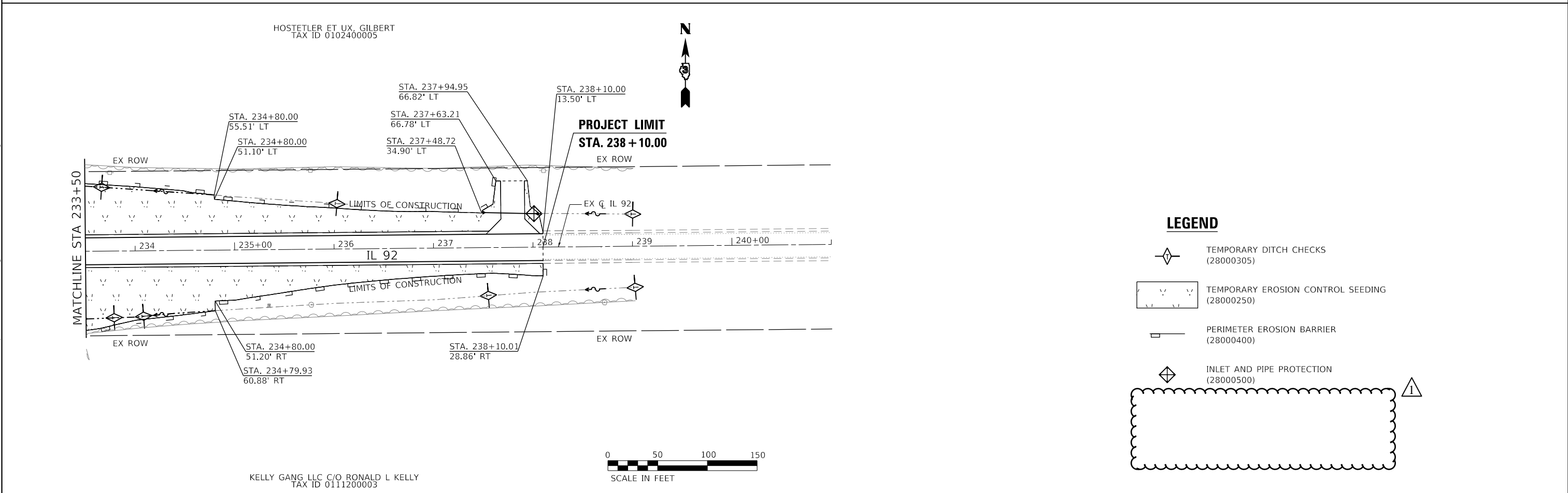
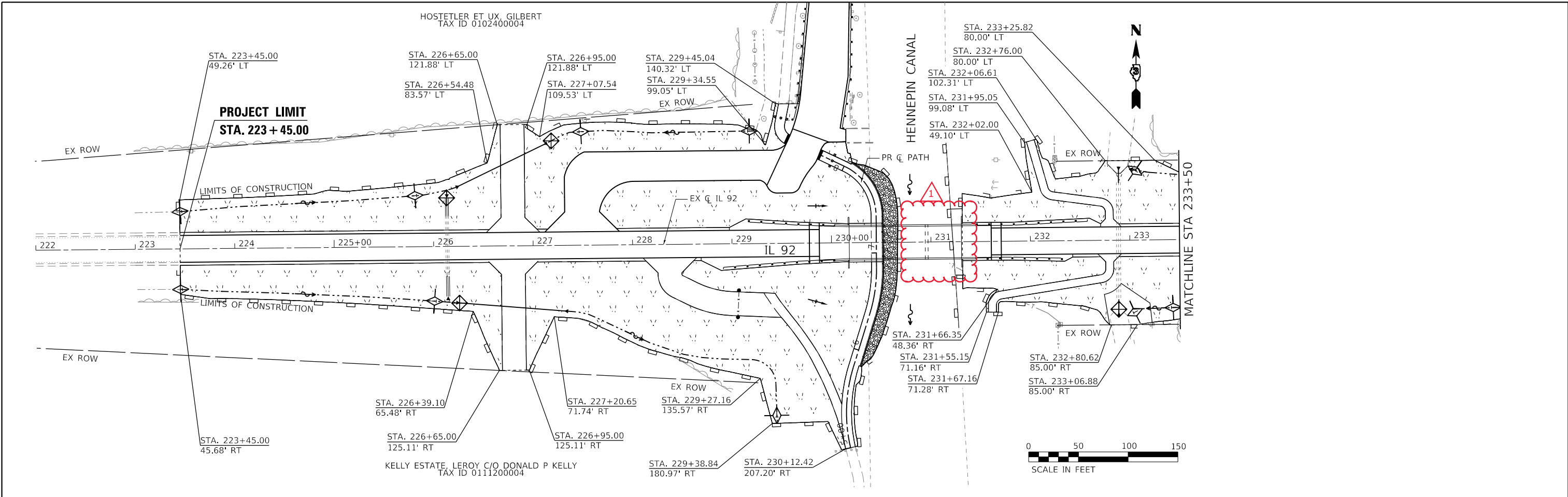
USER NAME = jBerggren	DESIGNED -	REVISED -
PLOT SCALE = 100.0000' / in.	DRAWN -	REVISED -
PLOT DATE = 9/28/2021	CHECKED -	REVISED -
	DATE -	REVISED -

STATE OF ILLINOIS
DEPARTMENT OF TRANSPORTATION

IL 92 OVER HENNEPIN CANAL FEEDER
REMOVAL PLAN

SCALE: SHEET OF SHEETS STA. TO STA.

F.A.P. RTE.	SECTION	COUNTY	TOTAL SHEETS	SHEET NO.
587	(135B-1)BR	BUREAU	84	23
CONTRACT NO. 66H26				
ILLINOIS FED. AID PROJECT				



LEGEND

- TEMPORARY DITCH CHECKS (28000305)
- TEMPORARY EROSION CONTROL SEEDING (28000250)
- PERIMETER EROSION BARRIER (28000400)
- INLET AND PIPE PROTECTION (28000500)

MODEL: Default
 FILE NAME: 20230027.09 IDOT D3 PFB 194-027_W09_IL_92_over_Hennepin_Canal_Feeder\DCM\Design\Plan\Plotsheets\1D366126-shr-eros.dgn

EFK Moen
Civil Engineering Design

USER NAME = RGall	DESIGNED - RG	REVISED -
PLOT SCALE = 100,0000' / in.	DRAWN - CS	REVISED -
PLOT DATE = 10/20/2021	CHECKED - JH	REVISED -
	DATE -	REVISED -

**STATE OF ILLINOIS
DEPARTMENT OF TRANSPORTATION**

**IL 92 OVER HENNEPIN CANAL FEEDER
EROSION CONTROL PLAN**

F.A.P. RTE. 587	SECTION (135B-1)BR	COUNTY BUREAU	TOTAL SHEETS 84	SHEET NO. 31
CONTRACT NO. 66H26				
ILLINOIS FED. AID PROJECT				

DRAINAGE NOTES

STATION, OFFSET, AND INVERT ELEVATION SHALL REFER TO THE INLET/OUTLET OF EACH END SECTION. THE SLOPE OF EACH END SECTION SHALL MATCH THE PIPE SLOPE.

* SEE DETAILS FOR ADDITIONAL INFORMATION

P P E SCHEDULE											
P P E NO	SLOPE %	FROM		TO		POROUS GRANULAR EMBANKMENT CU YD	PRECAST CONCRETE BOX CULVERTS 3' X 3' FOOT	P P E CULVERTS, CLASS A, TYPE 1 - 18" FOOT	P P E CULVERTS, CLASS A, TYPE 1 - 36" FOOT	P P E CULVERTS, CLASS A, TYPE 2 - 36" FOOT	P P E CULVERTS, CLASS C, TYPE 2 - 48" FOOT
		STRUC NO	INVERT	STRUC NO	INVERT						
P1	0.3%	1	631.19	EX	631.11	23	17				
P2	0.3%	EX	630.88	2	630.81	24	18				
P3	0.3%	3A	631.51	3B	631.23			86			
P4	0.1%	4A	630.62	4B	630.47				97		
P5	0.4%	5	626.54	EX	626.47						10
P6	0.4%	EX	625.96	6	625.89						10
P7	0.5%	7A	633.57	7B	633.29			45			
TOTAL						47	35	45	86	97	20

STRUCTURE SCHEDULE							
STRUC NO	STA	O S	NV.	PRECAST REINFORCED CONCRETE FLARED END SECTIONS 18"	PRECAST REINFORCED CONCRETE FLARED END SECTIONS 36"	METAL FLARED END SECTIONS 48"	BOX CULVERT END SECTIONS, * CULVERT NO. 1
				EA	EA	EA	EA
1	226+13.60	52.47'LT	631.19				1
2	226+14.26	54.06'RT	630.81				1
3A	227+14.91	103.00'LT	631.51		1		
3B	226+22.93	59.26'LT	631.23		1		
4A	226+22.26	56.54'RT	630.62		1		
4B	227+34.60	66.30'RT	630.47		1		
5	232+89.18	73.93'LT	626.54			1	
6	232+88.29	75.90'RT	625.89			1	
7A	238+05.84	33.50'LT	633.57	1			
7B	237+49.49	35.28'LT	633.29	1			
TOTAL				2	4	2	2

UNDERDRAN SCHEDULE			
UNDERDRAN NUMBER	P P E UNDERDRAN 4" (SPECIAL)	P P E UNDERDRAN TYPE 3	CONCRETE HEADW ALL FOR P P E DRANS
	FOOT	FOOT	EACH
U-101	15	213	1
U-102	15	401	1
U-103	15	425	1
U-104	15	237	1
U-105	15	289	1
U-106	15	289	1
U-107	15	296	1
U-108	15	351	1
TOTAL	120	2501	8

MODEL: Default; FILE NAME: 20230027.09 IDOT D3 PFB 194-027_W09_IL_92_over_Hennepin_Canal_Feeder\DCM\Design\Drawings\Plotsheets\10266126_sht-Prop.dwg

EFK Moen
Civil Engineering Design

USER NAME = JBerggren	DESIGNED - RG	REVISED -
PLOT SCALE = 100.0000' / in.	DRAWN - CS	REVISED -
PLOT DATE = 9/29/2021	CHECKED - JH	REVISED -
	DATE -	REVISED -

**STATE OF ILLINOIS
DEPARTMENT OF TRANSPORTATION**

**IL 92 OVER HENNEPIN CANAL FEEDER
PROPOSED DRAINAGE SCHEDULES**

SCALE: SHEET OF SHEETS STA. TO STA.

F.A.P. RTE.	SECTION	COUNTY	TOTAL SHEETS	SHEET NO.
587	(135B-1)BR	BUREAU	84	32
CONTRACT NO. 66H26				
ILLINOIS FED. AID PROJECT				

GENERAL NOTES

Reinforcement bars designated (E) shall be epoxy coated.

Layout of the slope protection system may be varied to suit ground conditions in the field as directed by the Engineer.

The embankment configuration shown shall be the minimum that must be placed and compacted prior to construction of the abutments.

The Contractor shall make allowance for the deflection of forms, shrinkage and settlement of falsework, in addition to allowance for dead load deflection. Forms for deck slab shall be removed prior to placement of bridge approach slab.

INDEX OF SHEETS

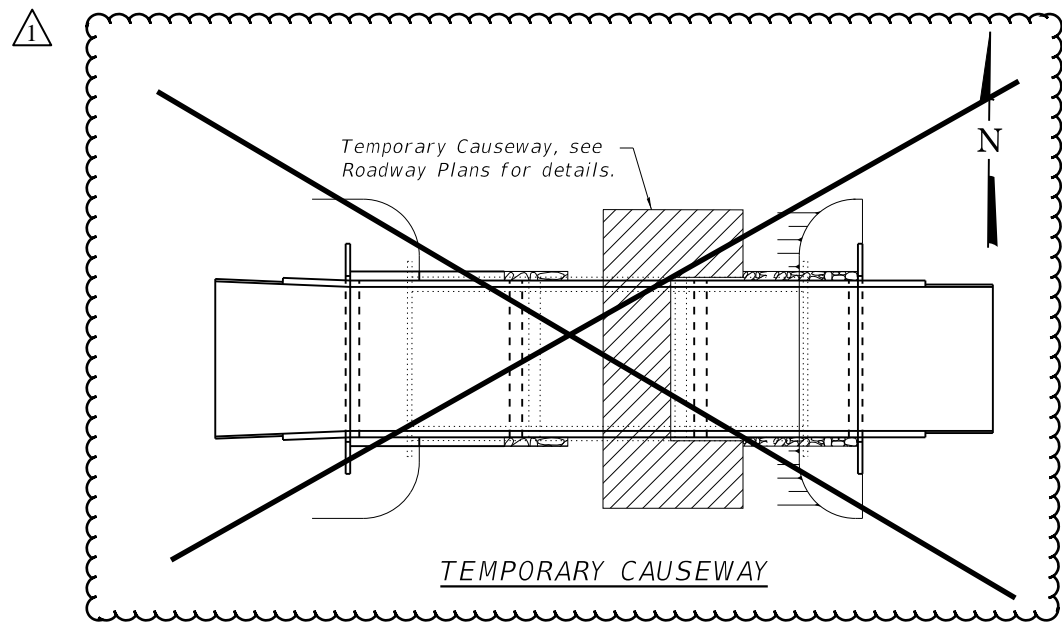
1. General Plan & Elevation
2. General Data
3. Top of Slab Elevations
4. Top of Slab Elevations
5. Top of West Approach Slab Elevations
6. Top of East Approach Slab Elevations
7. Superstructure
8. Superstructure
9. Superstructure Details
10. West Bridge Approach Slab Details
11. West Bridge Approach Slab Details
12. East Bridge Approach Slab Details
13. East Bridge Approach Slab Details
14. West Abutment
15. East Abutment
16. Piers
17. Metal Shell Pile Details
18. Precast Pile Details
19. Concrete Parapet Slipforming Option
20. Soil Boring Logs
21. Soil Boring Logs

STATION 230+74.26
 BUILT 20 BY
 STATE OF ILLINOIS
 F.A.P. RTE. 587
 SEC. (135B-1)BRR
 LOADING HL-93
 STRUCTURE NO. 006-0189

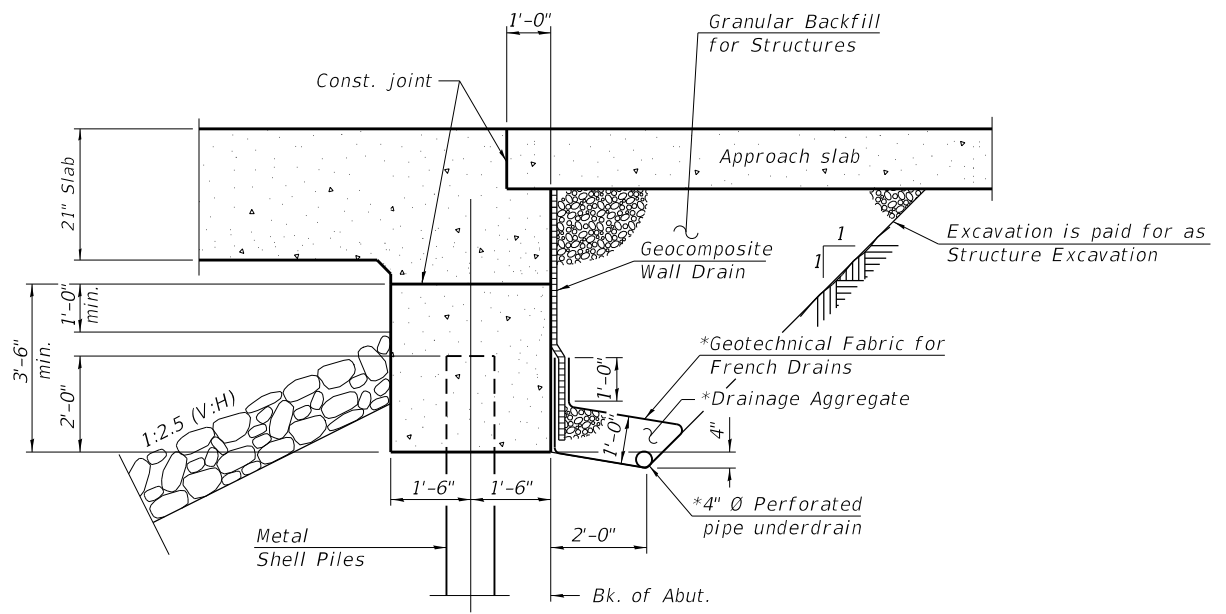
NAME PLATE
 See Std. 515001

TOTAL BILL OF MATERIAL

ITEM	UNIT	SUPER	SUB	TOTAL
Stone Riprap, Class A3	Sq Yd		52	52
Stone Dumped Riprap, Class A3	Sq Yd		187	187
Filter Fabric	Sq Yd		52	52
Removal Of Existing Structures	Each	1		1
Structure Excavation	Cu Yd		93	93
Concrete Structures	Cu Yd		77.3	77.3
Concrete Superstructure	Cu Yd	300.3		300.3
Bridge Deck Grooving	Sq Yd	580		580
Protective Coat	Sq Yd	754		754
Concrete Superstructure (Approach Slab)	Cu Yd	96.3		96.3
Reinforcement Bars, Epoxy Coated	Pound	109,500	12,500	122,000
Slope Wall 6 Inch	Sq Yd		147	147
Furnishing Precast Prestressed Concrete Piles 14"	Foot		560	560
Furnishing Metal Shell Piles 14" X 0.312"	Foot		290	290
Driving Piles	Foot		850	850
Test Piles Precast Prestressed Concrete	Each		2	2
Test Pile Metal Shells	Each		2	2
Pile Shoes	Each		12	12
Name Plates	Each	1		1
Granular Backfill For Structures	Cu Yd		71	71
Geocomposite Wall Drain	Sq Yd		49	49
Pipe Underdrains For Structures 4"	Foot		124	124



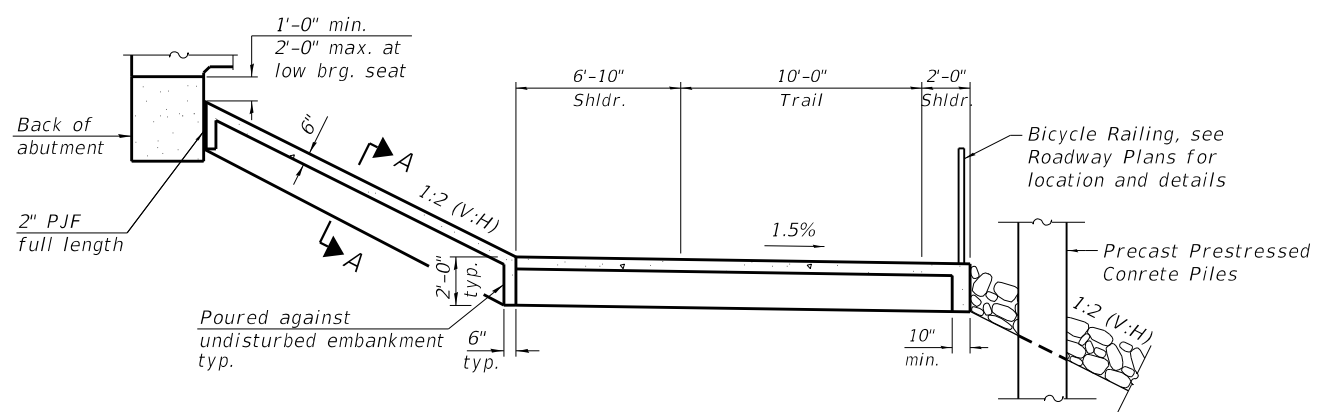
TEMPORARY CAUSEWAY



SECTION THRU INTEGRAL ABUTMENT

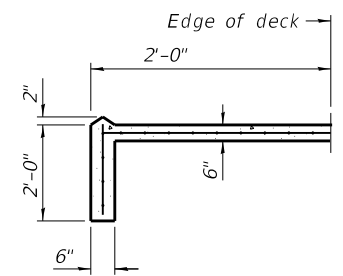
*Included in the cost of Pipe Underdrains for Structures. (See Special Provisions)

Note:
 All drainage system components shall extend to 2'-0" from the end of each wingwall except an outlet pipe shall extend until intersecting with the side slopes. The pipes shall drain into concrete headwalls. (See Article 601.05 of the Standard Specifications and Highway Standard 601101).



SECTION THRU CONCRETE SLOPEWALL

Slope wall shall be reinforced with welded wire fabric, 6" x 6" - W4.0 x W4.0, weighing 58 lbs. per 100 sq. ft.



SECTION A-A

MODEL: Default
 FILE NAME: \\SERVER18\Projects\554120027.09 IDOT D3 PTB 194-027 WO9 IL 92 over Hennepin Canal Feeder\Bridges\Final\Plotsheets\0060189-56H26-002-General_Data.dgn
 9/29/2021 9:12:10 AM

EFK•Moen
 Civil Engineering Design

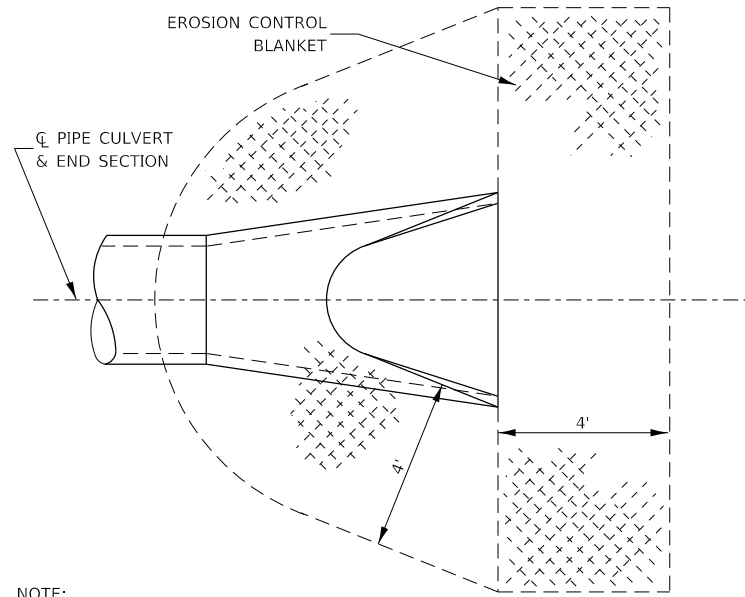
USER NAME = ABenz	DESIGNED - ACB	REVISED -
PLOT SCALE =	CHECKED - CDL	REVISED -
PLOT DATE = 9/29/2021	DRAWN - ACB	REVISED -
	CHECKED - CDL	REVISED -

STATE OF ILLINOIS
DEPARTMENT OF TRANSPORTATION

GENERAL DATA
STRUCTURE NO. 006-0189

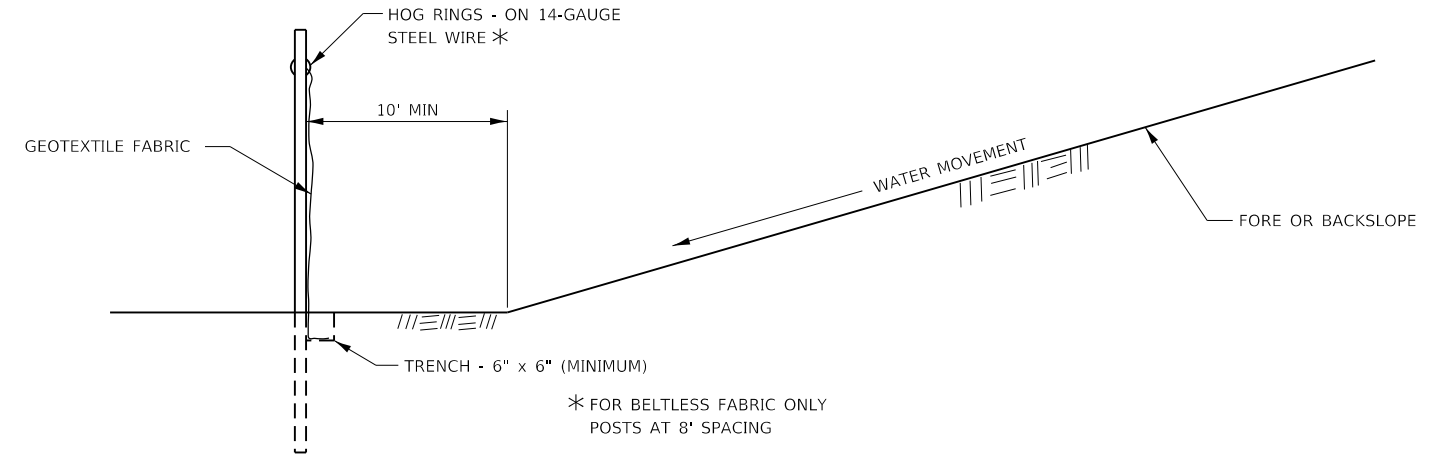
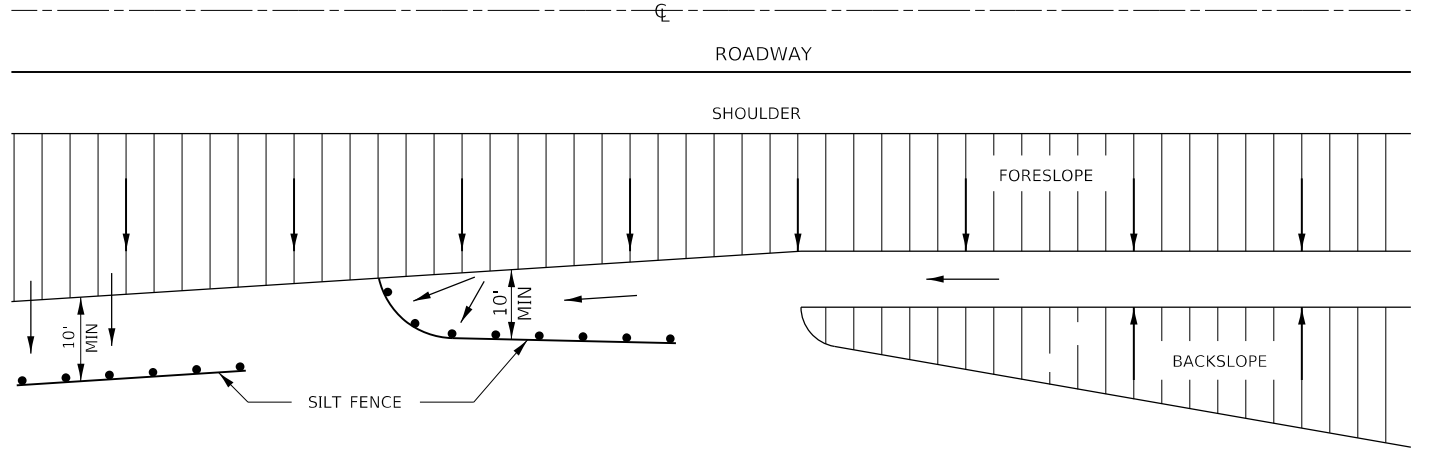
SHEET 2 OF 21 SHEETS

F.A.P. RTE. 587	SECTION (135B-1)BRR	COUNTY BUREAU	TOTAL SHEETS 84	SHEET NO. 39
CONTRACT NO. 66H26				
ILLINOIS FED. AID PROJECT				



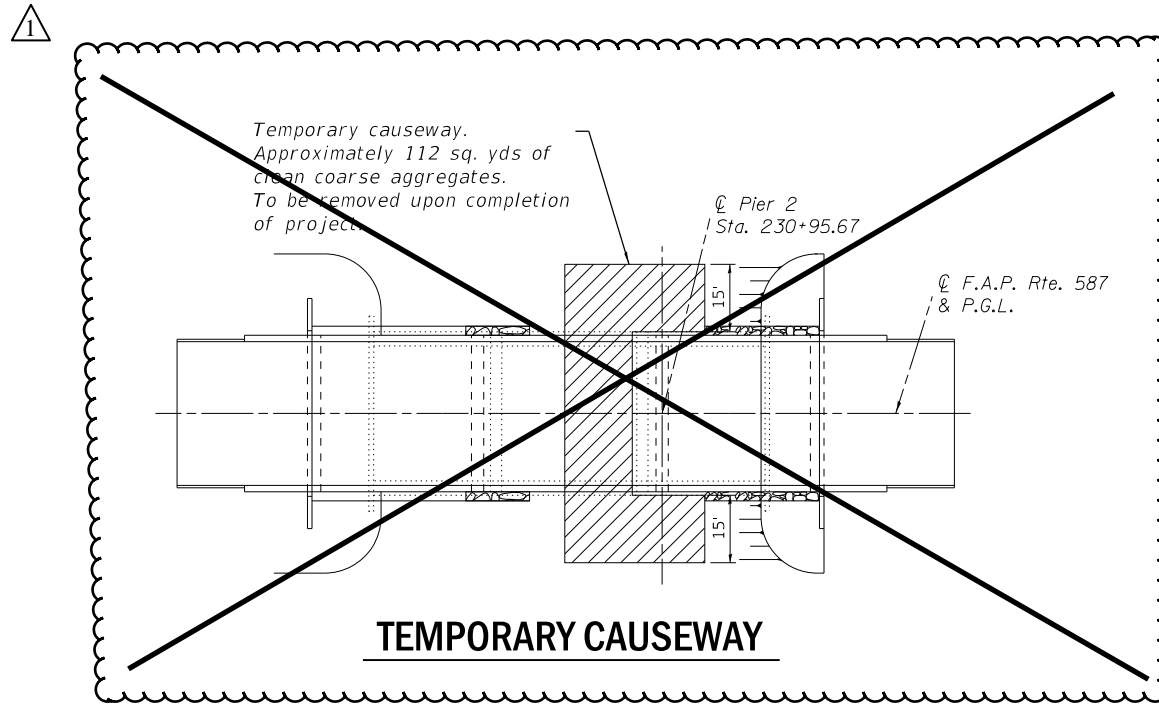
NOTE:
TO BE USED AT ALL END SECTIONS

**DETAIL OF EROSION CONTROL BLANKET
LINING AROUND END SECTION**



DETAILS OF SILT FENCE

**EROSION CONTROL DETAILS
FOR SILT FENCE**



TEMPORARY CAUSEWAY

MODEL: Default
FILE NAME: 2/3/2007,09 IDOT D3 PFB, 194-027, W09, IL 92, over Hennepin Canal Feeder\DCM\Design\Prim\PlatSheet1\0366126-shr-D3detail.dgn

EFK Moen
Civil Engineering Design

USER NAME = RGall	DESIGNED - RG	REVISED -
	DRAWN - CS	REVISED -
PLOT SCALE = 100,0000' / in.	CHECKED - JH	REVISED -
PLOT DATE = 8/3/2021	DATE -	REVISED -

**STATE OF ILLINOIS
DEPARTMENT OF TRANSPORTATION**

IL 92 OVER HENNEPIN CANAL FEEDER DETAILS				
SCALE:	SHEET	OF	SHEETS	STA. TO STA.

F.A.P. RTE. 587	SECTION (135B-1)BR	COUNTY BUREAU	TOTAL SHEETS 84	SHEET NO. 60
CONTRACT NO. 66H26				
ILLINOIS FED. AID PROJECT				