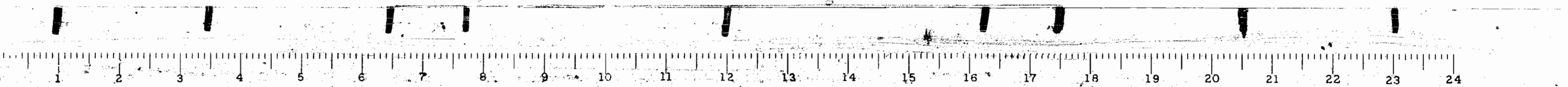


RT. FA1-80

SEC. 06-3B



INDEX OF SHEETS

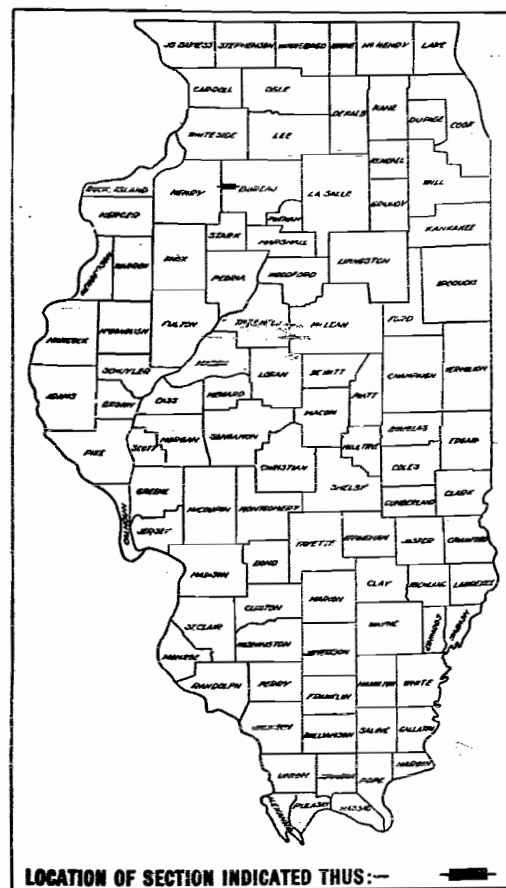
| | |
|--------------|--|
| 1 | COVER SHEET, INDEX OF SHEETS, SUMMARY OF QUANTITIES. |
| 2, 2A | PLAN AND PROFILE, TYPICAL SECTION |
| 3 | GENERAL PLAN AND ELEVATION, AND GENERAL NOTES |
| 4 | SUPERSTRUCTURE |
| 5 | BEARING AND EXPANSION GUARD DETAILS |
| 6 | METAL HANDRAIL AND END POSTS |
| 7 | ABUTMENTS AND WINGS |
| 8 | PIERS 1 & 2 |
| 9 | PILES |
| 10 | BORINGS |
| 11 | CHANNEL CROSS SECTIONS - STA. 3+00 TO STA. 6+25 |
| 12 | CHANNEL CROSS SECTIONS - STA. 6+55 TO STA. 7+55 |
| 13 | CROSS SECTIONS - STA. 757+00 TO STA. 763+00 |
| 14, 14A, 14B | CROSS SECTIONS - STA. 763+21 TO STA. 792+00 |
| 16 | INLET, SPECIAL TYPE 1, STD. 2113 NAME PLATE, DETAILS OF CAST IRON FRAME, SPECIAL TYPE 1 AND TYPE 2 |
| 16 | STD. 2113-1, STD. 1619S-CLOSED LID |
| 16A | STD. 2153-2 |

STATE OF ILLINOIS
 DEPARTMENT OF PUBLIC WORKS AND BUILDINGS
 DIVISION OF HIGHWAYS
 PLANS FOR PROPOSED
 FEDERAL AID HIGHWAY

| | | | | |
|--|-------|--------|--------------|-----------|
| FEDERAL AID ROUTE NO. | SEC. | COUNTY | TOTAL SHEETS | SHEET NO. |
| FAL 80 | 06-3B | BUREAU | 16 | 1 |
| S. P. D. REG. NO. 4 ILLINOIS PROJECT I-80-2(7)50 | | | | |

SCALES
 PLAN 1 INCH = 100 FT.
 PROFILE, HOR. 1 INCH = 100 FT.
 PROFILE, VERT. 1 INCH = 10 FT.
 CROSS-SECTIONS 1 INCH = 5 FT.

F.A.I. ROUTE 80 SECTION 06-3B
 PROJECT I-80-2(7)50
 BUREAU COUNTY



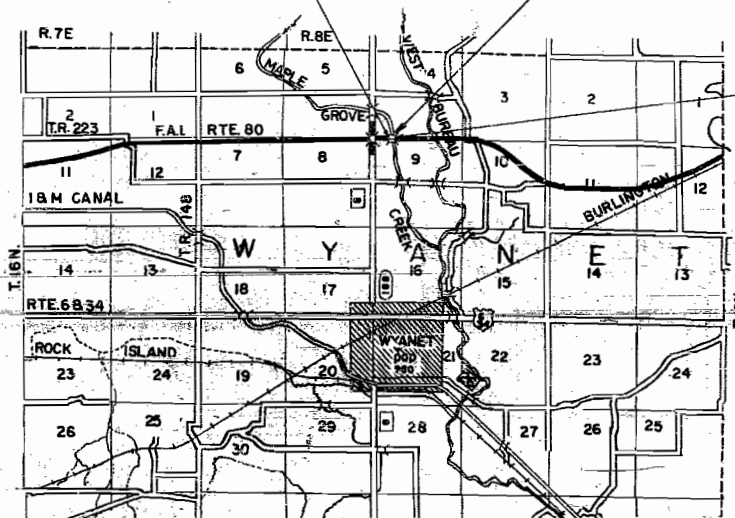
SUMMARY OF QUANTITIES

| Quantities | Unit | Item | Code No. |
|------------|----------|---|----------|
| 28 | IN. DIA. | TREE REMOVAL (6 TO 15 INCH DIAMETER) | 010001 |
| 352 | IN. DIA. | TREE REMOVAL (OVER 15 INCH DIAMETER) | 010002 |
| 4,009 | CU. YD. | CHANNEL EXCAVATION | 012001 |
| 870 | CU. YD. | CLASS A EXCAVATION FOR STRUCTURES | 060001 |
| 480 | CU. YD. | CLASS B EXCAVATION FOR STRUCTURES | 060002 |
| 4.6 | CU. YD. | HANDRAIL CONCRETE | 062001 |
| 319.2 | CU. YD. | CLASS A CONCRETE | 062002 |
| 789.6 | CU. YD. | CLASS X CONCRETE | 062003 |
| 24,100 | POUNDS | FURNISHING AND ERECTING STRUCTURAL STEEL | 054001 |
| 448 | LIN. FT. | FURNISHING AND ERECTING METAL HANDRAIL | 056001 |
| 179,200 | POUNDS | REINFORCEMENT BARS | 059001 |
| 360 | LIN. FT. | FURNISHING CREOSOTED PILES UP TO 20 FEET | 060004 |
| 380 | LIN. FT. | DRIVING TIMBER PILES | 060008 |
| 750 | LIN. FT. | DRIVING CONCRETE PILES | 060043 |
| 750 | EACH | FURNISHING CONCRETE PILES | 060044 |
| 2 | EACH | TEST PILES CONCRETE | 060047 |
| 8 | EACH | NAME PLATES | 081001 |
| 80 | LIN. FT. | STORM SEWER, TYPE 2, R.C.P., CLASS B, 18" | 082012 |
| 1 | EACH | INLETS, SPECIAL, TYPE 1 | 075160 |
| 1,550 | SQ. YD. | SLOPE WALL 6 INCH | 083003 |
| 7,436 | CU. YD. | EARTH EXCAVATION | 011001 |

PROJECT I-80-2(7)51
 SECTION 06-3B
 BEGINS STA. 762+68.42

SECTION 06-3B
 INCLUDES THE CONSTRUCTION OF TWO PARALLEL 3-SPAN
 R.C. DECK BRIDGES (CARRYING F.A.I. ROUTE
 80 OVER MAPLE GROVE CREEK) ON R.C. PIERS
 AND ABUTMENTS, SPANS 2 AT 33'-3" AND
 1 AT 43'-2" AT STA. 763+25

SECTION 06-3B
 ENDS STA. 763+81.58



ROAD CLASSIFICATION
 1970-T-70

ENTIRE PROJECT INSPECTED AND APPROVED AS TO POLICY.

DATE May 16, 1961

DISTRICT ENGINEER W. W. Hensel

STATE OF ILLINOIS
 DEPARTMENT OF PUBLIC WORKS AND BUILDINGS
 DIVISION OF HIGHWAYS

SUBMITTED: May 16, 1961
W. W. Hensel

EXAMINED: August 22, 1961
A. W. ...

PASSED: August 22, 1961
...

APPROVED: August 22, 1961
...

APPROVED: August 22, 1961
...

DEPARTMENT OF COMMERCE
 BUREAU OF PUBLIC ROADS

APPROVED _____ DATE _____

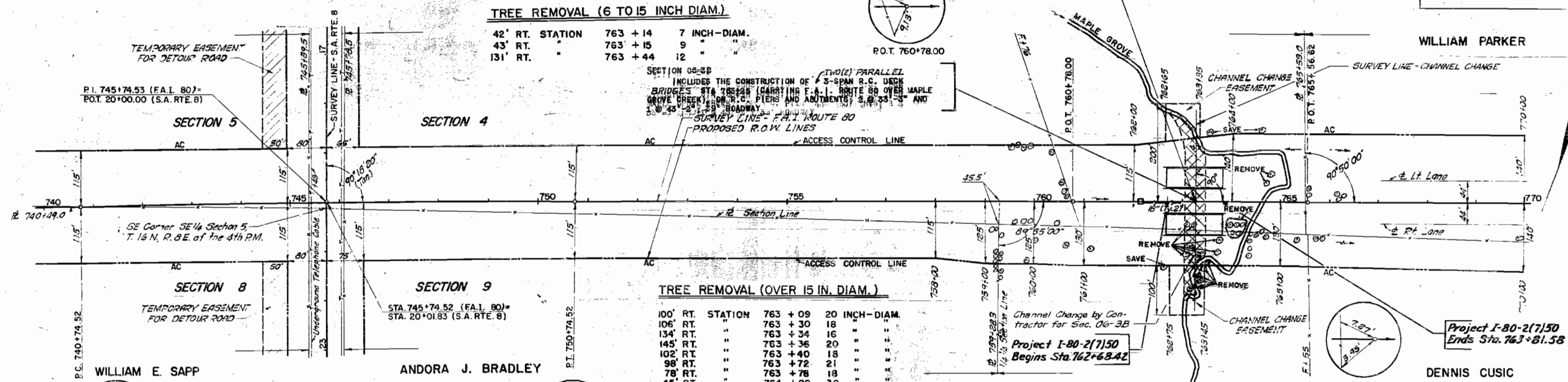
DIVISION ENGINEER _____

LAYOUT
 SCALE: 1 INCH = 1 MILE
 NET LENGTH: 113.16 FT. @ 0.021 MILE

ANNA OLDS

MILFORD, ROBERT & AUSTIN OLDS

| | | | | |
|--------|----|--------|----|---|
| 80 | 36 | BUREAU | 16 | 2 |
| 740+00 | | 770+00 | | |



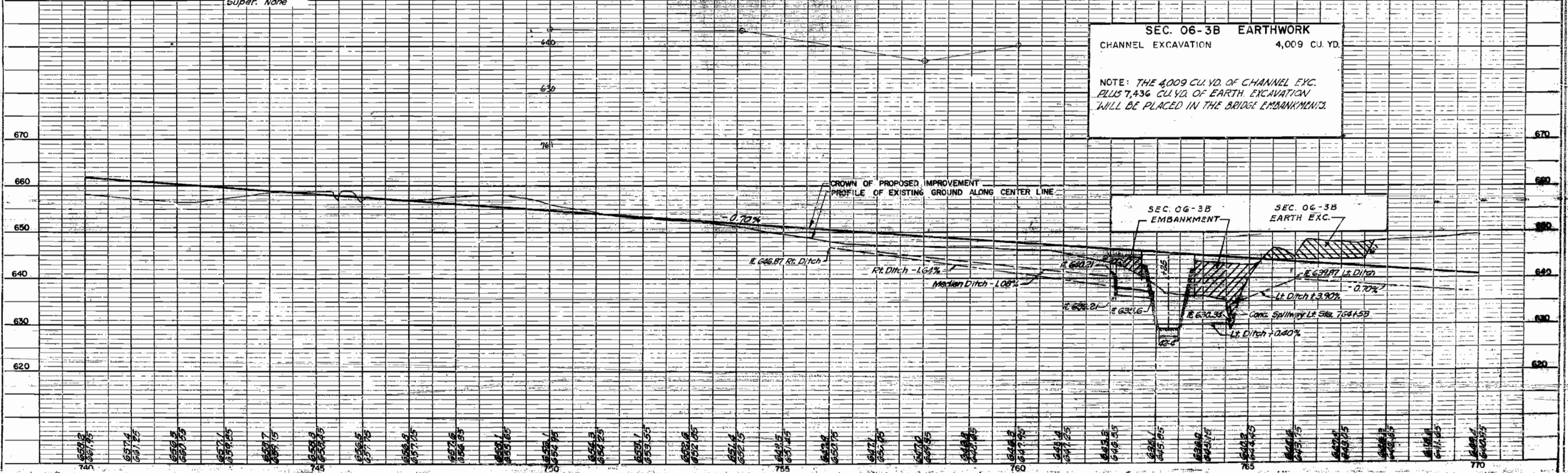
CURVE DATA
 P.I. 745+74.53
 L. 0°50'00"
 D. 0°05'00"
 T. 500.01'
 L. 1,000.00'
 E. 1.83'
 R. 68,754.9'
 Super. Name

ONE SIGN STD. 2/53-2 SHALL BE ERRECTED AS DIRECTED BY THE ENGINEER



| BENCHMARK | ELEVATION | DESCRIPTION |
|-----------|-----------|--|
| B.M. 59 | 660.31 | Spk. #11 in Telephone Pole 255 Ft. Rt. Sta. 746+03. |
| B.M. 60 | 647.77 | Spk. #11 in Root of 30" Elm 268 Ft. Rt. Sta. 754+32. |

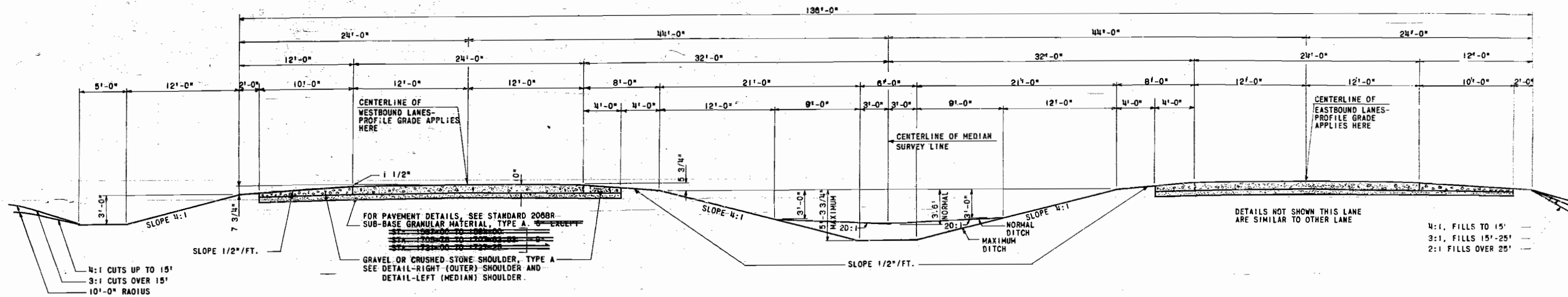
SEC. 06-3B EARTHWORK
 CHANNEL EXCAVATION 4,009 CU. YD.
 NOTE: THE 4,009 CU. YD. OF CHANNEL EXC. PLUS 7,436 CU. YD. OF EARTH EXCAVATION WILL BE PLACED IN THE BRIDGE EMBANKMENTS.



| | |
|----------|--|
| DATE | |
| BY | |
| REVISION | |
| NO. | |

| | |
|----------|--|
| DATE | |
| BY | |
| REVISION | |
| NO. | |

| | | | | |
|-----------------------|---------|------------------|--------------|-----------|
| ROUTE NO. | SECTION | COUNTY | TOTAL SHEETS | SHEET NO. |
| FAI-80 | 06-3B | BUREAU | 16 | 2-A |
| ILL. ROAD DIST. NO. 7 | | ILLINOIS PROJECT | | |



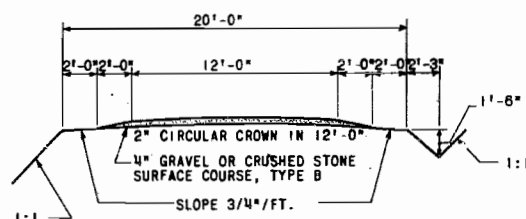
F.A.I.-80
SCALE: 1"=5'-0"

NOTE:
EARTHWORK QUANTITIES HAVE BEEN REVISED ON SUMMARY OF QUANTITIES TO INCLUDE THE CHANGES BROUGHT ABOUT BY THE ADOPTION OF THE NEW SHOULDER DESIGN. STATION CROSS SECTION TEMPLATES AND END AREAS HAVE NOT BEEN ADJUSTED TO PROVIDE FOR THE NEW SHOULDERS.

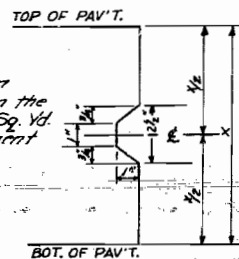
SHOULDERS ARE TO BE CONSTRUCTED IN ACCORDANCE WITH TYPICAL SECTION AND DETAILS SHOWN, AND ALL THE EARTHWORK OUTSIDE THE LIMITS OF THE SHOULDER SHALL CONFORM TO THE STATION CROSS SECTIONS.

THE NOMINAL THICKNESSES FOR SUB-BASE GRANULAR MATERIAL AND GRAVEL OR CRUSHED STONE SHOULDERS TYPE A; BASE AND SURFACE COURSES ARE SHOWN ON THE TYPICAL SECTIONS, STANDARDS, SCHEDULES OR SPECIAL DETAILS. THE CONSTRUCTED THICKNESSES OF THE ABOVE ITEMS SHALL NOT BE LESS THAN 90 PER CENT OF THE NOMINAL THICKNESS AT ANY LOCATION.

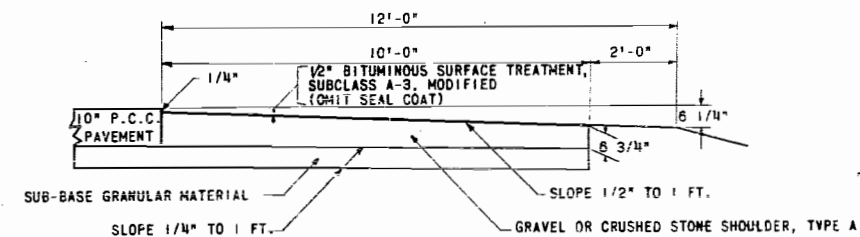
NOTE: The cost of furnishing and installing the construction joint shall be included in the contract unit price per Sq. Yd. for P.C. Concrete Pavement 10"



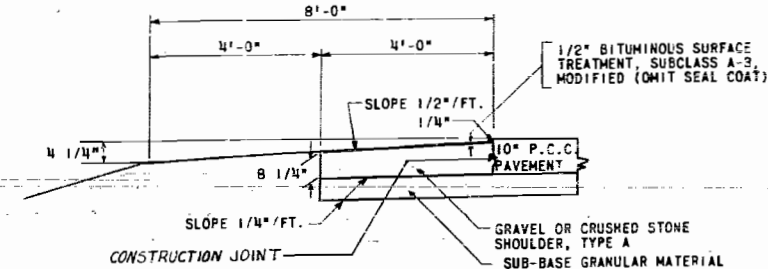
ACCESS ROAD



DETAIL CONSTRUCTION JOINT
NO SCALE



DETAIL - RIGHT (OUTER) SHOULDER
SCALE: 1"=2'-0"



DETAIL - LEFT (MEDIAN) SHOULDER
SCALE: 1"=2'-0"

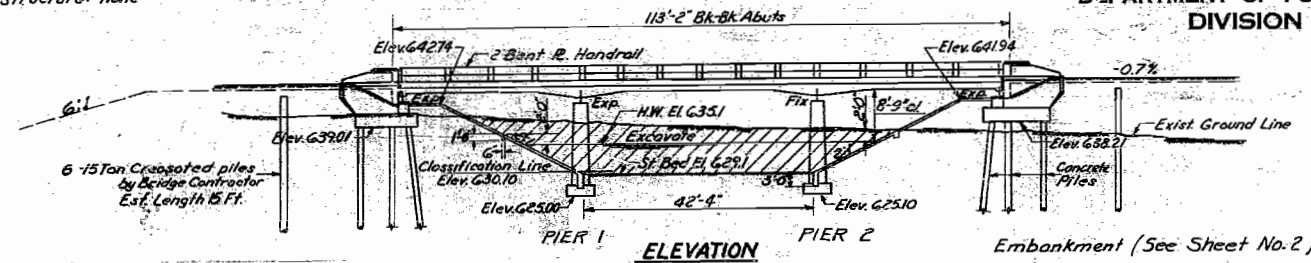
FOR REFERENCE ONLY

| REVISIONS | | TYPICAL SECTIONS | | DRAWN BY | DATE |
|-----------|--|--|---------------|-------------|------|
| 1 | | STATE OF ILLINOIS | | RW-RLN/6224 | |
| 2 | | DEPARTMENT OF PUBLIC WORKS AND BUILDINGS | | CHIEF BY | DATE |
| 3 | | DIVISION OF HIGHWAYS | | MLL/62346 | |
| 4 | | F.A.I. - 80 | SECTION 06-3B | PROJECT NO. | |
| 5 | | BUREAU | COUNTY | SHEET NO. | |
| 6 | | | | | |
| 7 | | | | | |
| 8 | | | | | |
| 9 | | | | | |
| 10 | | | | | |

B.M. Spike & Washer in roof of 30' Elm 268' R.R. Sta. 754+32
Elev. 647.77 (U.S.G.S. Datum)
Existing Structure: None

STATE OF ILLINOIS
DEPARTMENT OF PUBLIC WORKS & BUILDINGS
DIVISION OF HIGHWAYS

| ROUTE NO. | SECTION | COUNTY | TOTAL SHEETS | SHEET NO. |
|--|---------|--------|--------------|-----------|
| 66-38 | BUREAU | 16 | 3 | 8 SHEETS |
| F.A.I. 80 | | | | |
| F.A.I. ROAD DIST. NO. 7 | | | | |
| ALUMINUM FED. AID PROJECT: I-80-2(7)50 | | | | |

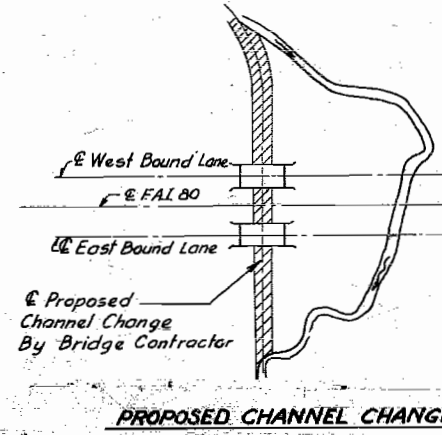
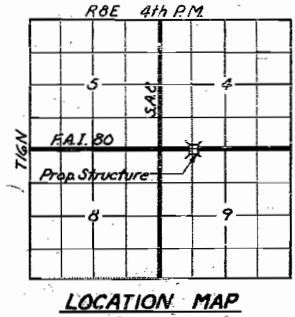
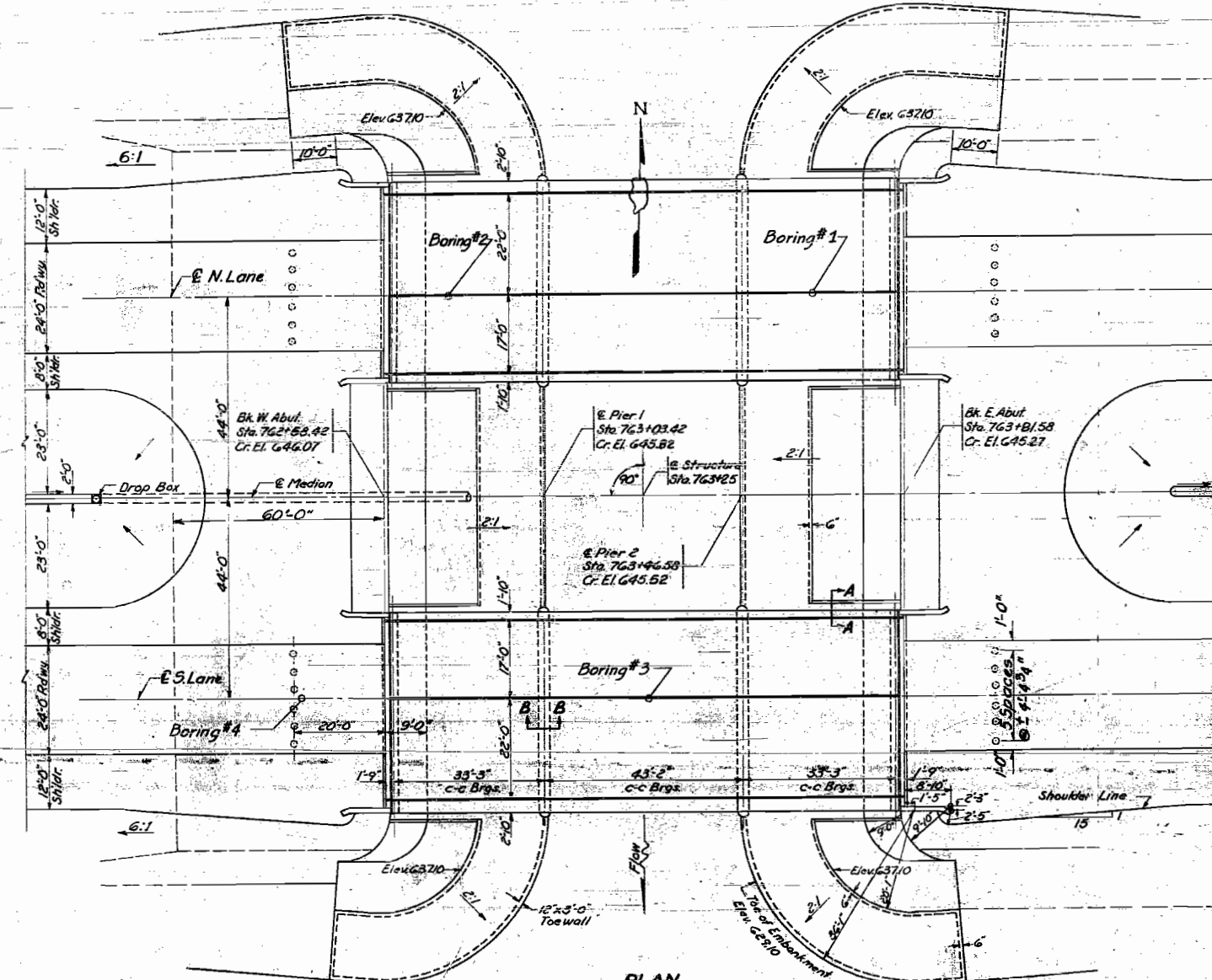


STATION 763+25
BUILT 196 BY
STATE OF ILLINOIS
F.A.I. RT. 80 SEC. 06-3B
F.A. PROJ. I-80-2(7)
LOADING H20-S16

NAME PLATE LETTERING
See Std. 2113

GENERAL NOTES

Class X concrete shall be used throughout except in piers and end posts.
Class A concrete shall be used in piers.
Handrail concrete shall be used in end posts.
The concrete floor slab shall be finished in accordance with Article 51.19 of the Standard Specifications.
Slope wall shall be reinforced with welded wire fabric G x G mesh, #4 wires, weighing 58# per 100 sq. ft.
All rollers, rockers, bearing plates, shim plates, lead plates, pintles and anchor bolts shall be fabricated and set in accordance with Article 51.15 of the Standard Specifications and are included in quantity of Structural Steel.
Expansion Guards shall be fabricated and erected in accordance with Article 51.13 (d) of the Standard Specifications and are included in quantity of Structural Steel.
Except as otherwise provided, all structural steel shall receive one shop coat of red lead paint and two field coats of aluminum paint. See Articles 56.1 to 56.5 inclusive of the Standard Specifications.
All paint shall be furnished and applied by the Contractor. Layout of slope wall may be varied to suit ground conditions in the field, as directed by the Engineer.
The Contractor shall drive 2 test piles in permanent locations as directed by the Engineer before ordering remainder of piles. One test pile at W. Abut. S. Bridge and one test pile at E. Abut. N. Bridge.
Wherever in these plans reference is made to the "Standard Specifications", it is understood to include the "Supplemental Specifications", effective April 2, 1962.

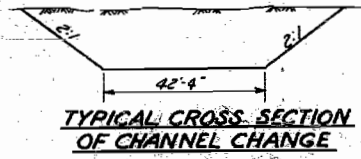


TOTAL BILL OF MATERIAL (2 BRIDGES)

| Item | Unit | Super | Sub | Total |
|-----------------------------------|----------|---------|--------|---------|
| Class A Concrete | Cu. Yds. | | 319.2 | 319.2 |
| Class X Concrete | Cu. Yds. | 568.2 | 171.6 | 739.8 |
| Handrail Concrete | Cu. Yds. | 4.6 | | 4.6 |
| Reinforcement Bars | Lbs. | 153,300 | 25,780 | 179,080 |
| Structural Steel | Lbs. | 28,100 | | 28,100 |
| Class A Excavation for Structures | Cu. Yds. | | 520 | 520 |
| Class B Excavation for Structures | Cu. Yds. | | 360 | 360 |
| Name Plates | Each | 2 | | 2 |
| Concrete Piles | Lin. Ft. | | 750 | 750 |
| Test Piles (Concrete) | Each | 2 | | 2 |
| Crested Piles | Lin. Ft. | | | 360 |
| Metal Handrail | Lin. Ft. | 446 | | 446 |
| Slope Wall (G) | Sq. Yds. | | | 1550 |
| Protective Coat | Sq. Yds. | 1146 | | 1146 |

WATERWAY INFORMATION

Drainage Area - 4720 Acres
Character - Rolling & Cultivated
Required Opening - (50 Yr. Fl.) - 290 Sq. Ft.
Present Opening - Sq. Ft.
Proposed Opening - 290 Sq. Ft.
Ordinary Water Elev. 629.9
Low Water Elev. 629.3



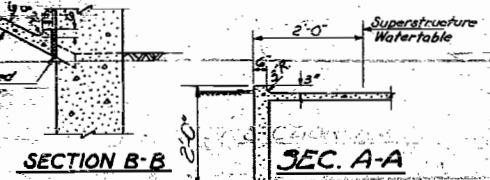
DESIGN STRESSES
fe - 14,000 psi. Super F-306
ve - 75 psi. Footings
fe - 20,000 psi. Reinf.
fe - 18,000 psi. Struct.
D-10
Max. Hoisting Pressure - 245 tons/ft.
LOADING H20-S16-44 ALTERNATE

NOTE: N & S Bridges identical.

PROJ. I-80-2(7)50
GENERAL PLAN & ELEVATION
MAPLE GROVE CREEK
F.A.I. RT. 80 SEC. 06-3B
BUREAU COUNTY
STA. 763+25

DESIGNED Wm. C. Keene
CHECKED F.M. JACOBSEN
DRAWN J.L. Armstrong
CHECKED F.H.U.
EXAMINED [Signature]
PASSED [Signature]
APPROVED R.R. Bantelmann

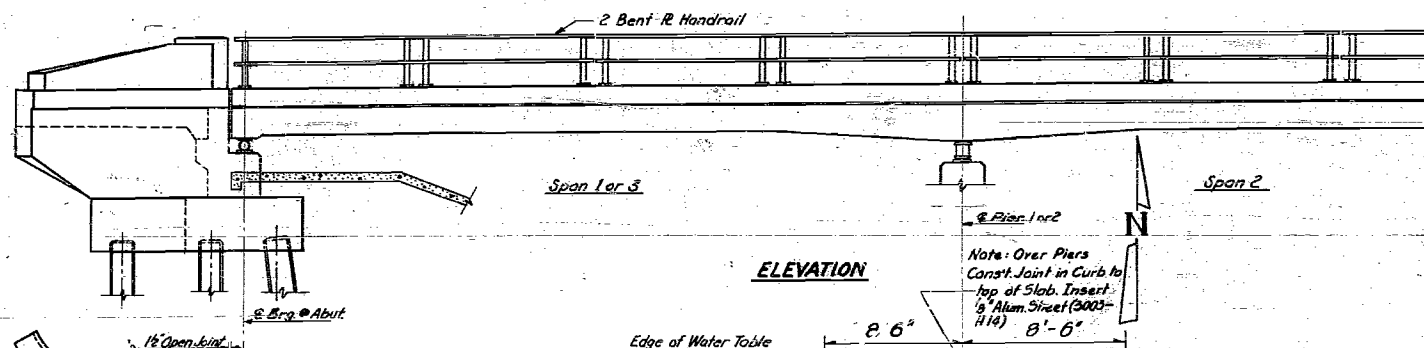
AUG. 12 1959



Rev. 12-28-40. Raised Curb 9" to 11" F.K.J. Revised 10/28/50 in BLUE INK PLAN Embankments according to the new policy. Rev. 2/24/54. Revised note for P. 212 from 2000 to 212/24/54. R.A.Z./J.A.B.

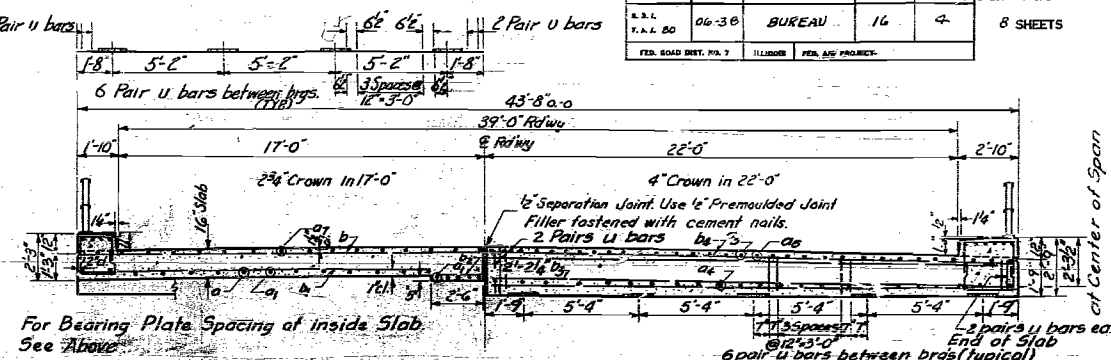
STATE OF ILLINOIS
DEPARTMENT OF PUBLIC WORKS & BUILDINGS
DIVISION OF HIGHWAYS

| | | | | |
|-----------|---------|--------|--------------|-----------|
| ROUTE NO. | SECTION | COUNTY | TOTAL SHEETS | SHEET NO. |
| 66-38 | BUREAU | 16 | 4 | 8 SHEETS |



ELEVATION

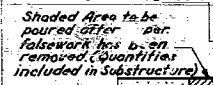
Note: Over Piers
Const. Joint in Curb to
top of Slab. Insert
1/2" Alum. Sheet (3003-
H14) 8'-6"



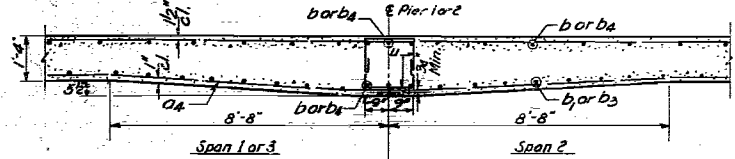
SECTION NEAR E SPAN

CROSS SECTION

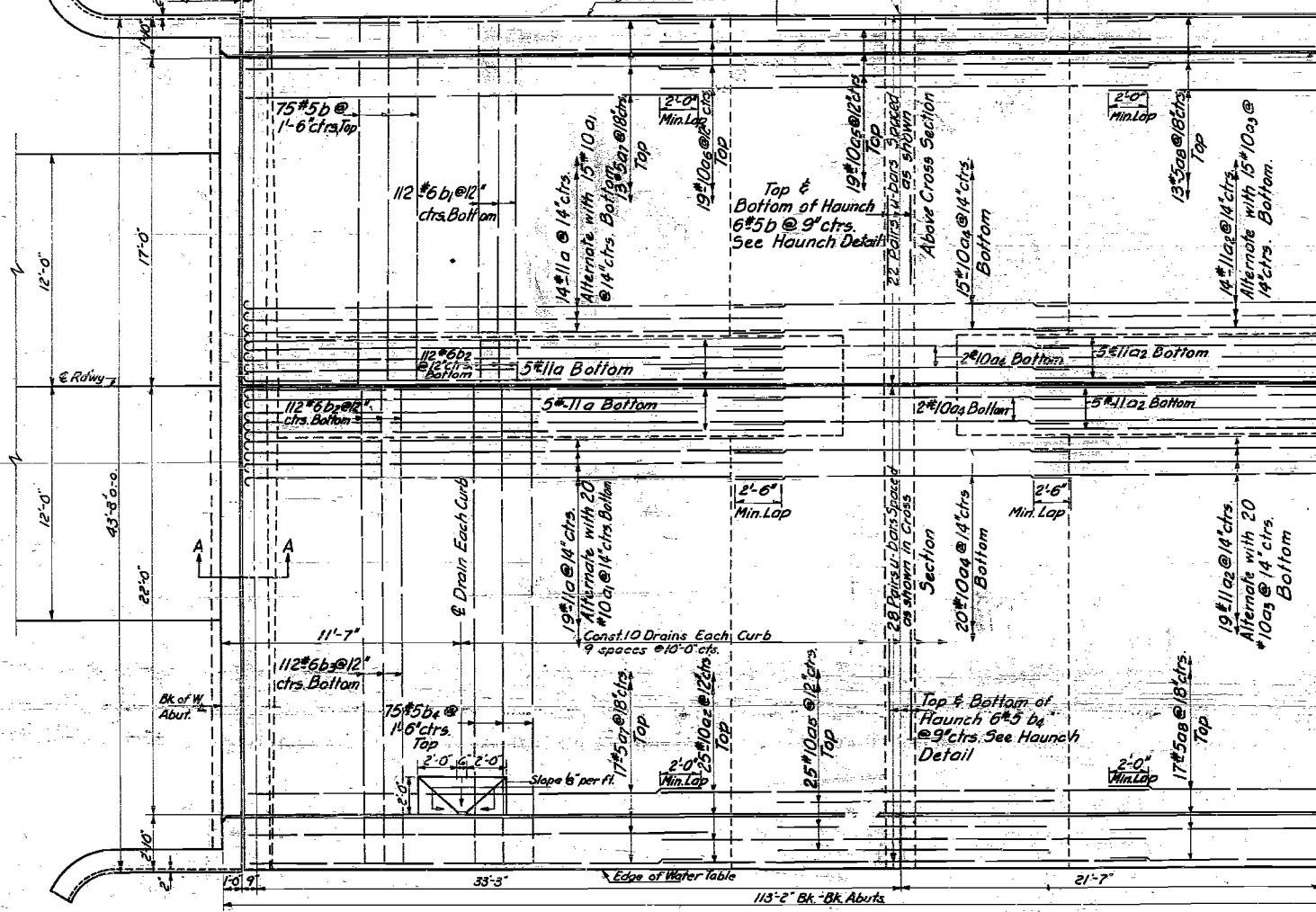
SECTION AT PIER



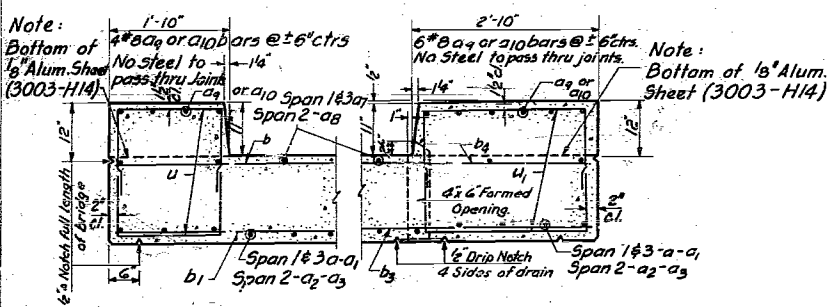
SECTION A-A



HAUNCH DETAIL



PLAN
SHOWING DIMENSIONS
REINFORCEMENT OF SLAB



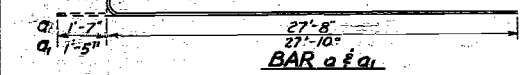
SECTION THRU CHAIRS
SHOWING REIN. & DIMENSIONS

Cost of aluminum sheet shall
be incidental.

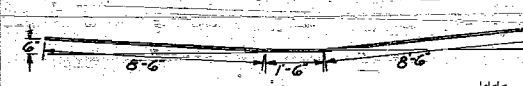
BILL OF MATERIAL (1 BRIDGE)

| BAR | NO. | SIZE | LENGTH | SHAPE |
|-----|-----|------|--------|-------|
| A | 85 | #11 | 29'-3" | C |
| A1 | 70 | #10 | 29'-3" | C |
| A2 | 43 | #11 | 29'-6" | |
| A3 | 35 | #10 | 29'-6" | |
| A4 | 78 | #10 | 18'-6" | |
| A5 | 88 | #10 | 17'-0" | |
| A6 | 88 | #10 | 33'-0" | |
| A7 | 60 | #5 | 18'-3" | |
| A8 | 30 | #5 | 18'-3" | |
| A9 | 40 | #8 | 17'-6" | |
| A10 | 20 | #8 | 27'-6" | |
| B | 87 | #5 | 18'-6" | |
| B1 | 112 | #6 | 18'-0" | |
| B2 | 224 | #6 | 2'-3" | |
| B3 | 112 | #6 | 22'-0" | |
| B4 | 87 | #5 | 24'-6" | |
| U | 424 | #4 | 4'-4" | |
| U1 | 224 | #4 | 5'-4" | |

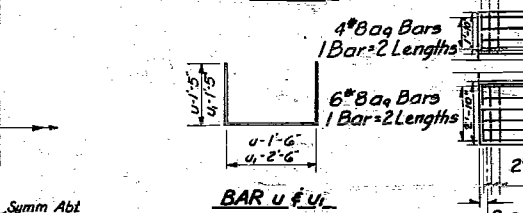
Class X Concrete Cu. Yds. 284.1
Reinforcement Bars Lbs. 76,560
Structural Steel Lbs. 12,050



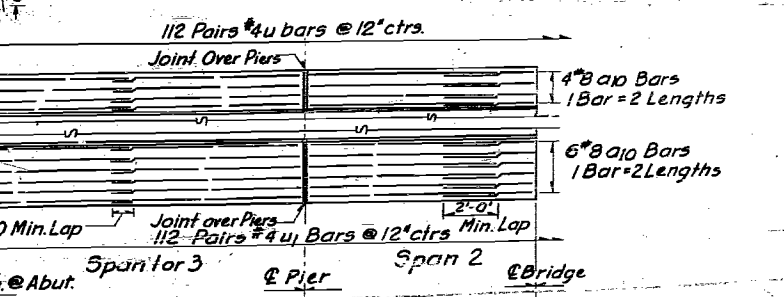
BAR a1a1



BAR a2

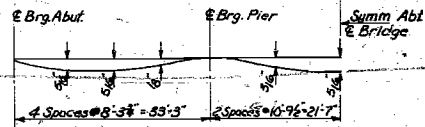


BAR u1u1



REINFORCEMENT IN TOP OF CURBS

SUPERSTRUCTURE
MAPLE GROVE CREEK
FAI. RT. 80 SEC. 6-38
BUREAU COUNTY
STA. 763+25

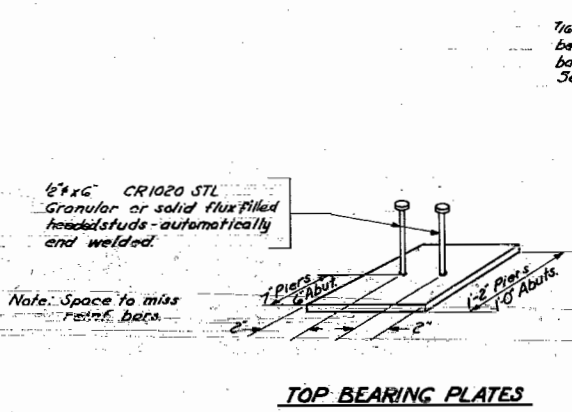
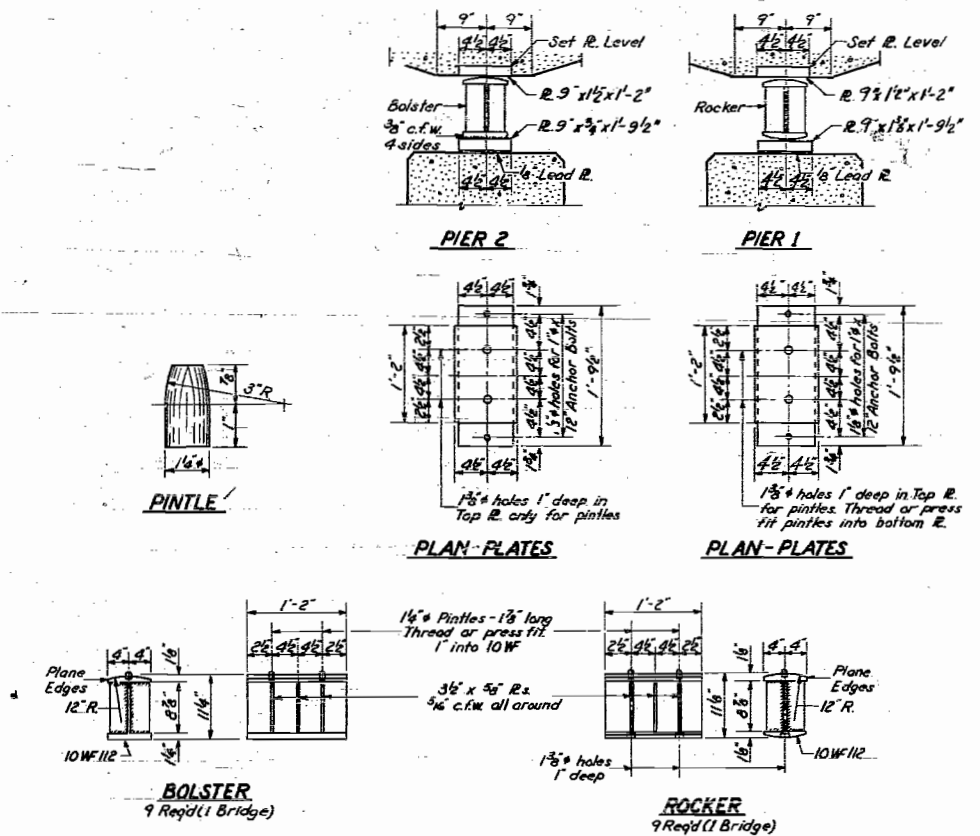
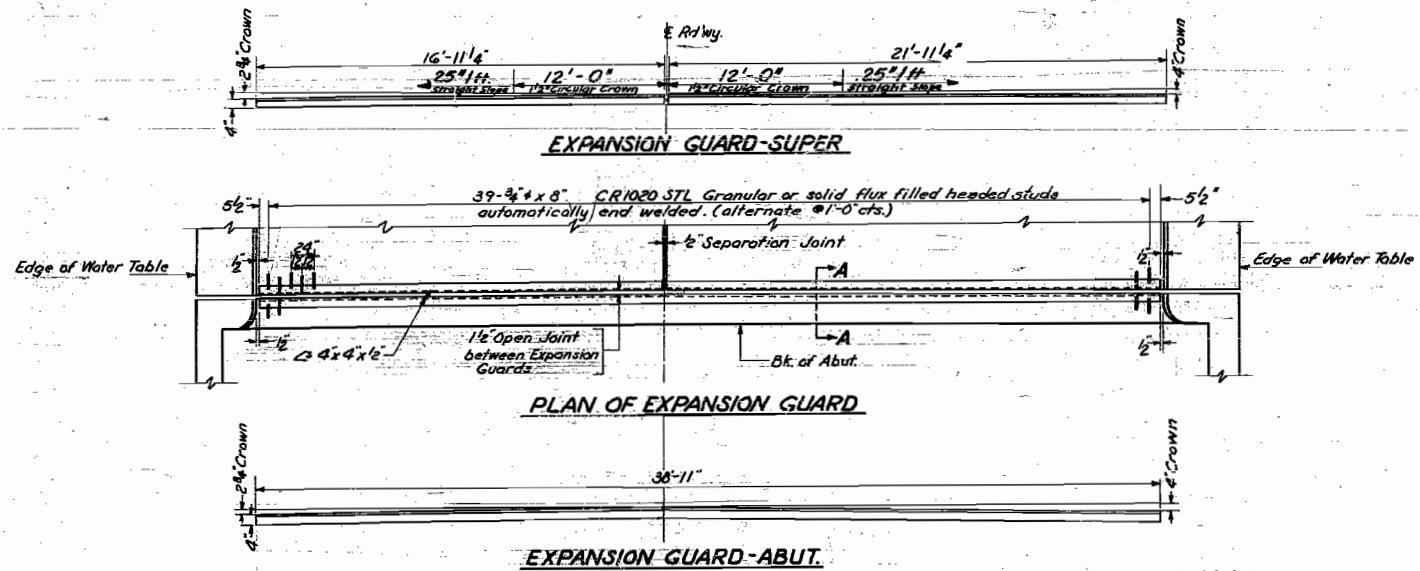


DEAD LOAD DEFLECTION DIAGRAM

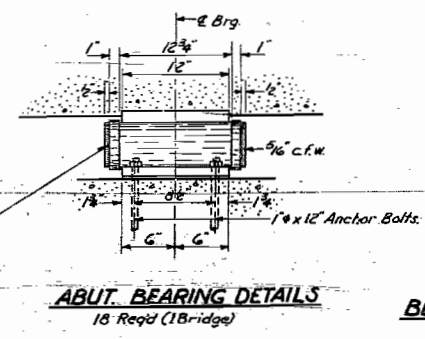
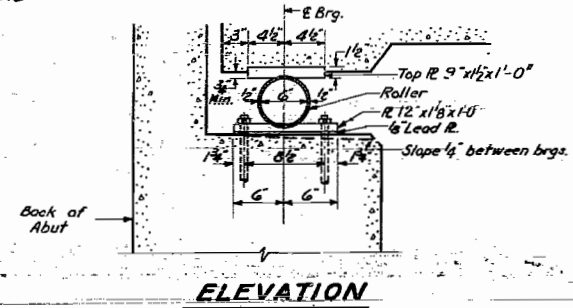
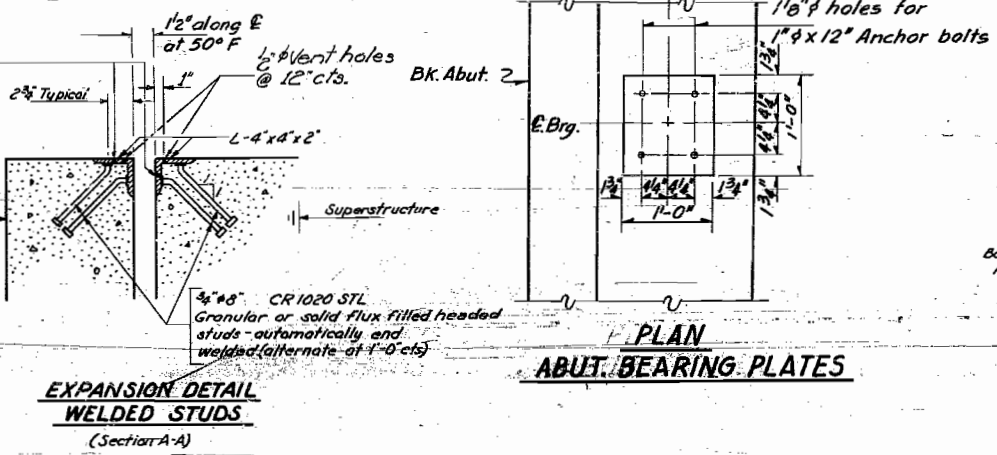
DESIGNED Wm. C. Keene
CHECKED Floyd H. Jacobs
DRAWN Gabor Papp, w.c.k.
J.L. Armstrong
APPROVED R.K. B...
AUG. 12 19 59

STATE OF ILLINOIS
DEPARTMENT OF PUBLIC WORKS & BUILDINGS
DIVISION OF HIGHWAYS

| | | | | | |
|-------------------------|---------|--------|--------------|-----------|-------------------------|
| ROUTE NO. | SECTION | COUNTY | TOTAL SHEETS | SHEET NO. | SHEET NO. 3 8 SHEETS |
| S.S.L. | D6-3B | BUREAU | 16 | 5 | |
| F.A.I.B.D. | | | | | |
| FED. H.C.P. DIST. NO. 7 | | | | | |



7/8" holes @ 12" cts for 3/8" bolts. All bolts shall be burned, sawed or clipped off flush with back of angles after forms are removed. Set on 2" gauge line.



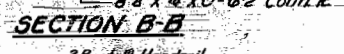
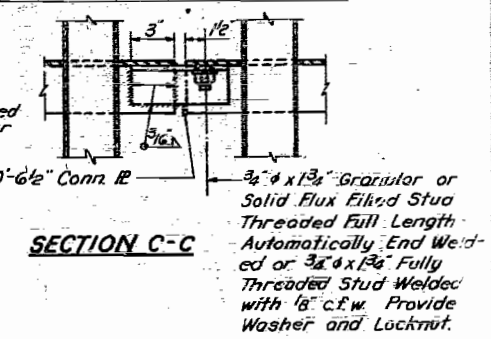
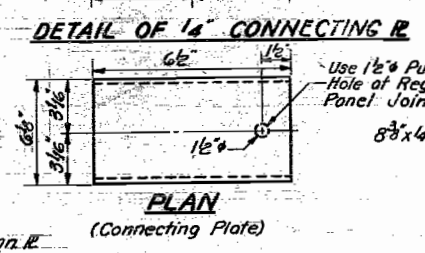
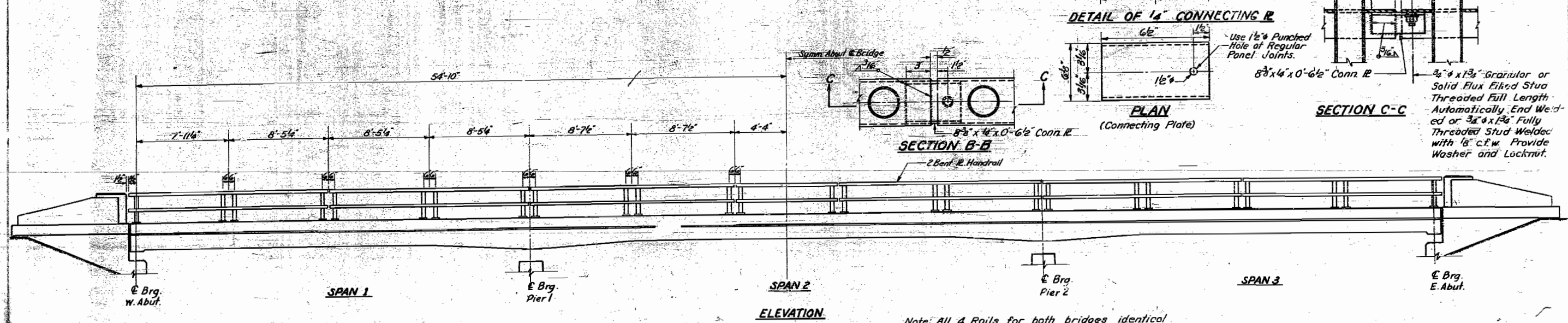
| | |
|---------------------------|----------------------------------|
| DESIGNED Wm. C. Keene | EXAMINED <i>[Signature]</i> 1959 |
| CHECKED F. H. Jacobsen | PASSED <i>[Signature]</i> |
| DRAWN MCK. J.L. Armstrong | APPROVED <i>[Signature]</i> |
| CHECKED F. H. J. | |

BEARING & EXPANSION GUARD DETAILS
MAPLE GROVE CREEK
FAI RT. 80 SEC. 6-3B
BUREAU COUNTY
STA. 763+25

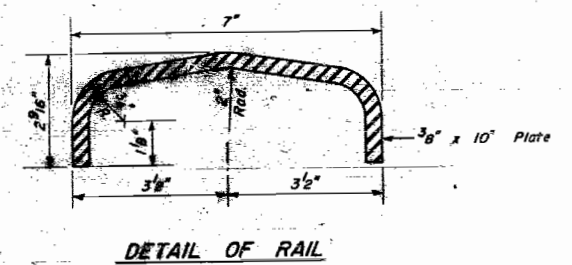
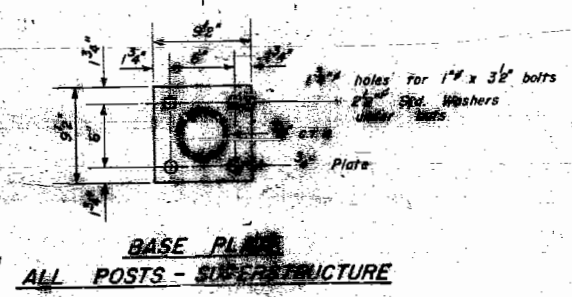
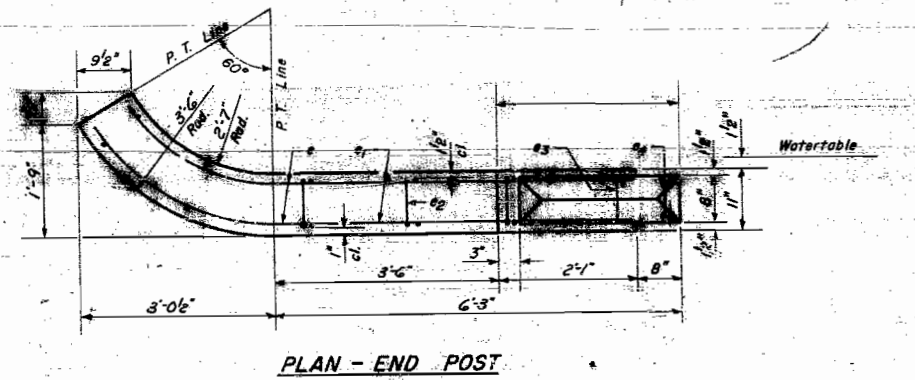
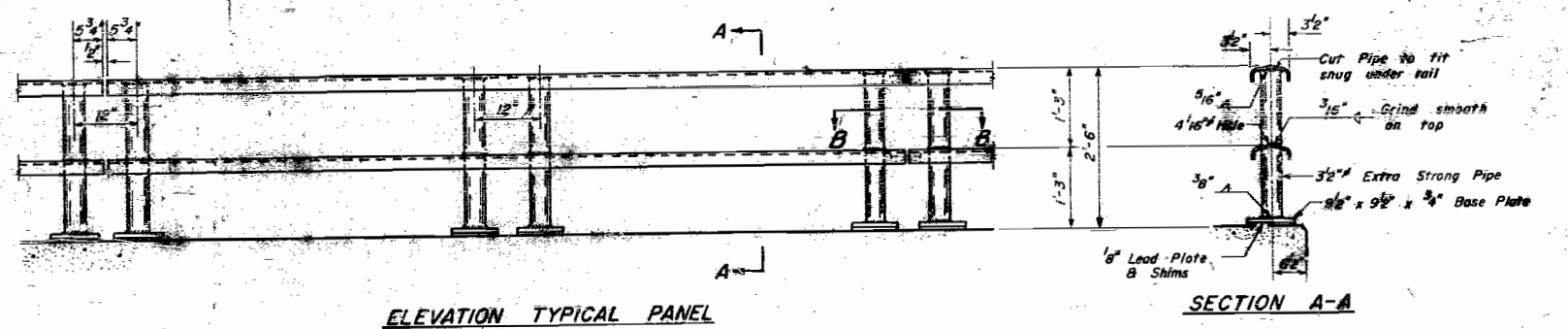
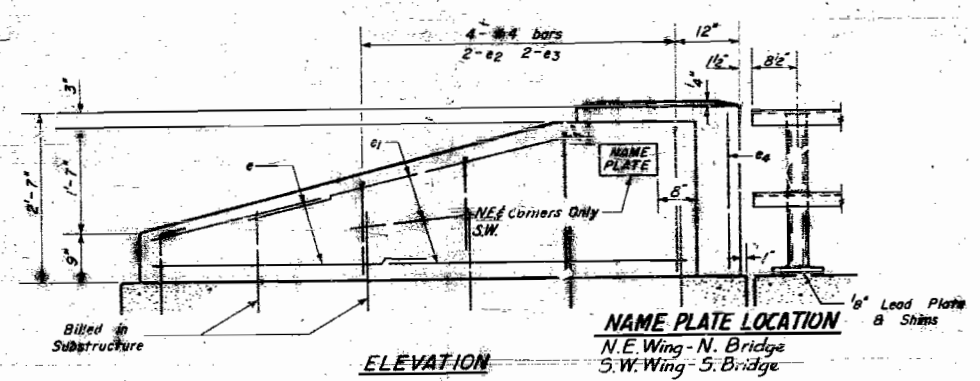
Revised 5/14/61 Welded Studs mechanized according to Std. Rev. 8-23-60 - J.E.K. Rev. 4/11/61 P.A.T. Added 1/2" Vent holes in Exp. Guard Detail.

STATE OF ILLINOIS
DEPARTMENT OF PUBLIC WORKS & BUILDINGS
DIVISION OF HIGHWAYS

| | | | | |
|-----------|---------|--------|--------------|-----------|
| ROUTE NO. | SECTION | COUNTY | TOTAL SHEETS | SHEET NO. |
| 66-38 | BUREAU | 16 | 6 | 8 SHEETS |



Note: All 4 Rails for both bridges identical
Quantities shown are for 1 bridge.



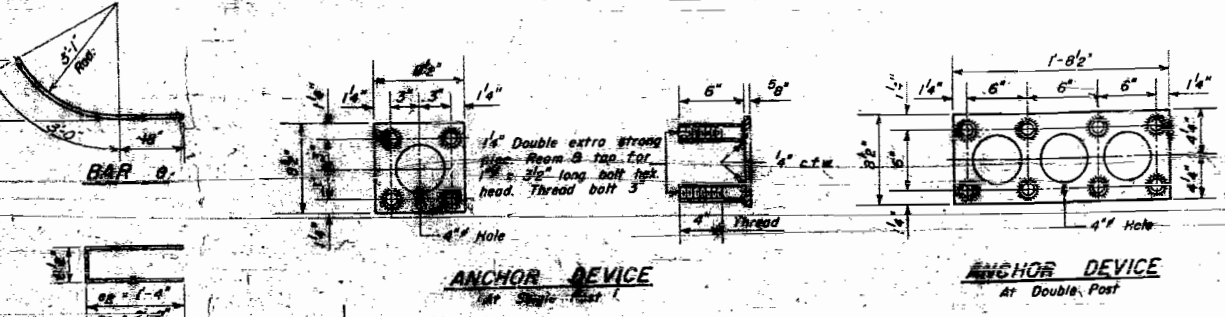
BILL OF MATERIAL (1 BRIDGE)

| | | |
|--------------------|---------|-----|
| Handrail Concrete | cu. yd. | 2.3 |
| Reinforcement Bars | Lbs. | 190 |
| Handrail | Lbs. | 223 |

GENERAL NOTES
All End Posts shall be Handrail Concrete.
Provide 1-1/2" and 2-1/8" Shims for 50% of the Posts.

BILL OF REINFORCEMENT (4 POSTS)

| Bar | No. | Size | Length | Shape |
|-----|-----|------|--------|-------|
| #1 | 16 | #4 | 4'-6" | |
| #2 | 24 | #4 | 3'-6" | |
| #3 | 8 | #4 | 5'-0" | |
| #4 | 8 | #4 | 2'-3" | |

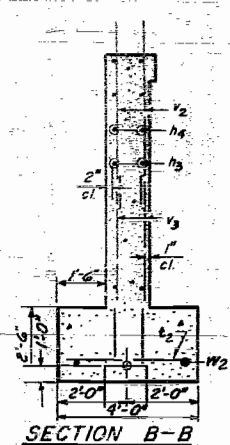
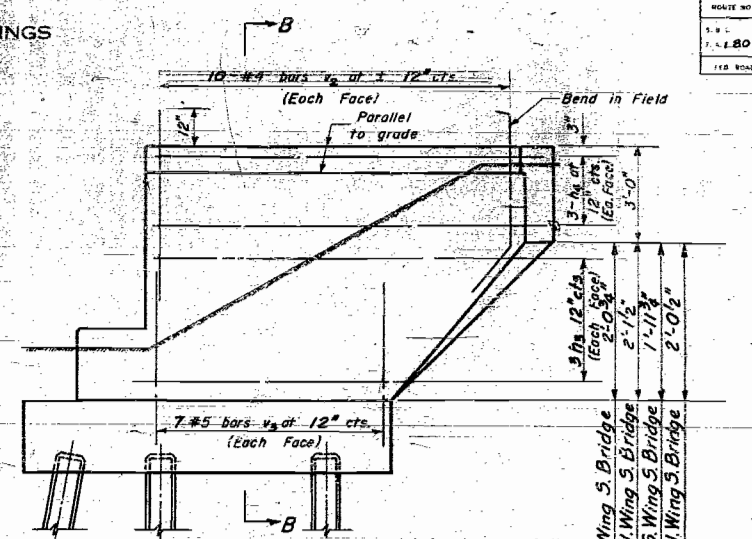
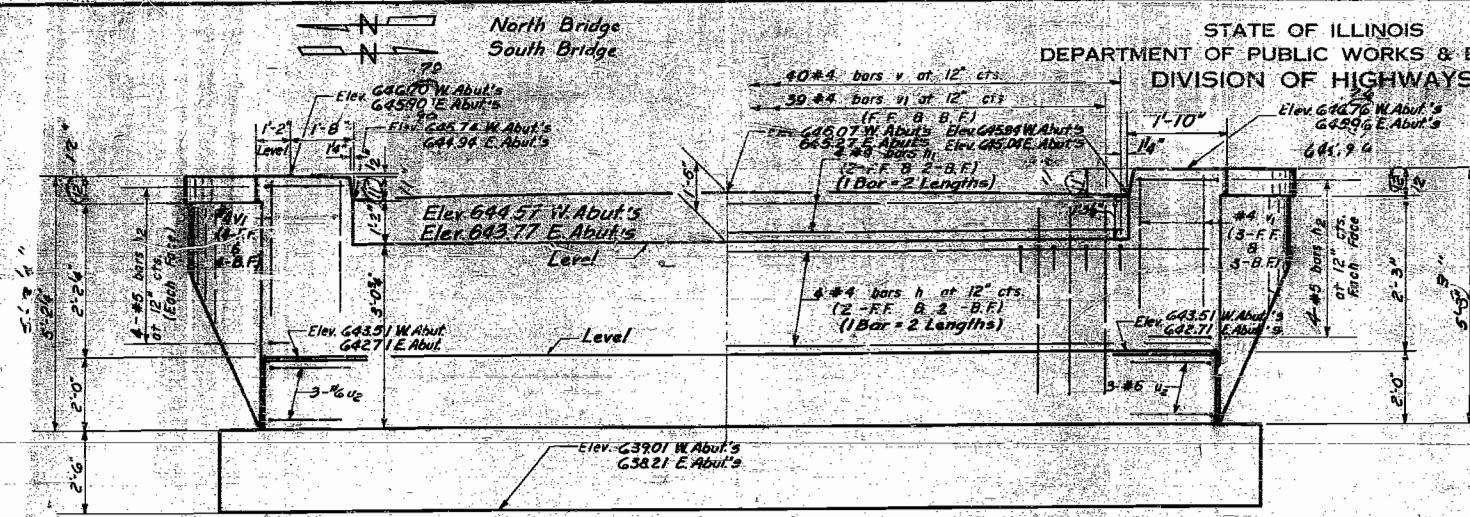


METAL HANDRAIL & END POSTS
MAPLE GROVE CREEK
FAI RT. 80 SEC. 6-38
BUREAU COUNTY
STA. 763+25

DESIGN: Wm. C. Keene
CHECKED: F.H. Jacobson
DRAWN: W.A. Sausaman
APPROVED: R.H. [Signature]
EXAMINED: [Signature]
PASSED: [Signature]

STATE OF ILLINOIS
DEPARTMENT OF PUBLIC WORKS & BUILDINGS
DIVISION OF HIGHWAYS

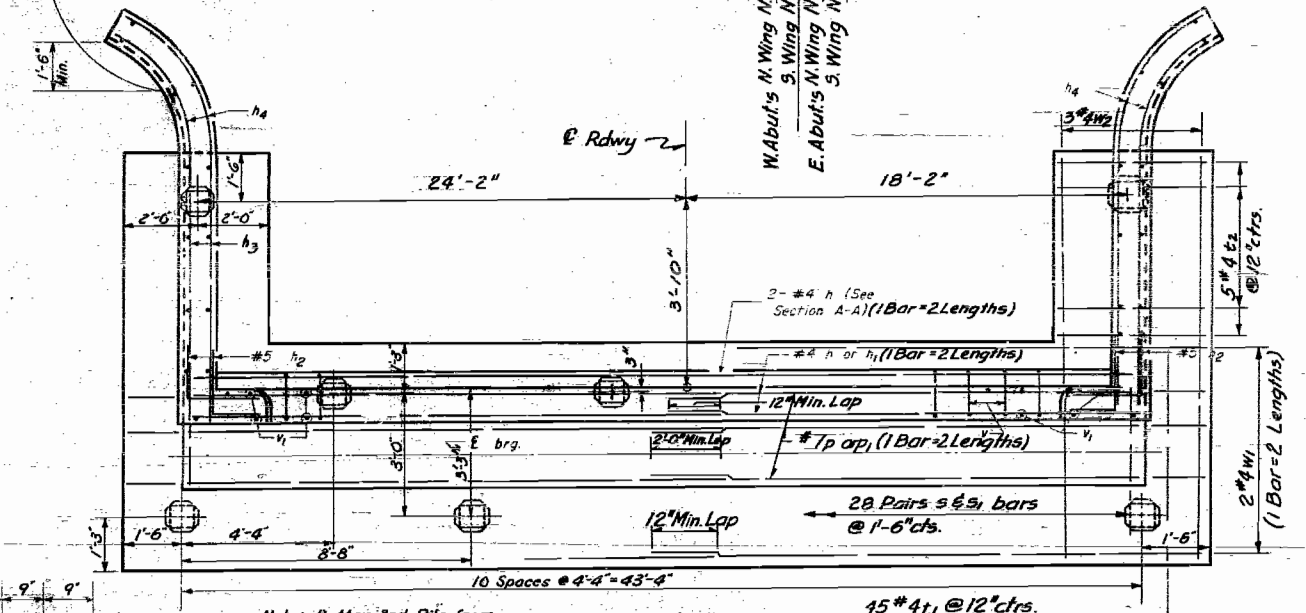
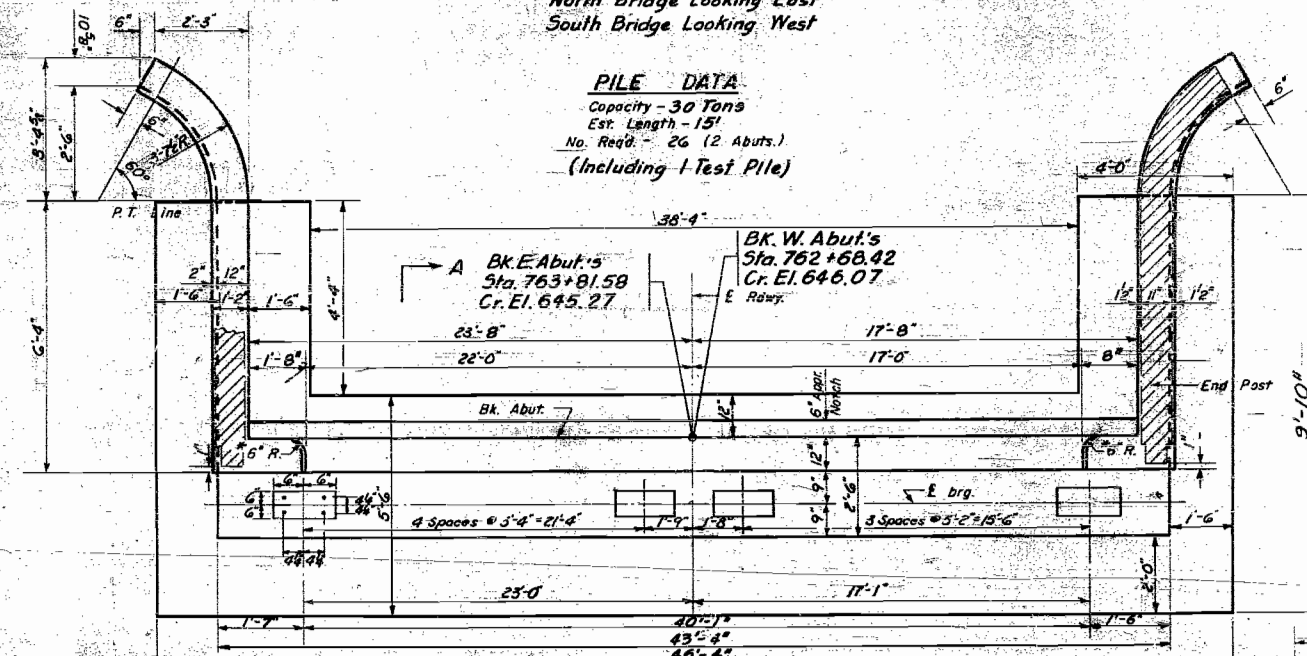
| | | | | |
|-------------------------|---------|--------|--------------|-----------|
| ROUTE NO. | SECTION | COUNTY | TOTAL SHEETS | SHEET NO. |
| 118 | 06-3B | BUREAU | 16 | 7 |
| SHEET NO. 5 8 SHEETS | | | | |



ELEVATION
At Right Angles to E. Avey
North Bridge Looking East
South Bridge Looking West

SIDE ELEVATION

PILE DATA
Capacity - 30 Tons
Est. Length - 15'
No. Req'd - 26 (2 Abuts.)
(Including 1 Test Pile)

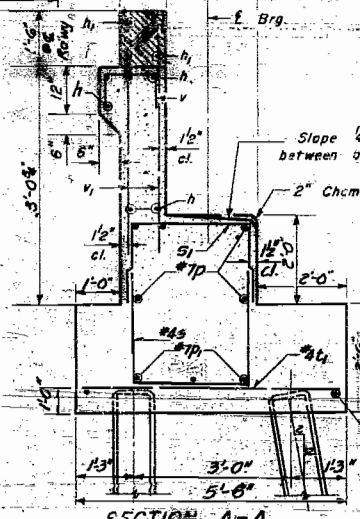
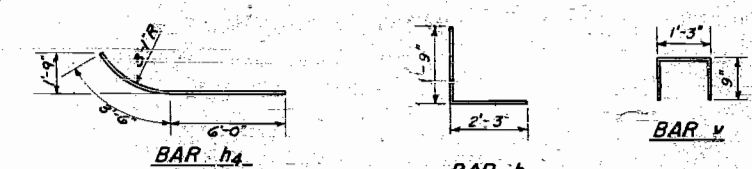


PLAN OF ABUTMENT
Dimensions

PLAN OF ABUTMENT
Reinforcement & Pile Spacing

Note: Contractor shall construct curb without radius when a curb & gutter are to be used on bridge approaches. (See Road Plans).

Note: Batter End Pile from each end front row.



SECTION A-A

BILL OF REINFORCEMENT (1 BRIDGE)

| Bar No. | Size | Length | Shape | Bar | Wt. | Size | Length | Shape |
|---------|------|--------|-------|-----|-----|------|--------|-------|
| h | #4 | 22'-3" | — | | | | | |
| h1 | #4 | 20'-0" | — | | | | | |
| h2 | #3 | 4'-0" | L | | | | | |
| h3 | #4 | 6'-6" | — | P | 20 | #7 | 22'-9" | — |
| h4 | #5 | 9'-6" | — | P1 | 12 | #7 | 24'-0" | — |
| W1 | #4 | 23'-6" | — | v | 184 | #4 | 3'-0" | — |
| W2 | #4 | 9'-6" | — | v2 | 80 | #4 | 4'-3" | — |
| t1 | #4 | 5'-3" | — | v3 | 56 | #5 | 5'-0" | — |
| t2 | #4 | 3'-9" | — | s | 56 | #4 | 5'-9" | — |
| | | | | s1 | 56 | #4 | 7'-3" | — |
| | | | | u2 | 12 | #6 | 8'-3" | — |

BILL OF MATERIAL (1 BRIDGE)

| Item | Unit | Quantity |
|-----------------------|----------|----------|
| Glass X Concrete | Cu. Yd. | 85.8 |
| Reinforcement Bars | Lb. | 4800 |
| Concrete Piles | Lin. Ft. | 375 |
| Test Piles (Concrete) | Each | 1 |

DESIGNED *Wm.C. Keene*
CHECKED *F.H. Jacobsen*
DRAWN *W.A. Sausman*
CHECKED *F.H.J.*

EXAMINED *McR...*
PASSED *E.H...*
APPROVED *R.H. ...*

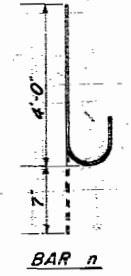
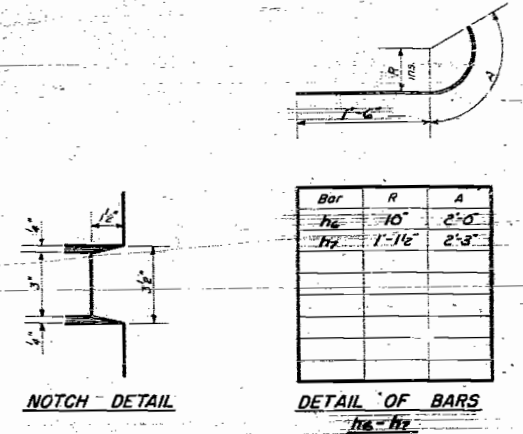
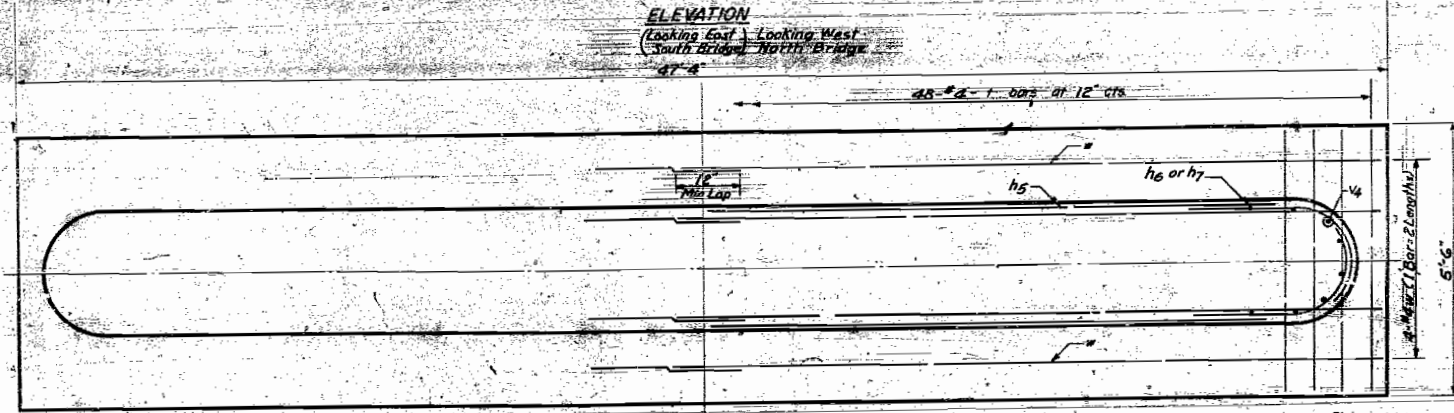
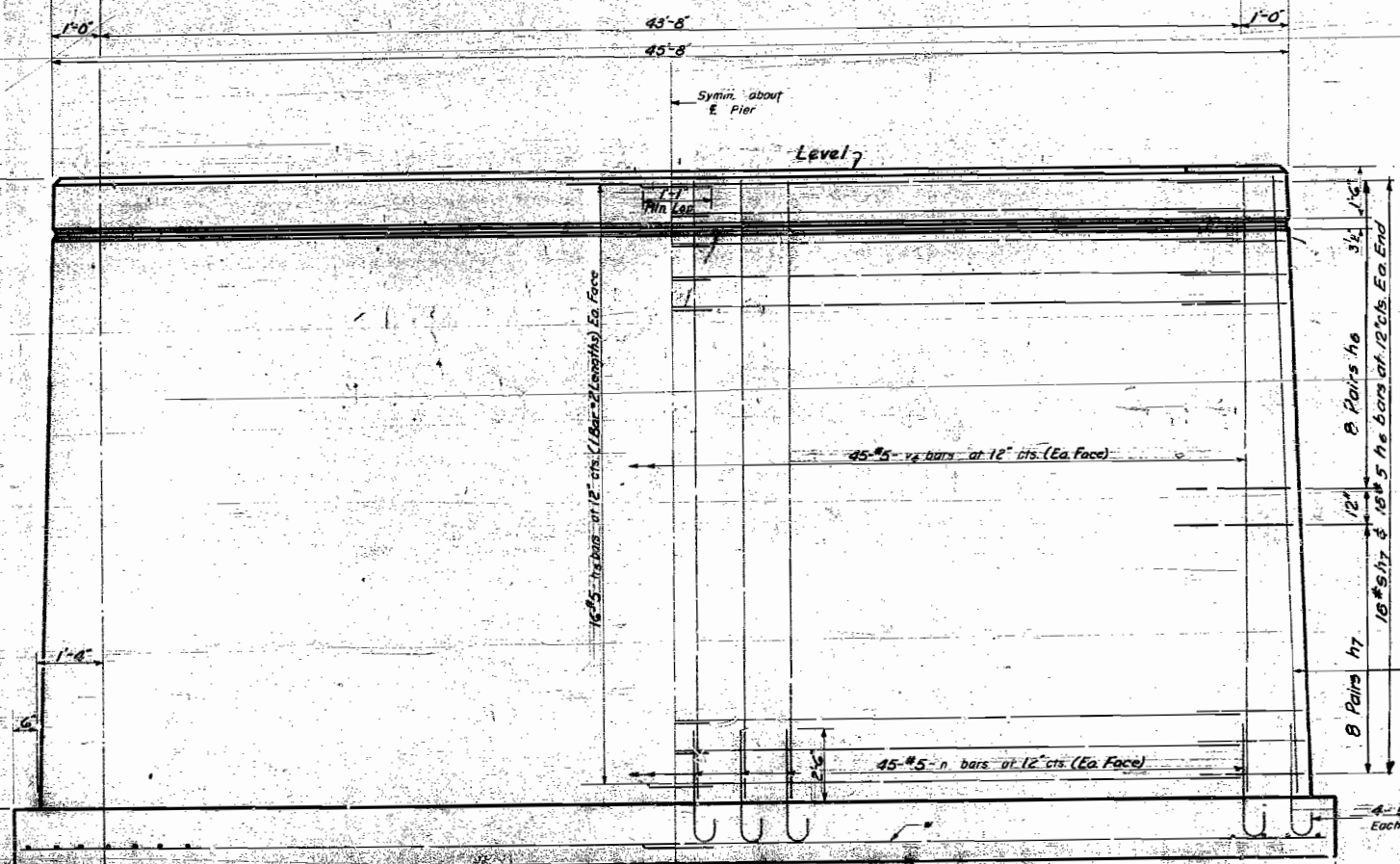
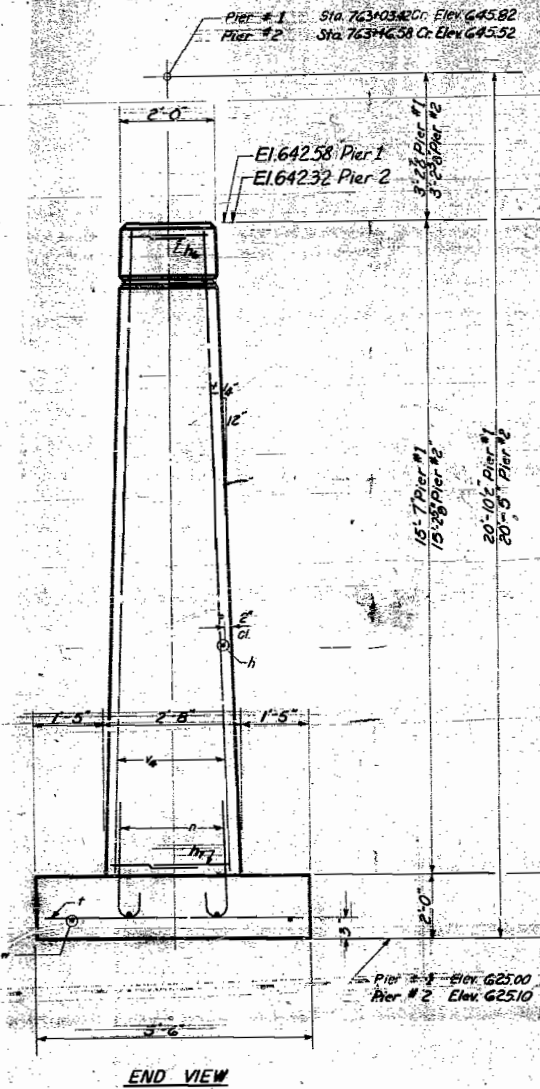
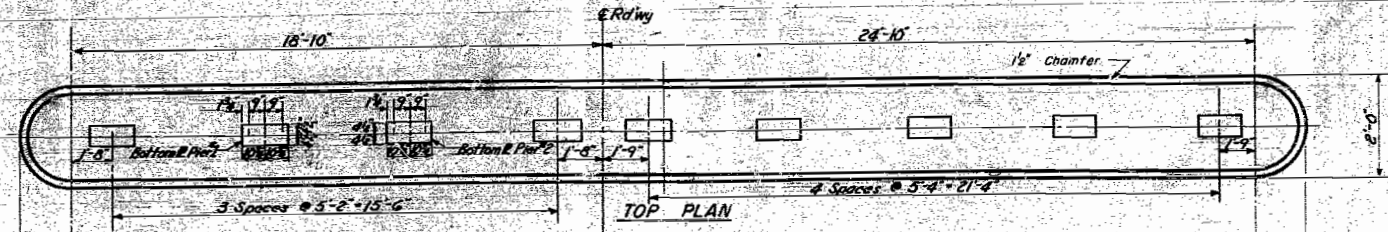
AUG. 12 1959

ABUTMENTS & WINGS
MAPLE GROVE CREEK
FAI. RT. 80 SEC. 63B
BUREAU COUNTY
STA. 763+25

STATE OF ILLINOIS
DEPARTMENT OF PUBLIC WORKS & BUILDINGS
DIVISION OF HIGHWAYS

| | | | | | |
|------------------------|----------|------------------|-------------|-----------|-------------------------|
| ROUTE NO. | SECTION | COUNTY | PIER NUMBER | SHEET NO. | SHEET NO. 6 8 SHEETS |
| I. & L. P. A. I. E. O. | 06-26 | BUREAU | 16 | 8 | |
| FED. ROAD DIST. NO. 1 | ILLINOIS | FED. AID PROJECT | | | |

Piers 1 & 2 - S Bridge
Piers 1 & 2 - N Bridge



PIERS 1 & 2
BILL OF MATERIAL (BRIDGE)

| Bar | No. | Size | Length | Shape |
|-----|-----|------|--------|-------|
| h5 | 128 | #5 | 22'-6" | U |
| h6 | 64 | #5 | 3'-6" | U |
| h7 | 64 | #5 | 3'-9" | U |
| n | 196 | #5 | 4'-7" | C |
| r | 96 | #4 | 5'-3" | |
| v | 196 | #5 | 15'-0" | |
| w | 16 | #4 | 24'-3" | |

Class A Concrete Cu Yd 159.6
Reinforcement Bars Lb 8090

DESIGNED Wm. C. Keene
CHECKED F. H. J. Gabor Papp
DRAWN M.K. W. A. Goussard
CHECKED F. H. J.
AUG 12 1957
EXAMINED [Signature]
PASSED [Signature]
APPROVED R. L. [Signature]

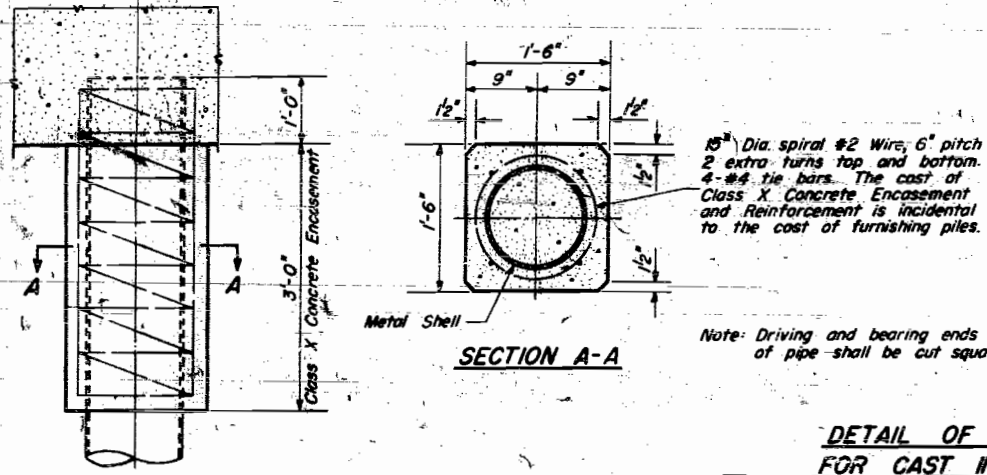
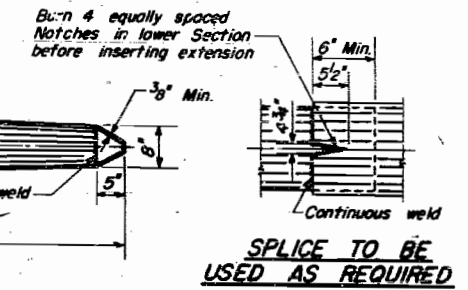
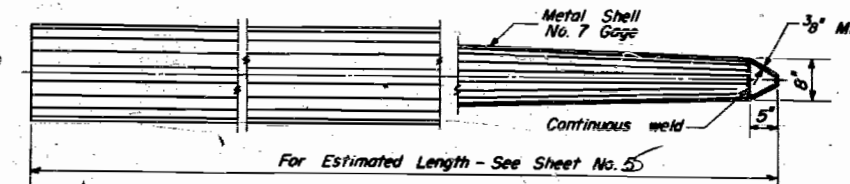
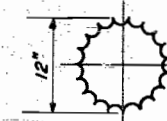
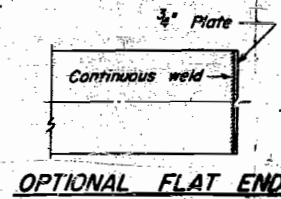
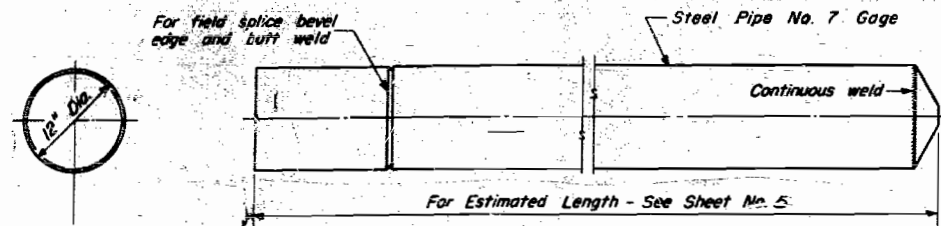
Maximum Soil Pressure Under footings 2.45 Tons/ft.²
Average Soil Pressure Under footings 1.86 Tons/ft.²

PIERS 1 & 2
MAPLE GROVE CREEK
FAI. RT. 80 SEC. 6-3B
BUREAU COUNTY
STA 763+25
Piers 1 & 2 South Bridge
Same as Piers 1 & 2 North Bridge.

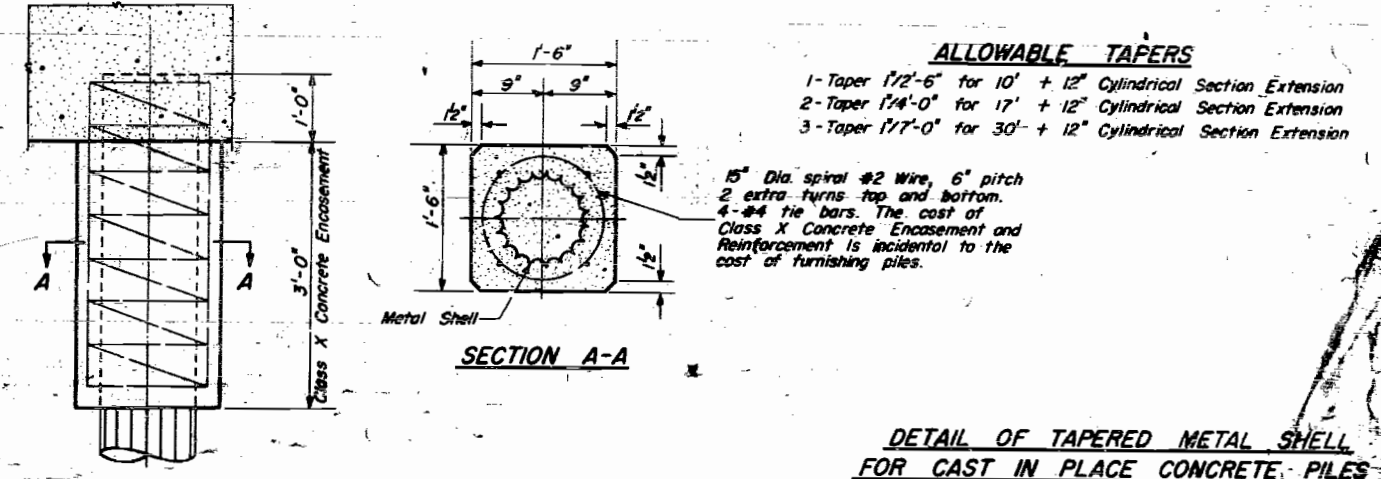
STATE OF ILLINOIS
DEPARTMENT OF PUBLIC WORKS & BUILDINGS
DIVISION OF HIGHWAYS

| | | | |
|-------------|---------|------|-----------|
| PROJECT NO. | SECTION | DATE | SHEET NO. |
| 106-35 | BUREAU | 16 | 9 |

8 SHEETS

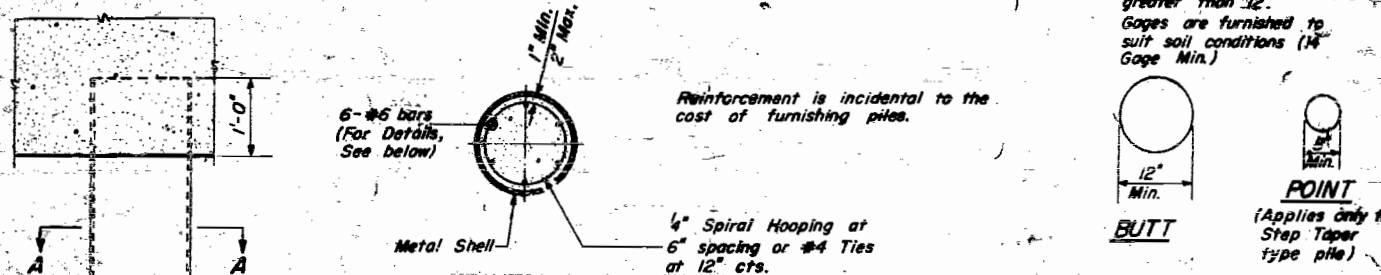
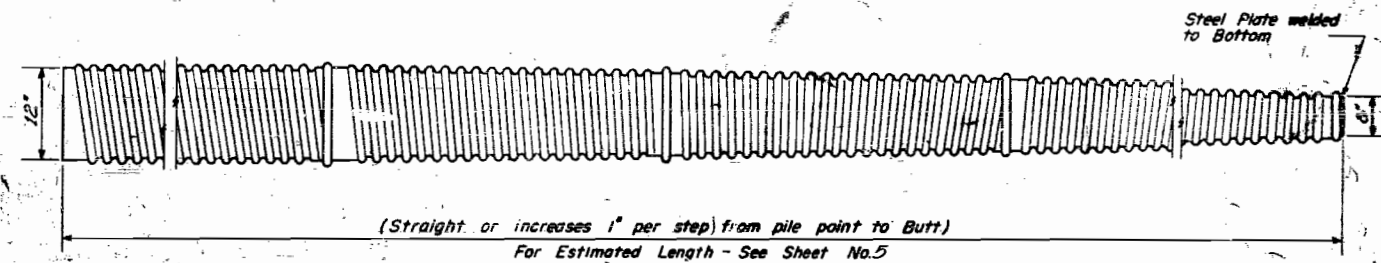
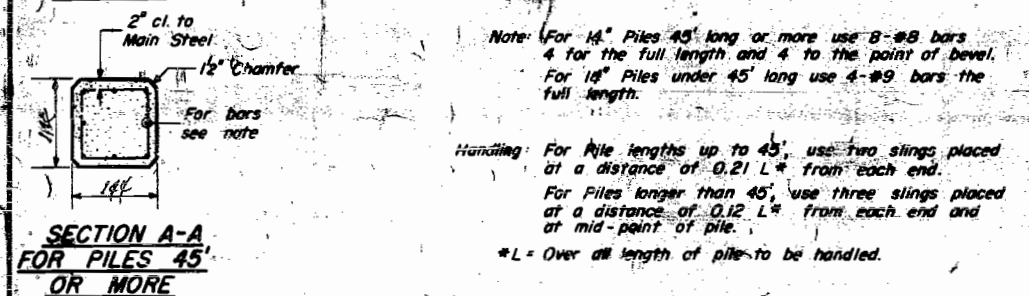
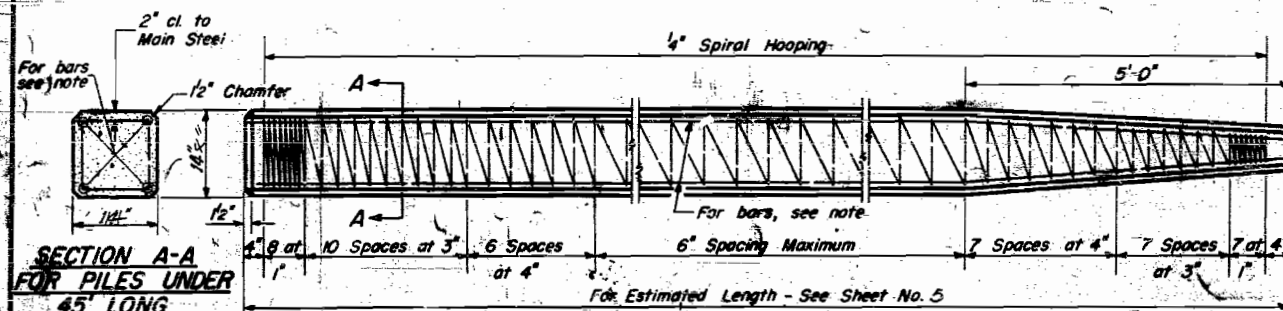


**DETAIL OF CYLINDRICAL STEEL SHELL
FOR CAST IN PLACE CONCRETE PILES**



**DETAIL OF TAPERED METAL SHELL
FOR CAST IN PLACE CONCRETE PILES**

- ALLOWABLE TAFERS**
- 1-Taper 1/2'-6" for 10' + 12" Cylindrical Section Extension
 - 2-Taper 1/4'-0" for 17' + 12" Cylindrical Section Extension
 - 3-Taper 1/7'-0" for 30' + 12" Cylindrical Section Extension



**DETAIL OF MANDREL DRIVEN
STRAIGHT OR STEP-TAPER PILES
FOR CAST IN PLACE CONCRETE PILES**

PILES
MAPLE GROVE CREEK
EAST RT. 80 SEC. 6-3B
BUREAU COUNTY
STA. 753+25

| | |
|----------------------------|------------------------|
| DESIGNED: Wm. C. Keene | EXAMINED: J.E. Baumann |
| CHECKED: Floyd K. Jacobsen | PASSED: [Signature] |
| DRAWN: W. A. Sausman | APPROVED: [Signature] |
| CHECKED: F.K.J. | |

MAY 22 1961

DETAIL OF PRECAST CONCRETE PILES

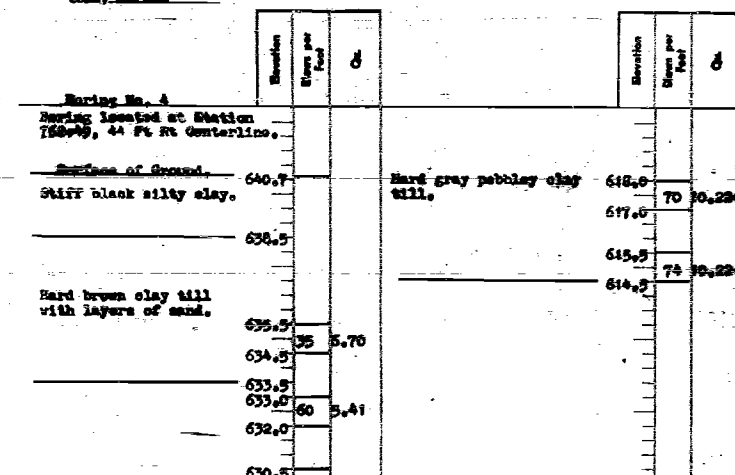
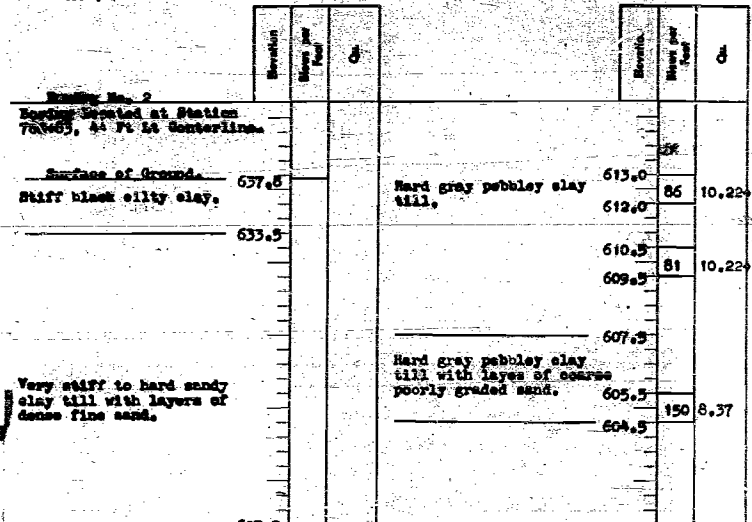
Revised 6/1/61 - Replaced Standard X-1, dated 4-6-59, by Standard X-1, dated 3-12-61, A.B.

STATE OF ILLINOIS
 DEPARTMENT OF PUBLIC WORKS & BUILDINGS
 DIVISION OF HIGHWAYS

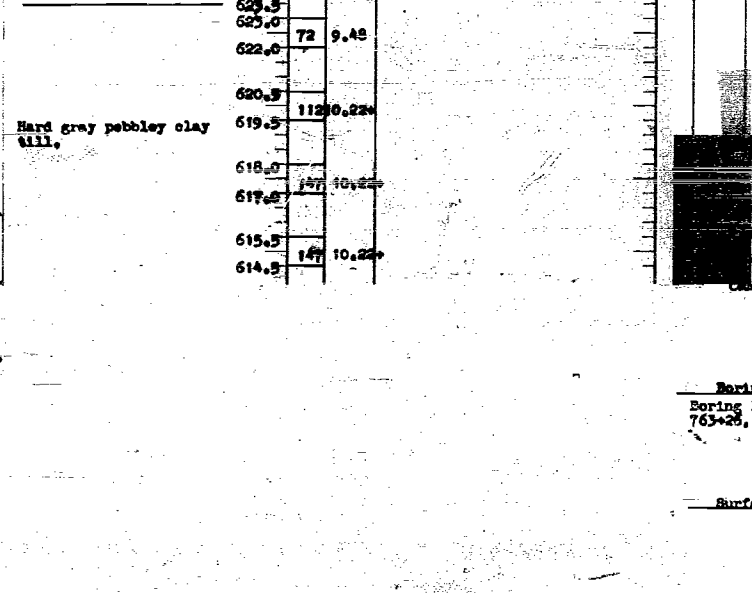
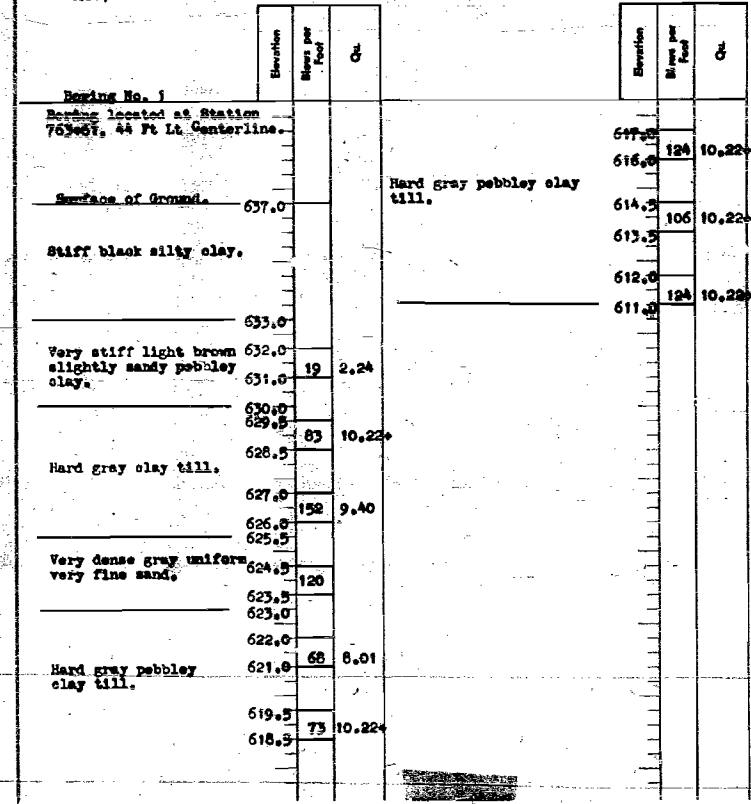
PROJECT SHEET NO. 8
 SHEETS
 8 SHEETS

Project: Bridge over Maple Grove Creek
 Route: F.A.I. 80 Station: 763+25 Date: June 59
 Section: 06-3B Boring made by William Carter
 County: Bureau

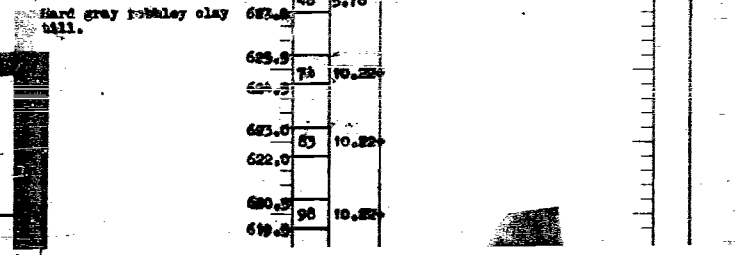
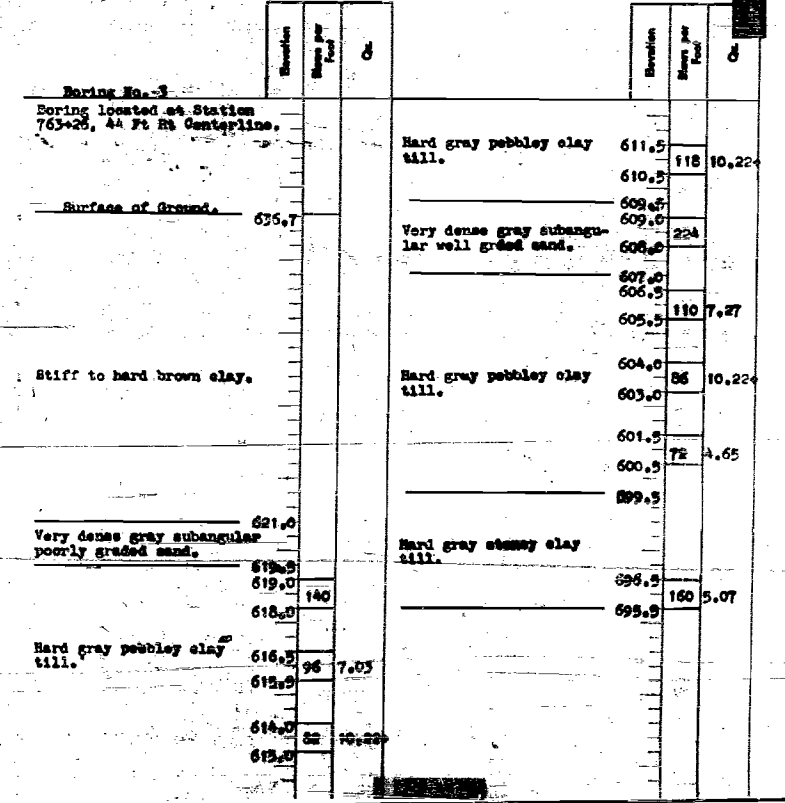
Project: Bridge over Maple Grove Creek
 Route: F.A.I. 80 Station: 763+25 Date: June 59
 Section: 06-3B Boring made by William Carter
 County: Bureau



Project: Bridge over Maple Grove Creek
 Route: F.A.I. 80 Station: 763+25 Date: June 59
 Section: 06-3B Boring made by William Carter
 County: Bureau



Project: Bridge over Maple Grove Creek
 Route: F.A.I. 80 Station: 763+25 Date: June 59
 Section: 06-3B Boring made by William Carter
 County: Bureau



NOTE:
 N=Blows per foot of penetration
 of sampling spoon. Hammer
 Weight = 350 Lbs. Drop = 12 inches
 q_u = Unconfined compressive
 strength in tons per square foot.

DESIGNED: Wm. C. Keene
 CHECKED: F.H. JACOBSEN
 DRAWN: Gabor Papp
 WCK
 CHECKED: F.S.U.

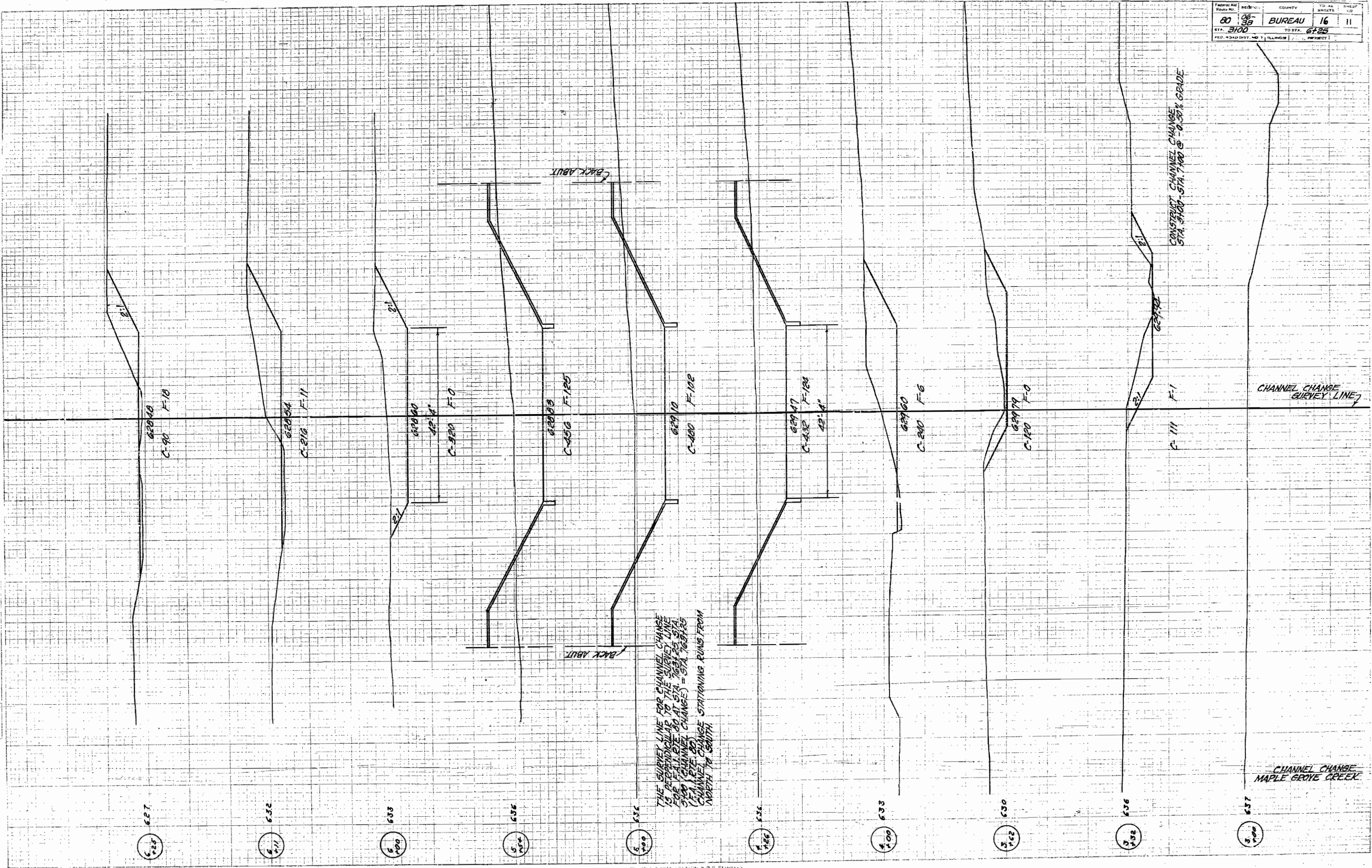
AUG. 12 1959
 EXAMINED: [Signature]
 PASSED: [Signature]
 APPROVED: R.R. Bartolomay

BORINGS
MAPLE GROVE CREEK
F.A.I. RT. 80 SEC. 6-3B
BUREAU COUNTY
STA. 763+25

FINAL SURVEY
 SHEET NO. 11
 DATE: 06-30-80
 BY: [Signature]

ORIGINAL SURVEY
 SHEET NO. 11
 DATE: 06-30-80
 BY: [Signature]

FROM AS
 SHEET NO. 80
 TO AS
 SHEETS 16
 COUNTY BUREAU
 STA. 3100 TO STA. 6125
 PROJECT: CHANNEL CHANGE MAPLE GROVE CREEK



THE SURVEY LINE FOR CHANNEL CHANGE IS PERPENDICULAR TO THE SURVEY LINE FOR F-11 ETC. 80 AT STA. 7034 TO STA. 800 (CHANNEL CHANGE) = STA. 7034 (F-11 ETC. 80) CHANNEL CHANGE STATIONING RUNS FROM NORTH TO SOUTH.

CHANNEL CHANGE SURVEY LINE

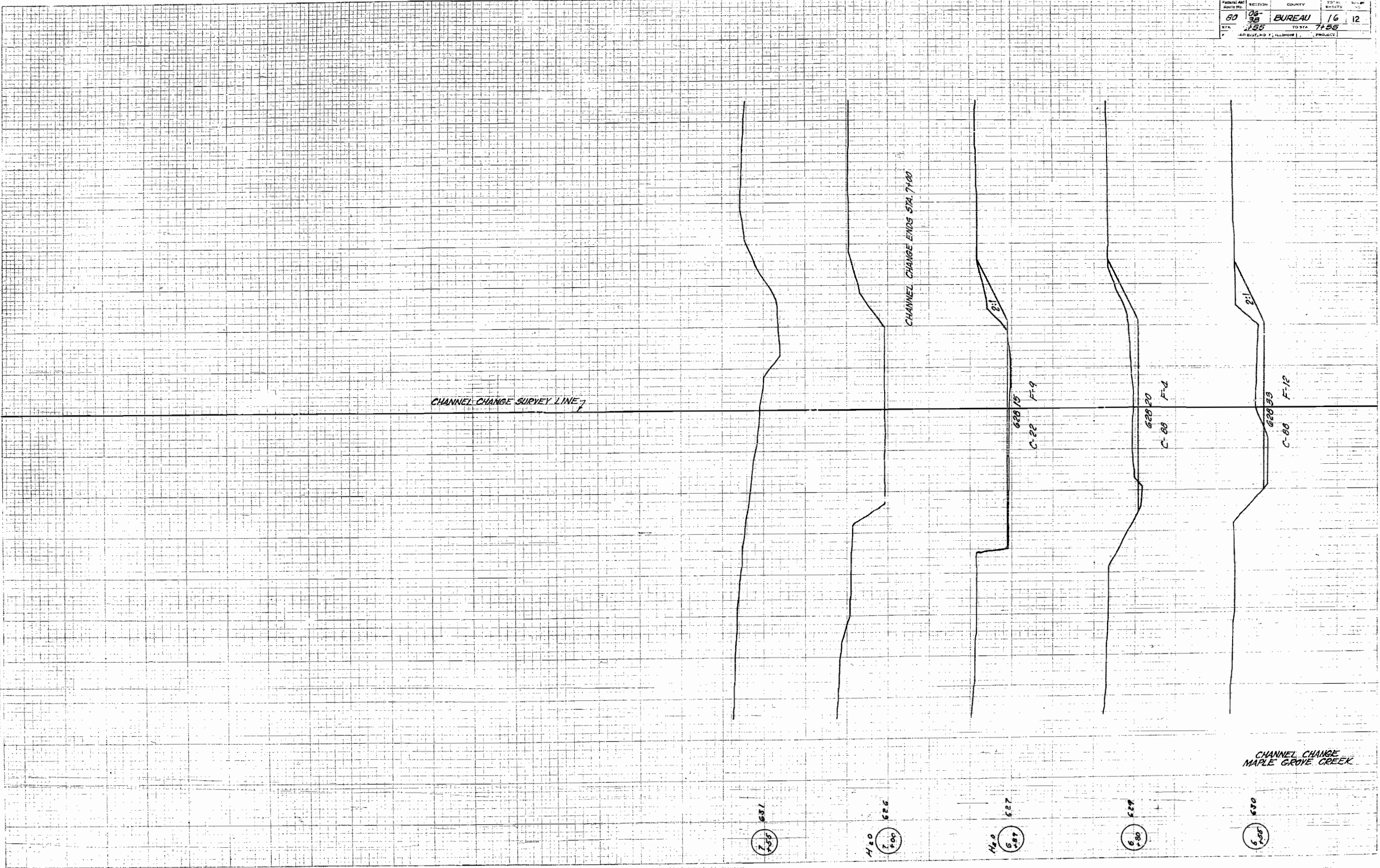
CONST. CHANNEL CHANGE STA. 6100-STA. 7100 @ 0.25% GRADE

CHANNEL CHANGE MAPLE GROVE CREEK

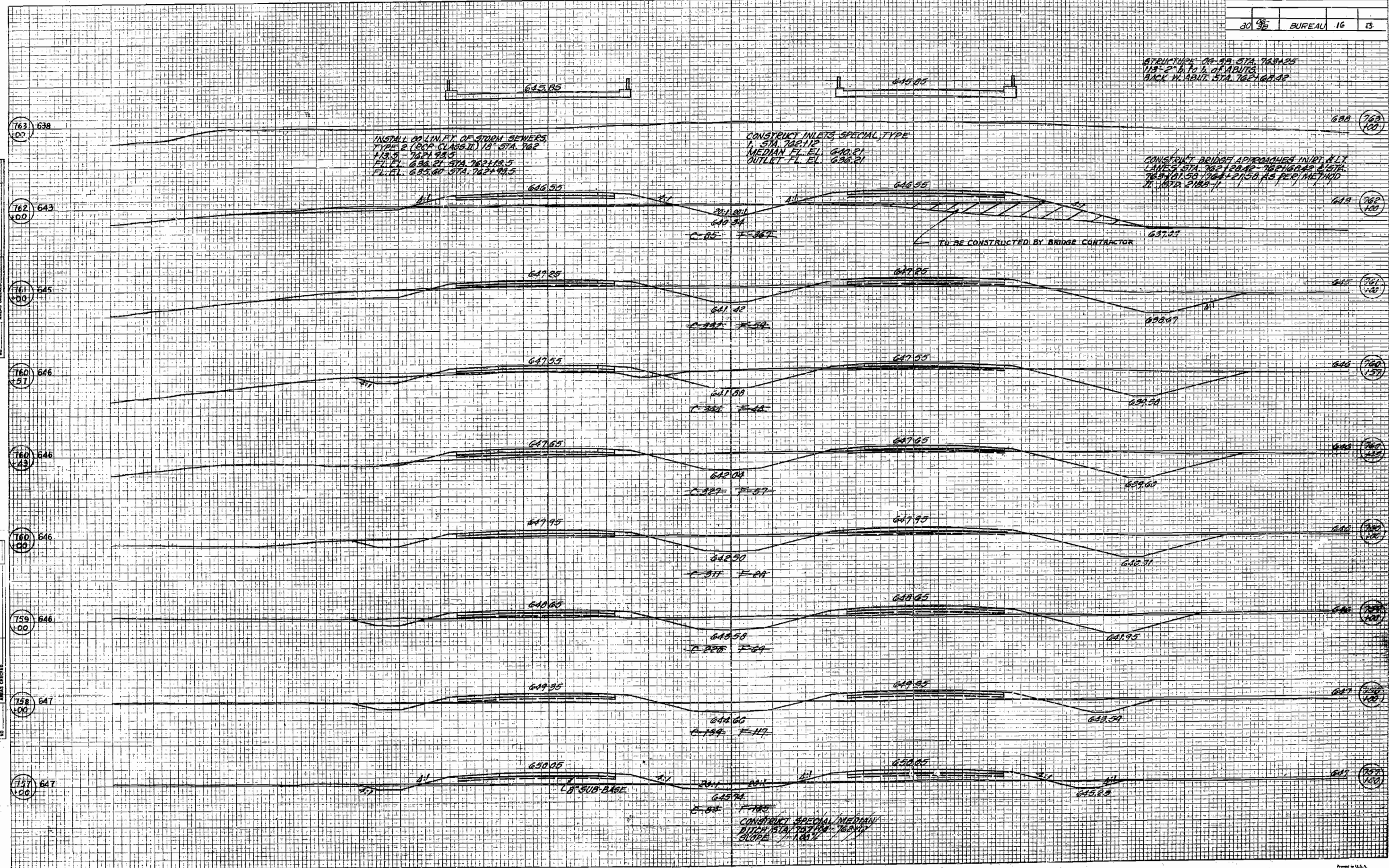
| | | | |
|--------------------------|--------------|---------|--------------|
| FORM NO. | SECTION | COUNTY | TOTAL SHEETS |
| 80 | 36 | BUREAU | 16 |
| STA. 155 | TO STA. 7+55 | | 12 |
| AD DIST. NO. 7, ILLINOIS | | PROJECT | |

DATE: _____ BY: _____
 ORIGINAL SURVEY PLOTTED _____
 NOTE BOOK _____
 AREA CHECKED _____

DATE: _____ BY: _____
 ORIGINAL SURVEY PLOTTED _____
 NOTE BOOK _____
 AREA CHECKED _____



CHANNEL CHANGE
 MAPLE GROVE CREEK

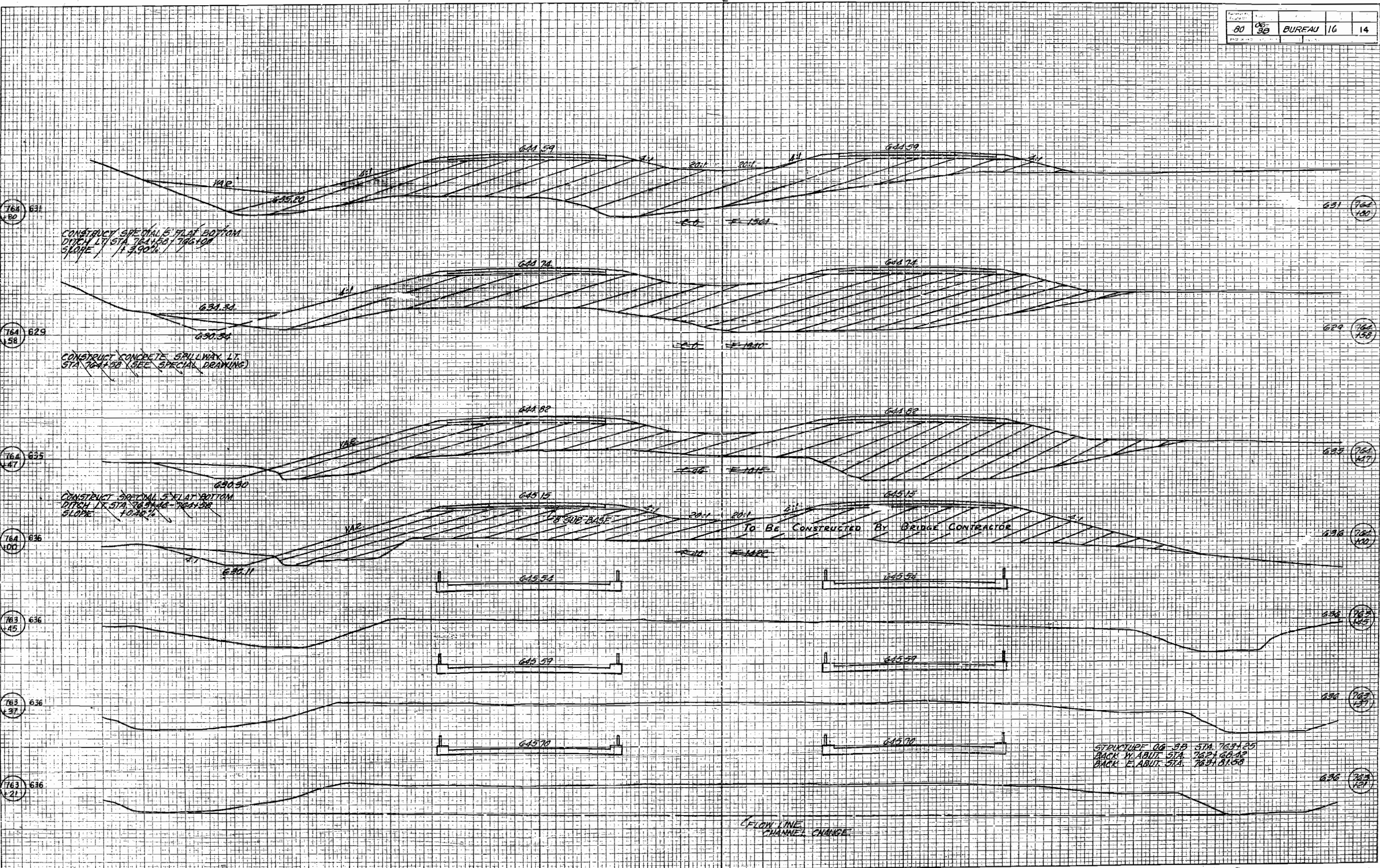


BY _____ DATE _____
 SURVEYED _____
 PLOTTED _____
 CHECKED _____
 FINAL SURVEY _____
 SITE BOOK _____
 AREA CHECKED _____
 NO. _____

BY _____ DATE _____
 SURVEYED _____
 PLOTTED _____
 CHECKED _____
 FINAL SURVEY _____
 SITE BOOK _____
 AREA CHECKED _____
 NO. _____

DATE
BY
SURVEY
PLOTTER
NOTE BOOK
AREA DECIDED

DATE
BY
SURVEY
PLOTTER
NOTE BOOK
AREA DECIDED



STRUCTURE 06-30 STA. 763+25
BACK W. ABUT. STA. 762+60.00
BACK E. ABUT. STA. 763+81.00

CO 36-38 BUREAU 16 14-A
 765+25 769+00
 FA EB-2

DATE _____ BY _____
 ORIGINAL SURVEY BOOK NO. _____
 SURVEYED, CORRECTED, RECALCULATED, REPLATED, AREA CHECKED

DATE _____ BY _____
 ORIGINAL SURVEY BOOK NO. _____
 SURVEYED, CORRECTED, RECALCULATED, REPLATED, AREA CHECKED

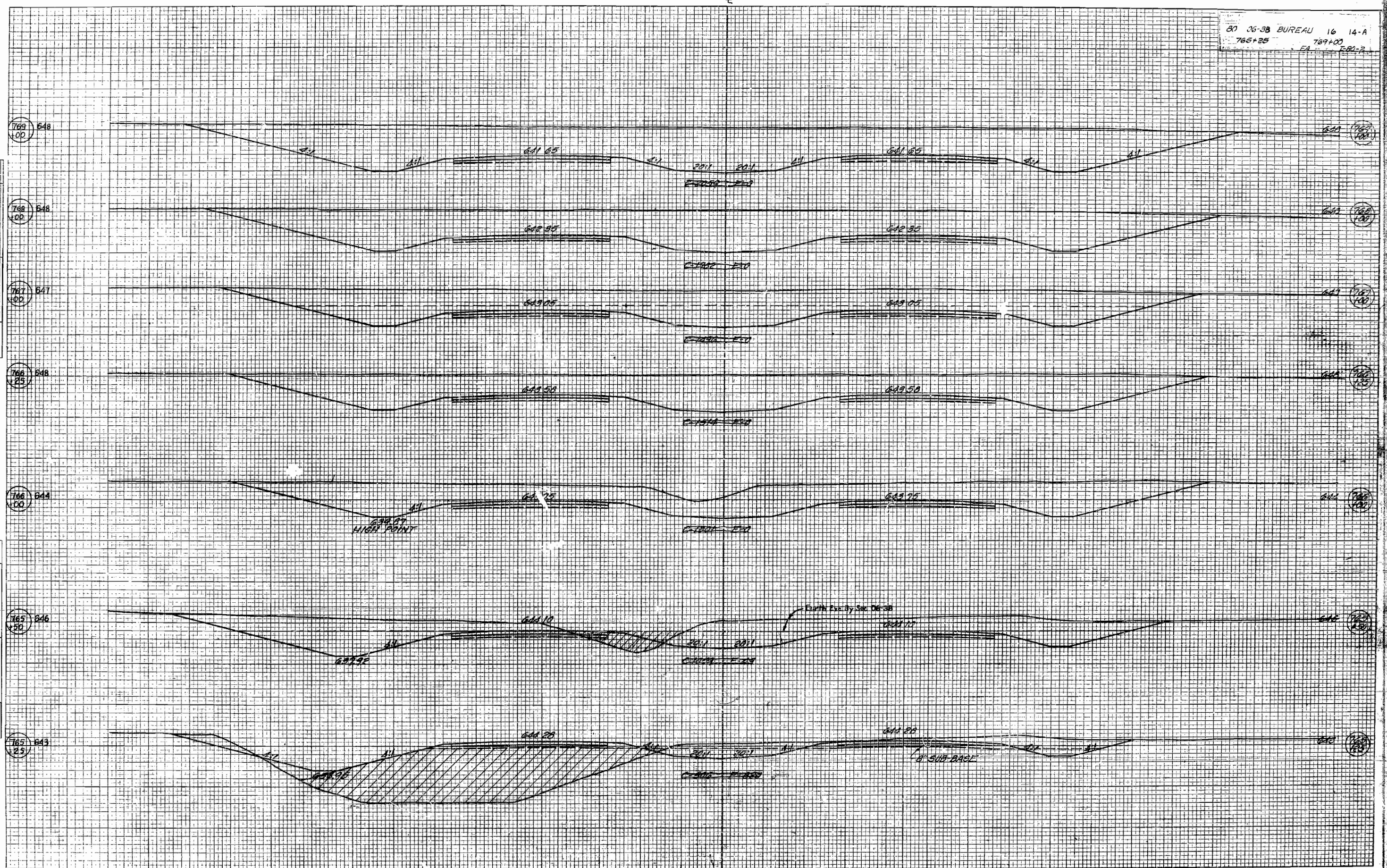


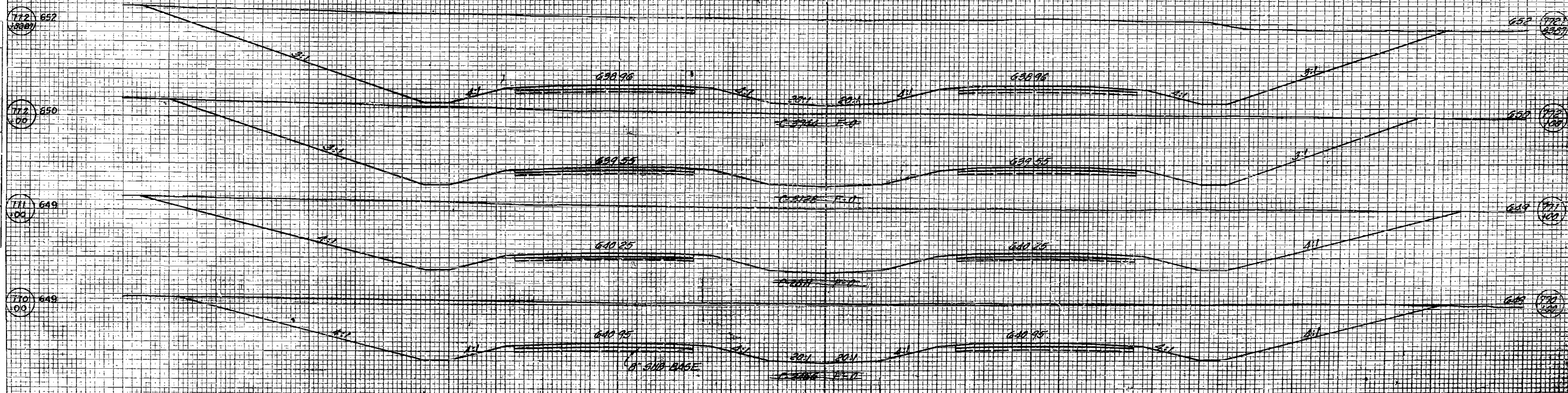
PLATE 3 CROSS SECTION B P R STANDARD
 ENGINEERING CO. CHICAGO, ILL.

Printed in U.S.A.
 © ARWRIGHT Trading Club

80 06-38 BUREAU 16 14-B
 770+00 772+83.87
 - FA - E-80-2

DATE _____
 BY _____
 SURVEYED _____
 PLOTTED _____
 AREA _____
 CHECKED _____
 NO. _____

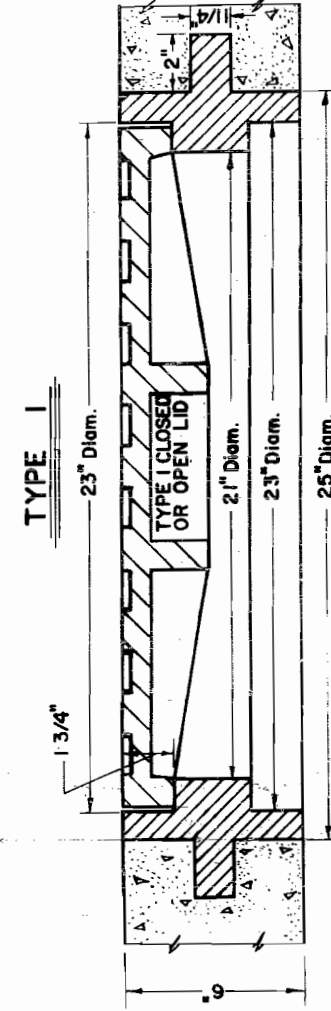
DATE _____
 BY _____
 SURVEYED _____
 PLOTTED _____
 AREA _____
 CHECKED _____
 NO. _____



FROM STA 770+00 MAKE CUT FOR EQUIPMENT
 ENTRANCE TO SECTION ON G-1 START TO NATURAL
 GROUND 40' AHEAD OF THE CUT POINT.
 CREATE A CUT - 60' TO 100' EARTH FACED.

FAI 80 06-3B BUREAU 16 15

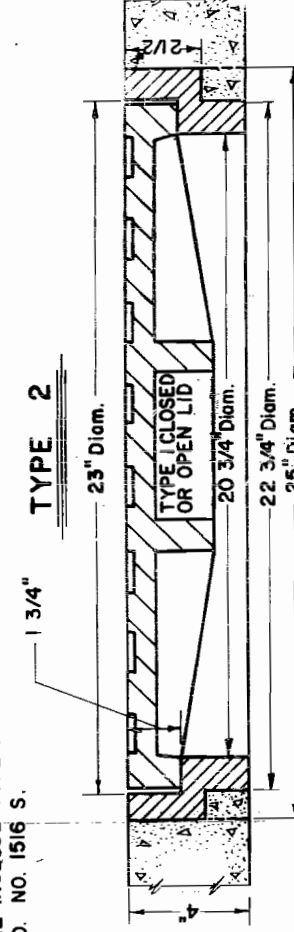
DETAILS OF CAST IRON FRAME, SPECIAL TYPE 1 AND TYPE 2



ANCHOR RING TO BE CAST
INTEGRAL AROUND FRAME.

WEIGHT OF FRAME 200 LBS.

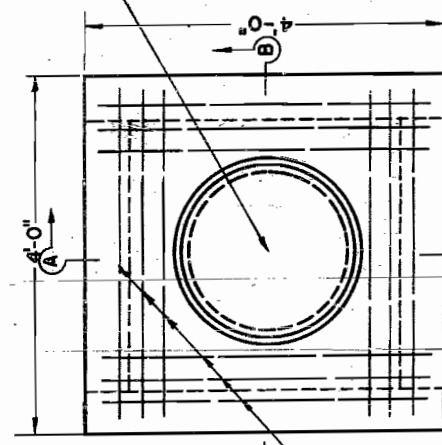
FURNISHING OF CAST IRON FRAME, SPECIAL
TYPE 1 AND TYPE 2 SHALL INCLUDE TYPE 1
CLOSED OR OPEN LID, STD. NO. 1516 S.



WEIGHT OF FRAME 90 LBS.

INLETS, SPECIAL

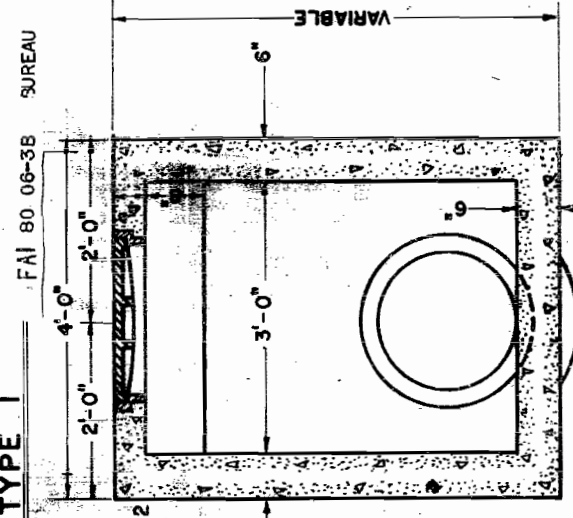
Scale 3/4" = 1'-0"



4 BARS

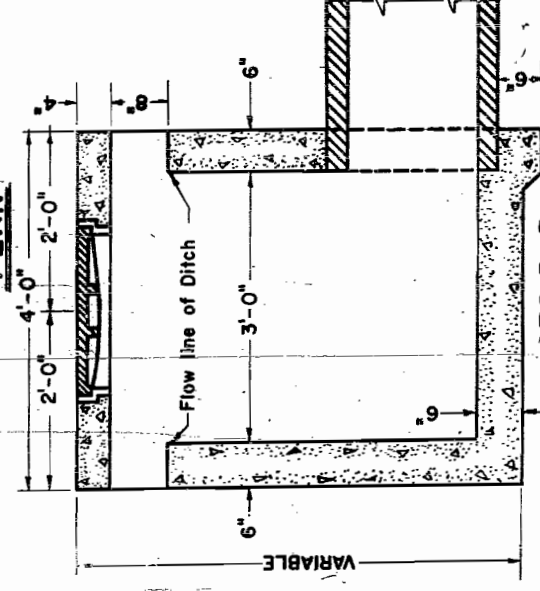
INLETS SPECIAL TYPE 1 TO BE
REINFORCED WITH # 4 BARS AT 12"
CENTERS WHEN THE VARIABLE DEPTH
EXCEEDS 7'-6" AND THEIR COST AND
INSTALLATION IS TO BE INCLUDED IN
THE CONTRACT UNIT PRICE FOR
INLETS SPECIAL TYPE 1.

TYPE 1



SEC. A-A

PLAN



SEC. B-B

NOTES:

STEPS TO BE INSTALLED WHEN DEPTH OF INLET
EXCEEDS 4'-0" AND SHALL CONFORM TO THOSE USED IN
MANHOLE TYPE A, AND THEIR COST IS TO BE INCLUDED
IN THE UNIT PRICE FOR INLETS SPECIAL TYPE 1.

CONSTRUCT NUMBER OF OPENINGS AS DIRECTED
BY THE ENGINEER.

CLASS "X" CONCRETE SHALL BE USED THROUGHOUT.
THE INLET SHALL BE PAID FOR AT THE CONTRACT
UNIT PRICE EACH FOR INLETS SPECIAL-TYPE 1, WHICH
PRICE SHALL INCLUDE THE COST OF THE CAST IRON
FRAME, SPECIAL-TYPE 2; TYPE 1 CLOSED LID AND
REINFORCEMENT BARS, AND SHALL BE PAYMENT IN FULL
FOR FURNISHING ALL MATERIAL AND FOR CONSTRUCTING
THE WORK COMPLETE IN PLACE.