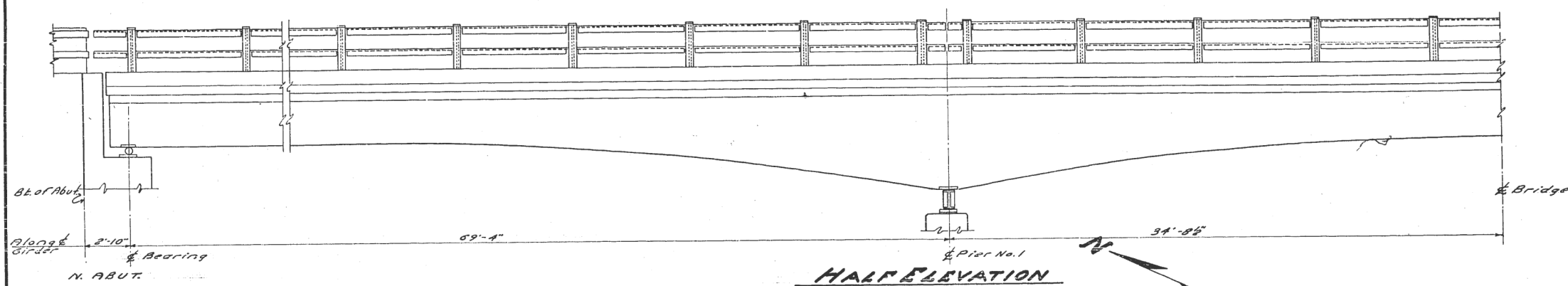


STATE OF ILLINOIS
DEPARTMENT OF PUBLIC WORKS & BUILDINGS
DIVISION OF HIGHWAYS

ROUTE NO.	SECTION	COUNTY	TOTAL SHEETS	SHEET NO.	SHEET NO. 2 9 SHEETS
S. B. L. / 12 VR2B	WABASH	19	12		
FED. ROAD DIST. NO. 7		ILLINOIS		FED. AID PROJECT	



LIST OF BARS IN SLAB

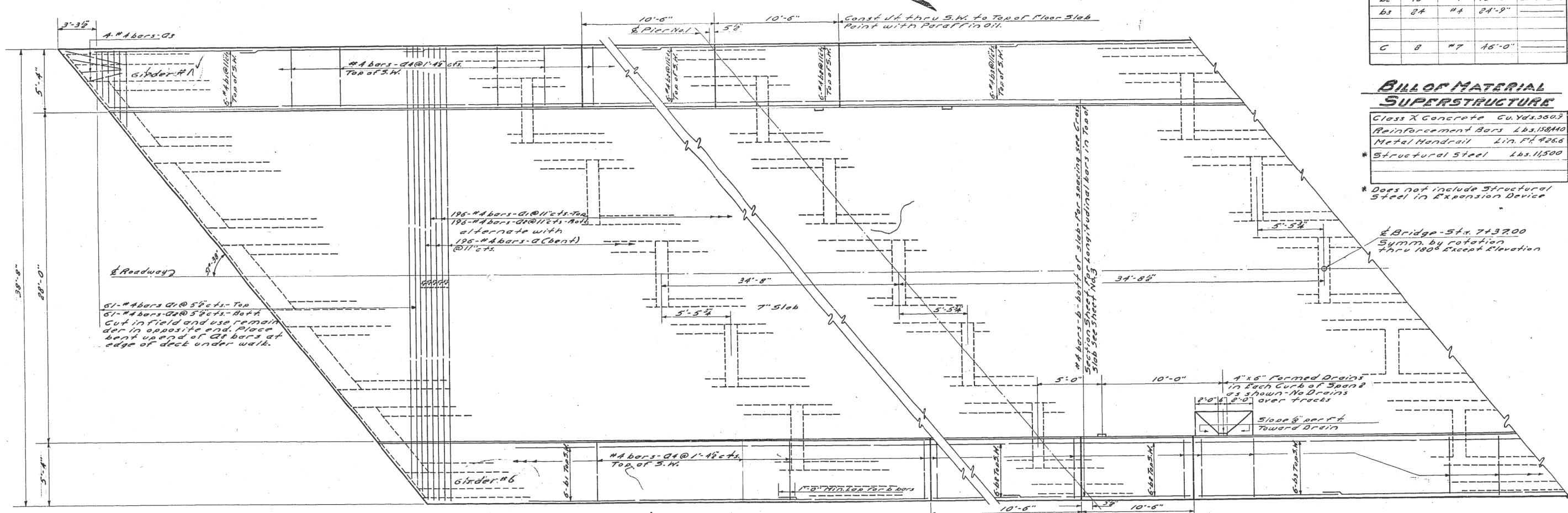
BAR NO.	SIZE	LENGTH	SHAPE
a	196 #4	39'-8"	~
a1	257 #4	38'-1"	~
a2	257 #4	40'-6"	~
a3	8 #4	4'-0"	~
a4	308 #4	6'-0"	~
b	273 #4	31'-0"	~
b1	48 #4	31'-5"	~
b2	48 #4	10'-0"	~
b3	24 #4	24'-9"	~
c	8 #7	16'-0"	~

BILL OF MATERIAL SUPERSTRUCTURE

Class X Concrete	Cu. Yds. 350.3
Reinforcement Bars	Lbs. 15840
Metal Handrail	Lin. Ft. 4266
Structural Steel	Lbs. 11500

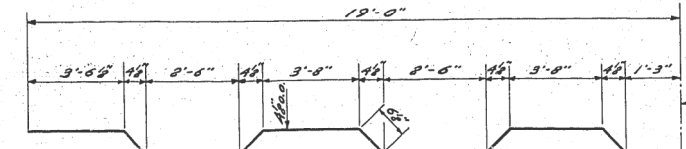
* Does not include structural steel in expansion device

Bridge 5 x 7 + 3700
Symm. by rotation
thru 180° except Elevation

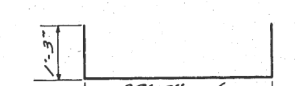


PLAN OF DECK

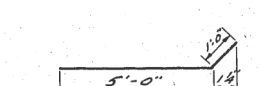
DESIGNED	W. N. Sommer	EXAMINED	W. E. Hanson
CHECKED	J. Kellogg	PASSED	E. J. ...
DRAWN	J. C. Pulley	APPROVED	E. J. ...
CHECKED	W. N. S.		



BAR-A



BAR-B



BAR-C

SUPERSTRUCTURE

C.C.C. 35 T. R. OVERHEAD
CHERRY ST. MT. CARMEL
S.B.T. RT. 1 SECTION 12 VR 2B
WABASH COUNTY

STATE OF ILLINOIS
DEPARTMENT OF TRANSPORTATION

USER NAME = SUSERS	DESIGNED -	REVISED -	F.A.P. RTE. 332	SECTION (12VR, 28)B	COUNTY Wabash	TOTAL SHEETS 32	SHEET NO. 26
PLOT SCALE = 5/8" = 1'	DRAWN -	REVISED -	CONTRACT NO. 74320				
PLOT DATE = 5/24/53	CHECKED -	REVISED -	ILLINOIS FED. AID PROJECT				

MODEL NUMBER MATRICES
FILE NUMBER: 81125