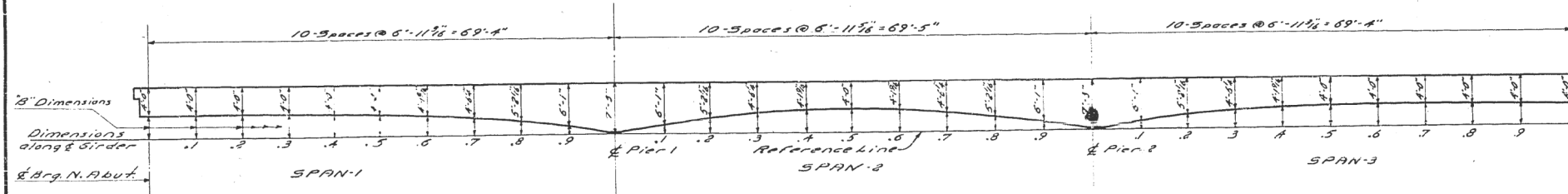


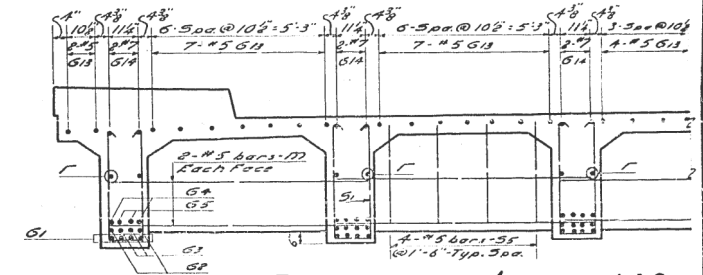
STATE OF ILLINOIS
DEPARTMENT OF PUBLIC WORKS & BUILDINGS
DIVISION OF HIGHWAYS

ROUTE NO.	SECTION	COUNTY	TOTAL SHEETS	SHEET NO.
S. B. I.	12VR-2B	WABASH	19	13
FED. ROAD DIST. NO. 1	ILLINOIS	FED. AID PROJECT		

SHEET NO. 3
9 SHEETS



Girder No. 1 Elev. 455.15
Girder No. 2 Elev. 455.24
Girder No. 3 Elev. 455.30
Girder No. 4 Elev. 455.28
Girder No. 5 Elev. 455.18
Girder No. 6 Elev. 455.04

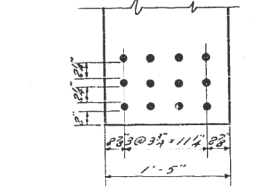


HALF SECTION AT SPAN 1 & 3
Note: Longitudinal steel is shown for bottom of outside girder. Typical for all girders.

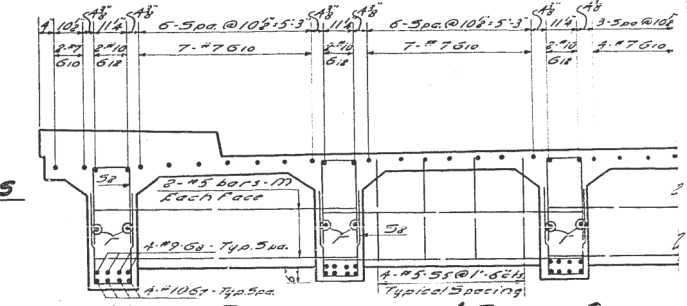
TABLE OF "B" DIMENSIONS

	1	2	3	4	5	6	7	8	9	Pier 1	1	2	3	4	5	6	7	8	9	Pier 2	1	2	3	4	5	6	7	8	9	Pier 3
Girder-1	3'-7 1/2"	3'-6 3/4"	3'-5 1/4"	3'-5"	3'-5"	3'-3 3/4"	2'-10 1/2"	2'-3 3/4"	1'-4 1/2"	2 1/2"	1'-4 1/2"	2'-2 1/2"	2'-10 1/2"	3'-2 1/2"	3'-4 1/2"	3'-2 1/2"	2'-9 1/2"	2'-1 1/2"	1'-2 1/2"	0	1'-1 1/2"	1'-11 1/2"	2'-6 1/2"	2'-10 1/2"	2'-11 1/2"	2'-11 1/2"	2'-11 1/2"	2'-11 1/2"	2'-11 1/2"	2'-11 1/2"
Girder-2	3'-7 1/2"	3'-6 3/4"	3'-6 1/8"	3'-5 3/8"	3'-5 1/4"	3'-4"	2'-11 1/2"	2'-3 3/4"	1'-4 1/2"	2 1/2"	1'-4 1/2"	2'-3 1/2"	2'-10 1/2"	3'-3"	3'-4 1/2"	3'-2 1/2"	2'-9 1/2"	2'-1 1/2"	1'-2 1/2"	0	1'-1 1/2"	1'-11 1/2"	2'-7 1/2"	2'-11 1/2"	3'-0 1/2"	2'-11 1/2"	2'-11 1/2"	2'-11 1/2"	2'-11 1/2"	2'-11 1/2"
Girder-3	3'-7 1/2"	3'-6 3/4"	3'-6 1/2"	3'-6 1/4"	3'-5 1/4"	3'-4 1/2"	2'-11 1/2"	2'-3 1/4"	1'-4 1/2"	2 1/2"	1'-4 1/2"	2'-3 1/2"	2'-10 1/2"	3'-3 1/2"	3'-4 1/2"	3'-2 1/2"	2'-9 1/2"	2'-1 1/2"	1'-2 1/2"	0	1'-1 1/2"	1'-11 1/2"	2'-7"	2'-11 1/2"	3'-0 1/2"	2'-11 1/2"	2'-11 1/2"	2'-11 1/2"	2'-11 1/2"	2'-11 1/2"
Girder-4	3'-7 1/2"	3'-6 3/4"	3'-6 1/2"	3'-6 1/4"	3'-5 1/4"	3'-4 1/2"	2'-11 1/2"	2'-3 1/4"	1'-4 1/2"	2 1/2"	1'-4 1/2"	2'-3 1/2"	2'-10 1/2"	3'-3 1/2"	3'-4 1/2"	3'-2 1/2"	2'-9 1/2"	2'-1 1/2"	1'-2 1/2"	0	1'-1 1/2"	1'-11 1/2"	2'-6 1/2"	2'-11 1/2"	3'-0 1/2"	2'-11 1/2"	2'-11 1/2"	2'-11 1/2"	2'-11 1/2"	2'-10 1/2"
Girder-5	3'-7 1/2"	3'-6 3/4"	3'-6 1/2"	3'-6 1/4"	3'-5 1/4"	3'-4 1/2"	2'-11 1/2"	2'-3 1/4"	1'-4 1/2"	2 1/2"	1'-4 1/2"	2'-3 1/2"	2'-10 1/2"	3'-3 1/2"	3'-4 1/2"	3'-2 1/2"	2'-9 1/2"	2'-1 1/2"	1'-2 1/2"	0	1'-1 1/2"	1'-11 1/2"	2'-6 1/2"	2'-11 1/2"	3'-0 1/2"	2'-11 1/2"	2'-11 1/2"	2'-11 1/2"	2'-10 1/2"	2'-10 1/2"
Girder-6	3'-7 1/2"	3'-7 1/4"	3'-6 1/2"	3'-6 1/8"	3'-5 1/4"	3'-4 1/2"	2'-11 1/2"	2'-3 1/4"	1'-5"	3 1/2"	1'-4 1/2"	2'-3 1/2"	2'-10 1/2"	3'-3 1/2"	3'-4 1/2"	3'-2 1/2"	2'-9 1/2"	2'-1 1/2"	1'-2 1/2"	0	1'-1 1/2"	1'-11 1/2"	2'-6 1/2"	2'-10 1/2"	2'-11 1/2"	2'-10 1/2"	2'-10 1/2"	2'-10 1/2"	2'-10 1/2"	2'-10 1/2"

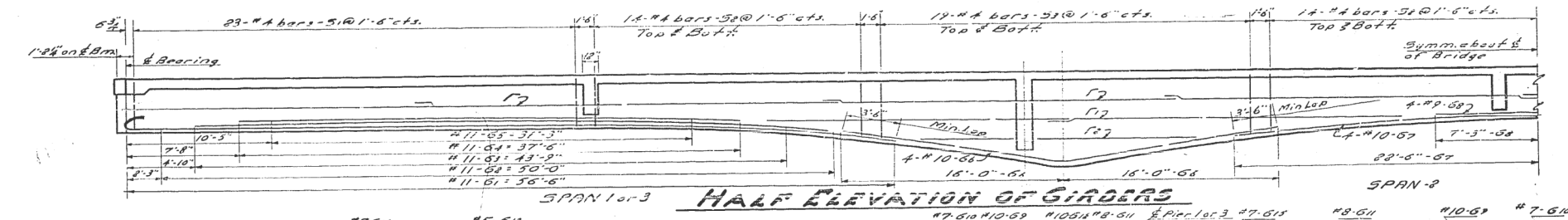
Girder Ordinates include Dead Load Deflection. Contractor shall also allow for settlement of forms and shrinkage



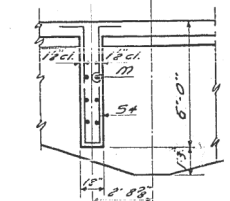
GIRDER DETAILS



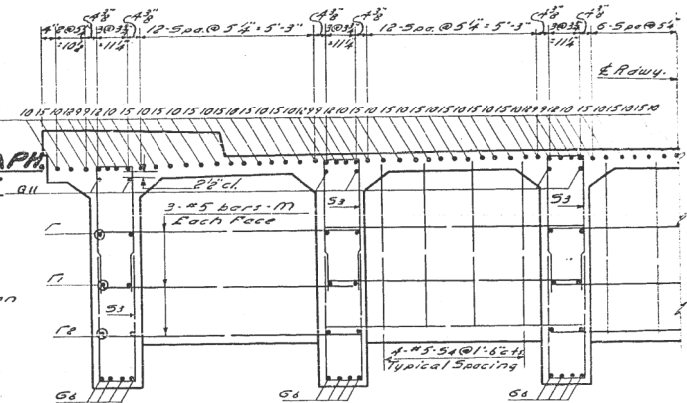
HALF SECTION AT SPAN 2



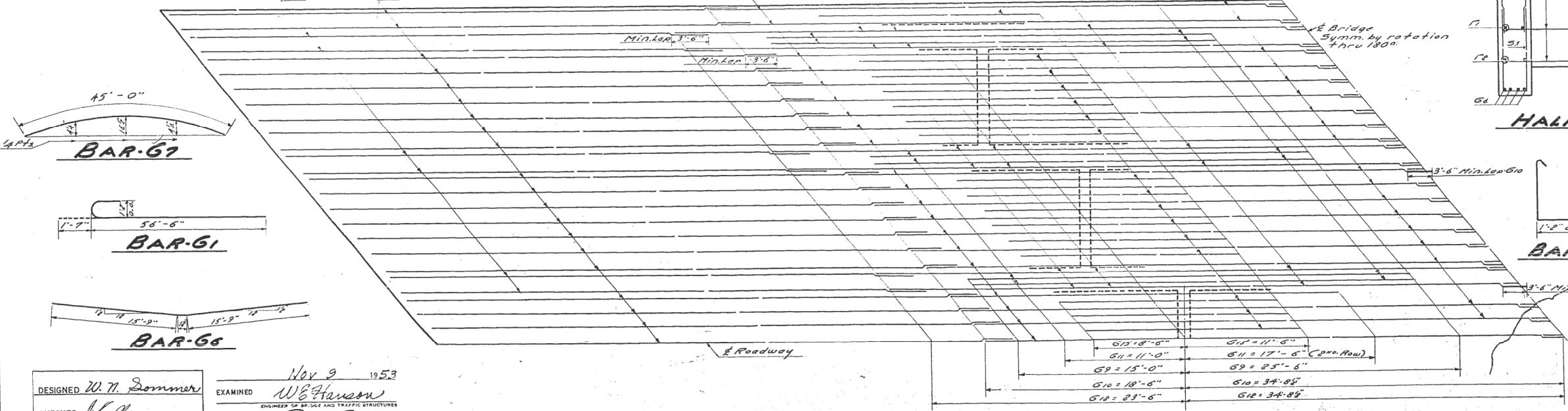
HALF ELEVATION OF GIRDERS



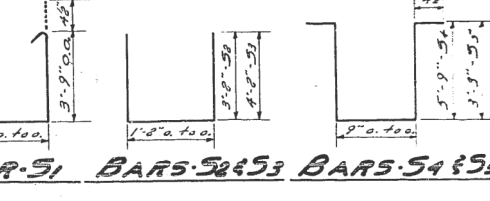
SEC. THRU DIAPHRAGM AT PIERS



HALF SECTION AT PIERS 1 & 2



QUARTER PLAN
Showing Longitudinal Reinforcement in Top of Slab



GIRDER DETAILS
C.C.C. ST. L. RY. OVERHEAD
CHERRY ST. - MT. CARMEL
S.B.I. RT. 1 - SECTION 12VR-2B
WABASH COUNTY

DESIGNED *W. W. Dommer*
CHECKED *J. Kelley*
DRAWN *J. C. Pulley*
CHECKED *WMB*

EXAMINED *W. E. Hanson*
PASSED *E. H. Knight*
APPROVED *E. H. Knight*

Nov 9 1953