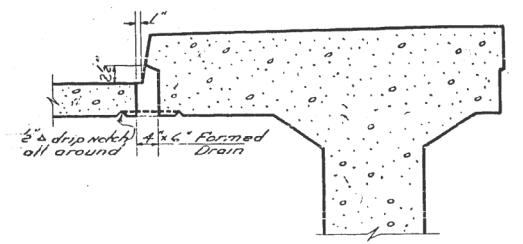


At 1/2 of SPAN 1 OR 3 At PIERS

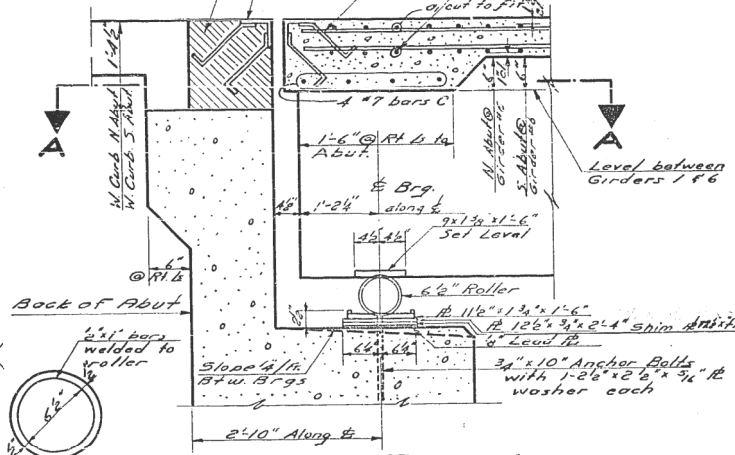


SECTION THRU DRAIN

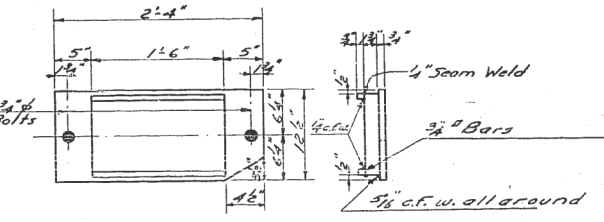
**BAR LIST
GIRDERS & DIAPHRAGMS**

BAR	NO.	SIZE	LENGTH	SHAPE
61	48	#11	58'-1"	—
62	24	#11	50'-0"	—
63	24	#11	43'-9"	—
64	24	#11	37'-5"	—
65	24	#11	31'-3"	—
66	48	#10	32'-6"	—
67	24	#10	45'-0"	—
68	24	#9	14'-6"	—
69	24	#10	40'-6"	—
70	78	#7	55'-0"	—
71	24	#6	28'-6"	—
72	24	#10	60'-0"	—
73	78	#5	53'-9"	—
74	24	#7	48'-9"	—
75	64	#7	30'-0"	—
76	24	#5	27'-3"	—
77	48	#5	24'-6"	—
78	24	#5	21'-0"	—
51	276	#4	9'-5"	□
52	660	#4	7'-6"	□
53	456	#4	9'-6"	□
54	40	#4	13'-0"	□
55	60	#4	8'-0"	□
17	120	#5	7'-9"	—

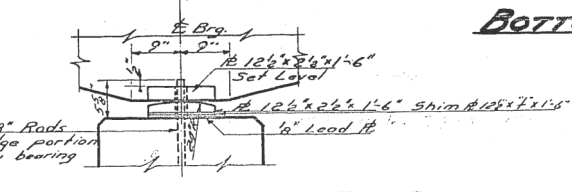
CROSS SECTION
Shaded area to be poured after superstructure falsework has been removed. See Sheet 6 for detail of top board.



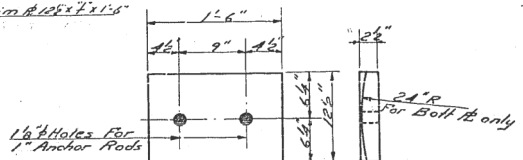
SECTION THRU ABUTS



BOTTOM BEARING AT ABUTS



BEARING DETAIL PIER 2

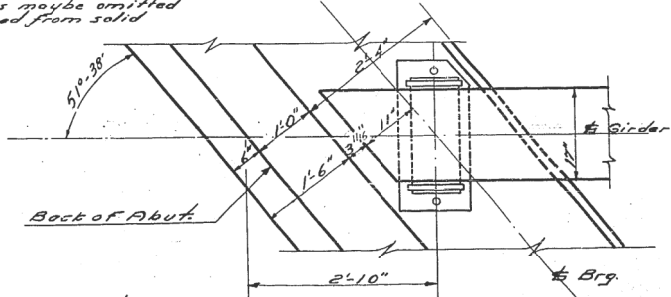


TOP & BOTTOM BS PIER 2

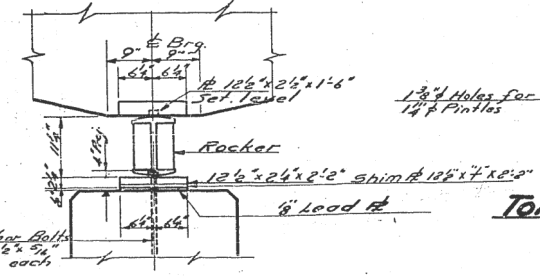
SHIM PLATE THICKNESS 7"

Girder	1	2	3	4	5	6
N. Abut	5/8"	3/4"	1 1/8"	1 1/2"	1 3/4"	0"
Pier #1	5/8"	3/4"	3/4"	5/8"	3/4"	0"
Pier #2	1 1/8"	3/4"	1 1/8"	3/4"	1 1/8"	0"
S. Abut	1 1/8"	1 1/8"	1 1/8"	1 1/8"	1 1/8"	0"

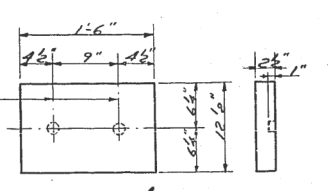
DETAIL OF ROLLERS
Note: 1/2" end projections may be omitted if roller is turned from solid.



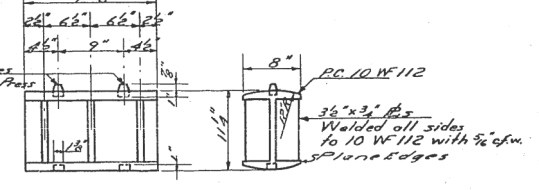
SECTION A-A



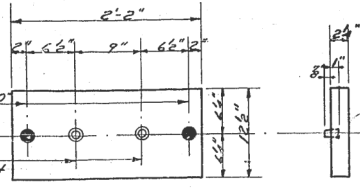
BEARING DETAIL PIER 1



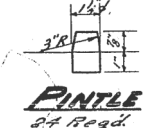
TOP BRG BS PIER 1



DETAIL OF ROCKERS



BOTTOM BRG BS PIER 1



PINTLE

DETAILS

G.C.C. & S.T.L. RY. OVERHEAD
CHERRY ST. - MT. CARMEL
S.B.I. RT. 1 - SECTION 12VR-2B
WABASH COUNTY

DESIGNED W. W. Sommer
CHECKED J. Kellogg
DRAWN K. R. Griffin
CHECKED WMB

EXAMINED W. E. Hanson
PASSED E. J. Hunt
APPROVED E. P. Knight
Acting CHIEF HIGHWAY ENGINEER

Nov 9 1953

MODEL: SMODEL.MAMTMS
FILE NAME: BTLELS

USER NAME = SUSERS	DESIGNED -	REVISED -
PLOT SCALE = 5/8" = 1'	DRAWN -	REVISED -
PLOT DATE = SDATES	CHECKED -	REVISED -
	DATE -	REVISED -

STATE OF ILLINOIS
DEPARTMENT OF TRANSPORTATION

SCALE:	SHEET	OF	SHEETS	STA.	TO	STA.
--------	-------	----	--------	------	----	------

F.A.P. RTE.	SECTION	COUNTY	TOTAL SHEETS	SHEET NO.
332	(12VR, 28)B	Wabash	32	28

CONTRACT NO. 74320
ILLINOIS FED. AID PROJECT