

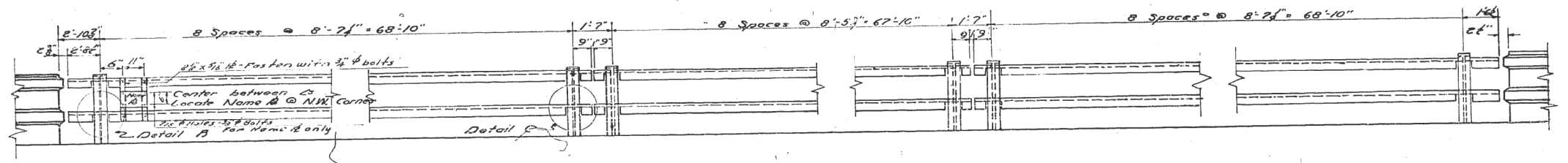
STATE OF ILLINOIS
DEPARTMENT OF PUBLIC WORKS & BUILDINGS
DIVISION OF HIGHWAYS

SECTION	COUNTY	TOTAL SHEETS	SHEET NO.
12VR-2B	WABASH	19	15

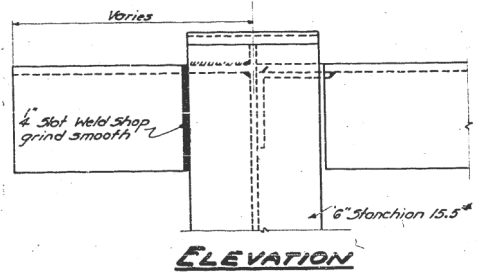
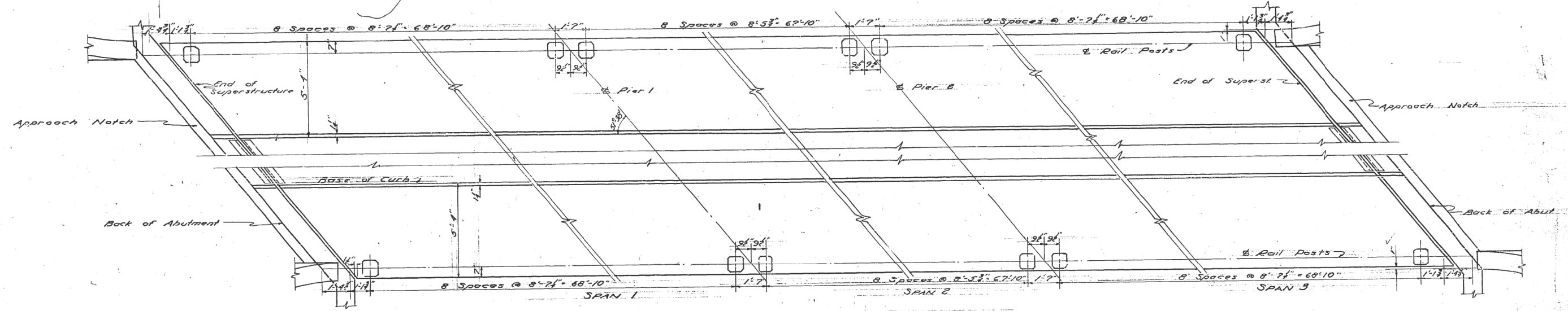
SHEET NO. 5
9 SHEETS

CCC of St. L. Ry.
BUILT 195 BY
STATE OF ILLINOIS
S.B.I. RT. 1 SECT. 12VR-2B
STA 7 + 37
LOADING H&O - S 1 E

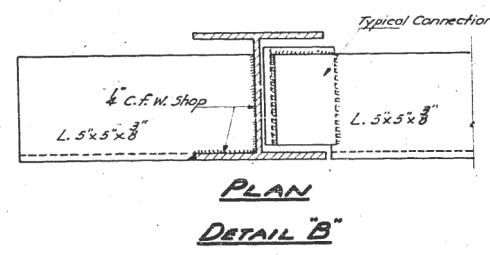
NAME & DATA
See Standard 2113



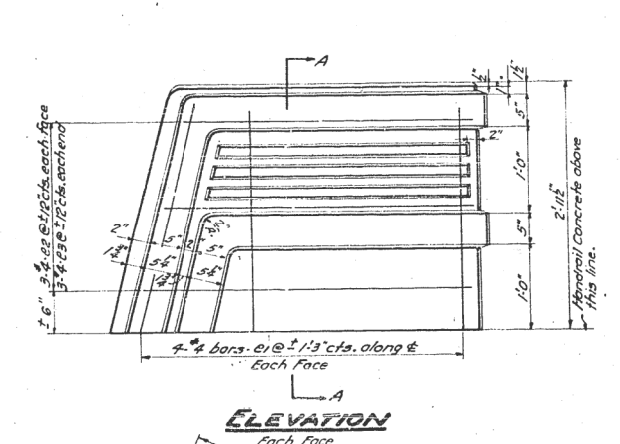
INSIDE ELEVATION OF EAST HANDRAIL



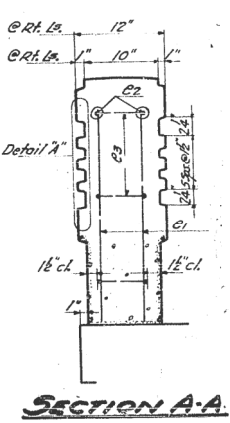
ELEVATION



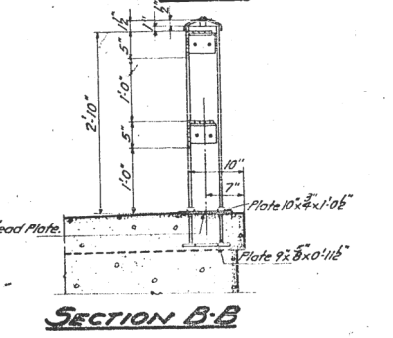
PLAN DETAIL B



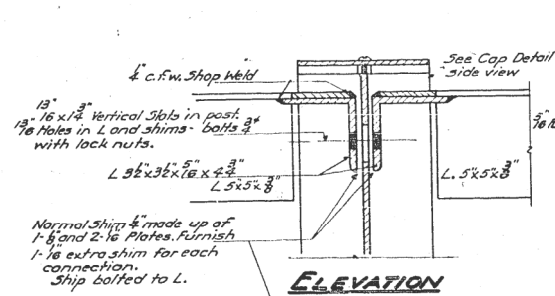
ELEVATION



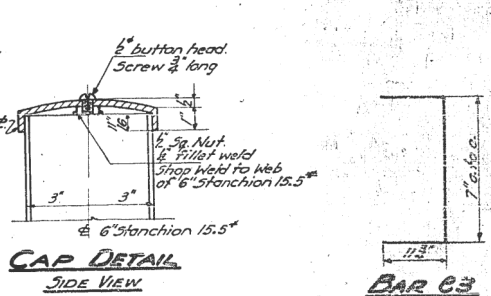
SECTION A-A



SECTION B-B



ELEVATION



CAP DETAIL SIDE VIEW

BAR C3

BILL OF MATERIAL

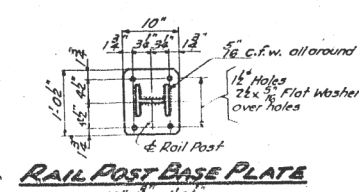
Bar	No.	Size	Length	Shape
c1	32	#4	3'9"	
c2	24	#4	3'5"	
c3	24	#4	2'6"	

Handrail Concrete Cu. Yds. 11.8
Reinforcement Bars Lbs. 1700
Metal Handrail Lin. Ft. 486.8

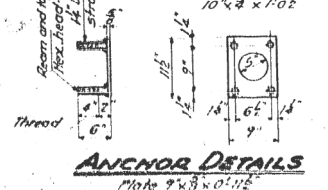
All bars shall be round ASTM A305-49
The size number is the number of inches
in the nominal diameter

HANDRAIL DETAILS

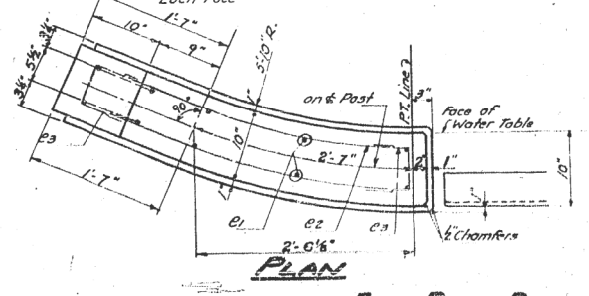
CCC of St. Louis Ry. OVERHEAD
CHERRY STREET MT. CARMEL
S.B.I. RT. 1 SECT. 12VR-2B
WABASH COUNTY



RAIL POST BASE PLATE



ANCHOR DETAILS



END POST DETAILS

DESIGNED W. N. Sommer
CHECKED J. Kelley
DRAWN M. Miller
CHECKED W. N. Sommer

EXAMINED Nov 9 '53
PASSED W. B. Hanson
APPROVED E. P. Knight

MODEL NUMBER
FILE NUMBER

USER NAME = SUSERS	DESIGNED -	REVISED -
PLOT SCALE = 5/8" = 1'	DRAWN -	REVISED -
PLOT DATE = SDATES	CHECKED -	REVISED -
	DATE -	REVISED -

STATE OF ILLINOIS
DEPARTMENT OF TRANSPORTATION

SCALE: SHEET OF SHEETS STA. TO STA.

F.A.P. RTE.	SECTION	COUNTY	TOTAL SHEETS	SHEET NO.
332	(12VR, 28)B	Wabash	32	29

CONTRACT NO. 74320
ILLINOIS FED. AID PROJECT