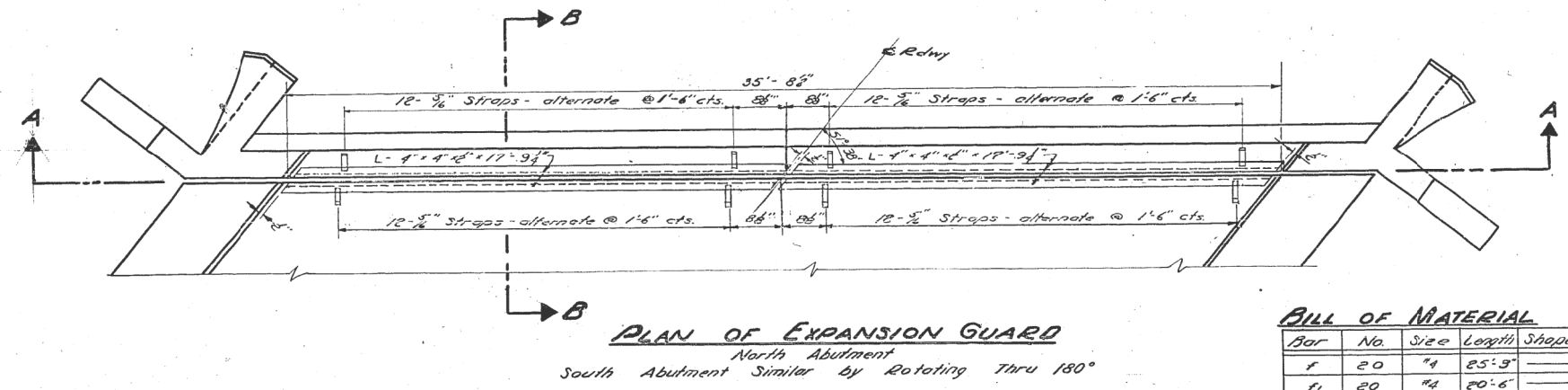
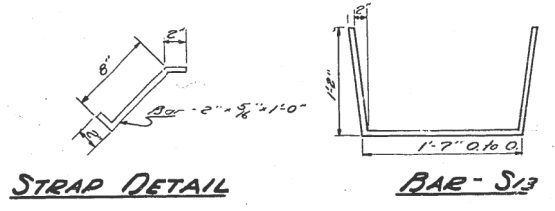
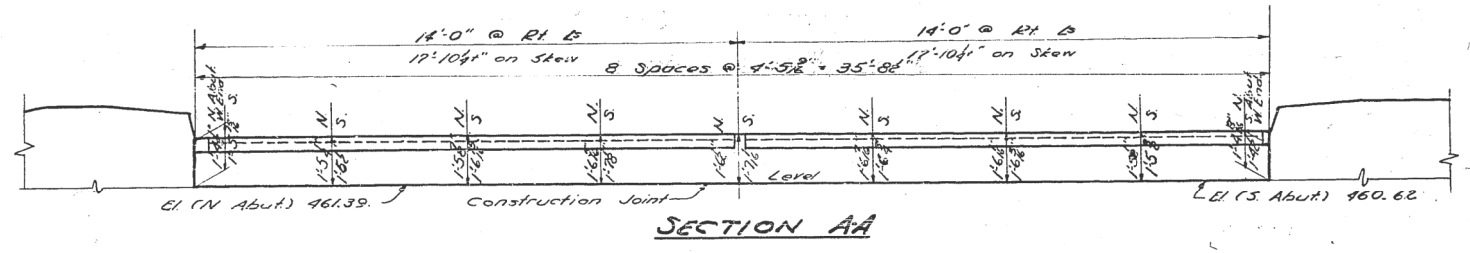
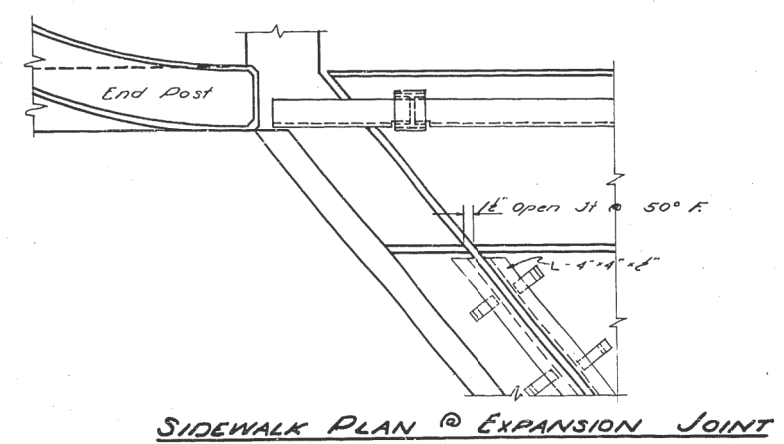
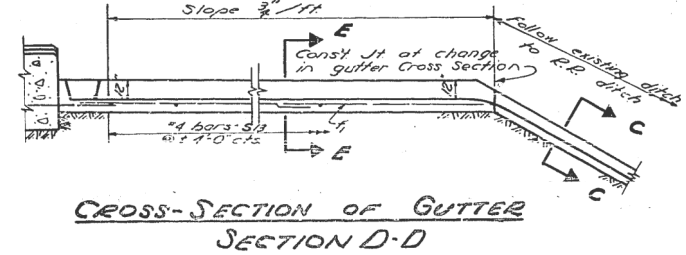
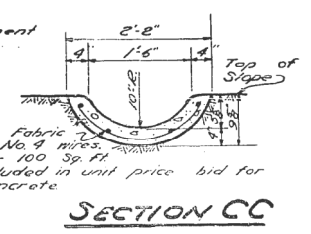
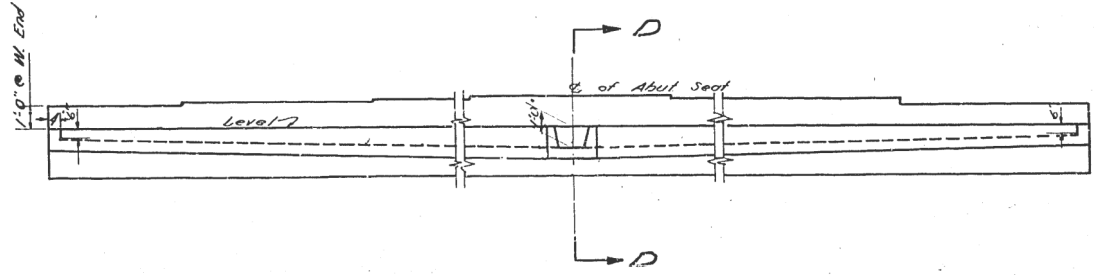
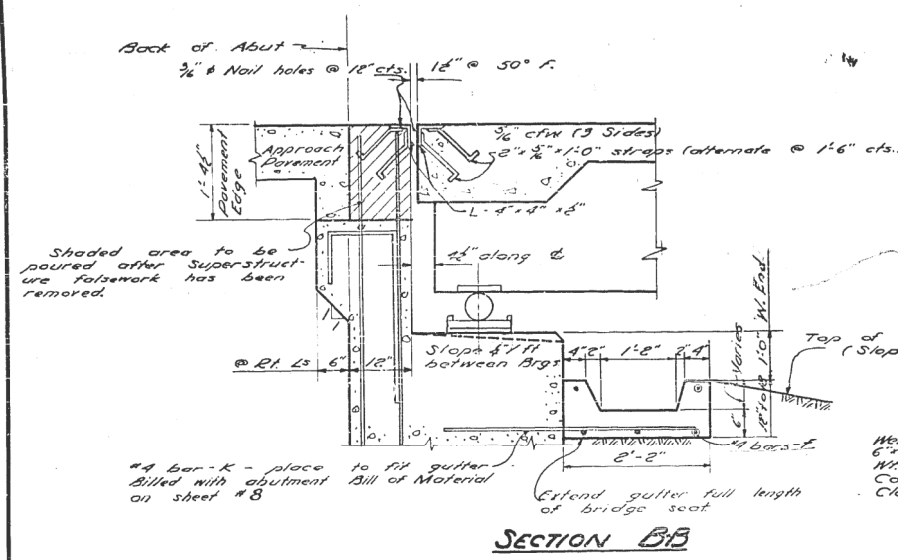


STATE OF ILLINOIS
DEPARTMENT OF PUBLIC WORKS & BUILDINGS
DIVISION OF HIGHWAYS

ROUTE NO.	SECTION	COUNTY	TOTAL SHEETS	SHEET NO.
12VR-2B	WABASH	19	16	9
FED. ROAD DIST. NO. 7		ILLINOIS		FED. AID PROJECT



BILL OF MATERIAL

Bar	No.	Size	Length	Shape
f	20	#4	25'-9"	—
f1	20	#4	20'-6"	—
32	16	#4	3'-11"	∩
Class X Concrete				Cu Yd. 2.9
Reinforcement Bars				Lbs. 650
Structural Steel				Lbs. 2050

DESIGNED *W. N. Sommer*
CHECKED *J. Kellogg*
DRAWN *J. K. Rutherford*
CHECKED *W. N. S.*

EXAMINED *W. E. Hanson*
PASSED *E. P. Knight*
APPROVED *E. P. Knight*
Nov 9 1953
ENGINEER OF BRIDGE AND TRAFFIC STRUCTURES
CHIEF HIGHWAY ENGINEER

The roadway expansion guards shall be fabricated to fit roadway profile in proper position in shop. They shall be paid for as Structural Steel. All surfaces accessible after erection shall receive two shop coats of red lead paint except 5/8" straps which shall not be painted. Estimated weight of two expansion guards complete included in structural steel on sheet 1 equals 2050 lbs.

DRAINAGE DETAILS & EXPANSION GUARD
C.C.C. & S.T.L. RY OVERHEAD
CHERRY ST. MT. CARMEL
S.B.I. RT. 1 SECTION 12VR-2B
WABASH COUNTY

MODEL NUMBER
FILE NUMBER

USER NAME = SUSERS	DESIGNED -	REVISED -
PLOT SCALE = 5/8" = 1'	DRAWN -	REVISED -
PLOT DATE = 5/24/53	CHECKED -	REVISED -
	DATE -	REVISED -

STATE OF ILLINOIS
DEPARTMENT OF TRANSPORTATION

SCALE:	SHEET	OF	SHEETS	STA.	TO	STA.
F.A.P. RTE.	SECTION	COUNTY	TOTAL SHEETS	SHEET NO.		
332	(12VR, 28)B	Wabash	32	30		
CONTRACT NO. 74320						
ILLINOIS FED. AID PROJECT						