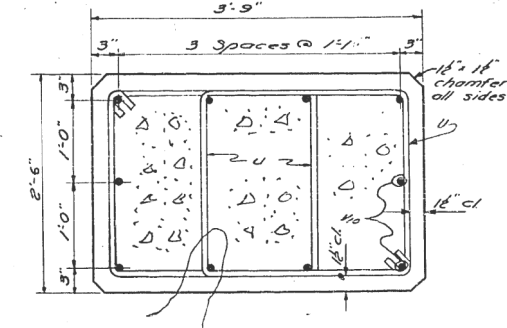
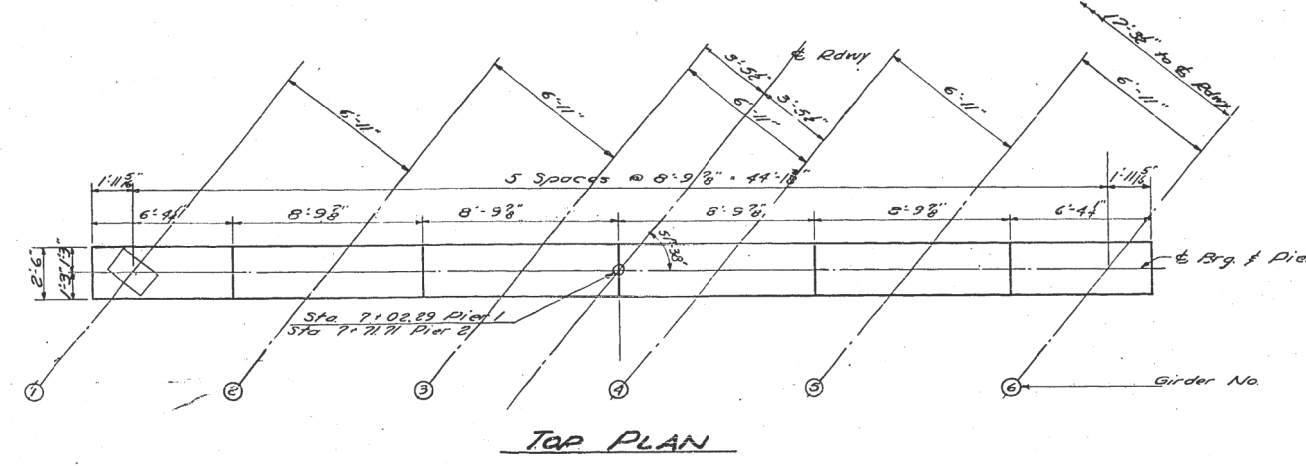
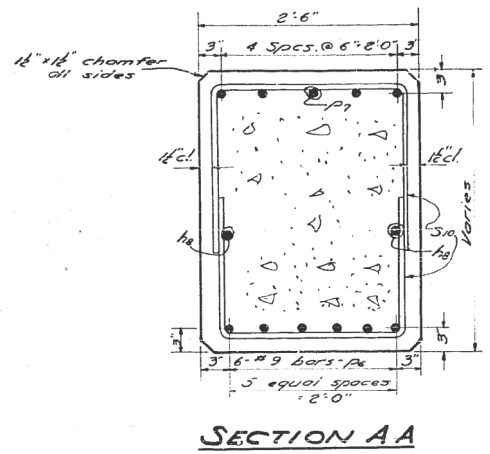


STATE OF ILLINOIS
DEPARTMENT OF PUBLIC WORKS & BUILDINGS
DIVISION OF HIGHWAYS

ROUTE NO.	SECTION	COUNTY	TOTAL SHEETS	SHEET NO.
S. B. I. 1	12VR-2B	WABASH	19	17
FED. ROAD DIST. NO. 7	ILLINOIS	FED. AID PROJECT		

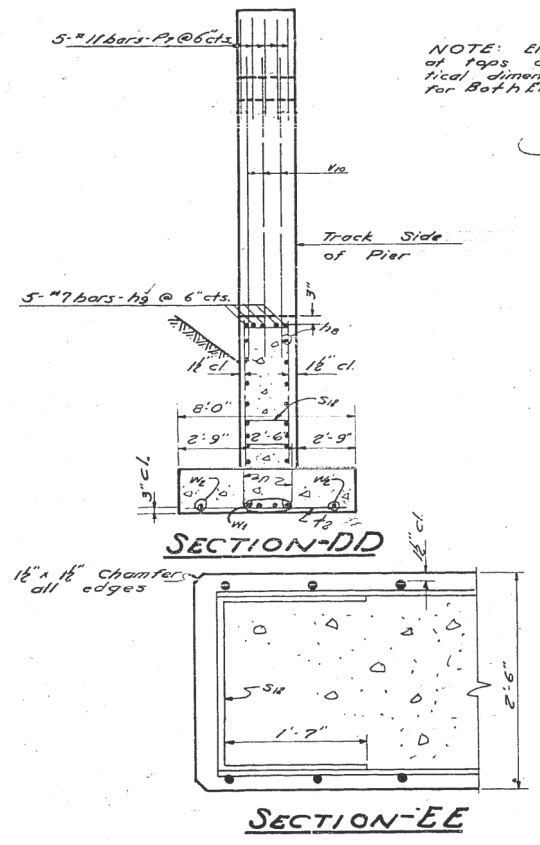
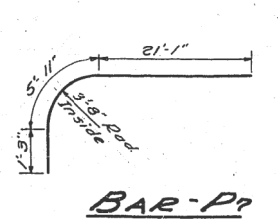
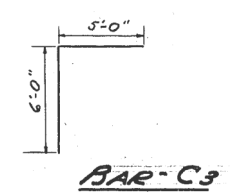
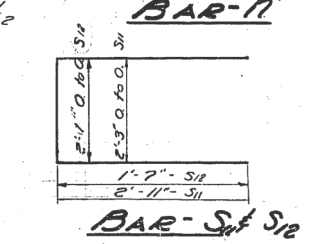
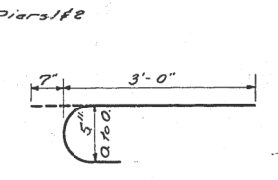
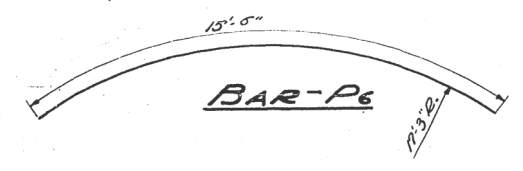
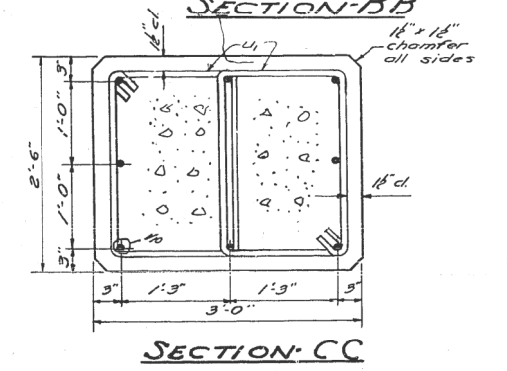
SHEET NO. 7
9 SHEETS



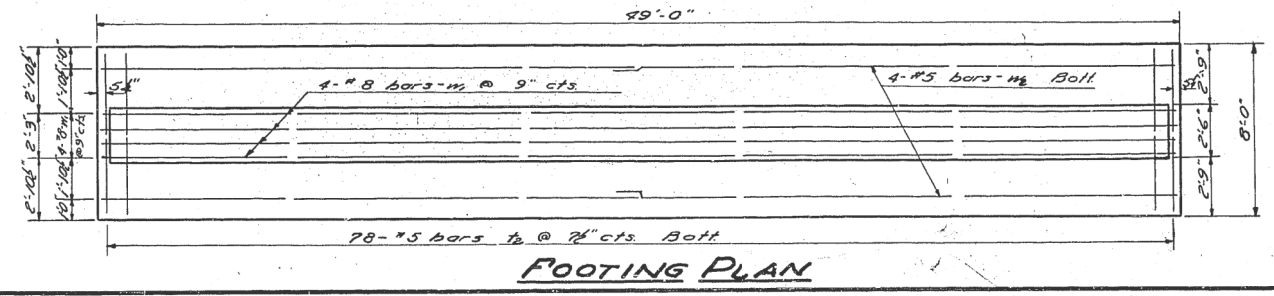
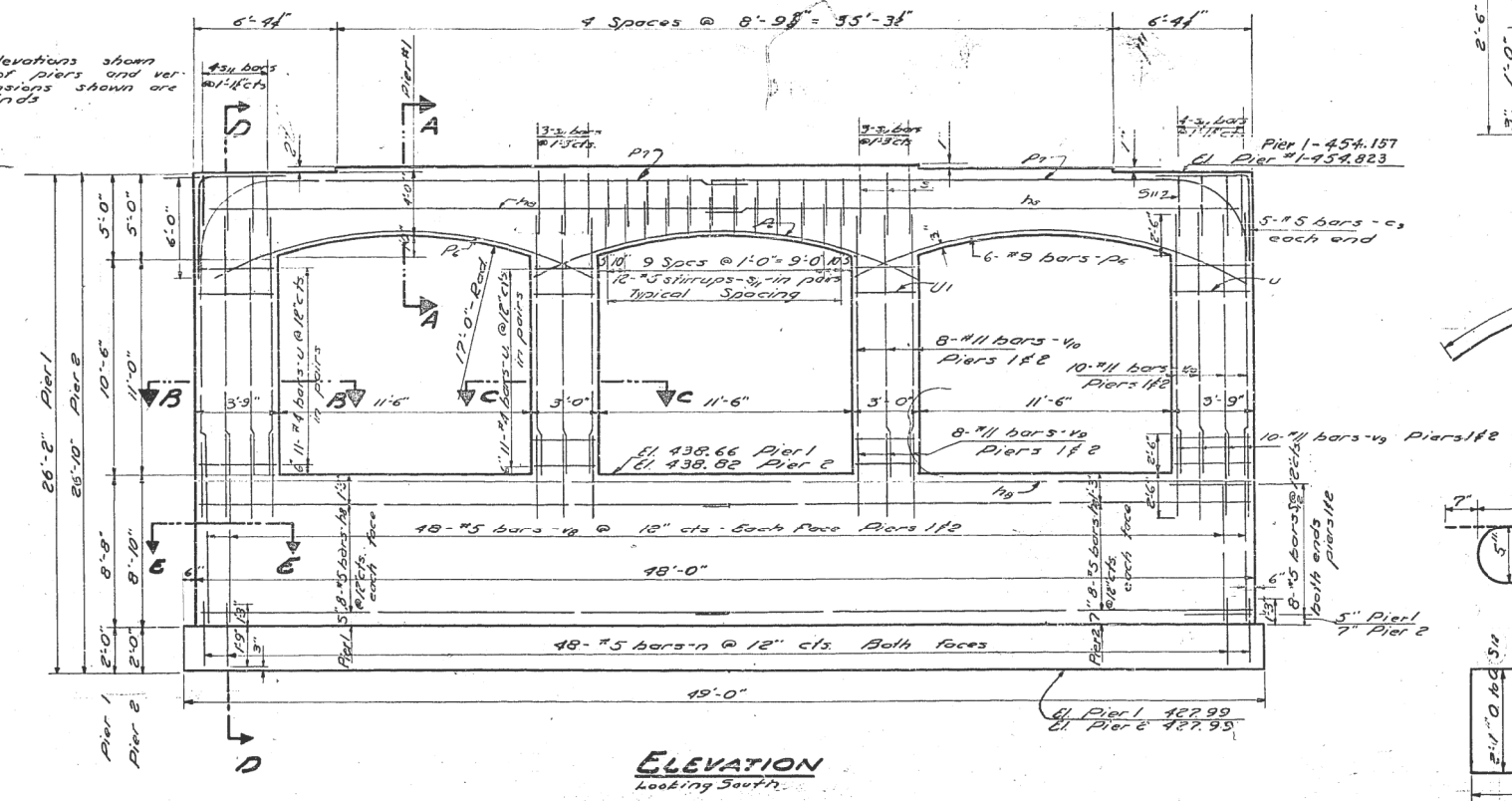
**BILL OF MATERIALS
2 PIERS**

Bar	No.	Size	Length	Shape
Cs	20	#5	11'-0"	┌
ha	72	#5	24'-6"	—
hb	10	#7	42'-6"	—
n	192	#5	3'-7"	—
pe	36	#9	15'-0"	—
pp	20	#11	28'-3"	┌
sl	192	#5	8'-1"	—
slr	32	#5	5'-3"	—
ts	156	#5	7'-6"	—
u	88	#4	10'-0"	—
u	88	#4	8'-0"	—
vs	192	#5	8'-6"	—
vs	72	#11	5'-0"	—
vo	72	#11	13'-3"	—
w	8	#8	48'-6"	—
w	8	#5	25'-0"	—

Class X Conc. Cuyd EOC. 6
Reinforcement Bars Lbs. 22,490



NOTE: Elevations shown of piers and vertical dimensions shown are for both ends.



PIERS 1 & 2
C.C.C. & S.T.L. RY. OVERHEAD
CHERRY ST. MT. CARMEL
S.B.I.R.T. SECTION 12VR-2B
WABASH COUNTY

DESIGNED	W. N. Sommer	EXAMINED	W. E. Hanson
CHECKED	J. Kellogg	PASSED	E. P. Hanson
DRAWN	J. K. Rutherford	APPROVED	E. P. Hanson
CHECKED	W. E.		

Nov 9 1957

USER NAME = SUSERS	DESIGNED -	REVISED -	STATE OF ILLINOIS DEPARTMENT OF TRANSPORTATION	SCALE:	SHEET	OF	SHEETS	STA.	TO	STA.	F.A.P. RTE. 332	SECTION (12VR, 28)B	COUNTY Wabash	TOTAL SHEETS 32	SHEET NO. 31
PLOT SCALE = 5/8" = 1'	CHECKED -	REVISED -									ILLINOIS	FED. AID PROJECT	CONTRACT NO. 74320		
PLOT DATE = 5/24/57	DATE -	REVISED -													

MODEL: SMODEL.MAMITS
FILE NAME: BTLELS