

STATE OF ILLINOIS
DEPARTMENT OF TRANSPORTATION

F.A.P. RTE.	SECTION	COUNTY	TOTAL SHEETS	SHEET NO.
805	(126,126-1)RS-3	CLINTON	10	1
		ILLINOIS	CONTRACT NO. 76P54	

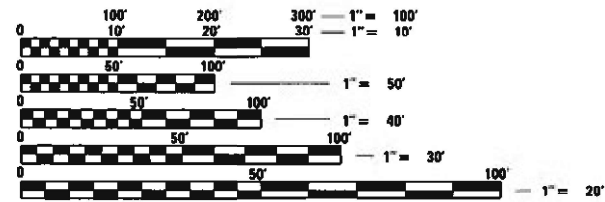
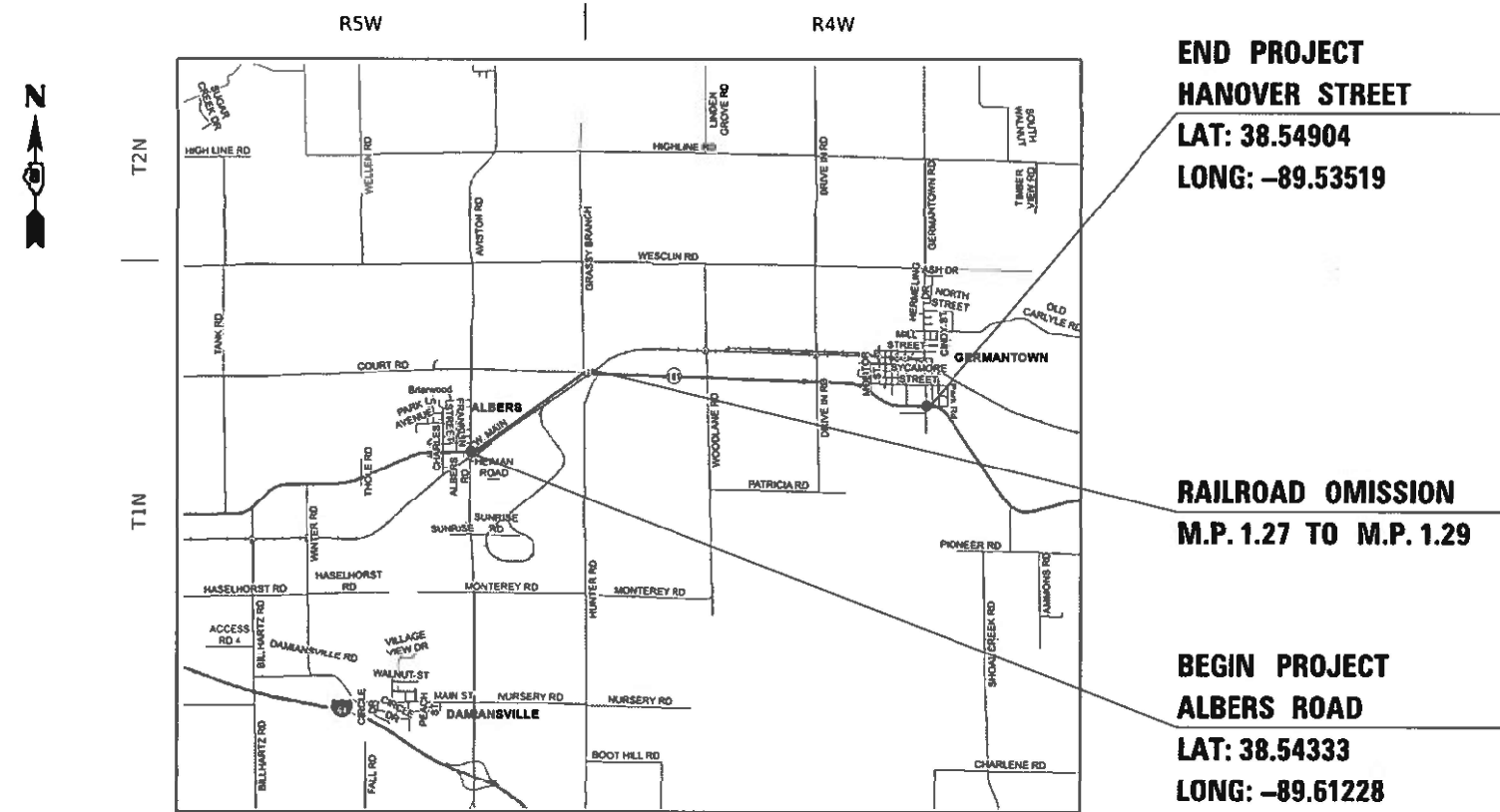
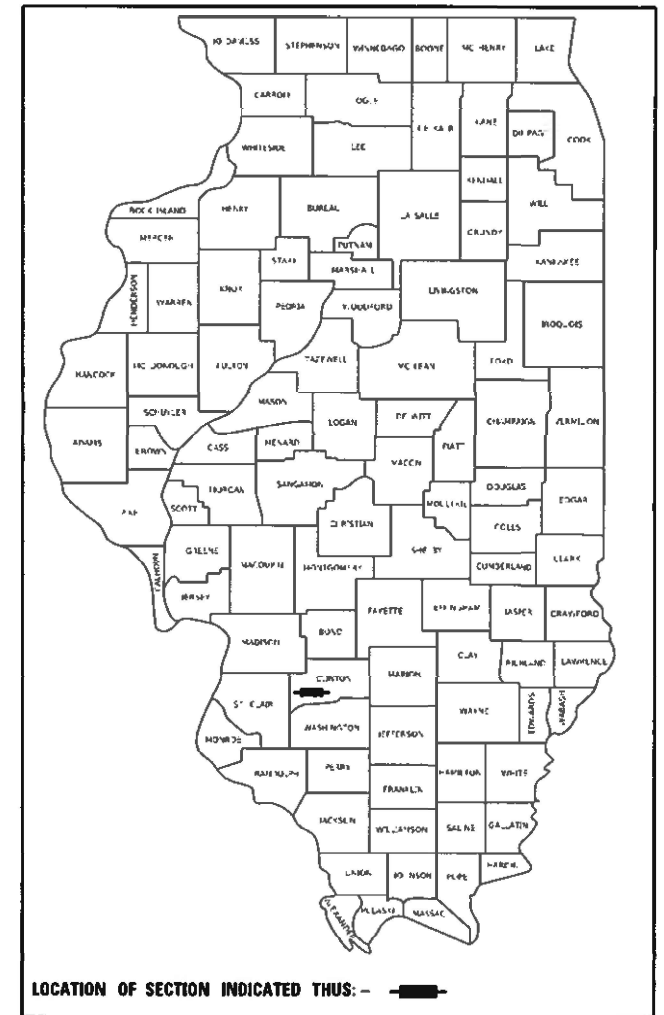
FOR INDEX OF SHEETS, SEE SHEET NO. 2

PROPOSED HIGHWAY PLANS

FAP ROUTE 805 (IL 161)
SECTION (126, 126-1)RS-3
PROJECT COVD-TNX0(499)
SMART OVERLAY
CLINTON COUNTY

C-98-090-21

D-98-059-21



FULL SIZE PLANS HAVE BEEN PREPARED USING STANDARD ENGINEERING SCALES. REDUCED SIZED PLANS WILL NOT CONFORM TO STANDARD SCALES. IN MAKING MEASUREMENTS ON REDUCED PLANS, THE ABOVE SCALES MAY BE USED.

J.U.L.I.E.
JOINT UTILITY LOCATION INFORMATION FOR EXCAVATORS
1-800-892-0123
OR 811

PROJECT ENGINEER: CHERYL KEPLAR (618) 346-3123
PROJECT MANAGER: TONI MANN (618) 346-3189

GROSS LENGTH = 23,443.2 FT. = 4.44 MILE
NET LENGTH = 23,337.6 FT. = 4.44 MILE

CONTRACT NO. 76P54

STATE OF ILLINOIS
DEPARTMENT OF TRANSPORTATION

SUBMITTED *Aug 12 20 21*
Raeth Roberts
REGIONAL ENGINEER

October 1 20 21
[Signature]
ENGINEER OF DESIGN AND ENVIRONMENT

October 21 21
Stephen M. Smith
DIRECTOR OF HIGHWAYS PROJECT IMPLEMENTATION

PRINTED BY THE AUTHORITY
OF THE STATE OF ILLINOIS

INDEX OF SHEETS

- 1 COVER SHEET
- 2 INDEX OF SHEETS, HIGHWAY STANDARDS, GENERAL NOTES, COMMITMENTS, ADT AND MIX CHART
- 3-4 SUMMARY OF QUANTITIES
- 5 LOCATION MAP
- 6 TYPICAL SECTIONS
- 7-8 SCHEDULES
- 9 DETAILS
- 10 SURVEY CONTROL

HIGHWAY STANDARDS

- 000001-08 STANDARD SYMBOLS, ABBREVIATIONS AND PATTERNS
- 001006 DECIMAL OF AN INCH AND OF A FOOT
- 406201-01 MAILBOX TURNOUT
- 442201-03 CLASS C AND D PATCHES
- 701201-05 LANE CLOSURE, 2L, 2W, DAY ONLY FOR SPEEDS ≥ 45 MPH
- 701301-04 LANE CLOSURE, 2L, 2W, SHORT TIME OPERATIONS
- 701306-04 LANE CLOSURE, 2L, 2W, SLOW MOVING OPERATIONS, DAY ONLY, FOR SPEEDS ≥ 45 MPH
- 701311-03 LANE CLOSURE, 2L, 2W, MOVING OPERATIONS - DAY ONLY
- 701336-07 LANE CLOSURE, 2L, 2W, WORK AREAS IN A SERIES, FOR SPEEDS ≥ 45 MPH
- 701901-08 TRAFFIC CONTROL DEVICES
- 780001-05 TYPICAL PAVEMENT MARKINGS
- 781001-04 TYPICAL APPLICATIONS RAISED REFLECTIVE PAVEMENT MARKERS

GENERAL NOTES

1. UTILITIES KNOWN TO HAVE FACILITIES WITHIN THE PROJECT AREA:

VILLAGE OF ALBERS	WATER AND SANITARY SEWER
AMEREN ILLINOIS	GAS AND ELECTRIC
AT&T ILLINOIS	COMMUNICATIONS
CARLYLE SOUTHWEST PUBLIC WATER DISTRICT	WATER
CHARTER COMMUNICATIONS, INC.	CABLE TV
CLEARWAVE COMMUNICATIONS	COMMUNICATIONS
CLINTON COUNTY ELECTRIC COOPERATIVE, INC.	ELECTRIC
FRONTIER COMMUNICATIONS	COMMUNICATIONS
VILLAGE OF GERMANTOWN	WATER & SANITARY SEWER
WINDSTREAM KDL, INC.	COMMUNICATIONS

2. NO SURVEY WAS PERFORMED FOR THIS PROJECT AND THE PLANS WERE CREATED USING MICROFILM AND FIELD MEASUREMENTS.

3. MIX CHART

MIXTURE USE	SURFACE	PATCHING
AC/PG	PG 64-22	PG 64-22
RAP % (MAX)	SEE SPECIAL PROVISION	SEE SPECIAL PROVISION
DESIGN AIR VOIDS	4.0% @ Ndes=70	4.0% @ Ndes=70
MIX COMPOSITION (Gradation)	IL 9.5	IL 19.0
FRICITION AGG	MIXTURE "C"	MIXTURE "B"
QUALITY MGMT PROGRAM	QCP	QC/QA

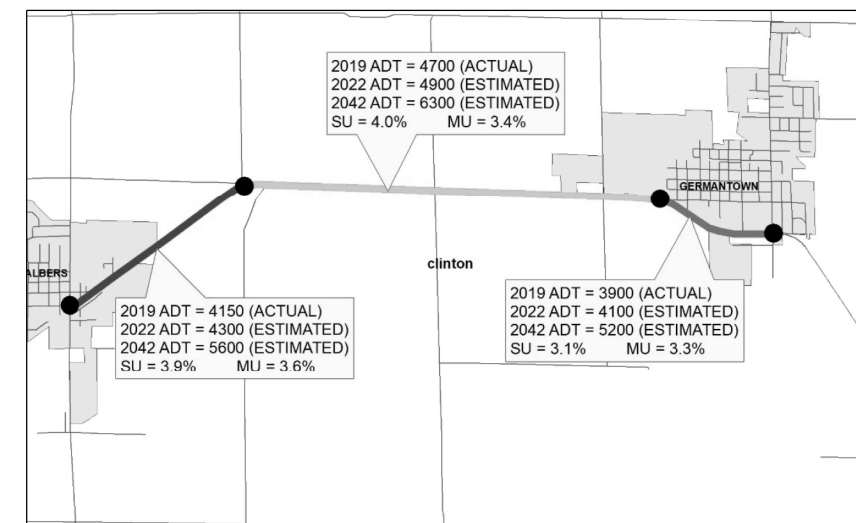
PLAN QUANTITIES FOR HOT-MIX ASPHALT SURFACE COURSE ITEMS ARE CALCULATED USING A WEIGHT OF 112 LB/SQ YD/IN.

4. ALL MILLED LANES SHALL BE RESURFACED WITH THE APPROPRIATE SURFACE COURSE PRIOR TO OPENING THE LANE TO TRAFFIC.
5. NO OVERNIGHT LANE CLOSURES WILL BE PERMITTED.

COMMITMENTS

NONE

ADT



MODEL: Default
 FILE NAME: p:\pub\banonm.dwt
 PROJECT: 0876954\CD\DATA\CAD\PROJECTS\0876954\11-11-2021\11-11-2021.dgn

USER NAME = challandeske	DESIGNED -	REVISED -
	DRAWN -	REVISED -
PLOT SCALE = 100,0000' / in.	CHECKED -	REVISED -
PLOT DATE = 8/11/2021	DATE -	REVISED -

**STATE OF ILLINOIS
DEPARTMENT OF TRANSPORTATION**

**INDEX OF SHEETS, HIGHWAY STANDARDS
GENERAL NOTES, COMMITMENTS, ADT, AND MIX CHART**

SCALE: SHEET OF SHEETS STA. TO STA.

F.A.P. RTE.	SECTION	COUNTY	TOTAL SHEETS	SHEET NO.
805	(126, 126-1)RS-3	CLINTON	10	2
CONTRACT NO. 76P54				
ILLINOIS FED. AID PROJECT				

CODE NO.	ITEM	UNIT	TOTAL QUANTITY	100% FED ROADWAY	
				0005	
				RURAL	URBAN
40600290	BITUMINOUS MATERIALS (TACK COAT)	POUND	28005	22936	5069
40604052	HOT-MIX ASPHALT SURFACE COURSE, IL-9.5, MIX "C", N70	TON	5228	4282	946
44000155	HOT-MIX ASPHALT SURFACE REMOVAL, 1 1/2"	SQ YD	67420	55217	12203
44200180	PAVEMENT PATCHING, TYPE II, 15 INCH	SQ YD	315	286	29
44200184	PAVEMENT PATCHING, TYPE III, 15 INCH	SQ YD	680	680	
44200186	PAVEMENT PATCHING, TYPE IV, 15 INCH	SQ YD	1853	1853	
48102100	AGGREGATE WEDGE SHOULDER, TYPE B	TON	145	119	26
67000400	ENGINEER'S FIELD OFFICE, TYPE A	CAL MO	6	5	1
67100100	MOBILIZATION	L SUM	1	0.75	0.25
70100450	TRAFFIC CONTROL AND PROTECTION, STANDARD 701201	L SUM	1	0.75	0.25
70100460	TRAFFIC CONTROL AND PROTECTION, STANDARD 701306	L SUM	1	0.75	0.25
70100600	TRAFFIC CONTROL AND PROTECTION, STANDARD 701336	L SUM	1	0.75	0.25
70300100	SHORT TERM PAVEMENT MARKING	FOOT	6365	4680	1685
70300150	SHORT TERM PAVEMENT MARKING REMOVAL	SQ FT	707	520	187

MODEL: Default
 FILE NAME: p:\pub\mroom.dwt
 PROJECT: I:\Projects\0876P54\CAD\Drawings\DOT Office\Drawings\0876P54\0876P54-01-500.dgn

USER NAME = challandeske	DESIGNED -	REVISED -
PLOT SCALE = 100,0000' / in.	DRAWN -	REVISED -
PLOT DATE = 8/11/2021	CHECKED -	REVISED -
	DATE -	REVISED -

**STATE OF ILLINOIS
DEPARTMENT OF TRANSPORTATION**

SUMMARY OF QUANTITIES

SCALE: SHEET OF SHEETS STA. TO STA.

F.A.P. RTE.	SECTION	COUNTY	TOTAL SHEETS	SHEET NO.
805	(126.126-1)RS-3	CLINTON	10	3
CONTRACT NO. 76P54				
ILLINOIS FED. AID PROJECT				

CODE NO.	ITEM	UNIT	TOTAL QUANTITY	100% FED ROADWAY	
				0005 RURAL	0005 URBAN
70300210	TEMPORARY PAVEMENT MARKING LETTERS AND SYMBOLS	SQ FT	122	122	
70300220	TEMPORARY PAVEMENT MARKING - LINE 4"	FOOT	34294	23905	10389
70300280	TEMPORARY PAVEMENT MARKING - LINE 24"	FOOT	72	72	
* 78000100	THERMOPLASTIC PAVEMENT MARKING - LETTERS AND SYMBOLS	SQ FT	122	122	
* 78000200	THERMOPLASTIC PAVEMENT MARKING - LINE 4"	FOOT	34294	23905	10389
* 78000650	THERMOPLASTIC PAVEMENT MARKING - LINE 24"	FOOT	72	72	
* 78100100	RAISED REFLECTIVE PAVEMENT MARKER	EACH	292	215	77
78300200	RAISED REFLECTIVE PAVEMENT MARKER REMOVAL	EACH	292	215	77
X7030005	TEMPORARY PAVEMENT MARKING REMOVAL	SQ FT	11590	8127	3463
Z0033700	LONGITUDINAL JOINT SEALANT	FOOT	23338	19114	4224
Z0034105	MATERIAL TRANSFER DEVICE	TON	5228	4282	946
Z0070100	SURVEY MONUMENT COVER ASSEMBLY	EACH	4	3	1
∅ Z0076600	TRAINEES	HOUR	500	500	
∅ Z0076604	TRAINEES TRAINING PROGRAM GRADUATE	HOUR	500	500	

* SPECIALTY ITEM

∅ 0042

MODEL: Default
 FILE NAME: p:\pub\mroom.dwt
 PROJECT: I:\DOT\Documents\DOT - Office\Drawings\Projects\076P54\CAD\Drawings\076P54-1-1-500.dgn

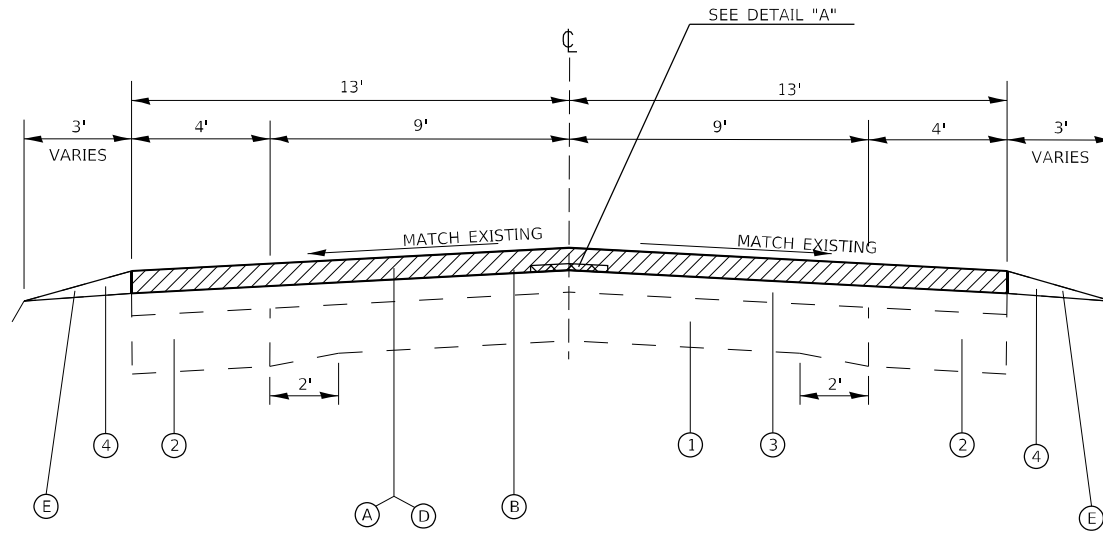
USER NAME = challandeske	DESIGNED -	REVISED -
PLOT SCALE = 100,0000 ' / in.	DRAWN -	REVISED -
PLOT DATE = 8/11/2021	CHECKED -	REVISED -
	DATE -	REVISED -

**STATE OF ILLINOIS
DEPARTMENT OF TRANSPORTATION**

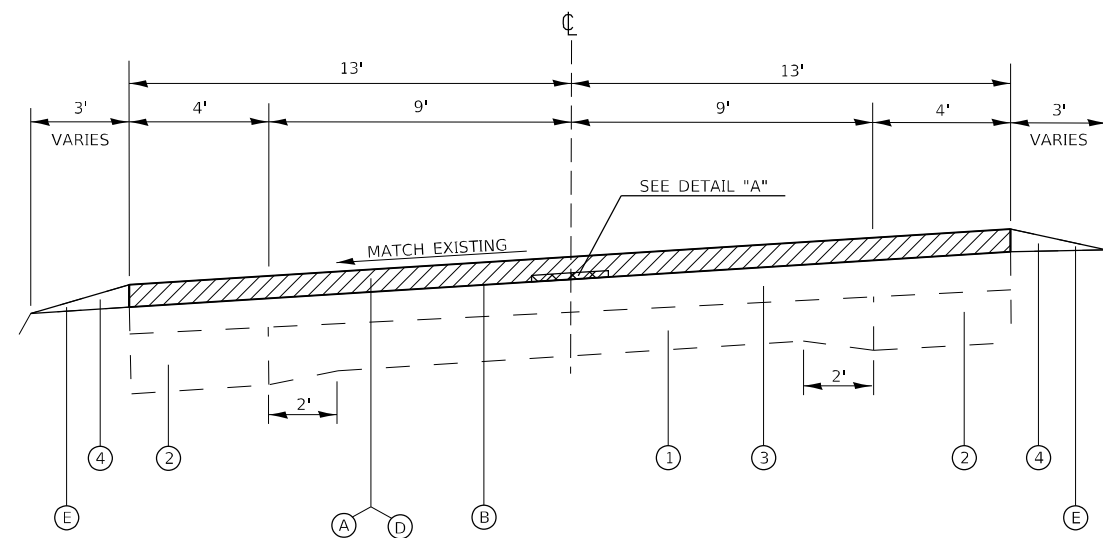
SUMMARY OF QUANTITIES

SCALE: SHEET OF SHEETS STA. TO STA.

F.A.P. RTE.	SECTION	COUNTY	TOTAL SHEETS	SHEET NO.
805	(126.126-1)RS-3	CLINTON	10	4
			CONTRACT NO. 76P54	
ILLINOIS FED. AID PROJECT				

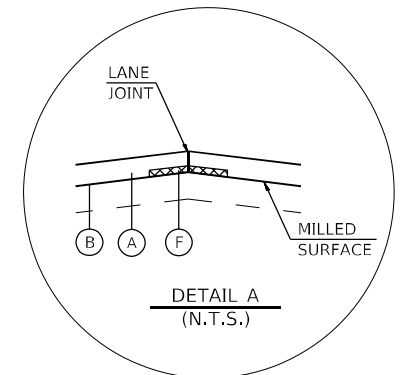


TANGENT SECTION
 MILE POINT 0.00 TO MILE POINT 4.44
 (SEE BELOW FOR SUPERELEVATED SECTIONS)



SUPERELEVATED SECTION
 MILE POINT 0.00 TO MILE POINT 0.04
 MILE POINT 1.16 TO MILE POINT 1.27
 MILE POINT 3.64 TO MILE POINT 3.82
 MILE POINT 4.01 TO MILE POINT 4.44

RAILROAD OMISSION
 MILE POINT 1.27 TO MILE POINT 1.29



**DETAIL "A" SHALL BE APPLIED ALONG THE CENTERLINE OF PAVEMENT

LEGEND

- 1 EXISTING CONCRETE PAVEMENT (9"-6½"-9")
- 2 EXISTING BASE COURSE WIDENING, 9"
- 3 EXISTING HOT-MIX ASPHALT OVERLAY (VARIES 5" TO 6")
- 4 EXISTING AGGREGATE SHOULDER, TYPE B
- A PROPOSED HOT-MIX ASPHALT SURFACE REMOVAL 1½"
- B PROPOSED BITUMINOUS MATERIALS (TACK COAT)
- C OMITTED
- D PROPOSED HOT-MIX ASPHALT SURFACE COURSE, 1½"
- E PROPOSED AGGREGATE WEDGE SHOULDER, TYPE B
- F PROPOSED LONGITUDINAL JOINT SEALANT

MODEL: Default
 FILE NAME: p:\pub\mtrmonr.dwt\illinois.gov\PIWDOT\Documents\IBDOT_Offices\District 8\Projects\0876954\ICDD\DATA\CAD\Faces\0876954.rvt-typlcal.dgn

USER NAME = challandeske	DESIGNED -	REVISED -
	DRAWN -	REVISED -
PLOT SCALE = 100,0000' / in.	CHECKED -	REVISED -
PLOT DATE = 8/11/2021	DATE -	REVISED -

**STATE OF ILLINOIS
 DEPARTMENT OF TRANSPORTATION**

TYPICAL SECTIONS

SCALE: SHEET OF SHEETS STA. TO STA.

F.A.P. RTE.	SECTION	COUNTY	TOTAL SHEETS	SHEET NO.
805	(126, 126-1)RS-3	CLINTON	10	6
CONTRACT NO. 76P54			ILLINOIS FED. AID PROJECT	

PATCHING SCHEDULE

MILE POINT	LANE	WIDTH	LENGTH	PAVEMENT	PAVEMENT	PAVEMENT
				PATCHING	PATCHING	PATCHING
				TYPE II, 15"	TYPE III, 15"	TYPE IV, 15"
				SQ YD	SQ YD	SQ YD
0.045	W	4	180			80.0
0.067	W	6	12	8.0		
0.067	E	6	12	8.0		
0.158	W	6	12	8.0		
0.192	W	12	12		16.0	
0.192	E	12	12		16.0	
0.253	W	12	15		20.0	
0.253	E	12	15		20.0	
0.286	W	12	12		16.0	
0.286	E	12	12		16.0	
0.346	W	10	12	13.3		
0.346	E	10	12	13.3		
0.397	W	12	30			40.0
0.397	E	12	15		20.0	
0.421	W	12	15		20.0	
0.589	W	12	15		20.0	
0.589	E	12	15		20.0	
0.659	E	10	12	13.3		
0.706	W	6	12	8.0		
0.706	E	6	12	8.0		
0.744	W	6	12	8.0		
0.744	E	6	12	8.0		
0.784	E	12	20			26.7
0.795	W	12	15		20.0	
0.795	E	12	15		20.0	
0.840	E	12	12		16.0	
0.881	W	12	12		16.0	
0.881	E	12	12		16.0	
0.919	W	6	50			33.3
0.953	W	6	30		20.0	
0.975	W	10	12	13.3		
0.975	E	10	12	13.3		
1.066	W	12	20			26.7
1.090	W	12	12		16.0	
1.090	E	12	12		16.0	
1.195	E	12	20			26.7
1.228	W	12	12		16.0	
1.228	E	12	12		16.0	
1.307	E	12	12		16.0	
1.323	W	6	12	8.0		
1.323	E	6	12	8.0		
1.339	E	6	20	13.3		
1.365	W	12	20			26.7
1.372	E	12	120			160.0
1.446	E	12	20			26.7
1.464	E	6	12	8.0		
1.625	W	12	20			26.7
1.644	W	12	30			40.0
1.644	E	12	30			40.0

CONT.

PATCHING SCHEDULE

MILE POINT	LANE	WIDTH	LENGTH	PAVEMENT	PAVEMENT	PAVEMENT
				PATCHING	PATCHING	PATCHING
				TYPE II, 15"	TYPE III, 15"	TYPE IV, 15"
				SQ YD	SQ YD	SQ YD
1.723	W	12	40			53.3
1.723	E	12	40			53.3
1.775	W	12	12		16.0	
1.775	E	12	12		16.0	
1.966	E	12	30			40.0
1.983	E	12	15		20.0	
2.015	W	12	15		20.0	
2.015	E	12	15		20.0	
2.030	W	6	12	8.0		
2.108	W	10	12	13.3		
2.108	E	10	12	13.3		
2.117	W	12	15		20.0	
2.117	E	12	15		20.0	
2.137	W	12	30			40.0
2.168	W	12	20			26.7
2.168	E	12	20			26.7
2.182	W	6	12	8.0		
2.211	W	10	12	13.3		
2.211	E	10	12	13.3		
2.219	W	12	20			26.7
2.219	E	12	20			26.7
2.334	W	12	30			40.0
2.334	E	12	30			40.0
2.273	W	6	12	8.0		
2.273	E	6	12	8.0		
2.281	W	6	12	8.0		
2.281	E	6	12	8.0		
2.306	W	12	100			133.3
2.310	E	12	20			26.7
2.336	W	6	12	8.0		
2.336	E	6	12	8.0		
2.374	E	12	20			26.7
2.422	W	6	12	8.0		
2.428	W	12	20			26.7
2.428	E	12	20			26.7
2.437	W	6	60			40.0
2.549	E	12	20			26.7
2.549	W	12	60			80.0
2.622	W	12	40			53.3
2.647	W	12	50			66.7
2.740	W	12	20			26.7
2.831	W	12	12		16.0	
2.831	E	12	12		16.0	
2.987	W	12	40			53.3
2.987	E	12	40			53.3
3.199	W	12	25			33.3
3.199	E	12	25			33.3
3.265	W	12	12		16.0	
3.265	E	12	12		16.0	

CONT.

MODEL: Default
 FILE NAME: p:\pub\banonm.dwt
 ILLINOIS DOT
 PROJECT: 0876954\CADD\data\CAO\patches\0876954\p15-schedule.dgn

USER NAME = challandeske	DESIGNED -	REVISED -
	DRAWN -	REVISED -
PLOT SCALE = 100,0000' / in.	CHECKED -	REVISED -
PLOT DATE = 8/11/2021	DATE -	REVISED -

**STATE OF ILLINOIS
DEPARTMENT OF TRANSPORTATION**

SCHEDULES

SCALE: SHEET OF SHEETS STA. TO STA.

F.A.P. RTE.	SECTION	COUNTY	TOTAL SHEETS	SHEET NO.
805	(126.126-1)RS-3	CLINTON	10	7
CONTRACT NO. 76P54				
ILLINOIS FED. AID PROJECT				

PATCHING SCHEDULE

MILE POINT	LANE	WIDTH	LENGTH	PAVEMENT PATCHING	PAVEMENT PATCHING	PAVEMENT PATCHING
				TYPE II, 15"	TYPE III, 15"	TYPE IV, 15"
				SQ YD	SQ YD	SQ YD
3.353	E	12	25			33.3
3.431	W	12	15		20.0	
3.431	E	12	15		20.0	
3.612	E	12	10	13.3		
3.646	W	12	15		20.0	
3.646	E	12	15		20.0	
3.707	W	6	12	8.0		
3.707	E	6	12	8.0		
3.795	W	12	12		16.0	
3.795	E	12	12		16.0	
3.805	W	12	60			80.0
4.047	W	12	80			106.7
TOTAL				315	680	1853

RESURFACING SCHEDULE

MILE POINT	TO	MILE POINT	HOT-MIX ASPHALT SURFACE	BITUMINOUS MATERIALS (TACK COAT)	HOT-MIX ASPHALT SURFACE CSE 1L-9.5 MIX "C", N70	AGGREGATE WEDGE SHOULDER, TYPE B	LONGITUDINAL JOINT SEALANT	
			REMOVAL 1 1/2"	POUND	TON	TON	FOOT	
0.00	TO	0.04	610.13	253.44	47.31	1.31	211.20	
0.04	TO	1.16	17083.73	7096.32	1324.65	36.80	5913.60	
1.16	TO	1.27	1677.87	696.96	130.10	3.61	580.80	
1.27	TO	1.29	RR OMISSION					
1.29	TO	3.27	30201.60	12545.28	2341.79	65.05	10454.40	
3.27	TO	3.64	5643.73	2344.32	437.61	12.16	1953.60	
3.64	TO	3.82	2745.60	1140.48	212.89	5.91	950.40	
3.82	TO	4.01	2898.13	1203.84	224.72	6.24	1003.20	
4.01	TO	4.18	2593.07	1077.12	201.06	5.59	897.60	
4.18	TO	4.44	3965.87	1647.36	307.51	8.54	1372.80	
TOTAL			67420	28005	5228	145	23338	

PAVEMENT MARKING

MILE POINT	TO	MILE POINT	NOTES	THERMOPLASTIC PAVEMENT MARKING / TEMPORARY PAVEMENT MARKING		TEMPORARY PAVEMENT MARKING	SHORT TERM PAVEMENT MARKING	SHORT TERM PAVEMENT MARKING	RAISED REFLECTIVE PAVEMENT MARKER	RAISED REFLECTIVE PAVEMENT MARKER	
				LINE 4"	LINE 24"	REMOVAL	MARKING	REMOVAL	PAVEMENT MARKER	REMOVAL	
				YELLOW	WHITE	LETTERS AND SYMBOLS	REMOVAL	MARKING	REMOVAL	REMOVAL	
				FOOT	FOOT	SQ FT	SQ FT	FOOT	SQ FT	EACH	EACH
0.00	TO	0.14	NO PASSING WB	924	739.2		554.4	202	22.4	9	9
0.14	TO	1.14	PASSING	1320	5280		2200	1440	160	66	66
1.14	TO	1.23	NO PASSING EB	594	475.2		356.4	130	14.4	6	6
1.23	TO	1.27	NO PASSING	422.4	211.2	36	290.4	58	6.4	3	3
1.27	TO	1.29	OMISSION								
1.29	TO	1.31	NO PASSING	211.2	105.6	36	184.8	29	3.2	1	1
1.31	TO	1.44	NO PASSING WB	858	686.4		514.8	187	20.8	9	9
1.44	TO	3.27	PASSING	2415.6	9662.4		4026	2635	292.8	121	121
3.27		3.95	PASSING	897.6	3590.4		1496	979	108.8	45	45
3.95	TO	4.06	NO PASSING EB	726	580.8		435.6	158	17.6	7	7
4.06		4.08	NO PASSING	211.2	105.6		105.6	29	3.2	1	1
4.08		4.29	NO PASSING WB	1386	1108.8		831.6	302	33.6	14	14
4.29	TO	4.44	NO PASSING EB	990	792		594	216	24	10	10
TOTAL				10956	23338	72	11590	6365	707	292	292
				34294							

* 24" LINE AND LETTERS AND SYMBOLS ARE FOR RAILROAD MARKING. SEE STANDARD 780001 FOR DETAILS

MODEL: Default
 FILE: Marking_Plan.dwg
 PROJECT: 126.126-1)RS-3
 SHEET: 10 of 10
 DATE: 8/11/2021

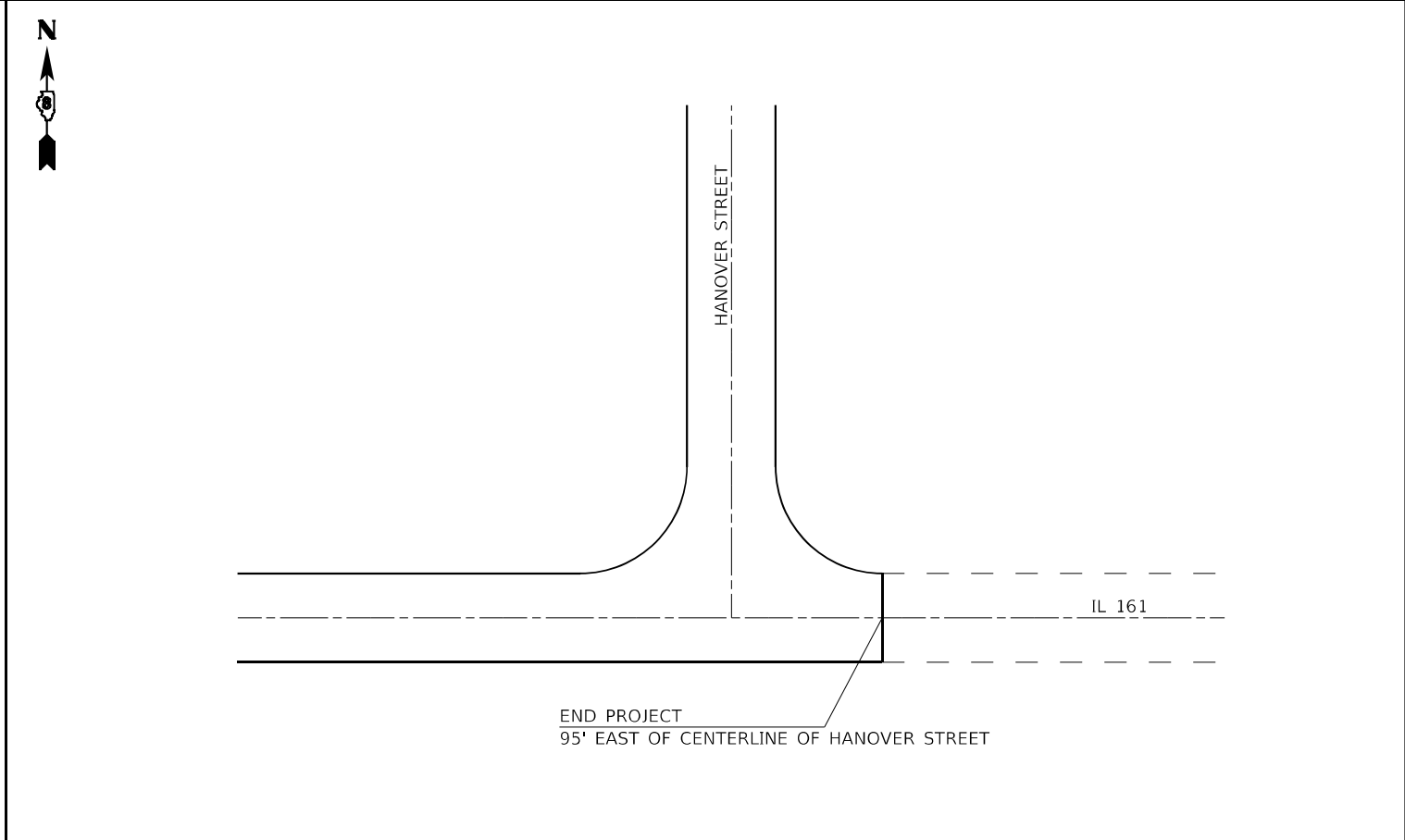
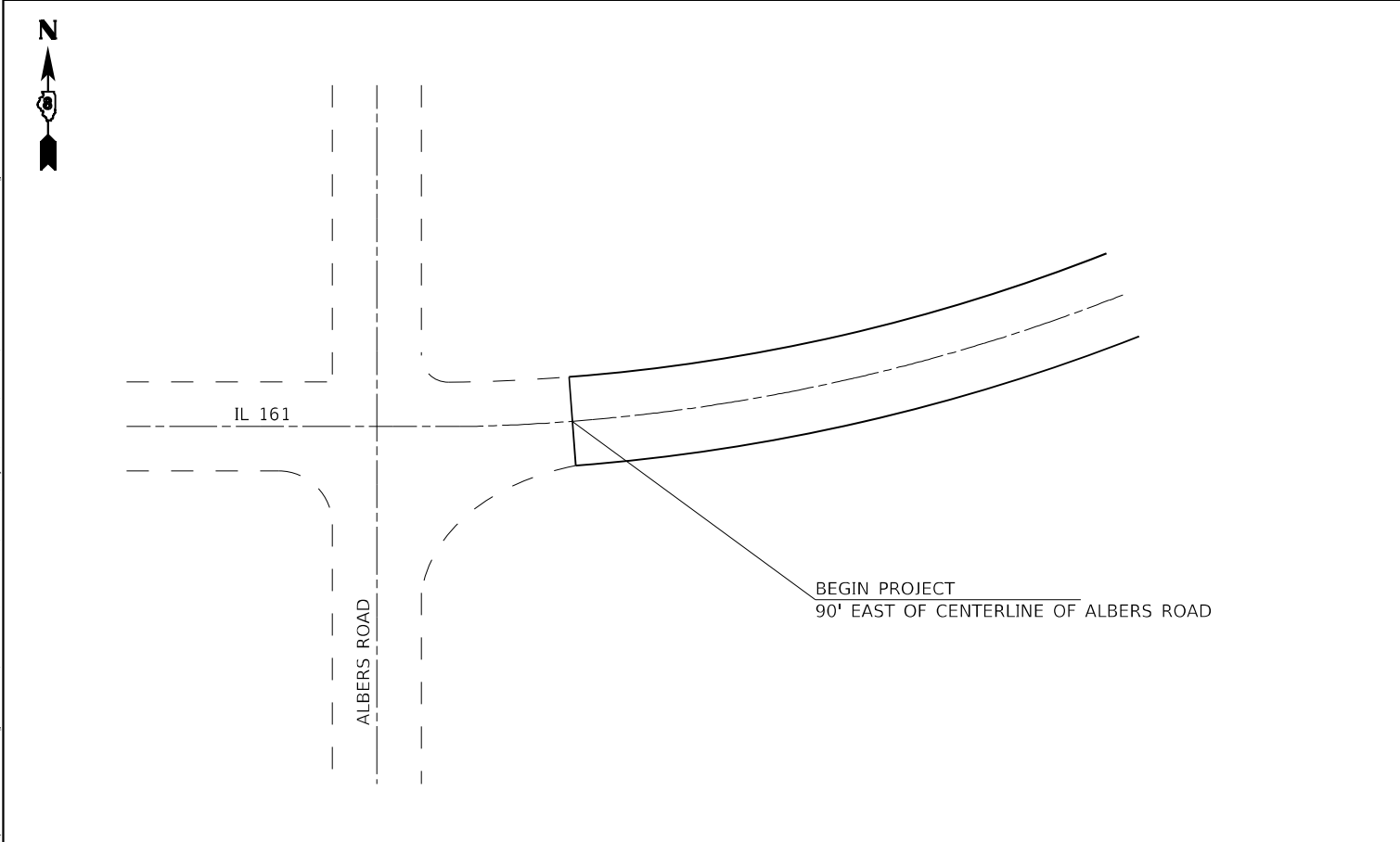
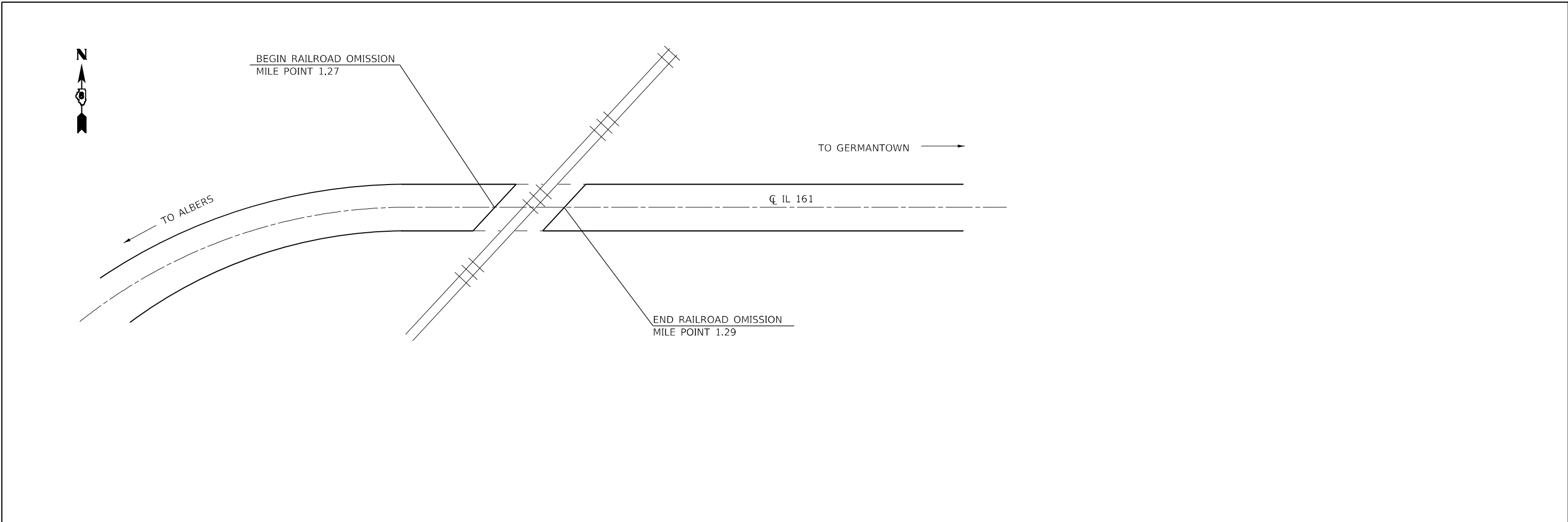
USER NAME = challeske	DESIGNED -	REVISED -
PLOT SCALE = 100.0000' / in.	DRAWN -	REVISED -
PLOT DATE = 8/11/2021	CHECKED -	REVISED -
	DATE -	REVISED -

**STATE OF ILLINOIS
DEPARTMENT OF TRANSPORTATION**

SCHEDULES

SCALE: SHEET OF SHEETS STA. TO STA.

F.A.P. RTE.	SECTION	COUNTY	TOTAL SHEETS	SHEET NO.
805	(126.126-1)RS-3	CLINTON	10	8
ILLINOIS FED. AID PROJECT			CONTRACT NO. 76P54	



MODEL: Default
 FILE NAME: p:\pub\harrington.dwg
 PROJECT: D:\Projects\DOT\Office\District 8\Projects\DOT\76P54\CADD\DATA\CAD\Project\DOT\76P54\crt-deta11.dwg

USER NAME = challandeske	DESIGNED -	REVISED -
	DRAWN -	REVISED -
PLOT SCALE = 100,0000' / in.	CHECKED -	REVISED -
PLOT DATE = 8/11/2021	DATE -	REVISED -

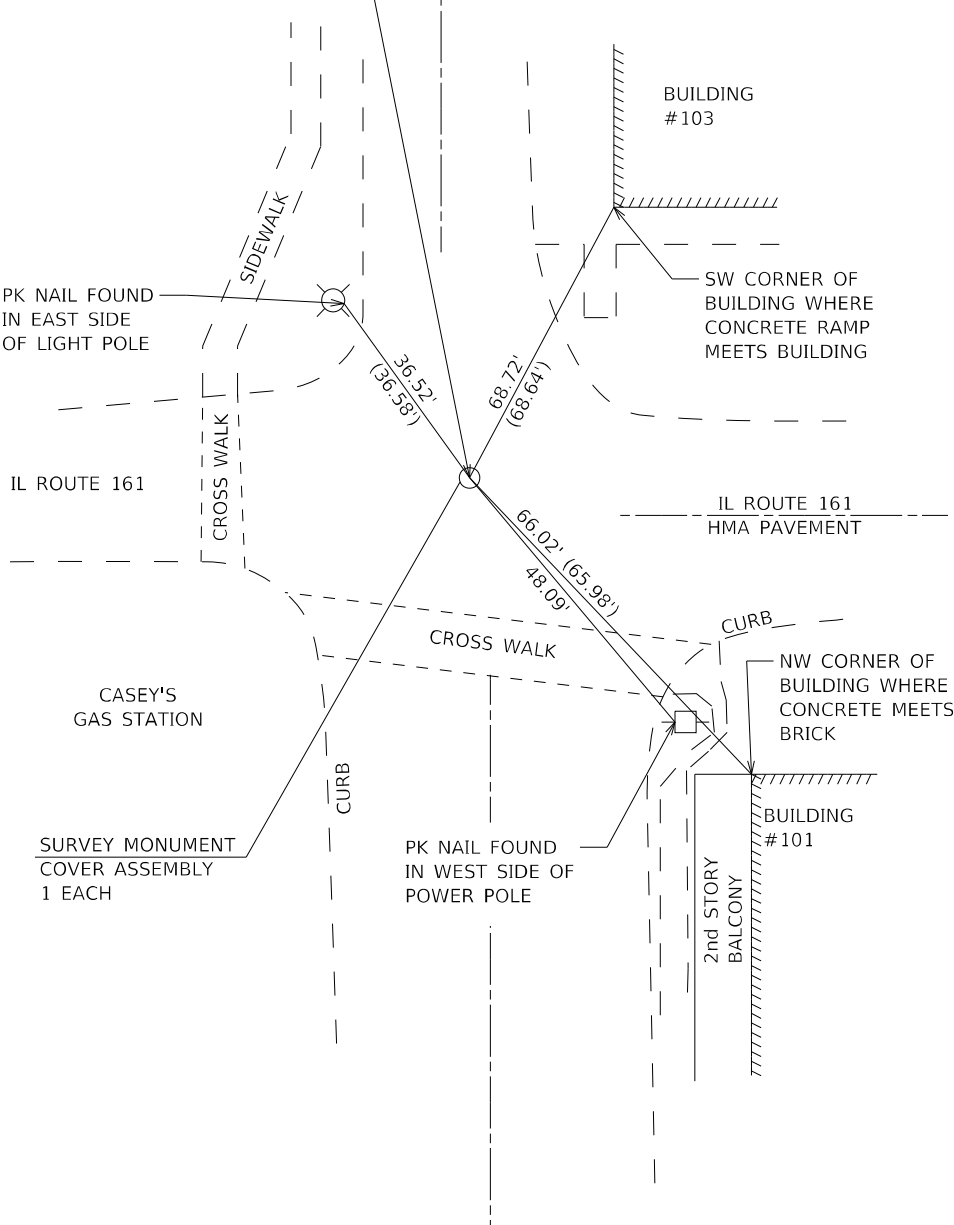
STATE OF ILLINOIS
DEPARTMENT OF TRANSPORTATION

DETAILS			
SCALE:	SHEET	OF SHEETS	STA. TO STA.

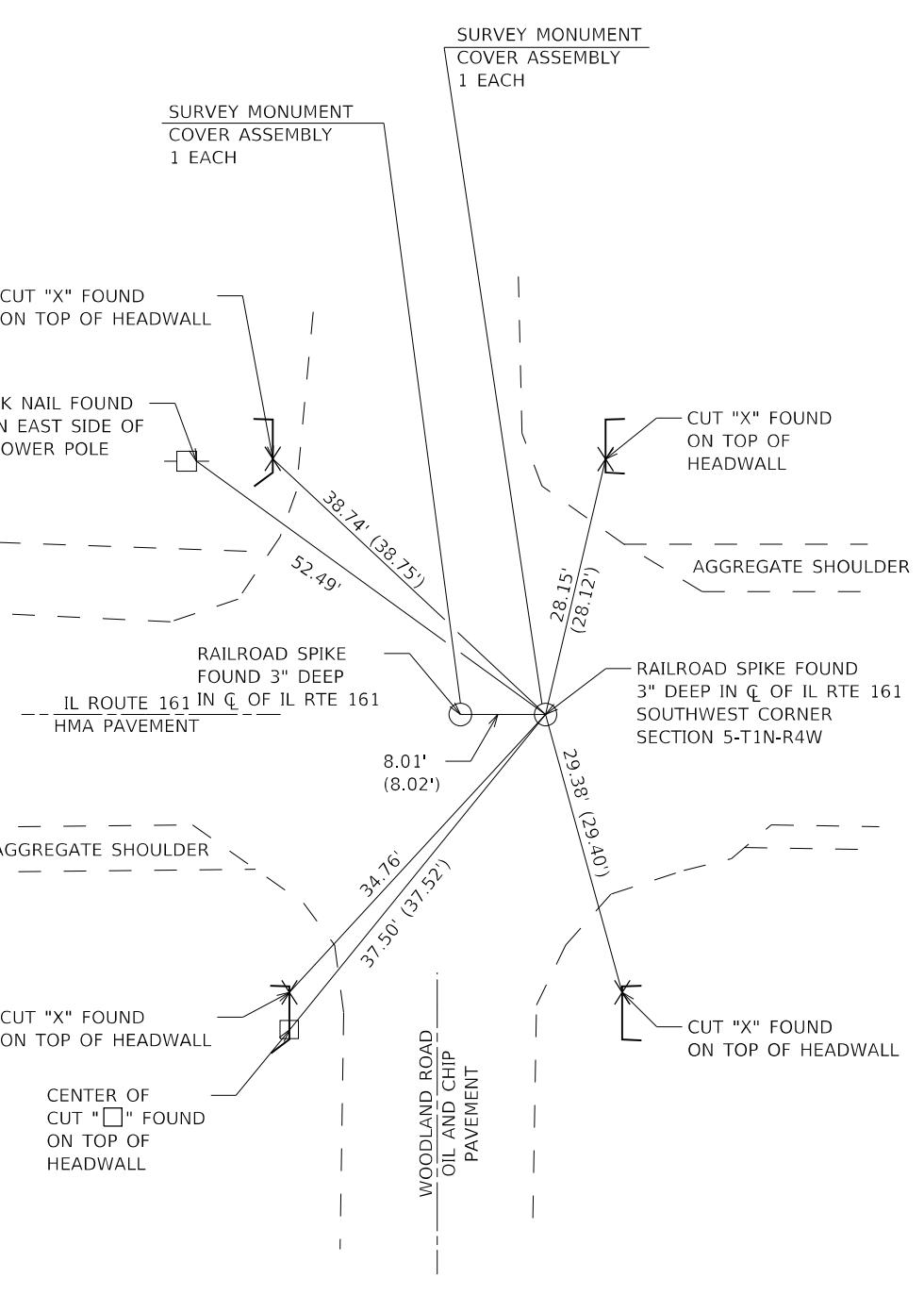
F.A.P. RTE.	SECTION	COUNTY	TOTAL SHEETS	SHEET NO.
805	(126.126-1)RS-3	CLINTON	10	9
CONTRACT NO. 76P54				
ILLINOIS FED. AID PROJECT				



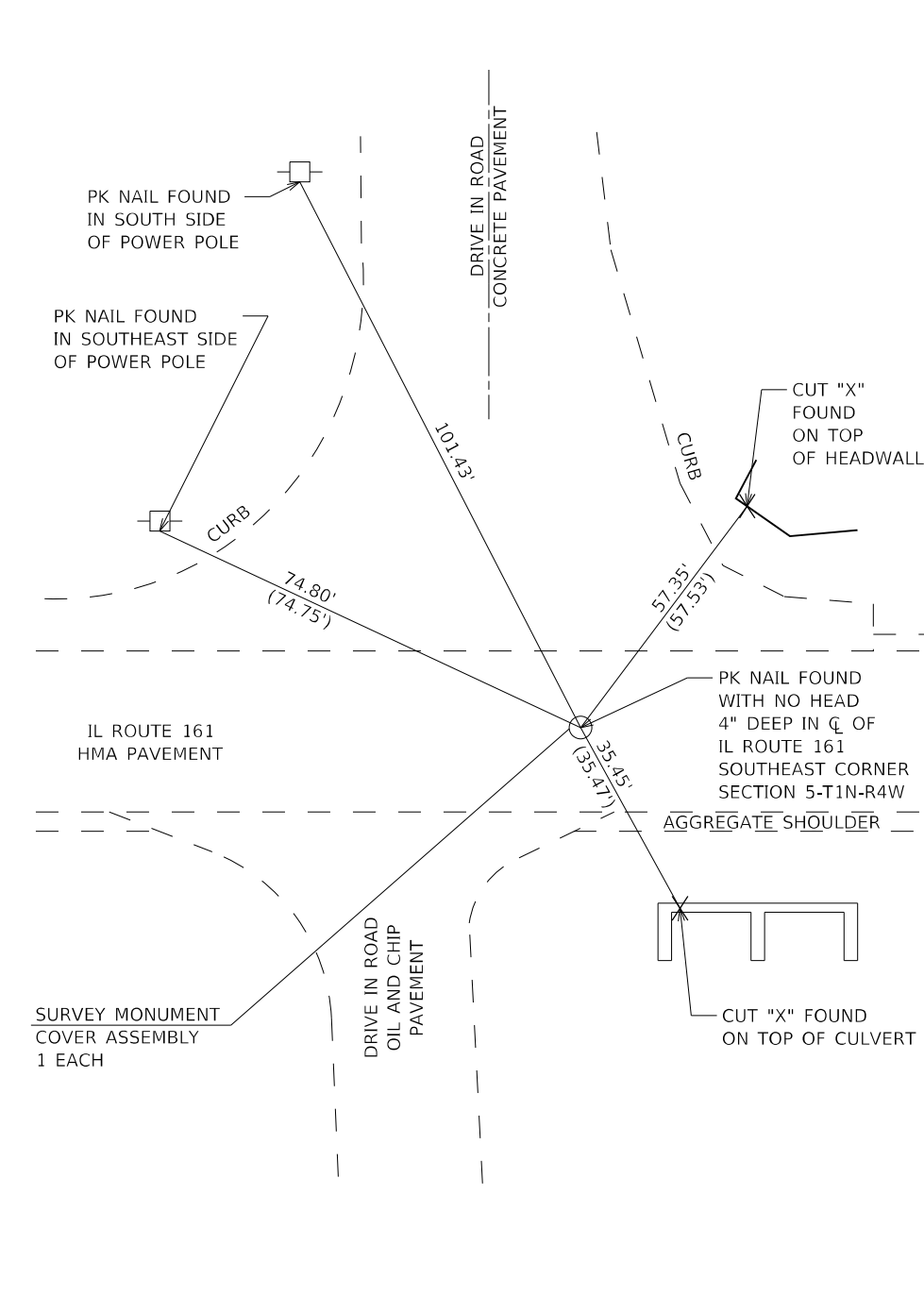
1" IRON PIN FOUND 1" BELOW ROAD SURFACE NEAR CENTERLINE OF IL ROUTE 161 NE CORNER SE 1/4, SE 1/4 SEC. 11-T1N-R5W



ALL MEASUREMENTS SHOWN HEREON ARE HORIZONTAL DISTANCES.



ALL MEASUREMENTS SHOWN HEREON ARE HORIZONTAL DISTANCES.



ALL MEASUREMENTS SHOWN HEREON ARE HORIZONTAL DISTANCES.

MODEL: Default
 FILE NAME: p:\data\room.dwg
 PROJECT: 076P54\CADD\DATA\CADD\PROJECTS\076P54-CH-DETAIL.dwg
 PROJECT: 076P54\CADD\DATA\CADD\PROJECTS\076P54-CH-DETAIL.dwg

USER NAME = challandeske	DESIGNED -	REVISED -
	DRAWN -	REVISED -
PLOT SCALE = 100,0000' / in.	CHECKED -	REVISED -
PLOT DATE = 8/11/2021	DATE -	REVISED -

**STATE OF ILLINOIS
DEPARTMENT OF TRANSPORTATION**

**SURVEY CONTROL
3 POINT TIES**

SCALE: SHEET OF SHEETS STA. TO STA.

F.A.P. RTE.	SECTION	COUNTY	TOTAL SHEETS	SHEET NO.
805	(126.126-1)RS-3	CLINTON	10	10
CONTRACT NO. 76P54				
ILLINOIS FED. AID PROJECT				