

STATE OF ILLINOIS  
DEPARTMENT OF TRANSPORTATION

FAI RTE.	SECTION	COUNTY	TOTAL SHEETS	SHEET NO.
255	67-(1,2,3)PP-1, 82-(6,7,8)PP-1	MONROE ST. CLAIR	8	1
		ILLINOIS	CONTRACT NO. 76P89	

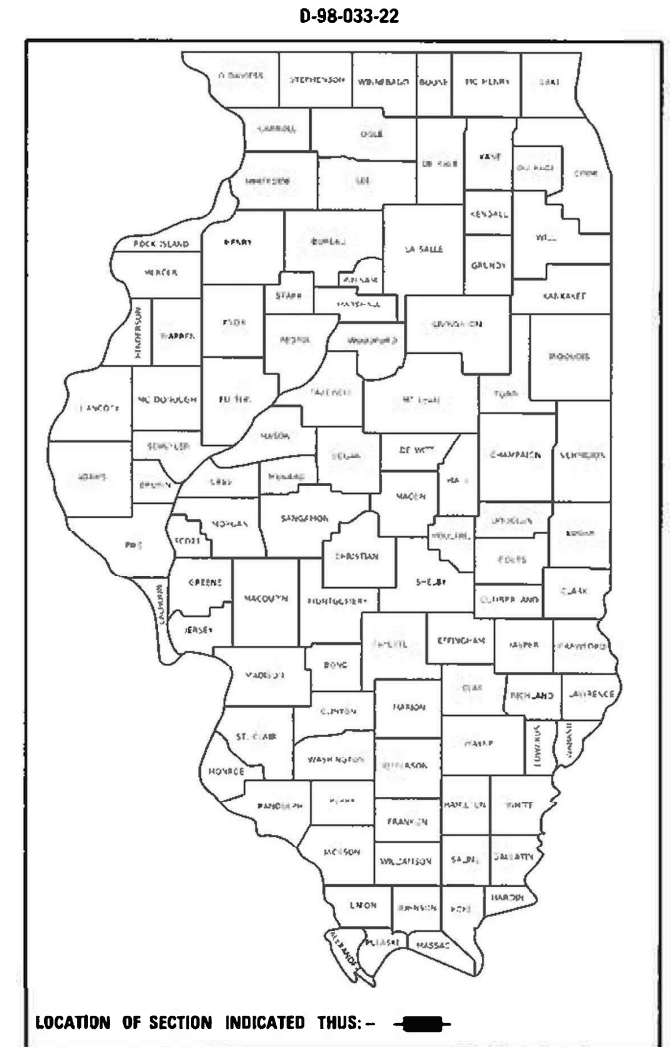
FOR INDEX OF SHEETS, SEE SHEET NO. 2

# PROPOSED HIGHWAY PLANS

FAI ROUTE 255 (I-255)  
SECTION 67-(1,2,3)PP-1, 82-(6,7,8)PP-1  
PATCHING  
MONROE & ST. CLAIR COUNTIES

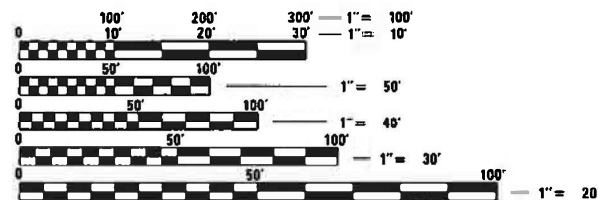
TRAFFIC DATA	
LOCATION	I-255
2021 ADT	56400 (ACTUAL)
2042 ADT	69500 (ESTIMATED)
MU%	13.9
SU%	2.8

C-98-062-22



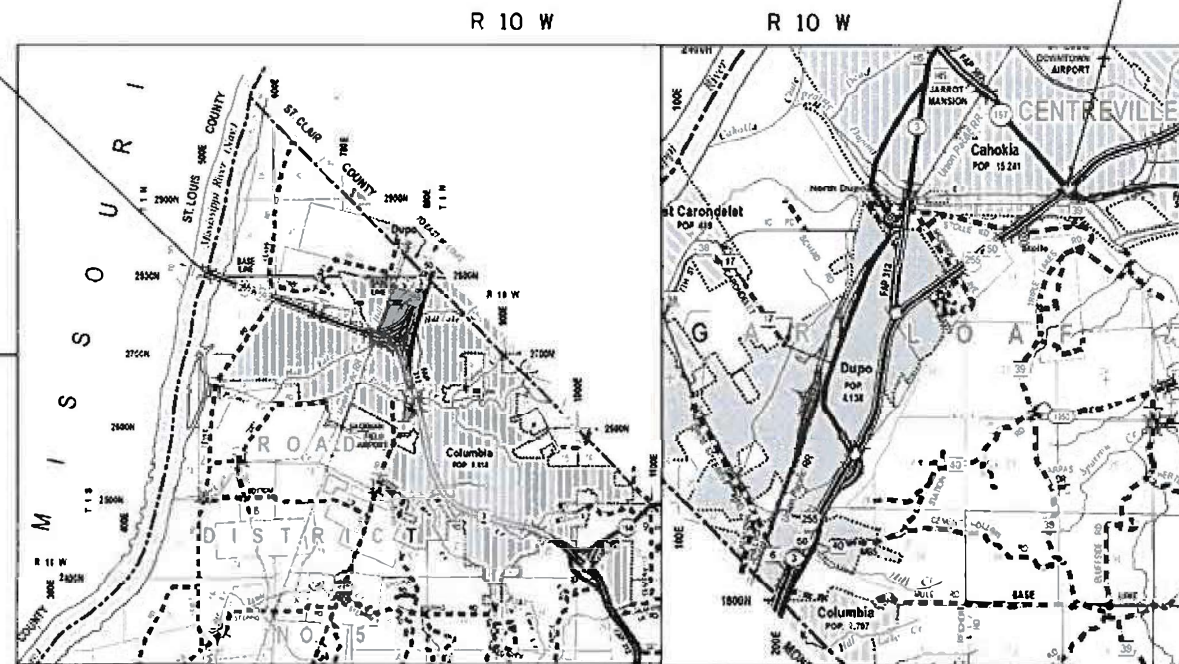
END PROJECT  
M.M. 13.43  
LAT: 38.55048°N  
LONG: -90.16194°W

BEGIN PROJECT  
M.M. 4.2  
LAT: 38.48389°N  
LONG: --90.26639°W



FULL SIZE PLANS HAVE BEEN PREPARED USING STANDARD ENGINEERING SCALES. REDUCED SIZED PLANS WILL NOT CONFORM TO STANDARD SCALES. IN MAKING MEASUREMENTS ON REDUCED PLANS, THE ABOVE SCALES MAY BE USED.

J.U.I.E.  
JOINT UTILITY LOCATION INFORMATION FOR EXCAVATORS  
1-800-892-0123  
OR 811



NOT TO SCALE

PROJECT ENGINEER: BILLIE OWEN (618) 346-3209  
PROJECT DESIGNER: THOMAS JEFFERSON (618) 346-3412

GROSS LENGTH = 48734.4 FT. = 9.23 MILE  
NET LENGTH = 48734.4 FT. = 9.23 MILE

CONTRACT NO. 76P89

STATE OF ILLINOIS  
DEPARTMENT OF TRANSPORTATION

SUBMITTED Aug. 13 2021  
Keith Roberts  
REGIONAL ENGINEER

October 1 2021  
[Signature]  
ENGINEER OF DESIGN AND ENVIRONMENT

October 21 2021  
Stephen McFarrin  
DIRECTOR OF HIGHWAYS PROJECT IMPLEMENTATION

PRINTED BY THE AUTHORITY  
OF THE STATE OF ILLINOIS

## INDEX OF SHEETS

- 1 COVER SHEET
- 2 INDEX OF SHEETS, HIGHWAY STANDARDS, GENERAL NOTES, AND COMMITMENTS
- 3 SUMMARY QUANTITIES
- 4 TYPICAL SECTIONS
- 5 PEAK HOUR SCHEDULE
- 6 CHANGEABLE MESSAGE SIGN DETAIL
- 7-8 CLASS A PATCHING (SPECIAL)

## STANDARDS

- |           |  |
|-----------|--|
| 000001-08 | STANDARD SYMBOLS, ABBREVIATIONS AND PATTERNS                               |
| 001001-02 | AREAS OF REINFORCEMENT BARS  |
| 001006    | DECIMAL OF AN INCH AND OF A FOOT   |
| 442001-04 | CLASS A PATCHES  |
| 701400-10 | APPROACH TO LANE CLOSURE, FREEWAY/EXPRESSWAY                               |
| 701401-12 | LANE CLOSURE FREEWAY/EXPRESSWAY  |
| 701411-09 | LANE CLOSURE, MULTILANE, AT ENTRANCE OR EXIT RAMP, FOR SPEEDS = 45MPH      |
| 701426-09 | LANE CLOSURE, MULTILANE, INTERMITTENT OR MOVING OPER., FOR SPEEDS = 45 MPH |
| 701428-01 | TRAFFIC CONTROL SETUP AND REMOVAL FREEWAY/EXPRESSWAY                       |
| 701446-11 | TWO LANE CLOSURE FREEWAY/EXPRESSWAY  |
| 701901-08 | TRAFFIC CONTROL DEVICES  |
| 780001-05 | TYPICAL PAVEMENT MARKINGS  |
| 781001-04 | TYPICAL APPLICATION OF RAISED REFLECTIVE PAVEMENT MARKERS                  |

## GENERAL NOTES

1. UTILITIES KNOWN TO HAVE FACILITIES WITHIN THE PROJECT AREA:

UTILITY	ABOVE GROUND	BELOW GROUND
ADB COMPANIES (COMMUNICATIONS)	X	X
AMEREN ILLINOIS (GAS & ELECTRIC)	X	X
BLUEBIRD NETWORK (COMMUNICATIONS)	X	X
BUCKEYE PARTNERS L.P. - WOOD RIVER PIPELINE (PIPELINES)		X
VILLAGE OF CAHOKIA (WATER & SANITARY SEWER)		X
CITY OF CENTREVILLE (WATER & SANITARY SEWER)		X
CHARTER COMMUNICATIONS, INC. (CABLE TV)	X	X
CLEARWAVE COMMUNICATIONS (COMMUNICATIONS)	X	X
CENTRAL MANAGEMENT SERVICES (COMMUNICATIONS)		X
CITY OF COLUMBIA (WATER & SANITARY SEWER)		X
COMMONFIELDS OF CAHOKIA PUBLIC WATER DISTRICT (WATER & SANITARY SEWER)		X
CONSOLIDATED COMMUNICATIONS (COMMUNICATIONS)	X	X
VILLAGE OF DUPO (WATER & SANITARY SEWER)		X
VILLAGE OF DUPO (GAS)		X
ENABLE MIDSTREAM PARTNRS (GAS)		X
HARRISONVILLE TELEPHONE COMPANY (COMMUNICATIONS)	X	X
ILLINOIS AMERICAN WATER COMPANY (WATER)		X
LEVEL 3 COMMUNICATIONS, LLC (COMMUNICATIONS)	X	X
VERIZON BUSINESS (COMMUNICATIONS)	X	X
MEDIACOM (CABLE TV)	X	X
METRO EAST SANITARY DISTRICT (WATER & SANITARY SEWER)		X
PARTA NETWORKS LLC (COMMUNICATIONS)	X	X
PRARIE DU PONT PUBLIC WATER DISTRICT (WATER)		X
SOUTHWESTERN ELECTRIC COOPERATIVE, INC. (ELECTRIC)	X	X
SUGAR LOAF TOWNSHIP SEWER SYSTEM (SANITARY)		X
WINDSTREAM KDL, INC. (COMMUNICATIONS)	X	X
ZAYO GROUP LLC (COMMUNICATIONS)	X	X

## GENERAL NOTES

1. NO SURVEY WAS PERFORMED FOR THIS PROJECT AND THE PLANS WERE CREATED USING MICROFILM AND FIELD MEASUREMENTS
2. THE RESIDENT ENGINEER SHALL VERIFY THE EXISTENCE OF HIGHWAY LIGHTING AND/OR INTELLIGENT TRANSPORTATION SYSTEMS (I.T.S.) UTILITIES WITHIN THE PROJECT LIMITS. IF HIGHWAY LIGHTING AND/OR I.T.S. EXISTS WITHIN THE PROJECT LIMITS, AND IF THESE ITEMS REQUIRE LOCATING, THE CONTRACTOR SHALL BE DIRECTED TO DO SO ACCORDING TO SECTION 803 OF THE STANDARD SPECIFICATIONS. THIS WORK SHALL BE PAID FOR ACCORDING TO ARTICLE 109.04 OF THE STANDARD SPECIFICATIONS.
3. THE DEPARTMENT STRONGLY ENCOURAGES THE PRIME CONTRACTOR AND THEIR APPROVED SUB-CONTRACTORS TO HIRE MINORITY, WOMEN AND DISADVANTAGED INDIVIDUALS FROM ITS FEDERALLY FUNDED HIGHWAY CONSTRUCTION CAREERS TRAINING PROGRAM (HCCTP) TO HELP MEET WORKFORCE AND TRAINEE GOALS. THIS PROGRAM IS TRAINING MINORITIES, WOMEN AND DISADVANTAGED INDIVIDUALS IN HIGHWAY CONSTRUCTION-RELATED SKILLS, E.G., MATH FOR THE TRADES, JOB READINESS, TECHNICAL SKILLS COURSEWORK (CARPENTRY, CONCRETE FLATWORK, BLUEPRINT READING, SITE PLANS, SITE WORK, TOOLS USE, ETC.) AND OSHA 10 HOUR CERTIFICATION, TO PREPARE THEM FOR A CAREER IN THE HIGHWAY CONSTRUCTION TRADES. GRADUATES ARE WELL-TRAINED AND READY TO BECOME PRODUCTIVE ENTRY-LEVEL CONSTRUCTION WORKERS. CONTACT THE DISTRICT 8 EEO OFFICE AT 618-346-3360 AND/OR THE HCCTP COORDINATOR AT 618-874-6528 TO LEARN MORE ABOUT THE PROGRAM AND FOR ASSISTANCE IN MEETING WORKFORCE AND TRAINEE GOALS.
4. PRIOR TO PATCHING, A PATCHING SURVEY SHALL BE PERFORMED TO DETERMINE PRIORITY PATCHING LOCATIONS. THE PATCHING SURVEY SHALL BE COORDINATED WITH THE BUREAU OF OPERATIONS FIELD ENGINEER TIM PRICE.
5. FOUR ADDITIONAL CHANGEABLE MESSAGE SIGNS SHALL BE REQUIRED FOR THIS PROJECT. THEY SHALL BE PLACED 2 WEEKS PRIOR TO ANY LANE CLOSURES AND SHALL REMAIN UP FOR THE DURATION OF THE PROJECT. SEE THE CHANGEABLE MESSAGE SIGN DETAIL IN THE PLANS FOR APPROXIMATE LOCATIONS. EXACT LOCATIONS SHALL BE AT THE DIRECTION OF THE ENGINEER.

## COMMITMENTS

NONE

REV. - MS

REV-SEP

MODEL: 41001.DWG  
FILE: NAME: p:\11001\paw\benitez\com\p11001\Documents\DOT\_Offices\District\_8\Projects\0876899\CADD\Drawn\CA05\tees\0876899\_sht-2.dwg

USER NAME = jeffersons	DESIGNED - _____	REVISED - _____	<b>STATE OF ILLINOIS DEPARTMENT OF TRANSPORTATION</b>	<b>INDEX OF SHEETS, STANDARDS, GENERAL NOTES COMMITMENTS</b>	F.A.I. RTE.	SECTION	COUNTY	TOTAL SHEETS	SHEET NO.	
	DRAWN - _____	REVISED - _____			255	67-(1,2,3)PP-1, 82-(6,7,8)PP-1	MONROE, ST. CLAIR	8	2	
PLOT SCALE = 100.0896' / in.	CHECKED - _____	REVISED - _____			CONTRACT NO. 76P89					
PLOT DATE = 8/17/2021	DATE - _____	REVISED - _____			(ILLINOIS) FED. AID PROJECT					

CODE NO.	ITEM	UNIT	TOTAL QUANTITY	CONSTRUCTION CODE	
				100% STATE MONROE	100% STATE ST. CLAIR
				ROADWAY 0006	ROADWAY 0006
				URBAN	URBAN
44213000	PATCHING REINFORCEMENT	SQ YD	950	333	617
44213200	SAW CUTS	FOOT	6500	2275	4225
44213204	TIE BARS 3/4"	EACH	75	27	48
67100100	MOBILIZATION	L SUM	1	0.35	0.65
70100420	TRAFFIC CONTROL AND PROTECTION, STANDARD 701411	EACH	10	4	6
70100800	TRAFFIC CONTROL AND PROTECTION, STANDARD 701401	L SUM	1	0.35	0.65
70100815	TRAFFIC CONTROL AND PROTECTION, STANDARD 701446	L SUM	1	0.35	0.65
70107025	CHANGEABLE MESSAGE SIGN	CAL DA	280	98	182
70200100	NIGHTTIME WORK ZONE LIGHTING	L SUM	1	0.35	0.65
70300100	SHORT TERM PAVEMENT MARKING	FOOT	50	18	32
70300150	SHORT TERM PAVEMENT MARKING REMOVAL	SQ FT	17	6	11
70300240	TEMPORARY PAVEMENT MARKING - LINE 6"	FOOT	1500	525	975
* 78001130	PAINT PAVEMENT MARKING - LINE 6"	FOOT	1500	525	975
* 78100100	RAISED REFLECTIVE PAVEMENT MARKER	EACH	50	18	32

CODE NO.	ITEM	UNIT	TOTAL QUANTITY	CONSTRUCTION CODE	
				100% STATE MONROE	100% STATE ST. CLAIR
				ROADWAY 0006	ROADWAY 0006
				URBAN	URBAN
X4420543	CLASS A PATCHES, TYPE I, 9 INCH (SPECIAL)	SQ YD	150	53	97
X4420545	CLASS A PATCHES, TYPE II, 9 INCH (SPECIAL)	SQ YD	600	210	390
X4420547	CLASS A PATCHES, TYPE III, 9 INCH (SPECIAL)	SQ YD	260	91	169
X4420549	CLASS A PATCHES, TYPE IV, 9 INCH (SPECIAL)	SQ YD	300	105	195
X7030005	TEMPORARY PAVEMENT MARKING REMOVAL	SQ FT	750	263	487

\* SPECIALTY ITEM

MODEL: \$MODELNAME\$ FILE NAME: dw:\illinois-ow-bentley.com\pwwdott\Documents\DOT\_Offices\District\_8\Projects\DR7699\CAD\Drawings\Drawings\DR7699-shl.txd

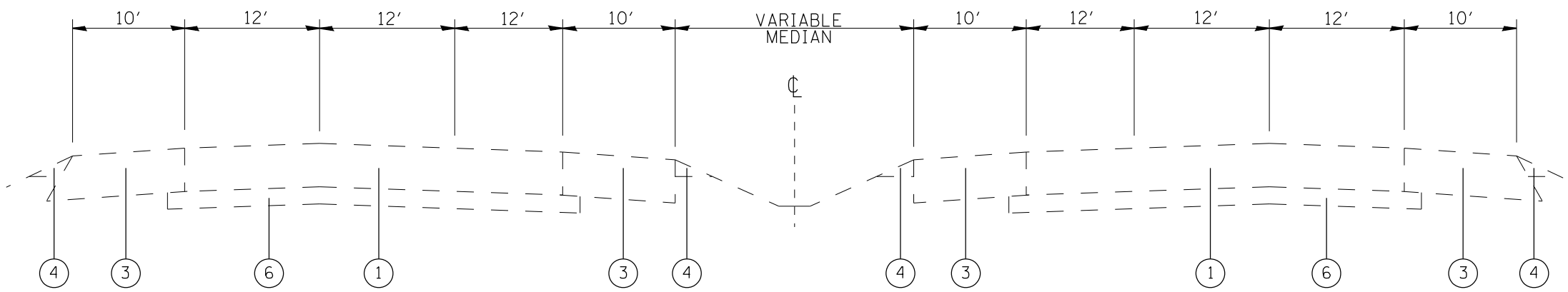
USER NAME = jeffersonts	DESIGNED - _____	REVISED - _____
DRAWN - _____	REVISION - _____	
PLOT SCALE = 99.8067' / in.	CHECKED - _____	REVISED - _____
PLOT DATE = 8/19/2021	DATE - _____	REVISED - _____

**STATE OF ILLINOIS  
DEPARTMENT OF TRANSPORTATION**

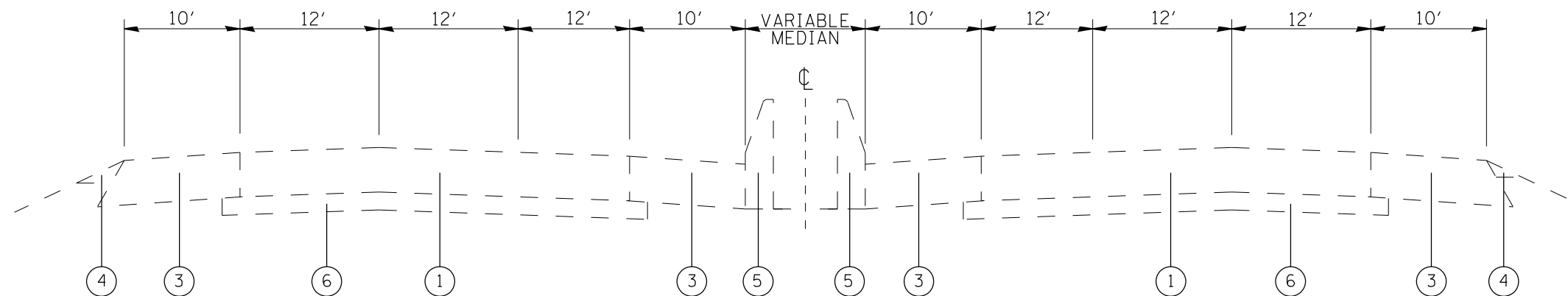
**SUMMARY OF QUANTITIES**

SCALE: \_\_\_\_\_ SHEET \_\_\_ OF \_\_\_ SHEETS STA. \_\_\_\_\_ TO STA. \_\_\_\_\_

F.A.I RTE.	SECTION	COUNTY	TOTAL SHEETS	SHEET NO.
255	67-(1,2,3)PP-1, 82-(6,7,8)PP-1	MONROE, ST. CLAIR	8	3
ILLINOIS FED. AID PROJECT			CONTRACT NO. 76P89	



**FAI 255**  
M.M. 4.20 to M.M. 10.50



**FAI 255**  
M.M. 10.50 to M.M. 13.34

**LEGEND**

- ① EXISTING C.R.P.C.C. PAVEMENT 9"
- ② EXISTING P.C.C. PAVEMENT 10"
- ③ EXISTING BITUMINOUS SHOULDERS 9"
- ④ EXISTING AGGREGATE SHOULDERS, TYPE B
- ⑤ EXISTING CONCRETE BARRIER
- ⑥ EXISTING STABILIZED SUB-BASE, 4"

MODEL: S:\MODEL\NAME\$  
 FILE NAME: I:\MIDWEST\subbase\by.com\PIV\DOT\Documents\DOT Offices\District 8\Projects\827699\CADDData\CAD\Sheet\827699-sh1-typical.dgn

USER NAME = jeffersonts	DESIGNED - _____	REVISED - _____
DRAWN - _____	REVISIONS - _____	REVISIONS - _____
PLOT SCALE = 100.0637' / in.	CHECKED - _____	REVISIONS - _____
PLOT DATE = 8/17/2021	DATE - _____	REVISIONS - _____

**STATE OF ILLINOIS  
DEPARTMENT OF TRANSPORTATION**

**TYPICAL SECTIONS**

SCALE: \_\_\_\_\_ SHEET \_\_\_\_\_ OF \_\_\_\_\_ SHEETS STA. \_\_\_\_\_ TO STA. \_\_\_\_\_

F.A.I. RTE.	SECTION	COUNTY	TOTAL SHEETS	SHEET NO.
255	67-(1,2,3)PP-1, 82-(6,7,8)PP-1	MONROE, ST. CLAIR	8	4
CONTRACT NO. 76P89				
ILLINOIS FED. AID PROJECT				

**PEAK HOURS LANE OPENINGS**

*ONE LANE OPEN **TWO LANES OPEN	12:00 AM	1:00 AM	2:00 AM	3:00 AM	4:00 AM	5:00 AM	6:00 AM	7:00 AM	8:00 AM	9:00 AM	10:00 AM	11:00 AM	12:00 PM	1:00 PM	2:00 PM	3:00 PM	4:00 PM	5:00 PM	6:00 PM	7:00 PM	8:00 PM	9:00 PM	10:00 PM	11:00 PM	12:00 AM	DAYS
<b>255-JB BRIDGE TO IL 3 (COLUMBIA)</b>																										
WB	*ONE LANE OPEN					**	ALL LANES OPEN										**	*ONE LANE OPEN					MON - FRI			
EB	*ONE LANE OPEN						ALL LANES OPEN											**	*ONE LANE OPEN					MON - FRI		
<b>255-IL 3(COLUMBIA) TO IL 3 (CAHOKIA)</b>																										
SB	*ONE LANE OPEN						**TWO LANES OPEN						ALL LANES OPEN					**	*ONE LANE OPEN					MON - FRI		
NB	*ONE LANE OPEN						ALL LANES OPEN										**	*ONE LANE OPEN					MON - FRI			
<b>255-IL 3 (CAHOKIA) TO IL 157</b>																										
SB	*ONE LANE OPEN						**TWO LANES OPEN						*ONE LANE OPEN					**	*ONE LANE OPEN					MON - FRI		
NB	*ONE LANE OPEN						**TWO LANES OPEN						*ONE LANE OPEN					**	*ONE LANE OPEN					MON - FRI		

MODEL \$HODELNAMES  
 FILE Name: p:\illinois\pww\rentelby.com\PM\BOD1\Documents\BOD1\_0\files\255-IL 3 (COLUMBIA) TO IL 3 (CAHOKIA) TO IL 157\67689-11-13-2021\peak\_hours\_lane\_openings.dwg

USER NAME = JEFFERSONTS	DESIGNED - _____	REVISED - _____
	DRAWN - _____	REVISED - _____
PLOT SCALE = 100.1576 ' / in.	CHECKED - _____	REVISED - _____
PLOT DATE = 8/25/2021	DATE - _____	REVISED - _____

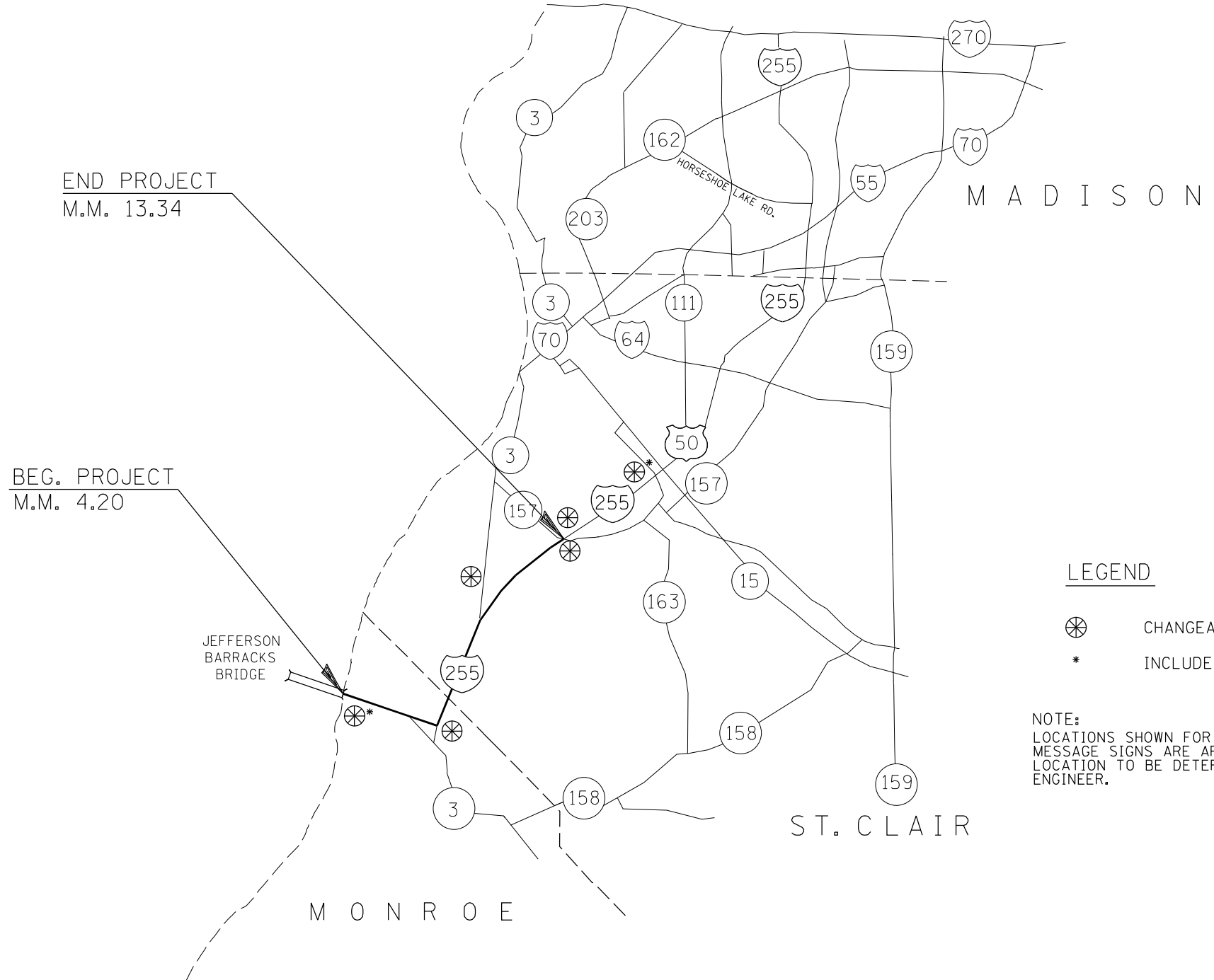
**STATE OF ILLINOIS  
DEPARTMENT OF TRANSPORTATION**

**PEAK HOUR SCHEDULE**



SCALE: \_\_\_\_\_ SHEET \_\_\_ OF \_\_\_ SHEETS STA. \_\_\_\_\_ TO STA. \_\_\_\_\_

F.A.I RTE.	SECTION	COUNTY	TOTAL SHEETS	SHEET NO.
255	67-(1,2,3)PP-1, 82-(6,7,8)PP-1	MONROE, ST. CLAIR	7	5
			CONTRACT NO. 76P89	

ILLINOIS | FED. AID PROJECT



**LEGEND**

-  CHANGEABLE MESSAGE SIGNS
-  INCLUDED IN STANDARD 701400

**NOTE:**  
 LOCATIONS SHOWN FOR THE CHANGEABLE MESSAGE SIGNS ARE APPROXIMATE. THE EXACT LOCATION TO BE DETERMINED BY THE RESIDENT ENGINEER.

MODEL: s:\MODEL\MAME  
 FILE NAME: p:\illinois\hertley.com\PI\DOT\Documents\DOT\_offices\District\_8\Projects\8276P89\CADD\data\CAD\pieces\8276P89\sheet\typical.dgn

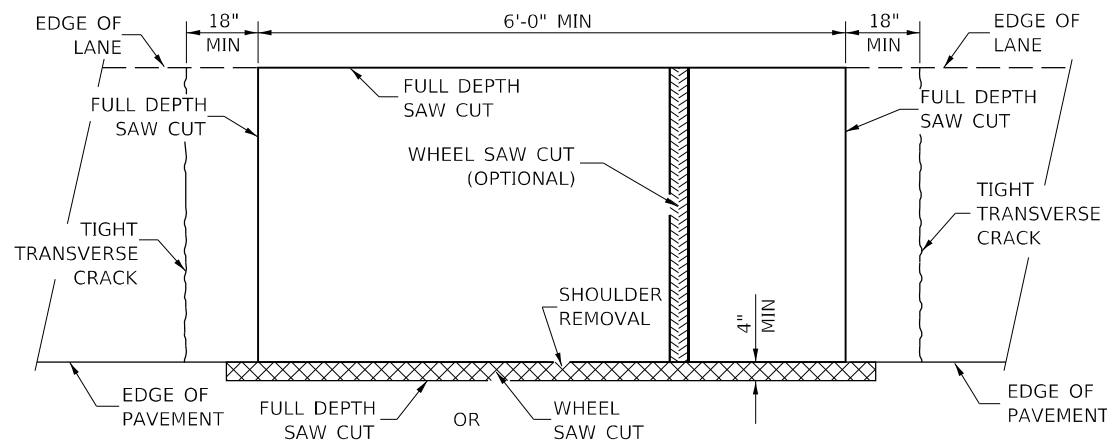
USER NAME = jeffersonts	DESIGNED - _____	REVISED - _____
	DRAWN - _____	REVISED - _____
PLOT SCALE = 99,9836 * / in.	CHECKED - _____	REVISED - _____
PLOT DATE = 8/17/2021	DATE - _____	REVISED - _____

**STATE OF ILLINOIS  
 DEPARTMENT OF TRANSPORTATION**

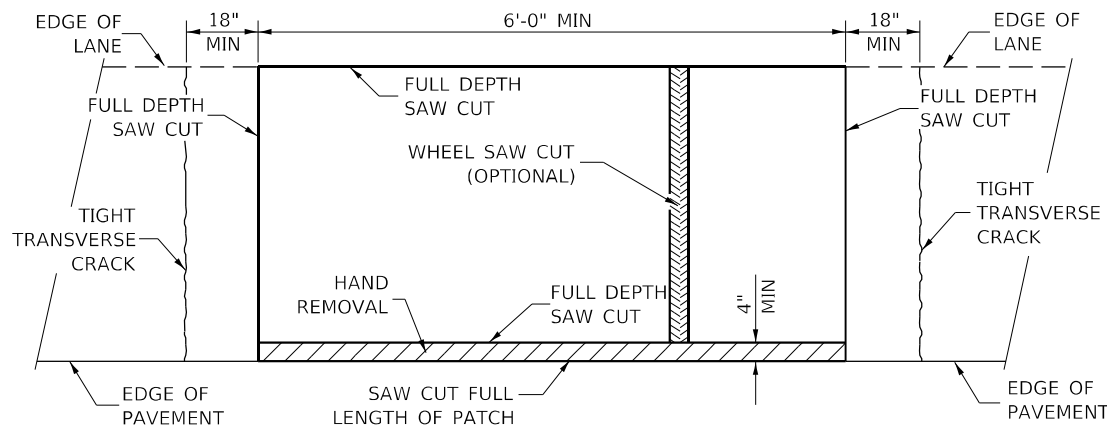
**CHANGEABLE MESSAGE SIGN DETAIL**

SCALE: \_\_\_\_\_ SHEET \_\_\_ OF \_\_\_ SHEETS STA. \_\_\_\_\_ TO STA. \_\_\_\_\_

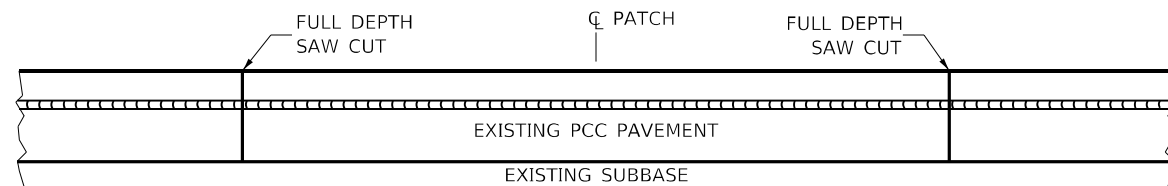
F.A.I. RTE.	SECTION	COUNTY	TOTAL SHEETS	SHEET NO.
255	67-(1,2,3)PP-1, 82-(6,7,8)PP-1	MONROE, ST. CLAIR	8	6
CONTRACT NO. 76P89				
ILLINOIS FED. AID PROJECT				



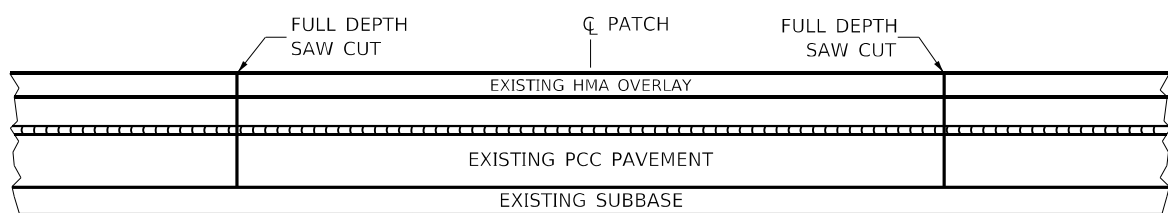
**PAVEMENT SAWING DETAIL  
(HMA SHOULDER)**



**PAVEMENT SAWING DETAIL  
(PCC SHOULDER)**



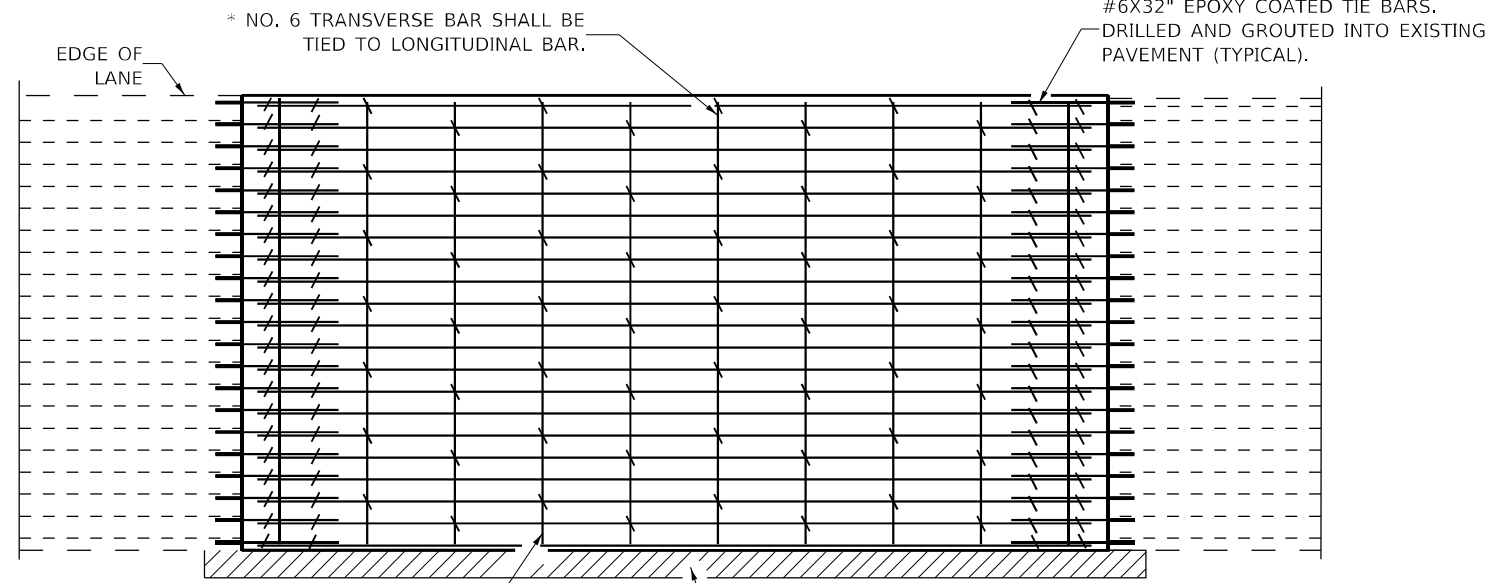
**EXISTING PAVEMENT WITHOUT HMA SURFACE**



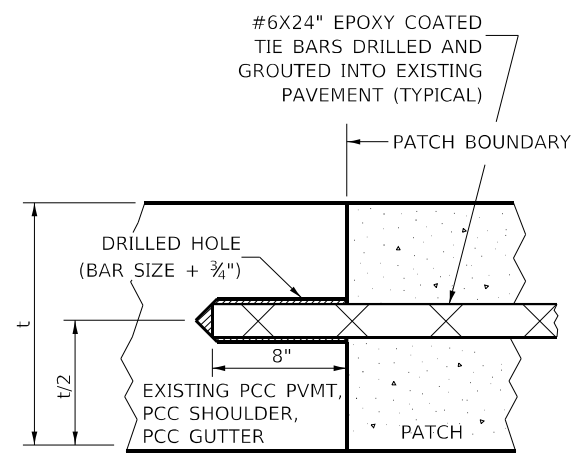
**EXISTING PAVEMENT WITH HMA SURFACE**

**PAVEMENT SAWING DETAIL FOR CLASS A PATCHING  
(CRC PAVEMENT)**

TRANSVERSE REBAR SHALL EXTEND TO OUTER LONGITUDINAL REBAR WHILE PROVIDING A MINIMUM 3" CLEARANCE FROM EXISTING PAVEMENT EDGE



**PAVEMENT REINFORCEMENT DETAIL**



**LONGITUDINAL CONSTRUCTION JOINT**

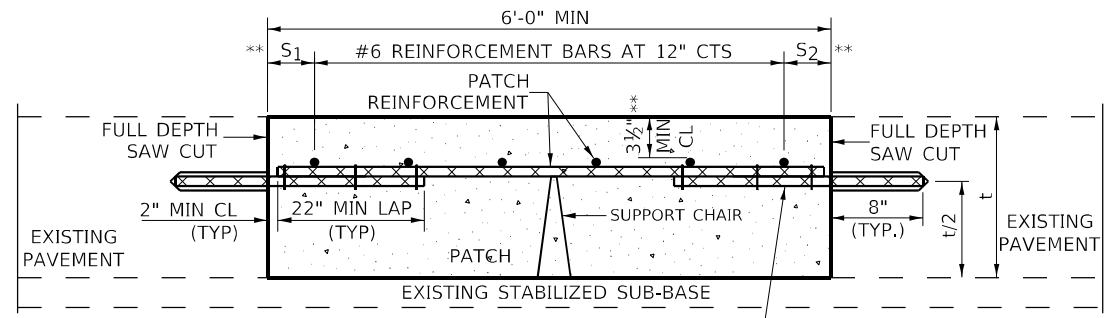
PATCHES MORE THAN 20' IN LENGTH SHALL BE TIED TO ADJACENT PAVEMENT, PCC SHOULDERS OR PCC CURB AND GUTTER WITH #6x24" EPOXY COATED TIE BARS AT 36" CENTERS.

**NOTES:**

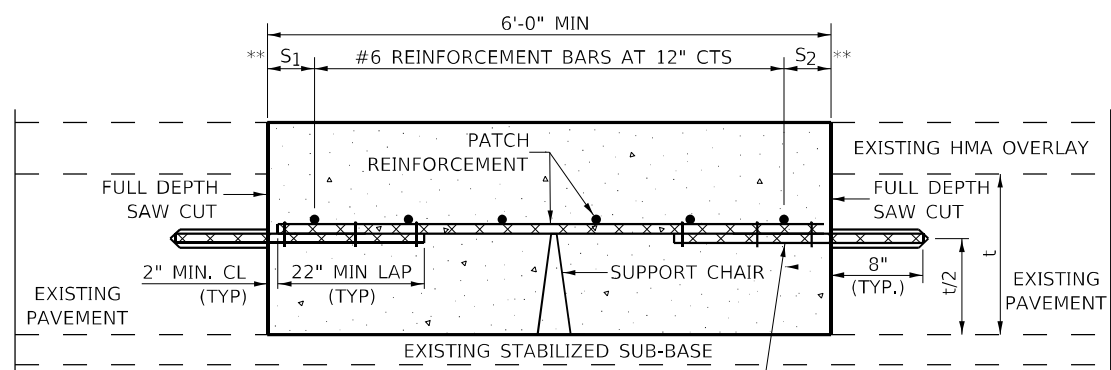
- EXISTING LONGITUDINAL REINFORCEMENT SPACING;  $\pm 6\frac{1}{2}$ ".
- SPACING OF NEW LONGITUDINAL REINFORCEMENT AND NEW LONGITUDINAL TIE BARS SHALL MATCH SPACING OF EXISTING REINFORCEMENT AND SHALL BE TIED TOGETHER WITH A MINIMUM OF TWO TIES PER BAR.
- SUPPORT CHAIRS SHALL BE REQUIRED WHENEVER PATCH LENGTH EXCEEDS 6'-0"

\* EVERY THIRD INTERSECTION MUST BE TIED. WHEN THE MINIMUM CLEARANCE CANNOT BE OBTAINED WITH THE TRANSVERSE REBAR ON TOP, THEN THE TRANSVERSE REBAR SHALL BE TIED TO THE BOTTOM OF THE LONGITUDINAL REBAR.

\*\* VARIABLES WHERE  $S_1$  AND  $S_2$  ARE  $2\frac{1}{2}$ " MIN. AND 12" MAX.



**WITHOUT HMA OVERLAY**



**WITH HMA OVERLAY**

**PATCHING DETAIL FOR CLASS A PATCHING  
(CRC PAVEMENT)**

MODEL \$M02ELMME5  
FILE NAME: pavementsawing.dwg  
PROJECT: D:\Projects\DOT\Office\Drawings\IP\Projects\DOT\76P89\Special.dwg

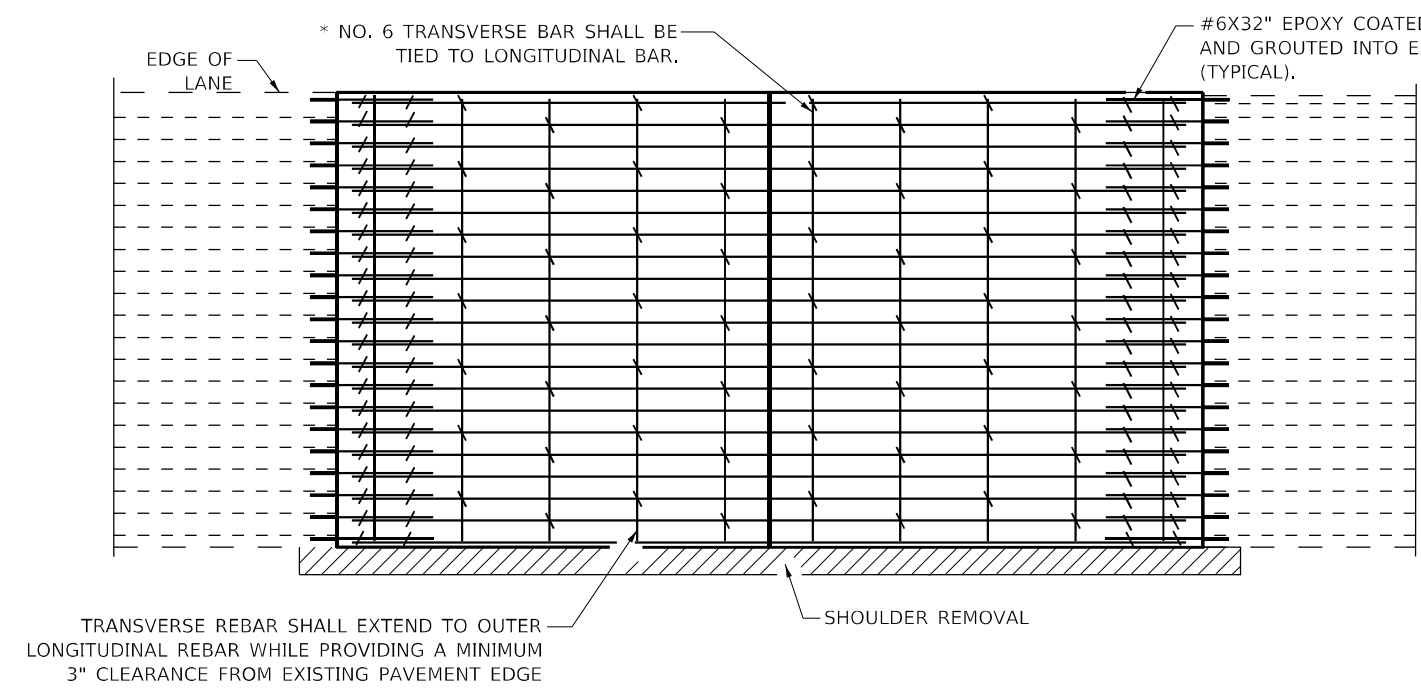
USER NAME = jeffersonts	DESIGNED - _____	REVISED - _____
DRAWN - _____	REVISIONS - _____	REVISED - _____
PLOT SCALE = 100.0427' / in.	CHECKED - _____	REVISED - _____
PLOT DATE = 8/18/2021	DATE - _____	REVISED - _____

**STATE OF ILLINOIS  
DEPARTMENT OF TRANSPORTATION**

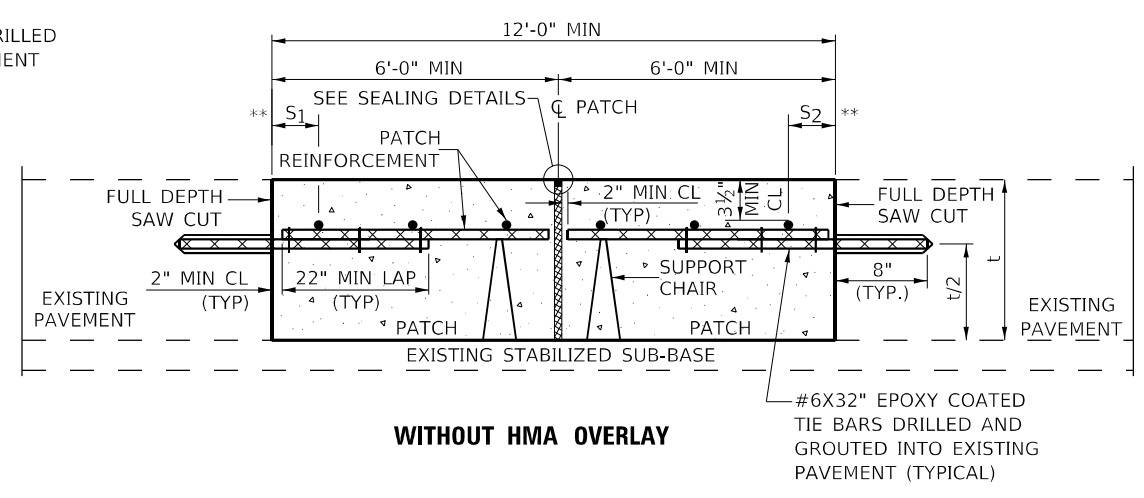
**CLASS A PATCHING (SPECIAL)**

SCALE: \_\_\_\_\_ SHEET \_\_\_\_\_ OF \_\_\_\_\_ SHEETS STA. \_\_\_\_\_ TO STA. \_\_\_\_\_

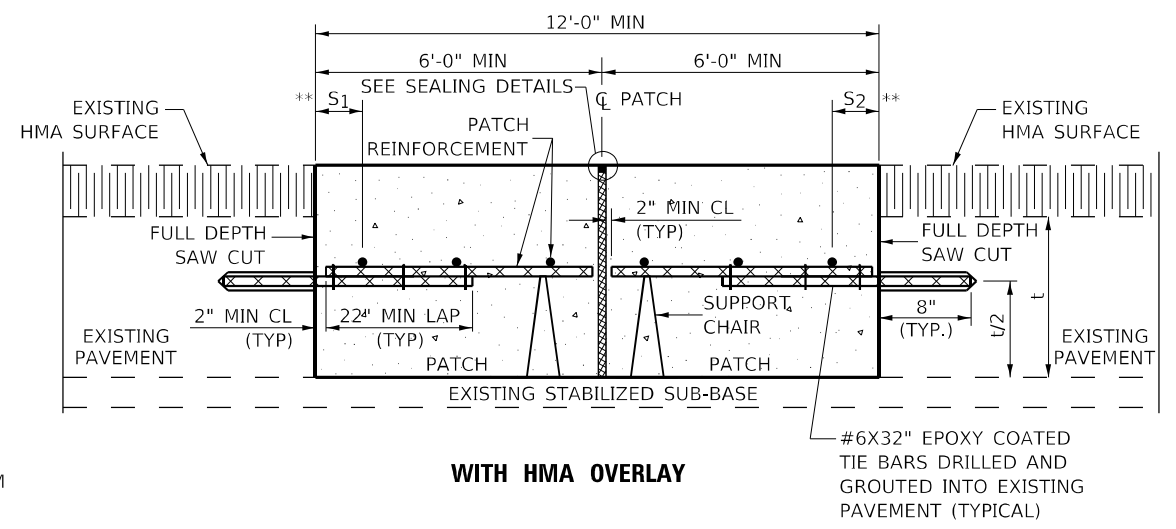
F.A.I. RTE.	SECTION	COUNTY	TOTAL SHEETS	SHEET NO.
255	67-(1,2,3)PP-1, 82-(6,7,8)PP-1	MONROE, ST. CLAIR	8	7
CONTRACT NO. 76P89				
ILLINOIS FED. AID PROJECT				



**PAVEMENT REINFORCEMENT DETAIL**

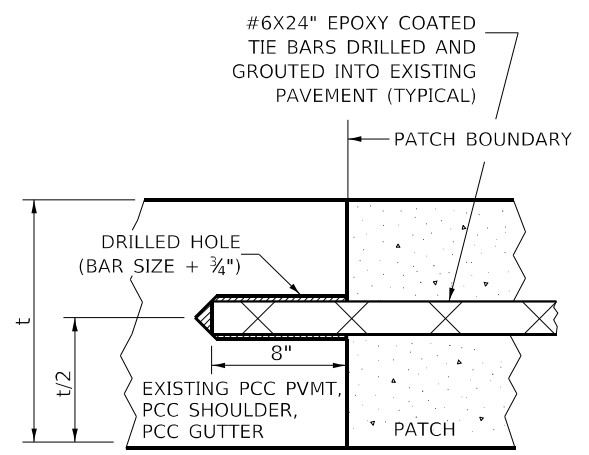


**WITHOUT HMA OVERLAY**



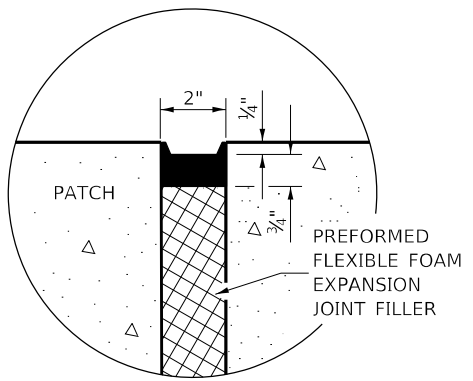
**WITH HMA OVERLAY**

**CLASS A PATCH WITH EXPANSION JOINT**

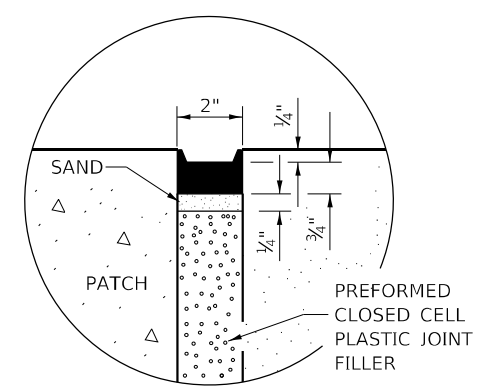


**LONGITUDINAL CONSTRUCTION JOINT**

PATCHES MORE THAN 20' IN LENGTH SHALL BE TIED TO ADJACENT PAVEMENT, PCC SHOULDERS OR PCC CURB AND GUTTER WITH #6x24" EPOXY COATED TIE BARS AT 36" CENTERS.



**SEALING DETAIL**



**SEALING DETAIL**

- NOTES:**
- EXISTING LONGITUDINAL REINFORCEMENT SPACING;  $\pm 6\frac{1}{2}$ ".
  - SPACING OF NEW LONGITUDINAL REINFORCEMENT AND NEW LONGITUDINAL TIE BARS SHALL MATCH SPACING OF EXISTING REINFORCEMENT AND SHALL BE TIED TOGETHER WITH A MINIMUM OF TWO TIES PER BAR.
  - SUPPORT CHAIRS SHALL BE REQUIRED WHENEVER PATCH LENGTH EXCEEDS 6'-0"
  - \* EVERY THIRD INTERSECTION MUST BE TIED. WHEN THE MINIMUM CLEARANCE CANNOT BE OBTAINED WITH THE TRANSVERSE REBAR ON TOP, THEN THE TRANSVERSE REBAR SHALL BE TIED TO THE BOTTOM OF THE LONGITUDINAL REBAR.
  - \*\* VARIABLES WHERE S AND S ARE 2½" MIN. AND 12" MAX.

MODEL: \\MODEL\NAMES FILE NAME: p:\pub\c:\p\benley.com\p\p\DOT\Documents\DOT Office\Dir\trct\_8\Project\DOT\67689\CA\Doc\sheet\DOT67689-shft-typical.dgn

USER NAME = jeffersonits	DESIGNED - _____	REVISED - _____
PLOT SCALE = 100.0458' / in.	DRAWN - _____	REVISED - _____
PLOT DATE = 8/17/2021	CHECKED - _____	REVISED - _____
	DATE - _____	REVISED - _____

**STATE OF ILLINOIS  
DEPARTMENT OF TRANSPORTATION**

<b>CLASS A PATCHING (SPECIAL)</b>	
SCALE: _____	SHEET _____ OF _____ SHEETS
STA. _____	TO STA. _____

F.A.I R.T.E.	SECTION	COUNTY	TOTAL SHEETS	SHEET NO.
255	67-(1,2,3)PP-1, 82-(6,7,8)PP-1	MONROE, ST. CLAIR	8	8
CONTRACT NO. 76P89			ILLINOIS FED. AID PROJECT	