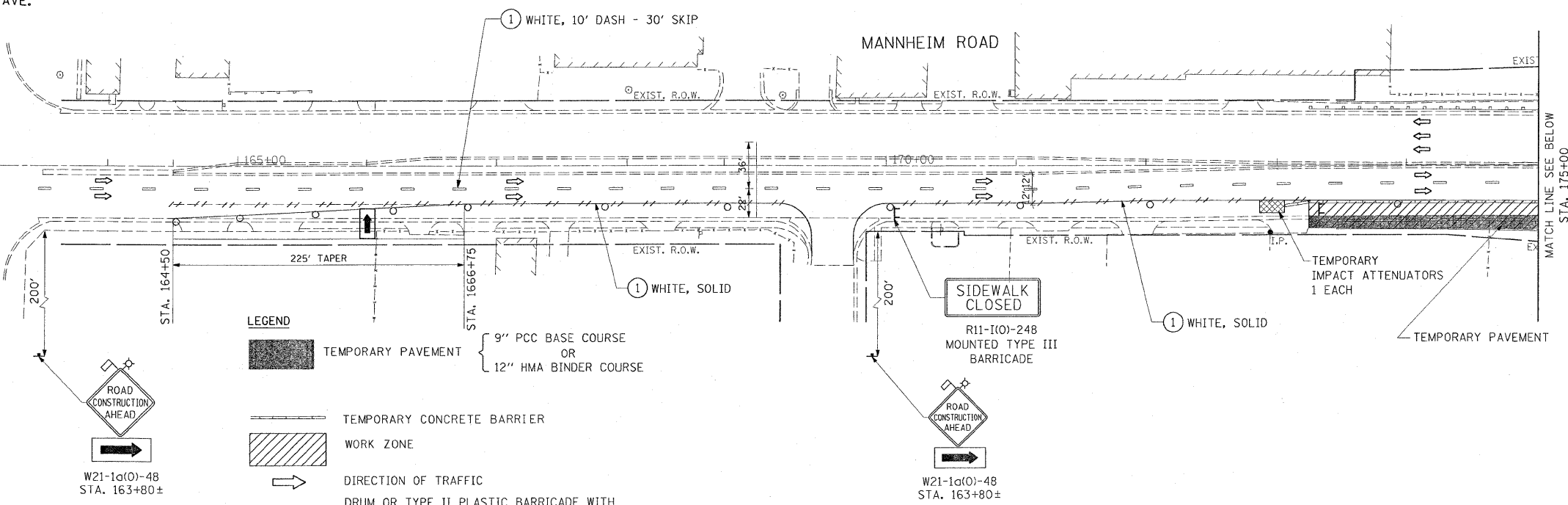
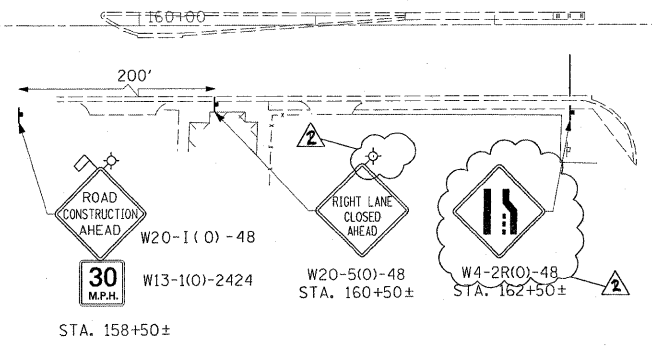
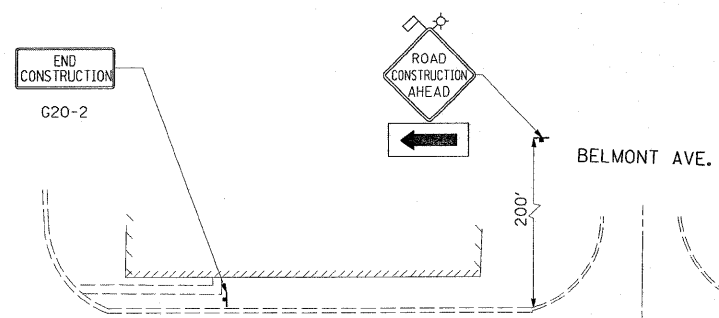
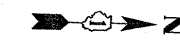
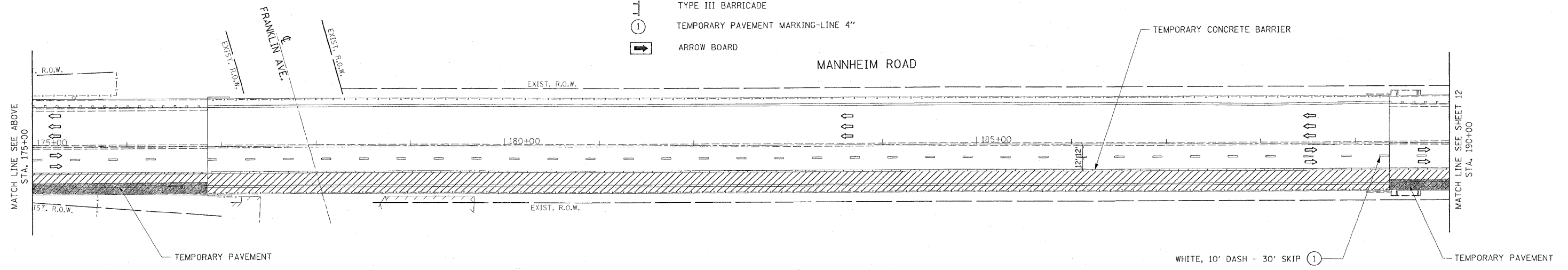


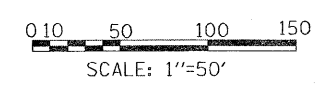
F.A.P. RTE.	SECTION	COUNTY	TOTAL SHEETS	SHEET NO.
330	465 VB-R-1	COOK	103	11
STA.		TO STA.		
FED. ROAD DIST. NO. 1 ILLINOIS FED. AID PROJECT				
CONTRACT NO. 60407				



- LEGEND**
- TEMPORARY PAVEMENT
 - 9" PCC BASE COURSE OR
 - 12" HMA BINDER COURSE
 - TEMPORARY CONCRETE BARRIER
 - WORK ZONE
 - DIRECTION OF TRAFFIC
 - DRUM OR TYPE II PLASTIC BARRICADE WITH STEADY BURNING LIGHT, 50' C-C ON CURVE/TAPER 100' C-C ON TANGENT
 - TRAFFIC SIGN
 - PAVEMENT MARKING REMOVAL
 - TYPE III BARRICADE
 - TEMPORARY PAVEMENT MARKING-LINE 4"
 - ARROW BOARD



L:\WORK\53346\cadd\drawings\Roadway\11MOT1st.dgn 10/21/2009



EARTH TECH | AECOM

REVISIONS	
NAME	DATE
ADDENDUM 2	10-19-09

ILLINOIS DEPARTMENT OF TRANSPORTATION
 FAP 330 US 12/45 (MANNHEIM RD.) OVER
 500 LINE RR & FRANKLIN AVE.
**MAINTENANCE OF TRAFFIC
 STAGE I**
 SCALE: 1" = 50'
 DATE: JULY 8, 2009
 DRAWN BY: CJO
 CHECKED BY: PWK

MOT-4