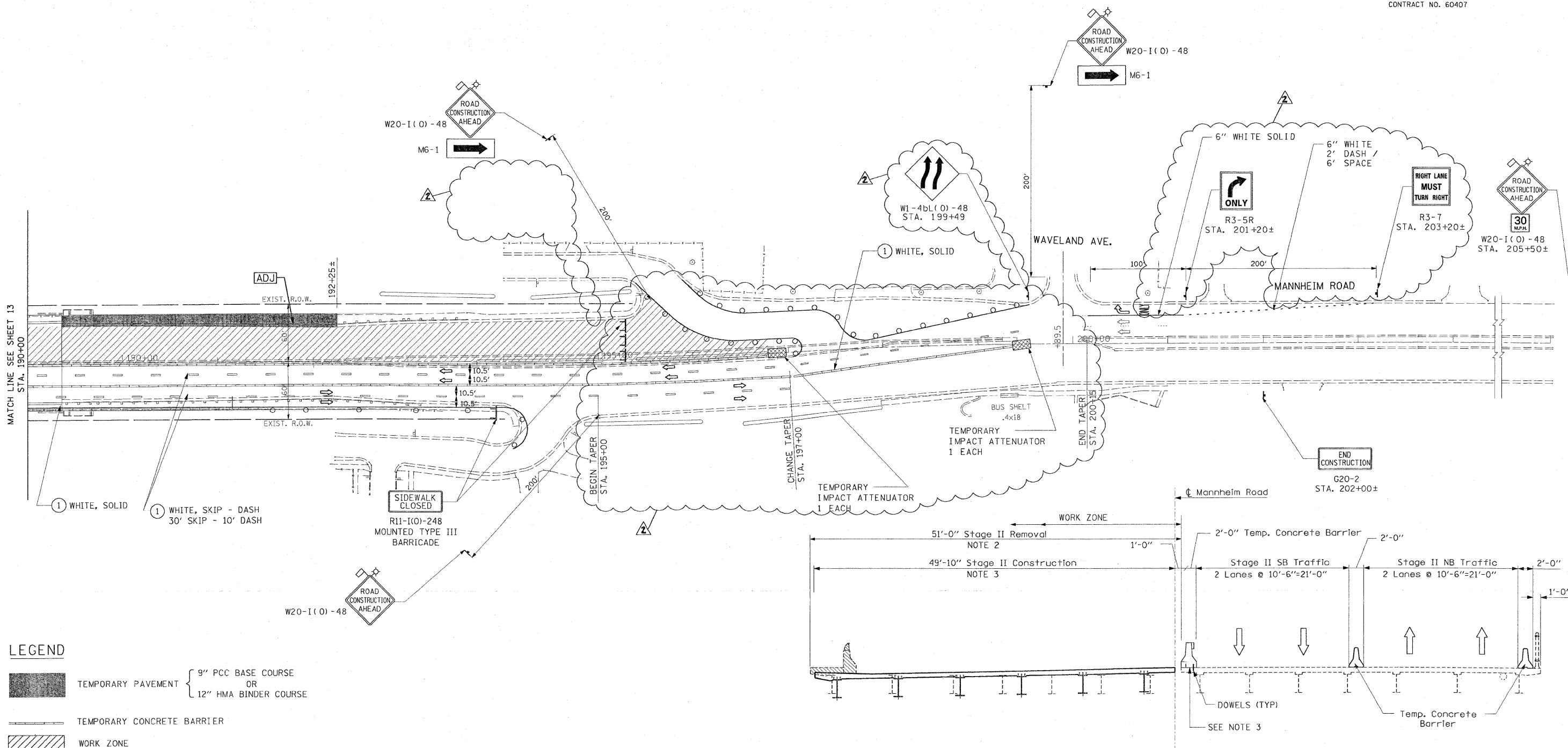
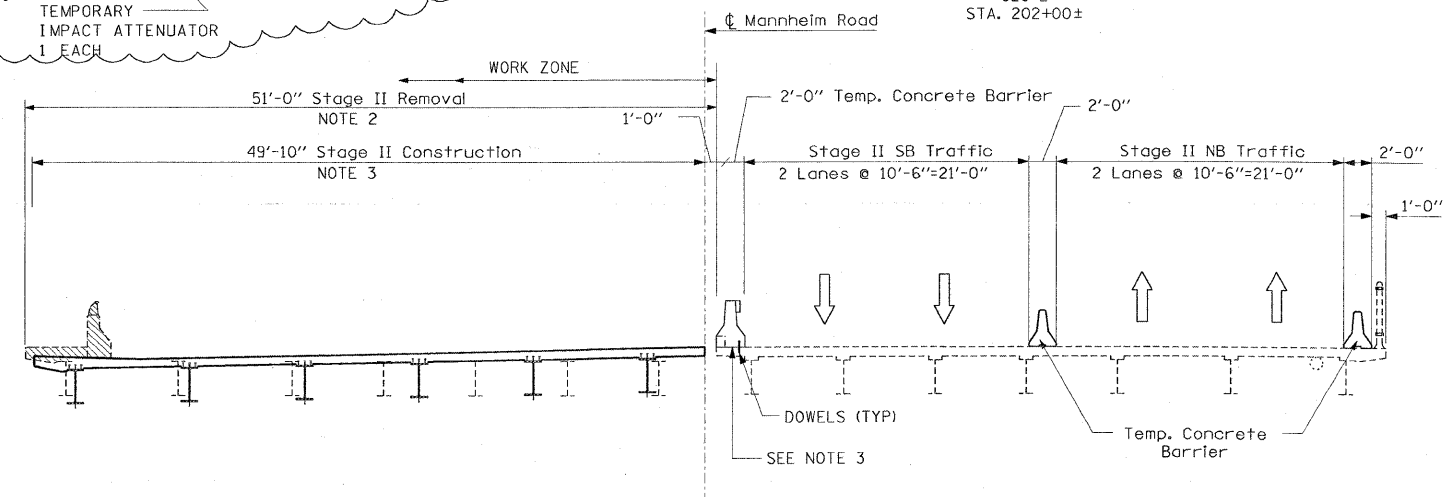


F.A.P. RTE.	SECTION	COUNTY	TOTAL SHEETS	SHEET NO.
330	465 VB-R-1	COOK	103	14
STA.		TO STA.		
FED. ROAD DIST. NO. 1		ILLINOIS FED. AID PROJECT		
CONTRACT NO. 60407				

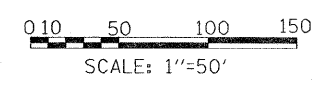


- LEGEND**
- TEMPORARY PAVEMENT { 9" PCC BASE COURSE OR 12" HMA BINDER COURSE
 - TEMPORARY CONCRETE BARRIER
 - WORK ZONE
 - DIRECTION OF TRAFFIC
 - DRUM OR TYPE II PLASTIC BARRICADE WITH STEADY BURNING LIGHT, 50' C-C ON CURVE/TAPER 100' C-C ON TANGENT
 - TRAFFIC SIGN
 - PAVEMENT MARKING REMOVAL
 - TYPE III BARRICADE
 - TEMPORARY PAVEMENT MARKING-LINE 4"
 - CATCH BASINS TO BE ADJUSTED

NOTE
 1. SEE BRIDGE DWG. NO. S3, S4, S5 AND S46 FOR DETAILS.



STAGE II
 (Looking Upstation)



EARTH TECH | AECOM

REVISIONS	
NAME	DATE
ADDENDUM 2	10-19-09

ILLINOIS DEPARTMENT OF TRANSPORTATION
 FAP 330 US 12/45 (MANNHEIM RD.) OVER
 500 LINE RR & FRANKLIN AVE.
**MAINTENANCE OF TRAFFIC
 STAGE II**
 SCALE: 1"= 50'
 DATE: JULY 8, 2009
 DRAWN BY: CJO
 CHECKED BY: PWK

MOT-7

L:\WORK\53346\cadd\drawings\Roadway\14\MT\stg2.dgn 10/21/2009