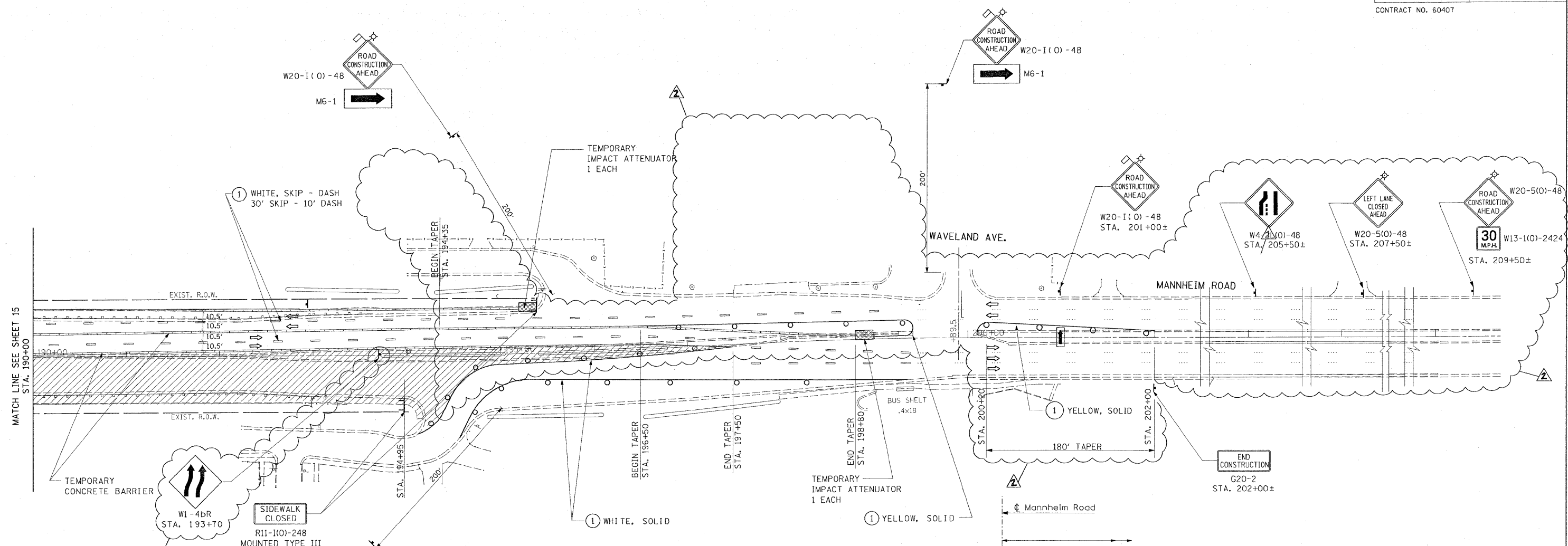


F.A.P. RTE.	SECTION	COUNTY	TOTAL SHEETS	SHEET NO.
330	465 VB-R-1	COOK	103	16
STA.		TO STA.		
FED. ROAD DIST. NO. 1 ILLINOIS FED. AID PROJECT				
CONTRACT NO. 60407				

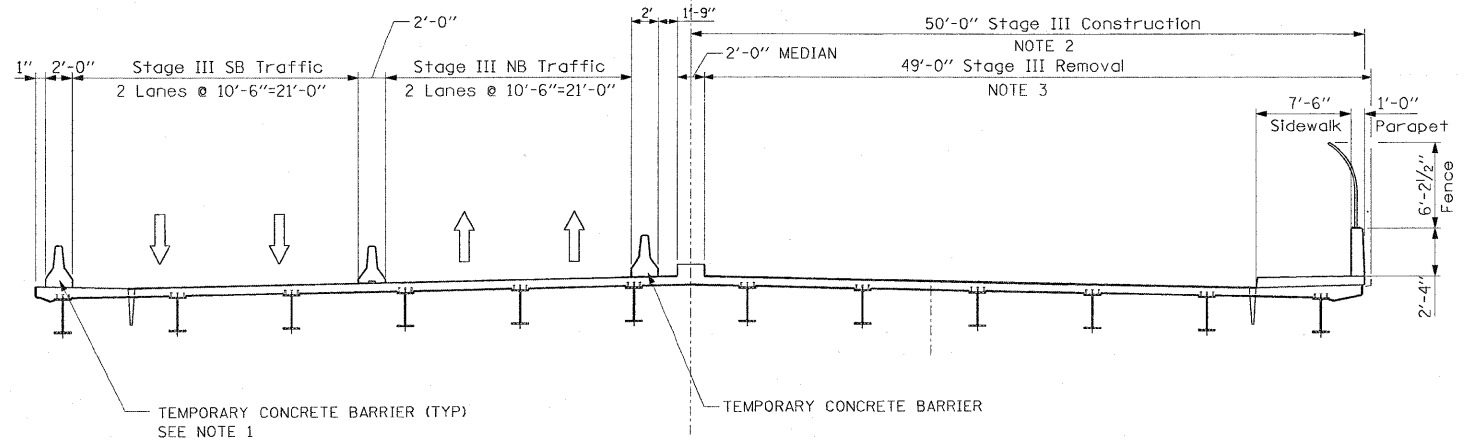


LEGEND

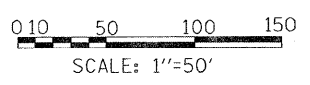
- TEMPORARY PAVEMENT { 9" PCC BASE COURSE OR 12" HMA BINDER COURSE
- TEMPORARY CONCRETE BARRIER
- WORK ZONE
- DIRECTION OF TRAFFIC
- DRUM OR TYPE II PLASTIC BARRICADE WITH STEADY BURNING LIGHT, 50' C-C ON CURVE/TAPER 100' C-C ON TANGENT
- TRAFFIC SIGN
- PAVEMENT MARKING REMOVAL
- TYPE III BARRICADE
- TEMPORARY PAVEMENT MARKING-LINE 4"
- CATCH BASINS TO BE ADJUSTED
- ARROW BOARD

NOTE

1. SEE BRIDGE DWG. NO. S3, S4, 55 AND S46 FOR DETAILS.



STAGE III
(Looking Upstation)



EARTH TECH | AECOM

REVISIONS	
NAME	DATE
ADDENDUM 2	10-19-09

ILLINOIS DEPARTMENT OF TRANSPORTATION
FAP 330 US 12/45 (MANNHEIM RD.) OVER
500 LINE RR & FRANKLIN AVE.
**MAINTENANCE OF TRAFFIC
STAGE III**
SCALE: 1"= 50'
DATE: JULY 8, 2009
DRAWN BY: CJO
CHECKED BY: PWK

MOT-9

L:\WORK\53346\cadd\drawings\Roadway\IBMDT\stg3.dgn 10/21/2009