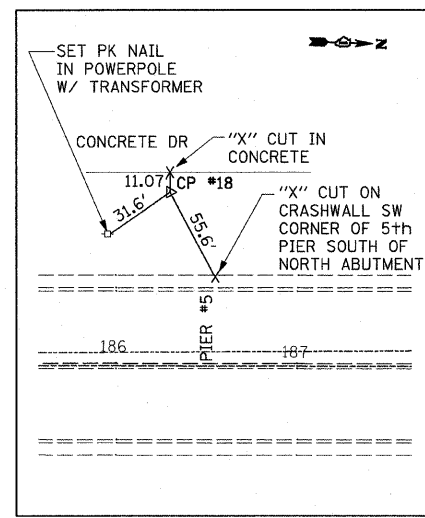
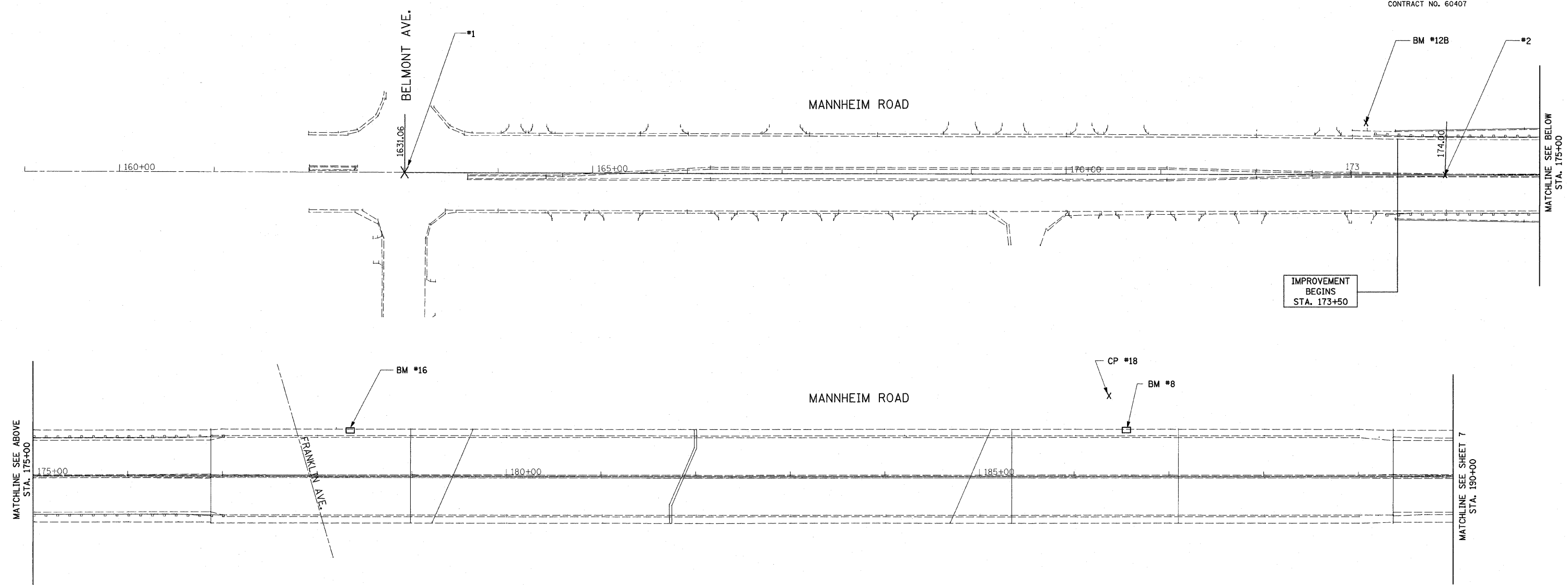
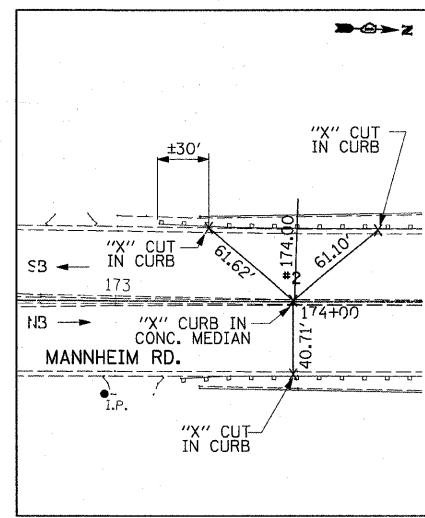


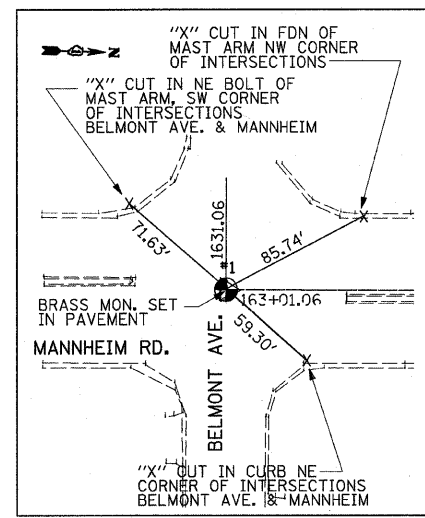
F.A.P. RTE.	SECTION	COUNTY	TOTAL SHEETS	SHEET NO.
330	465 VB-R-1	COOK	103	6
STA.	TO STA.			
FED. ROAD DIST. NO. 1 ILLINOIS FED. AID PROJECT				
CONTRACT NO. 60407				



**CP #18**  
 N=1922050.5407  
 E=1106022.7969  
 ELEV.=648.66  
 SEE NOTE



**#2**  
 STA. 174+00.00  
 N=1920832.339  
 E=1106147.158  
 SEE NOTE

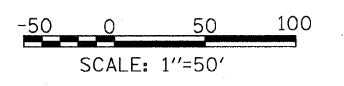


**#1**  
 STA. 163+01.06  
 N=1919734.058  
 E=1106178.117  
 SEE NOTE

**BENCHMARK**

- BM#8:** "□" CUT ON CRASHWALL SW CORNER OF 5th PIER SOUTH OF NORTH ABUTMENT ELEV. 648.97
- BM#12B:** "X" CUT ON NW BOLT (TOP ROW) FH WEST SIDE MANNHEIM RD. FIRST FH SOUTH OF BRIDGE OVER RR TRACKS & FRANKLIN AVE. ELEV. 650.81
- BM#16:** "□" CUT IN SW CORNER OF CRASHWALL, 2nd PIER NORTH OF SOUTH ABUTMENT OF BRIDGE OVER RR ELEV. 649.76
- BM#16B:** "X" CUT ON SE BOLT ON FH EAST SIDE OF MANNHEIM RD., SOUTH OF WAVELAND AVE. ELEV. 644.15

**NOTE:**  
 NORTHINGS & EASTINGS AS SHOWN ON PLAN ARE PROJECT SPECIFIC AND SHALL BE USED FOR THIS PROJECT ONLY



REVISIONS	
NAME	DATE

ILLINOIS DEPARTMENT OF TRANSPORTATION  
 FAP 330 US 12/45 (MANNHEIM RD.) OVER  
 500 LINE RR & FRANKLIN AVE.  
 ALIGNMENT, TIES AND BENCHMARKS  
 SCALE: 1"=50'  
 DATE: JULY 8, 2009  
 DRAWN BY: MD  
 CHECKED BY: PWK

**EARTH TECH | AECOM**

L:\WORK\53346\cadd\drawings\Roadway\06a1.dgn 7/8/2009